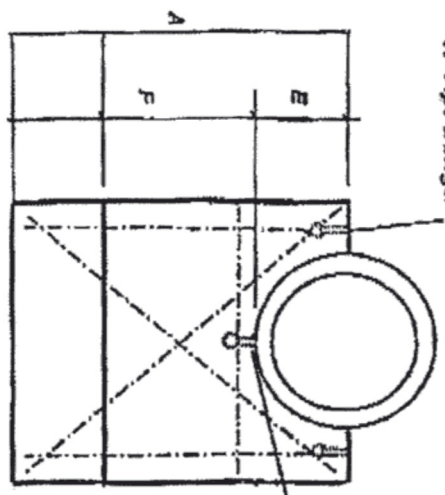


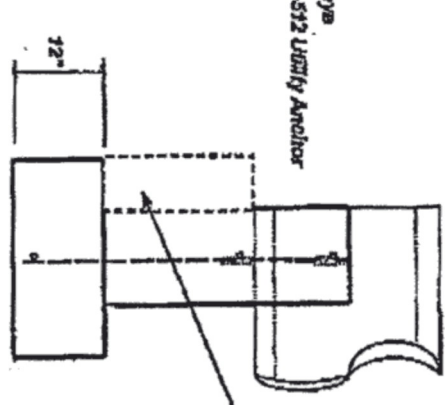
PLAN
UEL-512 Utility Anchor
12" to 27" pipe

PIPE SIZE	A	B	C	D	E	F	WEIGHT	#5 Bars
12" RCP	3'-2"	2'-6"	1'-6"	0'-8"	0'-10"	2'-4"	1,430 LBS	5
15" RCP	3'-2"	2'-6"	1'-10"	0'-3"	1'-0"	2'-2"	1,635 LBS	5
18" RCP	3'-3"	3'-0"	2'-0"	0'-5"	1'-1"	2'-2"	1,636 LBS	5
21" RCP	3'-4"	3'-6"	2'-2 1/2"	0'-8 3/4"	1'-2 1/4"	2'-1 3/4"	1,852 LBS	5
24" RCP	3'-6"	4'-0"	2'-6"	0'-8"	1'-6"	2'-2"	2,281 LBS	5
27" RCP	3'-8"	4'-6"	2'-9 1/2"	0'-8 1/4"	1'-5 1/4"	2'-2 1/4"	2,637 LBS	6
30" RCP	3'-8"	5'-0"	3'-2"	0'-10"	1'-8"	2'-1"	2,941 LBS	7
36" RCP	4'-0"	6'-0"	3'-10"	1'-0"	2'-0"	2'-0"	3,637 LBS	7
42" RCP	4'-3"	7'-0"	4'-6"	1'-2"	2'-4"	1'-11"	4,363 LBS	10
48" RCP	4'-6"	8'-0"	4'-10"	1'-6"	2'-8"	2'-0"	5,736 LBS	10

DIMENSIONS



ELEVATION



SIDE

Inlet Channel Protection Only
6" Extension Required When
RipRap Is Specified
Field Poured By Contractor As Required

Note:
The following information will be stenciled with ink
on each structure:

- Customer Name
- Job Name
- Structure Number
- Product Code
- Date Of Production
- SDCI Company Logo
- Plant Identifier -SDC1-2
- NPCA Logo

STRUCTURAL ENGINEERING
Tim Keller
Administrator

ACCEPTED	PS 7/20/07
ACCEPTED AS NOTED	
NOT ACCEPTED	

For general conformance with design plans and contract
terms only. Does not release contractor from responsibility
for errors or omissions.

AVAILABLE MARKETS: OH

- GENERAL NOTES:
1. Concrete 4000 PSI @ 28 Days, Air Entrained 6%+- .2%
 2. Reinforcing Epoxy Steel #5 BARS (see chart above for number required)
 3. 2" Minimum Concrete Coverage
 4. Lift Eye: UEL 512 : 1 required for 12" to 27" pipes, centered in cradle
 5. Lift Eye: UEL 512 : 2 required for 30" & larger pipes; 1 on each side of cradle opening
 5. Fill lift eye cups with ODOT Approved Non-Shrink Grout in field by others