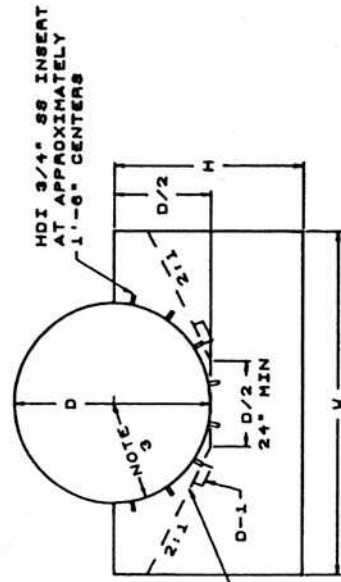
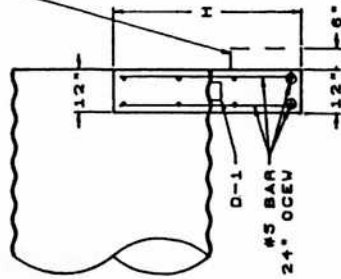
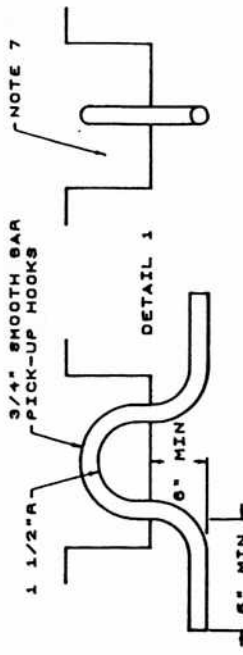


INLET CHANNEL PROTECTION ONLY
6" EXTENSION REQUIRED
WHEN AIRPRAP IS SPECIFIED



CIRCULAR



NOTE 7

HEADWALL FOR PLASTIC AND METAL PIPE				
CIRCULAR				
D	V	H	CONC CU YD	WEIGHT
12"	2'-0"	3'-0"	.21	851
15"	2'-6"	3'-2"	.27	1094
18"	3'-0"	3'-3"	.33	1337
21"	3'-6"	3'-4"	.39	1580
24"	4'-0"	3'-6"	.46	1823
27"	4'-6"	3'-8"	.53	2147
30"	5'-0"	3'-9"	.60	2438
33"	5'-6"	3'-10"	.68	2754
36"	6'-0"	4'-0"	.76	3076
39"	6'-6"	4'-2"	.84	3422
42"	7'-0"	4'-3"	.92	3726
48"	8'-0"	4'-6"	1.10	4455
54"	9'-3"	4'-9"	1.33	5307
60"	10'-6"	5'-6"	1.76	7289
66"	11'-9"	5'-9"	2.06	8343
72"	13'-0"	6'-0"	2.37	9598

STRUCTURAL ENGINEERING

Brad Tagell Administrator
 APPROVED
 APPROVED AS NOTED
 NOT APPROVED

for general conformance with design plans and specifications only. Does not relieve contractor from responsibility for errors or omissions.

NCI Norwalk Concrete Industries
 Norwalk, Ohio
 191 WOODLAWN AVE. PHONE (419) 668-8167

PRECAST CONCRETE
 HEADWALL
 ODOT HW - 4A
 METAL & PLASTIC PIPE

Rev. 01-09-98

REVISIONS:	Date	Drawing No.
	11-10-97	C-2125-97