

STRAPPING AND ANCHOR'S
SUPPLIED AND INSTALLED BY
CONTRACTOR.

STRUCTURAL ENGINEERING

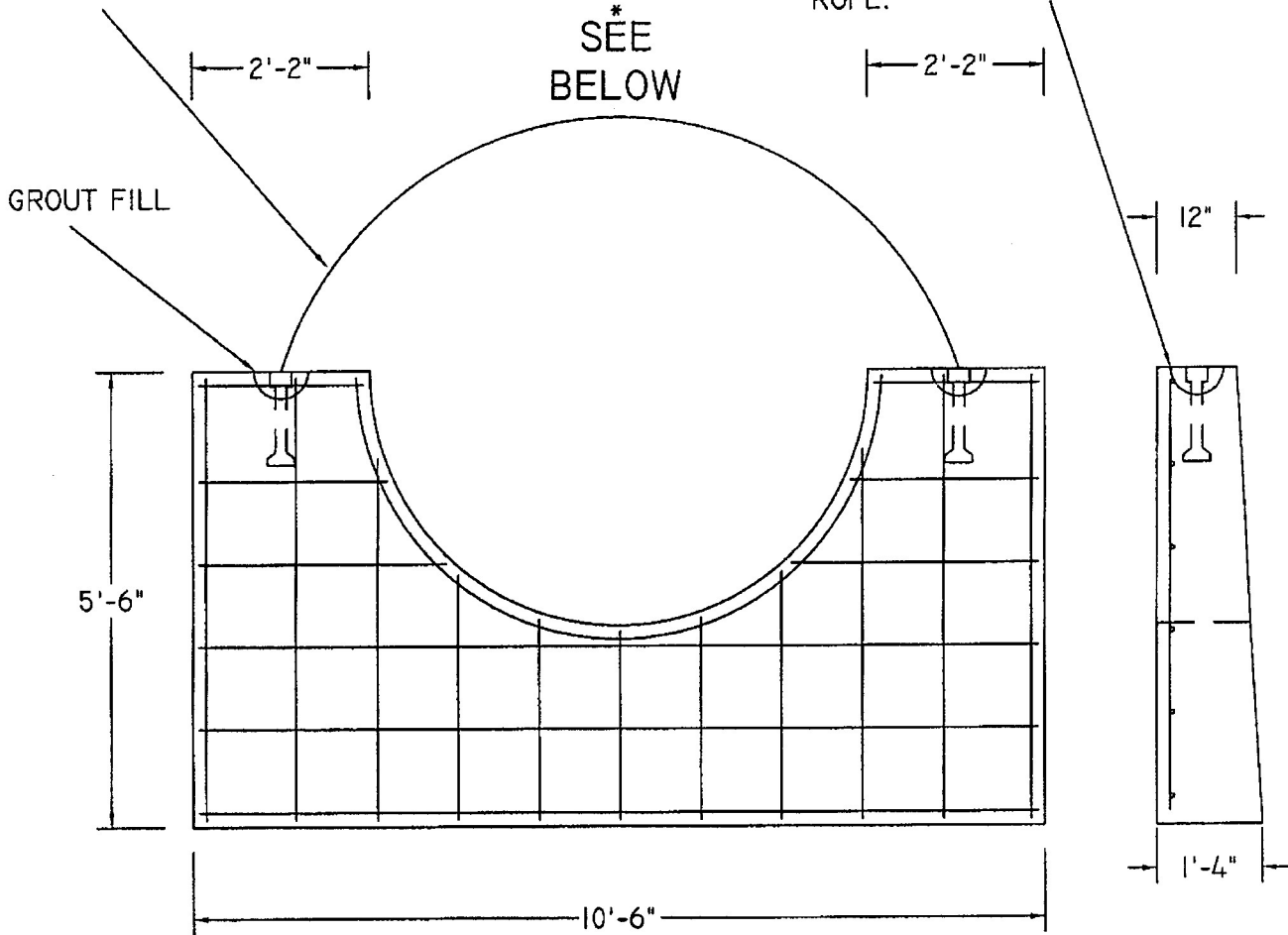
STAINLESS STEEL WIRE ROPE
SUPPLIED AND INSTALLED BY
CONTRACTOR FOR METAL,
AND PLASTIC PIPE. THE
INSERTS FOR THE PL50
LIFTING PINS ARE TO BE
USED FOR SECURING STEEL
ROPE.

Administrator

APPROVED	<i>BMG</i>
APPROVED AS NOTED	
NOT APPROVED	

for general conformance with design plans and specifications only. Does not relieve contractor from responsibility for errors or omissions

STAINLESS
STEEL ROPE



EPOXY COATED 5/8" #5 REBAR 12" C/C EACHWAY
EXTRA STEEL AROUND HOLE OR
A615 OR EQUAL REINFORCEMENT

LIFTING HOLES AND ANCHORS TO BE FILLED WITH NON SHRINK GROUT BY CONTRACTOR

*SIZE OF OPENING IS 4" +/- OD OF PIPE.

HW-4B FOR 60"

HANSON PIPE & PRECAST

PRINT BY:

PRINT #

SIDNEY, OHIO

WT 7,800 LBS

PHONE 937 492-9119 FAX 937 492-8434