

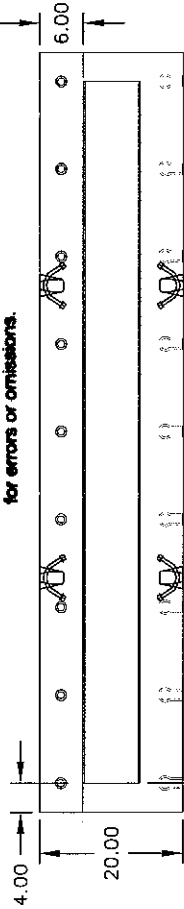
# STRUCTURAL ENGINEERING

*Tim Keller*

Administrator

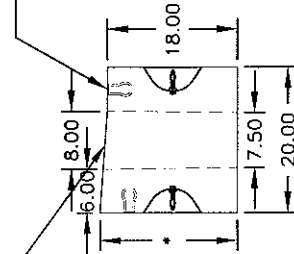
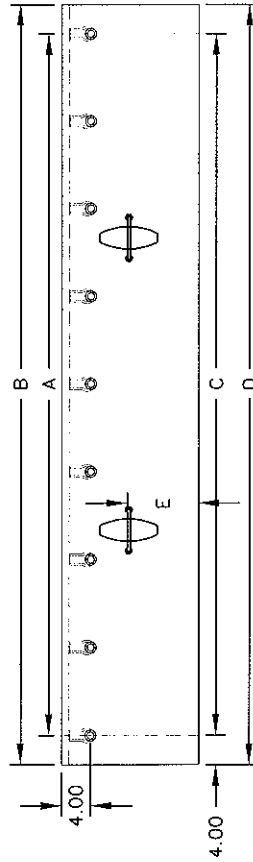
ACCEPTED	JRS 3-23-09
ACCEPTED AS NOTED	
NOT ACCEPTED	

For general conformance with design plans and specifications only. Does not relieve contractor from responsibility for errors or omissions.



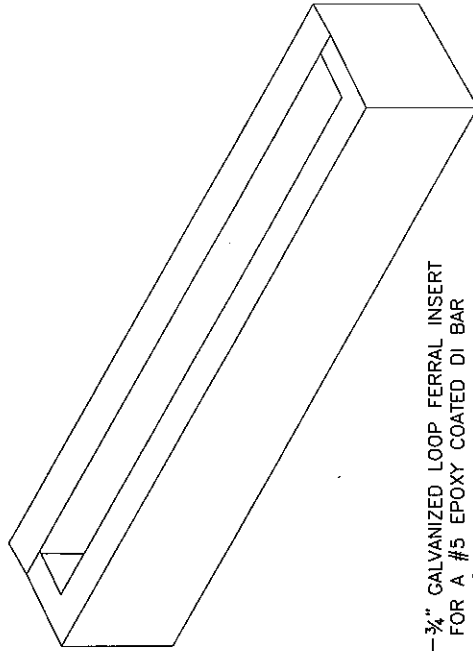
GALVANIZED UTILITY ANCHOR (TYP. OF 4)

TOP SLOPED 1"

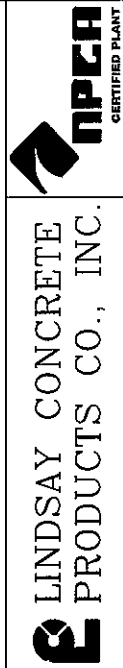


3/4" GALVANIZED LOOP FERRAL INSERT FOR A #5 EPOXY COATED DI BAR WITH 3/4" THREAD PROVIDED BY LINDSAY CONCRETE

\* = LINDSAY CONCRETE STANDARD IS 19.17". CONTRACTOR TO TIP BASIN TO MATCH ROAD SLOPE.



LET	REVISIONS	DATE	BY
NC	INITIAL RELEASE		AY



THIS DRAWING IS THE PROPRIETARY PROPERTY OF LINDSAY CONCRETE. REPRODUCTION, DISCLOSURE OR USE OF ANY PART OF THIS DRAWING OR ANY INFORMATION THEREIN IS EXPRESSLY PROHIBITED WITHOUT PRIOR WRITTEN CONSENT OF LINDSAY CONCRETE.

CUSTOMER: LINDSAY CONCRETE PRODUCTS CO., INC.  
 JOB: TYPE A EXFILTRATION TRENCH  
 STANDARD O.D.O.T. W/O CURB

DRAWN BY: AY  
 CHECKED BY: JD  
 SCALE: NTS  
 DATE: 12/18/08  
 DWG. NO. EXFIL TYPE A

NOTE: STEEL SHALL BE EPOXY COATED CONFORMING TO CMS 509.02 & CMS 709.00 AND BE SUFFICIENT ENOUGH TO PERMIT SHIPPING WITHOUT DAMAGE CONCRETE PER CMS 511.

	A	B	C	D	E	F
48.00	48.00	56.00	47.50	55.50	14.00	16.00
96.00	96.00	104.00	95.50	103.50	10.00	28.00

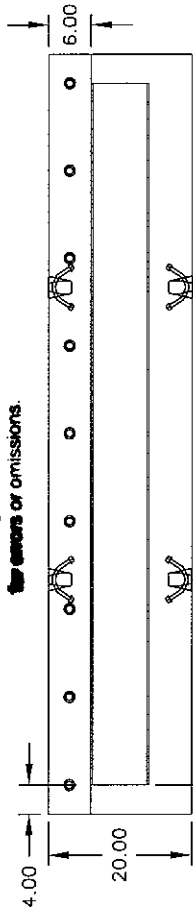
# STRUCTURAL ENGINEERING

*Tim Keller*

Administrator

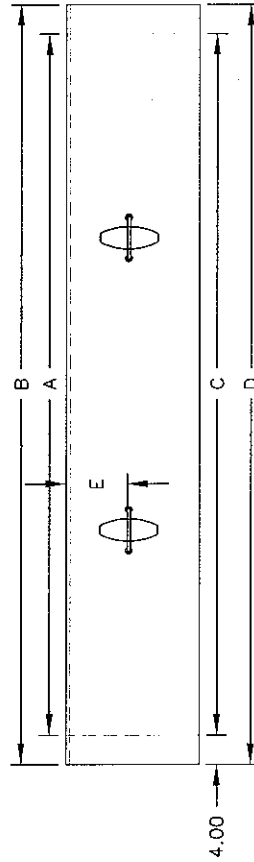
ACCEPTED  
 3/5 3-23-09  
 ACCEPTED AS NOTED  
 NOT ACCEPTED

For general conformance with design plans and specifications only. Does not relieve contractor from responsibility for errors or omissions.



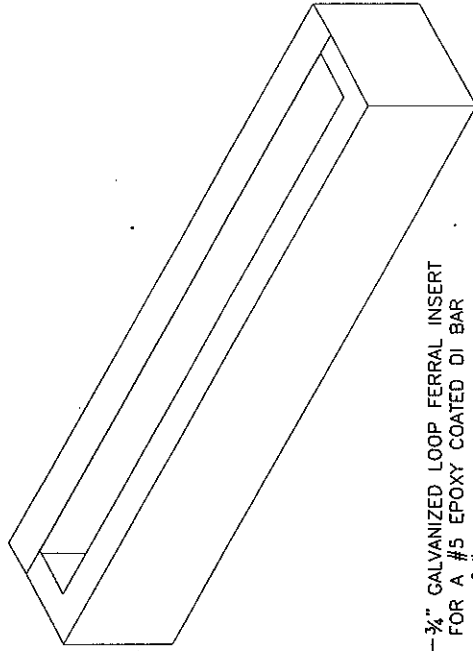
GALVANIZED UTILITY ANCHOR (TYP. OF 4)

TOP SLOPED 1/2"

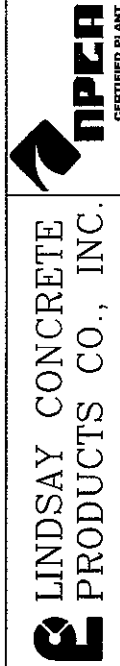


3/4" GALVANIZED LOOP FERRAL INSERT FOR A #5 EPOXY COATED DI BAR WITH 3/4" THREAD PROVIDED BY LINDSAY CONCRETE

\* = LINDSAY CONCRETE STANDARD IS 18.59"±. CONTRACTOR TO TIP BASIN TO MATCH ROAD SLOPE.



LET	REVISIONS	DATE	BY
NC	INITIAL RELEASE		AK



THIS DRAWING IS THE PROPRIETARY PROPERTY OF LINDSAY CONCRETE. REPRODUCTION, DISCLOSURE OR USE OF ANY PART OF THIS DRAWING OR ANY INFORMATION THEREIN IS EXPRESSLY PROHIBITED WITHOUT PRIOR WRITTEN CONSENT OF LINDSAY CONCRETE.

CUSTOMER: TYPE B EXFILTRATION TRENCH  
 JOB: STANDARD O.D.O.T.  
 DRAWN BY: AY  
 CHECKED BY: JD  
 DATE: 12/18/08  
 SCALE: NTS  
 DWG. NO.: EXFIL TYPE B

NOTE: STEEL SHALL BE EPOXY COATED CONFORMING TO CMS 509.02 & CMS 709.00 AND BE SUFFICIENT ENOUGH TO PERMIT SHIPPING WITHOUT DAMAGE CONCRETE PER CMS 511.

	A	B	C	D	E	F
	48.00	48.00	56.00	47.50	55.50	14.00
	96.00	96.00	104.00	95.50	103.50	10.00
						28.00

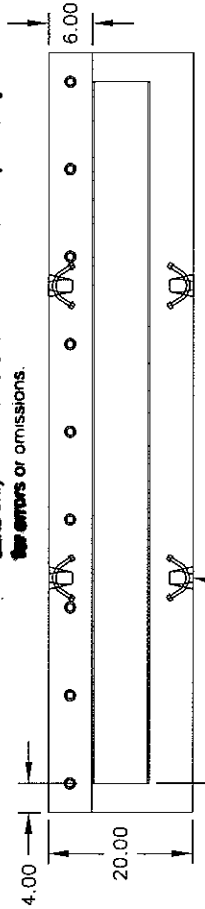
# STRUCTURAL ENGINEERING

*Tom Keller*

Administrator

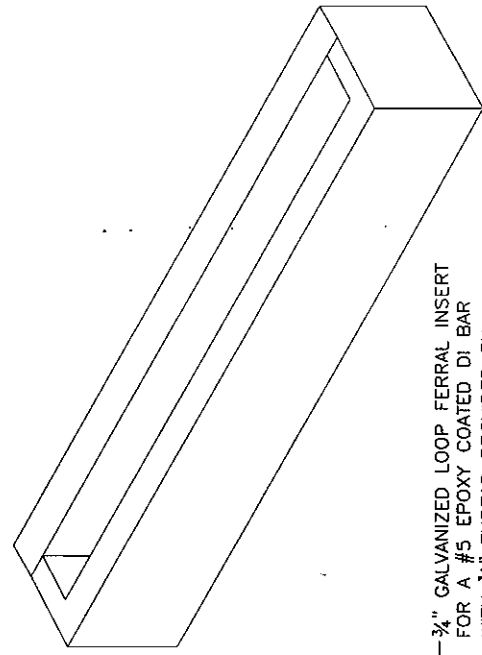
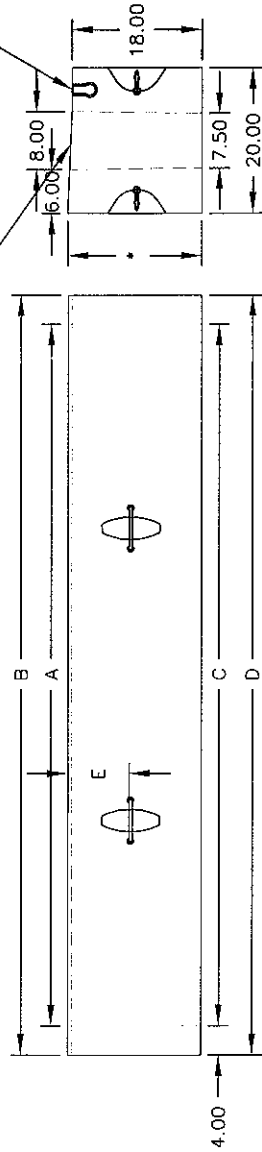
ACCEPTED	JR 3-23-09
ACCEPTED AS NOTED	
NOT ACCEPTED	

For general conformance with design plans and specifications. Does not relieve contractor from responsibility for errors or omissions.



GALVANIZED UTILITY ANCHOR (TYP. OF 4)

TOP SLOPED 1/2"



3/4" GALVANIZED LOOP FERRAL INSERT FOR A #5 EPOXY COATED DI BAR WITH 3/4" THREAD PROVIDED BY LINDSAY CONCRETE

\* = LINDSAY CONCRETE STANDARD IS 18.59"±. CONTRACTOR TO TIP BASIN TO MATCH ROAD SLOPE.

**LINDSAY CONCRETE PRODUCTS CO., INC.**

THIS DRAWING IS THE PROPRIETARY PROPERTY OF LINDSAY CONCRETE. REPRODUCTION, DISCLOSURE OR USE OF ANY PART OF THIS DRAWING OR ANY INFORMATION THEREIN IS EXPRESSLY PROHIBITED WITHOUT PRIOR WRITTEN CONSENT OF LINDSAY CONCRETE.

CUSTOMER: **TYPE C EXFILTRATION TRENCH**

JOB: **STANDARD O.D.O.T. w/o CURB**

DRAWN BY: **AY** CHECKED BY: **JD** SCALE: **NTS** DATE: **12/18/08** DWG. NO. **EXFIL TYPE C**

NOTE: STEEL SHALL BE EPOXY COATED CONFORMING TO CMS 509.02 & CMS 709.00 AND BE SUFFICIENT ENOUGH TO PERMIT SHIPPING WITHOUT DAMAGE CONCRETE PER CMS 511.

A	B	C	D	E	F
48.00	48.00	56.00	47.50	55.50	14.00
96.00	96.00	104.00	95.50	103.50	10.00
					28.00

LET	REVISIONS	DATE	BY
NC	INITIAL RELEASE		AY