

# Welcome

- ④ **Sign-In (or leave business card) for Certificate (to be mailed) and grab an agenda**
- ④ **Facilities**
- ④ **Lunch – 11:45 to 12:30**
  
- ④ **4.75 CPD hours available**



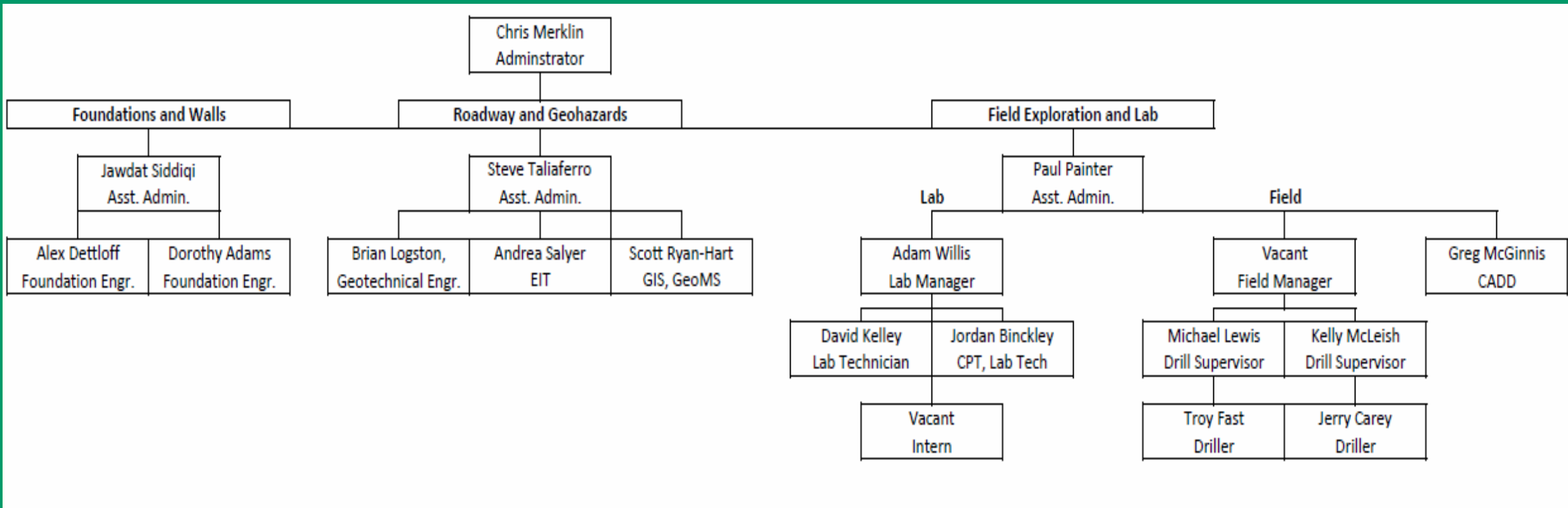
# Agenda

- ④ Introduction of ODOT Geotechnical Staff
- ④ Overview of Geotechnical Fee Guidance and Proposal Format Changes
- ④ The Geotechnical Part of the SAFe System
- ④ ODOT Geotechnical Research Progress Report
- ④ Assessment of Performance of Reinforced Soil Slopes on ODOT Projects; Misc. SGE and GeoMS Items
- ④ Overview of gINT Library and New Tools for Converting Logs Into Soil Profile Sticks
- ④ Lunch – 45 minutes (11:45 – 12:30)
- ④ Overview of ODOT – OGE Exploratory Methods
- ④ Construction Technical Process Reviews, Sulfate Testing Multi-Lab Comparison, Supplement 1122 replacing TEX-145-E
- ④ Proposed Revisions to Foundation and Retaining Wall Design Requirements
- ④ General Question/Answer



# OGE Staff

## David Slatzer, Deputy Director, Division of Engineering



# Construction Geotechnical Engineer

- ④ **Steve Slomski, Office of Construction Administration**
  - ④ Earthwork Specification Committee Chair
    - ④ (Specifications, Supplemental Specifications, Supplements, Construction Manual of Procedures)
  - ④ Construction issues related to:
    - ④ Subgrade and Chemical Stabilization; Aggregate Base
    - ④ Bridge Foundations, MSE Walls, Retaining Walls, Embankments
  - ④ Technical Process Reviews related to earthwork and foundations construction
  - ④ Staff training – HT Academy courses and District winter construction schools



# District Geotechnical Engineers

✉ D-1: Derrick Schierloh

✉ D-2: Doug Rogers

✉ D-3: Nick Foster

✉ D-4: Amal Goza

✉ D-5: Nikunj Kadakia

✉ D-6: Jeff Hipp

✉ D-7: Dan Grilliot

✉ D-8: Joe Smithson (Adam Koenig)

✉ D-9: Chris Pridemore

✉ D-10: Andy Moreland

✉ D-11: Cody Notz

✉ D-12: Bryan Emery

