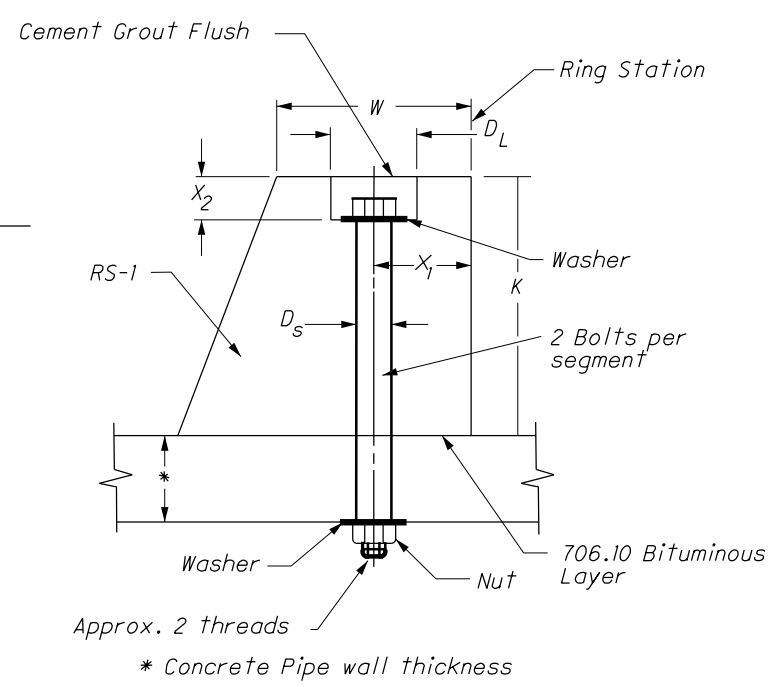


RING CHAMBER PROFILE



VIEW "A" @ BOLT C (Typical)

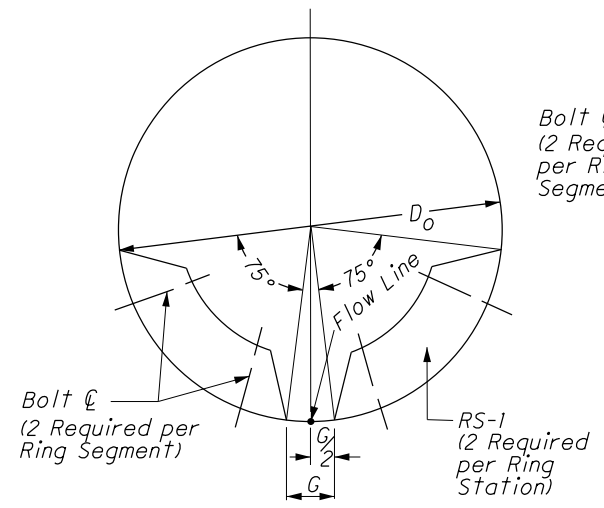
TABLE OF RING CHAMBER DATA FOR EACH PIPE SIZE (D<sub>o</sub>)

D <sub>o</sub>		K		W		D <sub>s</sub>		D <sub>L</sub>		X <sub>1</sub>		X <sub>2</sub>		G		Bolt Size		L <sub>o</sub>		(1) 8' Sections		(1) 6' Sections						
Inches	mm	Inches	mm	Inches	mm	Inches	mm	Inches	mm	Inches	mm	Inches	mm	Inches	mm	Inches	mm	Feet	Meter	Ft.	m	Ft.	m	Ft.	m			
36	914	4	102	4	102	0.625	16	1.5	38	2.0	51	1.0	25	4	102	0.50	13	40	12	3	0.9	6	1.8	3	0.9	6	1.8	
42	1067	5	127	5	127	0.625	16	2.0	51	2.5	62	1.0	25	4	102	0.50	13	40	12			6	1.8			6	1.8	
48	1219	6	152	6	152	0.750	19	2.0	51	3.0	76	1.25	32	5	127	0.625	16	48	15			8	2.4			8	2.4	
54	1372	7	178	7	178	1.000	25	3.0	76	3.5	89	1.5	38	5	127	0.750	19	48	15			8	2.4			8	2.4	
60	1524	7	178	7	178					3.5	89			6	152			48	15			8	2.4	3	0.9	8	2.4	
66	1676	8	203	8	203					4.0	102							56	17					7	2.1	9	2.7	
72	1829	8	203	8	203	1.000	25			4.0	102							56	17	3	0.9	9	2.7	7	2.1	9	2.7	
78	1981	10	254	8	203	1.250	32	3.0	76	4.0	102	1.5	38	6	152	1.00	25	72	22	7	2.1	12	3.7	8	2.4	12	3.7	
84	2134	12	305	9	229	1.625	41	4.0	102	4.5	114	2.0	51	8	203	1.250	32	72	22	7	2.1	12	3.7	8	2.4	12	3.7	
90	2286													8	203			72	22	7	2.1	12	3.7	8	2.4	12	3.7	
96	2438													12	305			96	29	6	1.8	16	4.9	5	1.5	15	4.6	
102	2591																											
108	2743	12	305																									
114	2896	14	356																									
120	3048	14	356	9	229	1.625	41			4.5	114	2.0	51			1.250	32	96	29	6	1.8	16	4.9	5	1.5	15	4.6	
126	3200	15	381	10	254	1.750	44			5.0	127	2.5	64			1.50	38	112	34	7	2.1	20	6.1	9	2.7	18	5.5	
132	3353	15	381															112	34	7	2.1	20	6.1	9	2.7	18	5.5	
138	3505	18	457															112	34	7	2.1	20	6.1	9	2.7	18	5.5	
144	3658																	128	39	6	1.8	24	7.3	7	2.1	24	7.3	
150	3810																											
156	3962	18	457	10	254			4.0	102	5.0	127			24	610													
162	4115	20	508	12	305	1.750	44	5.0	127	6.0	152	2.5	64	24	610	1.50	38	128	39	6	1.8	24	7.3	7	2.1	24	7.3	

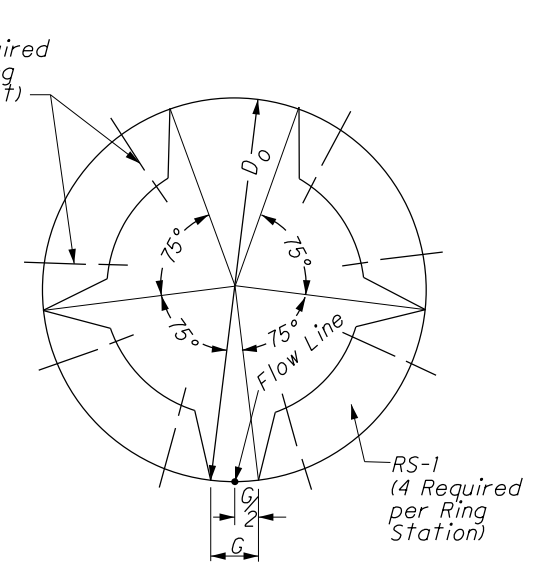
NOTES:

The Ring Chamber is to be made from the strength and size of concrete pipe specified in the plans. The Ring segments shall be pre-cast according to RS-1 and assembled into pipe sections according to this drawing at the pre-cast facility. A 706.10 Bituminous coat will be placed between each Ring segment and the pipe section. Each bolt head cavity must be grouted flush with cement grout. All bolts, nuts, and washers must be galvanized as per section 711.02. The bolt lengths will permit full engagement of all threads of the nuts (minimum). The Ringed Sections must be delivered to the Project marked as needed and ready to lay similar to any other concrete pipe sections.

(1) These L<sub>1</sub> and L dimensions are to be used when 8' or 6' long pipe sections are delivered respectively.



TYPE "A" RING CHAMBER STATION (Typical)



TYPE "B" RING CHAMBER STATION (Typical)