

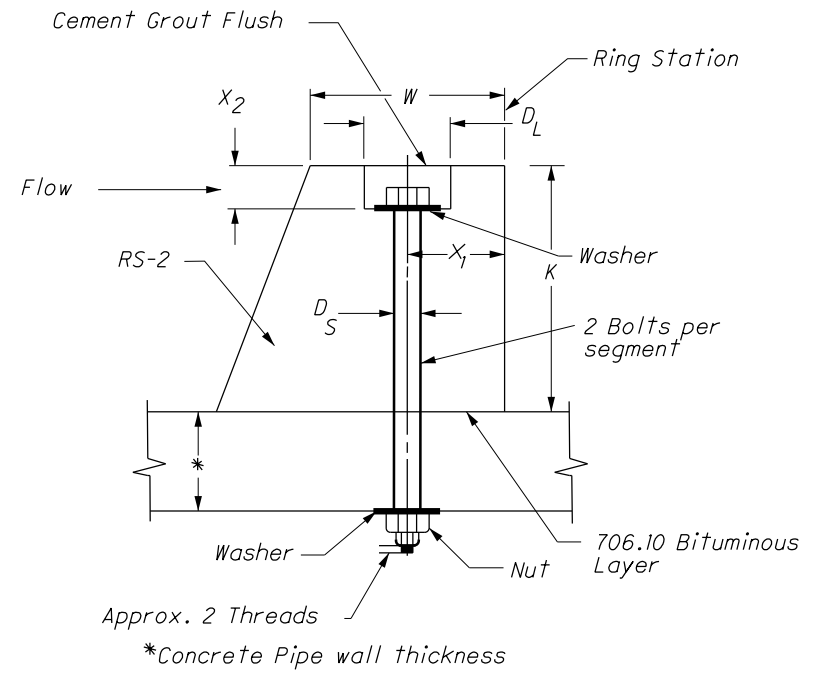
RING CHAMBER PROFILE

TABLE OF RING CHAMBER DATA FOR EACH PIPE SIZE (D_o)

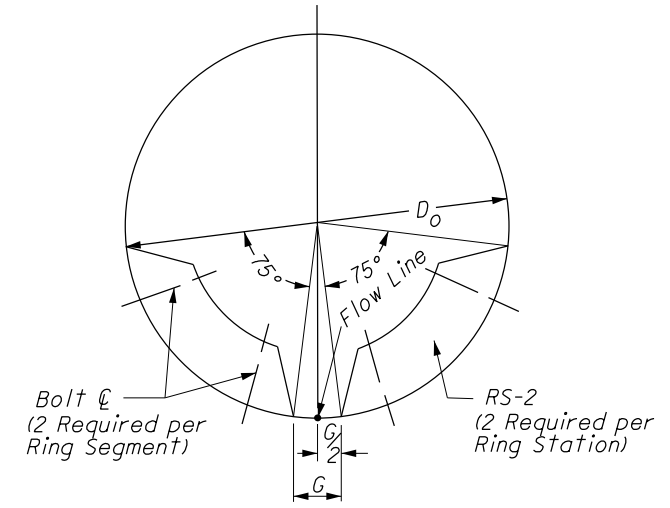
D _o		K		W		D _S		D _L		X ₁		X ₂		G		Bolt Size		L _o		L ₁		L	
Inches	mm	Inches	mm	Inches	mm	Inches	mm	Inches	mm	Inches	mm	Inches	mm	Inches	mm	Inches	mm	Feet	Meter	Ft.	m	Ft.	m
36	914	6	152	4	102	0.625	16	1.5	38	2.00	51	1.00	25	5	127	0.50	13	16	5	3	0.9	3	0.9
42	1067	7	178	5	127	0.625	16	2.0	51	2.50	64	1.00	25	5	127	0.50	13	24	7	5	1.5	5	1.5
48	1219	8	203	6	152	0.750	19	2.0	51	3.00	76	1.25	32	6	152	0.625	16			5	1.5		
54	1372	9	229	7	178	1.000	25	3.0	76	3.30	84	1.50	38	7	178	0.750	19			4	1.2		
60	1524	10	254	7	178					3.50	90			8	203			24	7	4	1.2	5	1.5
66	1676	11	279	8	203					4.00	102			8	203			32	10	6	1.8	6	1.8
72	1829	12	305	8	203	1.000	25			4.00	102			9	229	0.750	19	32	10	6	1.8	6	1.8
78	1981	13	330	8	203	1.250	32	3.0	76	4.00	102	1.50	38	10	254	1.00	25	40	12	7	2.1	7	2.1
84	2134	14	356	9	229	1.625	41	4.0	102	4.50	113	2.00	51	11	279	1.250	32					7	2.1
90	2286	15	381											11	279							8	2.4
96	2438	16	406											12	305			40	12	7	2.1	8	2.4
102	2591	17	432							4.50	113			12	305			48	15	10	3.0	10	3.0
108	2743	18	457	9	229					5.00	127			13	330			48	15				
114	2896	19	483	10	254									14	356			48	15				
120	3048	20	508			1.625	41					2.00	51	15	381	1.250	32	56	17	10	3.0	10	3.0
126	3200	21	533			1.750	44					2.50	64	16	406	1.50	38	56	17	11	3.4	11	3.4
132	3353	22	559											17	432			56	17			11	3.4
138	3505	23	584											17	432			64	20			11	3.4
144	3658	24	610							5.00	127			18	457			64	20			12	3.7
150	3810	25	635							5.50	140			19	483			64	20	11	3.4	12	3.7
156	3962	26	660	10	254			4.0	102	5.50	140			20	508			72	22	12	3.7	13	4.0
162	4115	27	686	12	305	1.750	44	5.0	127	6.00	152	2.50	64	20	508	1.50	38	72	22	12	3.7	13	4.0

NOTES:

The Ring Chamber is to be made from the strength and size of concrete pipe specified in the plans. The Ring segments shall be pre-cast according to RS-2 and assembled into pipe sections according to this drawing at the pre-cast facility. A 706.10 Bituminous coat will be placed between each Ring segment and the pipe section. Each bolt head cavity must be grouted flush with cement grout. All bolts, nuts, and washers must be galvanized as per section 711.02. The bolt lengths will permit full engagement of all threads of the nuts (minimum). The Ringed Sections must be delivered to the Project marked as needed and ready to lay similar to any other concrete pipe sections.



VIEW "A" @ BOLT C (Typical)



RING CHAMBER STATION (Typical)

THIS DRAWING REPLACES PIS RC-2 DATED 07-16-1984.