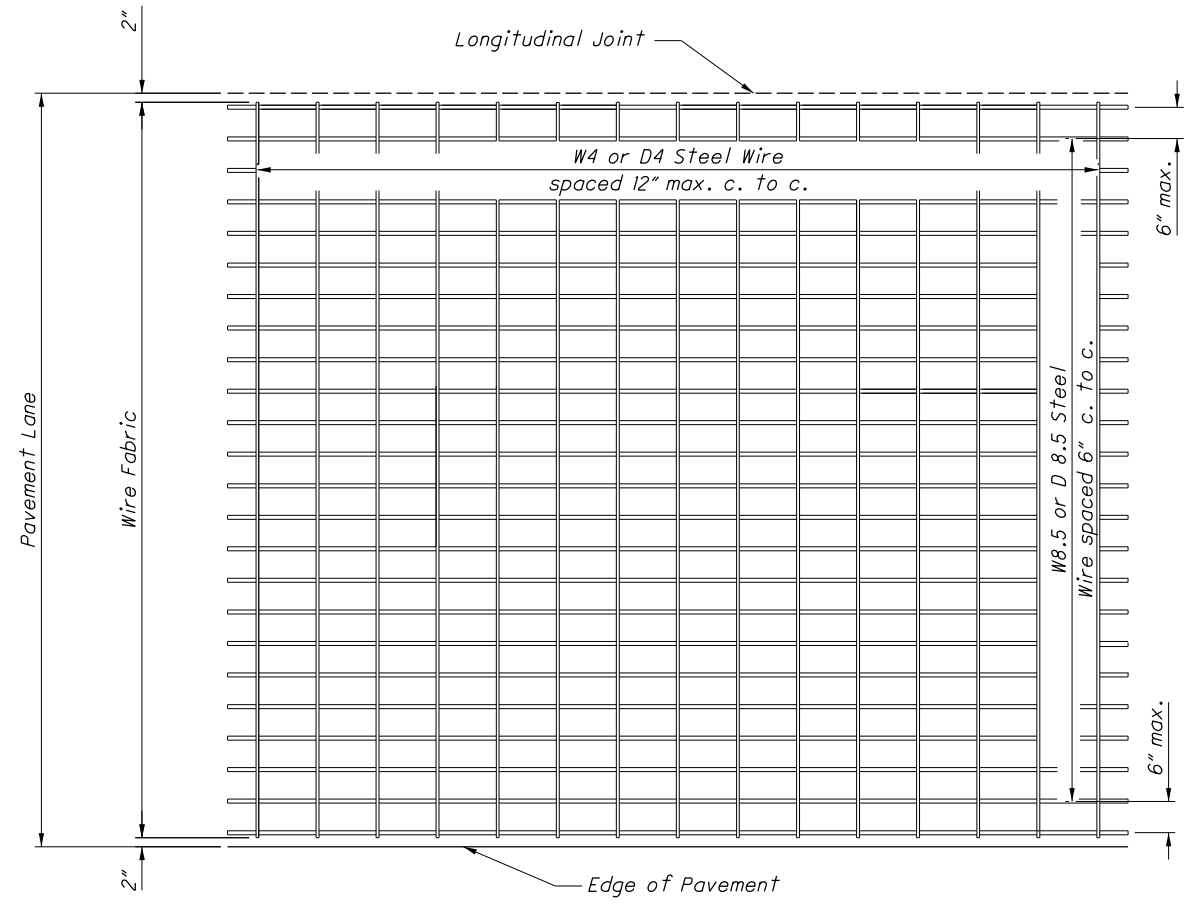
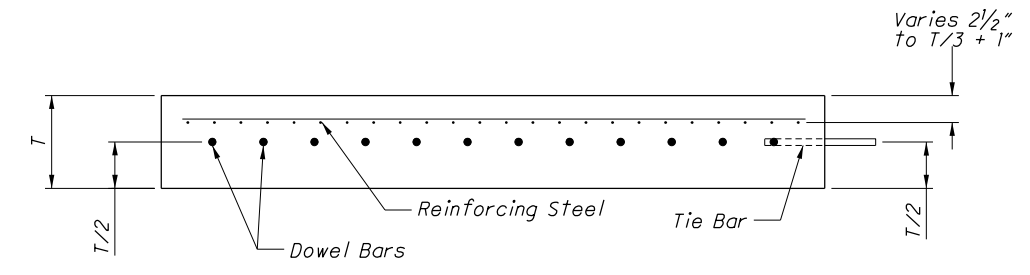


PLAN



WIRE FABRIC DETAIL



SECTION A-A

NOTES

STEEL REINFORCING: In normal or wider lane widths, reinforcing may consist of two units with an approved longitudinal hinge. The hinge shall consist of W4 or D4 steel wires connecting the two units such that the longitudinal members on either side of the hinge will be properly spaced when the reinforcing is in the final position.

Reinforcing steel in final position shall not touch either the dowels or tie bars.

THIS DRAWING REPLACES BP-1.1 DATED 10-28-94.

SD NUMBER
BP-1.1

STANDARD ROADWAY CONSTRUCTION DRAWING
CONCRETE PAVEMENT REINFORCING

OFFICE OF
**PAVEMENT
ENGINEERING**

STDS.
ENGINEER
M. Evans

STATE OF OHIO DEPARTMENT OF
TRANSPORTATION ADMINISTRATOR
Larry F. Sutherland

REVISION DATE
7-28-2000