

SECTION A - A (END SPAN)

CL OF ANCHORS USED FOR BRIDGE RAILING  
IN STANDARD DRAWING

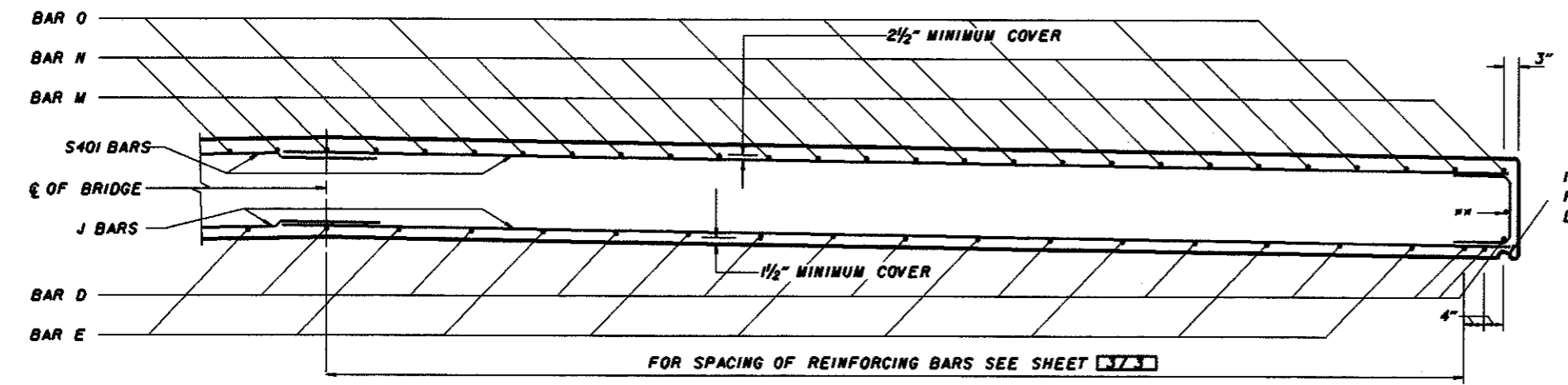
**CONSTRUCTION JOINTS:**  
PLACEMENT OF THE CONCRETE DECK SLAB SHALL BE CONTINUOUS. CONSTRUCTION JOINTS SHALL BE PROVIDED ONLY IF A DECK POUR CANNOT BE COMPLETED DUE TO INCLEMENTE CONDITIONS. THE CONSTRUCTION JOINT SHALL CONFORM TO THE REQUIREMENTS OF 511 IN THE CMS.

**CAMBER:**  
CAMBER AS SHOWN IN THE SLAB AND REINFORCING TABLES SHALL BE PROVIDED TO COMPENSATE DEAD LOAD DEFLECTIONS, IN ADDITION TO ANY CAMBER REQUIRED FOR CONFORMANCE WITH THE PROFILE OF THE HIGHWAY. ALLOWANCE SHALL BE MADE FOR THE DEFLECTION OF ANY FALSEWORK MEMBERS SUPPORTING THE ACTUAL CONCRETE PLACEMENT.

**EDGE BEAM OPTION:**  
IN LIEU OF FORMING AN EDGE BEAM, THE CONTRACTOR MAY FURNISH A 16" SLAB OR A SLAB VARYING IN THICKNESS FROM 16" AT THE EDGE TO "T" AT THE CENTER OF THE ROADWAY AT NO ADDITIONAL COST TO THE OWNER.

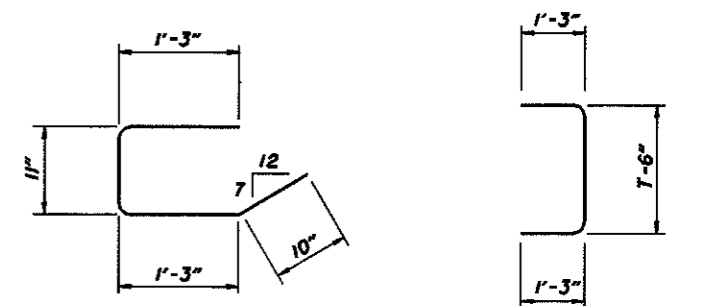
**EXPANSION:**  
PROVISIONS SHALL BE MADE FOR EXPANSION WHEN THE BRIDGE LENGTH EXCEEDS 250 FEET OR WHEN A RIGID SUBSTRUCTURE (OTHER THAN A SINGLE LINE OF PILES) IS EMPLOYED.

\*\* USE T401 BAR ONLY WITH T GREATER THAN 21"

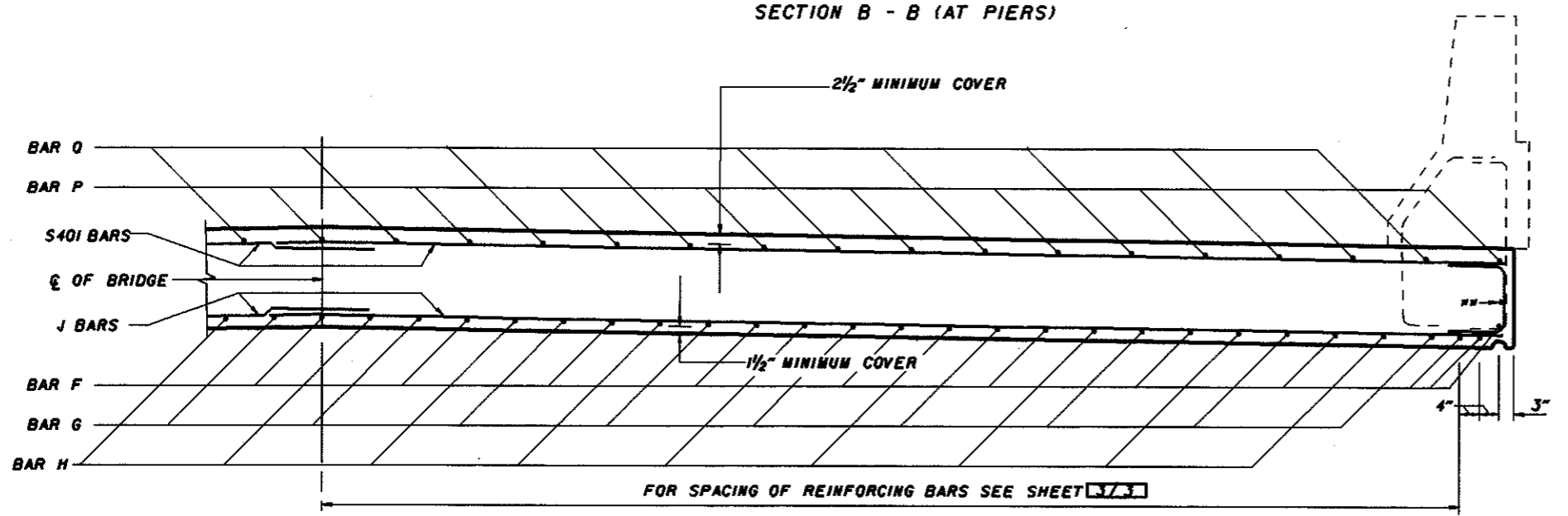


SECTION B - B (AT PIERS)

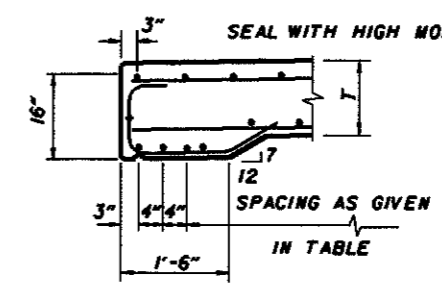
1" DIAMETER HALF ROUND DRIP GROOVE (TYP.)



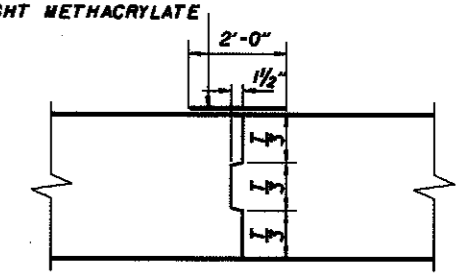
U401 BARS LENGTH - 4'-1" U402 BARS LENGTH - T+1'-10"



SECTION D - D (INTERIOR SPAN(S))



(EDGE BEAM DETAIL) FOR T < 16"



CONSTRUCTION JOINT

REVISIONS 6-30-95	STATE OF OHIO DEPARTMENT OF TRANSPORTATION BUREAU OF BRIDGES AND STRUCTURAL DESIGN	2/3
STANDARD		
CONTINUOUS SLAB BRIDGE		
APPROVED: <i>B.D. Frankelme</i>	ENGINEER OF BRIDGES	DRAWING NO. CS-1-93
DATE: 5-11-93		
DESIGNED: ASB	CHECKED: JC	APPROVED: RCI, LMW