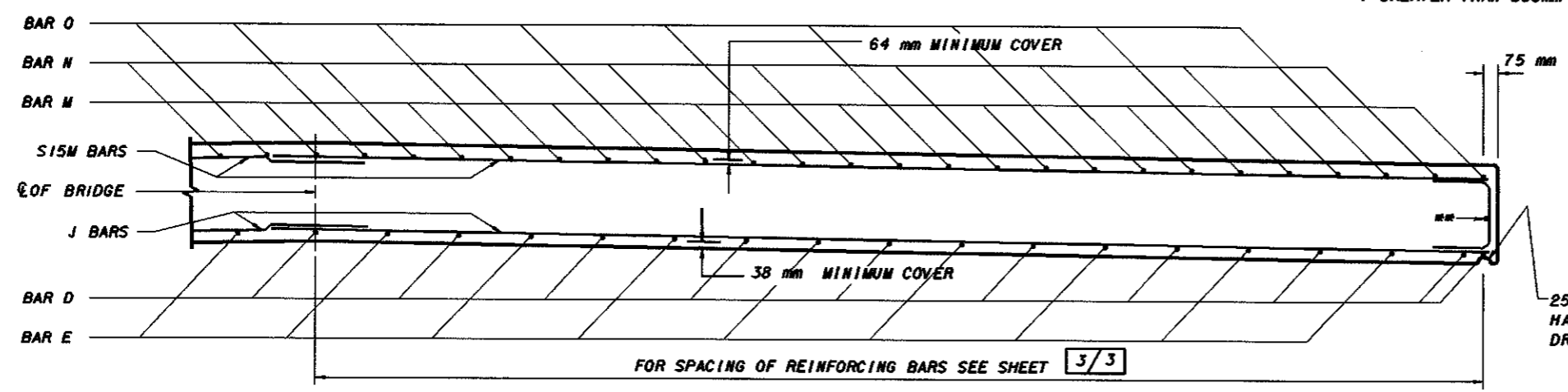
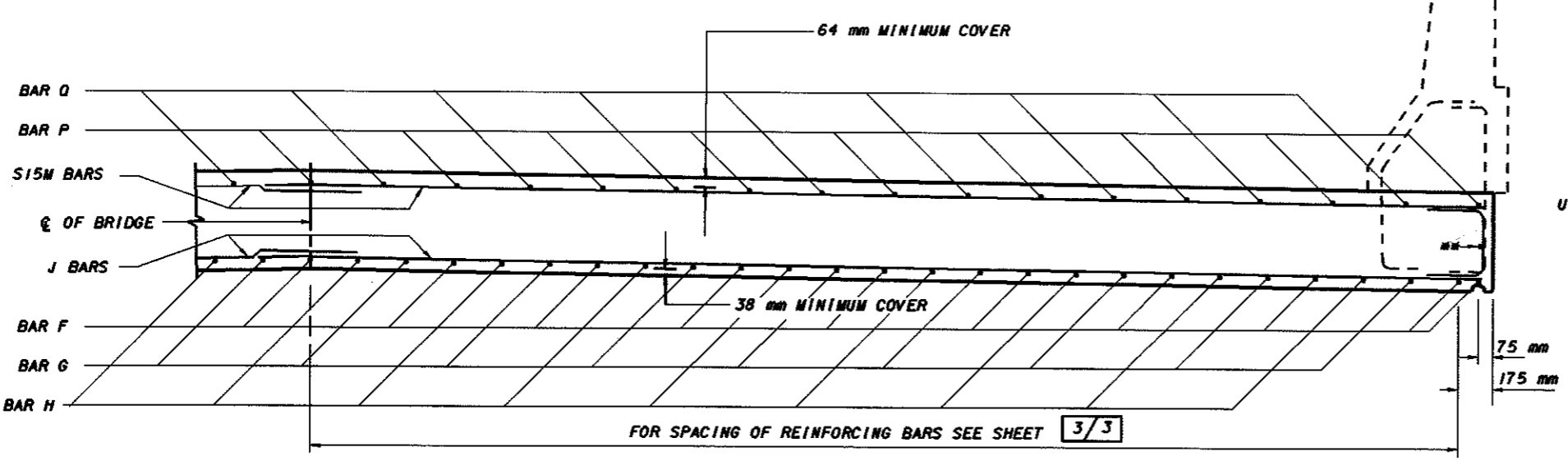


**SECTION A - A (END SPAN)**

\*\* USE T15M01 BAR ONLY WITH T GREATER THAN 533mm



**SECTION B - B (AT PIERS)**



**SECTION D - D (INTERIOR SPAN(S))**

Ø OF ANCHORS USED FOR BRIDGE RAILING IN STANDARD DRAWING

U15M02 (TYP.)

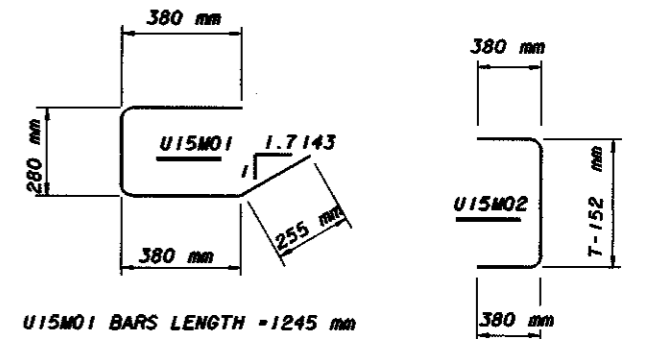
**CONSTRUCTION JOINTS:**  
PLACEMENT OF THE CONCRETE DECK SLAB SHALL BE CONTINUOUS. CONSTRUCTION JOINTS SHALL BE PROVIDED ONLY IF A DECK POUR CANNOT BE COMPLETED DUE TO INCLEMENT CONDITIONS. THE CONSTRUCTION JOINT SHALL CONFORM TO THE REQUIREMENTS OF 511 OF THE CMS.

**CAMBER:**  
CAMBER AS SHOWN IN THE SLAB AND REINFORCING TABLES SHALL BE PROVIDED TO COMPENSATE FOR THE DEAD LOAD DEFLECTIONS IN ADDITION TO ANY CAMBER REQUIRED FOR CONFORMANCE WITH THE PROFILE OF THE HIGHWAY. ALLOWANCE SHALL BE MADE FOR THE DEFLECTION OF ANY FALSE-WORK MEMBERS SUPPORTING THE ACTUAL CONCRETE DURING PLACEMENT.

**EDGE BEAM OPTION:**  
IN LIEU OF FORMING AN EDGE BEAM, THE CONTRACTOR MAY FURNISH A 405 mm SLAB OR A SLAB VARYING IN THICKNESS FROM 405 mm AT THE EDGE TO "T" AT THE CENTER OF THE ROADWAY AT NO ADDITIONAL COST TO THE OWNER.

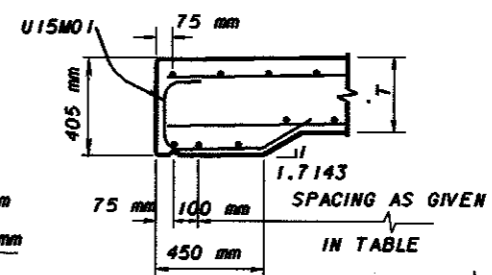
**EXPANSION:**  
PROVISIONS SHALL BE MADE FOR EXPANSION WHEN THE BRIDGE LENGTH EXCEEDS 76 200 mm OR WHEN A RIGID SUBSTRUCTURE (OTHER THAN A SINGLE LINE OF PILES) IS EMPLOYED.

25 mm DIAMETER HALF ROUND DRIP GROOVE (TYP.)

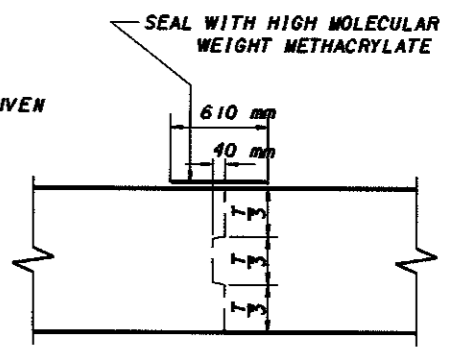


U15M01 BARS LENGTH = 1245 mm

U15M02 BARS LENGTH = T+559 mm



**EDGE BEAM DETAIL**  
FOR T < 406 mm



**CONSTRUCTION JOINT**