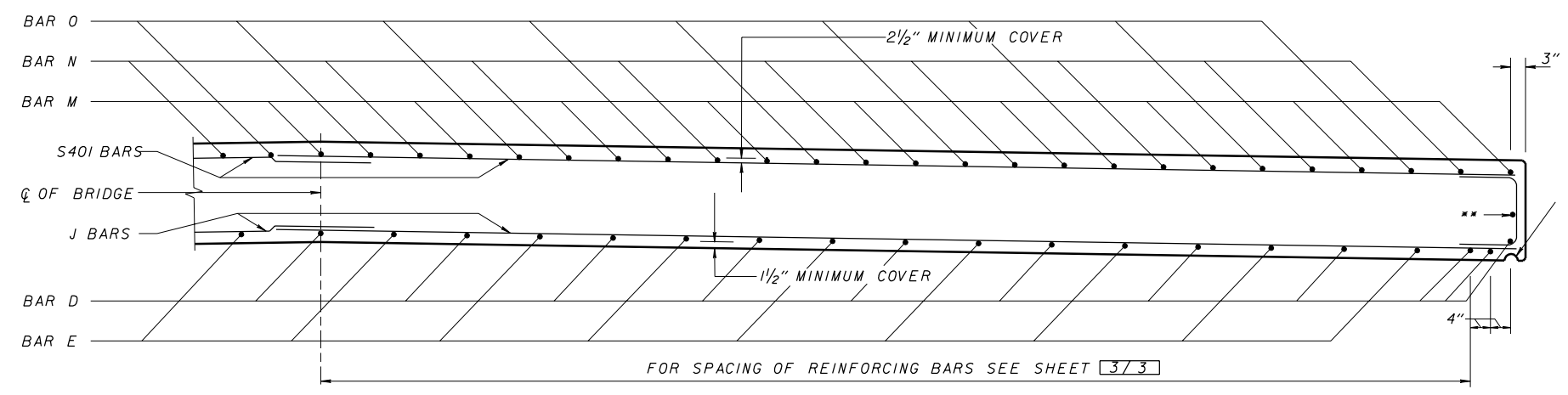
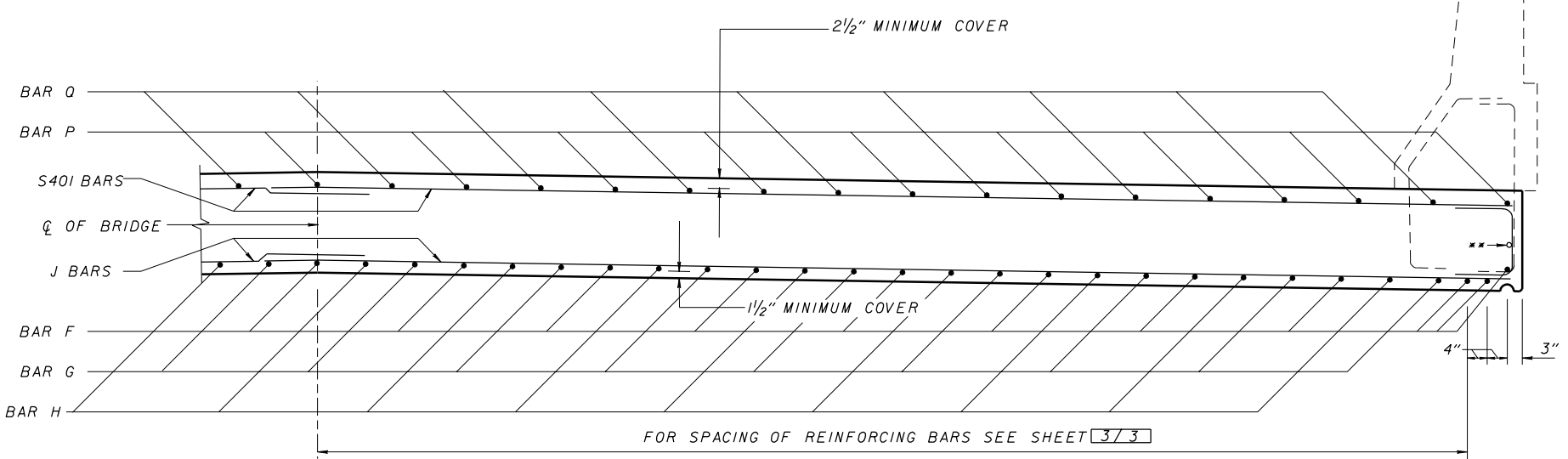


SECTION A - A (END SPAN)



SECTION B - B (AT PIERS)



SECTION D - D (INTERIOR SPAN(S))

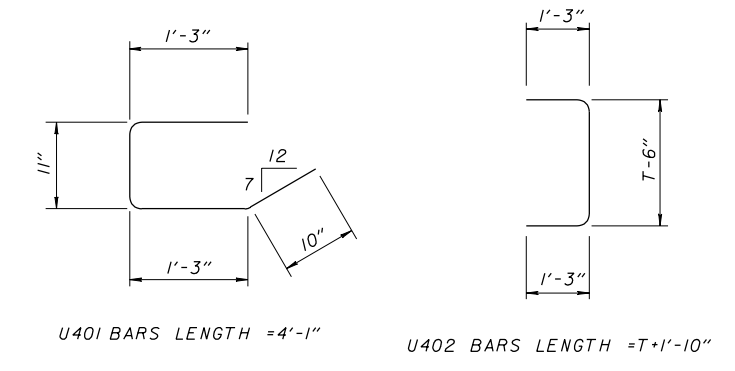
** USE T401 BAR ONLY WITH T GREATER THAN 21"

CAMBER:
CAMBER AS SHOWN IN THE SLAB AND REINFORCING TABLES SHALL BE PROVIDED TO COMPENSATE DEAD LOAD DEFLECTION IN ADDITION TO ANY CAMBER REQUIRED FOR CONFORMANCE WITH THE PROFILE OF THE HIGHWAY. ALLOWANCE SHALL BE MADE FOR THE DEFLECTION OF ANY FALLS WORK MEMBERS SUPPORTING THE ACTUAL CONCRETE PLACEMENT.

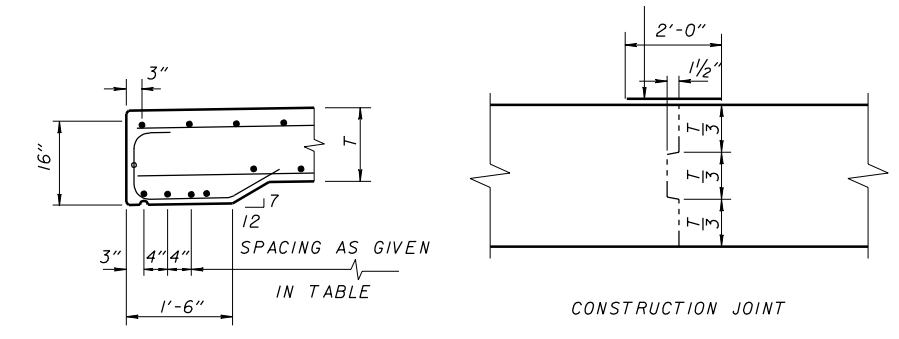
EDGE BEAM OPTION:
IN LIEU OF FORMING AN EDGE BEAM, THE CONTRACTOR MAY FURNISH A 16" SLAB OR A SLAB VARYING IN THICKNESS FROM 16" AT THE EDGE TO "T" AT THE CENTER OF THE ROADWAY AT NO ADDITIONAL COST TO THE OWNER.

EXPANSION:
PROVISIONS SHALL BE MADE FOR EXPANSION WHEN THE BRIDGE LENGTH EXCEEDS 250 FEET OR WHEN A RIGID SUBSTRUCTURE (OTHER THAN A SINGLE LINE OF PILES) IS EMPLOYED.

1" DIAMETER HALF ROUND DRIP GROOVE(TYP).



SEAL WITH HIGH MOLECULAR WEIGHT METHACRYLATE



(EDGE BEAM DETAIL)
FOR T < 16"