
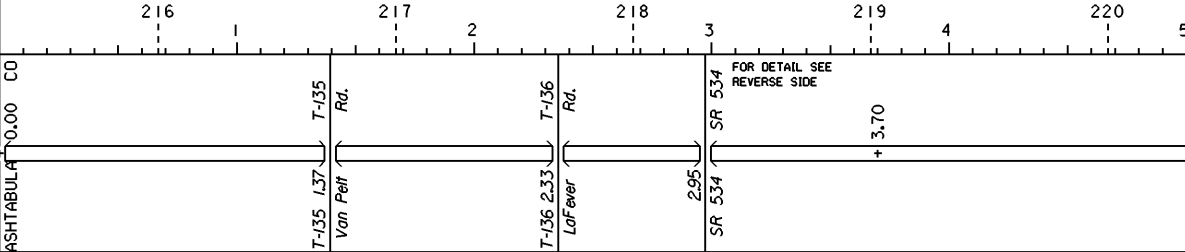


STATE OF OHIO - DEPARTMENT OF TRANSPORTATION

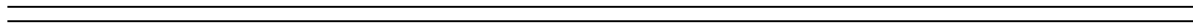
STATE ROUTE SECTIONS ON CONTINUOUS MILEAGE STATIONING

DISTRICT 4
 COUNTY ASHTABULA
 ROUTE IR 90

STATE LOG MILES	215.33	216	217	218	219	220
COUNTY LOG MILES	0.00					
VISIBLE FIXED POINTS DIRECTION OF SURVEY 						
STREET NAME						
SECTION IDENTIFICATION		0.00				3.70
SECTION LENGTH		3.70				3.86
SURFACE TYPE & WIDTH		G24' Δ G24'				D24' Δ D24'
BASE TYPE & WIDTH		P24' Δ P24'				
YEAR		1997				2005
PROJECT NUMBER		6001				108

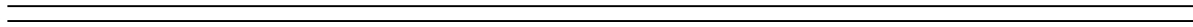
PERPETUATION

VISIBLE
 FIXED
 POINTS

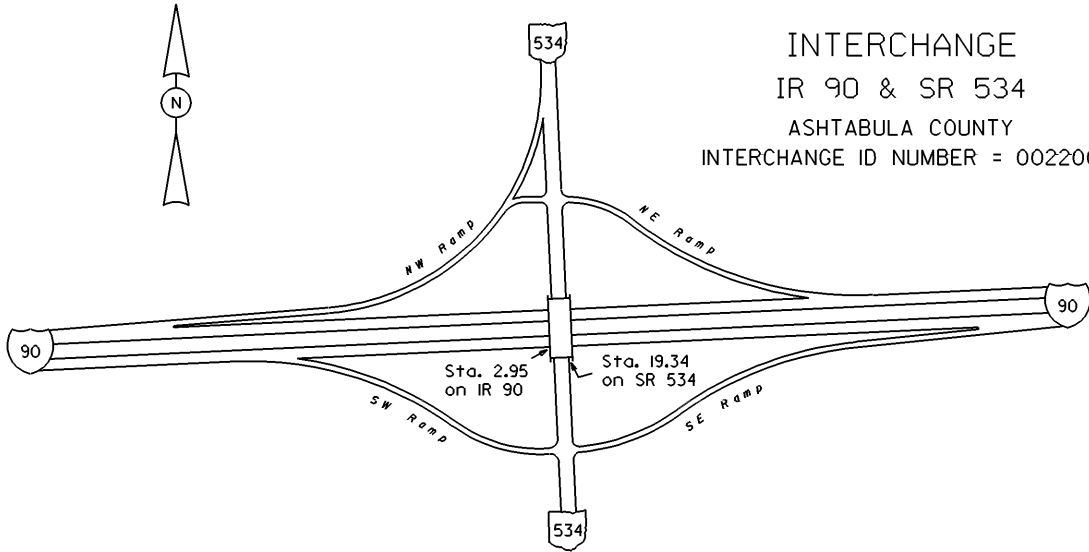


STREET NAME	
SECTION IDENTIFICATION	
SECTION LENGTH	
SURFACE TYPE & WIDTH	
BASE TYPE & WIDTH	
YEAR	
PROJECT NUMBER	

VISIBLE
 FIXED
 POINTS



STREET NAME	
SECTION IDENTIFICATION	
SECTION LENGTH	
SURFACE TYPE & WIDTH	
BASE TYPE & WIDTH	
YEAR	
PROJECT NUMBER	



INTERCHANGE
IR 90 & SR 534
ASHTABULA COUNTY
INTERCHANGE ID NUMBER = 002200


IR 90 SHEET 1 OF 6
SR 534 SHEET 4 OF 7

REVISED Jan 2008

STATE OF OHIO - DEPARTMENT OF TRANSPORTATION

STATE ROUTE SECTIONS ON CONTINUOUS MILEAGE STATIONING

DISTRICT 4
 COUNTY ASHTABULA
 ROUTE IR 90

STATE LOG MILES	220.33	221	6	222	7	223	8	224	9	225	10
COUNTY LOG MILES	5.00										
VISIBLE FIXED POINTS DIRECTION OF SURVEY 		C-218 Rd. 5.37'	T-229 Rd. 6.18'	C-16 Rd. 7.43'	C-16 St. Clay + 7.56'	SR 45 7.99'	FOR DETAIL SEE REVERSE SIDE		RR 9.06'	Rd. 9.31'	Moody Rd.
STREET NAME											
SECTION IDENTIFICATION		3.70						7.56			
SECTION LENGTH		3.86						12.00			
SURFACE TYPE & WIDTH		D24'△D24'						G24'△G24'			
BASE TYPE & WIDTH								P24'△P24'			
YEAR		2005						1999			2005
PROJECT NUMBER		108						5018			376

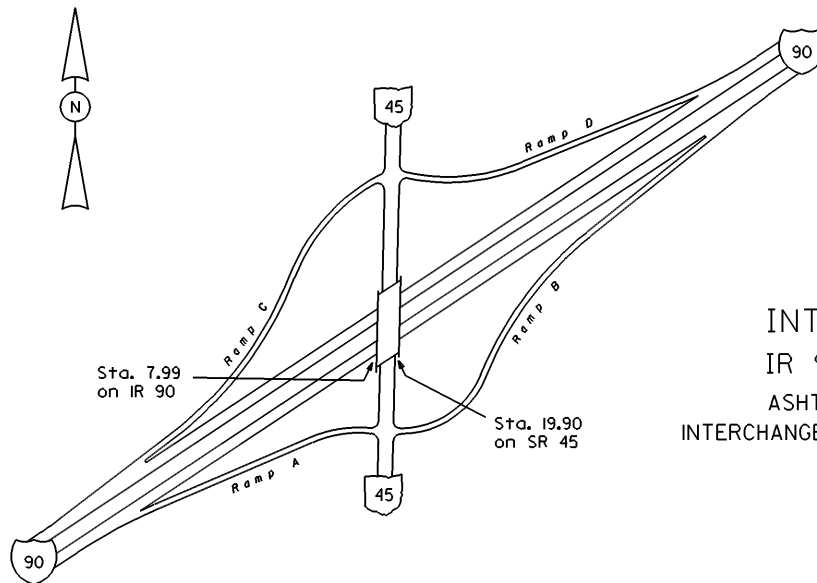
PERPETUATION

VISIBLE
 FIXED
 POINTS

STREET NAME	
SECTION IDENTIFICATION	
SECTION LENGTH	
SURFACE TYPE & WIDTH	
BASE TYPE & WIDTH	
YEAR	
PROJECT NUMBER	

VISIBLE
 FIXED
 POINTS

STREET NAME	
SECTION IDENTIFICATION	
SECTION LENGTH	
SURFACE TYPE & WIDTH	
BASE TYPE & WIDTH	
YEAR	
PROJECT NUMBER	



INTERCHANGE
IR 90 & SR 45
ASHTABULA COUNTY
INTERCHANGE ID NUMBER = 002300


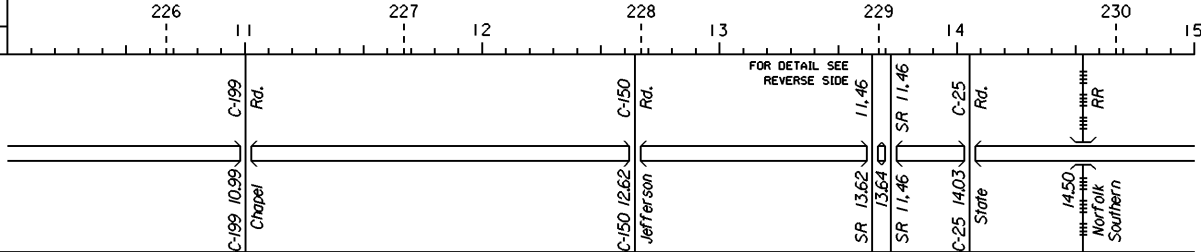
IR 90 SHEET 2 OF 6
SR 45 SHEET 4 OF 6

REVISED Jan 2008

STATE OF OHIO - DEPARTMENT OF TRANSPORTATION

STATE ROUTE SECTIONS ON CONTINUOUS MILEAGE STATIONING

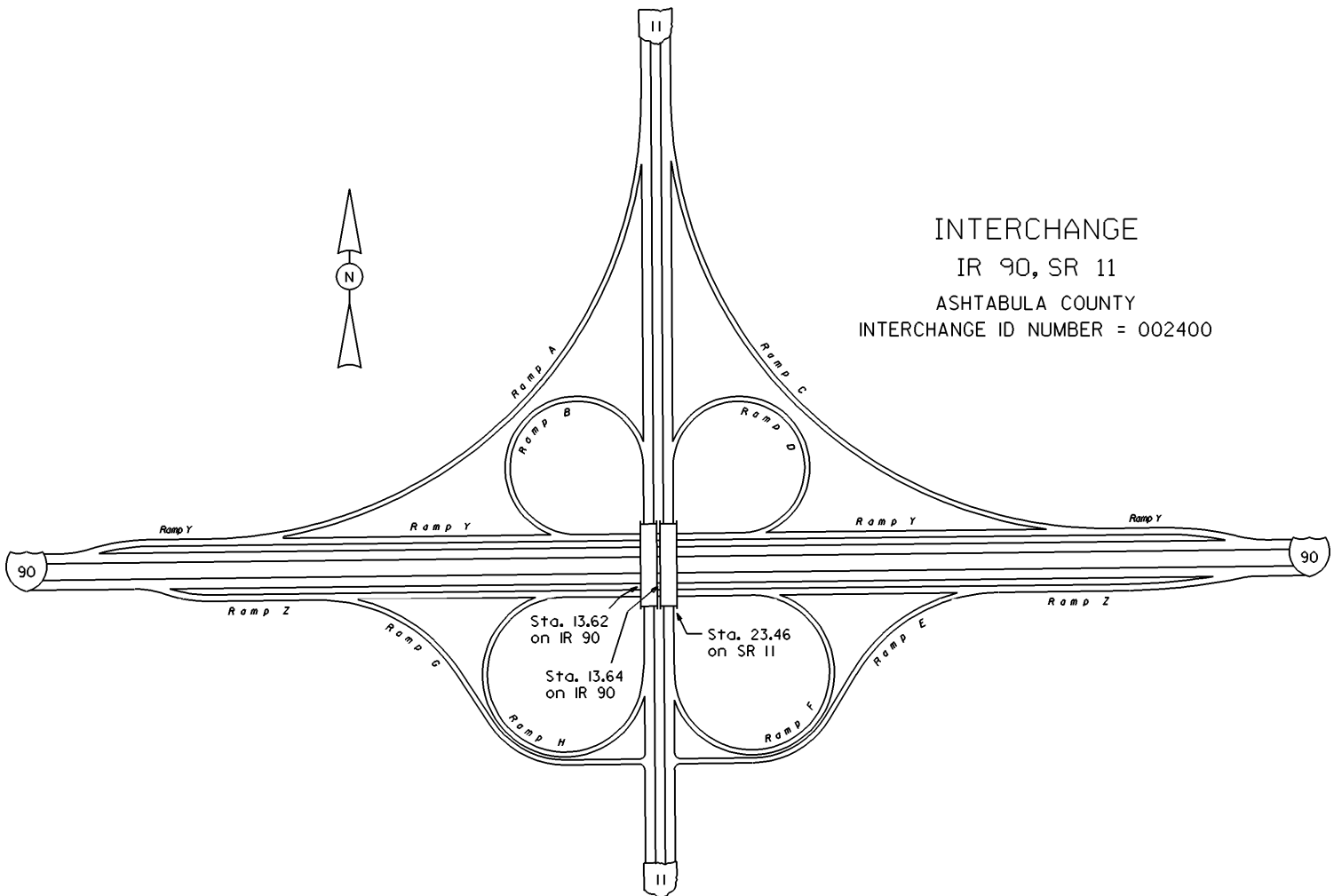
DISTRICT 4
 COUNTY ASHTABULA
 ROUTE IR 90

STATE LOG MILES	225.33	226	11	227	12	228	13	229	14	230	15
COUNTY LOG MILES	10.00										
VISIBLE FIXED POINTS DIRECTION OF SURVEY 											
STREET NAME											
SECTION IDENTIFICATION		7.56									
SECTION LENGTH		12.00									
SURFACE TYPE & WIDTH		G24'△G24'									
BASE TYPE & WIDTH		P24'△P24'									
YEAR		2005								2004	
PROJECT NUMBER		376								120	

PERPETUATION

VISIBLE	
FIXED	=====
POINTS	
STREET NAME	
SECTION IDENTIFICATION	
SECTION LENGTH	
SURFACE TYPE & WIDTH	
BASE TYPE & WIDTH	
YEAR	
PROJECT NUMBER	

VISIBLE	
FIXED	=====
POINTS	
STREET NAME	
SECTION IDENTIFICATION	
SECTION LENGTH	
SURFACE TYPE & WIDTH	
BASE TYPE & WIDTH	
YEAR	
PROJECT NUMBER	



INTERCHANGE
IR 90, SR 11
ASHTABULA COUNTY
INTERCHANGE ID NUMBER = 002400

IR 90 SHEET 3 OF 6
SR 11 SHEET 5 OF 6

REVISED Jan 2008

STATE OF OHIO - DEPARTMENT OF TRANSPORTATION

STATE ROUTE SECTIONS ON CONTINUOUS MILEAGE STATIONING

DISTRICT	4
COUNTY	ASHTABULA
ROUTE	1R 90

STATE LOG MILES	230.33	231	16	232	17	233	18	234	19	235	20		
COUNTY LOG MILES	15.00												
<p style="text-align: center; margin: 0;">VISIBLE FIXED POINTS</p> <p style="text-align: center; margin: 0; font-size: small;">DIRECTION OF SURVEY</p> <div style="text-align: center; margin: 5px 0;"> </div>													
STREET NAME													
SECTION IDENTIFICATION										7.56		19.56	
SECTION LENGTH										12.00		2.56	
SURFACE TYPE & WIDTH										G24'ΔG24'		G24'ΔG24'	
BASE TYPE & WIDTH										P24'ΔP24'		L24'ΔL24'	
YEAR										2004		2002	
PROJECT NUMBER										120		70	

PERPETUATION

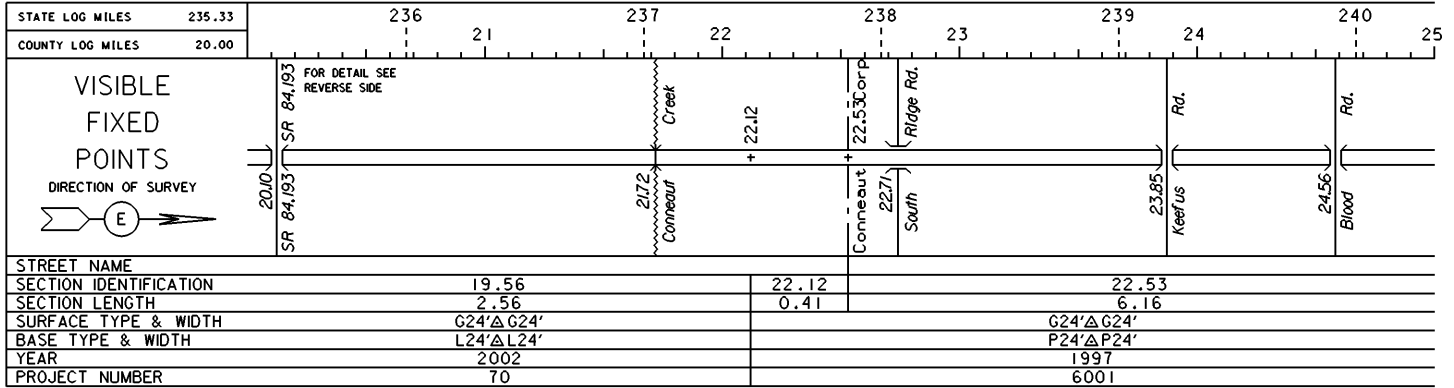
<p style="text-align: center; margin: 0;">VISIBLE FIXED POINTS</p>													
STREET NAME													
SECTION IDENTIFICATION										7.56		19.56	
SECTION LENGTH										12.00		2.56	
SURFACE TYPE & WIDTH										G24'ΔG24'		G24'ΔG24'	
BASE TYPE & WIDTH										L24'ΔL24'		L24'ΔL24'	
YEAR										2002		70	
PROJECT NUMBER										120		70	

<p style="text-align: center; margin: 0;">VISIBLE FIXED POINTS</p>													
STREET NAME													
SECTION IDENTIFICATION										7.56		19.56	
SECTION LENGTH										12.00		2.56	
SURFACE TYPE & WIDTH										G24'ΔG24'		G24'ΔG24'	
BASE TYPE & WIDTH										L24'ΔL24'		L24'ΔL24'	
YEAR										2002		70	
PROJECT NUMBER										120		70	

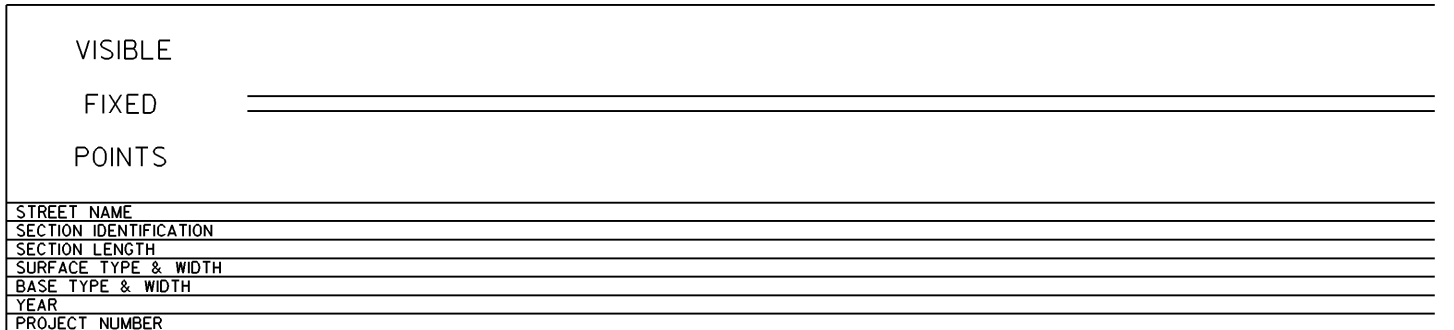
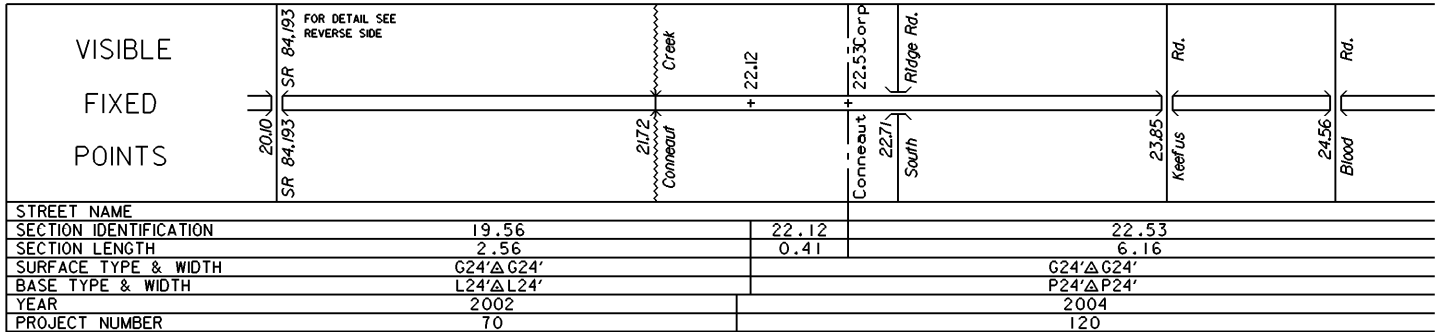
STATE OF OHIO - DEPARTMENT OF TRANSPORTATION

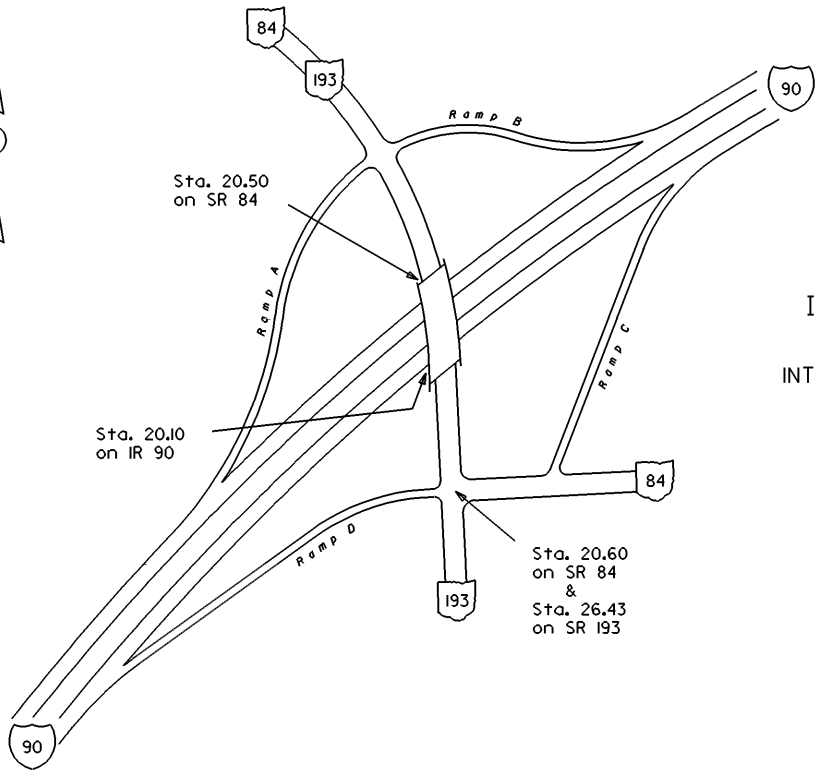
STATE ROUTE SECTIONS ON CONTINUOUS MILEAGE STATIONING

DISTRICT 4
 COUNTY ASHTABULA
 ROUTE IR 90



PERPETUATION



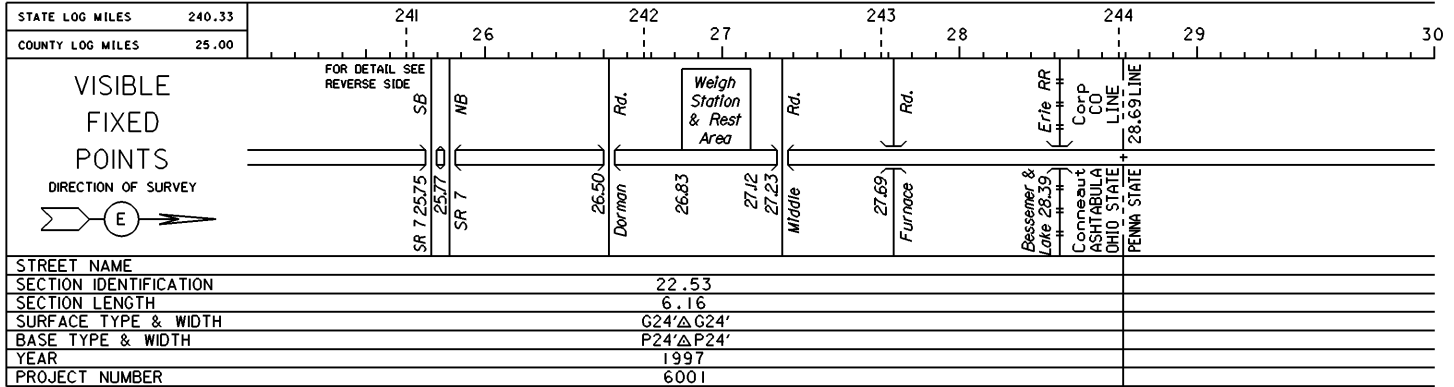


INTERCHANGE
IR 90 & SRs 84 & 193
ASHTABULA COUNTY
INTERCHANGE ID NUMBER = 002500

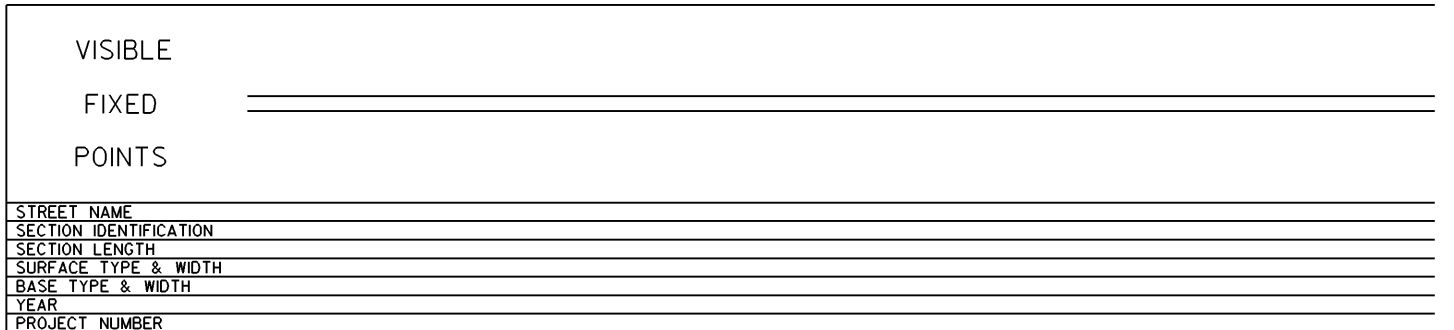
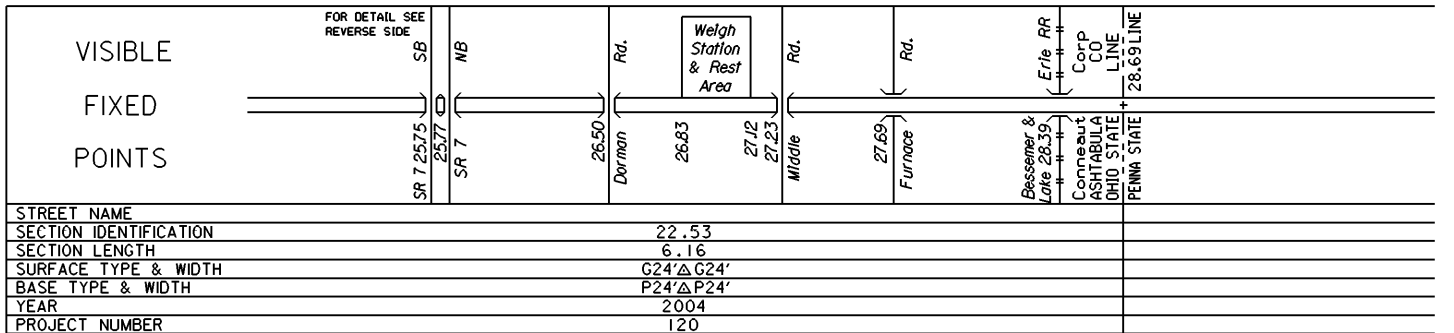
STATE OF OHIO - DEPARTMENT OF TRANSPORTATION

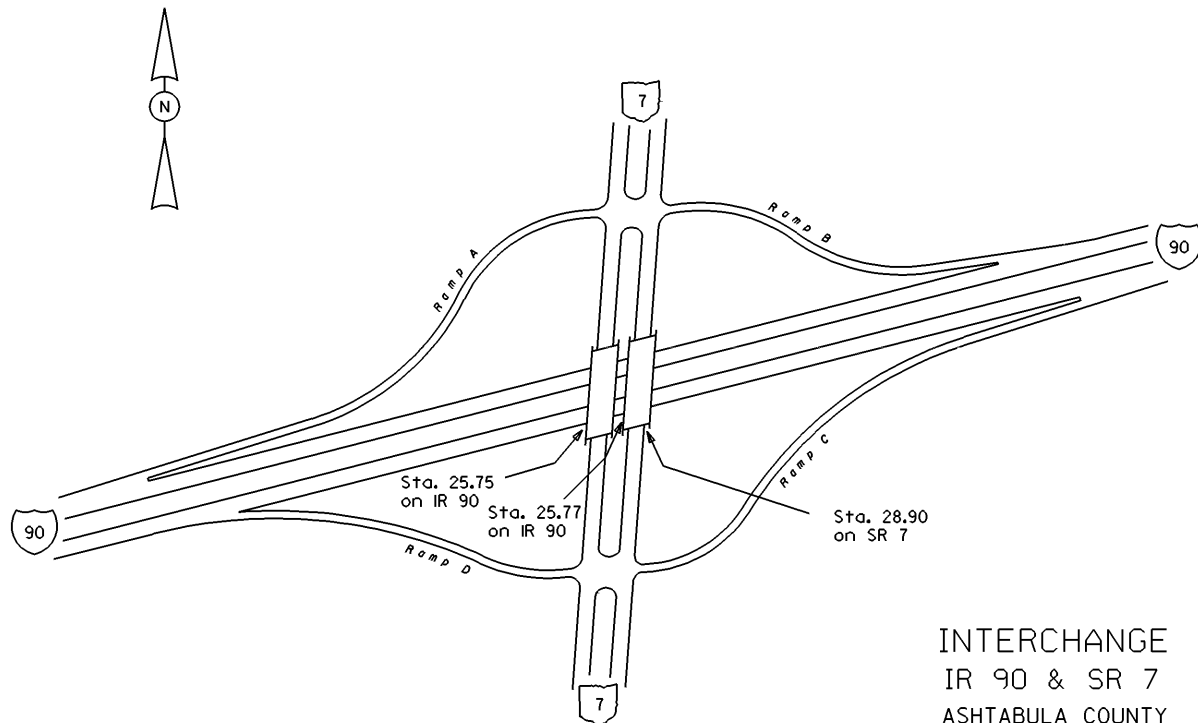
STATE ROUTE SECTIONS ON CONTINUOUS MILEAGE STATIONING

DISTRICT 4
 COUNTY ASHTABULA
 ROUTE IR 90



PERPETUATION





INTERCHANGE
IR 90 & SR 7
ASHTABULA COUNTY
INTERCHANGE ID NUMBER = 002600