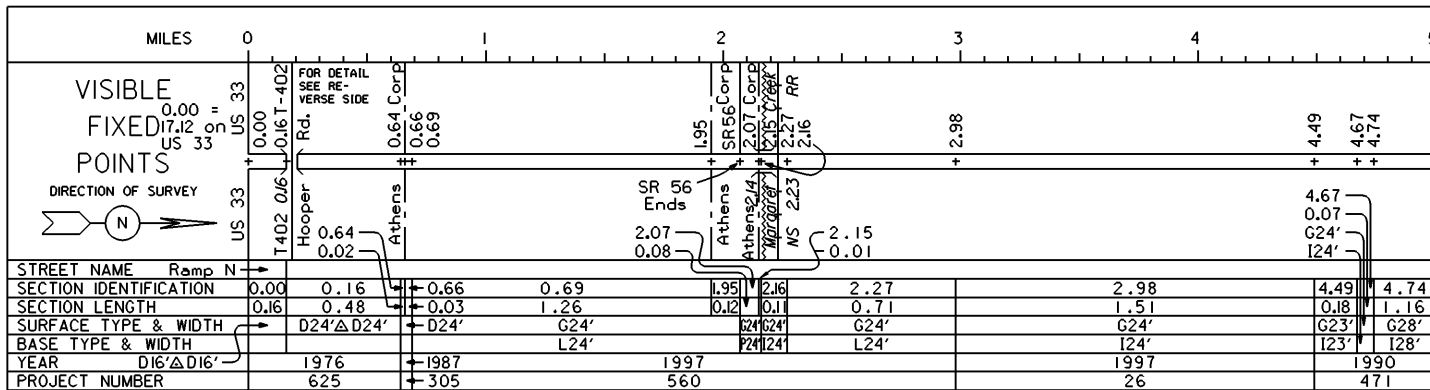


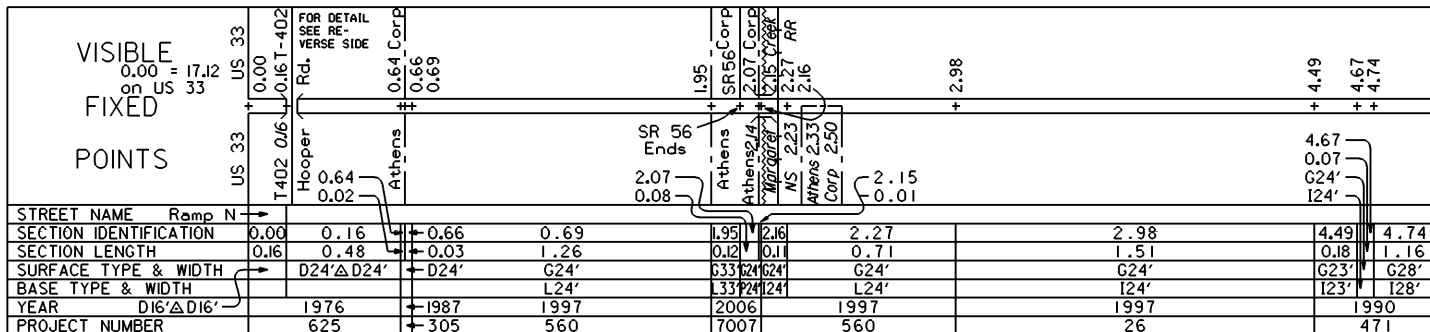
STATE OF OHIO - DEPARTMENT OF TRANSPORTATION

STATE ROUTE SECTIONS ON CONTINUOUS MILEAGE STATIONING

DISTRICT 10  
 COUNTY ATHENS  
 ROUTE SR 682

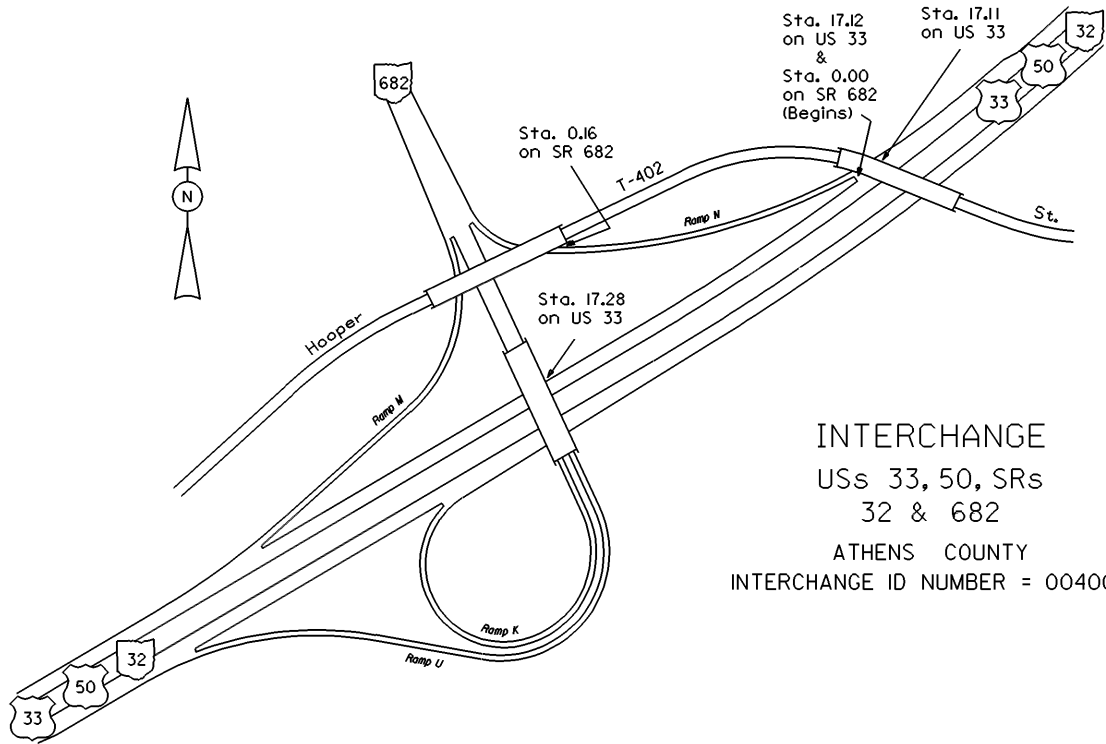


PERPETUATION



VISIBLE  
 FIXED  
 POINTS

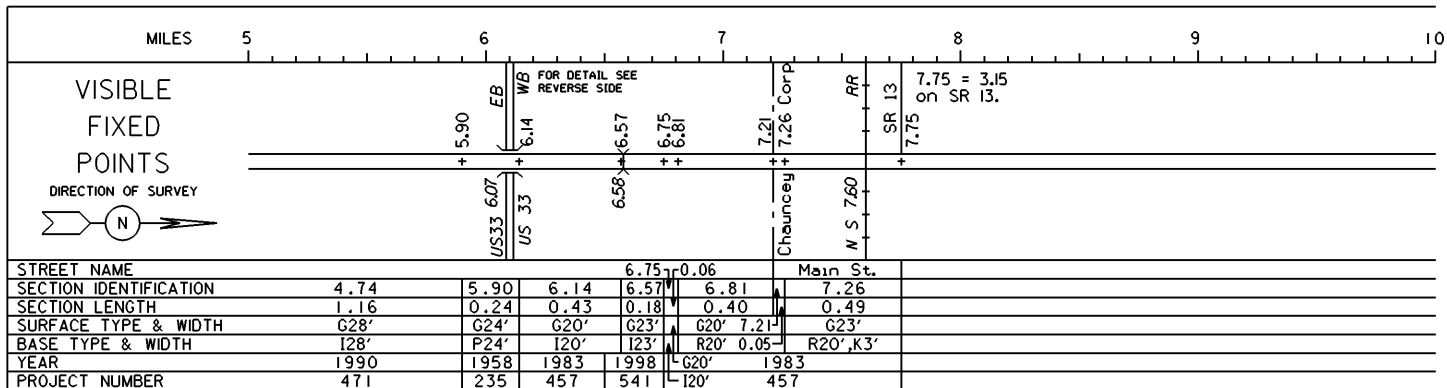
STREET NAME	
SECTION IDENTIFICATION	
SECTION LENGTH	
SURFACE TYPE & WIDTH	
BASE TYPE & WIDTH	
YEAR	
PROJECT NUMBER	



INTERCHANGE  
 USs 33, 50, SRs  
 32 & 682  
 ATHENS COUNTY  
 INTERCHANGE ID NUMBER = 004000

STATE OF OHIO - DEPARTMENT OF TRANSPORTATION  
STATE ROUTE SECTIONS ON CONTINUOUS MILEAGE STATIONING

DISTRICT 10  
COUNTY ATHENS  
ROUTE SR 682



PERPETUATION

VISIBLE  
FIXED  
POINTS

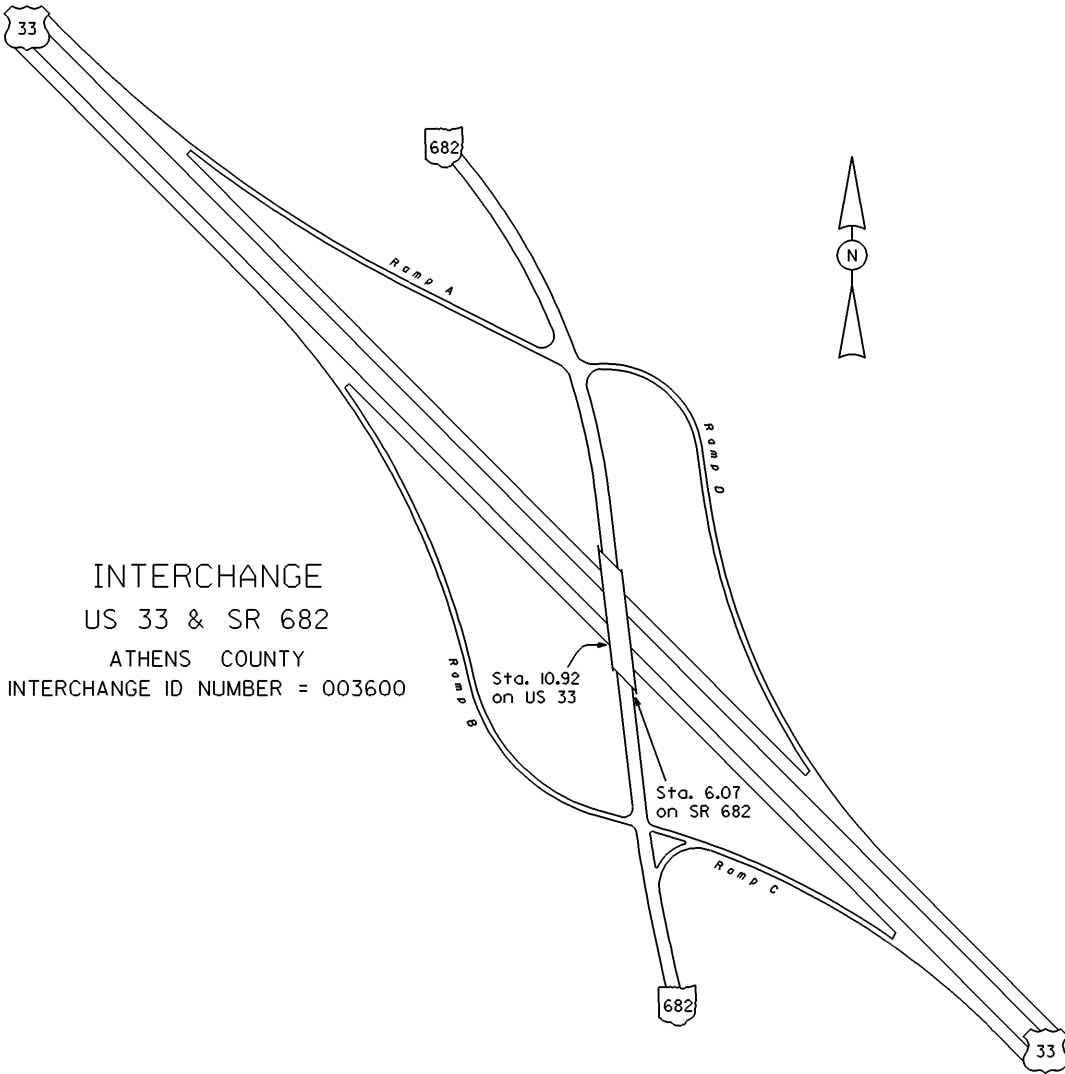
\_\_\_\_\_

STREET NAME
SECTION IDENTIFICATION
SECTION LENGTH
SURFACE TYPE & WIDTH
BASE TYPE & WIDTH
YEAR
PROJECT NUMBER

VISIBLE  
FIXED  
POINTS

\_\_\_\_\_

STREET NAME
SECTION IDENTIFICATION
SECTION LENGTH
SURFACE TYPE & WIDTH
BASE TYPE & WIDTH
YEAR
PROJECT NUMBER



INTERCHANGE  
US 33 & SR 682  
ATHENS COUNTY  
INTERCHANGE ID NUMBER = 003600