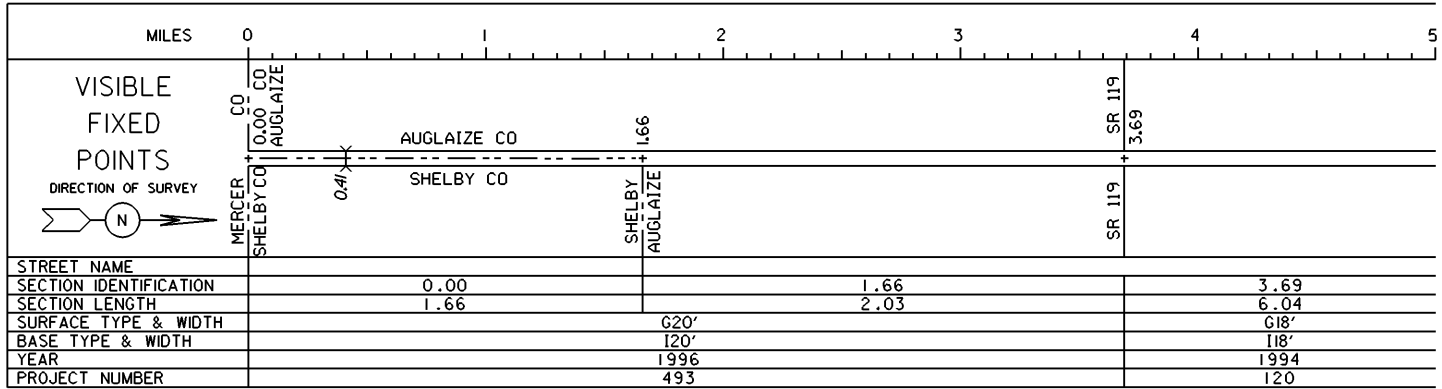


STATE OF OHIO - DEPARTMENT OF TRANSPORTATION

STATE ROUTE SECTIONS ON CONTINUOUS MILEAGE STATIONING

DISTRICT 7
 COUNTY AUGLAIZE
 ROUTE SR 364



PERPETUATION

VISIBLE
 FIXED
 POINTS

=====

STREET NAME
SECTION IDENTIFICATION
SECTION LENGTH
SURFACE TYPE & WIDTH
BASE TYPE & WIDTH
YEAR
PROJECT NUMBER

VISIBLE
 FIXED
 POINTS

=====

STREET NAME
SECTION IDENTIFICATION
SECTION LENGTH
SURFACE TYPE & WIDTH
BASE TYPE & WIDTH
YEAR
PROJECT NUMBER

STATE OF OHIO - DEPARTMENT OF TRANSPORTATION
STATE ROUTE SECTIONS ON CONTINUOUS MILEAGE STATIONING

DISTRICT 7
COUNTY AUGLAIZE
ROUTE SR 364

MILES	5	6	7	8	9	10
VISIBLE FIXED POINTS						SR 219 9.73
DIRECTION OF SURVEY						SR 219
	SR 274					SR 219
	571 SR 274					SR 219
STREET NAME						
SECTION IDENTIFICATION	3.69					9.73
SECTION LENGTH	6.04					2.17
SURFACE TYPE & WIDTH	G18'					G20'
BASE TYPE & WIDTH	I18'					I20'
YEAR	1994		1995		1994	
PROJECT NUMBER	120		M&R		120	

PERPETUATION

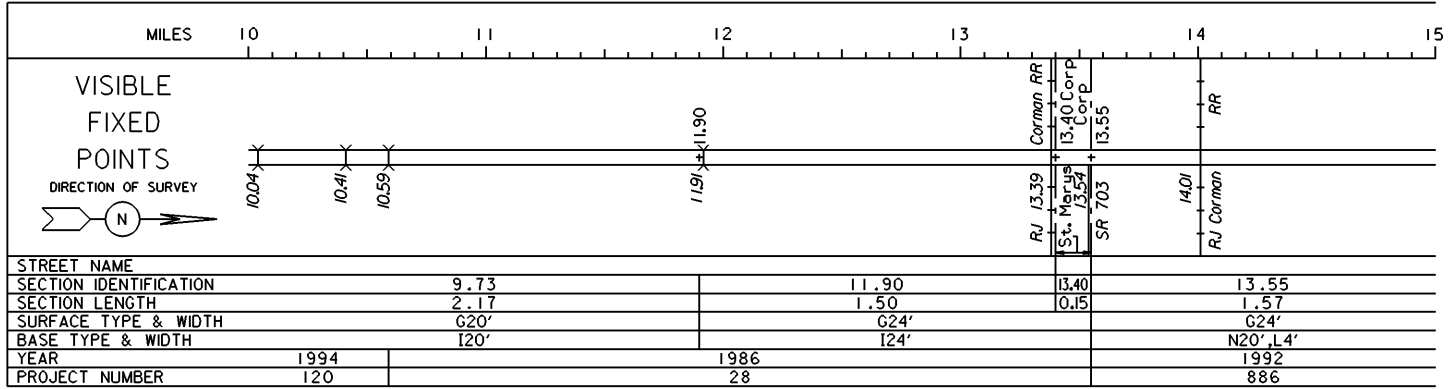
VISIBLE FIXED POINTS						SR 219 9.73
STREET NAME						
SECTION IDENTIFICATION						9.73
SECTION LENGTH						2.17
SURFACE TYPE & WIDTH						G20'
BASE TYPE & WIDTH						I20'
YEAR						2007
PROJECT NUMBER						336

VISIBLE FIXED POINTS						
STREET NAME						
SECTION IDENTIFICATION						
SECTION LENGTH						
SURFACE TYPE & WIDTH						
BASE TYPE & WIDTH						
YEAR						
PROJECT NUMBER						

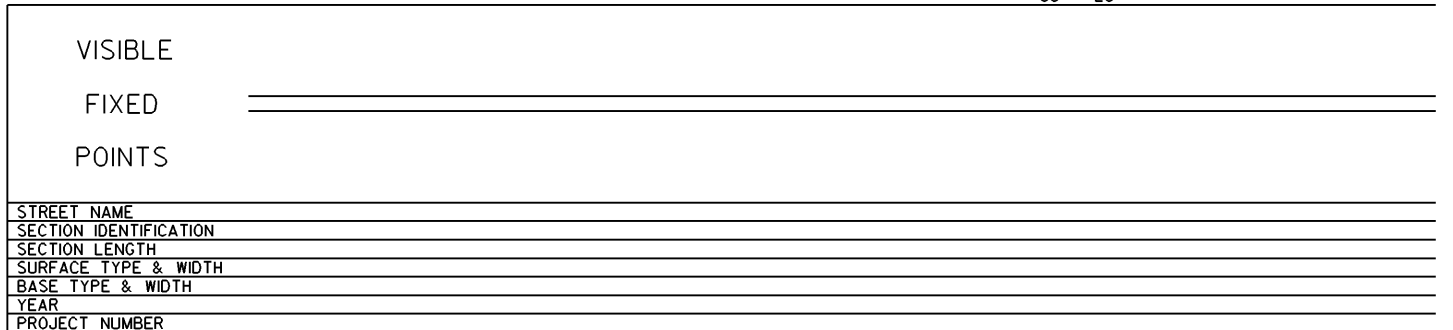
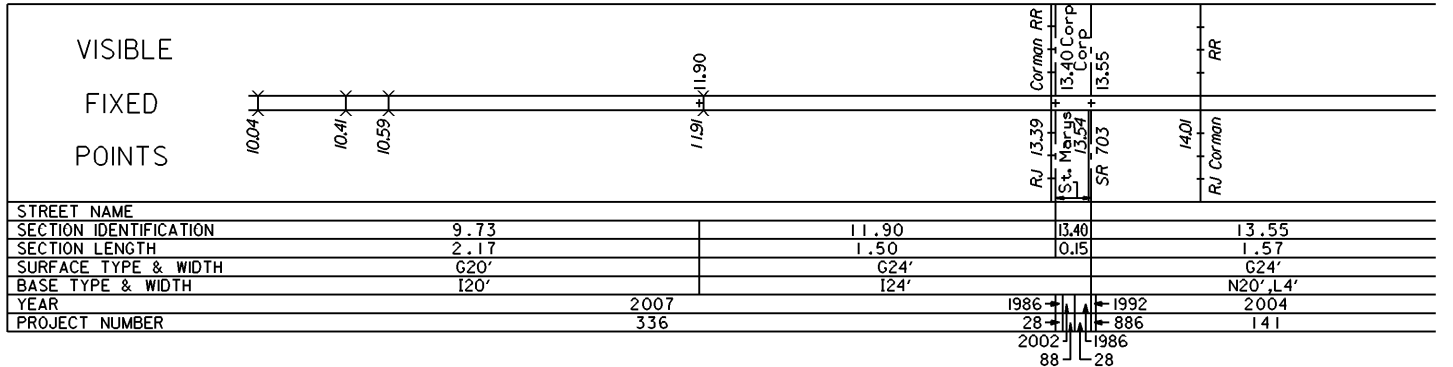
STATE OF OHIO - DEPARTMENT OF TRANSPORTATION

STATE ROUTE SECTIONS ON CONTINUOUS MILEAGE STATIONING

DISTRICT	7
COUNTY	AUGLAIZE
ROUTE	SR 364



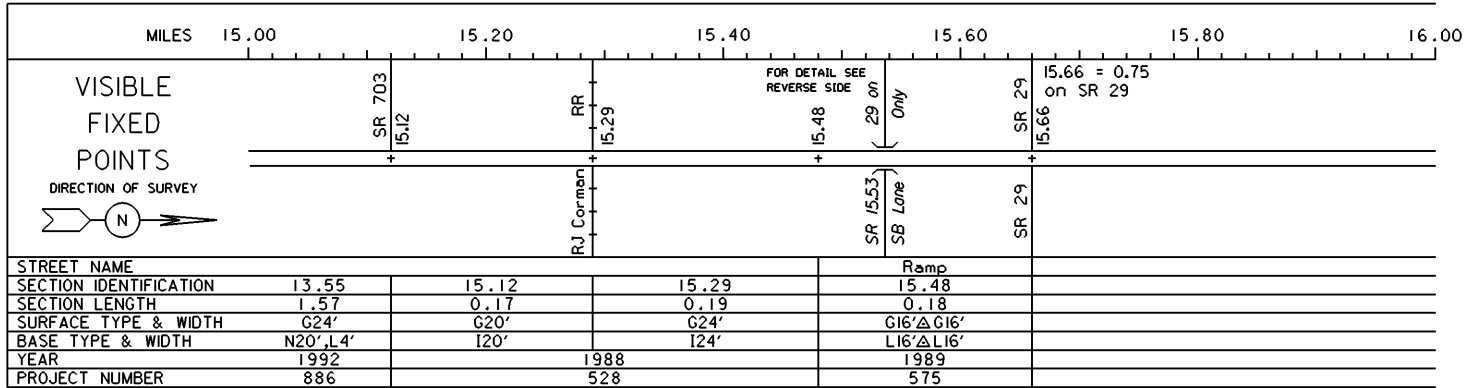
PERPETUATION



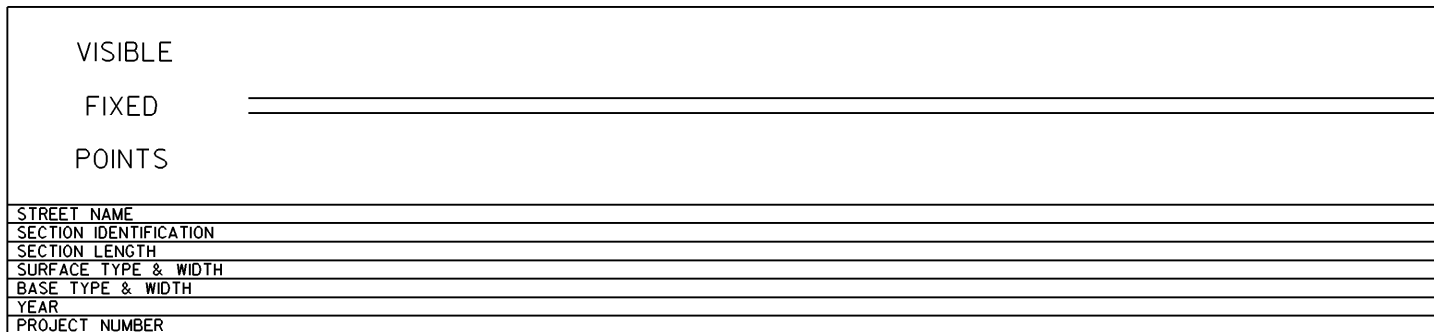
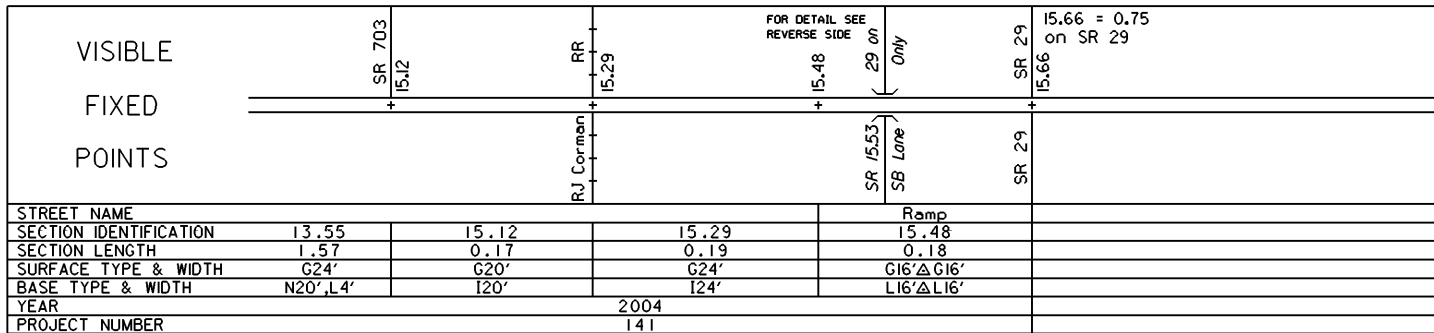
STATE OF OHIO - DEPARTMENT OF TRANSPORTATION

STATE ROUTE SECTIONS ON CONTINUOUS MILEAGE STATIONING

DISTRICT	7
COUNTY	AUGLAIZE
ROUTE	SR 364



PERPETUATION



INTERCHANGE
SR 29 & SR 364
AUGLAIZE COUNTY
INTERCHANGE ID NUMBER = 005500

