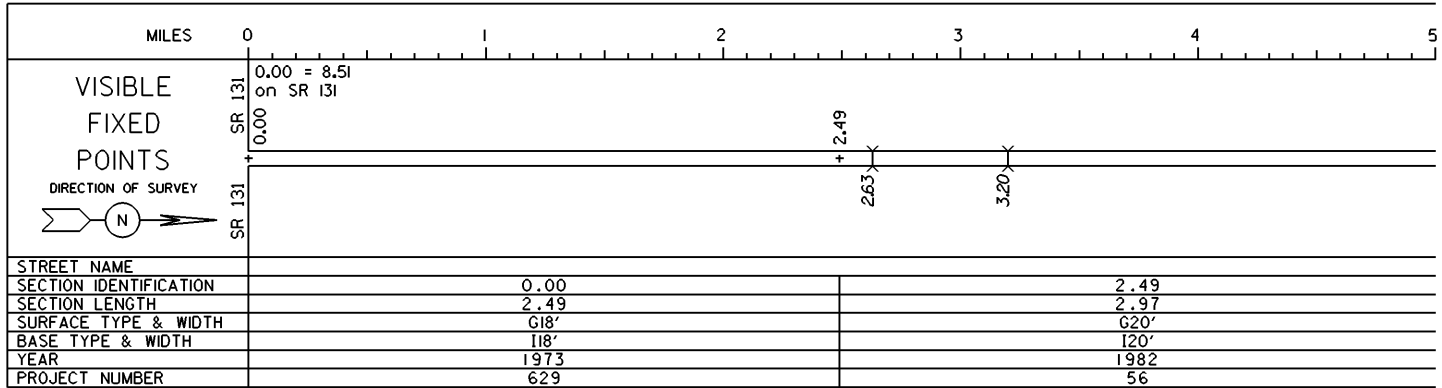


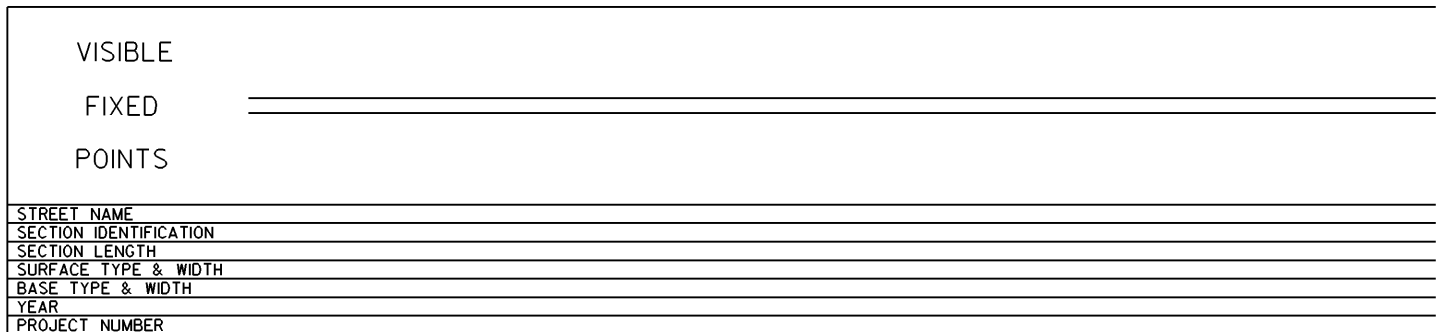
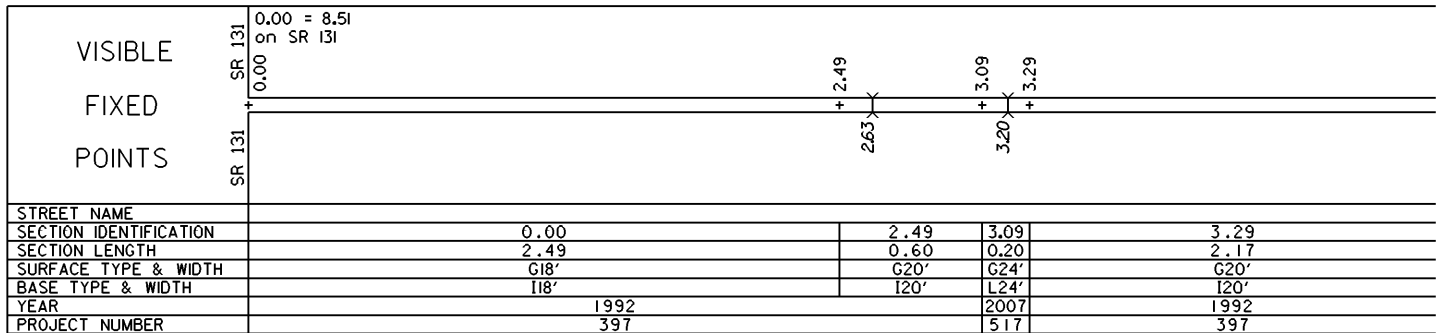
STATE OF OHIO - DEPARTMENT OF TRANSPORTATION

STATE ROUTE SECTIONS ON CONTINUOUS MILEAGE STATIONING

DISTRICT	8
COUNTY	CLERMONT
ROUTE	SR 727

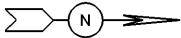


PERPETUATION



STATE OF OHIO - DEPARTMENT OF TRANSPORTATION
 STATE ROUTE SECTIONS ON CONTINUOUS MILEAGE STATIONING

DISTRICT 8
 COUNTY CLERMONT
 ROUTE SR 727

	MILES	5.00	5.20	5.40	5.60	5.80	6.00
VISIBLE FIXED POINTS DIRECTION OF SURVEY 				5.46 + SR 133	5.46 = 34.57 on SR 133		
STREET NAME							
SECTION IDENTIFICATION		2.49					
SECTION LENGTH		2.97					
SURFACE TYPE & WIDTH		G20'					
BASE TYPE & WIDTH		120'					
YEAR		1982					
PROJECT NUMBER		56					

PERPETUATION

VISIBLE FIXED POINTS				5.46 + SR 133	5.46 = 34.57 on SR 133		
STREET NAME							
SECTION IDENTIFICATION		3.29					
SECTION LENGTH		2.17					
SURFACE TYPE & WIDTH		G20'					
BASE TYPE & WIDTH		120'					
YEAR		1992					
PROJECT NUMBER		397					

VISIBLE FIXED POINTS							
STREET NAME							
SECTION IDENTIFICATION							
SECTION LENGTH							
SURFACE TYPE & WIDTH							
BASE TYPE & WIDTH							
YEAR							
PROJECT NUMBER							