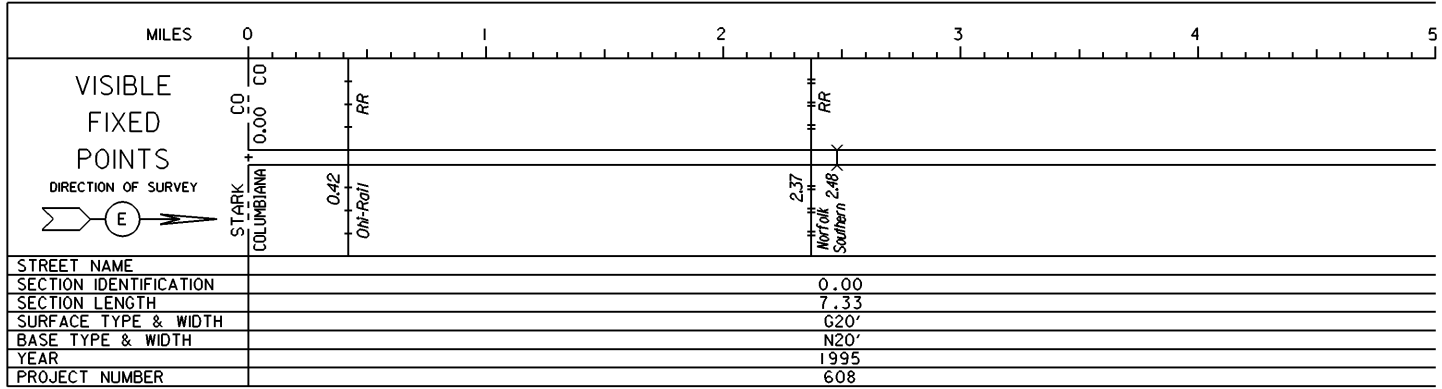


STATE OF OHIO - DEPARTMENT OF TRANSPORTATION

STATE ROUTE SECTIONS ON CONTINUOUS MILEAGE STATIONING

DISTRICT 11
 COUNTY COLUMBIANA
 ROUTE US 30



PERPETUATION

VISIBLE
 FIXED
 POINTS

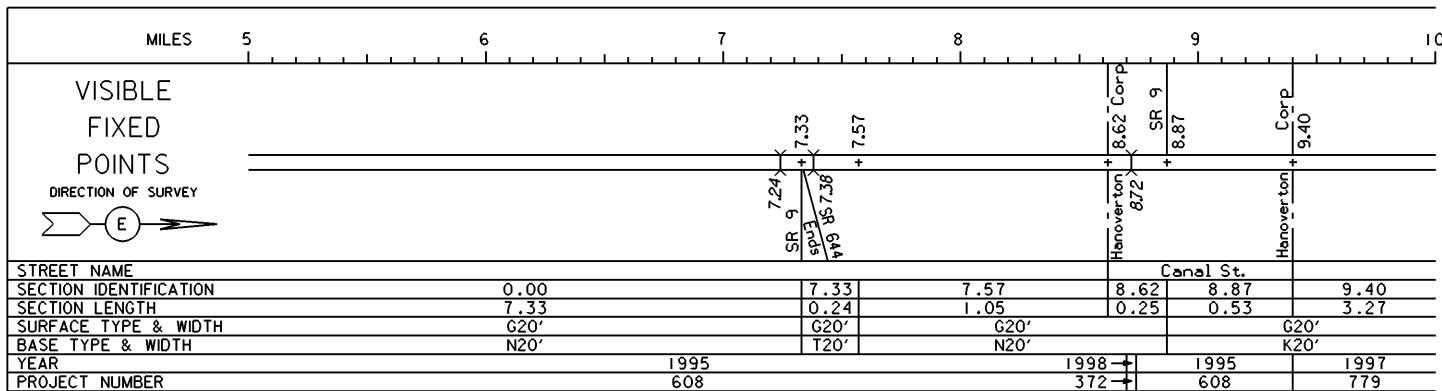
STREET NAME
 SECTION IDENTIFICATION
 SECTION LENGTH
 SURFACE TYPE & WIDTH
 BASE TYPE & WIDTH
 YEAR
 PROJECT NUMBER

VISIBLE
 FIXED
 POINTS

STREET NAME
 SECTION IDENTIFICATION
 SECTION LENGTH
 SURFACE TYPE & WIDTH
 BASE TYPE & WIDTH
 YEAR
 PROJECT NUMBER

STATE OF OHIO - DEPARTMENT OF TRANSPORTATION
STATE ROUTE SECTIONS ON CONTINUOUS MILEAGE STATIONING

DISTRICT 11
COUNTY COLUMBIANA
ROUTE US 30



PERPETUATION

VISIBLE
FIXED
POINTS

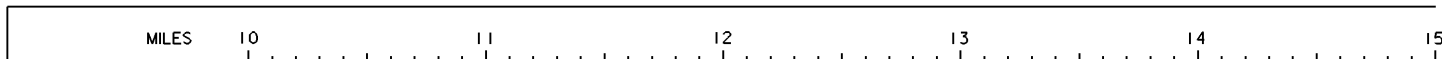
STREET NAME
SECTION IDENTIFICATION
SECTION LENGTH
SURFACE TYPE & WIDTH
BASE TYPE & WIDTH
YEAR
PROJECT NUMBER

VISIBLE
FIXED
POINTS

STREET NAME
SECTION IDENTIFICATION
SECTION LENGTH
SURFACE TYPE & WIDTH
BASE TYPE & WIDTH
YEAR
PROJECT NUMBER

STATE OF OHIO - DEPARTMENT OF TRANSPORTATION
STATE ROUTE SECTIONS ON CONTINUOUS MILEAGE STATIONING

DISTRICT 11
COUNTY COLUMBIANA
ROUTE US 30



VISIBLE
FIXED
POINTS

DIRECTION OF SURVEY



+ 12.67

+ 14.16

STREET NAME			
SECTION IDENTIFICATION	9.40	12.67	14.16
SECTION LENGTH	3.27	1.49	3.46
SURFACE TYPE & WIDTH	G20'	G24'	G18'
BASE TYPE & WIDTH	K20'	L24'	R18'
YEAR		1997	
PROJECT NUMBER		779	

PERPETUATION

VISIBLE
FIXED
POINTS

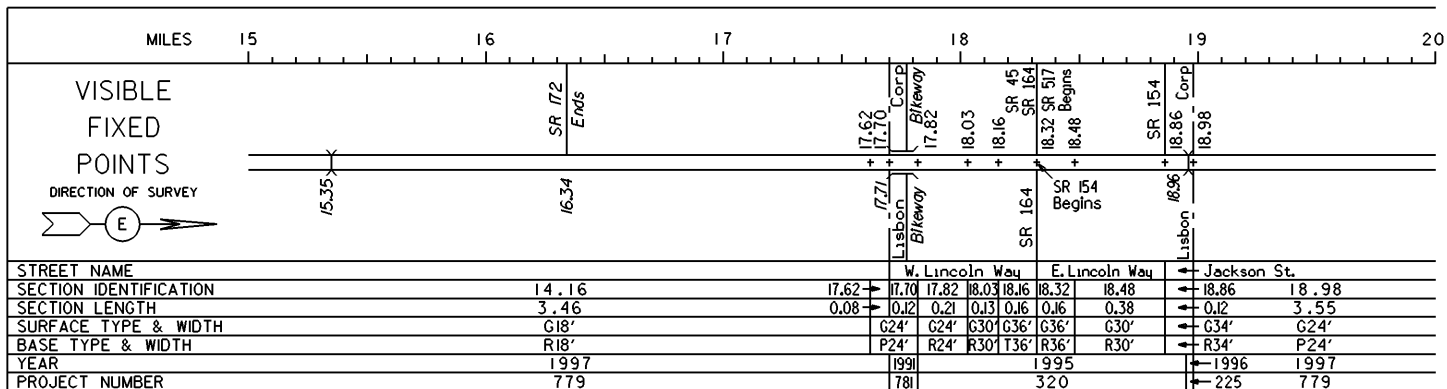
STREET NAME	
SECTION IDENTIFICATION	
SECTION LENGTH	
SURFACE TYPE & WIDTH	
BASE TYPE & WIDTH	
YEAR	
PROJECT NUMBER	

VISIBLE
FIXED
POINTS

STREET NAME	
SECTION IDENTIFICATION	
SECTION LENGTH	
SURFACE TYPE & WIDTH	
BASE TYPE & WIDTH	
YEAR	
PROJECT NUMBER	

STATE OF OHIO - DEPARTMENT OF TRANSPORTATION
STATE ROUTE SECTIONS ON CONTINUOUS MILEAGE STATIONING

DISTRICT 11
COUNTY COLUMBIANA
ROUTE US 30



PERPETUATION

VISIBLE

FIXED

POINTS

STREET NAME	
SECTION IDENTIFICATION	
SECTION LENGTH	
SURFACE TYPE & WIDTH	
BASE TYPE & WIDTH	
YEAR	
PROJECT NUMBER	

VISIBLE

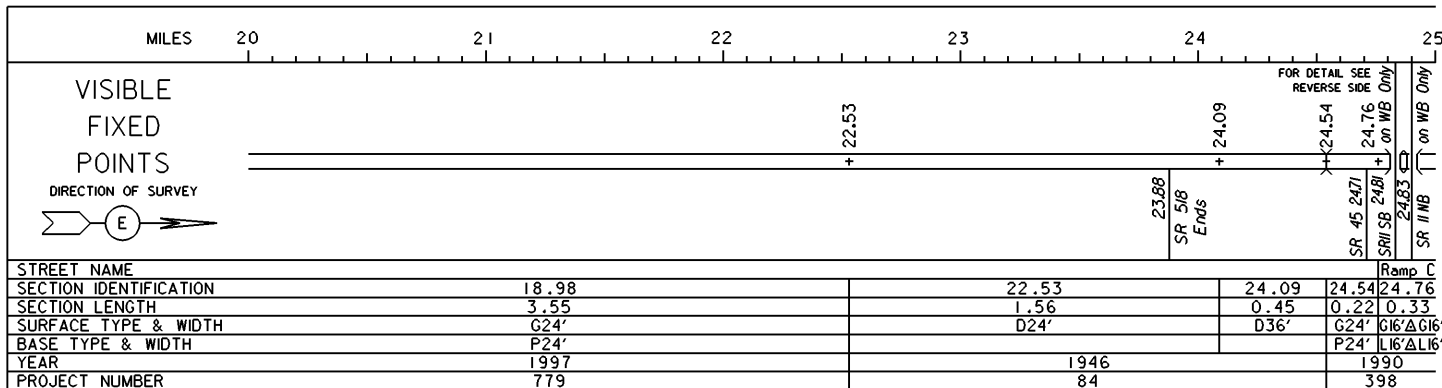
FIXED

POINTS

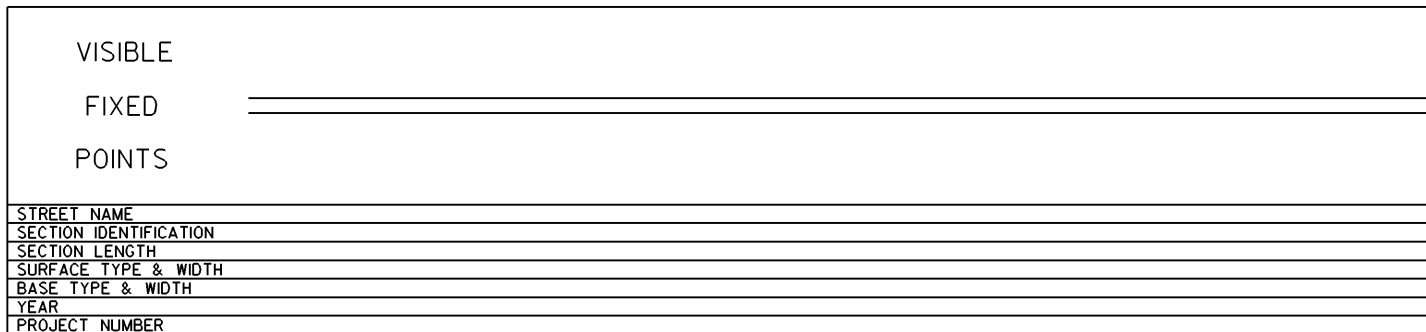
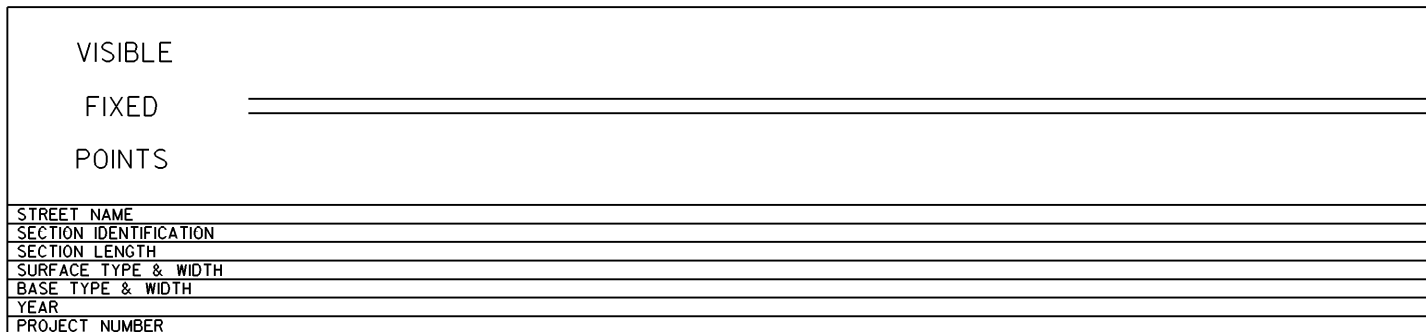
STREET NAME	
SECTION IDENTIFICATION	
SECTION LENGTH	
SURFACE TYPE & WIDTH	
BASE TYPE & WIDTH	
YEAR	
PROJECT NUMBER	

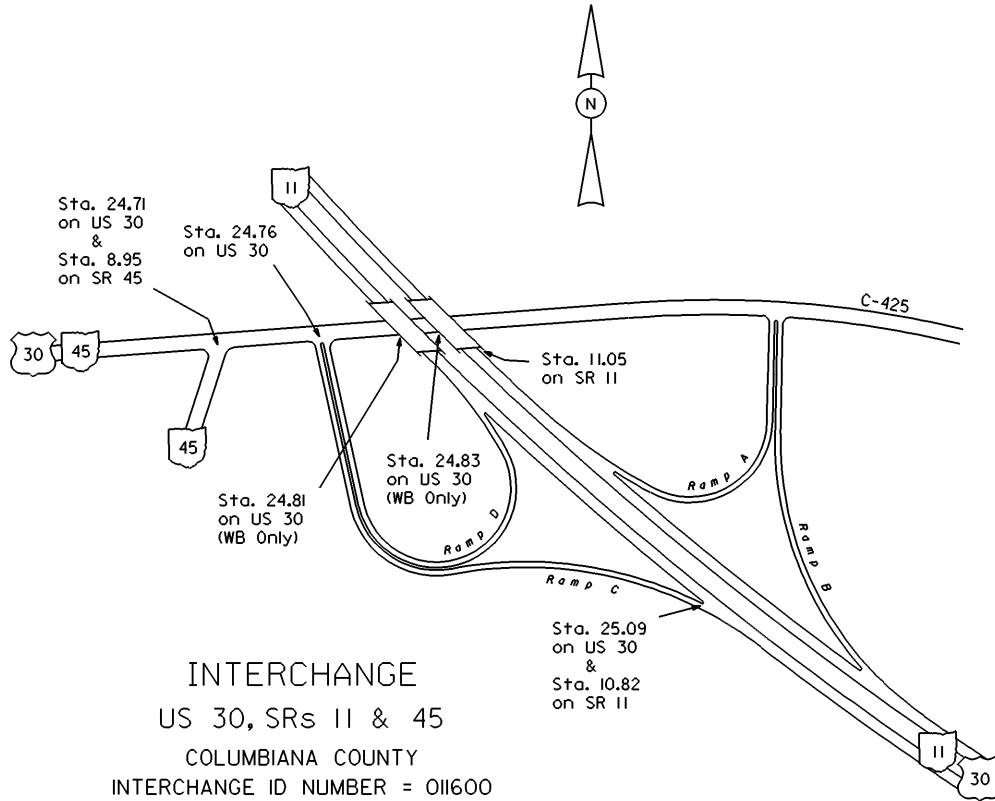
STATE OF OHIO - DEPARTMENT OF TRANSPORTATION
STATE ROUTE SECTIONS ON CONTINUOUS MILEAGE STATIONING

DISTRICT 11
COUNTY COLUMBIANA
ROUTE US 30



PERPETUATION



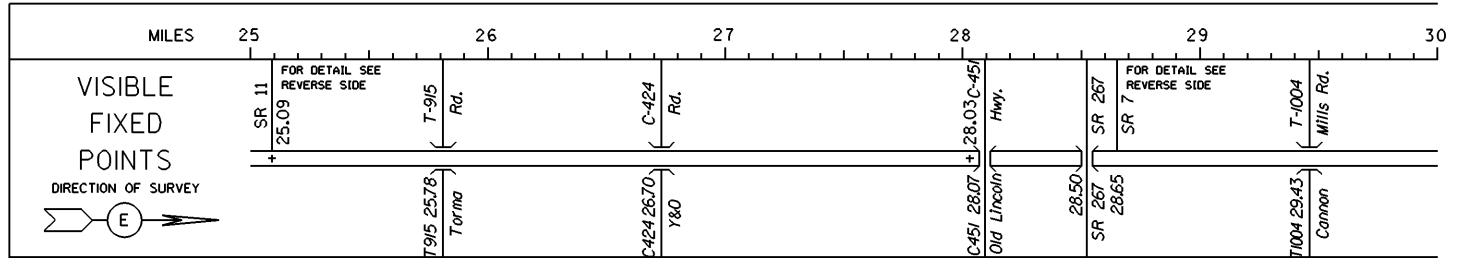


US 30 SHEET 5 OF 8
 US 30 SHEET 6 OF 8
 SR 11 SHEET 3 OF 6

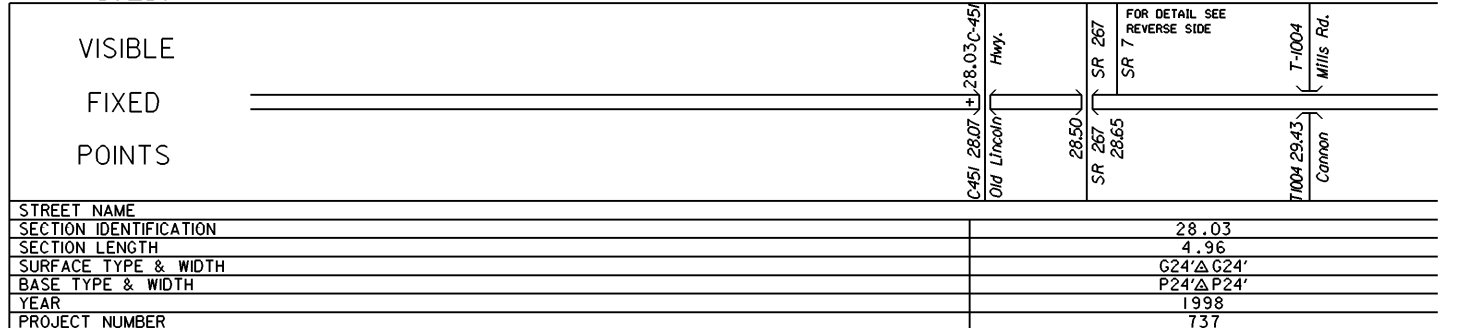
STATE OF OHIO - DEPARTMENT OF TRANSPORTATION

STATE ROUTE SECTIONS ON CONTINUOUS MILEAGE STATIONING

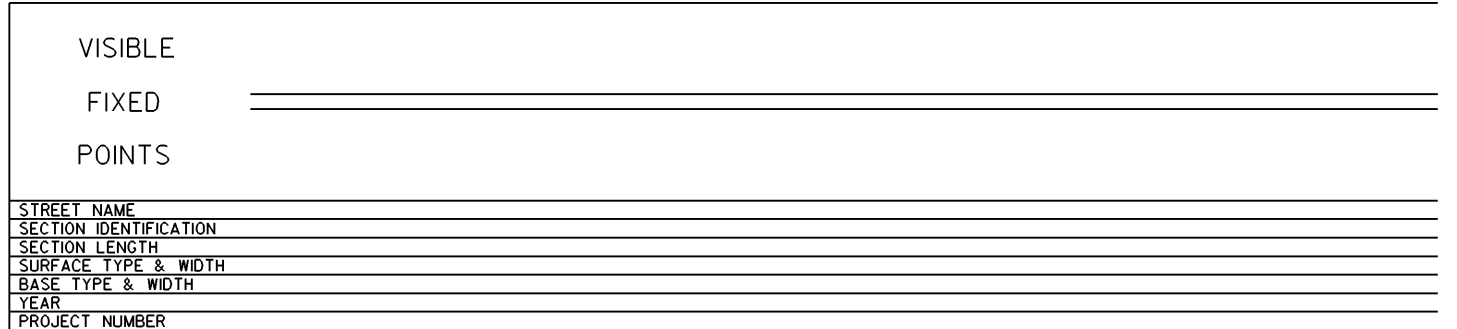
DISTRICT 11
 COUNTY COLUMBIANA
 ROUTE US 30

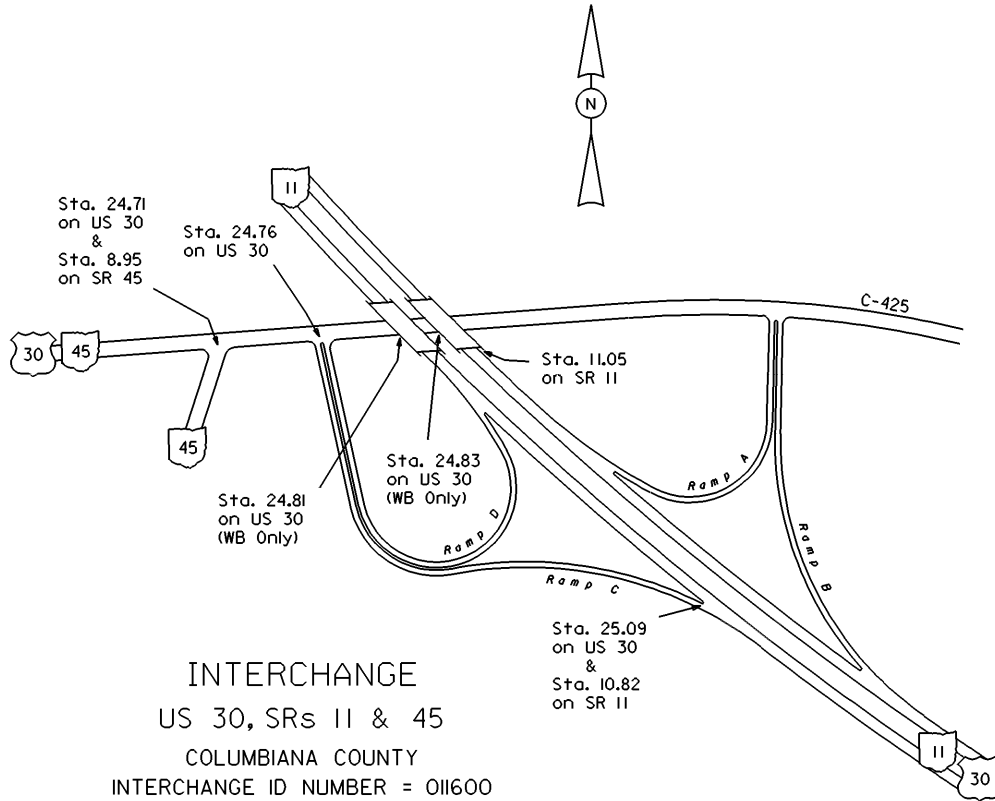


STREET NAME		
SECTION IDENTIFICATION	24.76	28.03
SECTION LENGTH	0.33	
SURFACE TYPE & WIDTH	G24' Δ G24'	G24' Δ G24'
BASE TYPE & WIDTH	L24' Δ L24'	P24' Δ P24'
YEAR	1990	1998
PROJECT NUMBER	398	737
	C16' Δ C16' L16' Δ L16'	
	114	
	PERPETUATION	

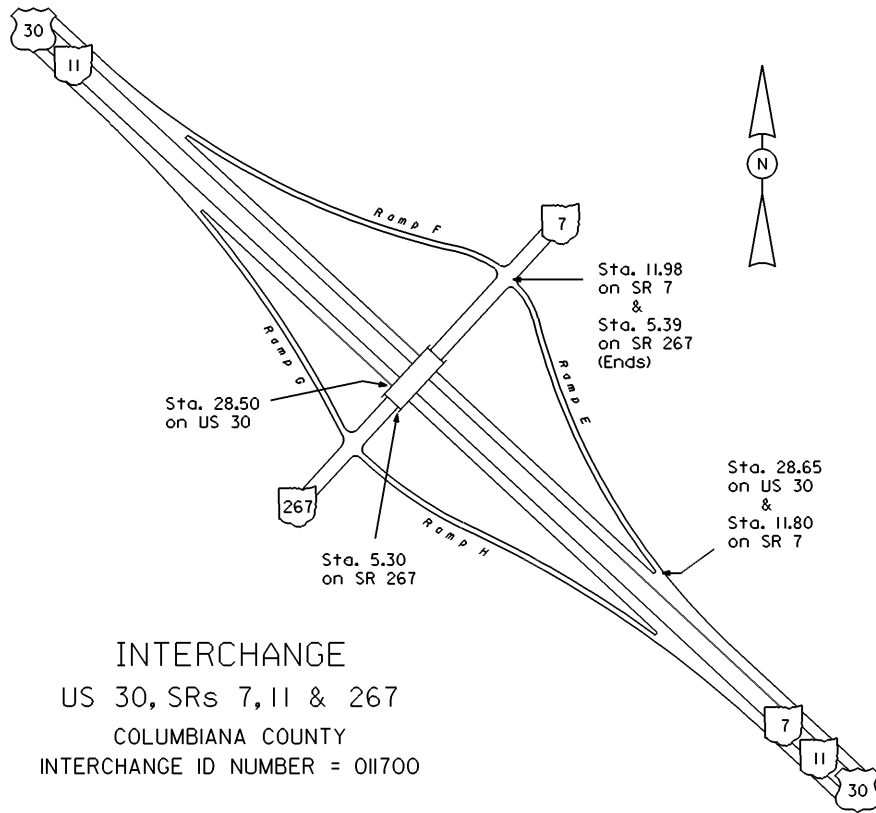


SECTION IDENTIFICATION		28.03
SECTION LENGTH		4.96
SURFACE TYPE & WIDTH		G24' Δ G24'
BASE TYPE & WIDTH		P24' Δ P24'
YEAR		1998
PROJECT NUMBER		737





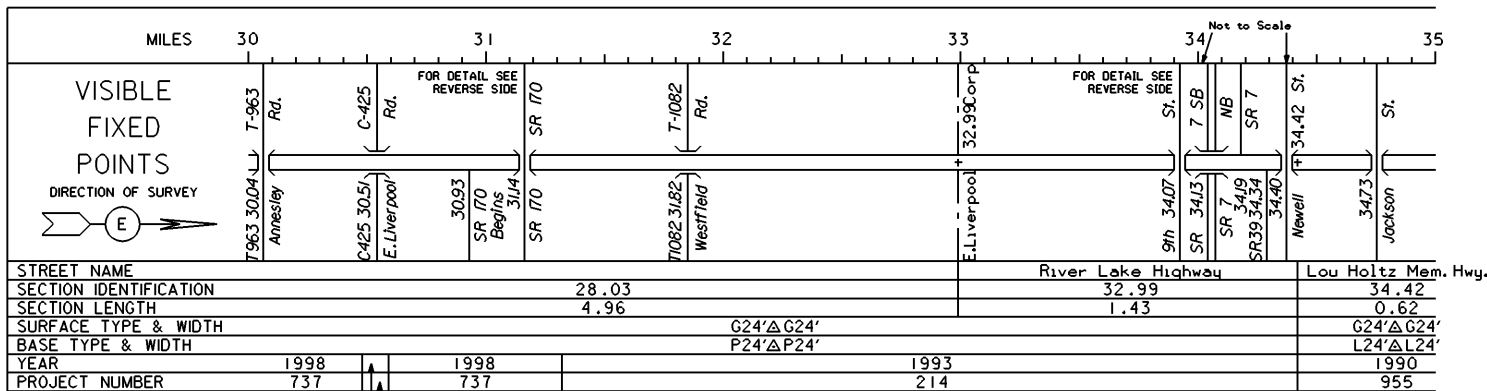
US 30 SHEET 5 OF 8
 US 30 SHEET 6 OF 8
 SR 11 SHEET 3 OF 6



INTERCHANGE
 US 30, SRs 7, 11 & 267
 COLUMBIANA COUNTY
 INTERCHANGE ID NUMBER = 011700

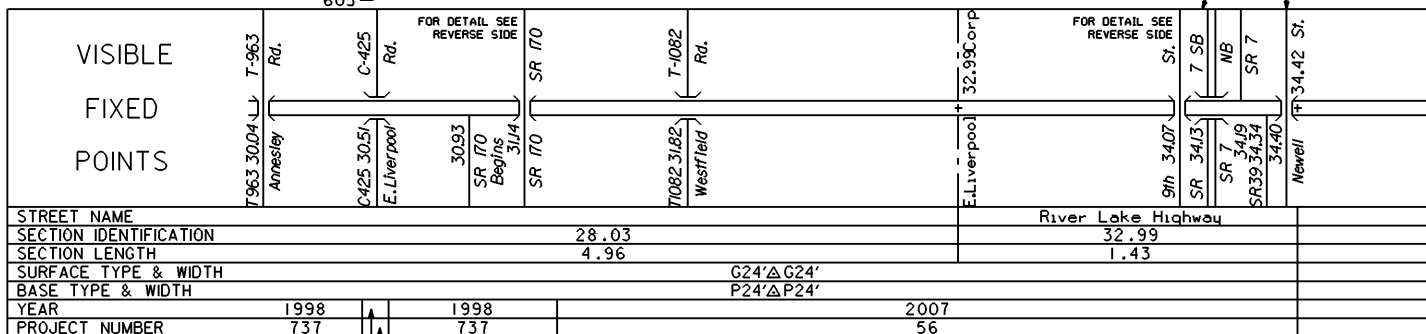
STATE OF OHIO - DEPARTMENT OF TRANSPORTATION
STATE ROUTE SECTIONS ON CONTINUOUS MILEAGE STATIONING

DISTRICT 11
COUNTY COLUMBIANA
ROUTE US 30

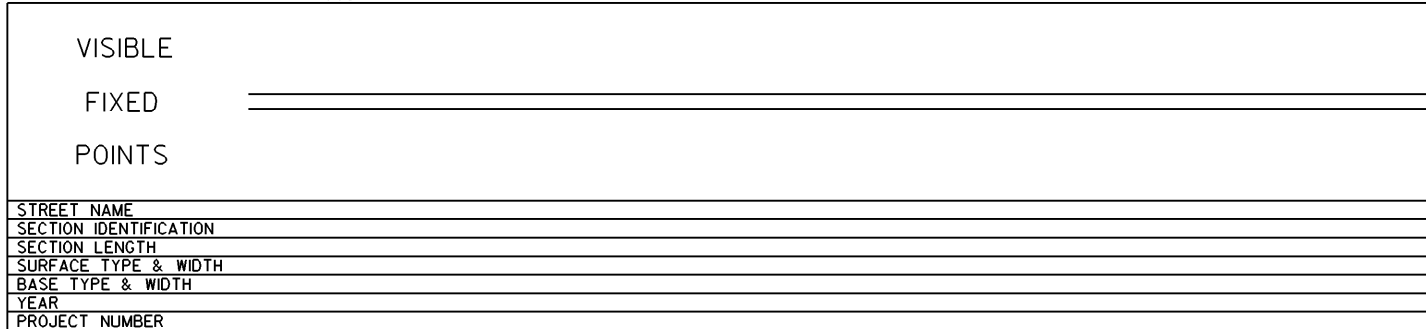


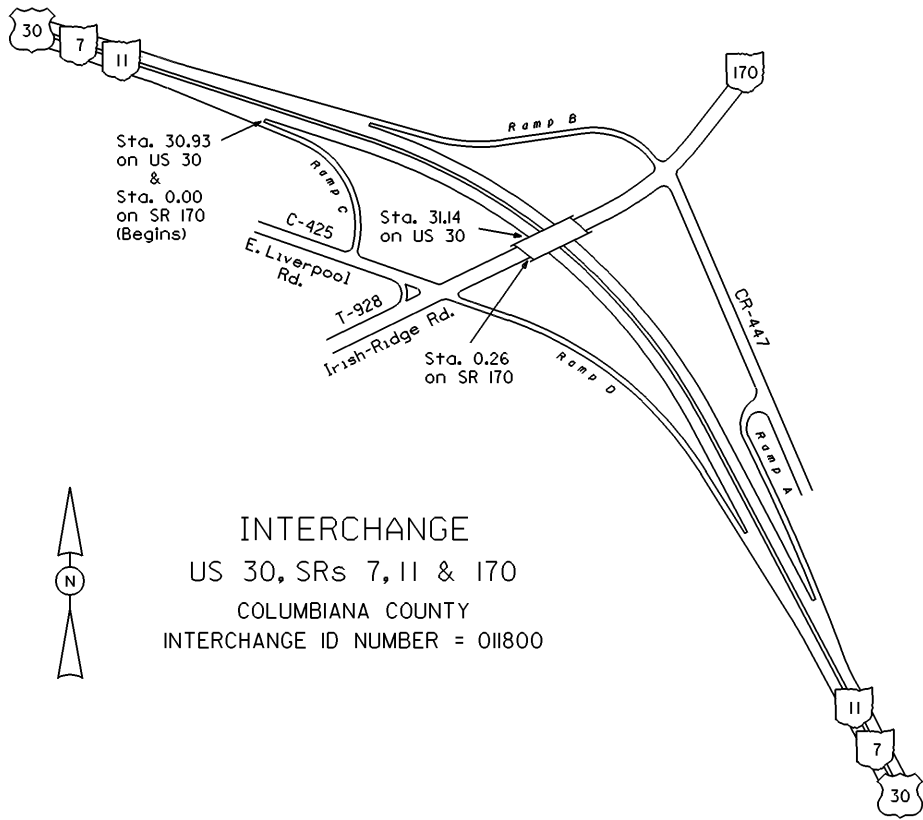
2005
605

PERPETUATION



2005
605

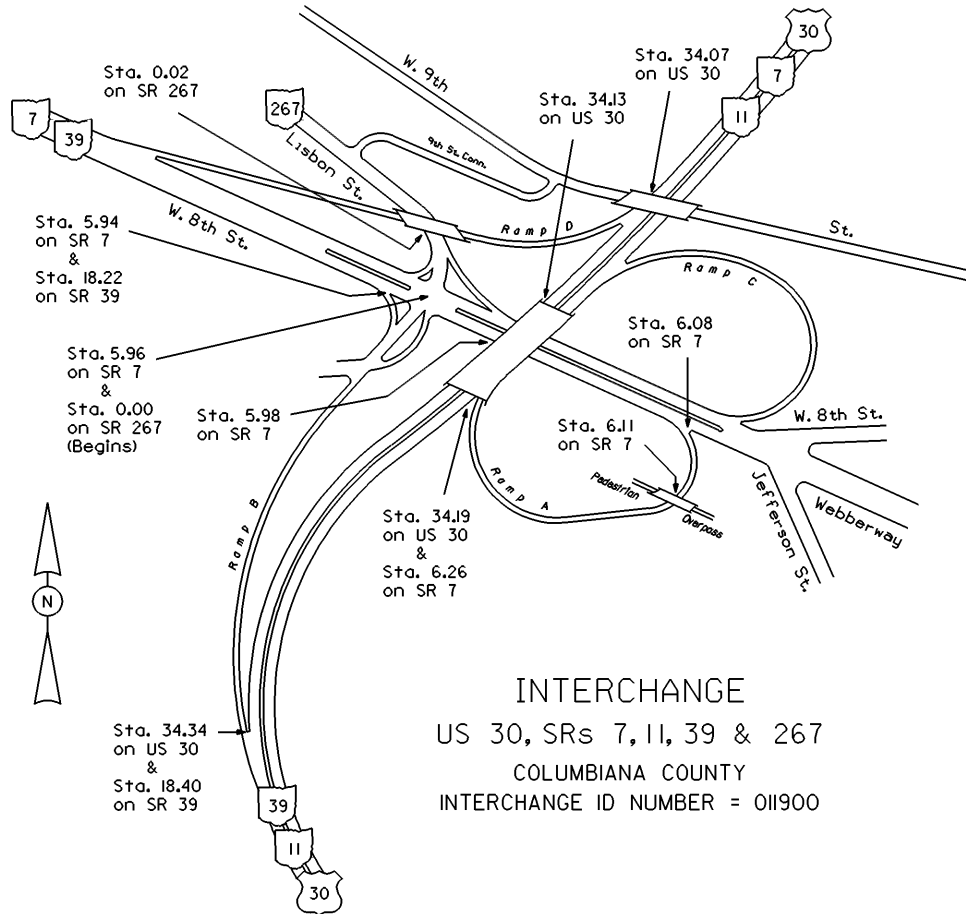




INTERCHANGE
 US 30, SRs 7, 11 & 170
 COLUMBIANA COUNTY
 INTERCHANGE ID NUMBER = 011800

US 30 SHEET 7 OF 8
 SR 170 SHEET 1 OF 5

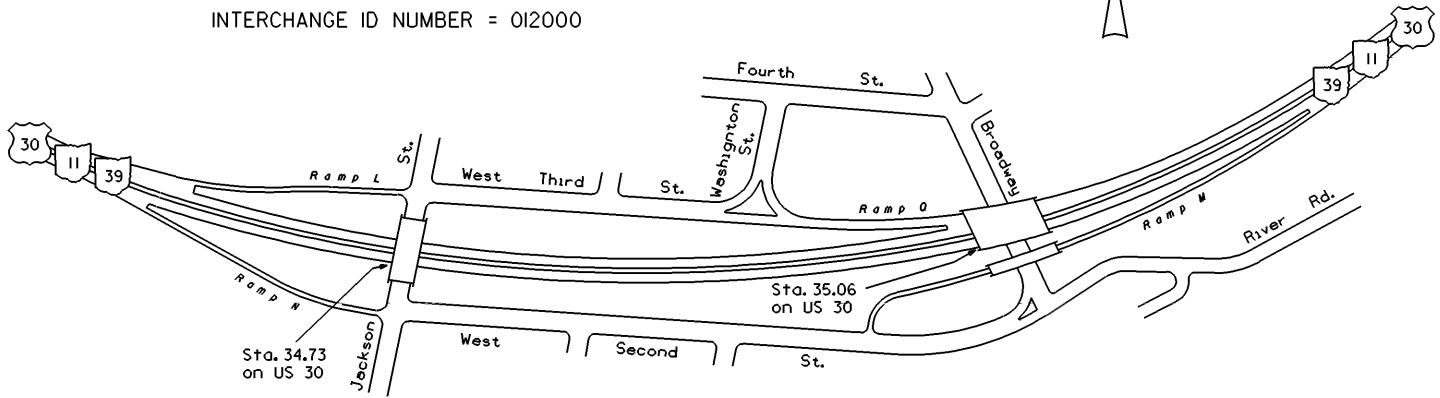
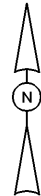
REVISED Jan 2009



INTERCHANGE
 US 30, SRs 7, 11, 39 & 267
 COLUMBIANA COUNTY
 INTERCHANGE ID NUMBER = 011900

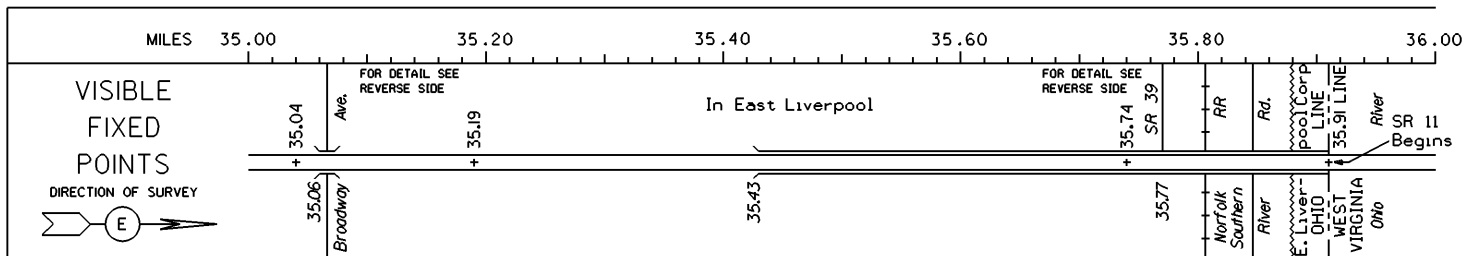
US 30 SHEET 7 OF 8
 SR 7 SHEET 2 OF 6
 SR 39 SHEET 4 OF 5
 SR 267 SHEET 1 OF 2

INTERCHANGE
US 30, SRs 11, 39,
Jackson St. & Broadway St.
COLUMBIANA COUNTY
INTERCHANGE ID NUMBER = 012000



STATE OF OHIO - DEPARTMENT OF TRANSPORTATION
STATE ROUTE SECTIONS ON CONTINUOUS MILEAGE STATIONING

DISTRICT 11
COUNTY COLUMBIANA
ROUTE US 30



STREET NAME	Lou Holtz Memorial Hwy.		
SECTION IDENTIFICATION	34.42	35.19	35.19
SECTION LENGTH	0.62	0.15	0.55
SURFACE TYPE & WIDTH	G24'ΔG24'	G36'ΔG24'	G36'ΔG36'
BASE TYPE & WIDTH	L36'ΔL24'	L36'ΔL24'	L36'ΔL36'
YEAR	1990	1990	1996
PROJECT NUMBER	G24'ΔG24' L24'ΔL24'	955	819
	PERPETUATION		

VISIBLE _____

FIXED _____

POINTS _____

STREET NAME	
SECTION IDENTIFICATION	
SECTION LENGTH	
SURFACE TYPE & WIDTH	
BASE TYPE & WIDTH	
YEAR	
PROJECT NUMBER	

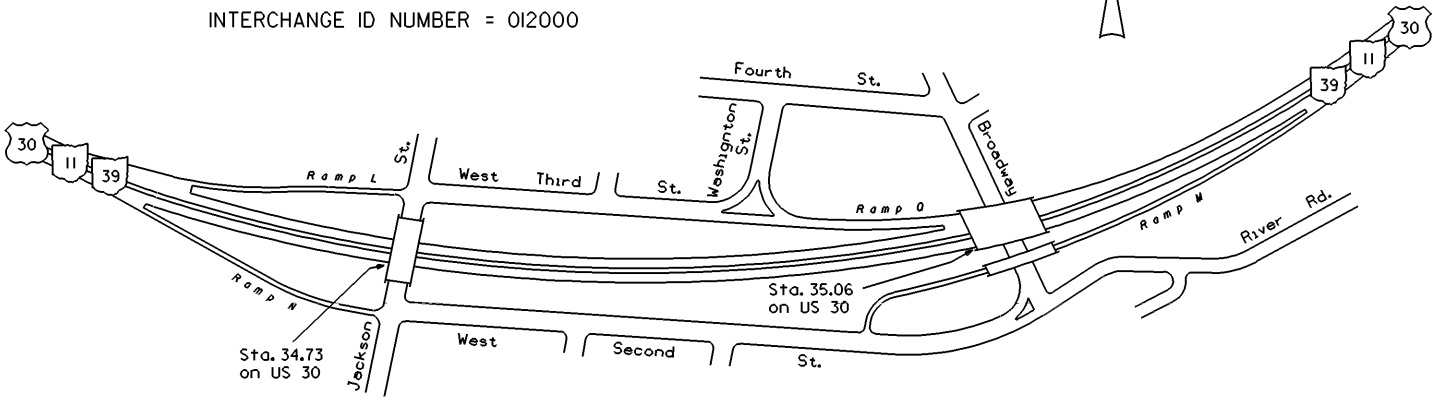
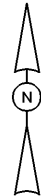
VISIBLE _____

FIXED _____

POINTS _____

STREET NAME	
SECTION IDENTIFICATION	
SECTION LENGTH	
SURFACE TYPE & WIDTH	
BASE TYPE & WIDTH	
YEAR	
PROJECT NUMBER	

INTERCHANGE
US 30, SRs 11, 39,
Jackson St. & Broadway St.
COLUMBIANA COUNTY
INTERCHANGE ID NUMBER = 012000



INTERCHANGE
US 30, SRs 11 & 39
COLUMBIANA COUNTY
INTERCHANGE ID NUMBER = 012100

