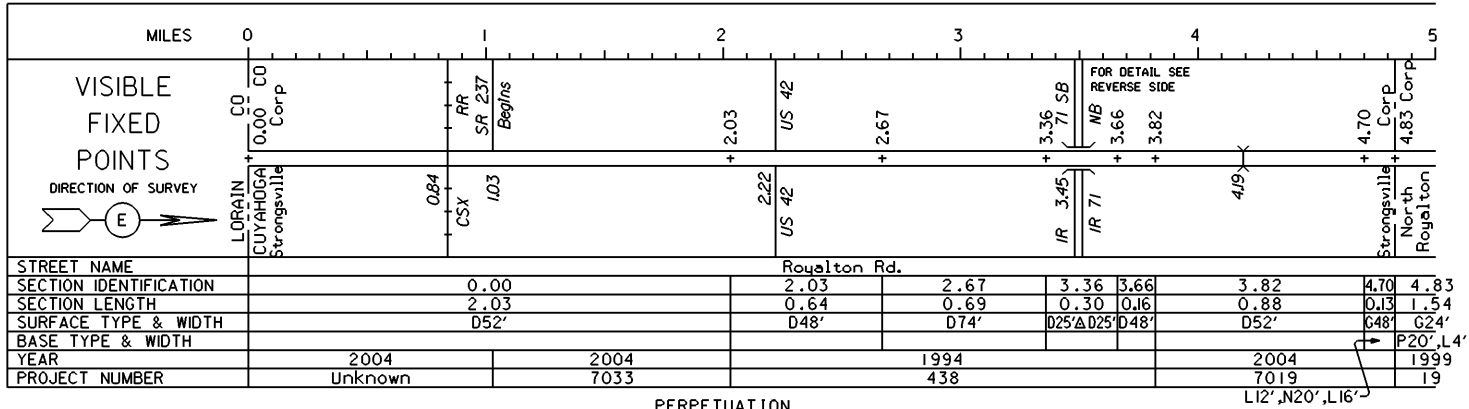


STATE OF OHIO - DEPARTMENT OF TRANSPORTATION

STATE ROUTE SECTIONS ON CONTINUOUS MILEAGE STATIONING

DISTRICT 12
 COUNTY CUYAHOGA
 ROUTE SR 82

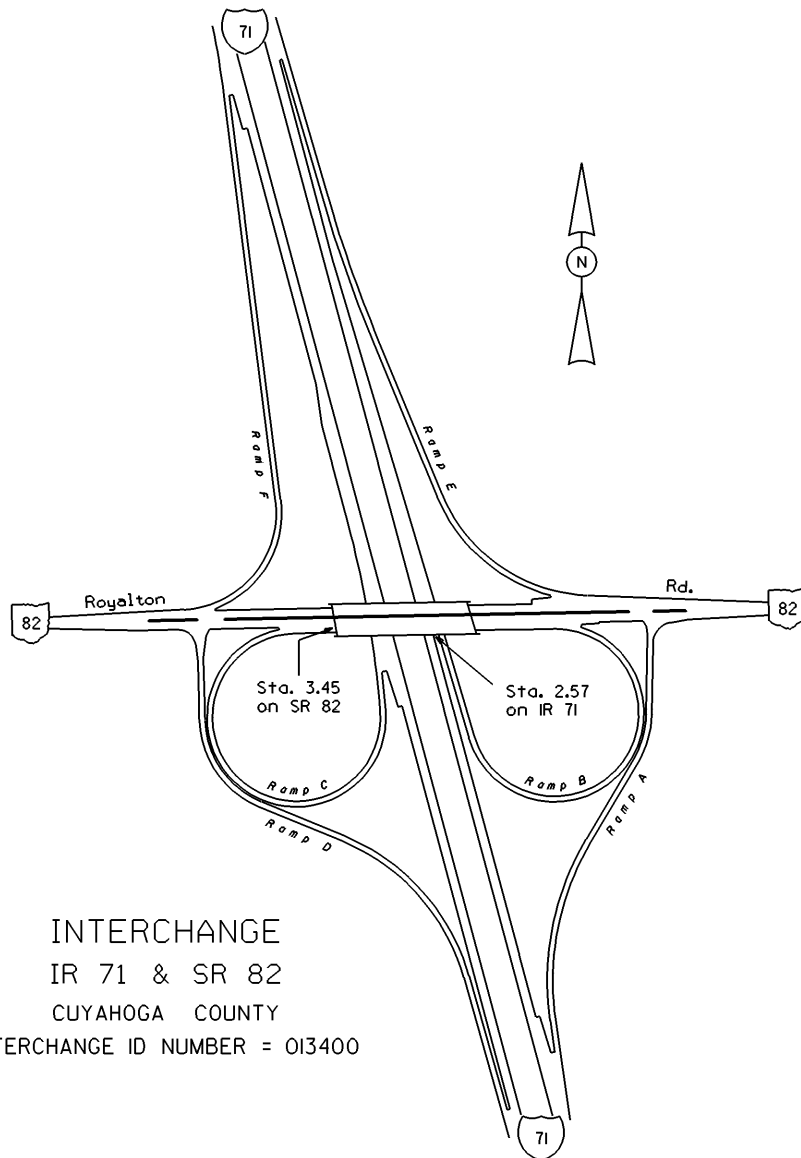


VISIBLE
 FIXED
 POINTS

STREET NAME	
SECTION IDENTIFICATION	
SECTION LENGTH	
SURFACE TYPE & WIDTH	
BASE TYPE & WIDTH	
YEAR	
PROJECT NUMBER	

VISIBLE
 FIXED
 POINTS

STREET NAME	
SECTION IDENTIFICATION	
SECTION LENGTH	
SURFACE TYPE & WIDTH	
BASE TYPE & WIDTH	
YEAR	
PROJECT NUMBER	



INTERCHANGE
 IR 71 & SR 82
 CUYAHOGA COUNTY
 INTERCHANGE ID NUMBER = 013400

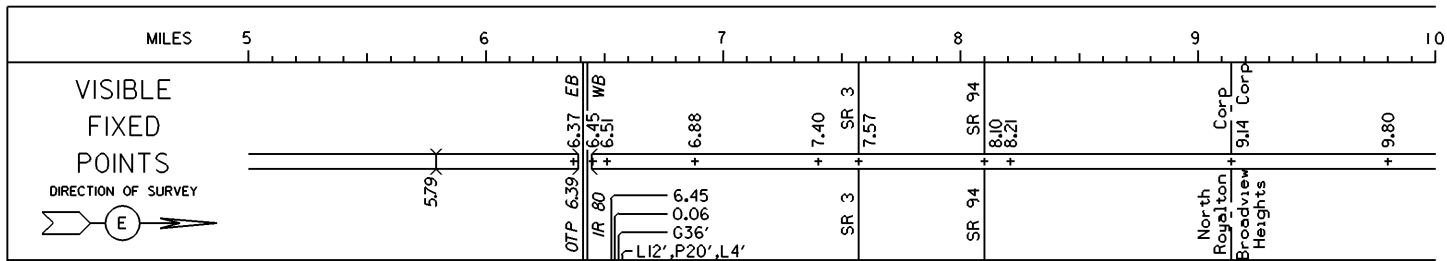
SR 71 SHEET 1 OF 8
 SR 82 SHEET 1 OF 4

REVISED Jan 2008

STATE OF OHIO - DEPARTMENT OF TRANSPORTATION

STATE ROUTE SECTIONS ON CONTINUOUS MILEAGE STATIONING

DISTRICT 12
 COUNTY CUYAHOGA
 ROUTE SR 82

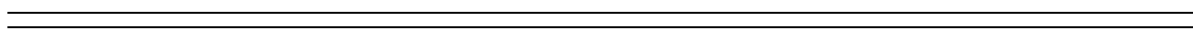


STREET NAME	Royalton Rd.									
SECTION IDENTIFICATION	4.83	6.37	6.51	6.88	7.40	7.57	8.10	8.21	9.14	9.80
SECTION LENGTH	1.54	0.08	0.37	0.52	0.17	0.53	0.11	0.93	0.66	0.26
SURFACE TYPE & WIDTH	G24'	G16'ΔG28'	G24'	G32'	G56'	G36'	G52'	G24'		G36'
BASE TYPE & WIDTH	P20',L4'	L16'ΔN28'	P20',L4'	T32'		P36'	L20',P24',L8'	P24'		L6',P24',L6'
YEAR	1999	2004	2004	1999	2004	1999	2004	1998		2002
PROJECT NUMBER	19	7021	7021	19	7021	19	7021	23		7024

PERPETUATION

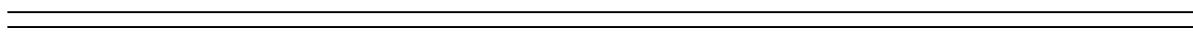
L12',T32',L12'

VISIBLE
 FIXED
 POINTS



STREET NAME	
SECTION IDENTIFICATION	
SECTION LENGTH	
SURFACE TYPE & WIDTH	
BASE TYPE & WIDTH	
YEAR	
PROJECT NUMBER	

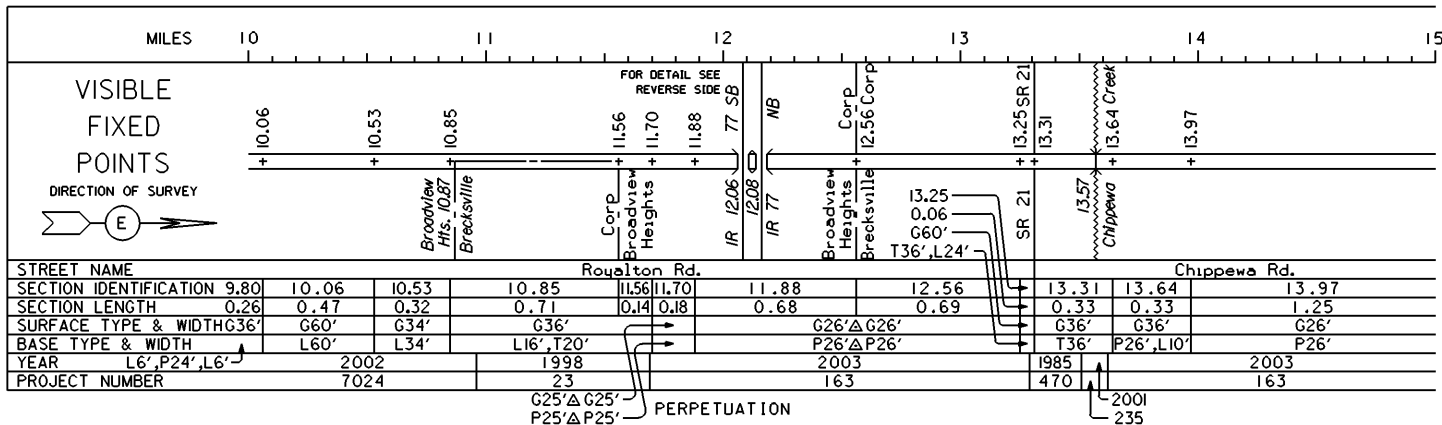
VISIBLE
 FIXED
 POINTS



STREET NAME	
SECTION IDENTIFICATION	
SECTION LENGTH	
SURFACE TYPE & WIDTH	
BASE TYPE & WIDTH	
YEAR	
PROJECT NUMBER	

STATE OF OHIO - DEPARTMENT OF TRANSPORTATION
STATE ROUTE SECTIONS ON CONTINUOUS MILEAGE STATIONING

DISTRICT 12
COUNTY CUYAHOGA
ROUTE SR 82

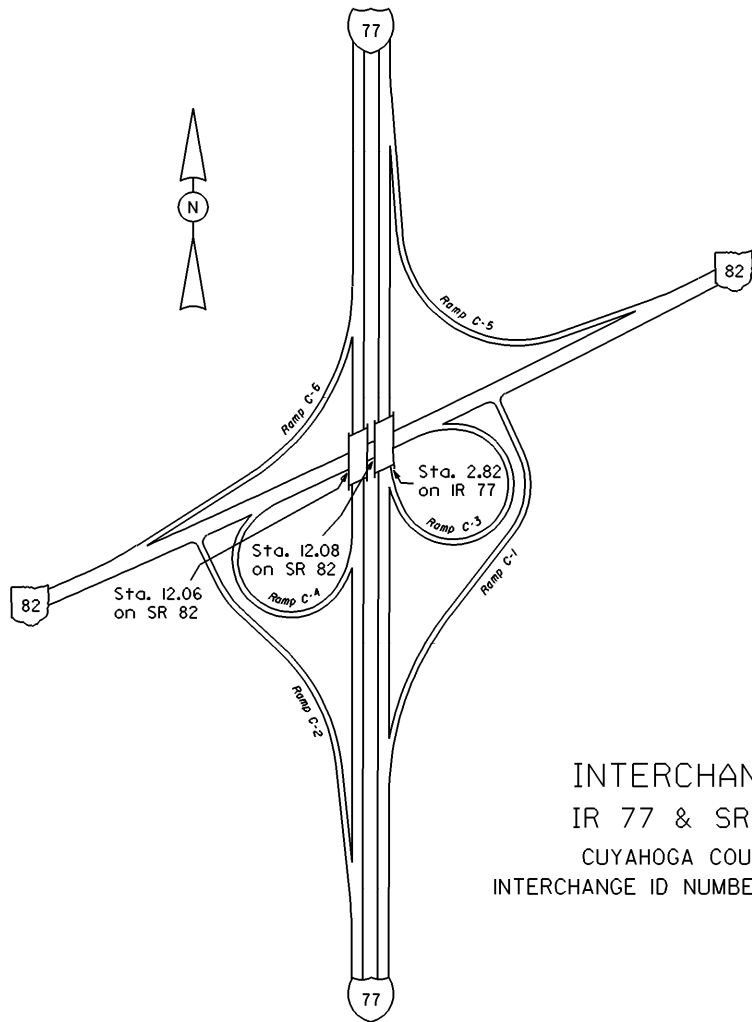


VISIBLE
FIXED
POINTS

STREET NAME
SECTION IDENTIFICATION
SECTION LENGTH
SURFACE TYPE & WIDTH
BASE TYPE & WIDTH
YEAR
PROJECT NUMBER

VISIBLE
FIXED
POINTS

STREET NAME
SECTION IDENTIFICATION
SECTION LENGTH
SURFACE TYPE & WIDTH
BASE TYPE & WIDTH
YEAR L6'P24',L6'
PROJECT NUMBER

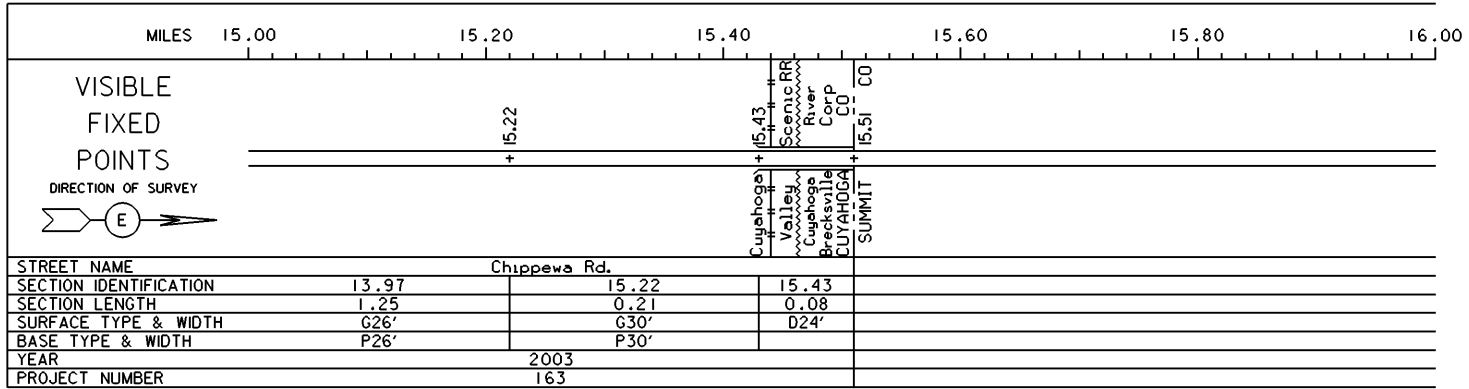


INTERCHANGE
 IR 77 & SR 82
 CUYAHOGA COUNTY
 INTERCHANGE ID NUMBER = 014600

STATE OF OHIO - DEPARTMENT OF TRANSPORTATION

STATE ROUTE SECTIONS ON CONTINUOUS MILEAGE STATIONING

DISTRICT 12
 COUNTY CUYAHOGA
 ROUTE SR 82



PERPETUATION

VISIBLE
 FIXED
 POINTS

STREET NAME
 SECTION IDENTIFICATION
 SECTION LENGTH
 SURFACE TYPE & WIDTH
 BASE TYPE & WIDTH
 YEAR
 PROJECT NUMBER

VISIBLE
 FIXED
 POINTS

STREET NAME
 SECTION IDENTIFICATION
 SECTION LENGTH
 SURFACE TYPE & WIDTH
 BASE TYPE & WIDTH
 YEAR
 PROJECT NUMBER