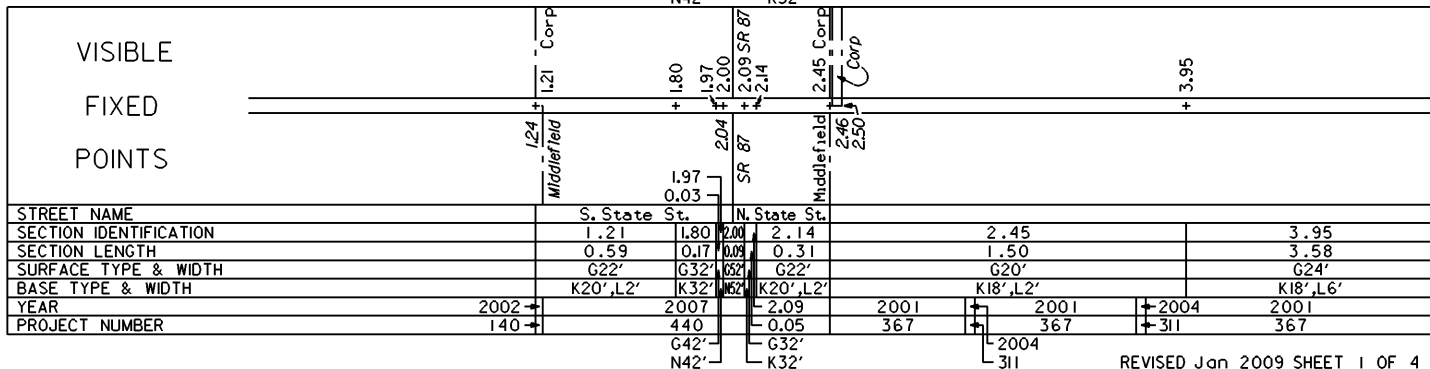
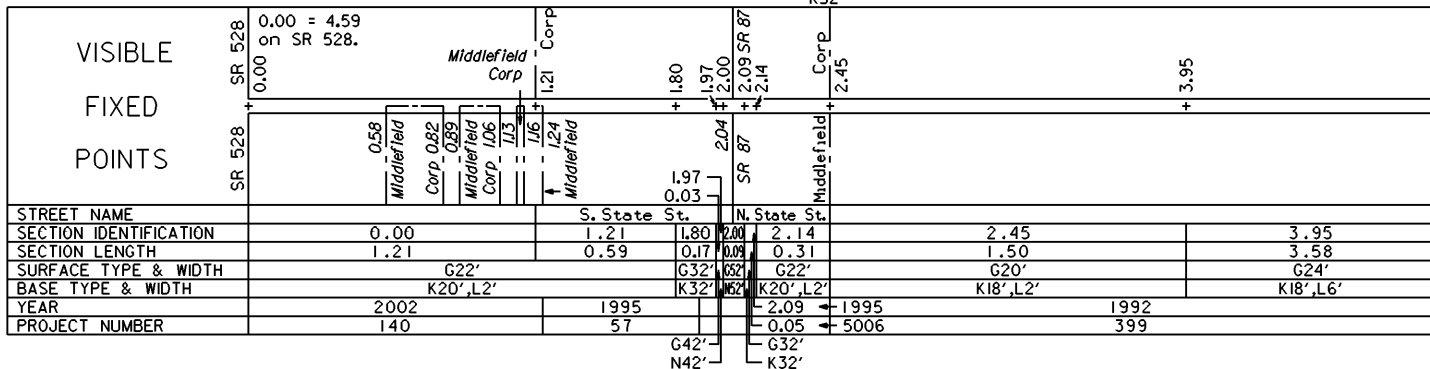
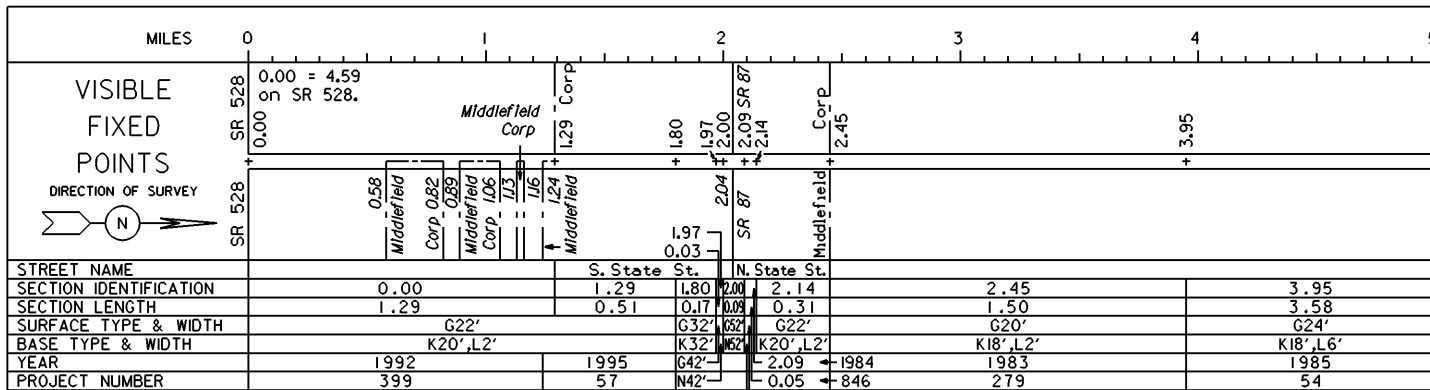


STATE OF OHIO - DEPARTMENT OF TRANSPORTATION

STATE ROUTE SECTIONS ON CONTINUOUS MILEAGE STATIONING

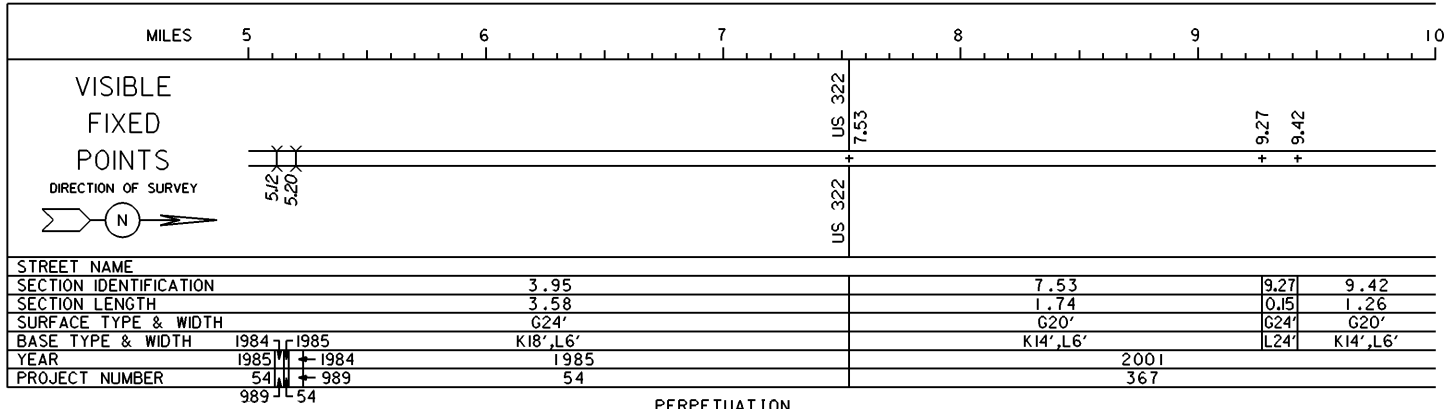
DISTRICT	12
COUNTY	GEAUGA
ROUTE	SR 608



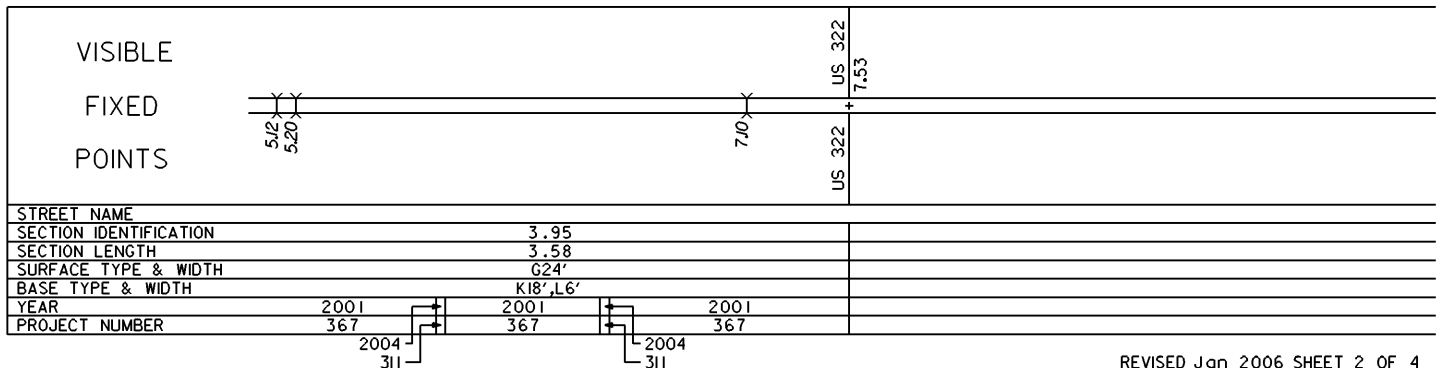
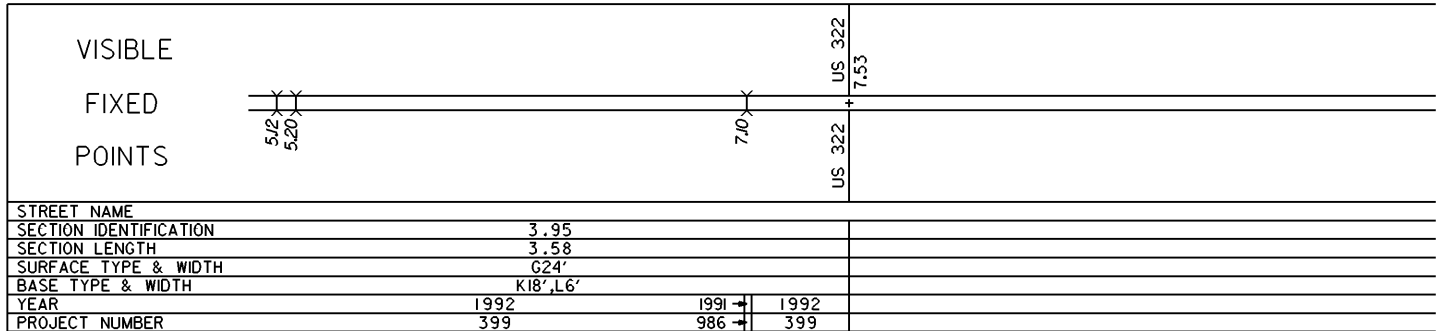
STATE OF OHIO - DEPARTMENT OF TRANSPORTATION

STATE ROUTE SECTIONS ON CONTINUOUS MILEAGE STATIONING

DISTRICT	12
COUNTY	GEAUGA
ROUTE	SR 608

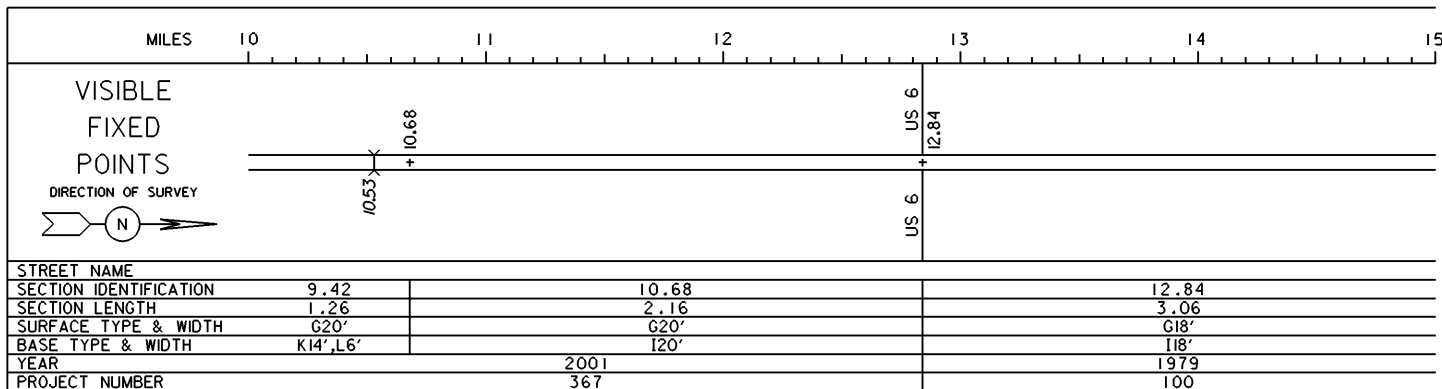


PERPETUATION

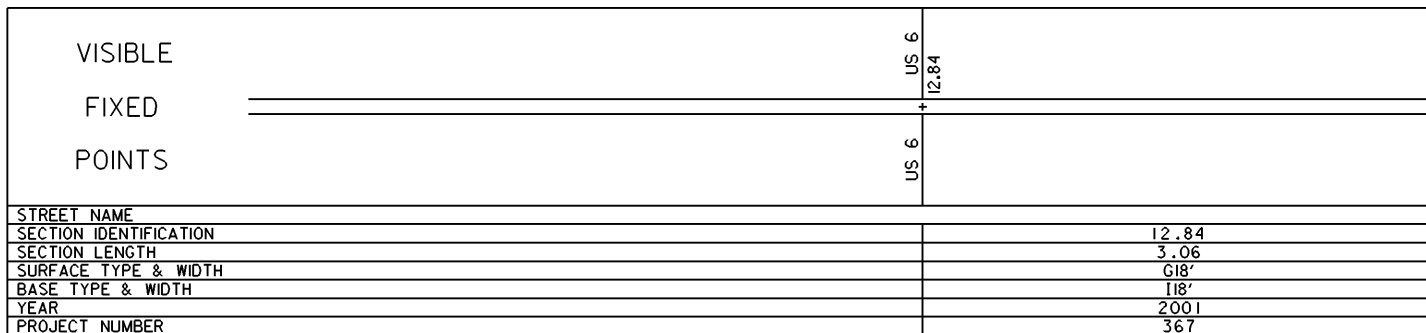
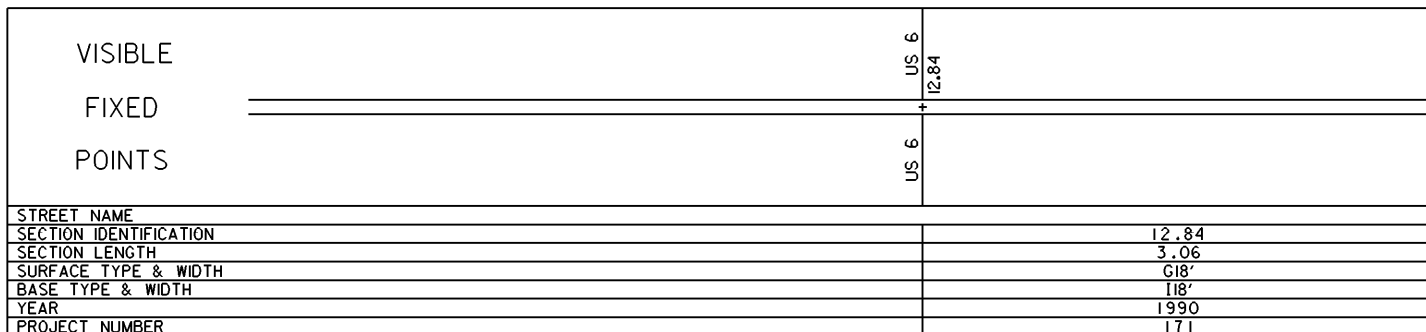


STATE OF OHIO - DEPARTMENT OF TRANSPORTATION
STATE ROUTE SECTIONS ON CONTINUOUS MILEAGE STATIONING

DISTRICT 12
COUNTY GEAUGA
ROUTE SR 608



PERPETUATION



STATE OF OHIO - DEPARTMENT OF TRANSPORTATION
 STATE ROUTE SECTIONS ON CONTINUOUS MILEAGE STATIONING

DISTRICT 12
 COUNTY GEauga
 ROUTE SR 608

MILES	15.00	15.20	15.40	15.60	15.80	16.00
VISIBLE FIXED POINTS						CO 15.90 - CO
DIRECTION OF SURVEY						GEAUGA LAKE
STREET NAME						
SECTION IDENTIFICATION	12.84					
SECTION LENGTH	3.06					
SURFACE TYPE & WIDTH	G18'					
BASE TYPE & WIDTH	I18'					
YEAR	1979					
PROJECT NUMBER	100					

PERPETUATION

VISIBLE FIXED POINTS						CO 15.90 - CO
DIRECTION OF SURVEY						GEAUGA LAKE
STREET NAME						
SECTION IDENTIFICATION	12.84					
SECTION LENGTH	3.06					
SURFACE TYPE & WIDTH	G18'					
BASE TYPE & WIDTH	I18'					
YEAR	1990					
PROJECT NUMBER	171					

VISIBLE FIXED POINTS						CO 15.90 - CO
DIRECTION OF SURVEY						GEAUGA LAKE
STREET NAME						
SECTION IDENTIFICATION	12.84					
SECTION LENGTH	3.06					
SURFACE TYPE & WIDTH	G18'					
BASE TYPE & WIDTH	I18'					
YEAR	2001					
PROJECT NUMBER	367					