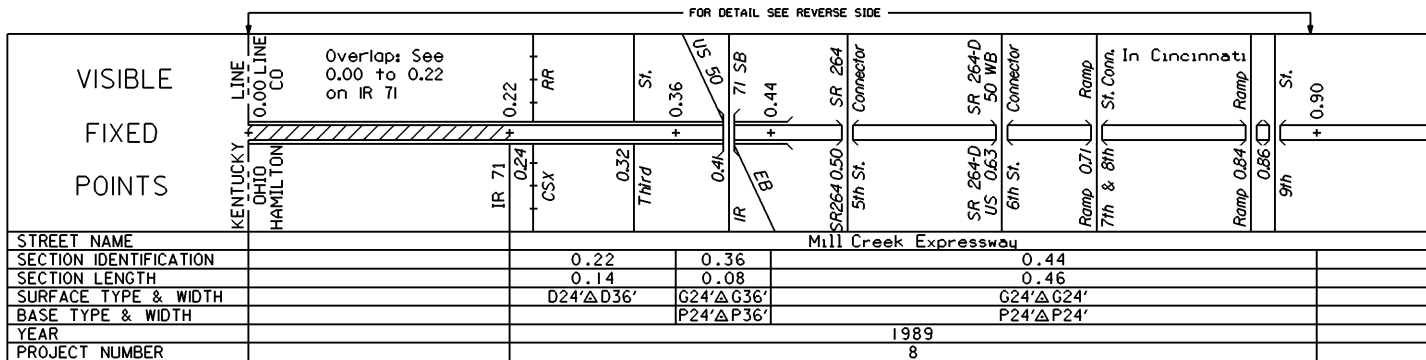
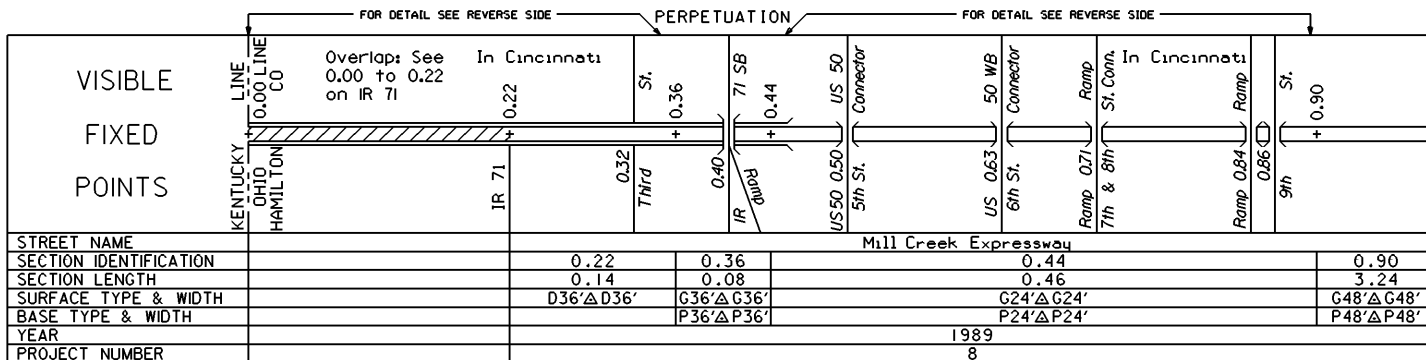
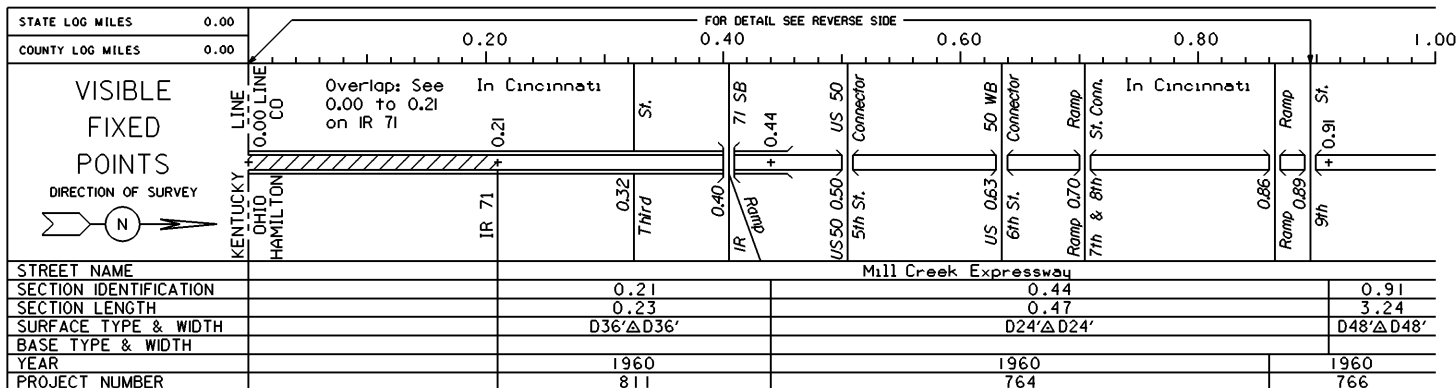


STATE OF OHIO - DEPARTMENT OF TRANSPORTATION
STATE ROUTE SECTIONS ON CONTINUOUS MILEAGE STATIONING

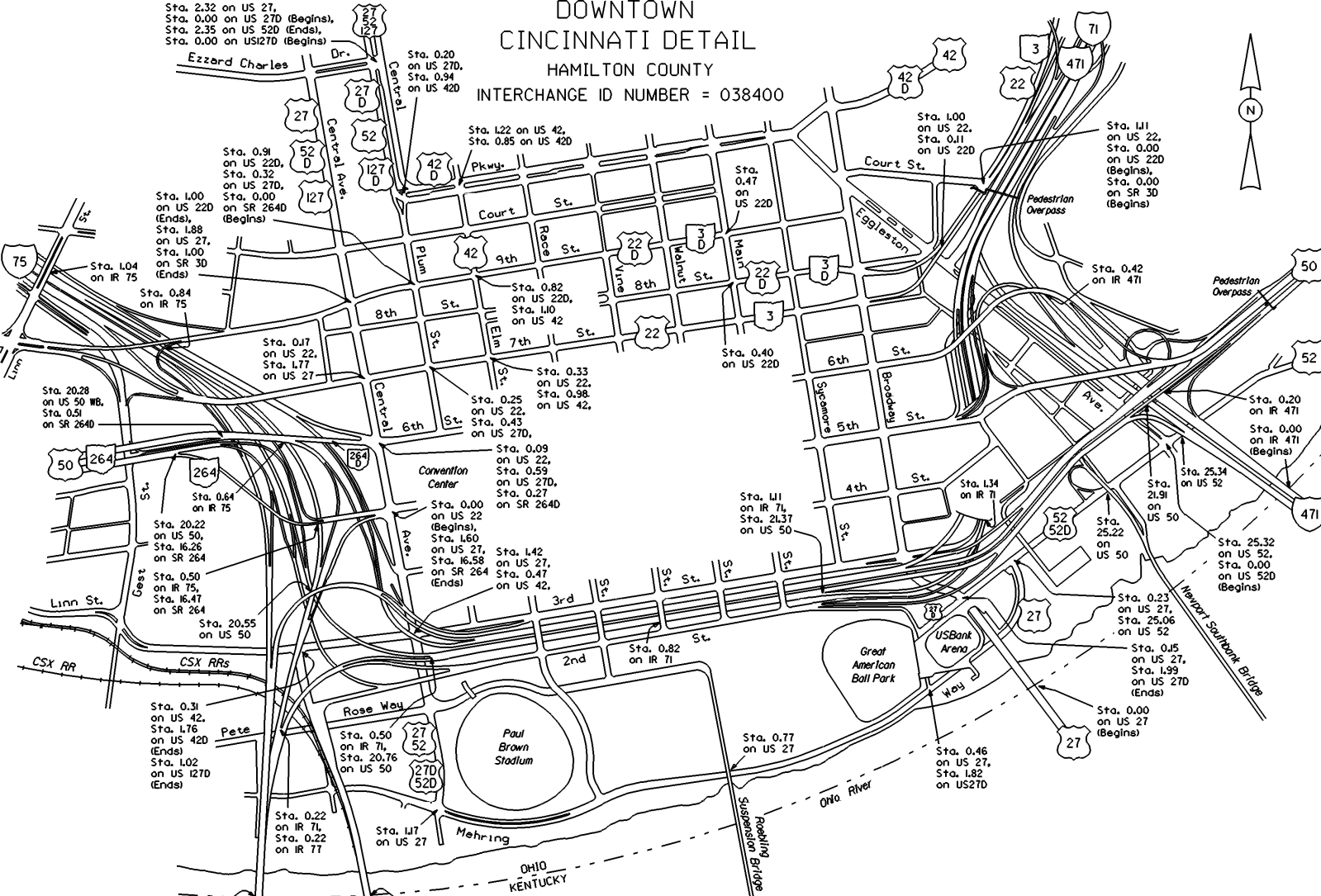
DISTRICT 8
COUNTY HAMILTON
ROUTE IR 75



DOWNTOWN CINCINNATI DETAIL

HAMILTON COUNTY

INTERCHANGE ID NUMBER = 038400



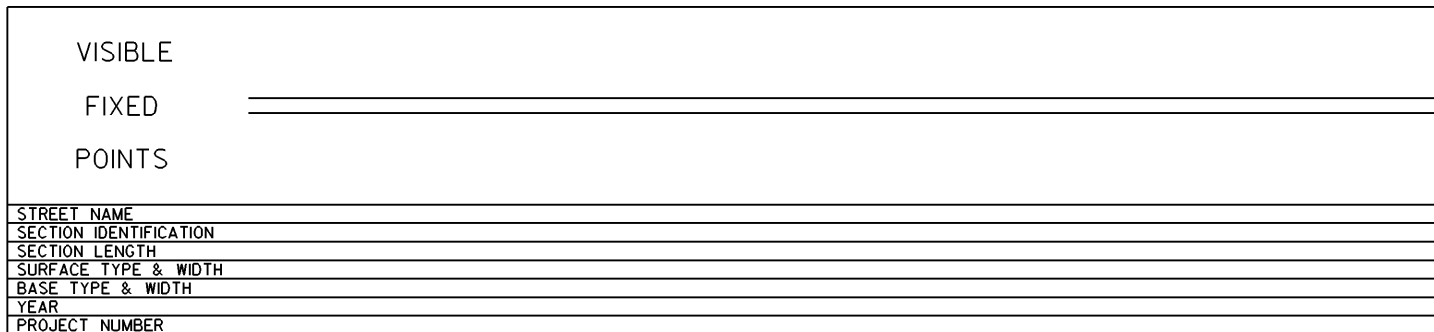
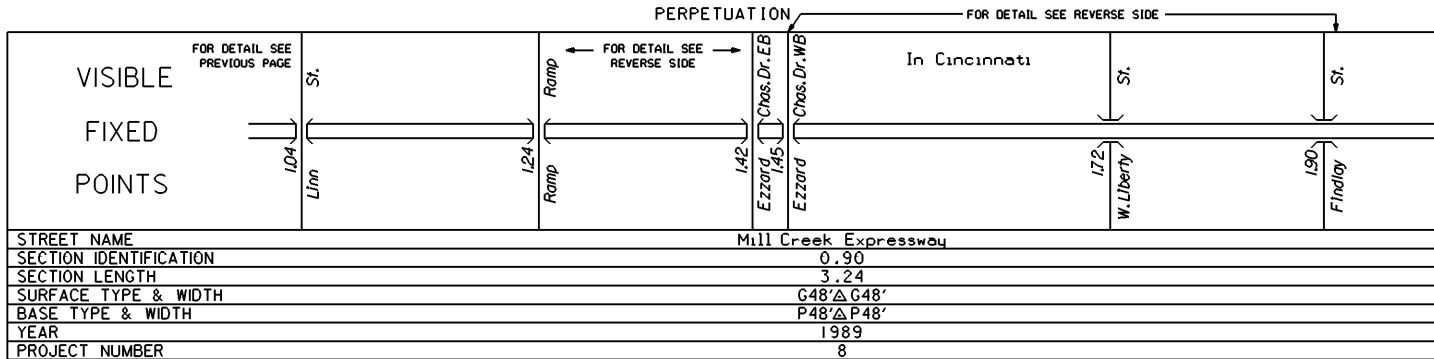
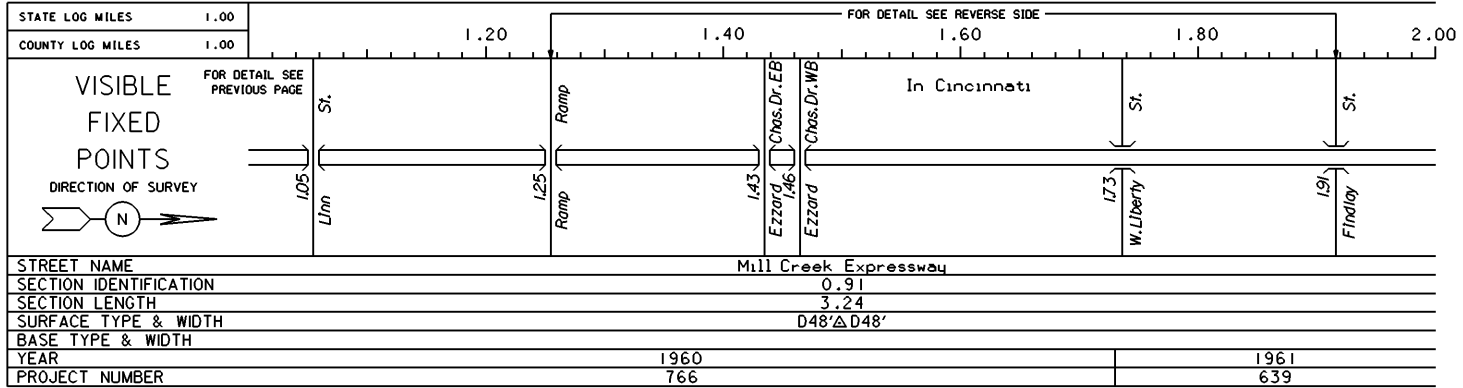
IR 71 SHEET 1 & 2 OF 9	US 42 SHEET 1 OF 6
IR 75 SHEET 1 & 2 OF 9	US 42D SHEET 1 OF 1
IR 471 SHEET 1 OF 1	US 50 SHEET 6 & 7 OF 13
US 22 SHEET 1 OF 5	US 52 SHEET 4 OF 7
US 22D SHEET 1 OF 1	SR 264 SHEET 4 OF 4
US 27 SHEET 1 OF 5	SR 264D SHEET 1 OF 1
US 27D SHEET 1 OF 1	

REVISED Jan 2007

STATE OF OHIO - DEPARTMENT OF TRANSPORTATION

STATE ROUTE SECTIONS ON CONTINUOUS MILEAGE STATIONING

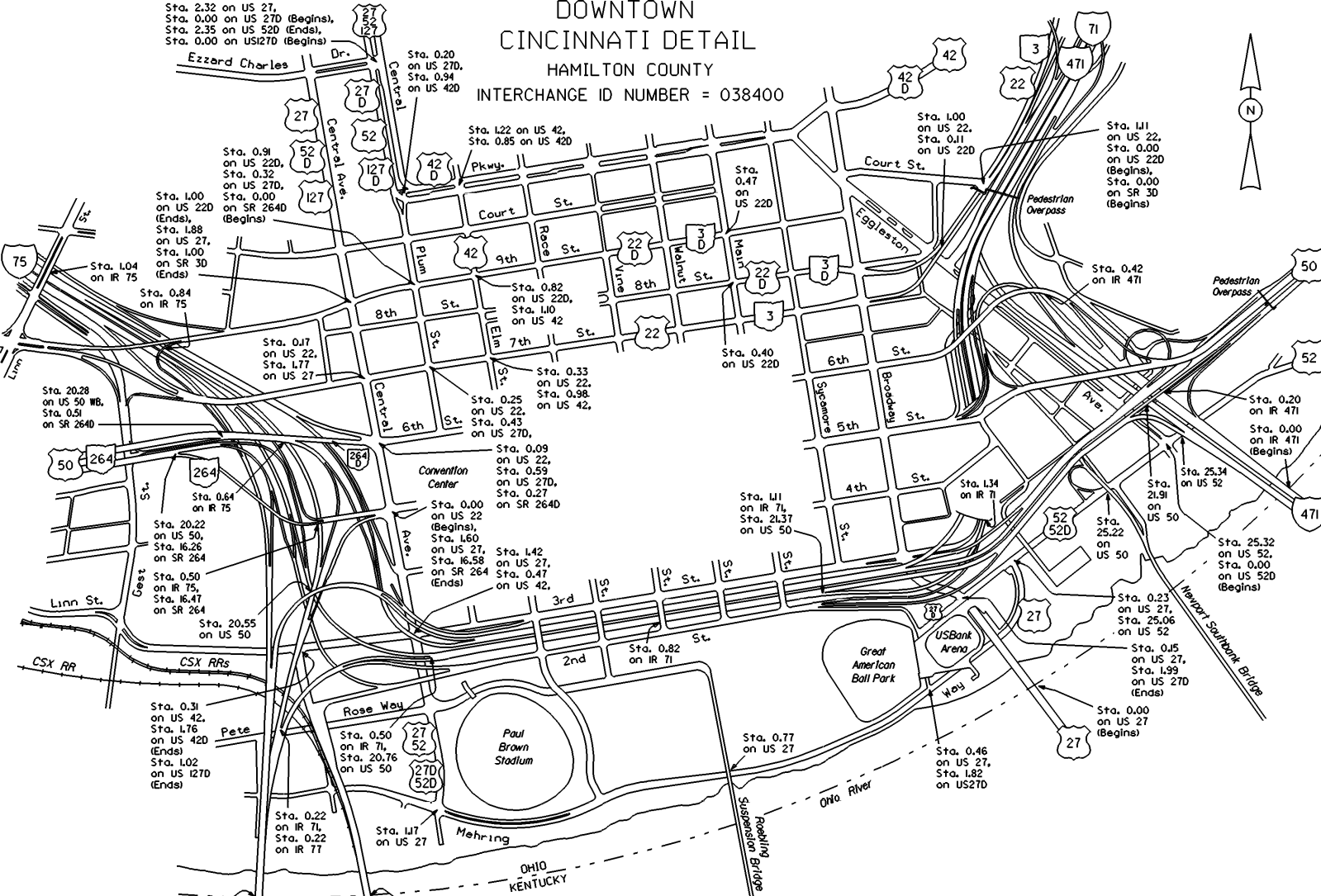
DISTRICT	8
COUNTY	HAMILTON
ROUTE	IR 75



DOWNTOWN CINCINNATI DETAIL

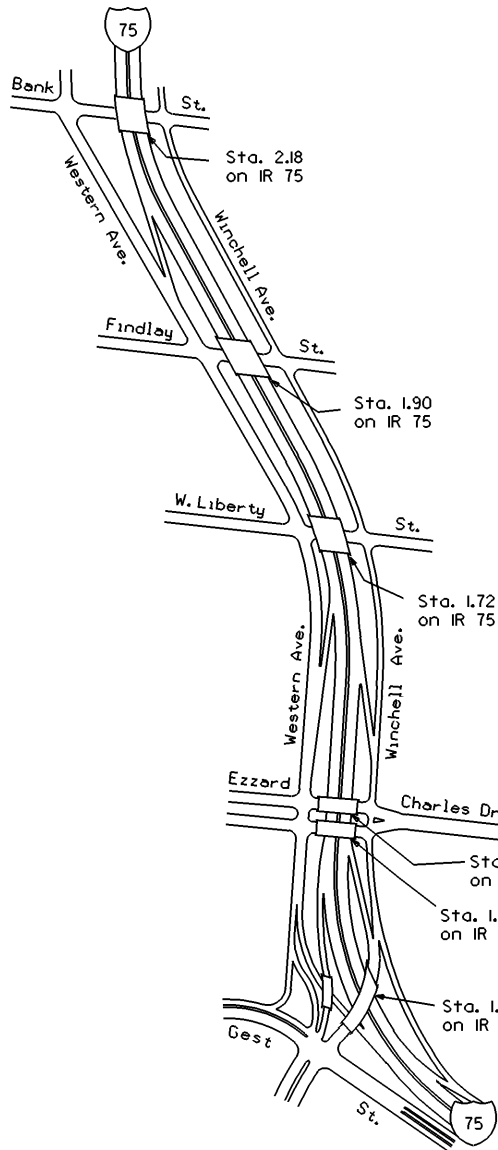
HAMILTON COUNTY

INTERCHANGE ID NUMBER = 038400



IR 71 SHEET 1 & 2 OF 9	US 42 SHEET 1 OF 6
IR 75 SHEET 1 & 2 OF 9	US 42D SHEET 1 OF 1
IR 471 SHEET 1 OF 1	US 50 SHEET 6 & 7 OF 13
US 22 SHEET 1 OF 5	US 52 SHEET 4 OF 7
US 22D SHEET 1 OF 1	SR 264 SHEET 4 OF 4
US 27 SHEET 1 OF 5	SR 264D SHEET 1 OF 1
US 27D SHEET 1 OF 1	

REVISED Jan 2007



INTERCHANGE

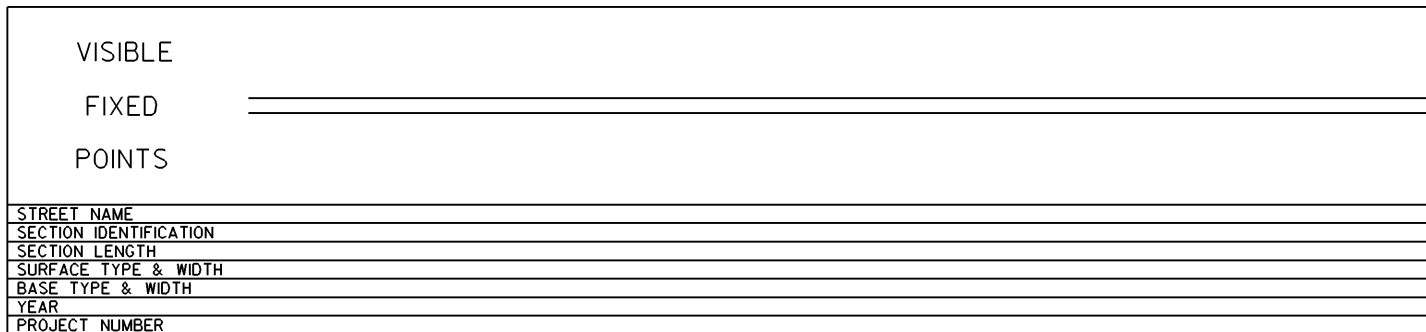
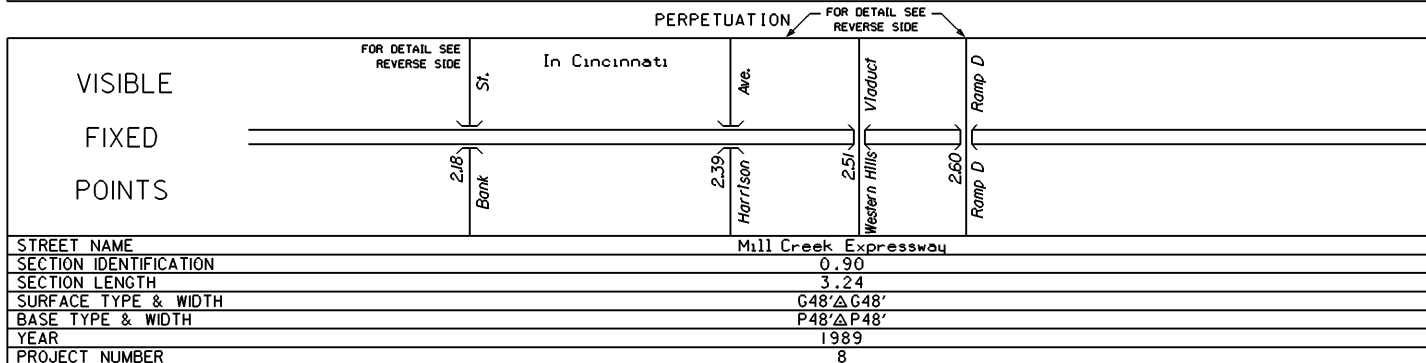
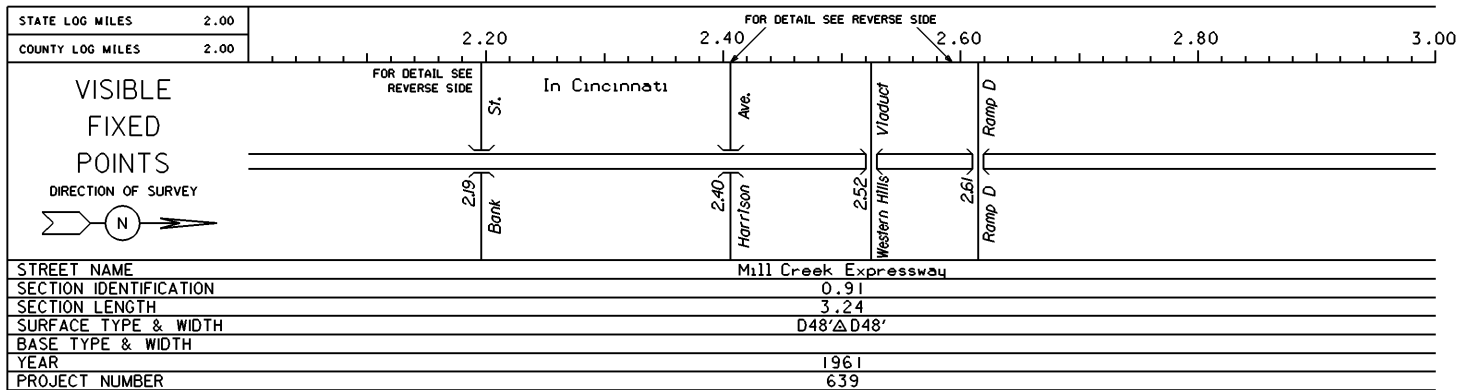
IR 75, Ezzard Charles Dr,
W. Liberty St., Findlay St.
& Bank St.

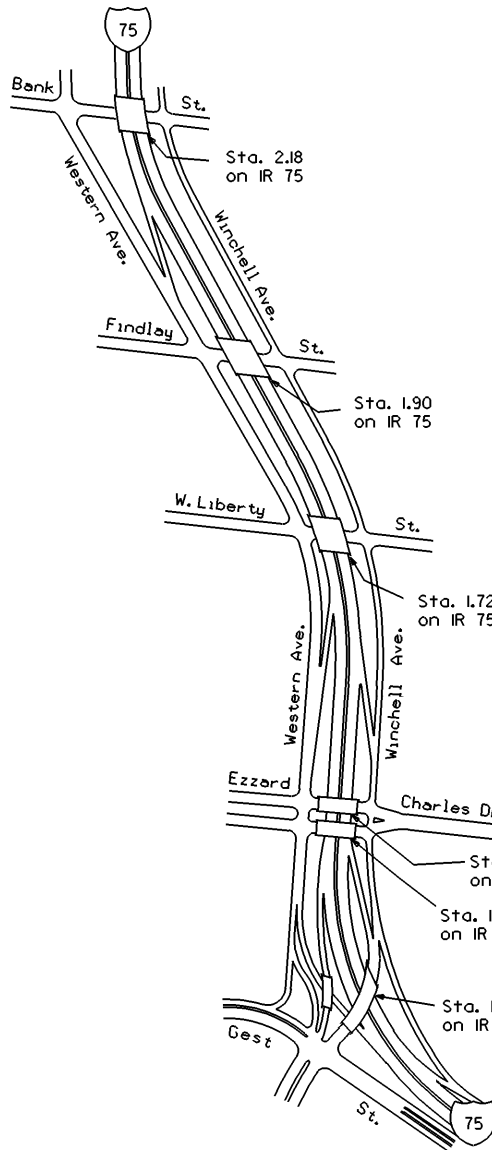
HAMILTON COUNTY

INTERCHANGE ID NUMBER = 040900

STATE OF OHIO - DEPARTMENT OF TRANSPORTATION
STATE ROUTE SECTIONS ON CONTINUOUS MILE STATIONING

DISTRICT 8
COUNTY HAMILTON
ROUTE IR 75





INTERCHANGE

IR 75, Ezzard Charles Dr,
W. Liberty St., Findlay St.
& Bank St.

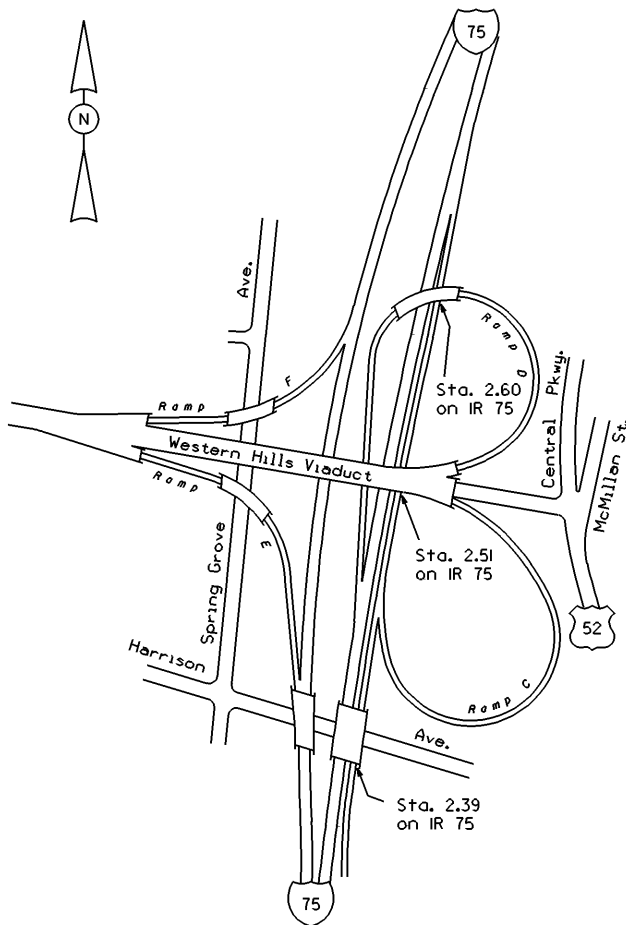
HAMILTON COUNTY

INTERCHANGE ID NUMBER = 040900



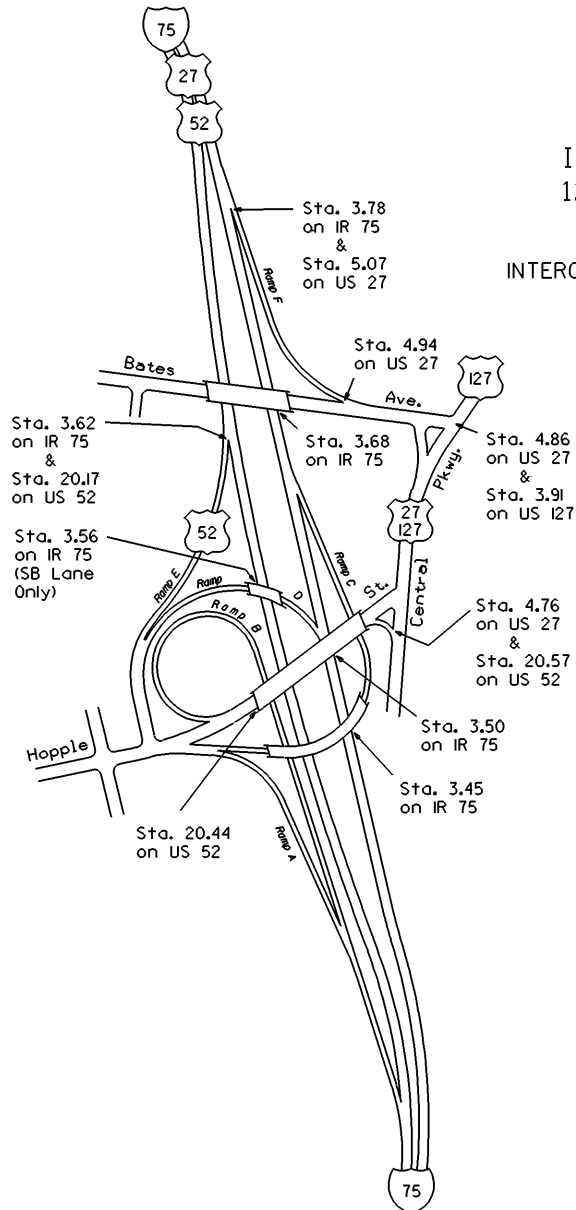
INTERCHANGE
IR 75 & Western Hills Viaduct
HAMILTON COUNTY

INTERCHANGE ID NUMBER = 041000





INTERCHANGE
IR 75, USs 27, 52,
127 & Hopple St.
HAMILTON COUNTY
INTERCHANGE ID NUMBER = 041100

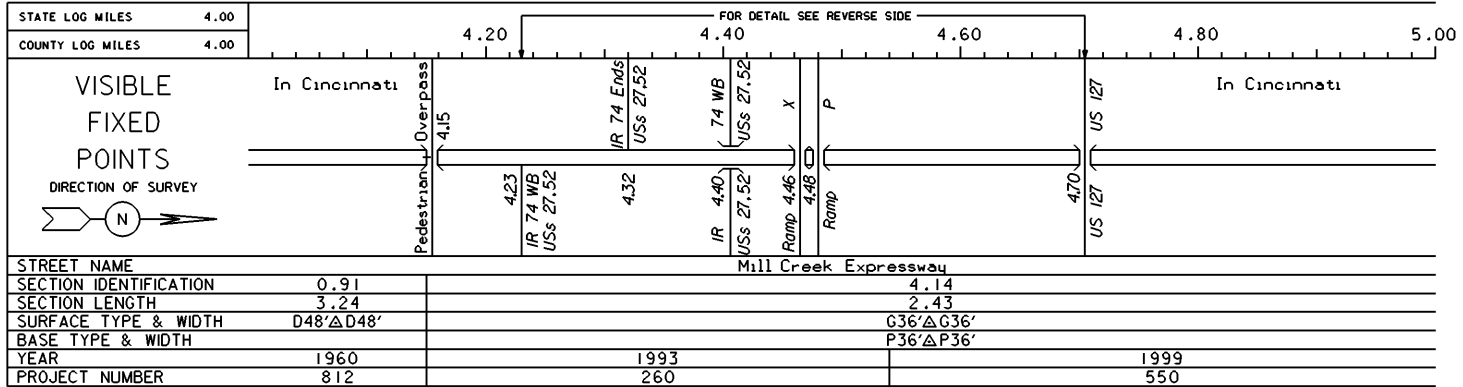


IR 75 SHEET 4 OF 9
US 27 SHEET 2 OF 5
US 27 SHEET 3 OF 5
US 52 SHEET 3 OF 7

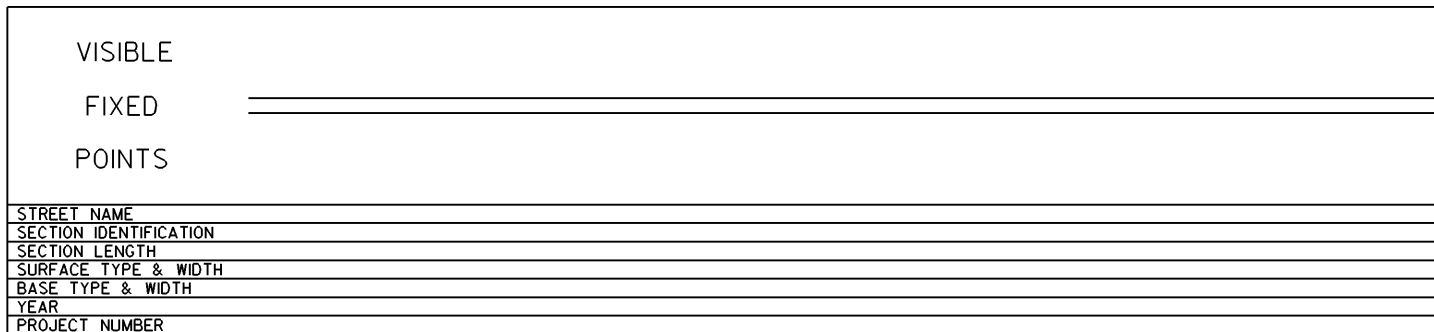
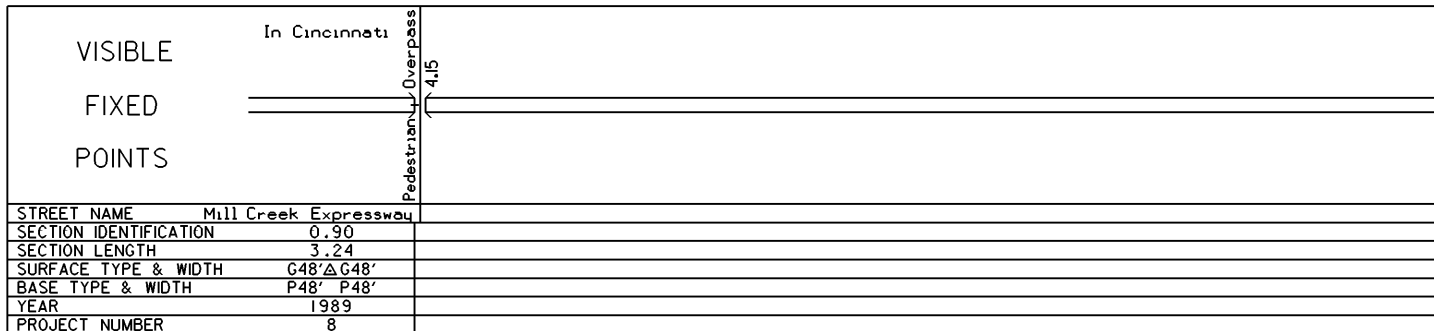
STATE OF OHIO - DEPARTMENT OF TRANSPORTATION

STATE ROUTE SECTIONS ON CONTINUOUS MILEAGE STATIONING

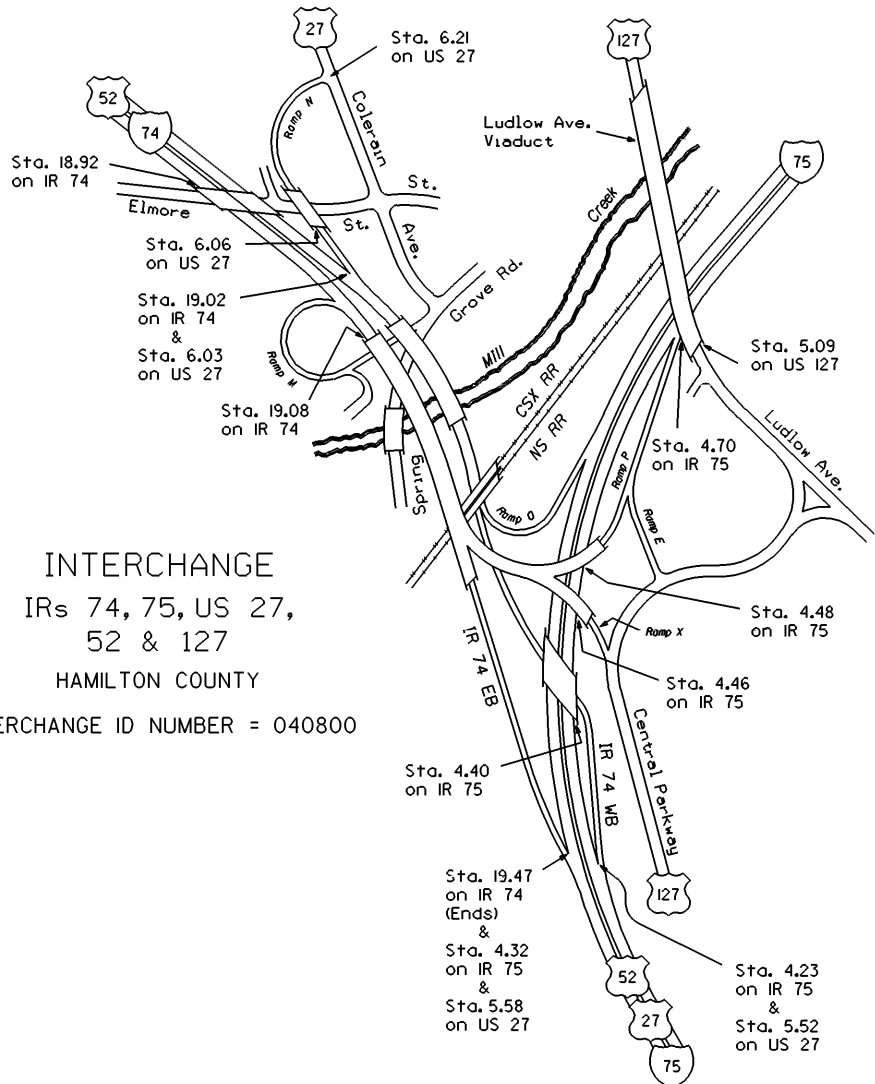
DISTRICT	8
COUNTY	HAMILTON
ROUTE	IR 75



PERPETUATION



INTERCHANGE
 IRs 74, 75, US 27,
 52 & 127
 HAMILTON COUNTY
 INTERCHANGE ID NUMBER = 040800



IR 74 SHEET 4 OF 4
 IR 75 SHEET 5 OF 9
 US 27 SHEET 3 OF 5
 US 127 SHEET 2 OF 4

STATE OF OHIO - DEPARTMENT OF TRANSPORTATION
STATE ROUTE SECTIONS ON CONTINUOUS MILEAGE STATIONING

DISTRICT 8
COUNTY HAMILTON
ROUTE IR 75

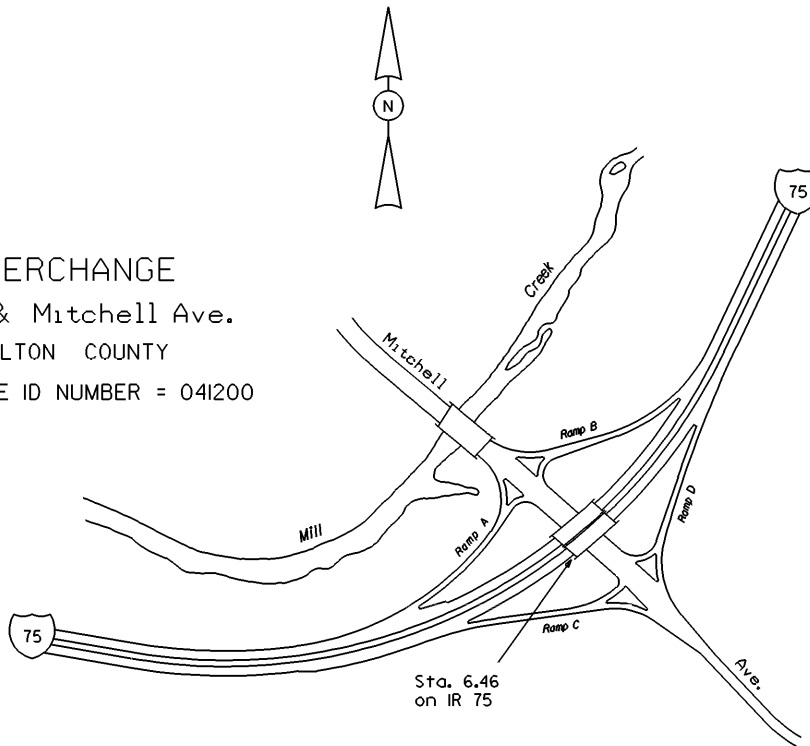
STATE LOG MILES	5.00	6		7		8		9		10
COUNTY LOG MILES	5.00									
VISIBLE FIXED POINTS DIRECTION OF SURVEY										
STREET NAME	Mill Creek Expressway									
SECTION IDENTIFICATION	4.14	6.58		7.72		8.55		9.74		
SECTION LENGTH	2.43	1.15		0.83		1.19		0.37		
SURFACE TYPE & WIDTH	G36'ΔG36'		G40'ΔG40'		G38'ΔG38'		D24'ΔD24'			
BASE TYPE & WIDTH	P36'ΔP36'		P40'ΔP40'		P38'ΔP38'					
YEAR	1999				1993				1947	
PROJECT NUMBER	550				260				414	

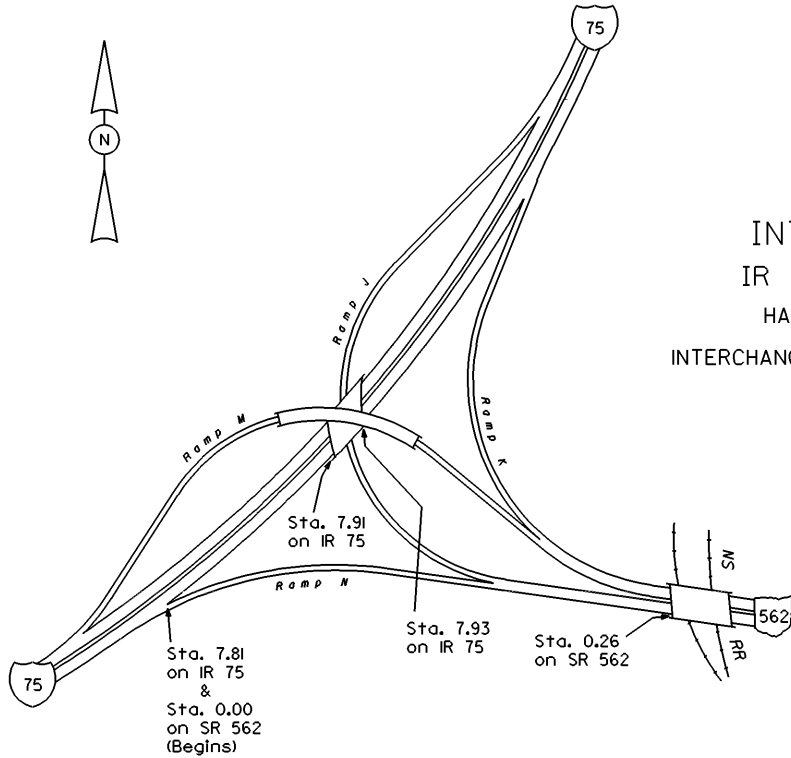
PERPETUATION

VISIBLE FIXED POINTS										
STREET NAME	Mill Creek Expressway									
SECTION IDENTIFICATION	7.72		8.55		9.74					
SECTION LENGTH	0.83		1.19		0.37					
SURFACE TYPE & WIDTH	G40'ΔG40'		G38'ΔG38'							
BASE TYPE & WIDTH	P40'ΔP40'		P38'ΔP38'							
YEAR	1999		1993		1981					
PROJECT NUMBER	550		260		835					

VISIBLE FIXED POINTS										
STREET NAME	Mill Creek Expressway									
SECTION IDENTIFICATION	9.74									
SECTION LENGTH	0.37									
SURFACE TYPE & WIDTH	G38'ΔG38'									
BASE TYPE & WIDTH	P38'ΔP38'									
YEAR	1993									
PROJECT NUMBER	656									

INTERCHANGE
IR 75 & Mitchell Ave.
HAMILTON COUNTY
INTERCHANGE ID NUMBER = 04I200

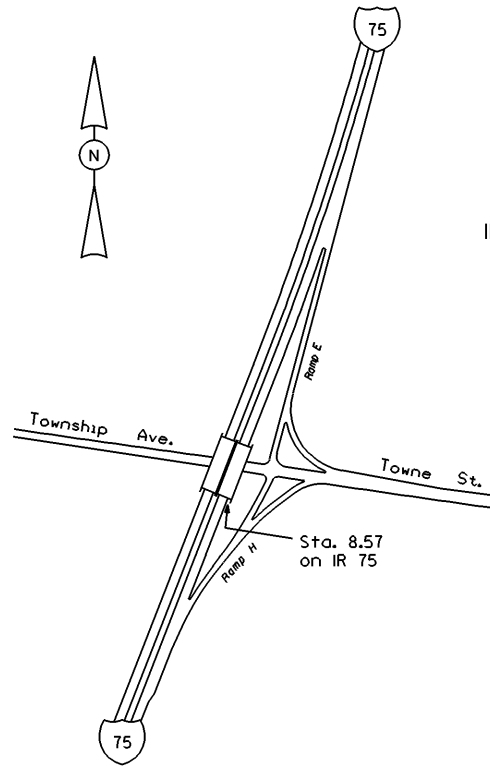




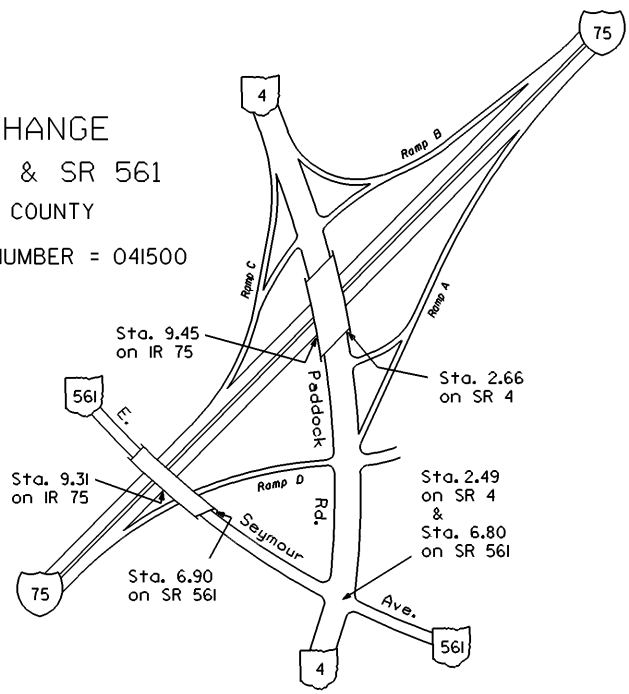
INTERCHANGE
IR 75 & SR 562
HAMILTON COUNTY
INTERCHANGE ID NUMBER = 041300



INTERCHANGE
IR 75 & Towne St.
HAMILTON COUNTY
INTERCHANGE ID NUMBER = 041400



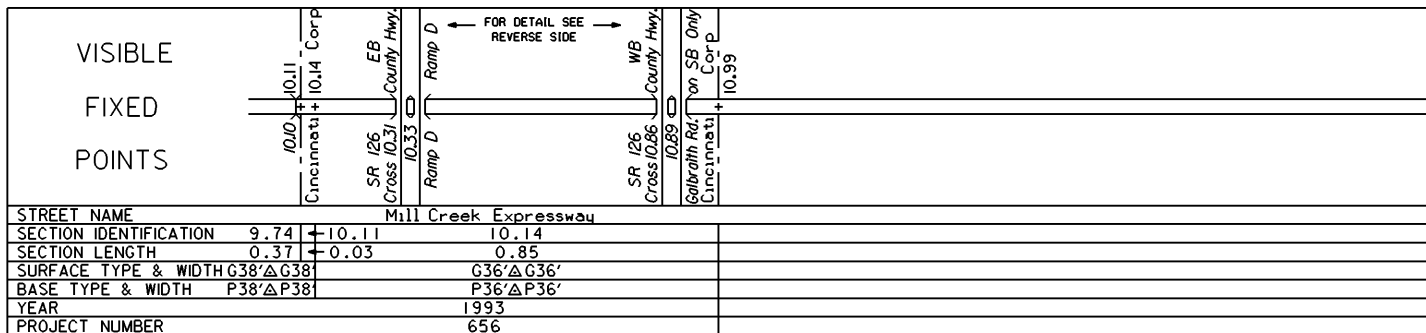
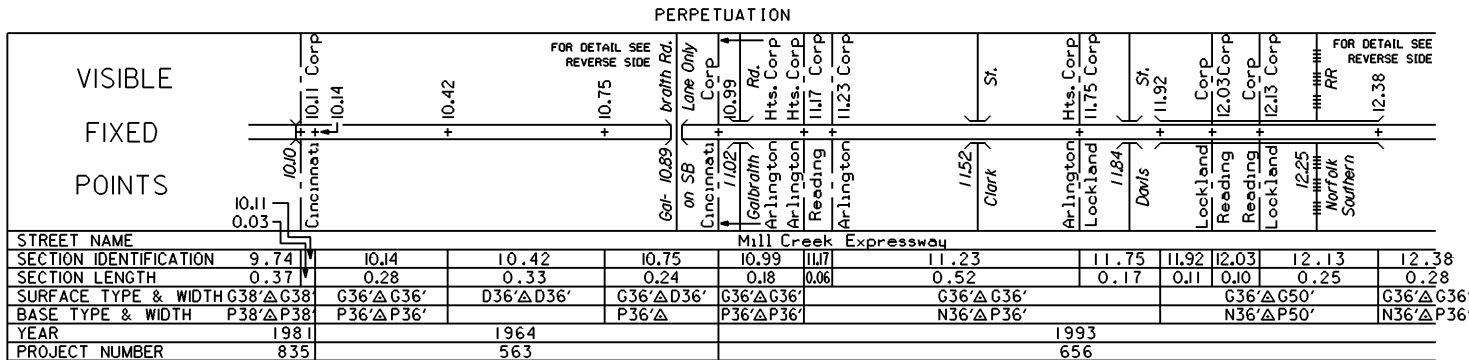
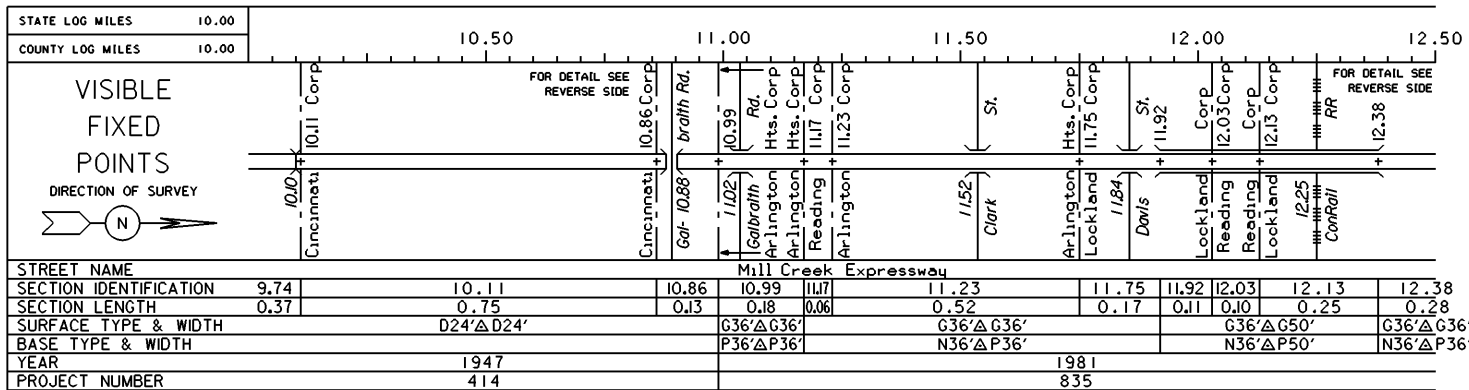
INTERCHANGE
IR 75, SR 4 & SR 561
HAMILTON COUNTY
INTERCHANGE ID NUMBER = 041500



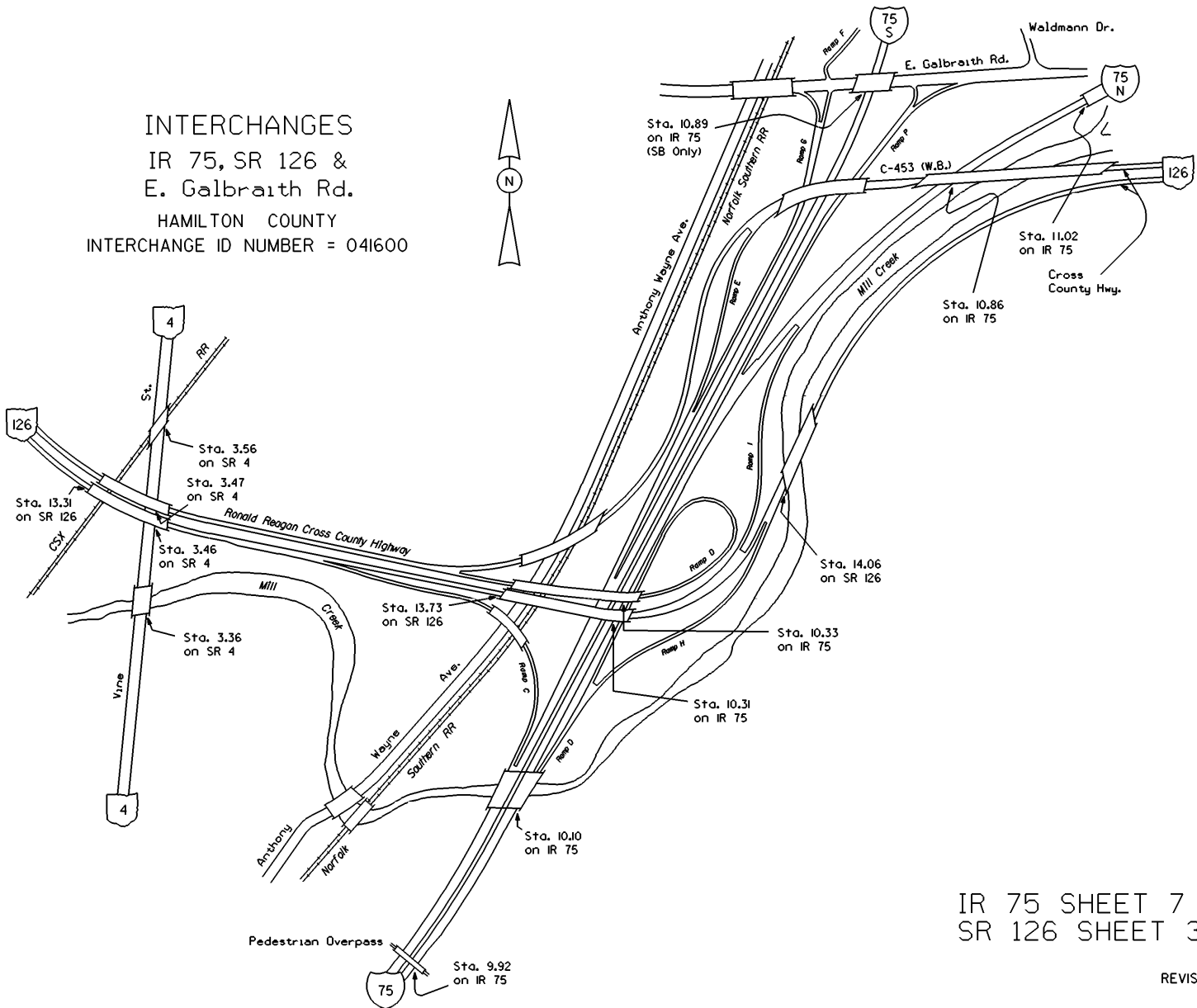
IR 75 SHEET 6 OF 9
SR 4 SHEET 2 OF 4
SR 561 SHEET 2 OF 2

STATE OF OHIO - DEPARTMENT OF TRANSPORTATION
STATE ROUTE SECTIONS ON CONTINUOUS MILEAGE STATIONING

DISTRICT 8
COUNTY HAMILTON
ROUTE IR 75



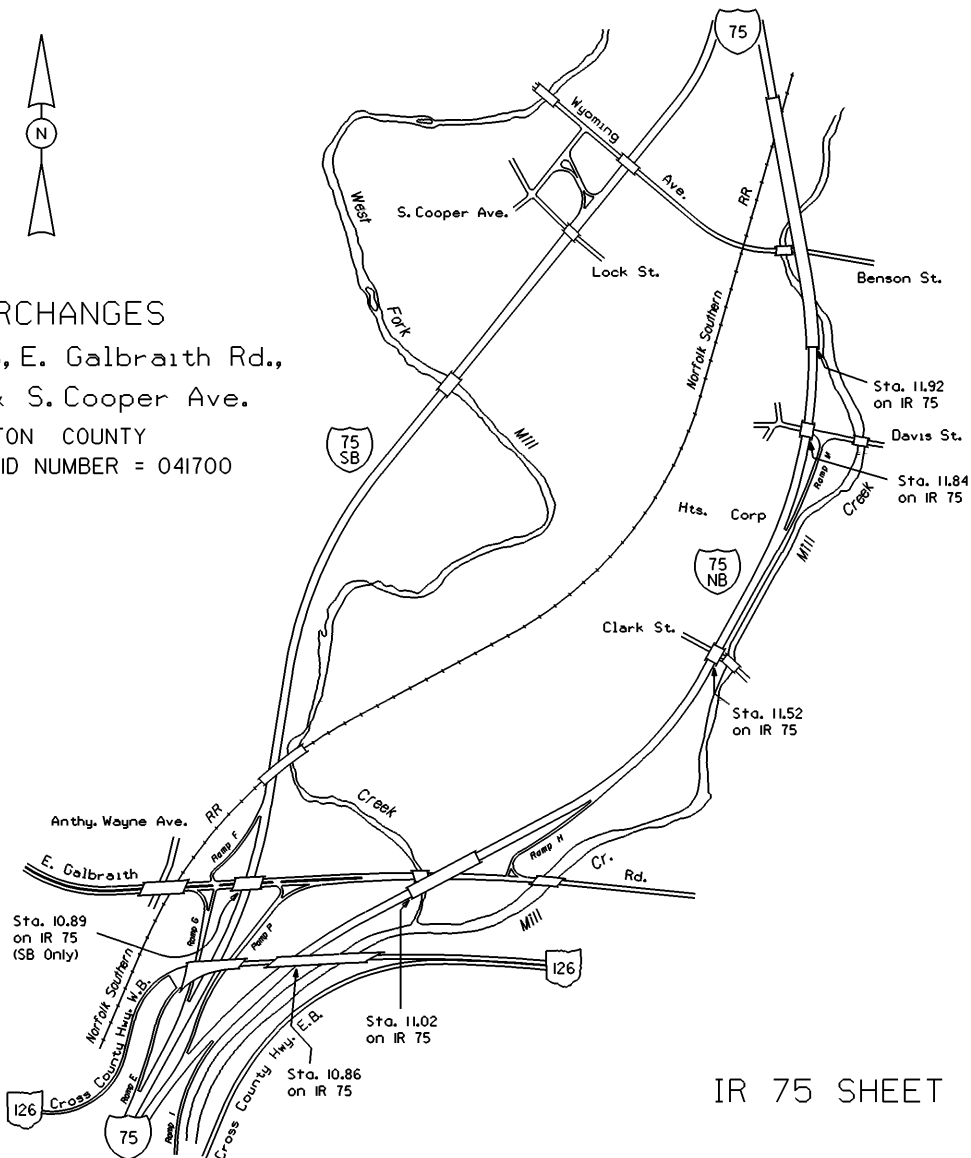
INTERCHANGES
 IR 75, SR 126 &
 E. Galbraith Rd.
 HAMILTON COUNTY
 INTERCHANGE ID NUMBER = 041600



IR 75 SHEET 7 OF 9
 SR 126 SHEET 3 OF 6

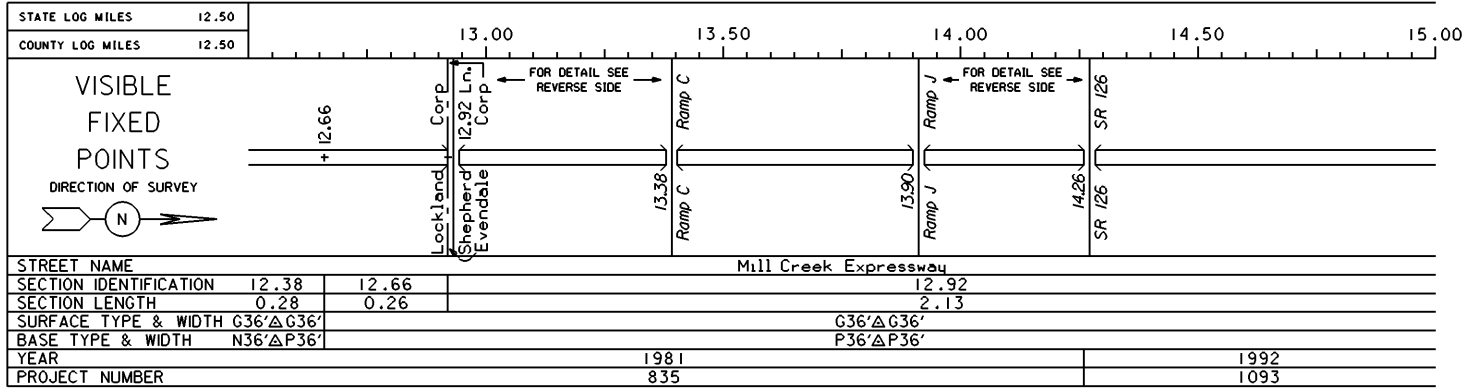


INTERCHANGES
IR 75, SR 126, E. Galbraith Rd.,
Davis St. & S. Cooper Ave.
HAMILTON COUNTY
INTERCHANGE ID NUMBER = 041700

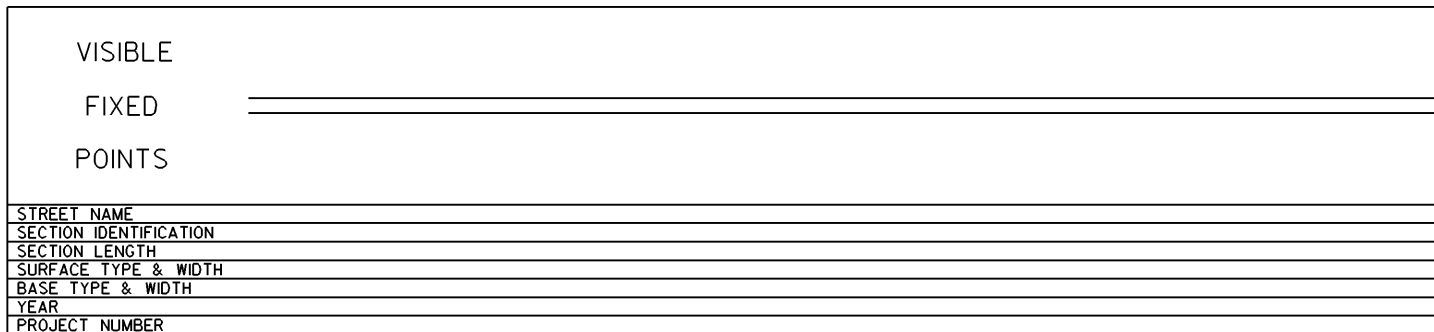
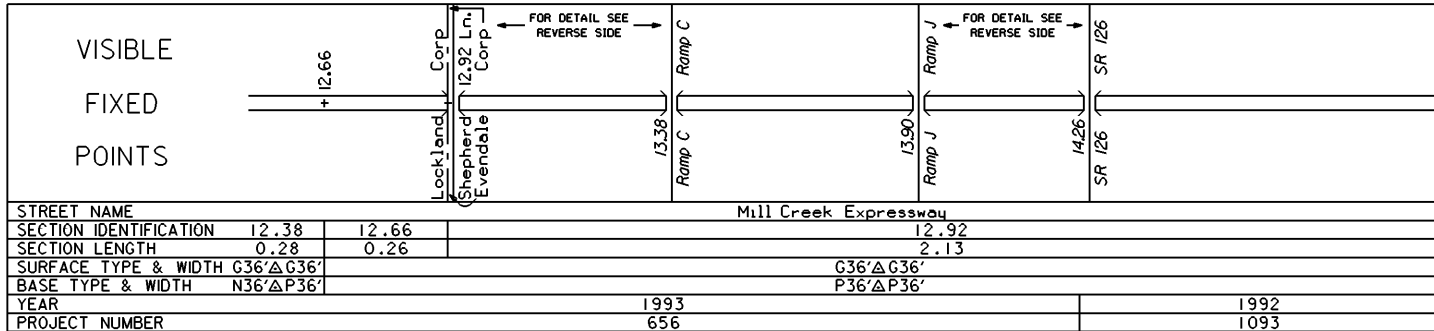


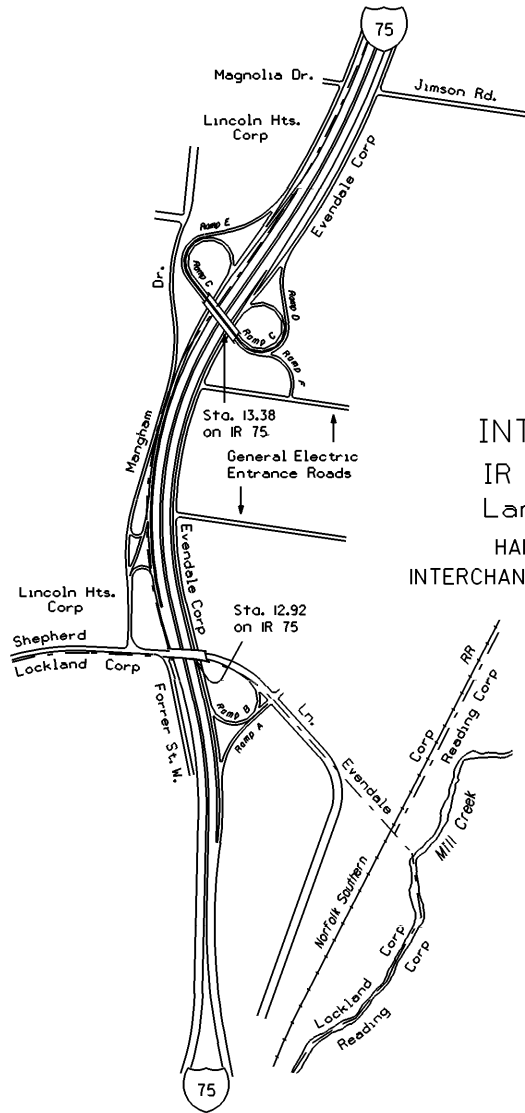
STATE OF OHIO - DEPARTMENT OF TRANSPORTATION
STATE ROUTE SECTIONS ON CONTINUOUS MILEAGE STATIONING

DISTRICT 8
COUNTY HAMILTON
ROUTE IR 75

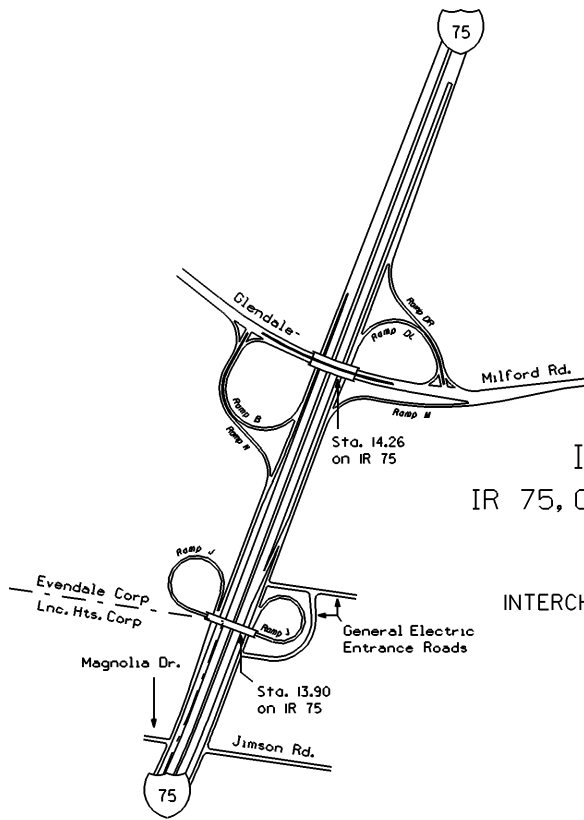


PERPETUATION





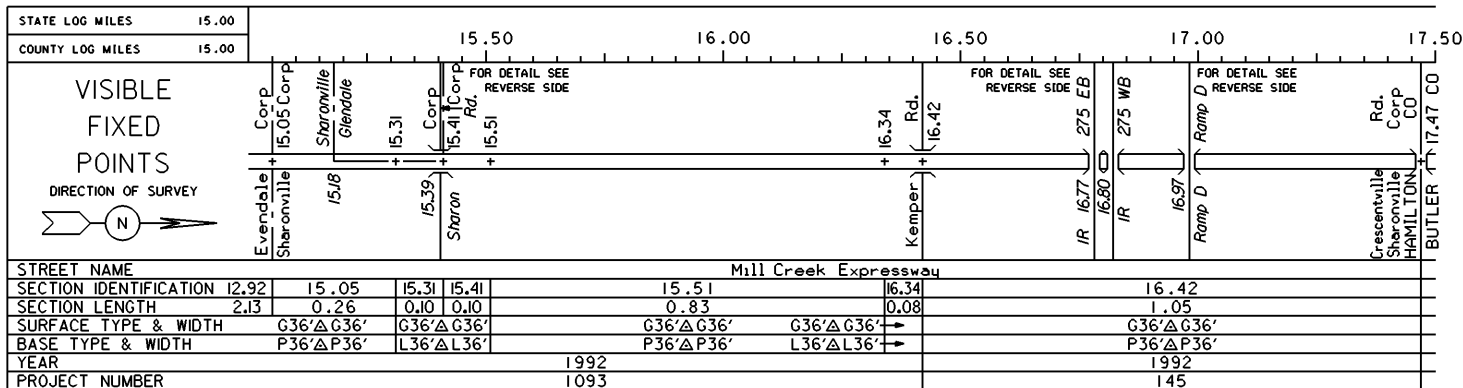
INTERCHANGES
 IR 75, Shepherd
 Lane & Ramp C
 HAMILTON COUNTY
 INTERCHANGE ID NUMBER = 041800



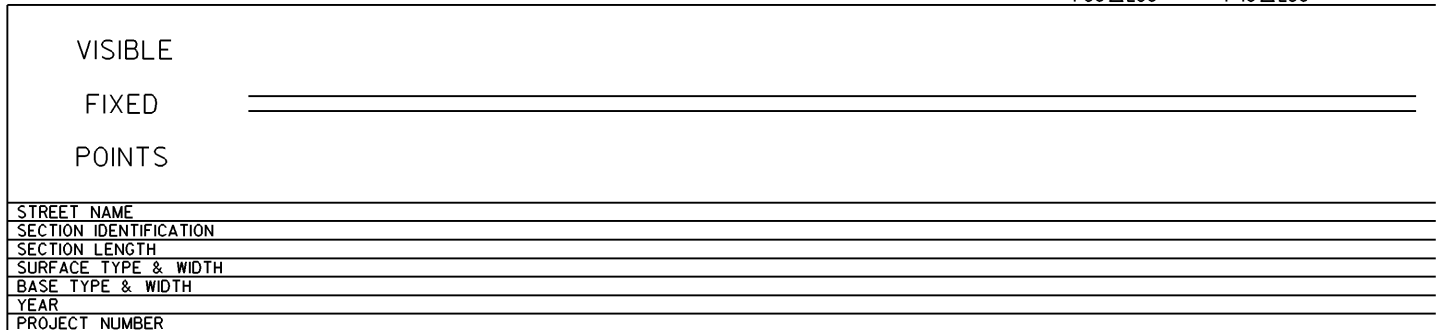
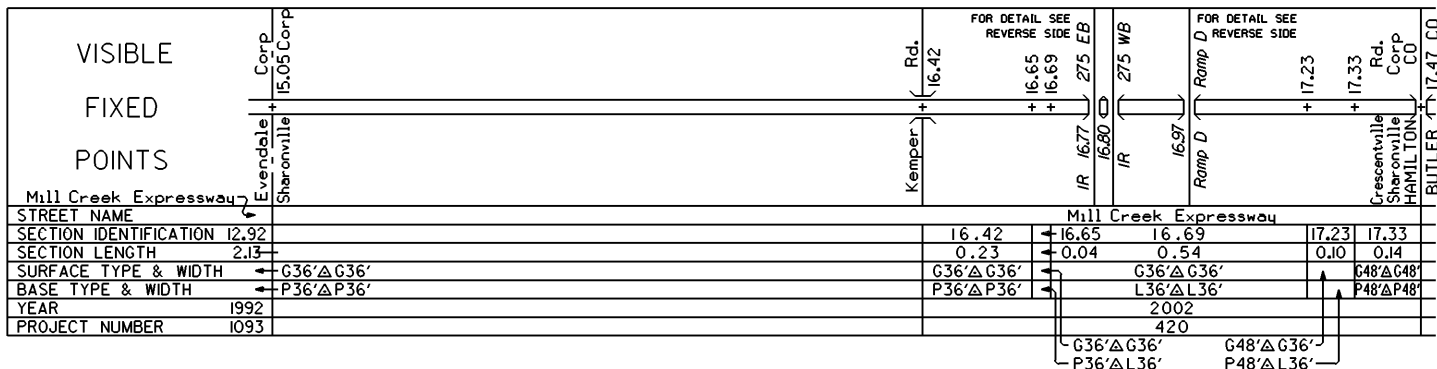
INTERCHANGES
 IR 75, Glendale - Milford Rd
 & Ramp J
 HAMILTON COUNTY
 INTERCHANGE ID NUMBER = 041900

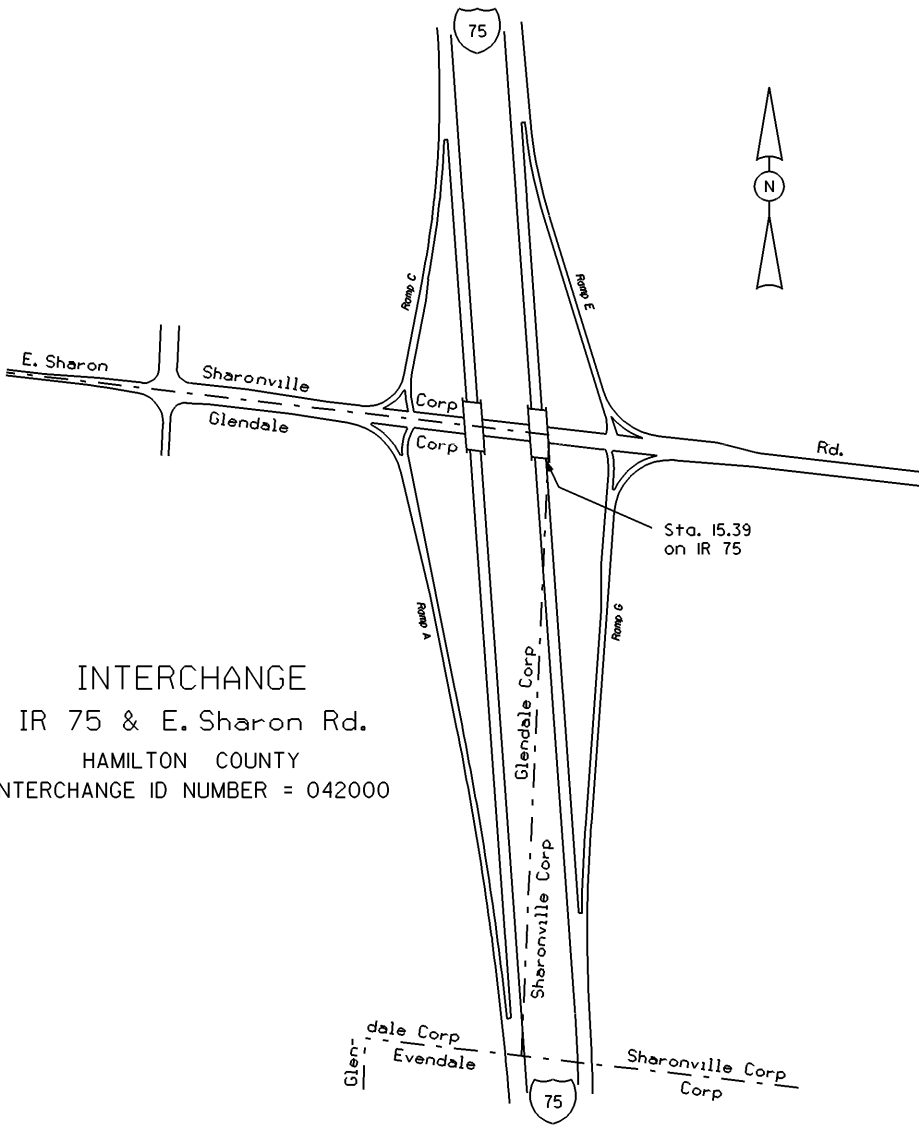
STATE OF OHIO - DEPARTMENT OF TRANSPORTATION
STATE ROUTE SECTIONS ON CONTINUOUS MILEAGE STATIONING

DISTRICT 8
COUNTY HAMILTON
ROUTE IR 75

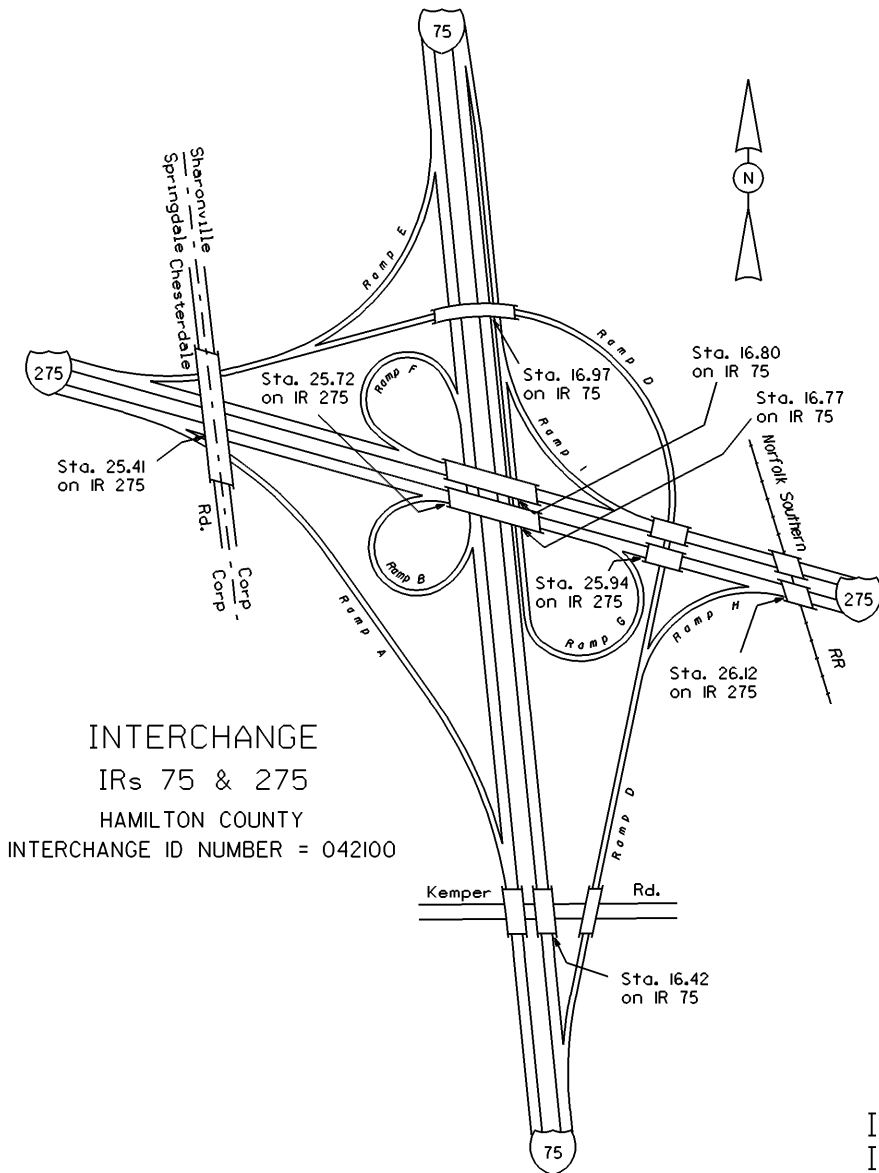


PERPETUATION





INTERCHANGE
 IR 75 & E. Sharon Rd.
 HAMILTON COUNTY
 INTERCHANGE ID NUMBER = 042000



INTERCHANGE
 IRs 75 & 275
 HAMILTON COUNTY
 INTERCHANGE ID NUMBER = 042100