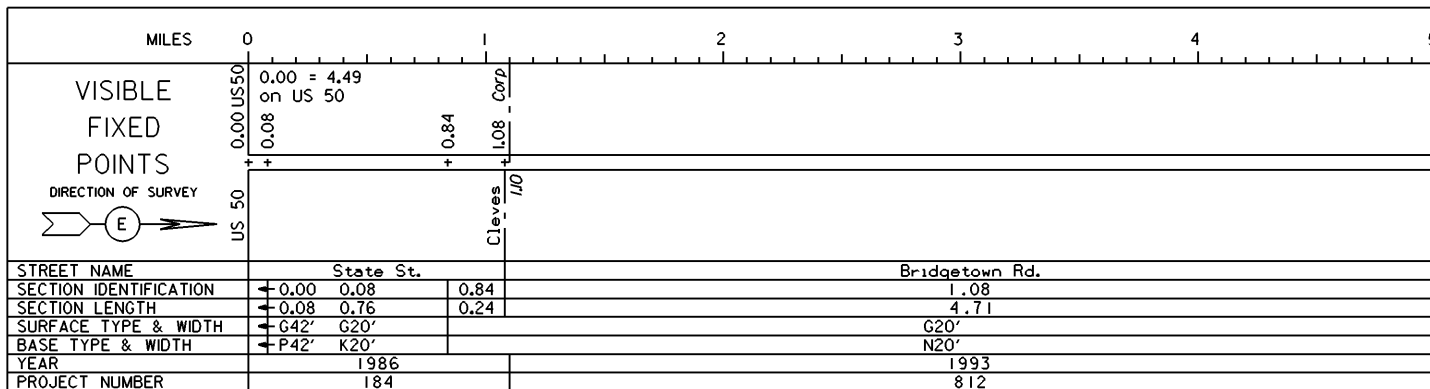
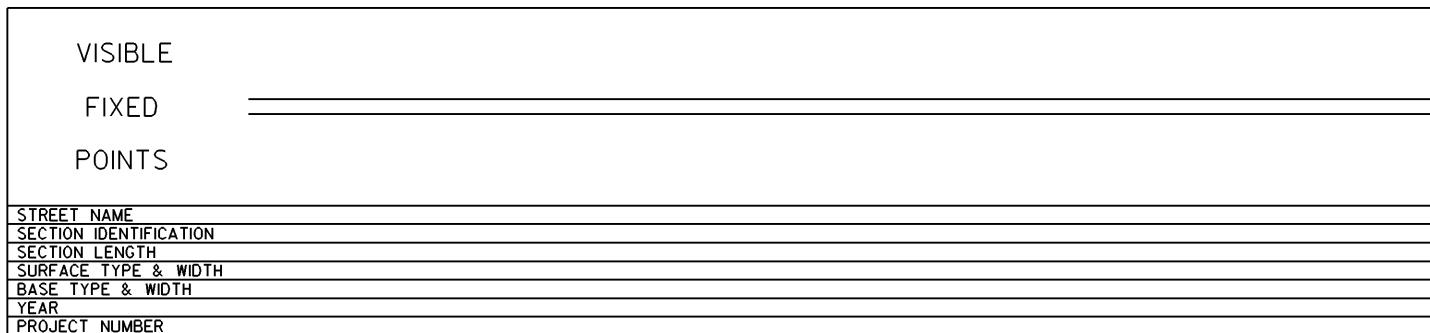
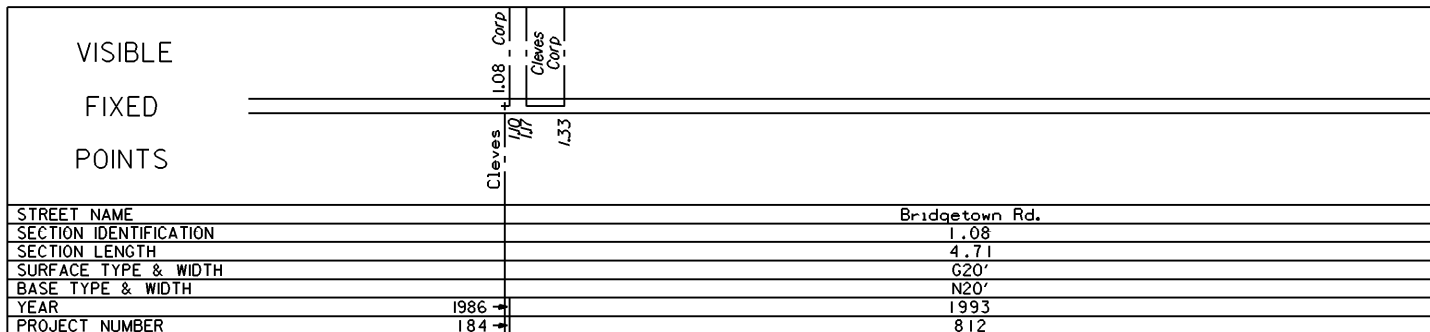


STATE OF OHIO - DEPARTMENT OF TRANSPORTATION
STATE ROUTE SECTIONS ON CONTINUOUS MILEAGE STATIONING

DISTRICT 8
COUNTY HAMILTON
ROUTE SR 264

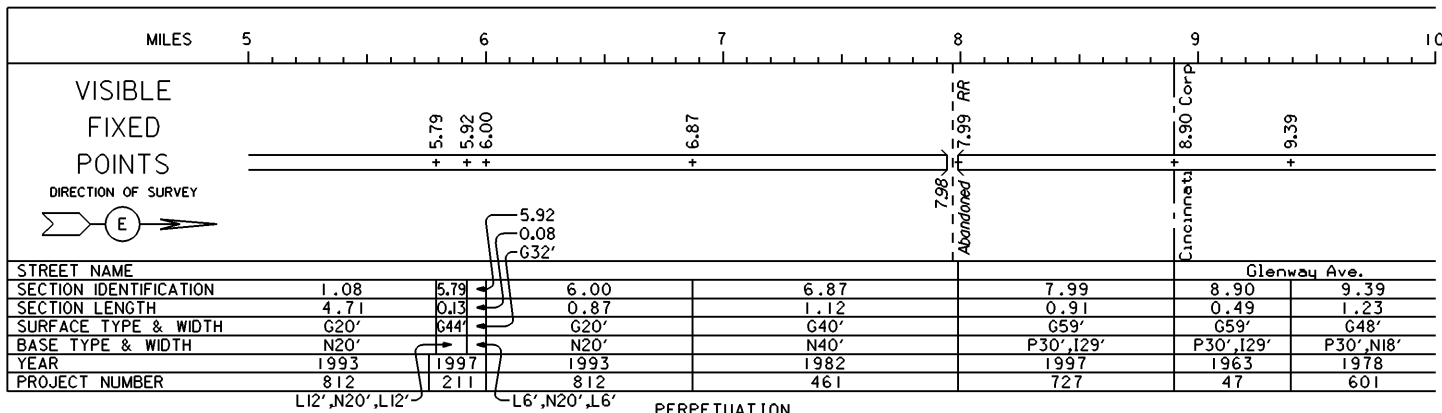


PERPETUATION

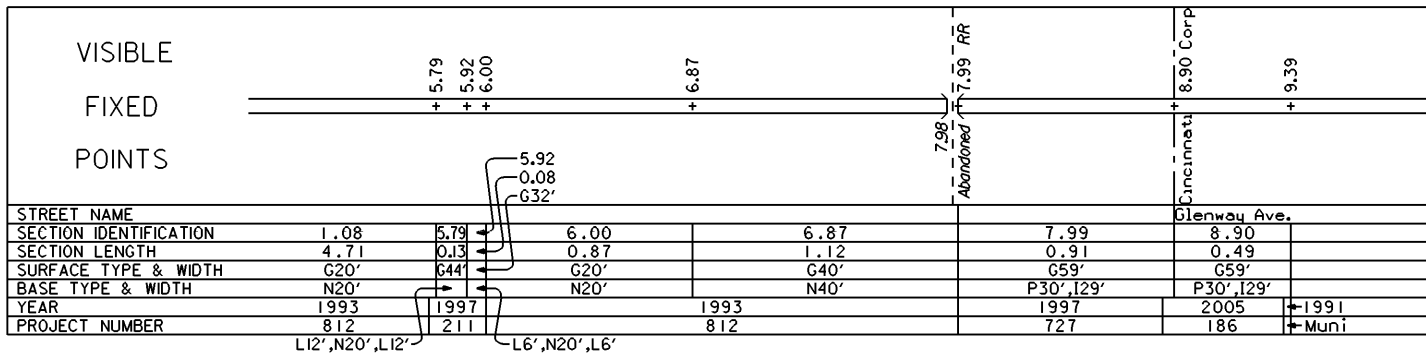


STATE OF OHIO - DEPARTMENT OF TRANSPORTATION
STATE ROUTE SECTIONS ON CONTINUOUS MILEAGE STATIONING

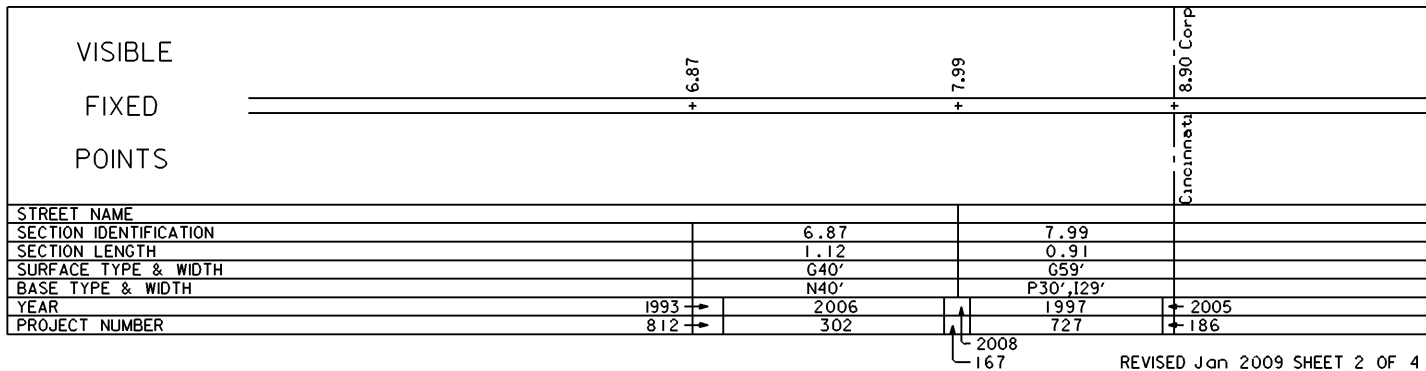
DISTRICT 8
COUNTY HAMILTON
ROUTE SR 264



L12',N20',L12' L6',N20',L6' PERPETUATION



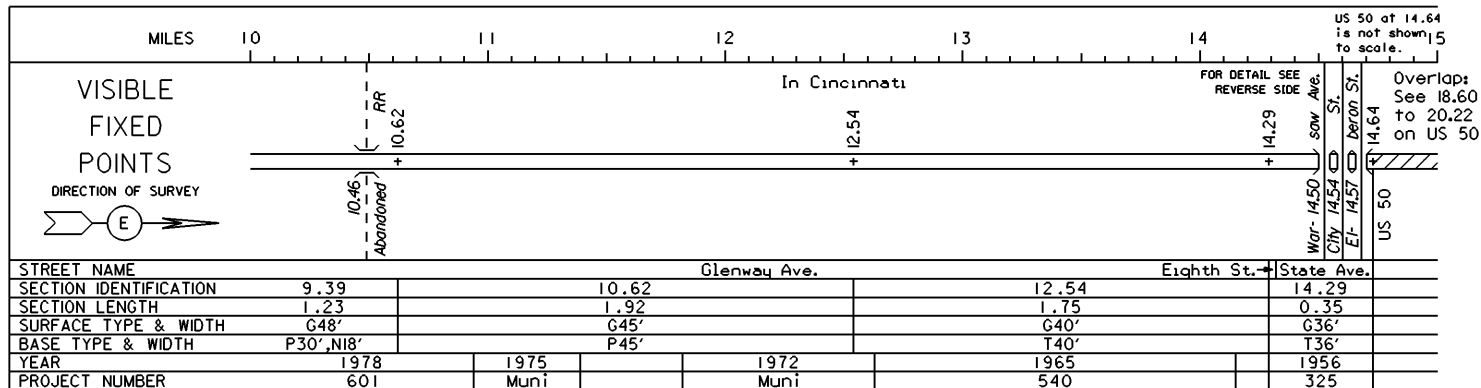
L12',N20',L12' L6',N20',L6'



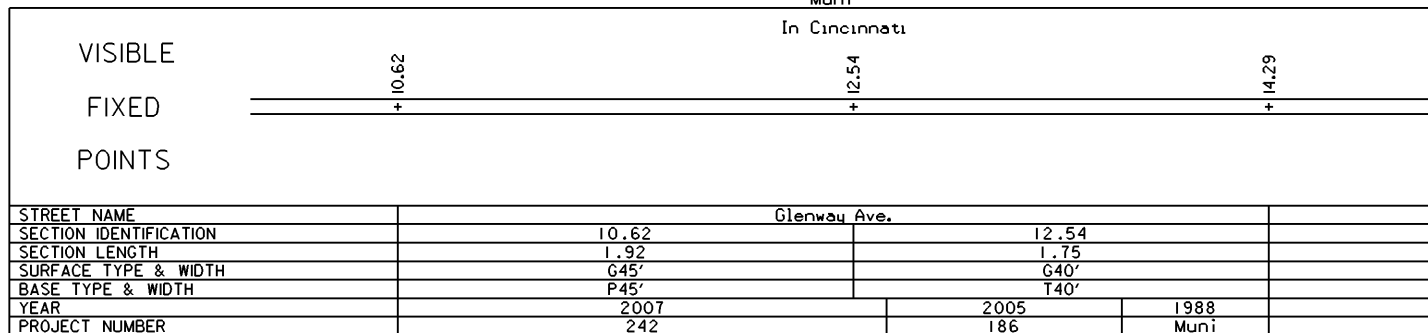
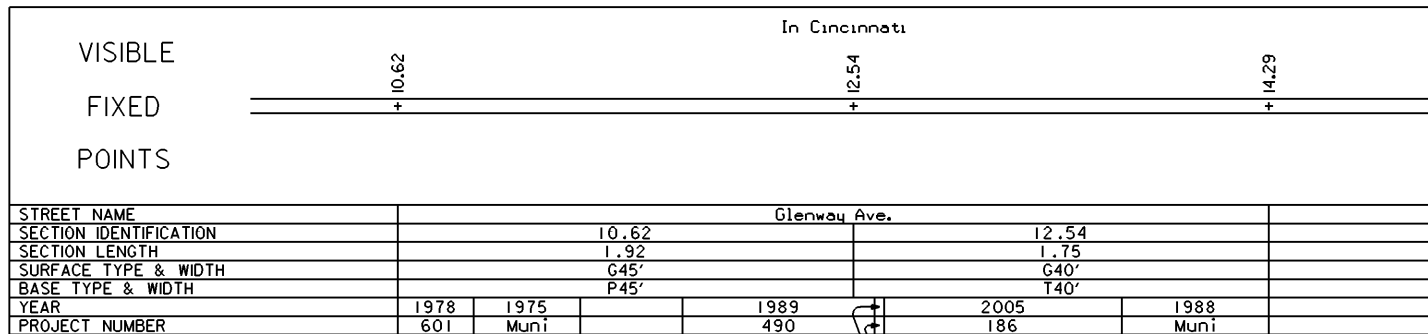
2008
167

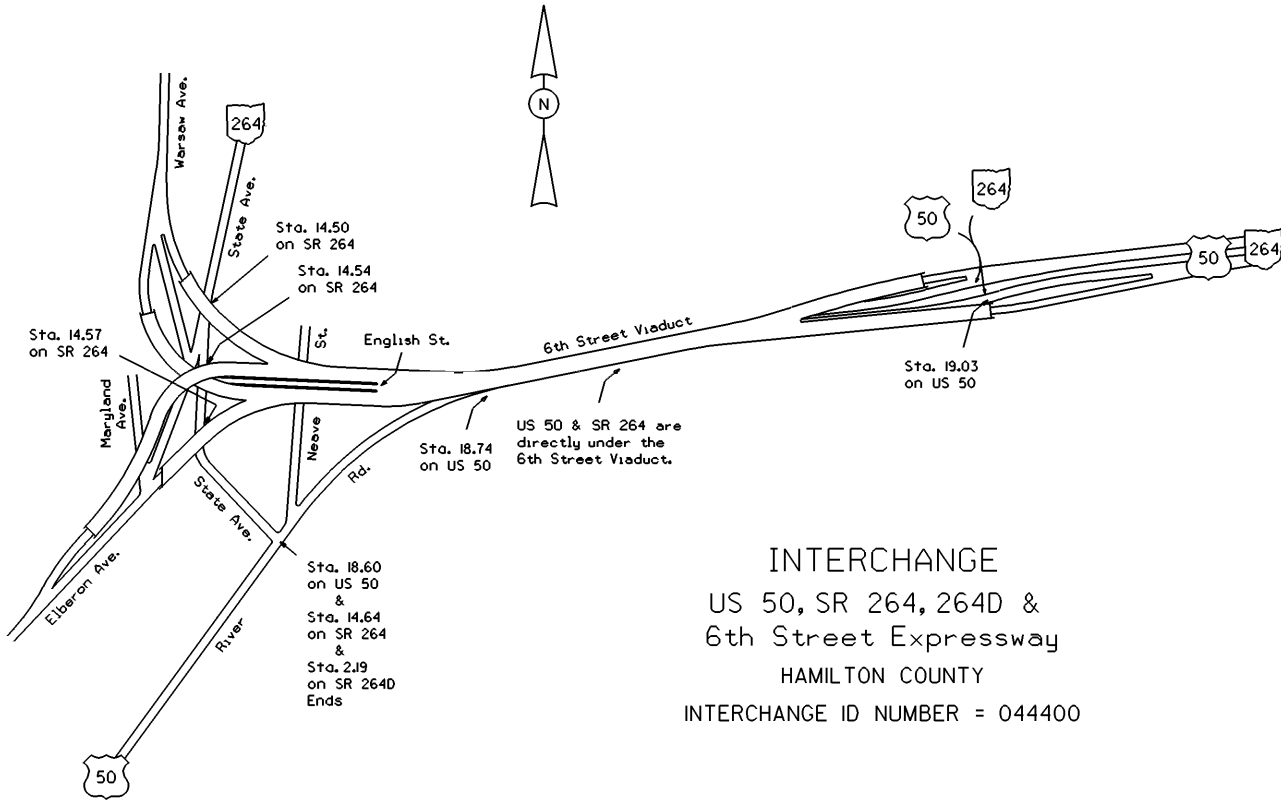
STATE OF OHIO - DEPARTMENT OF TRANSPORTATION
STATE ROUTE SECTIONS ON CONTINUOUS MILEAGE STATIONING

DISTRICT 8
COUNTY HAMILTON
ROUTE SR 264



PERPETUATION



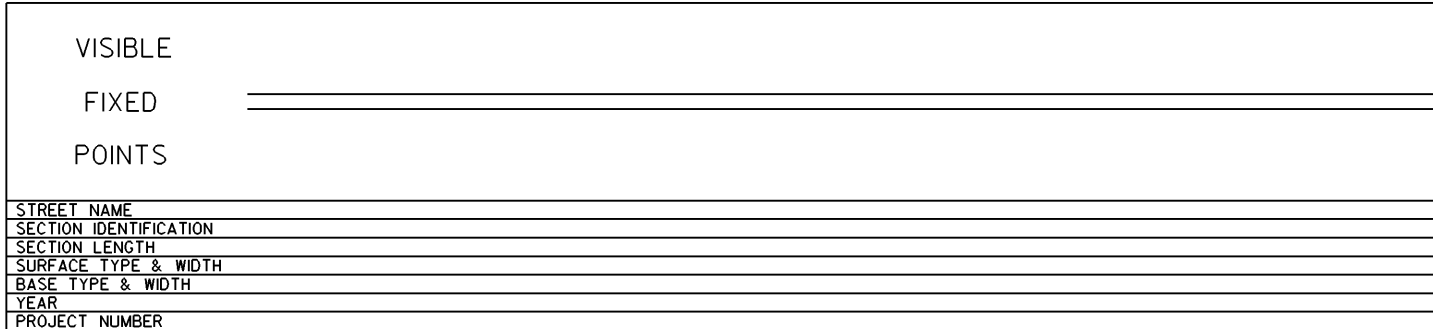
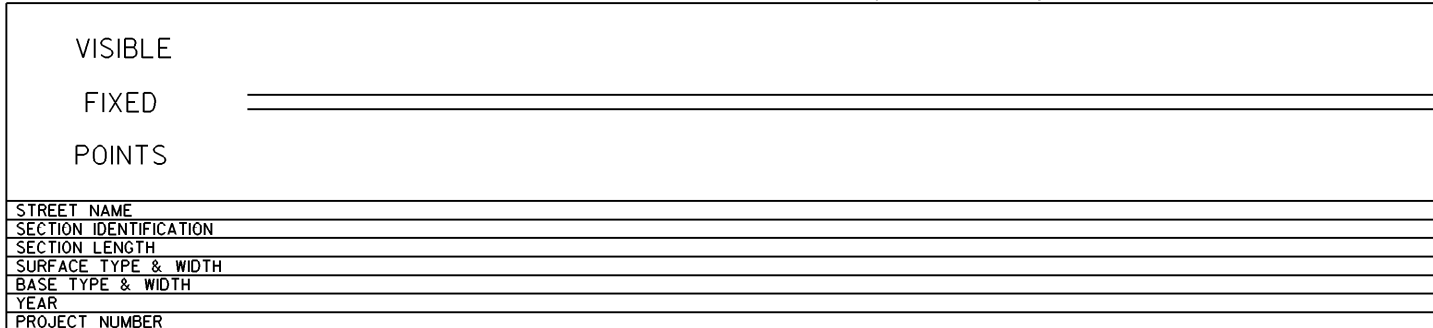
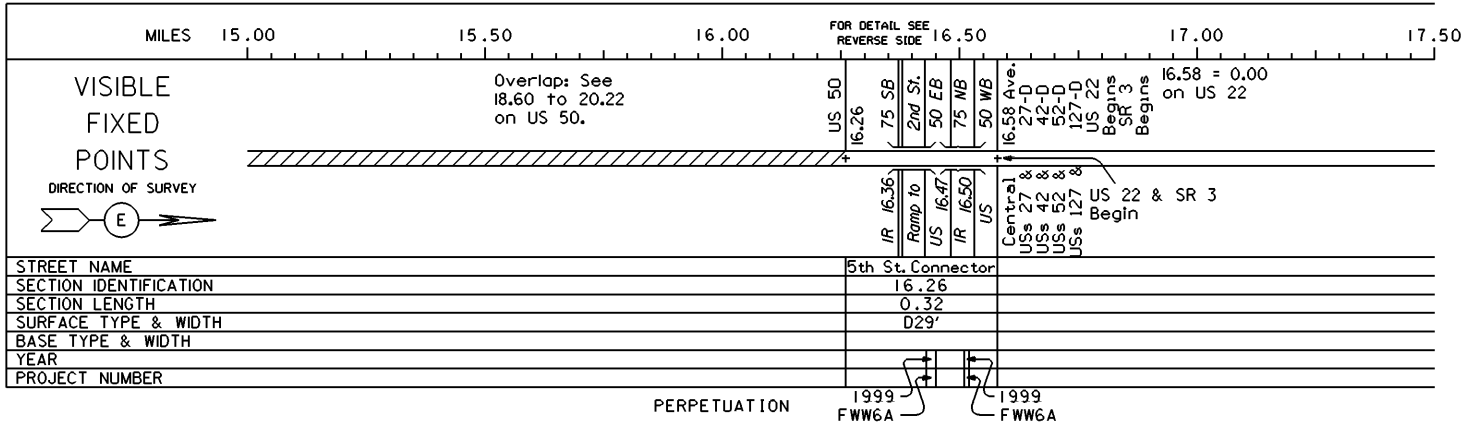


INTERCHANGE
 US 50, SR 264, 264D &
 6th Street Expressway
 HAMILTON COUNTY
 INTERCHANGE ID NUMBER = 044400

STATE OF OHIO - DEPARTMENT OF TRANSPORTATION

STATE ROUTE SECTIONS ON CONTINUOUS MILEAGE STATIONING

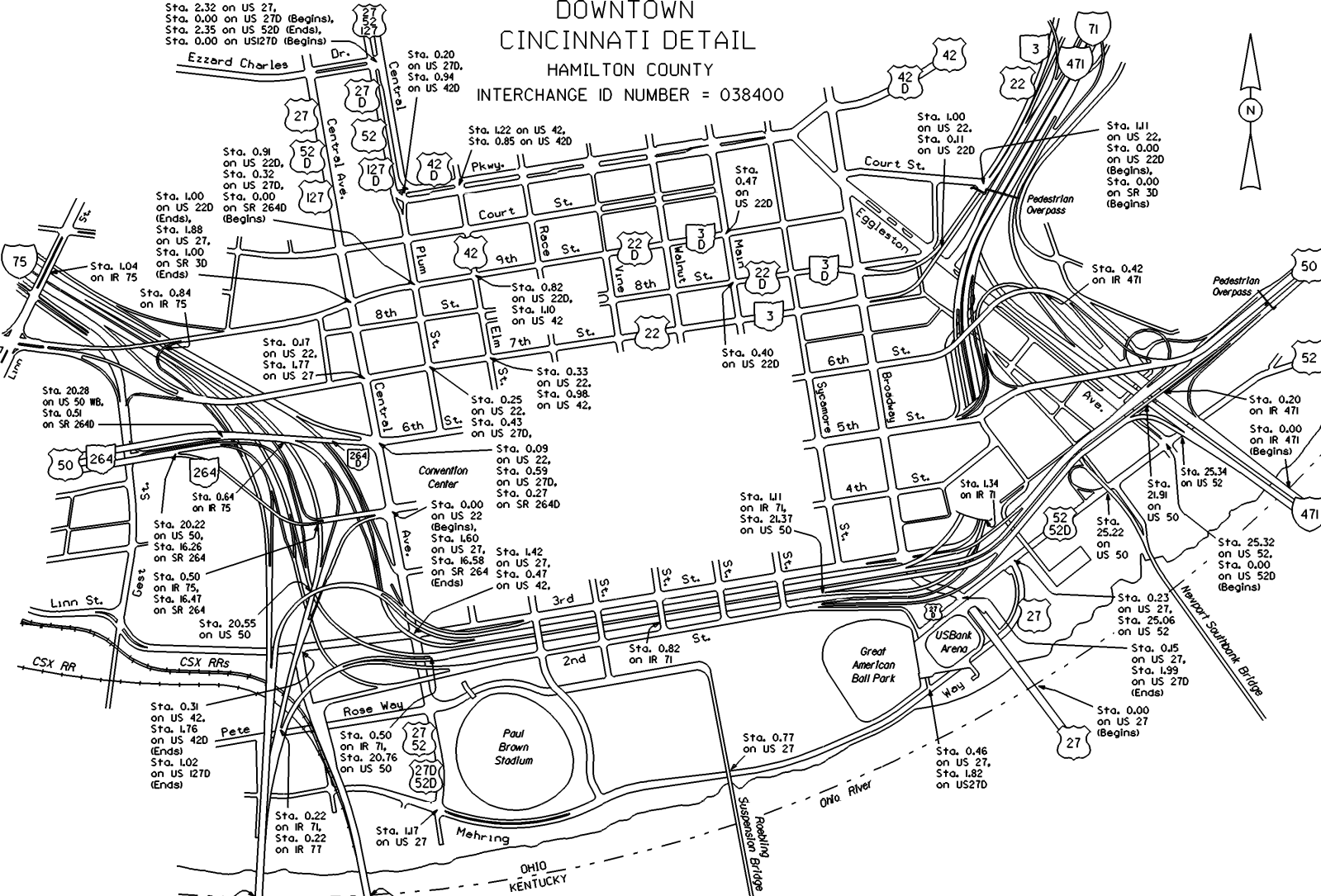
DISTRICT 8
 COUNTY HAMILTON
 ROUTE SR 264



DOWNTOWN CINCINNATI DETAIL

HAMILTON COUNTY

INTERCHANGE ID NUMBER = 038400



Sta. 2.32 on US 27,
Sta. 0.00 on US 27D (Begins),
Sta. 2.35 on US 520 (Ends),
Sta. 0.00 on US1270 (Begins)

Sta. 0.20
on US 27D,
Sta. 0.94
on US 420

Sta. 1.22 on US 42,
Sta. 0.85 on US 420

Sta. 1.00
on US 22,
Sta. 0.11
on US 22D

Sta. 1.11
on US 22,
Sta. 0.00
on US 22D
(Begins),
Sta. 0.00
on SR 30
(Begins)

Sta. 0.91
on US 22D,
Sta. 0.32
on US 27D,
Sta. 0.00
on SR 264D
(Begins)

Sta. 0.47
on US 22D

Sta. 1.00
on US 22D
(Ends),
Sta. 1.88
on US 27,
Sta. 1.00
on SR 3D
(Ends)

Sta. 0.82
on US 22D,
Sta. 1.10
on US 42

Sta. 0.42
on IR 471

Sta. 0.84
on IR 75

Sta. 0.17
on US 22,
Sta. 1.71
on US 27

Sta. 0.40
on US 22D

Sta. 0.33
on US 22,
Sta. 0.98
on US 42,
Sta. 0.25
on US 22,
Sta. 0.43
on US 27D,

Sta. 0.20
on IR 471
Sta. 0.00
on IR 471
(Begins)

Sta. 0.09
on US 22,
Sta. 0.59
on US 27D,
Sta. 0.27
on SR 264D

Sta. 1.11
on IR 7L
Sta. 2.137
on US 50

Sta. 25.34
on US 52
Sta. 2.91
on US 50

Sta. 20.22
on US 50,
Sta. 16.26
on SR 264
Sta. 0.50
on IR 75,
Sta. 16.47
on SR 264

Sta. 1.60
on US 27,
Sta. 16.58
on SR 264
(Ends)
Sta. 1.42
on US 27,
Sta. 0.47
on US 42,

Sta. 25.22
on US 50
Sta. 0.23
on US 27,
Sta. 25.06
on US 52

Sta. 0.31
on US 42,
Sta. 1.76
on US 42D
(Ends)
Sta. 1.02
on US 127D
(Ends)

Sta. 0.50
on IR 7L,
Sta. 20.76
on US 50

Sta. 0.77
on US 27

Sta. 0.15
on US 27,
Sta. 1.99
on US 27D
(Ends)

Sta. 0.22
on IR 7L,
Sta. 0.22
on IR 77

Sta. 1.17
on US 27

Sta. 0.46
on US 27,
Sta. 1.82
on US27D

Sta. 0.00
on US 27
(Begins)

Sta. 0.00
on IR 71
(Begins),
Sta. 0.00
on IR 75
(Begins)

Sta. 0.00
on US 42
(Begins),
Sta. 0.00
on US 127
(Begins)

- | | |
|------------------------|-------------------------|
| IR 71 SHEET 1 & 2 OF 9 | US 42 SHEET 1 OF 6 |
| IR 75 SHEET 1 & 2 OF 9 | US 42D SHEET 1 OF 1 |
| IR 471 SHEET 1 OF 1 | US 50 SHEET 6 & 7 OF 13 |
| US 22 SHEET 1 OF 5 | US 52 SHEET 4 OF 7 |
| US 22D SHEET 1 OF 1 | SR 264 SHEET 4 OF 4 |
| US 27 SHEET 1 OF 5 | SR 264D SHEET 1 OF 1 |
| US 27D SHEET 1 OF 1 | |