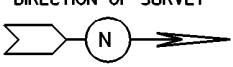
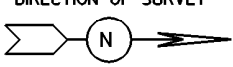


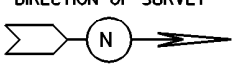
STATE OF OHIO - DEPARTMENT OF TRANSPORTATION  
STATE ROUTE SECTIONS ON CONTINUOUS MILEAGE STATIONING

DISTRICT 11  
COUNTY HOLMES  
ROUTE SR 557

MILES	0	1	2	3	4	5
VISIBLE FIXED POINTS  DIRECTION OF SURVEY 	SR 643	0.00 = 4.15 on SR 643.				
	SR 643	0.00				
STREET NAME						
SECTION IDENTIFICATION		0.00				
SECTION LENGTH		10.23				
SURFACE TYPE & WIDTH		G20'				
BASE TYPE & WIDTH		I20'				
YEAR		1986			1990	
PROJECT NUMBER		836			627	

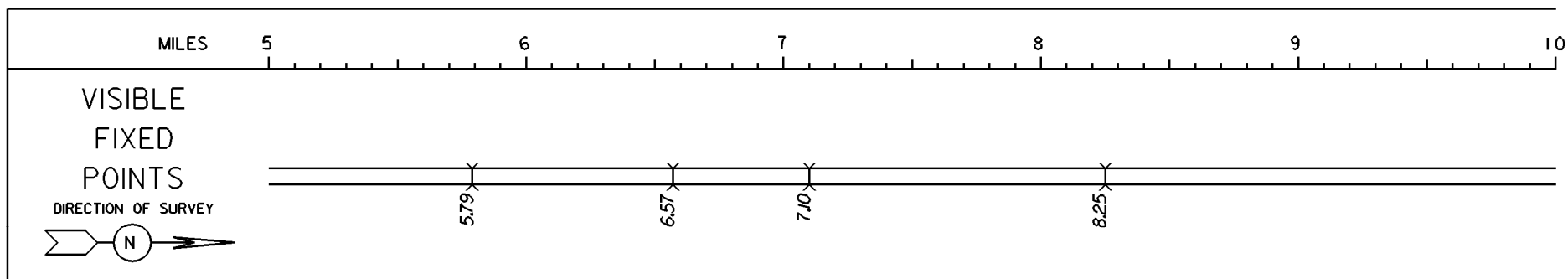
PERPETUATION

VISIBLE FIXED POINTS  DIRECTION OF SURVEY 	SR 643	0.00 = 4.15 on SR 643.				
	SR 643	0.00				
STREET NAME						
SECTION IDENTIFICATION		0.00				
SECTION LENGTH		10.23				
SURFACE TYPE & WIDTH		G20'				
BASE TYPE & WIDTH		I20'				
YEAR		1994				
PROJECT NUMBER		123				

VISIBLE FIXED POINTS  DIRECTION OF SURVEY 						
STREET NAME						
SECTION IDENTIFICATION						
SECTION LENGTH						
SURFACE TYPE & WIDTH						
BASE TYPE & WIDTH						
YEAR						
PROJECT NUMBER						

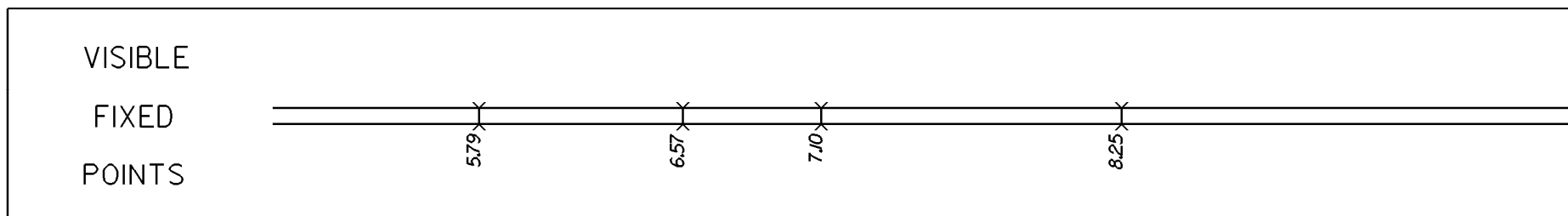
STATE OF OHIO - DEPARTMENT OF TRANSPORTATION  
STATE ROUTE SECTIONS ON CONTINUOUS MILEAGE STATIONING

DISTRICT 11  
COUNTY HOLMES  
ROUTE SR 557

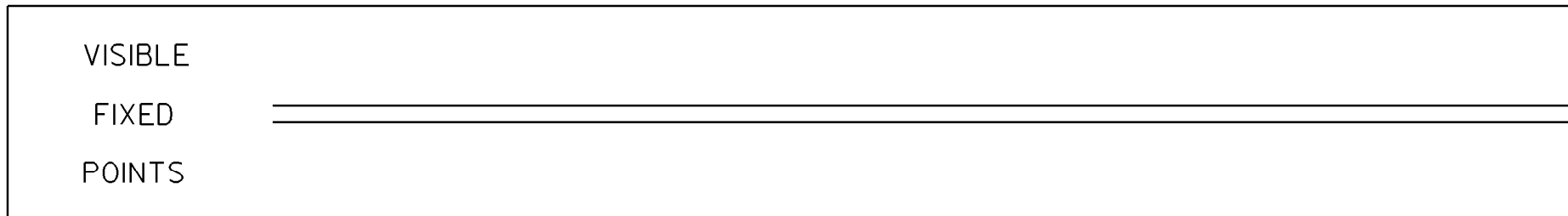


STREET NAME	
SECTION IDENTIFICATION	0.00
SECTION LENGTH	10.23
SURFACE TYPE & WIDTH	G20'
BASE TYPE & WIDTH	120'
YEAR	1990
PROJECT NUMBER	627

PERPETUATION




STREET NAME	
SECTION IDENTIFICATION	0.00
SECTION LENGTH	10.23
SURFACE TYPE & WIDTH	G20'
BASE TYPE & WIDTH	120'
YEAR	1994
PROJECT NUMBER	123



STREET NAME	
SECTION IDENTIFICATION	
SECTION LENGTH	
SURFACE TYPE & WIDTH	
BASE TYPE & WIDTH	
YEAR	
PROJECT NUMBER	

STATE OF OHIO - DEPARTMENT OF TRANSPORTATION  
STATE ROUTE SECTIONS ON CONTINUOUS MILEAGE STATIONING

DISTRICT 11  
COUNTY HOLMES  
ROUTE SR 557

	MILES	10.00	10.20	10.40	10.60	10.80	11.00
VISIBLE FIXED POINTS  DIRECTION OF SURVEY 			US 62 10.23 SR 39	+			
				US 62 SR 39			
10.23 = 25.66 on US 62.							
STREET NAME							
SECTION IDENTIFICATION		0.00					
SECTION LENGTH		10.23					
SURFACE TYPE & WIDTH		G20'					
BASE TYPE & WIDTH		120'					
YEAR		1990					
PROJECT NUMBER		627					

PERPETUATION

VISIBLE FIXED POINTS			US 62 10.23 SR 39	+			
			US 62 SR 39				
10.23 = 24.82 on US 62.							
STREET NAME							
SECTION IDENTIFICATION		0.00					
SECTION LENGTH		10.23					
SURFACE TYPE & WIDTH		G20'					
BASE TYPE & WIDTH		120'					
YEAR		1994					
PROJECT NUMBER		123					

VISIBLE FIXED POINTS							
STREET NAME							
SECTION IDENTIFICATION							
SECTION LENGTH							
SURFACE TYPE & WIDTH							
BASE TYPE & WIDTH							
YEAR							
PROJECT NUMBER							