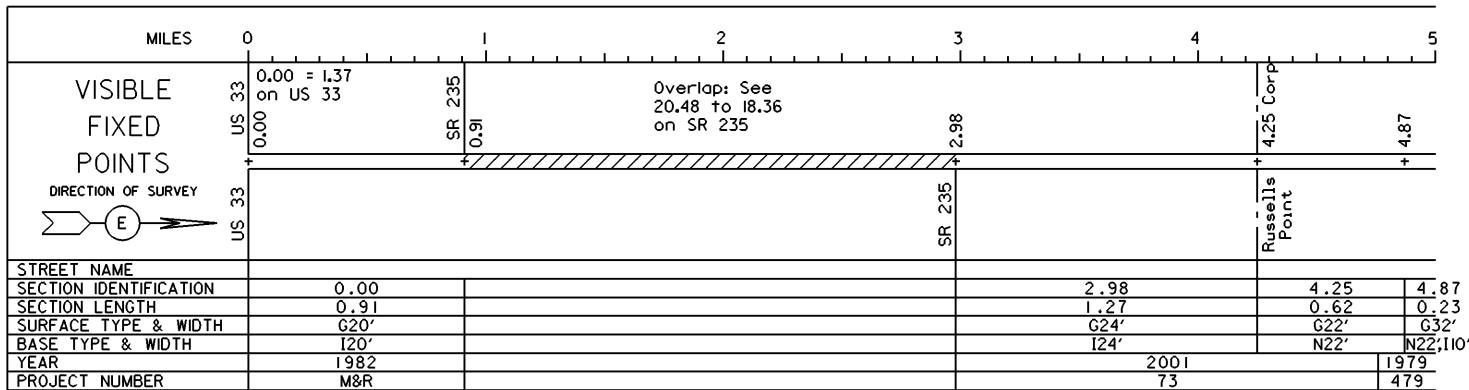
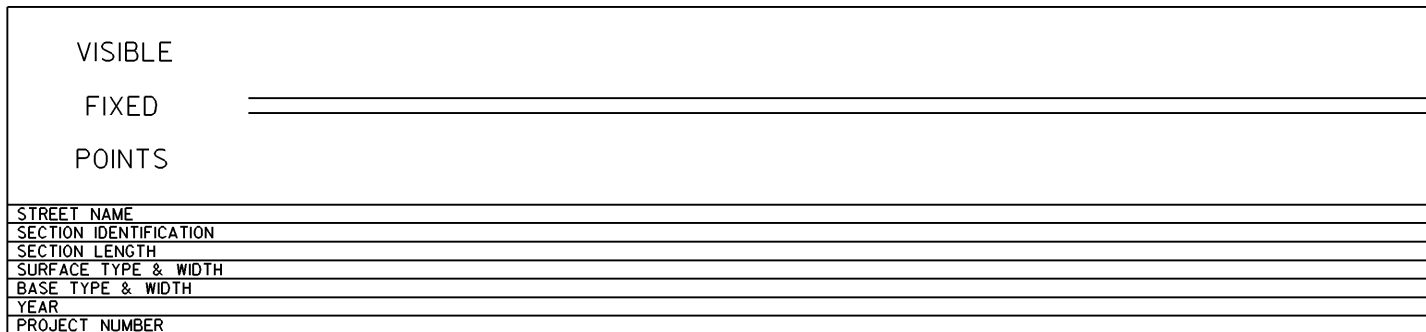
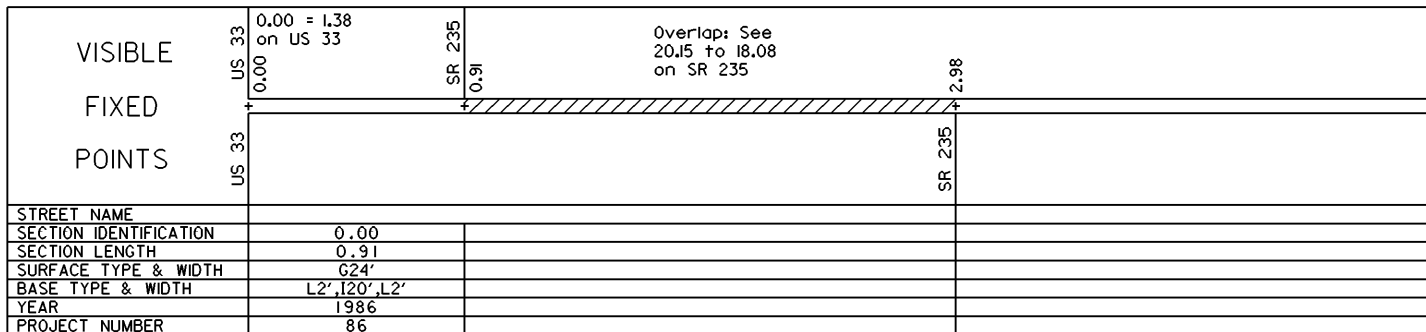


STATE OF OHIO - DEPARTMENT OF TRANSPORTATION  
STATE ROUTE SECTIONS ON CONTINUOUS MILEAGE STATIONING

DISTRICT 7  
COUNTY LOGAN  
ROUTE SR 366

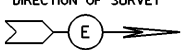


PERPETUATION



STATE OF OHIO - DEPARTMENT OF TRANSPORTATION  
STATE ROUTE SECTIONS ON CONTINUOUS MILEAGE STATIONING

DISTRICT 7  
COUNTY LOGAN  
ROUTE SR 366

MILES	5	6	7	8	9	10
<b>VISIBLE FIXED POINTS</b>  DIRECTION OF SURVEY 	SR 708 5.10 Russells Point	Corp 5.30	5.88	SR 366 Begins 7.08	SR 366-D Ends 9.40	SR 117 9.78 SR 117 9.78 = 4.81 on SR 117
	SR 708	Russells Point	5.98			SR 117
STREET NAME						
SECTION IDENTIFICATION	4.87	5.10	5.30	5.88		
SECTION LENGTH	0.23	0.20	0.58	3.90		
SURFACE TYPE & WIDTH	G32'		G20'	G24'		
BASE TYPE & WIDTH	N22',110'		N20'	N20',14'		
YEAR	1979	1997	1991	1991		
PROJECT NUMBER	479	612		960		

PERPETUATION

VISIBLE  
FIXED  
POINTS

=====

STREET NAME	
SECTION IDENTIFICATION	
SECTION LENGTH	
SURFACE TYPE & WIDTH	
BASE TYPE & WIDTH	
YEAR	
PROJECT NUMBER	

VISIBLE  
FIXED  
POINTS

=====

STREET NAME	
SECTION IDENTIFICATION	
SECTION LENGTH	
SURFACE TYPE & WIDTH	
BASE TYPE & WIDTH	
YEAR	
PROJECT NUMBER	