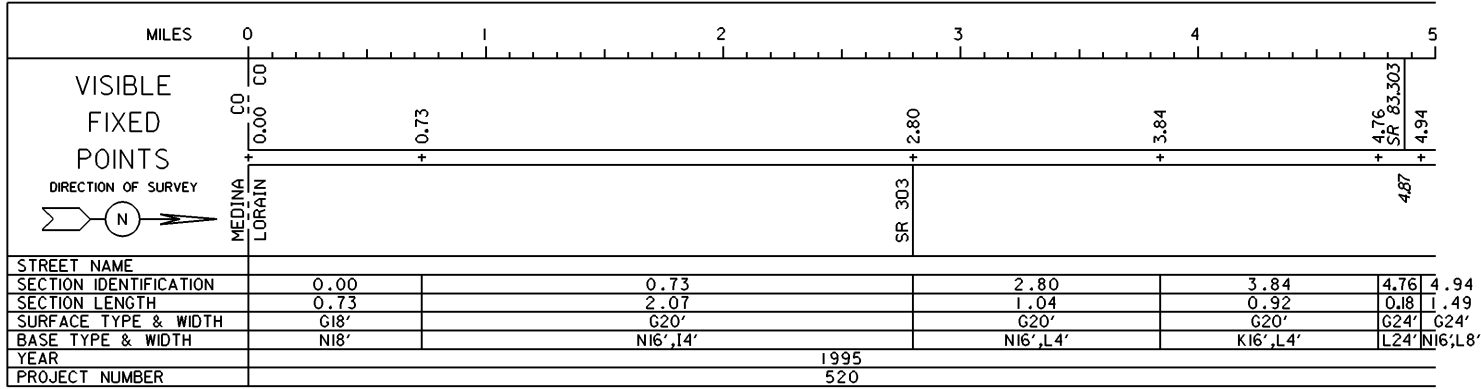


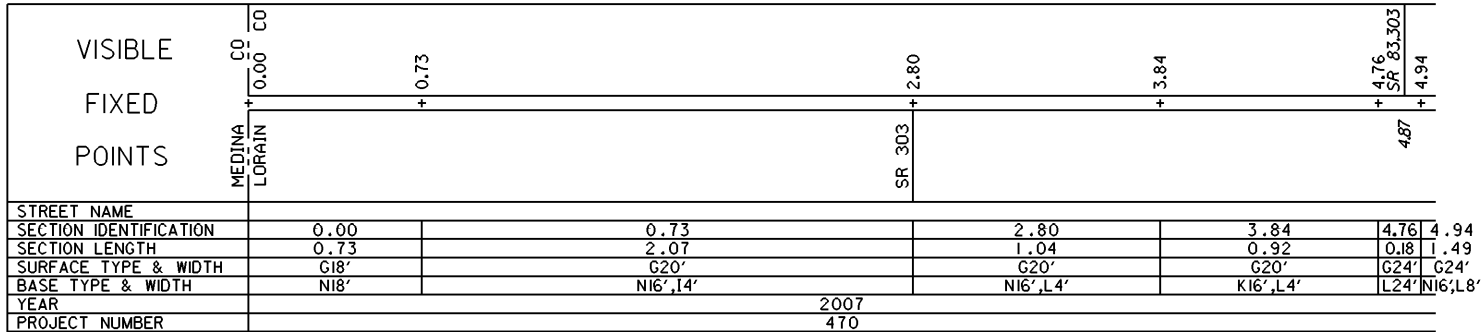
STATE OF OHIO - DEPARTMENT OF TRANSPORTATION

STATE ROUTE SECTIONS ON CONTINUOUS MILEAGE STATIONING

DISTRICT	3
COUNTY	LORAIN
ROUTE	SR 57



PERPETUATION

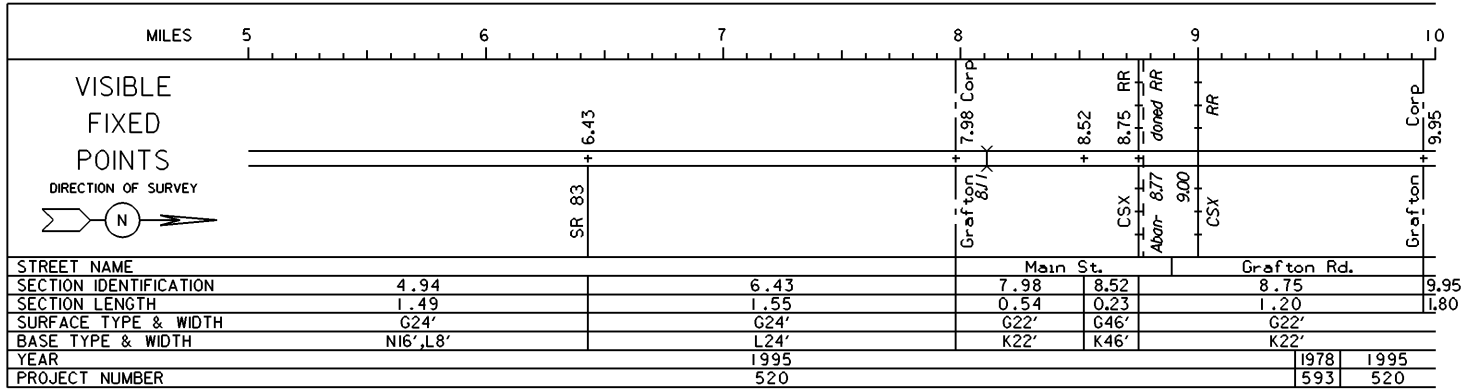


VISIBLE	
FIXED	
POINTS	
STREET NAME	
SECTION IDENTIFICATION	
SECTION LENGTH	
SURFACE TYPE & WIDTH	
BASE TYPE & WIDTH	
YEAR	
PROJECT NUMBER	

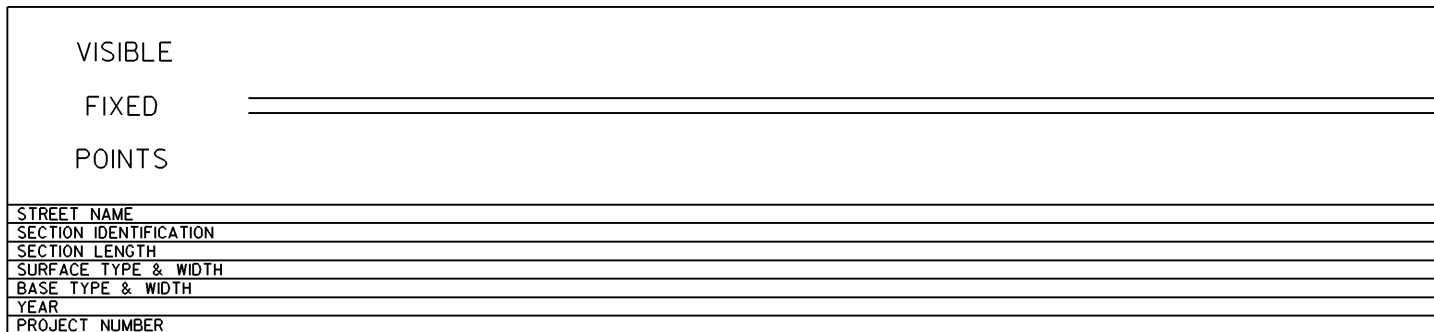
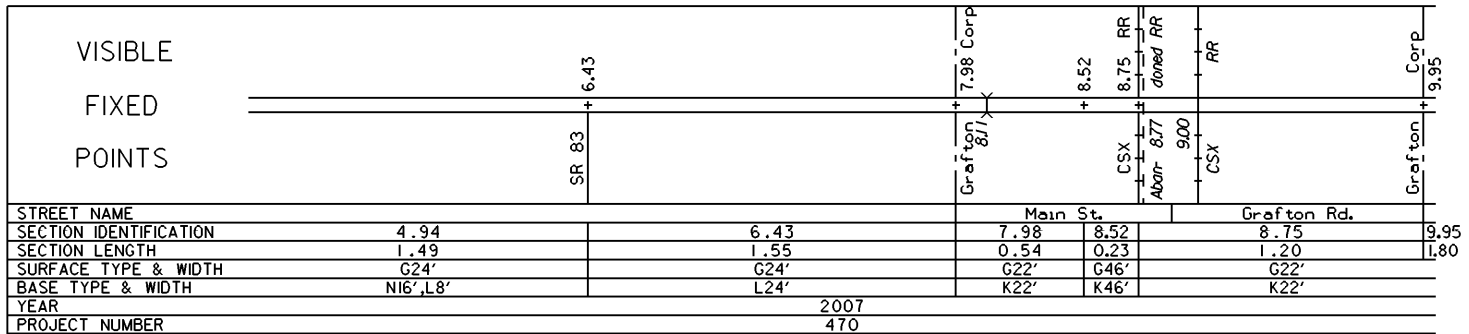
STATE OF OHIO - DEPARTMENT OF TRANSPORTATION

STATE ROUTE SECTIONS ON CONTINUOUS MILEAGE STATIONING

DISTRICT 3
 COUNTY LORAIN
 ROUTE SR 57

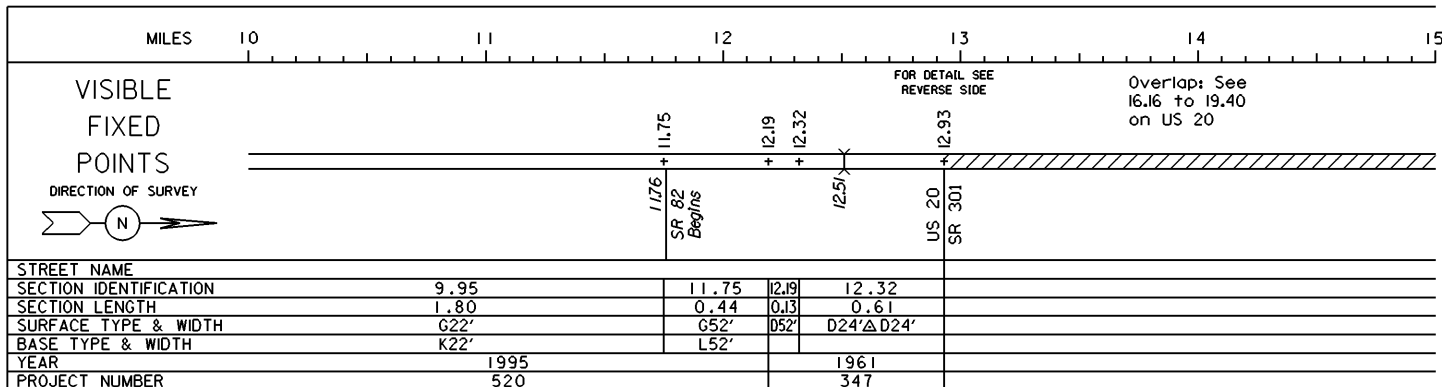


PERPETUATION

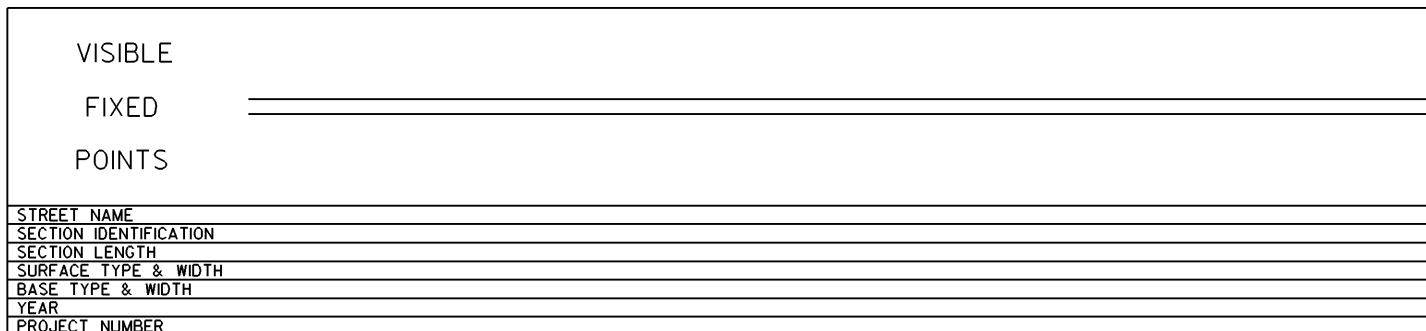
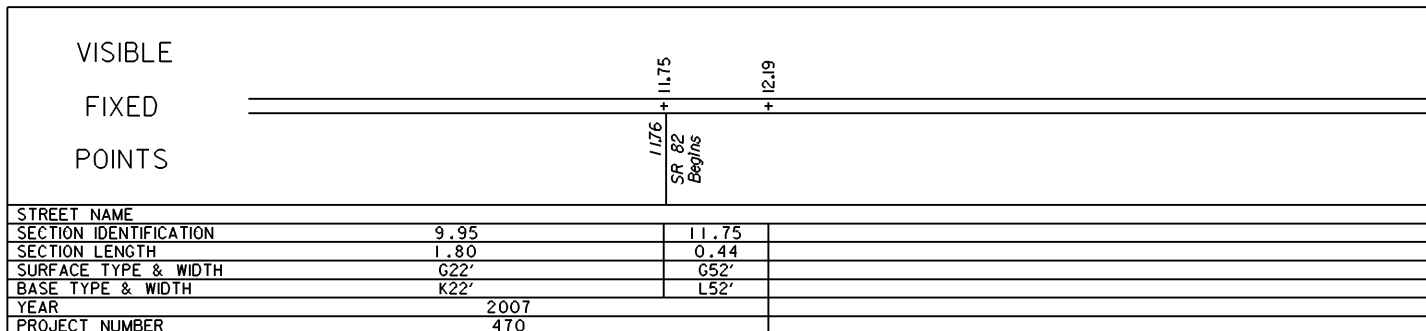


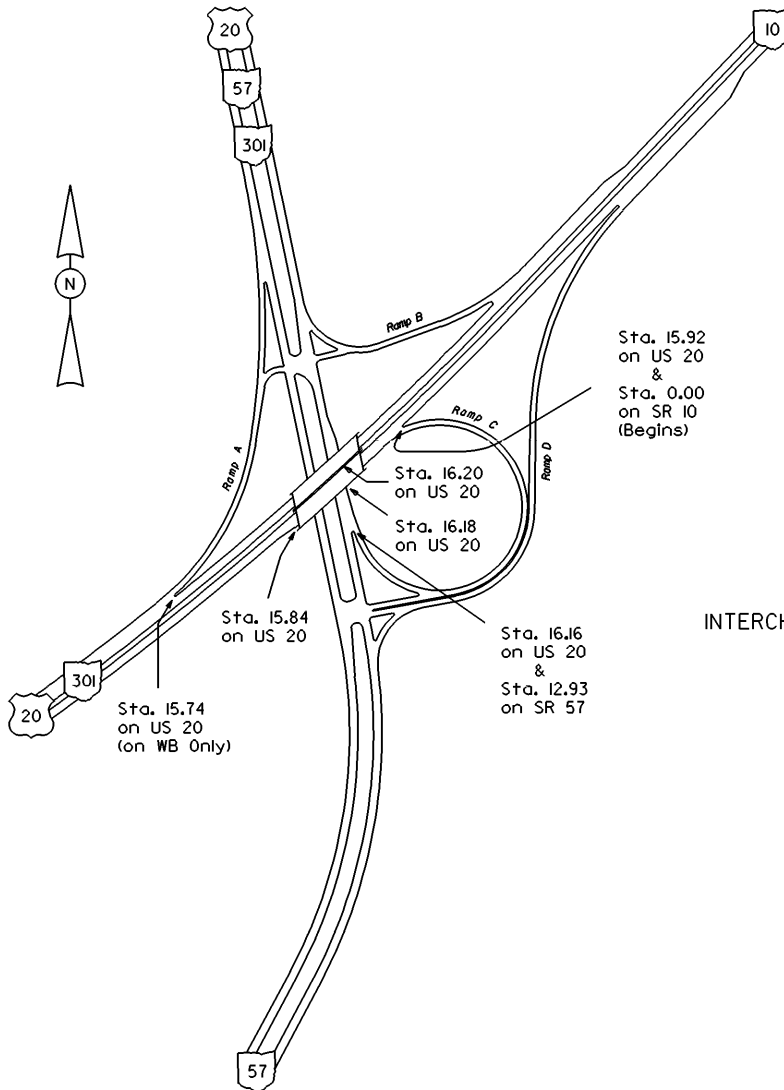
STATE OF OHIO - DEPARTMENT OF TRANSPORTATION
STATE ROUTE SECTIONS ON CONTINUOUS MILEAGE STATIONING

DISTRICT 3
COUNTY LORAIN
ROUTE SR 57



PERPETUATION





Sta. 15.92
on US 20
&
Sta. 0.00
on SR 10
(Begins)

INTERCHANGE

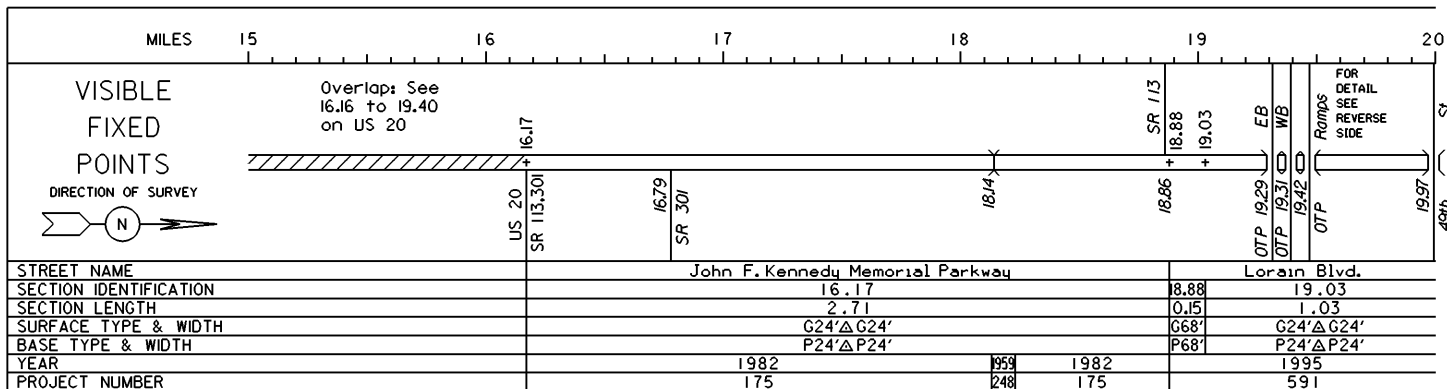
US 20, SRs 10,
57 & 301

LORAIN COUNTY

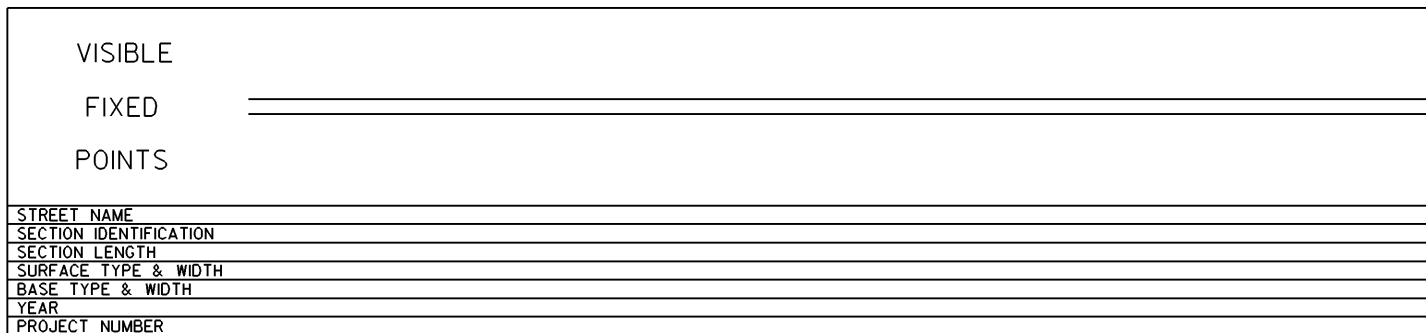
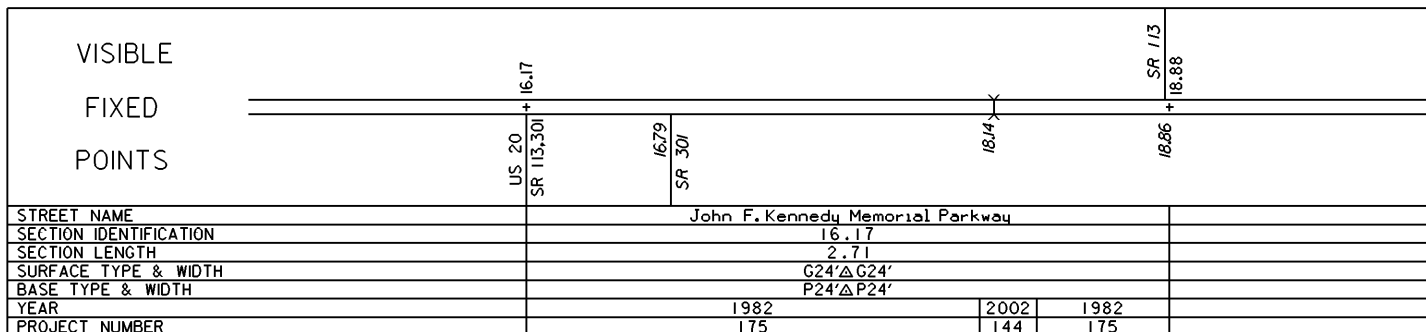
INTERCHANGE ID NUMBER = 058400

STATE OF OHIO - DEPARTMENT OF TRANSPORTATION
STATE ROUTE SECTIONS ON CONTINUOUS MILEAGE STATIONING

DISTRICT 3
COUNTY LORAIN
ROUTE SR 57

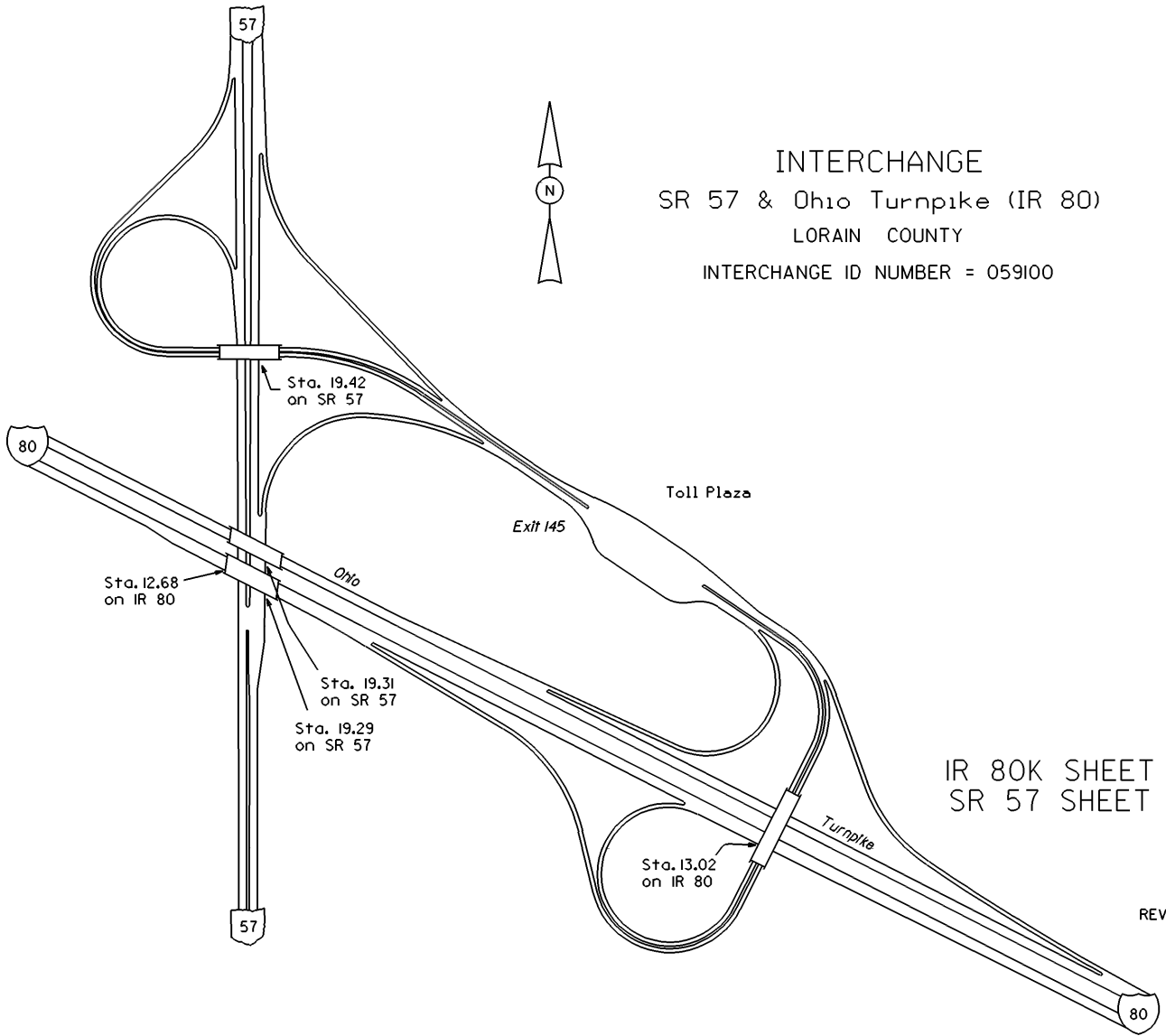


PERPETUATION





INTERCHANGE
SR 57 & Ohio Turnpike (IR 80)
LORAIN COUNTY
INTERCHANGE ID NUMBER = 059100



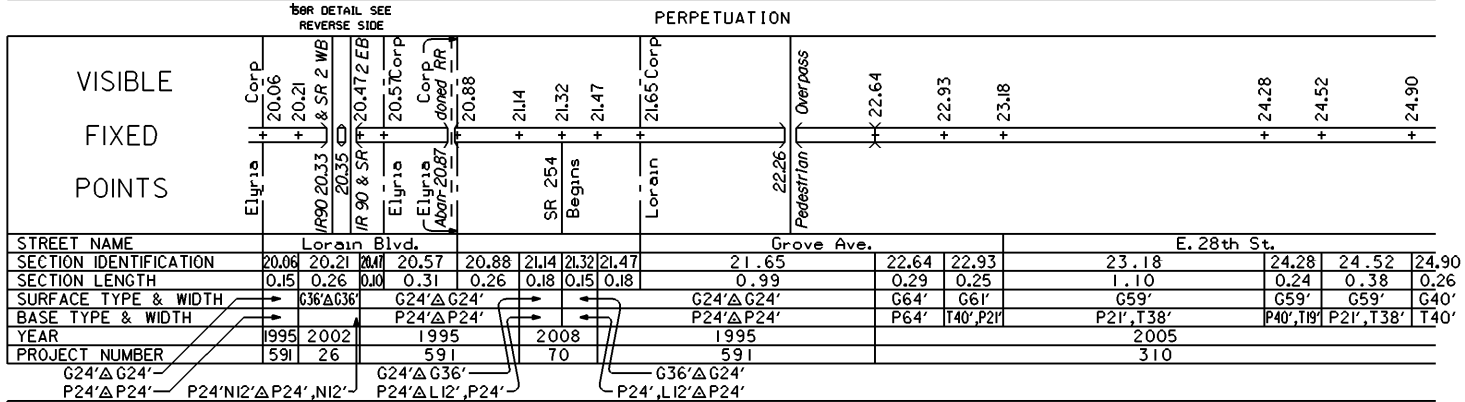
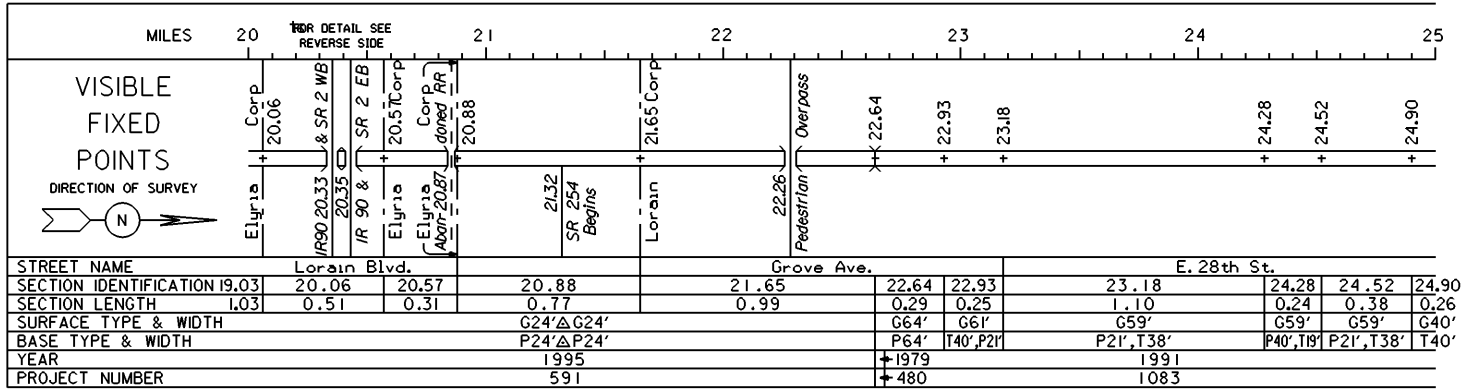
IR 80K SHEET 3 OF 5
SR 57 SHEET 4 OF 6

REVISED Jan 2005

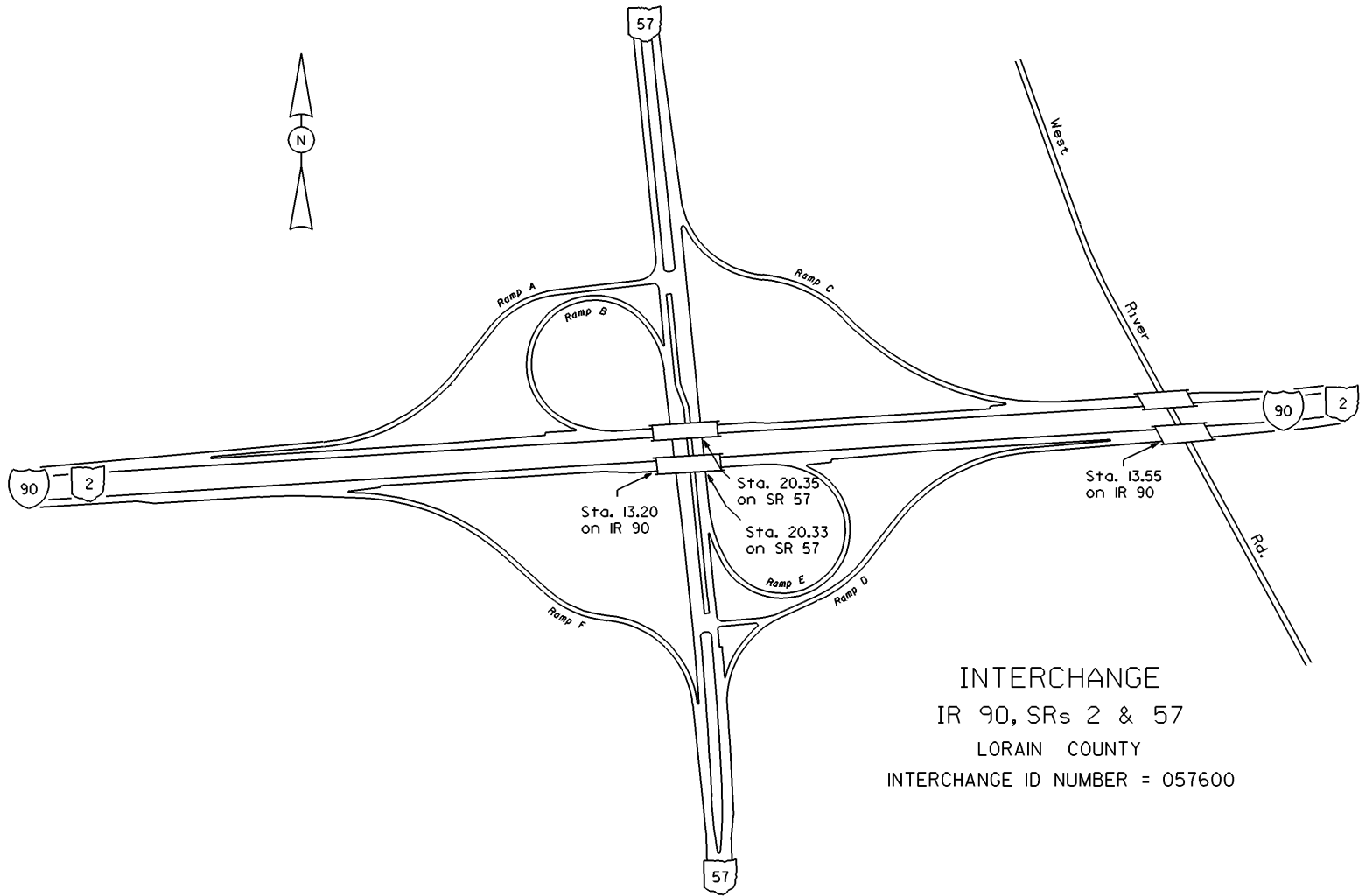
STATE OF OHIO - DEPARTMENT OF TRANSPORTATION

STATE ROUTE SECTIONS ON CONTINUOUS MILEAGE STATIONING

DISTRICT	3
COUNTY	LORA IN
ROUTE	SR 57



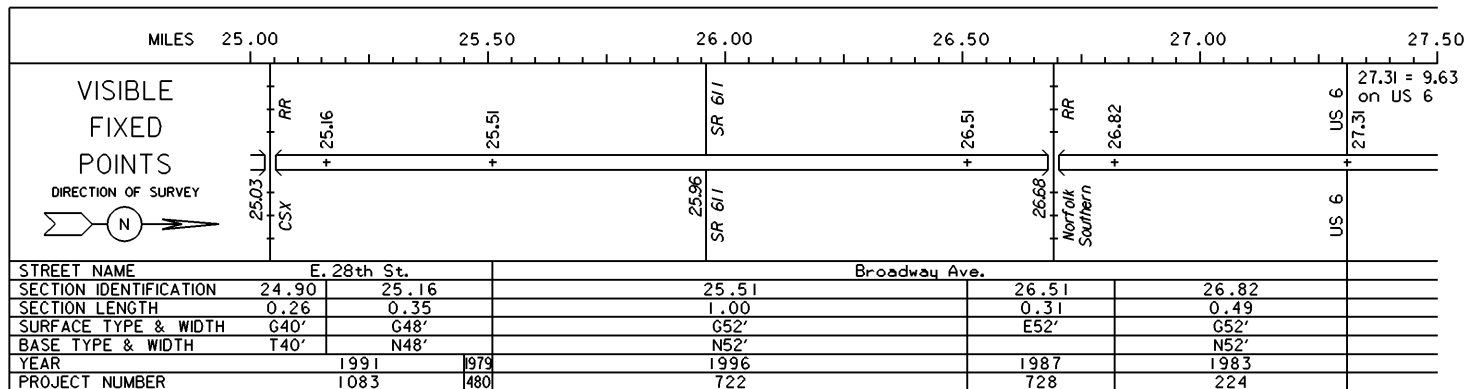
VISIBLE FIXED POINTS
STREET NAME
SECTION IDENTIFICATION
SECTION LENGTH
SURFACE TYPE & WIDTH
BASE TYPE & WIDTH
YEAR
PROJECT NUMBER



INTERCHANGE
 IR 90, SRs 2 & 57
 LORAIN COUNTY
 INTERCHANGE ID NUMBER = 057600

STATE OF OHIO - DEPARTMENT OF TRANSPORTATION
STATE ROUTE SECTIONS ON CONTINUOUS MILEAGE STATIONING

DISTRICT 3
COUNTY LORAIN
ROUTE SR 57



PERPETUATION

