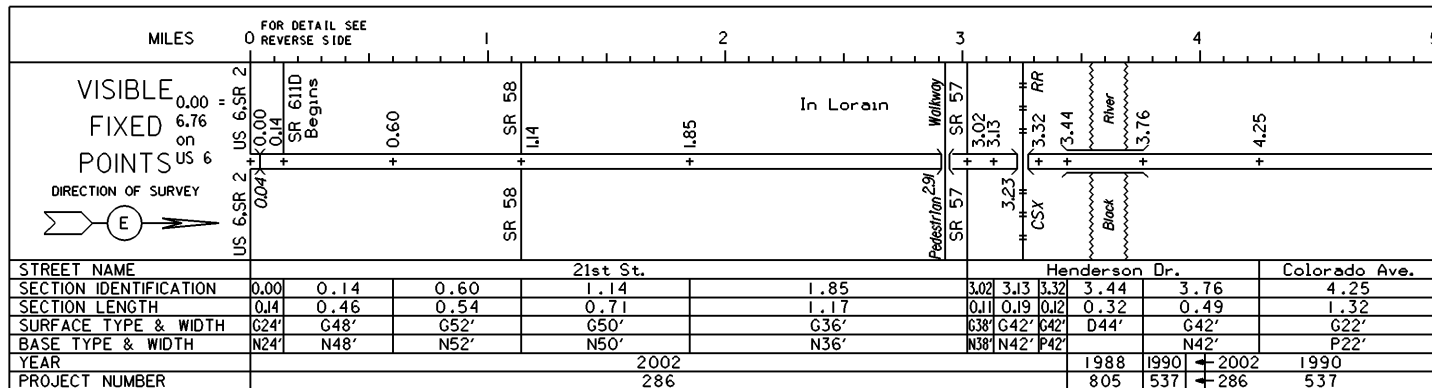
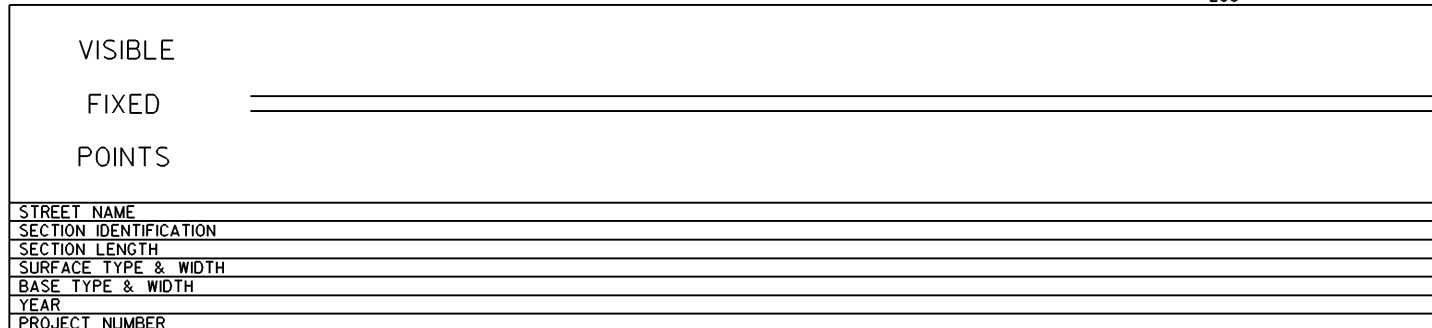
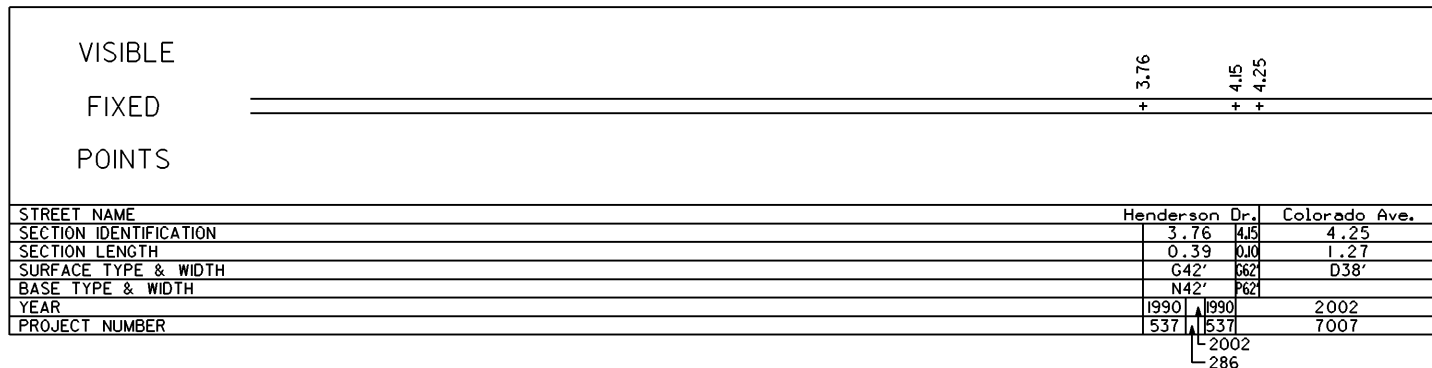


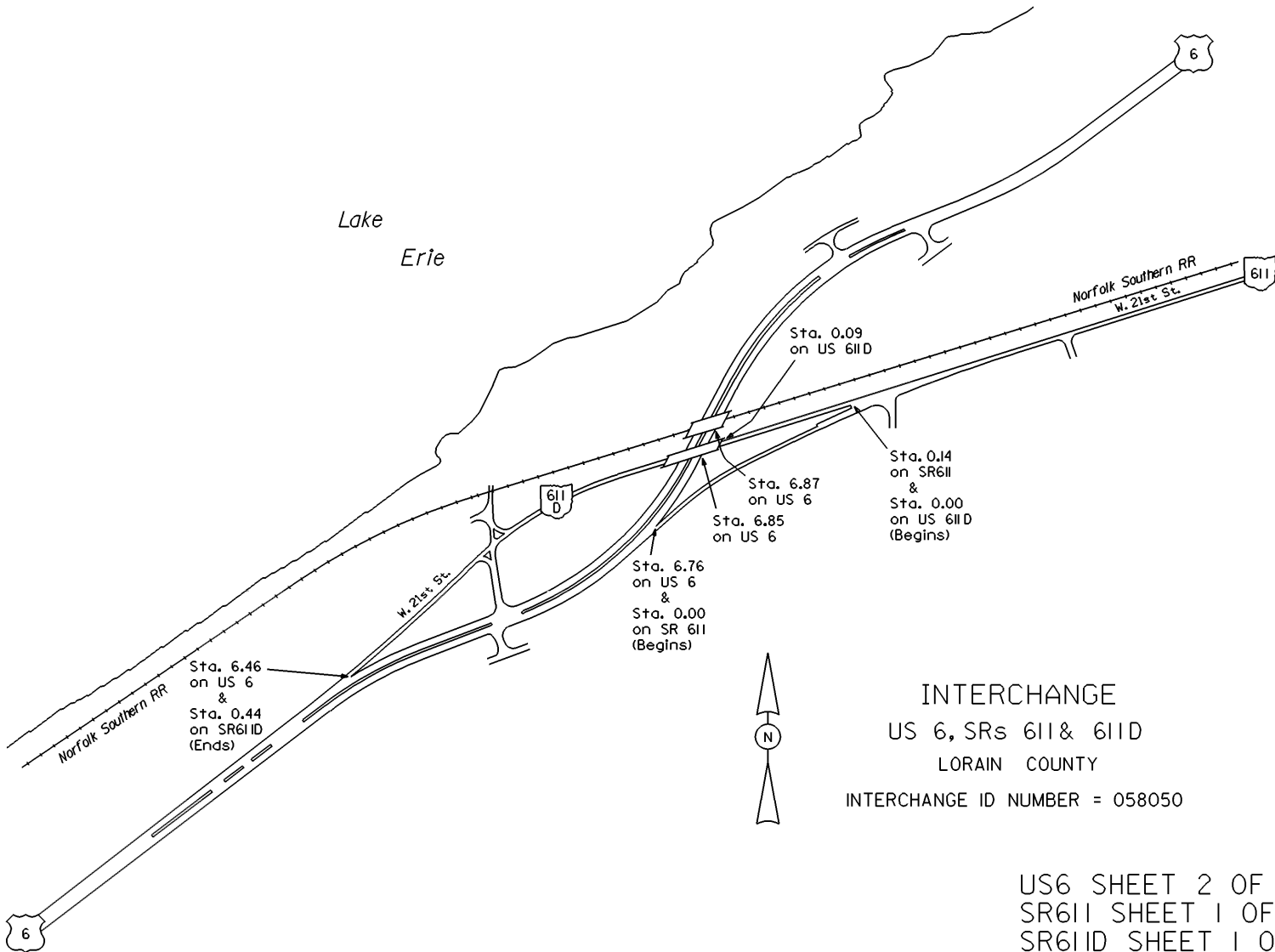
STATE OF OHIO - DEPARTMENT OF TRANSPORTATION
STATE ROUTE SECTIONS ON CONTINUOUS MILEAGE STATIONING

DISTRICT 3
COUNTY LORAIN
ROUTE SR 611



PERPETUATION





INTERCHANGE

US 6, SRs 611 & 611D

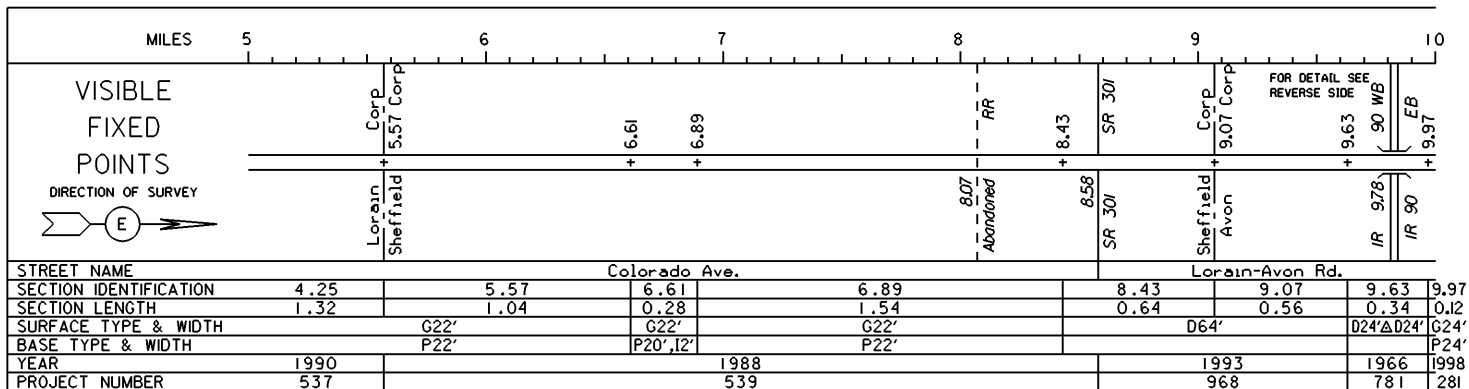
LORAIN COUNTY

INTERCHANGE ID NUMBER = 058050

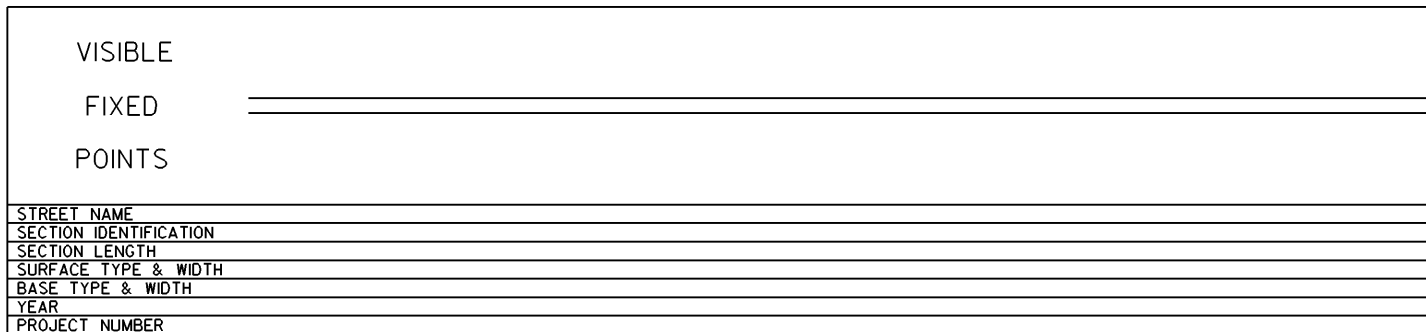
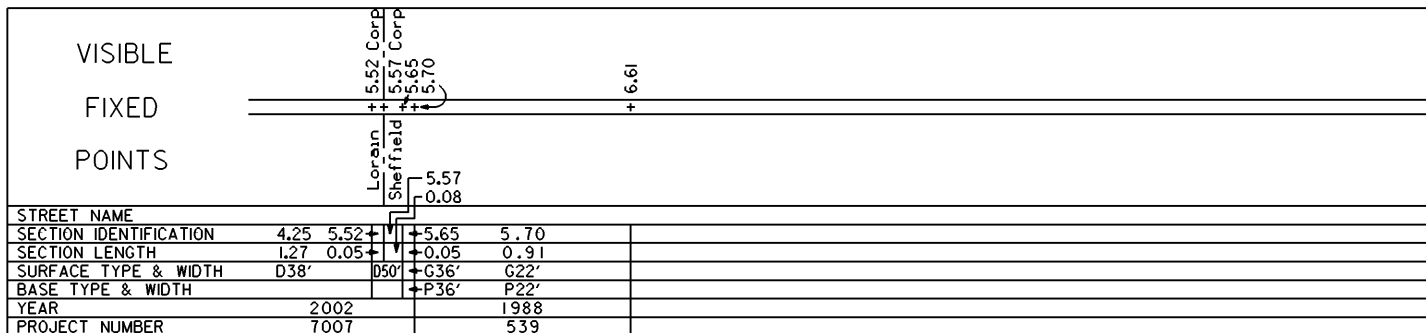
US6 SHEET 2 OF 5
 SR611 SHEET 1 OF 3
 SR611D SHEET 1 OF 1

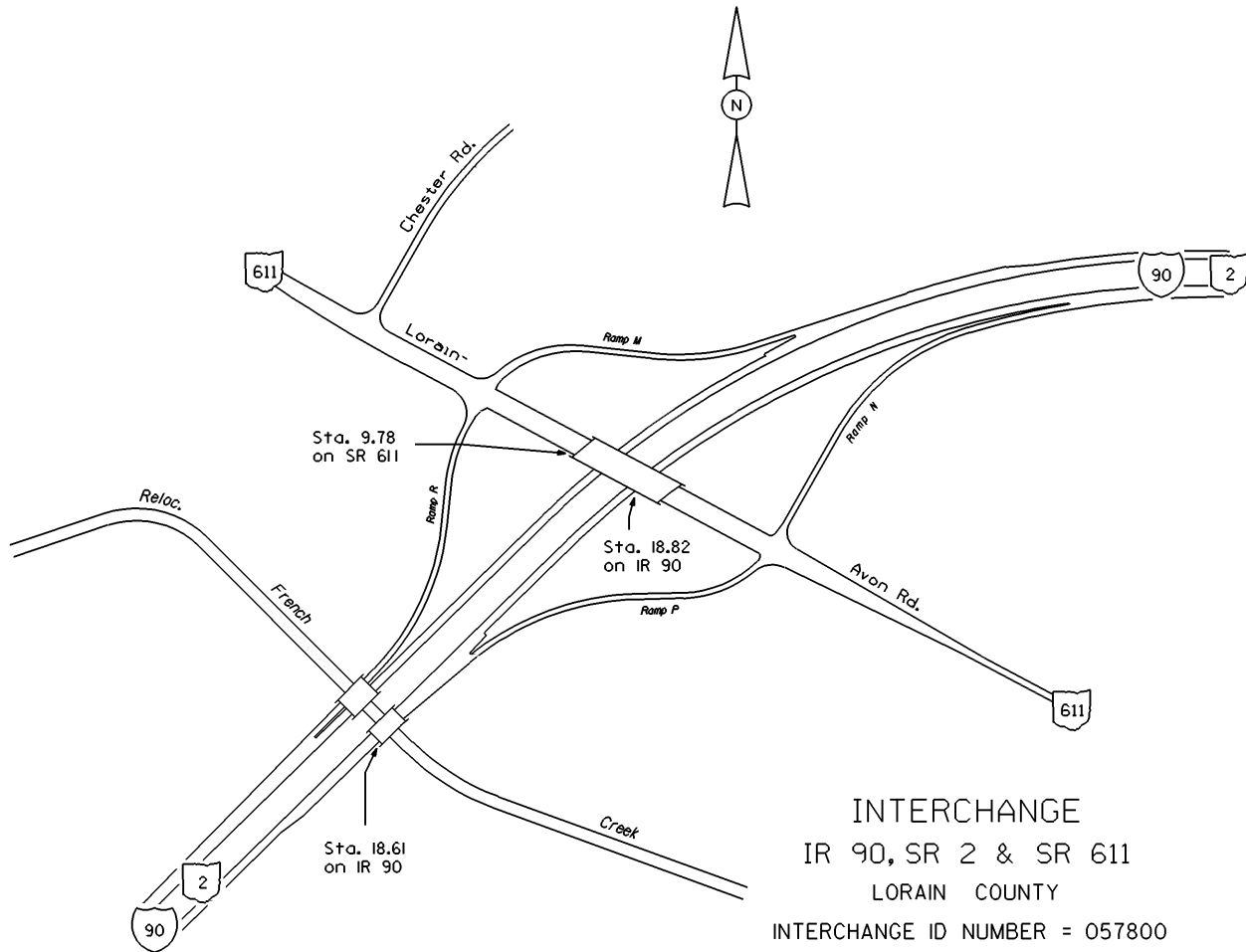
STATE OF OHIO - DEPARTMENT OF TRANSPORTATION
STATE ROUTE SECTIONS ON CONTINUOUS MILEAGE STATIONING

DISTRICT 3
COUNTY LORAIN
ROUTE SR 611



PERPETUATION






INTERCHANGE
 IR 90, SR 2 & SR 611
 LORAIN COUNTY
 INTERCHANGE ID NUMBER = 057800

IR90 SHEET 4 OF 5
 SR611 SHEET 2 OF 3

REVISED Jan 2004

STATE OF OHIO - DEPARTMENT OF TRANSPORTATION
STATE ROUTE SECTIONS ON CONTINUOUS MILEAGE STATIONING

DISTRICT 3
COUNTY LORAIN
ROUTE SR 611

MILES	10.00	10.50	11.00	11.50	12.00	12.50
VISIBLE FIXED POINTS DIRECTION OF SURVEY 	+ 10.09 <hr/>	SR 254 11.13 SR 254		11.13 = 5.09 on SR 254		
STREET NAME Lorain-Avon Rd.						
SECTION IDENTIFICATION 9.97 10.07						
SECTION LENGTH 0.12 1.06						
SURFACE TYPE & WIDTH G24' G22'						
BASE TYPE & WIDTH P24' P22'						
YEAR 1998						
PROJECT NUMBER 281						

PERPETUATION

VISIBLE FIXED POINTS	<hr/> <hr/>					
STREET NAME						
SECTION IDENTIFICATION						
SECTION LENGTH						
SURFACE TYPE & WIDTH						
BASE TYPE & WIDTH						
YEAR						
PROJECT NUMBER						

VISIBLE FIXED POINTS	<hr/> <hr/>					
STREET NAME						
SECTION IDENTIFICATION						
SECTION LENGTH						
SURFACE TYPE & WIDTH						
BASE TYPE & WIDTH						
YEAR						
PROJECT NUMBER						