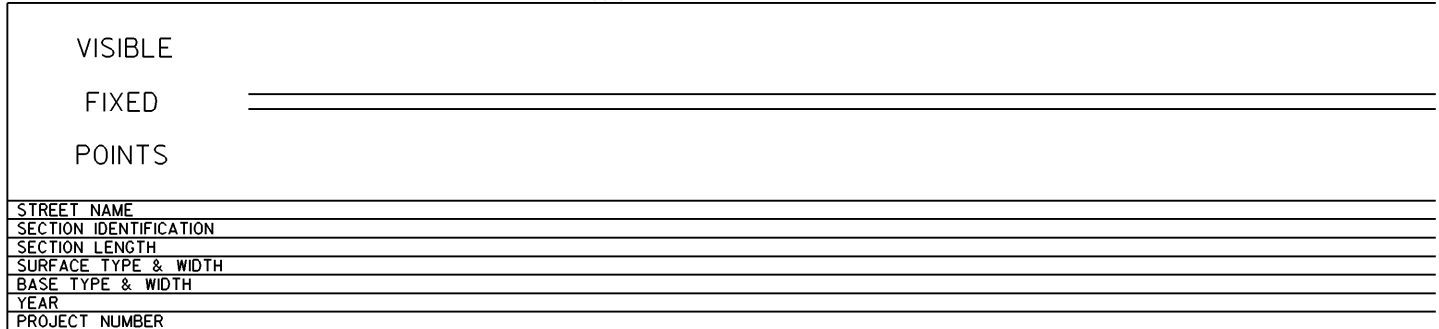
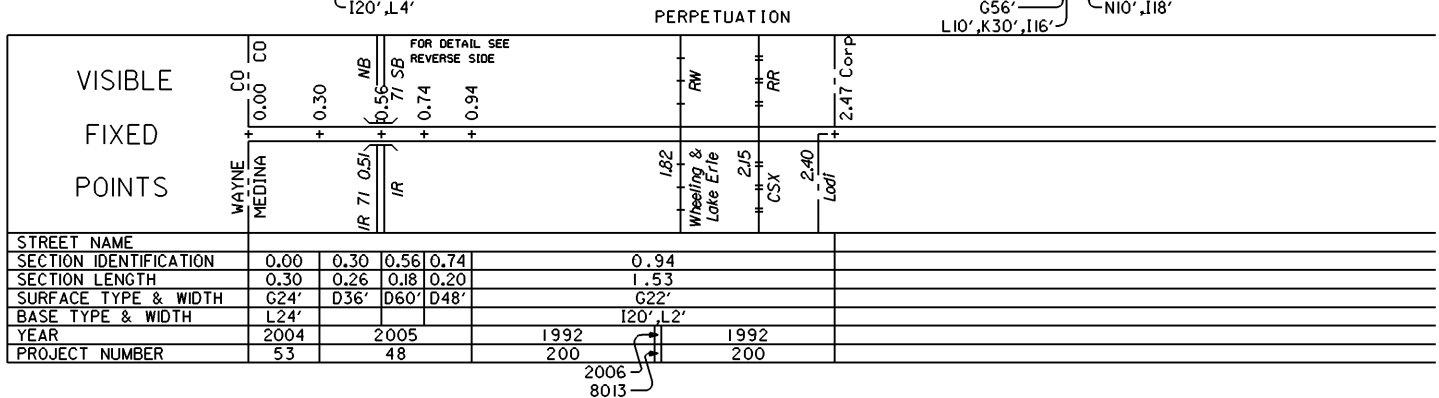
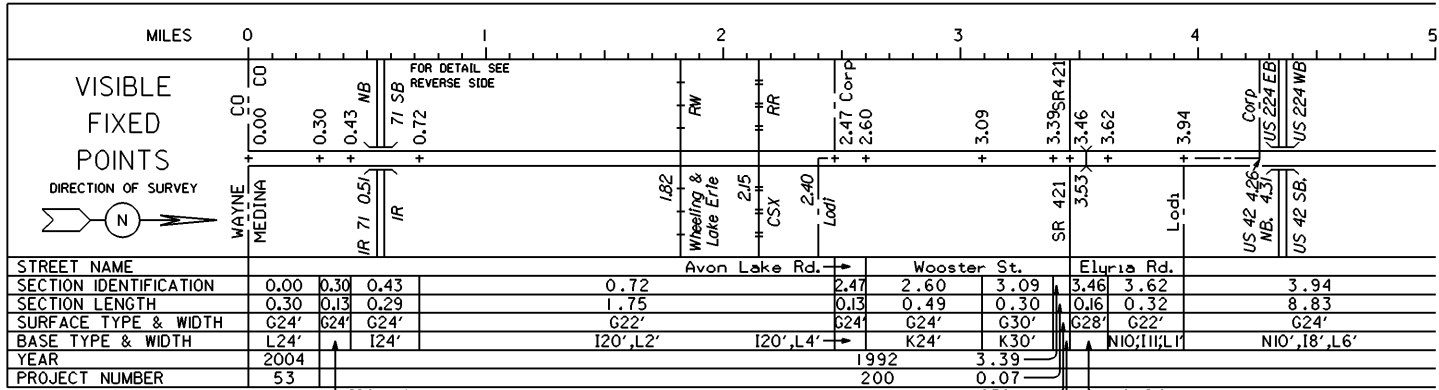
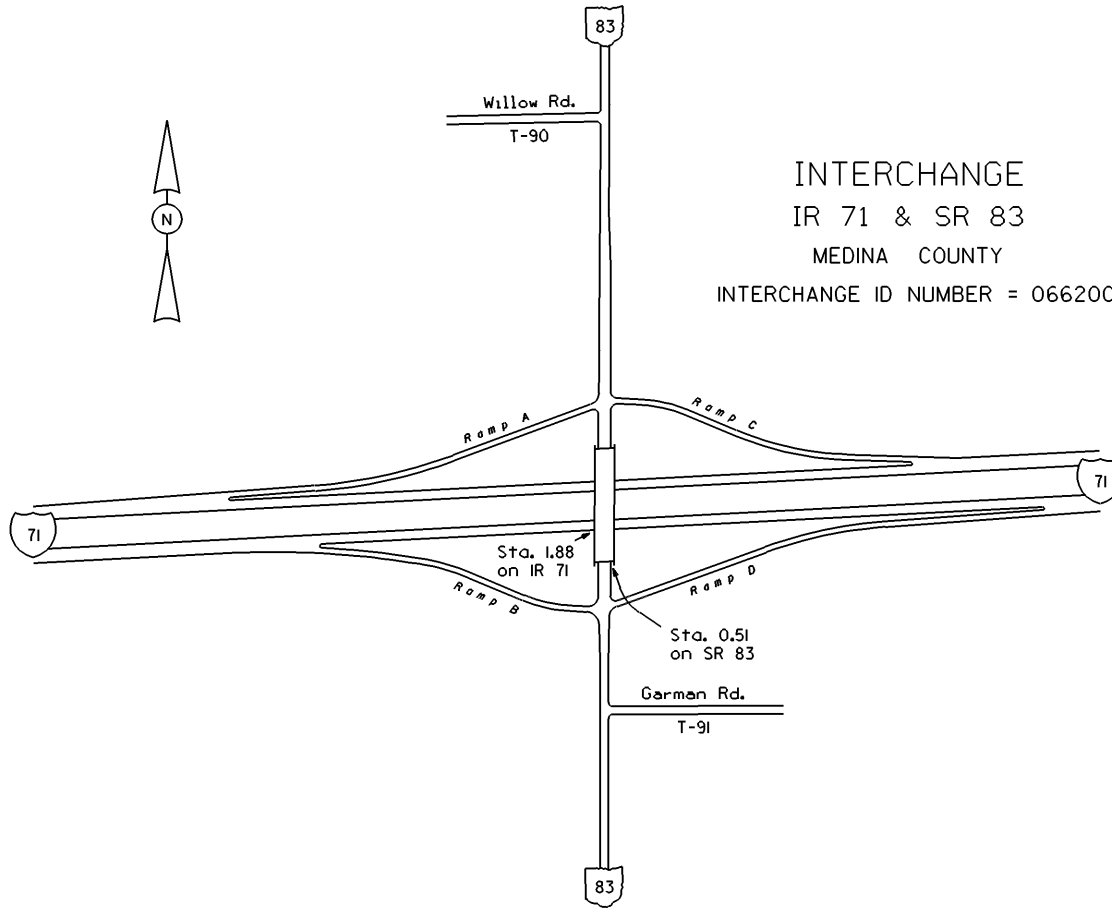


STATE OF OHIO - DEPARTMENT OF TRANSPORTATION

STATE ROUTE SECTIONS ON CONTINUOUS MILEAGE STATIONING

DISTRICT 3
 COUNTY MEDINA
 ROUTE SR 83



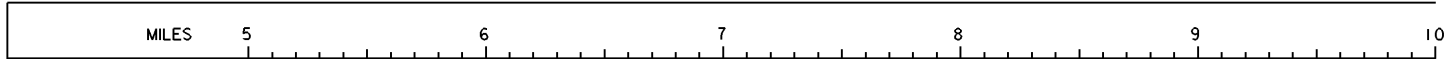


INTERCHANGE
IR 71 & SR 83
MEDINA COUNTY
INTERCHANGE ID NUMBER = 066200

STATE OF OHIO - DEPARTMENT OF TRANSPORTATION

STATE ROUTE SECTIONS ON CONTINUOUS MILEAGE STATIONING

DISTRICT 3
 COUNTY MEDINA
 ROUTE SR 83



VISIBLE
 FIXED
 POINTS

DIRECTION OF SURVEY



SR 162

8.09
 SR 162

STREET NAME	
SECTION IDENTIFICATION	3.94
SECTION LENGTH	8.83
SURFACE TYPE & WIDTH	G24'
BASE TYPE & WIDTH	N10',18',L6'
YEAR	1992
PROJECT NUMBER	200

PERPETUATION

VISIBLE
 FIXED
 POINTS

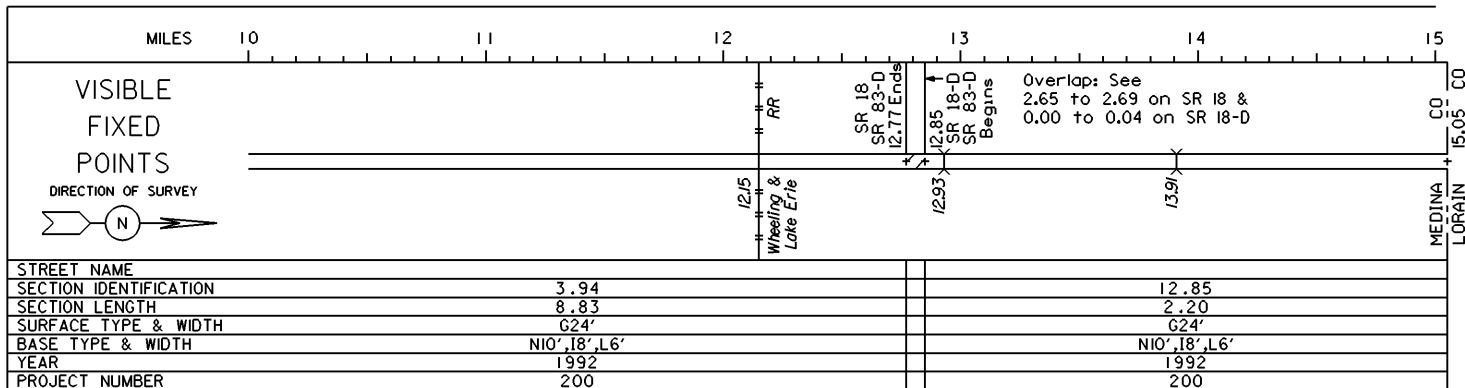
STREET NAME	
SECTION IDENTIFICATION	
SECTION LENGTH	
SURFACE TYPE & WIDTH	
BASE TYPE & WIDTH	
YEAR	
PROJECT NUMBER	

VISIBLE
 FIXED
 POINTS

STREET NAME	
SECTION IDENTIFICATION	
SECTION LENGTH	
SURFACE TYPE & WIDTH	
BASE TYPE & WIDTH	
YEAR	
PROJECT NUMBER	

STATE OF OHIO - DEPARTMENT OF TRANSPORTATION
STATE ROUTE SECTIONS ON CONTINUOUS MILEAGE STATIONING

DISTRICT 3
COUNTY MEDINA
ROUTE SR 83



PERPETUATION

