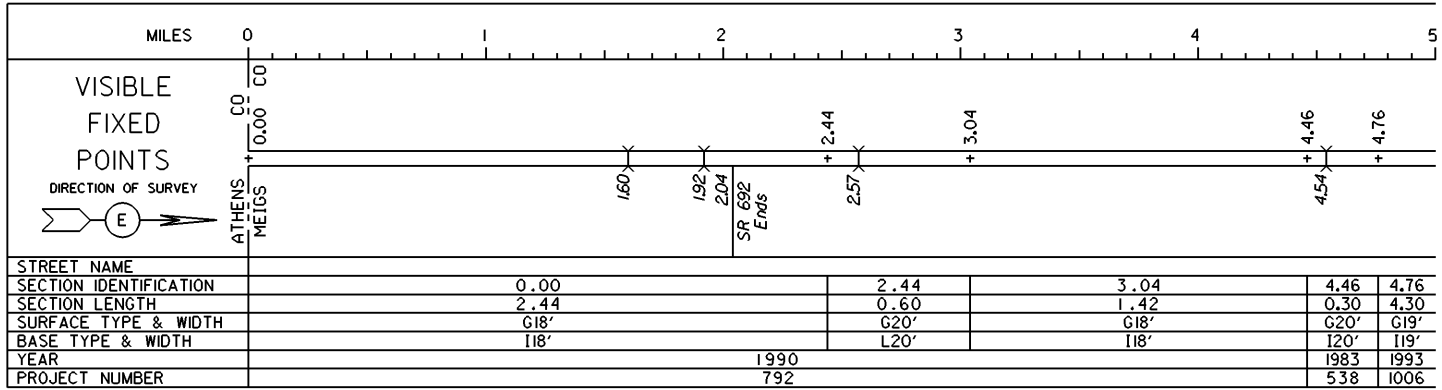


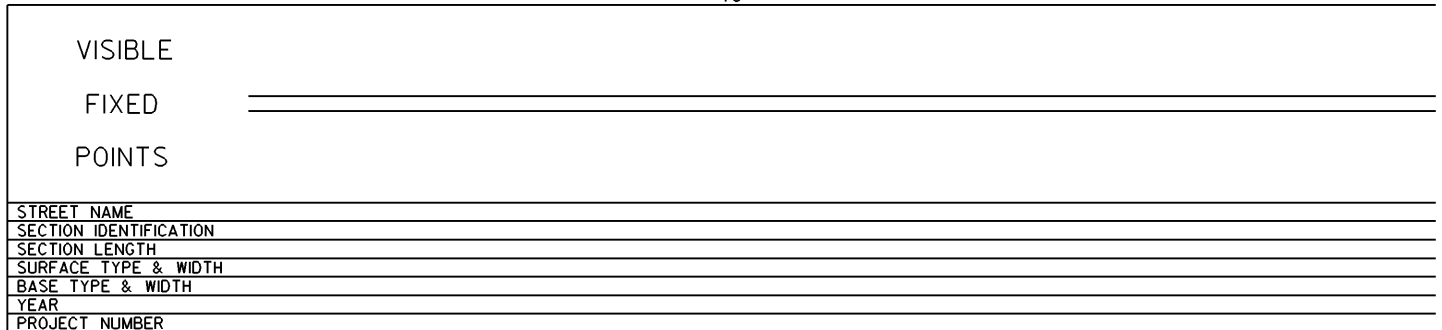
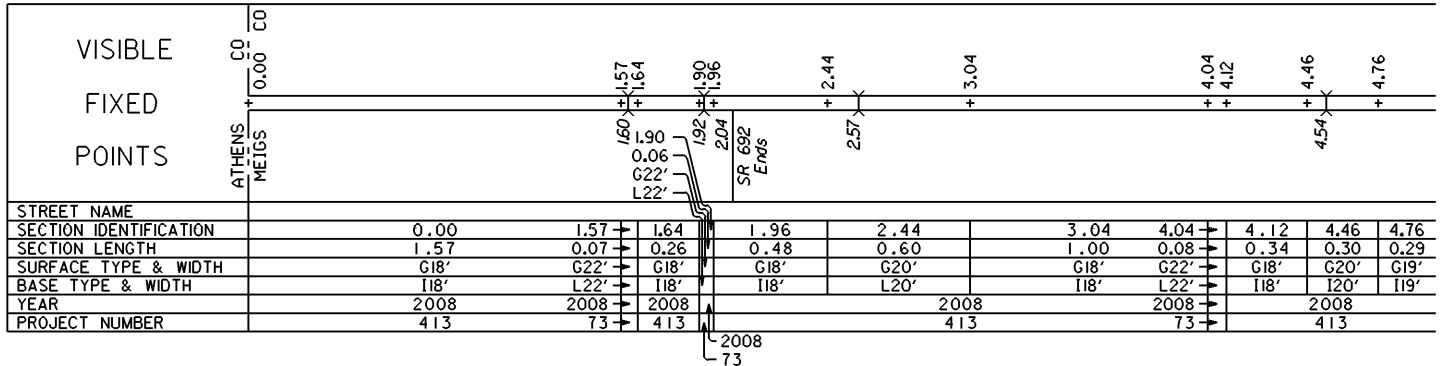
STATE OF OHIO - DEPARTMENT OF TRANSPORTATION

STATE ROUTE SECTIONS ON CONTINUOUS MILEAGE STATIONING

DISTRICT	10
COUNTY	MEIGS
ROUTE	SR 681

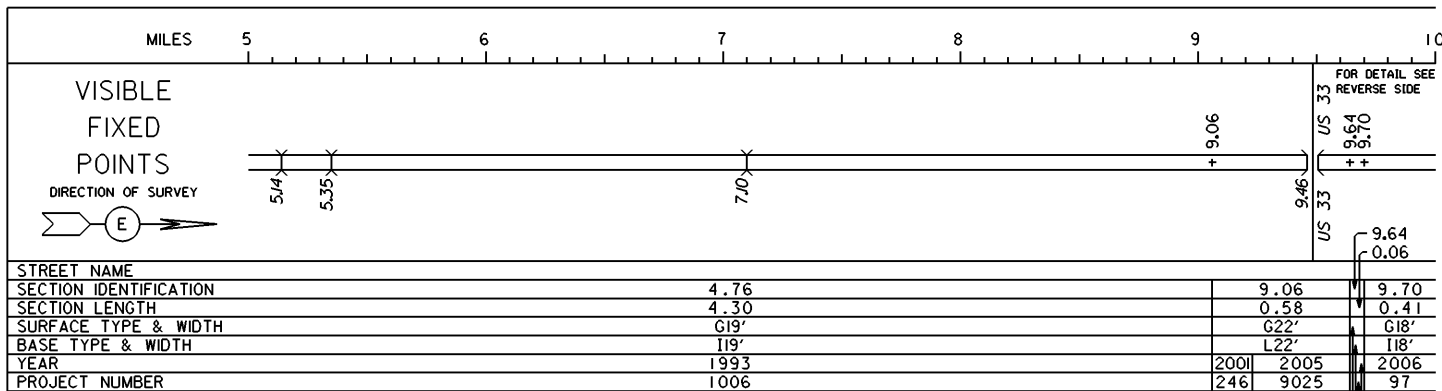


PERPETUATION

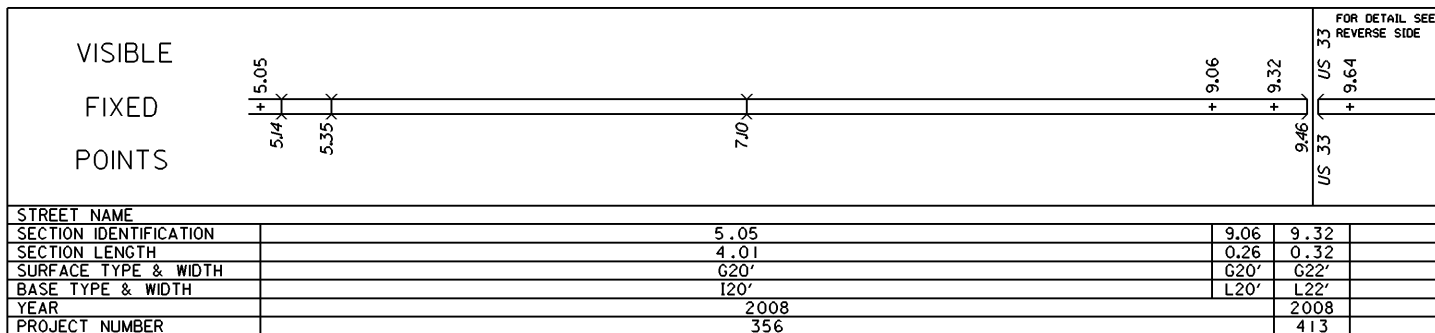
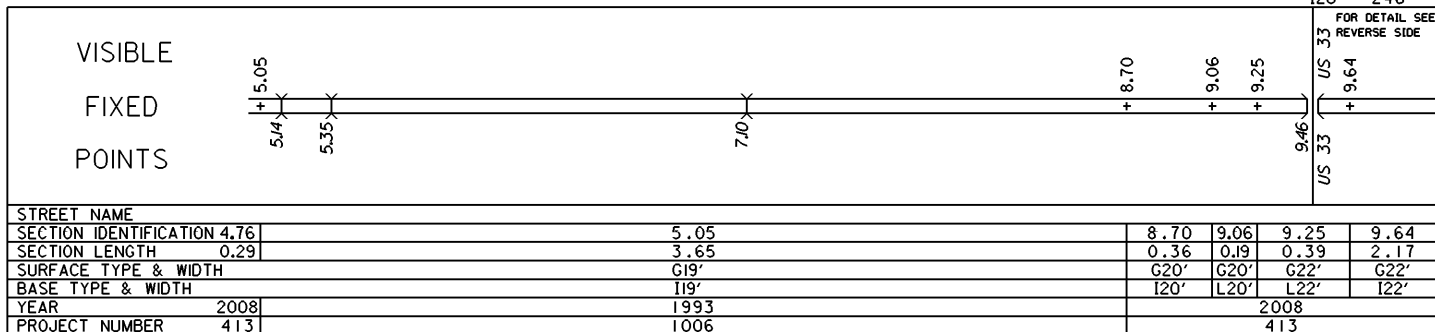


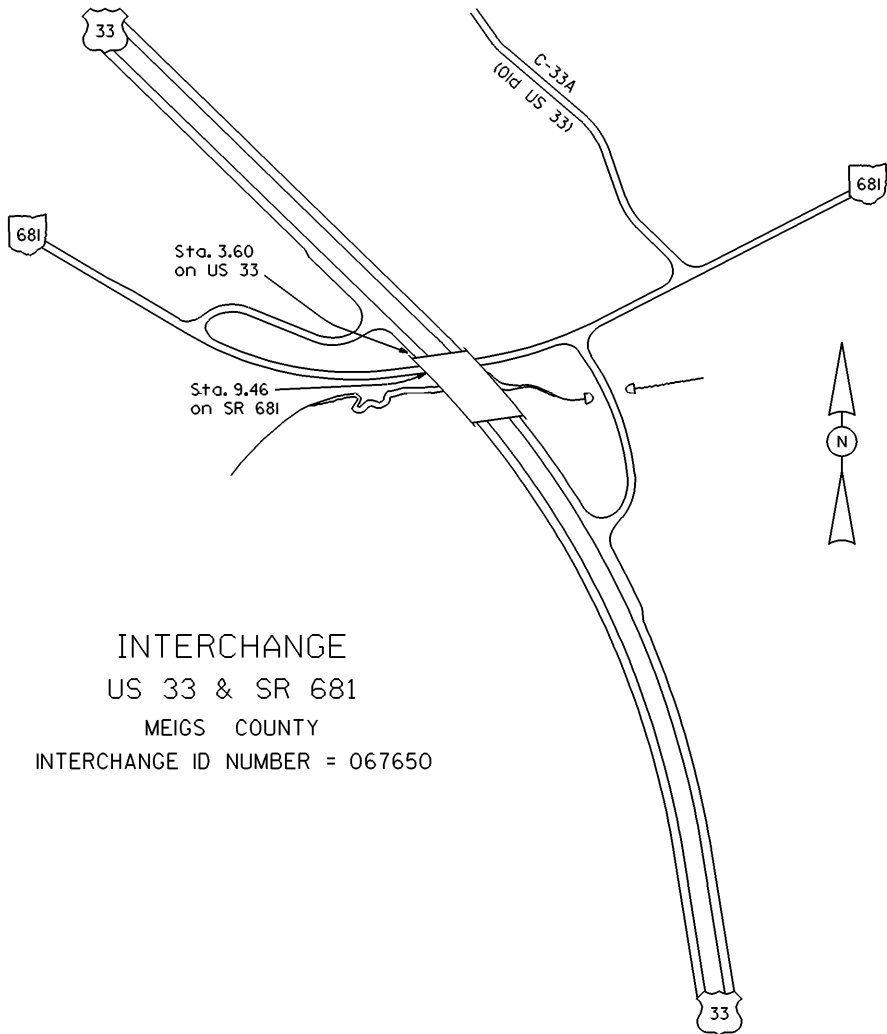
STATE OF OHIO - DEPARTMENT OF TRANSPORTATION
STATE ROUTE SECTIONS ON CONTINUOUS MILEAGE STATIONING

DISTRICT 10
COUNTY MEIGS
ROUTE SR 681



PERPETUATION





INTERCHANGE
US 33 & SR 681
MEIGS COUNTY
INTERCHANGE ID NUMBER = 067650

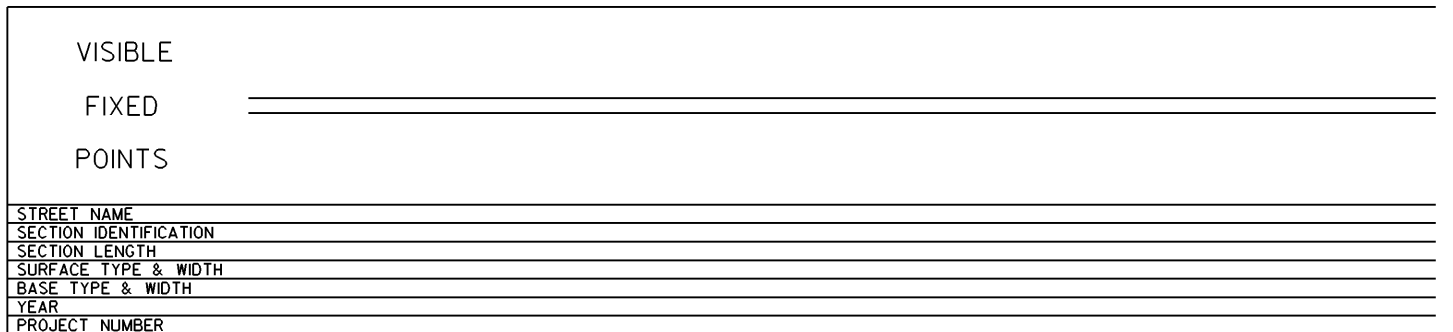
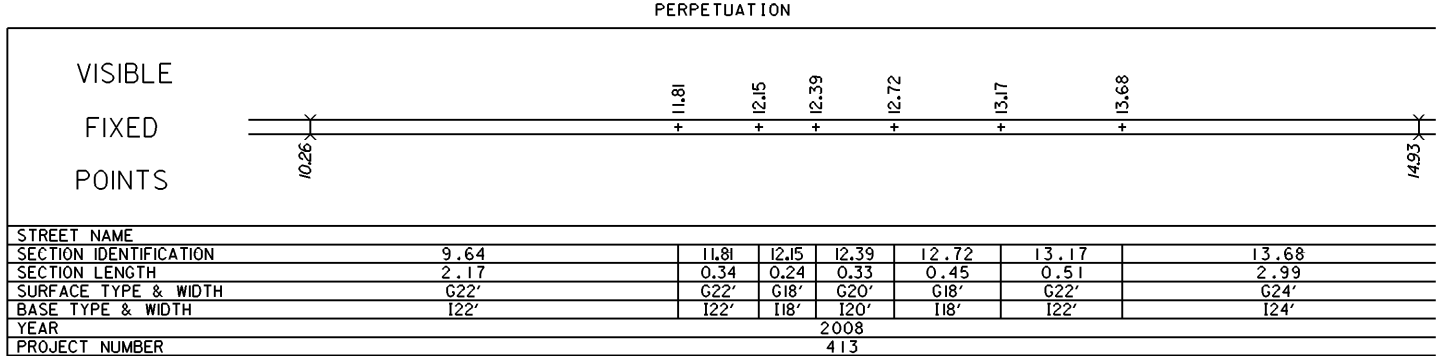
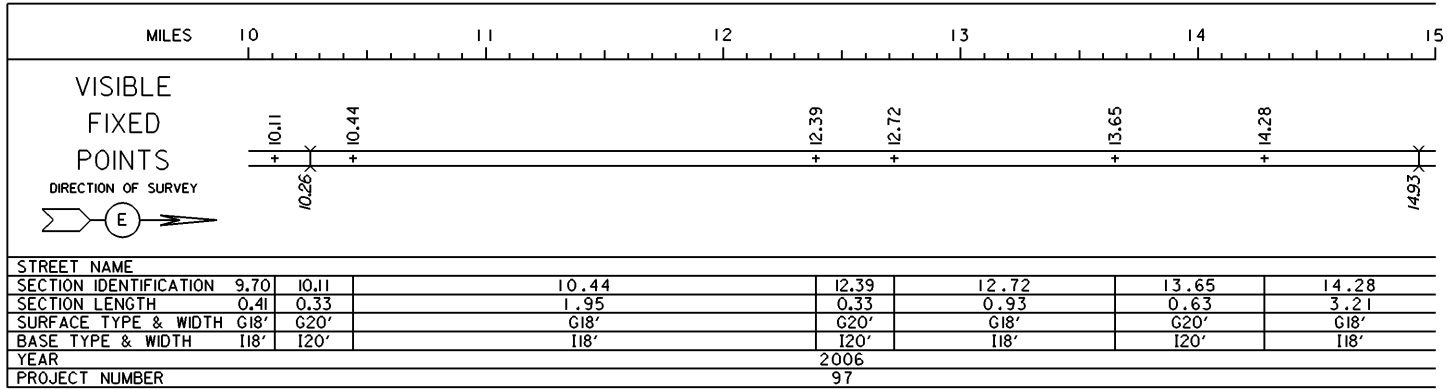
US 33 SHEET 1 OF 6
SR 681 SHEET 2 OF 6

REVISED Jan 2008

STATE OF OHIO - DEPARTMENT OF TRANSPORTATION

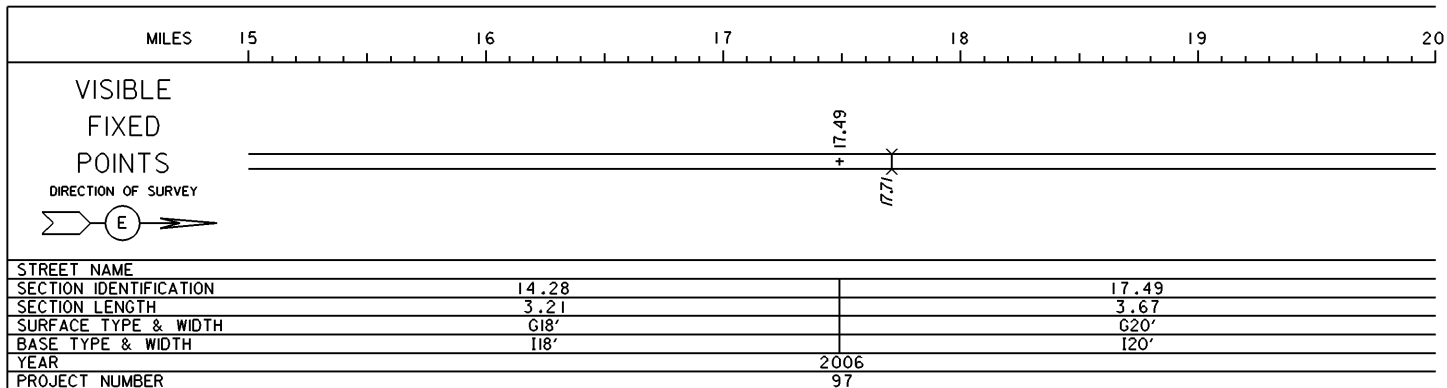
STATE ROUTE SECTIONS ON CONTINUOUS MILEAGE STATIONING

DISTRICT 10
 COUNTY MEigs
 ROUTE SR 681

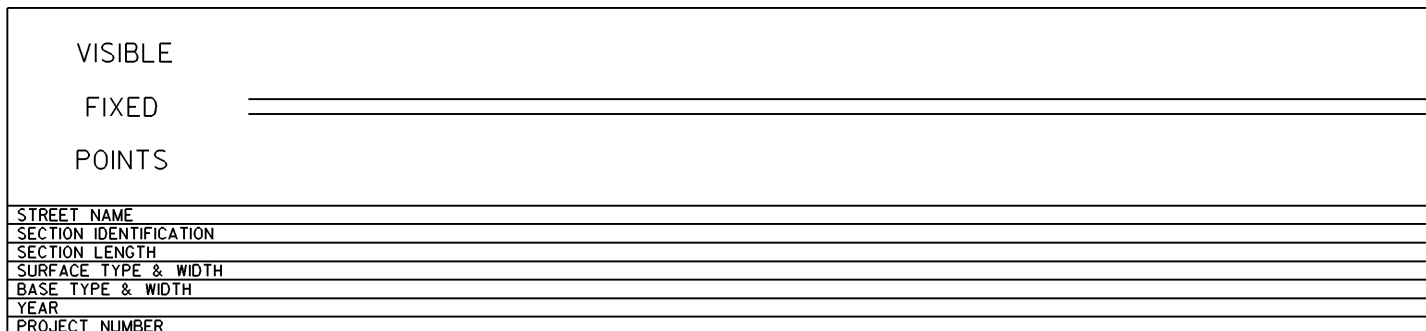
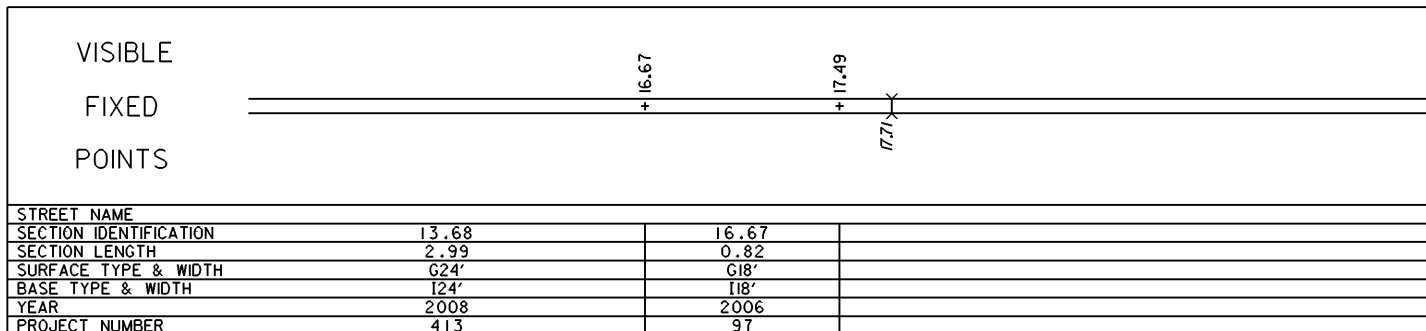


STATE OF OHIO - DEPARTMENT OF TRANSPORTATION
STATE ROUTE SECTIONS ON CONTINUOUS MILEAGE STATIONING

DISTRICT 10
COUNTY MEigs
ROUTE SR 681

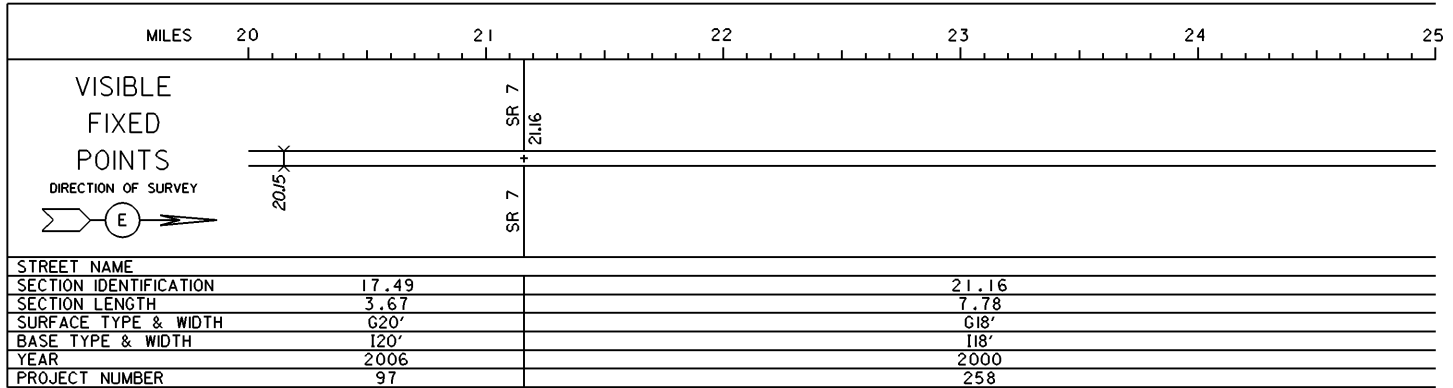


PERPETUATION

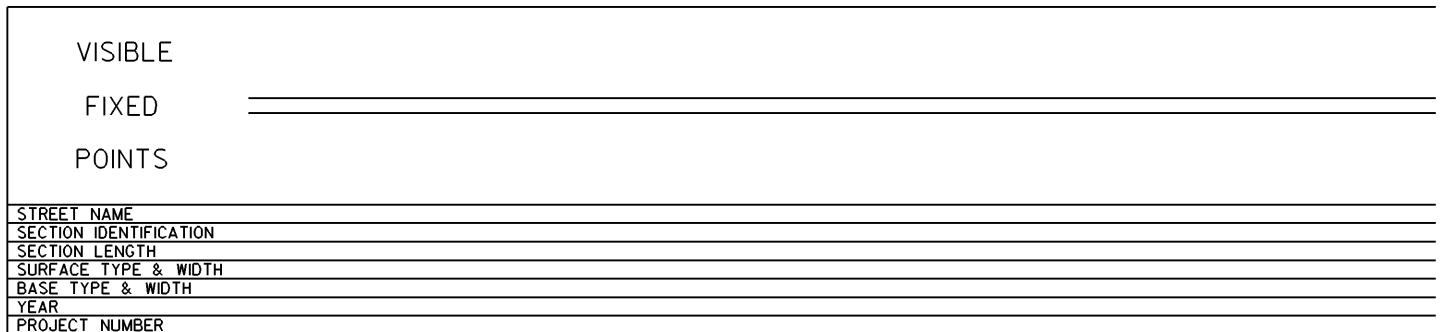
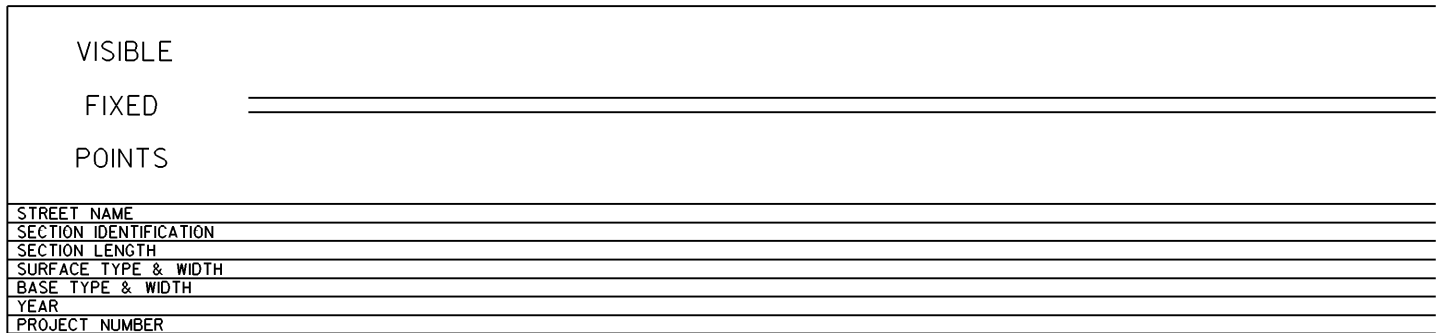


STATE OF OHIO - DEPARTMENT OF TRANSPORTATION
STATE ROUTE SECTIONS ON CONTINUOUS MILEAGE STATIONING

DISTRICT 10
COUNTY MEigs
ROUTE SR 681




PERPETUATION



STATE OF OHIO - DEPARTMENT OF TRANSPORTATION
STATE ROUTE SECTIONS ON CONTINUOUS MILEAGE STATIONING

DISTRICT 10
COUNTY MEigs
ROUTE SR 681

MILES	25	26	27	28	29	30	
VISIBLE FIXED POINTS DIRECTION OF SURVEY 						SR 124 28.94 + SR 124	28.94 = 62.29 on SR 124
STREET NAME							
SECTION IDENTIFICATION	21.16						
SECTION LENGTH	7.78						
SURFACE TYPE & WIDTH	G18'						
BASE TYPE & WIDTH	I18'						
YEAR	2000						
PROJECT NUMBER	258						

PERPETUATION

VISIBLE FIXED POINTS						
STREET NAME						
SECTION IDENTIFICATION						
SECTION LENGTH						
SURFACE TYPE & WIDTH						
BASE TYPE & WIDTH						
YEAR						
PROJECT NUMBER						

VISIBLE FIXED POINTS						
STREET NAME						
SECTION IDENTIFICATION						
SECTION LENGTH						
SURFACE TYPE & WIDTH						
BASE TYPE & WIDTH						
YEAR						
PROJECT NUMBER						