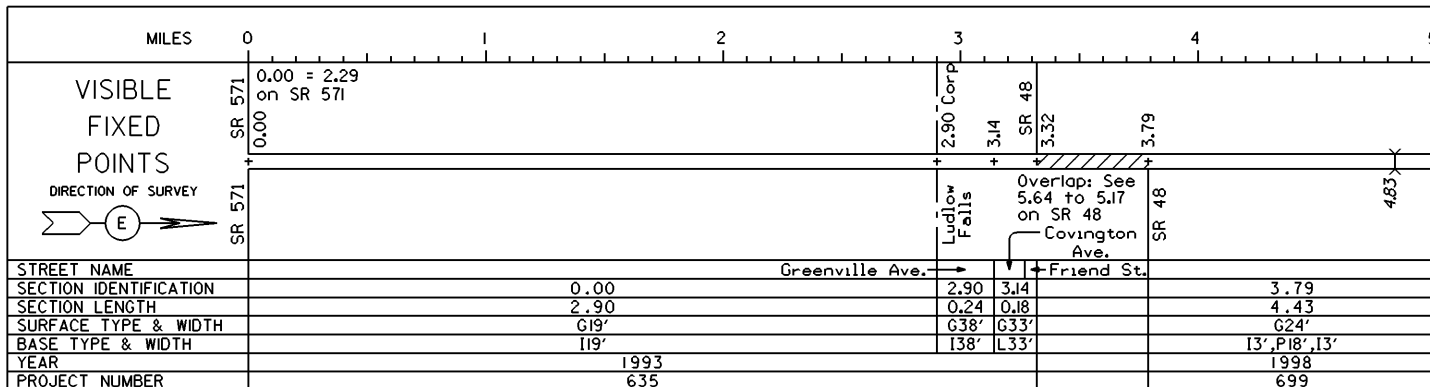
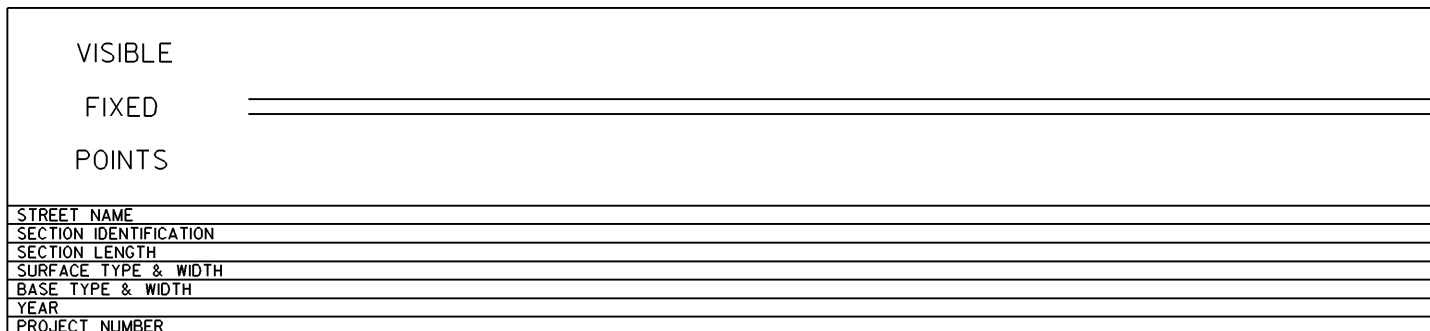
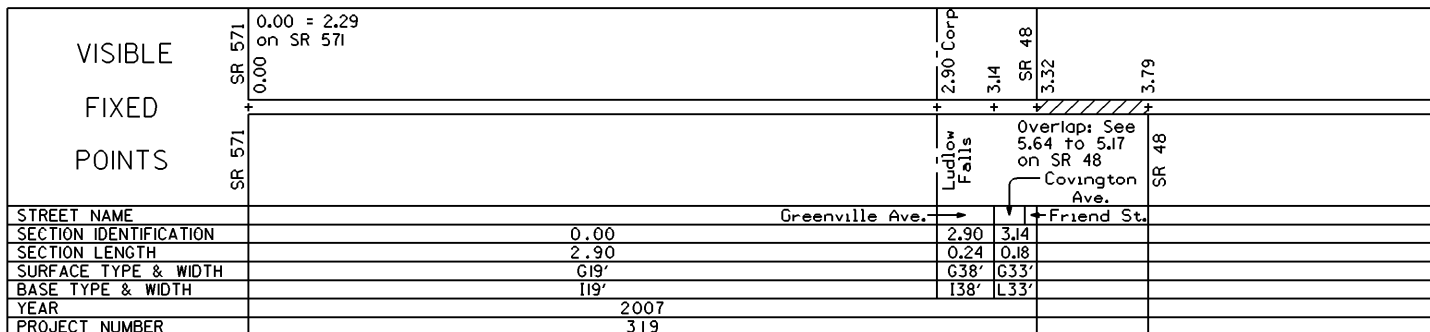


STATE OF OHIO - DEPARTMENT OF TRANSPORTATION  
STATE ROUTE SECTIONS ON CONTINUOUS MILEAGE STATIONING

DISTRICT 7  
COUNTY MIAMI  
ROUTE SR 55

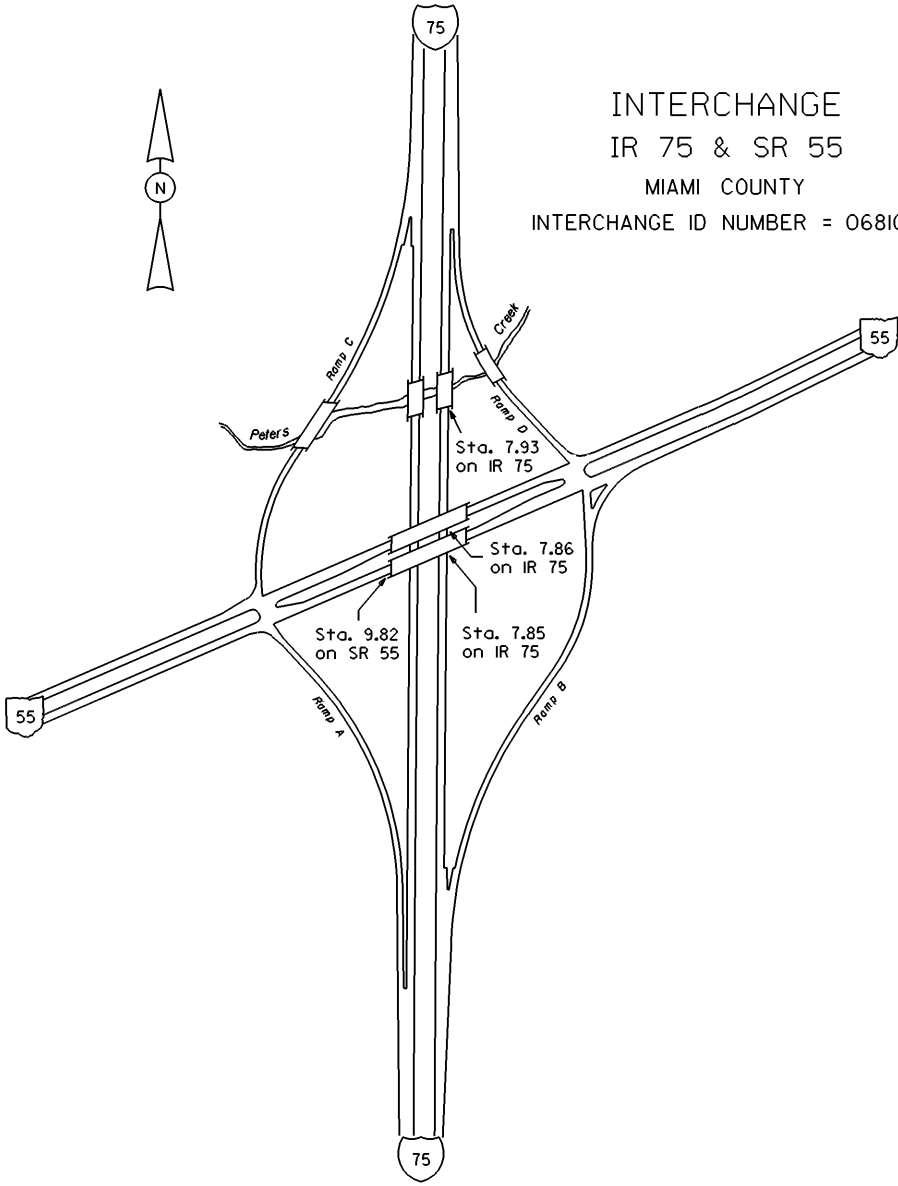


PERPETUATION





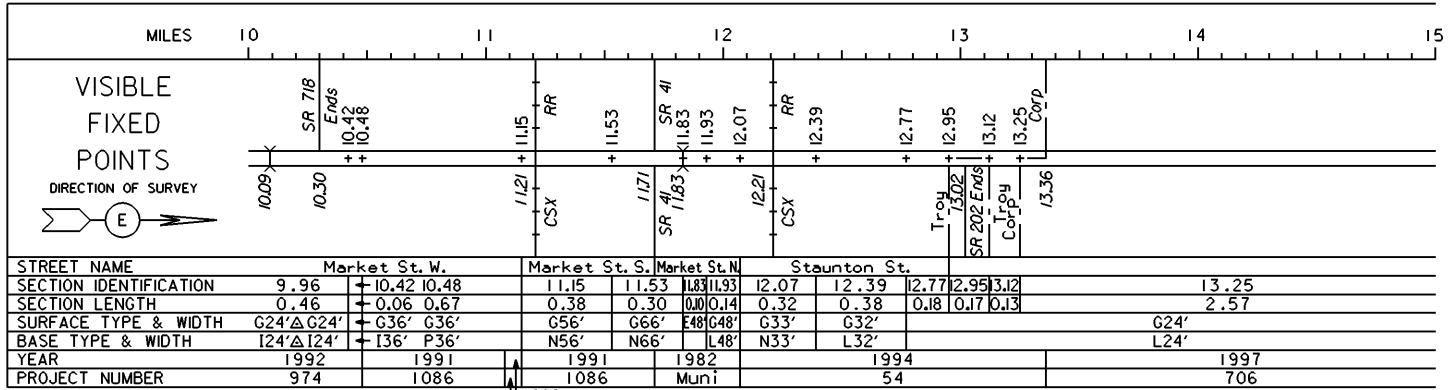
INTERCHANGE  
IR 75 & SR 55  
MIAMI COUNTY  
INTERCHANGE ID NUMBER = 068100



# STATE OF OHIO - DEPARTMENT OF TRANSPORTATION

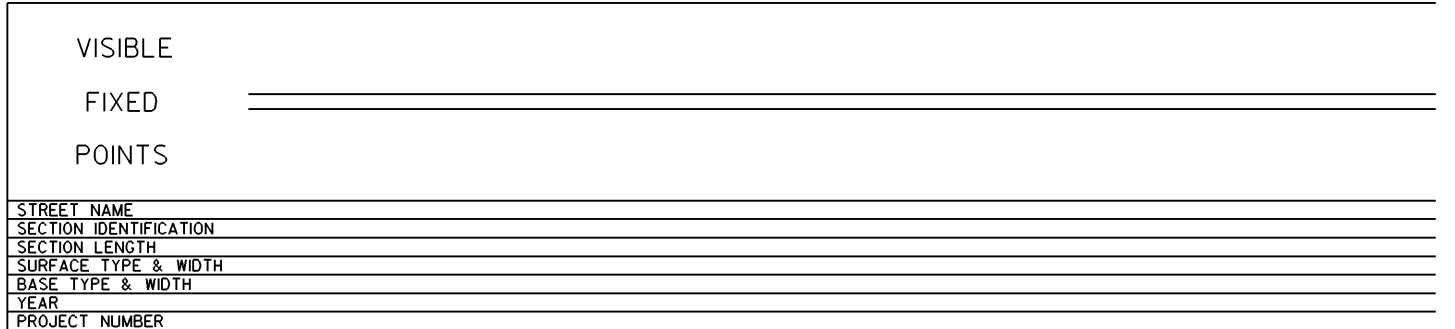
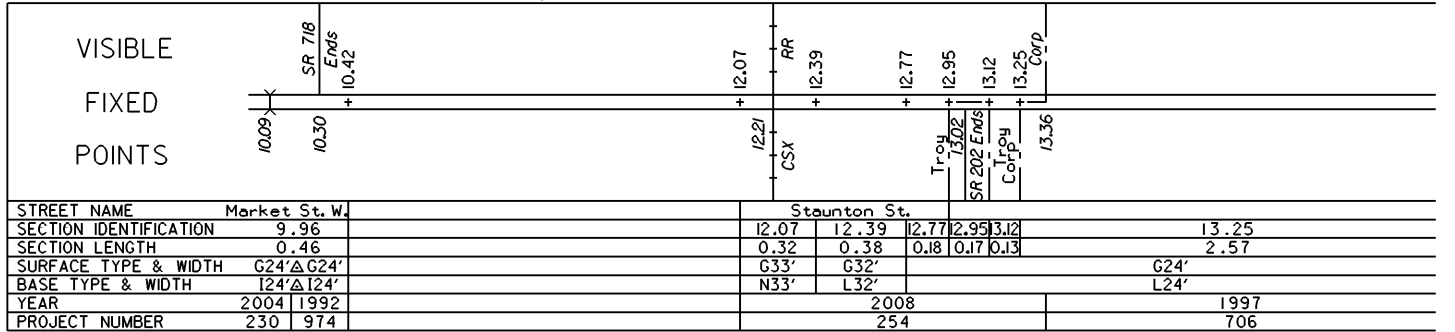
STATE ROUTE SECTIONS ON CONTINUOUS MILEAGE STATIONING

DISTRICT	7
COUNTY	MIAMI
ROUTE	SR 55



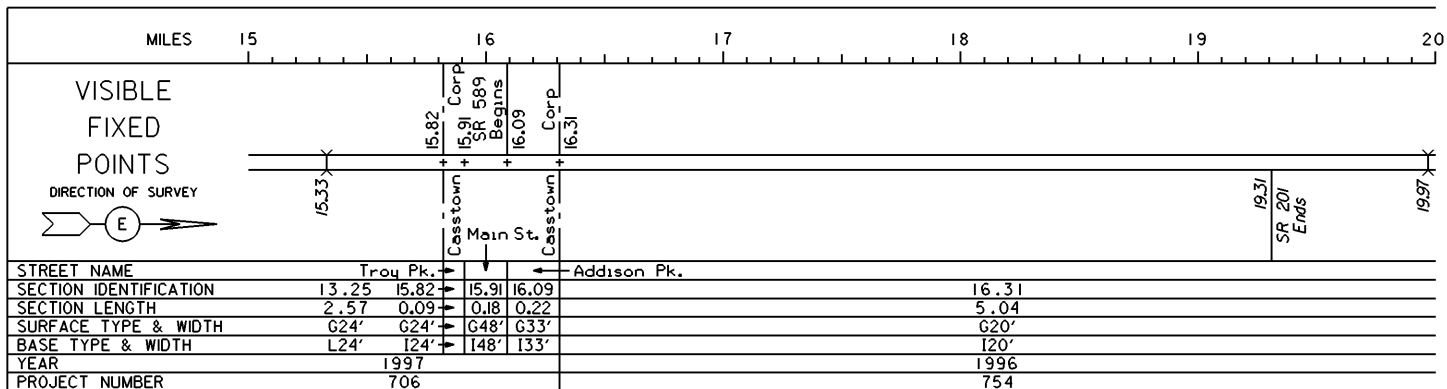
PERPETUATION

1989  
761

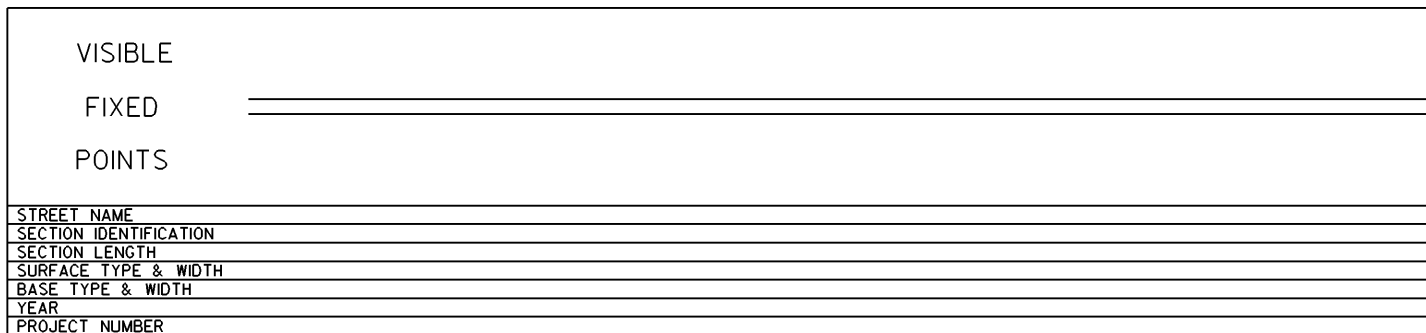
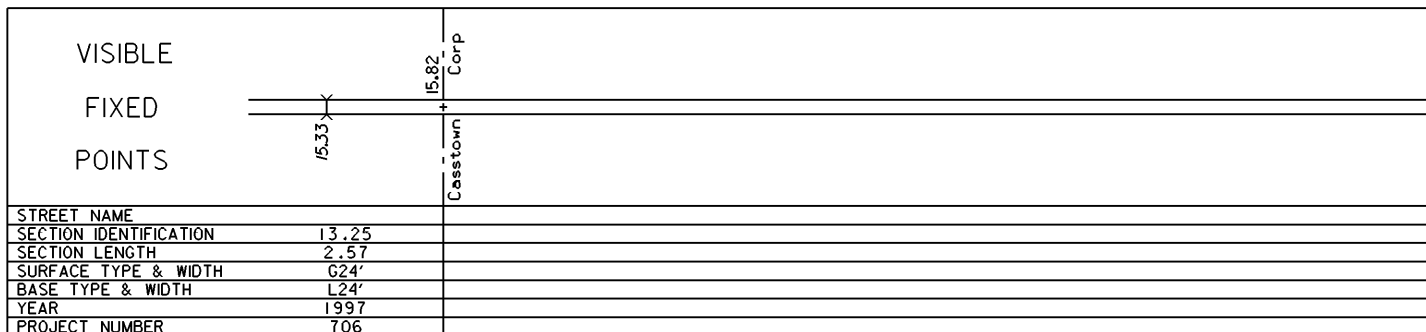


STATE OF OHIO - DEPARTMENT OF TRANSPORTATION  
STATE ROUTE SECTIONS ON CONTINUOUS MILEAGE STATIONING

DISTRICT 7  
COUNTY MIAMI  
ROUTE SR 55




PERPETUATION



STATE OF OHIO - DEPARTMENT OF TRANSPORTATION  
STATE ROUTE SECTIONS ON CONTINUOUS MILEAGE STATIONING

DISTRICT 7  
COUNTY MIAMI  
ROUTE SR 55

MILES	20.00	20.50	21.00	21.50	22.00	22.50
VISIBLE FIXED POINTS  DIRECTION OF SURVEY 						
STREET NAME				MIAMI CHAMPAIGN + 21.35 - CO		
SECTION IDENTIFICATION		16.31				
SECTION LENGTH		5.04				
SURFACE TYPE & WIDTH		G20'				
BASE TYPE & WIDTH		I20'				
YEAR		1996				
PROJECT NUMBER		754				

PERPETUATION

VISIBLE  FIXED  POINTS					
STREET NAME					
SECTION IDENTIFICATION					
SECTION LENGTH					
SURFACE TYPE & WIDTH					
BASE TYPE & WIDTH					
YEAR					
PROJECT NUMBER					

VISIBLE  FIXED  POINTS					
STREET NAME					
SECTION IDENTIFICATION					
SECTION LENGTH					
SURFACE TYPE & WIDTH					
BASE TYPE & WIDTH					
YEAR					
PROJECT NUMBER					