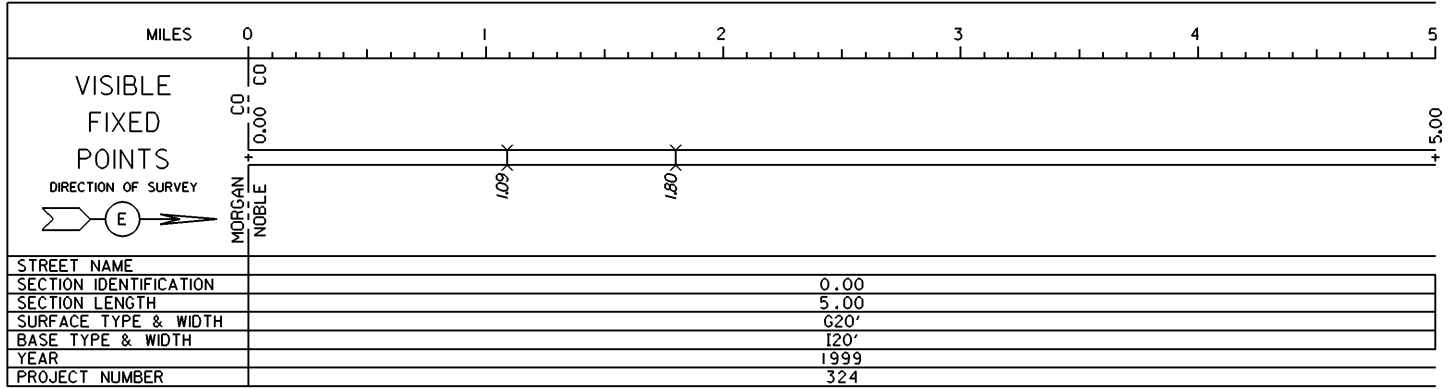


STATE OF OHIO - DEPARTMENT OF TRANSPORTATION

STATE ROUTE SECTIONS ON CONTINUOUS MILEAGE STATIONING

DISTRICT	10
COUNTY	NOBLE
ROUTE	SR 78



PERPETUATION

VISIBLE
FIXED
POINTS

STREET NAME
SECTION IDENTIFICATION
SECTION LENGTH
SURFACE TYPE & WIDTH
BASE TYPE & WIDTH
YEAR
PROJECT NUMBER

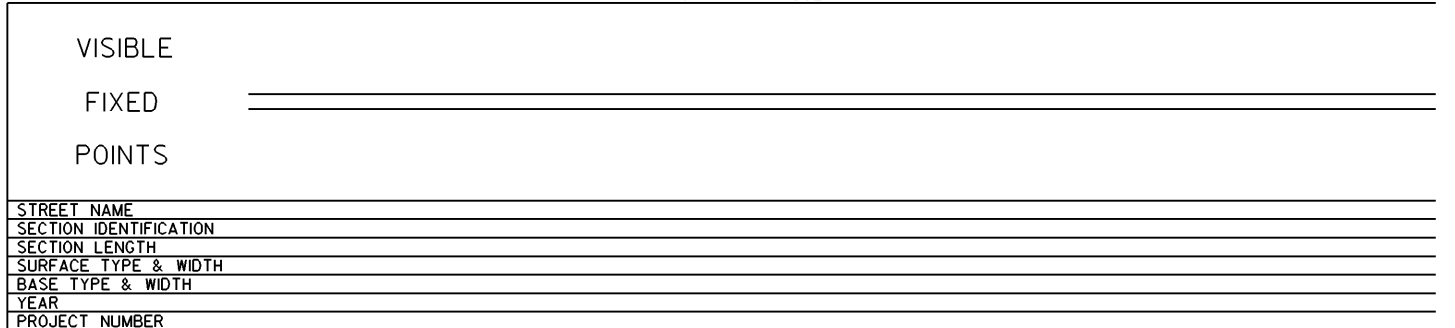
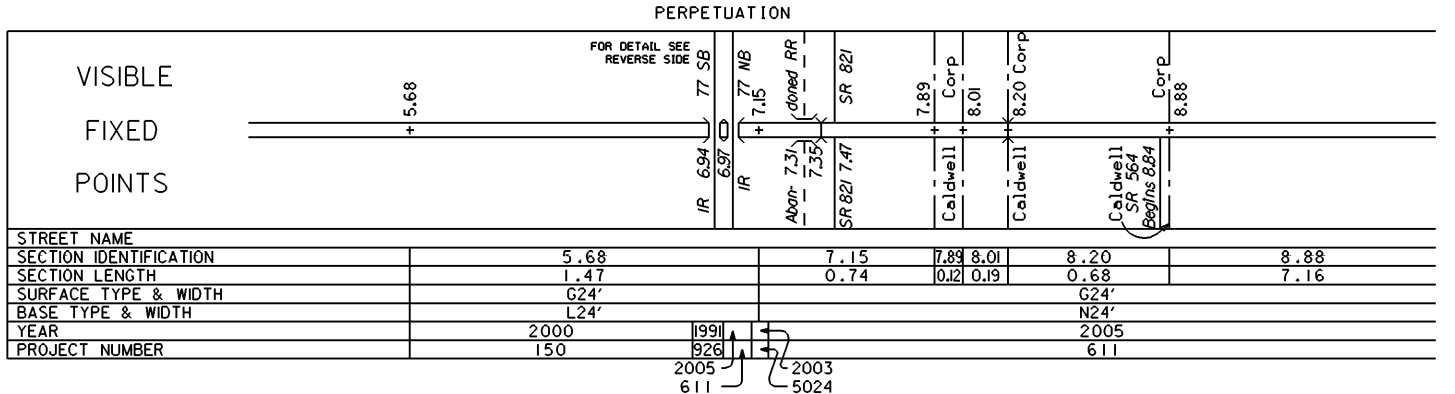
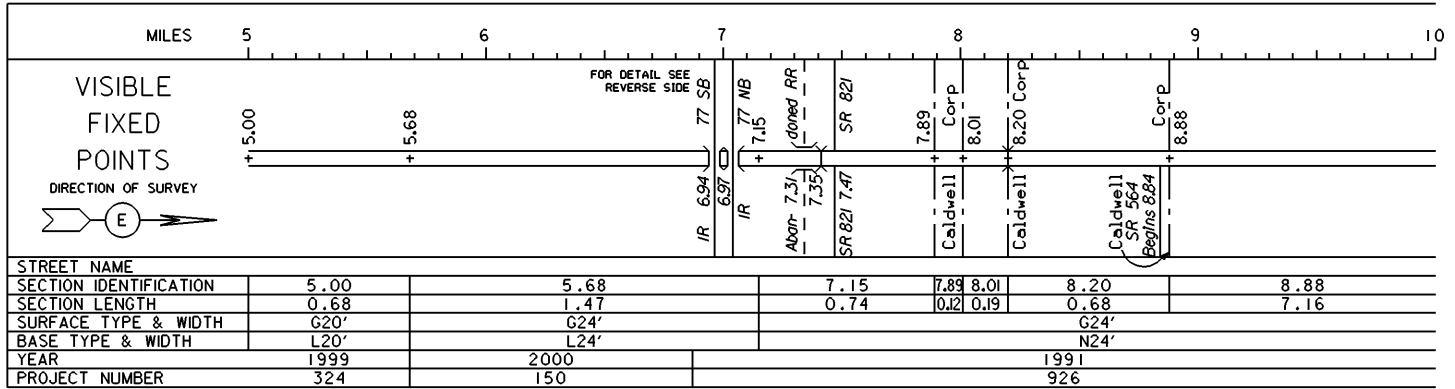
VISIBLE
FIXED
POINTS

STREET NAME
SECTION IDENTIFICATION
SECTION LENGTH
SURFACE TYPE & WIDTH
BASE TYPE & WIDTH
YEAR
PROJECT NUMBER

STATE OF OHIO - DEPARTMENT OF TRANSPORTATION

STATE ROUTE SECTIONS ON CONTINUOUS MILEAGE STATIONING

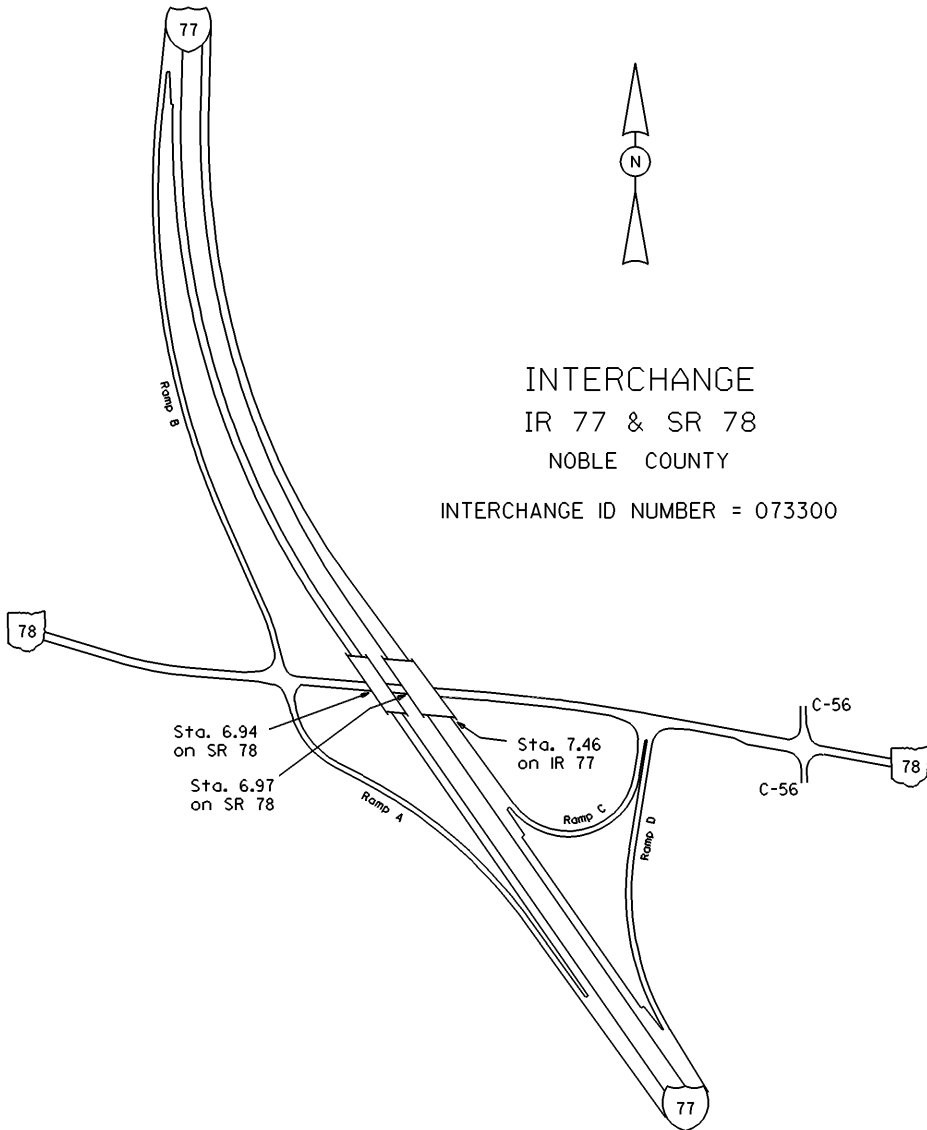
DISTRICT 10
 COUNTY NOBLE
 ROUTE SR 78






INTERCHANGE
IR 77 & SR 78
NOBLE COUNTY

INTERCHANGE ID NUMBER = 073300



STATE OF OHIO - DEPARTMENT OF TRANSPORTATION
STATE ROUTE SECTIONS ON CONTINUOUS MILEAGE STATIONING

DISTRICT 10
COUNTY NOBLE
ROUTE SR 78

MILES	10	11	12	13	14	15
VISIBLE FIXED POINTS DIRECTION OF SURVEY 				SR 147 Begins 12.51		
STREET NAME						
SECTION IDENTIFICATION				8.88		
SECTION LENGTH				7.16		
SURFACE TYPE & WIDTH				G24'		
BASE TYPE & WIDTH				N24'		
YEAR		1991			1990	
PROJECT NUMBER		926			125	

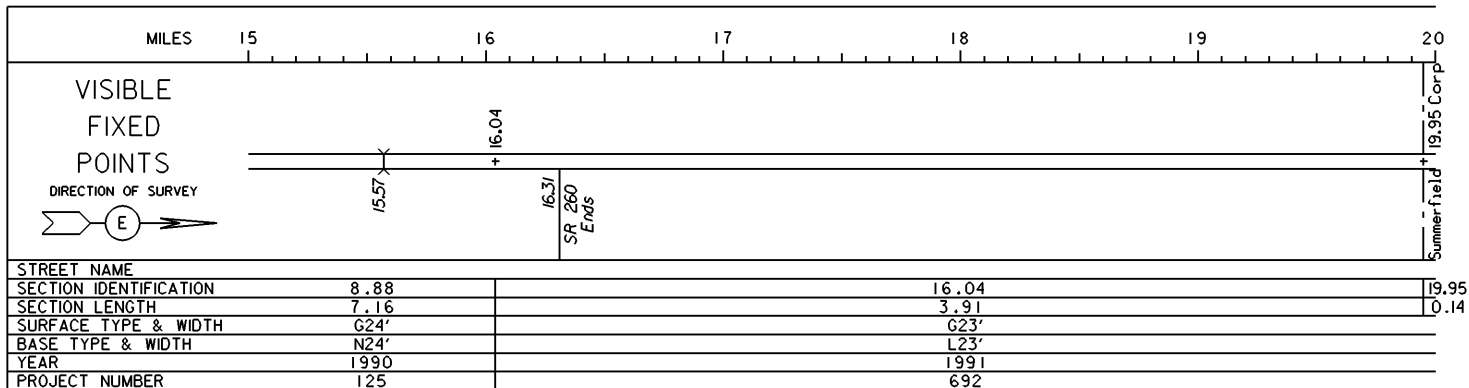
PERPETUATION

VISIBLE FIXED POINTS				SR 147 Begins 12.51		
STREET NAME						
SECTION IDENTIFICATION				8.88		
SECTION LENGTH				7.16		
SURFACE TYPE & WIDTH				G24'		
BASE TYPE & WIDTH				N24'		
YEAR				2005		
PROJECT NUMBER				611		

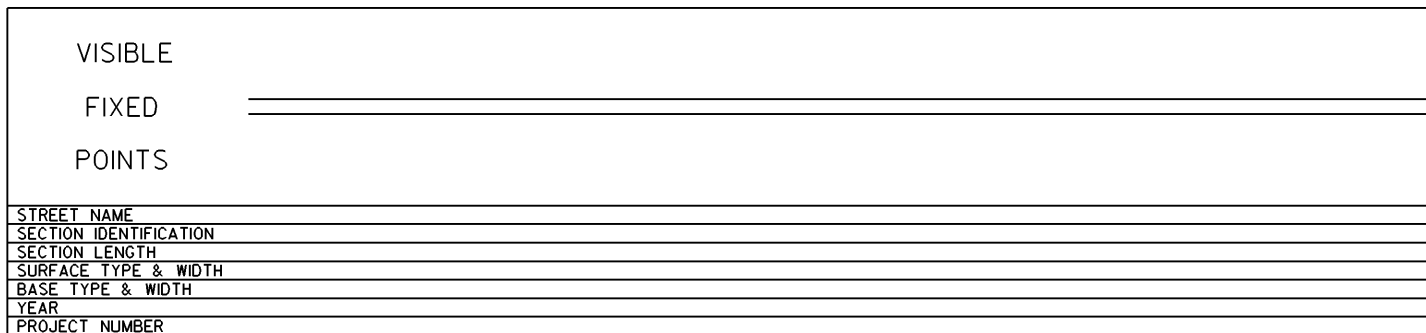
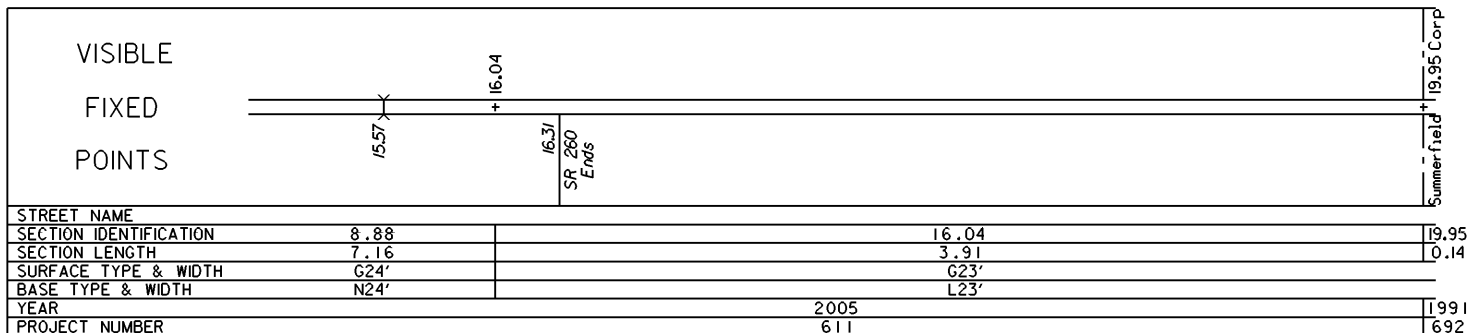
VISIBLE FIXED POINTS						
STREET NAME						
SECTION IDENTIFICATION						
SECTION LENGTH						
SURFACE TYPE & WIDTH						
BASE TYPE & WIDTH						
YEAR						
PROJECT NUMBER						

STATE OF OHIO - DEPARTMENT OF TRANSPORTATION
STATE ROUTE SECTIONS ON CONTINUOUS MILEAGE STATIONING

DISTRICT 10
COUNTY NOBLE
ROUTE SR 78



PERPETUATION



STATE OF OHIO - DEPARTMENT OF TRANSPORTATION

STATE ROUTE SECTIONS ON CONTINUOUS MILEAGE STATIONING

DISTRICT	10
COUNTY	NOBLE
ROUTE	SR 78

	MILES	20.00	20.50	21.00	21.50	22.00	22.50
VISIBLE FIXED POINTS DIRECTION OF SURVEY 	SR 146 Ends 20.09	Corp 20.24			CO 21.35	CO	
	+	+	+		+	+	
		Summerfield			NOBLE	MONROE	
STREET NAME							
SECTION IDENTIFICATION		19.95	20.09	20.24			
SECTION LENGTH		0.14	0.15	1.11			
SURFACE TYPE & WIDTH				G24'			
BASE TYPE & WIDTH				L24'			
YEAR				1990			
PROJECT NUMBER		692			125		

PERPETUATION

	MILES	20.00	20.50	21.00	21.50	22.00	22.50
VISIBLE FIXED POINTS	SR 146 Ends 20.09	Corp 20.24			CO 21.35	CO	
	+	+	+		+	+	
		Summerfield			NOBLE	MONROE	
STREET NAME							
SECTION IDENTIFICATION		19.95	20.09	20.24			
SECTION LENGTH		0.14	0.15	1.11			
SURFACE TYPE & WIDTH				G24'			
BASE TYPE & WIDTH				L24'			
YEAR		1991	1990	2005			
PROJECT NUMBER		692	125	611			

	MILES	20.00	20.50	21.00	21.50	22.00	22.50
VISIBLE FIXED POINTS							
STREET NAME							
SECTION IDENTIFICATION							
SECTION LENGTH							
SURFACE TYPE & WIDTH							
BASE TYPE & WIDTH							
YEAR							
PROJECT NUMBER							