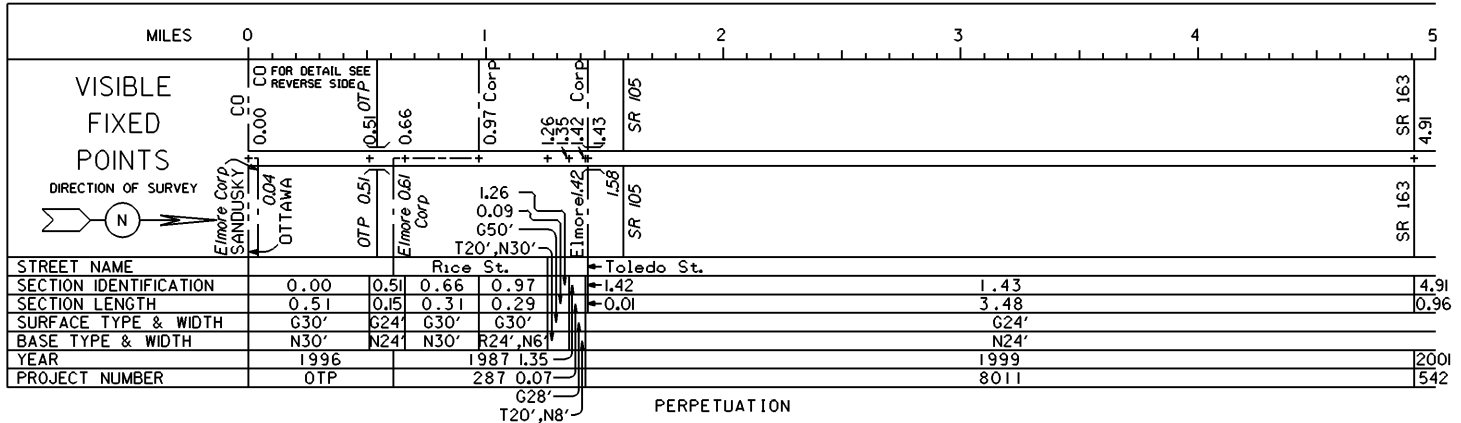


STATE OF OHIO - DEPARTMENT OF TRANSPORTATION

STATE ROUTE SECTIONS ON CONTINUOUS MILEAGE STATIONING

DISTRICT 2
 COUNTY OTTAWA
 ROUTE SR 51

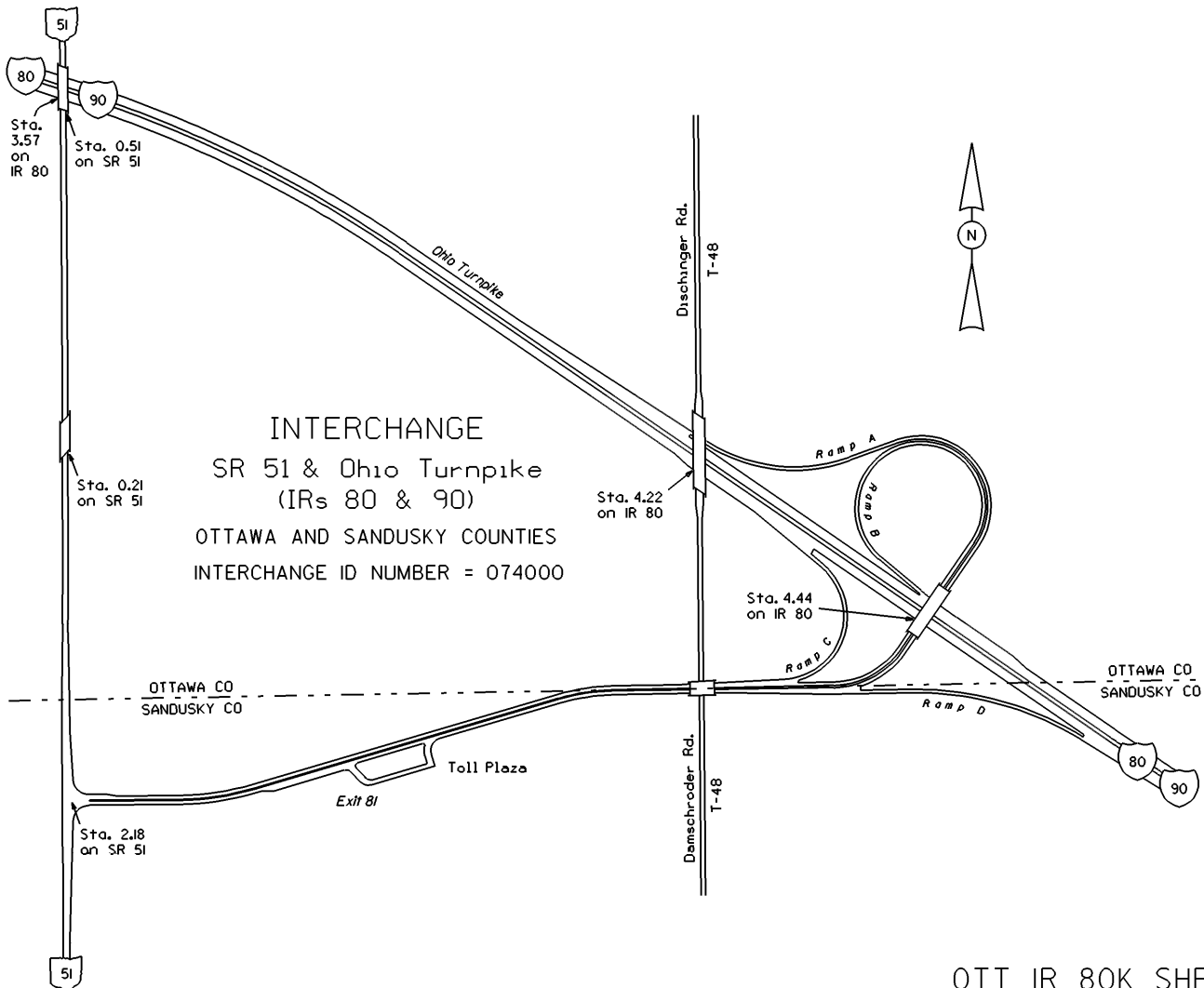


VISIBLE
 FIXED
 POINTS

STREET NAME	
SECTION IDENTIFICATION	
SECTION LENGTH	
SURFACE TYPE & WIDTH	
BASE TYPE & WIDTH	
YEAR	
PROJECT NUMBER	

VISIBLE
 FIXED
 POINTS

STREET NAME	
SECTION IDENTIFICATION	
SECTION LENGTH	
SURFACE TYPE & WIDTH	
BASE TYPE & WIDTH	
YEAR	
PROJECT NUMBER	

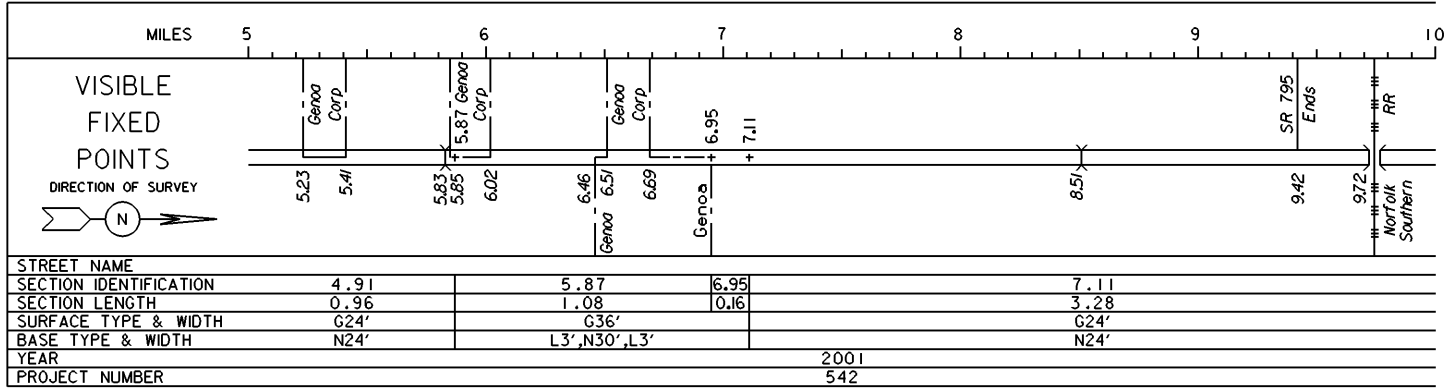


OTT IR 80K SHEET 1 OF 1
 OTT SR 51 SHEET 1 OF 3
 SAN IR 80K SHEET 1 OF 6
 SAN SR 51 SHEET 1 OF 1

STATE OF OHIO - DEPARTMENT OF TRANSPORTATION

STATE ROUTE SECTIONS ON CONTINUOUS MILEAGE STATIONING

DISTRICT	2
COUNTY	OTTAWA
ROUTE	SR 51



PERPETUATION

VISIBLE _____

FIXED _____

POINTS _____

STREET NAME					
SECTION IDENTIFICATION					
SECTION LENGTH					
SURFACE TYPE & WIDTH					
BASE TYPE & WIDTH					
YEAR					
PROJECT NUMBER					

VISIBLE _____

FIXED _____

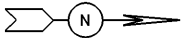
POINTS _____

STREET NAME					
SECTION IDENTIFICATION					
SECTION LENGTH					
SURFACE TYPE & WIDTH					
BASE TYPE & WIDTH					
YEAR					
PROJECT NUMBER					

STATE OF OHIO - DEPARTMENT OF TRANSPORTATION

STATE ROUTE SECTIONS ON CONTINUOUS MILEAGE STATIONING

DISTRICT 2
 COUNTY OTTAWA
 ROUTE SR 51

	MILES	10.00	10.20	10.40	10.60	10.80	11.00
VISIBLE FIXED POINTS DIRECTION OF SURVEY 	CO 10.39 + OTTAWA WOOD						
STREET NAME							
SECTION IDENTIFICATION		7.11					
SECTION LENGTH		3.28					
SURFACE TYPE & WIDTH		G24'					
BASE TYPE & WIDTH		N24'					
YEAR		2001					
PROJECT NUMBER		542					

PERPETUATION

	MILES	10.00	10.20	10.40	10.60	10.80	11.00
VISIBLE FIXED POINTS							
STREET NAME							
SECTION IDENTIFICATION							
SECTION LENGTH							
SURFACE TYPE & WIDTH							
BASE TYPE & WIDTH							
YEAR							
PROJECT NUMBER							

	MILES	10.00	10.20	10.40	10.60	10.80	11.00
VISIBLE FIXED POINTS							
STREET NAME							
SECTION IDENTIFICATION							
SECTION LENGTH							
SURFACE TYPE & WIDTH							
BASE TYPE & WIDTH							
YEAR							
PROJECT NUMBER							