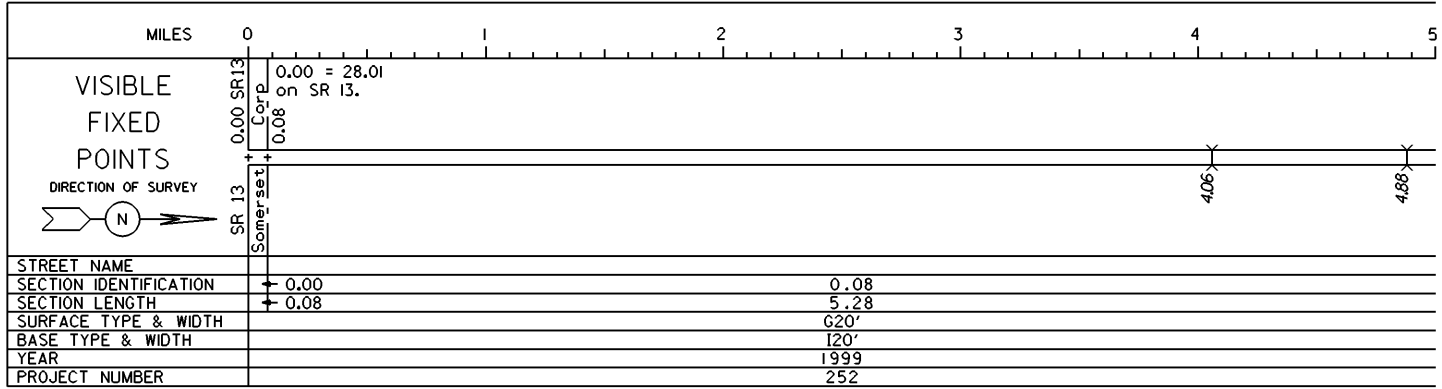


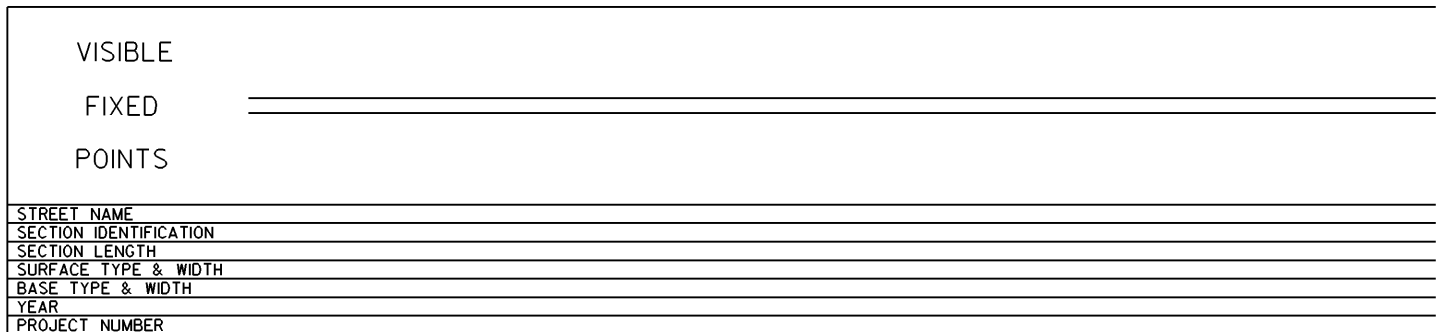
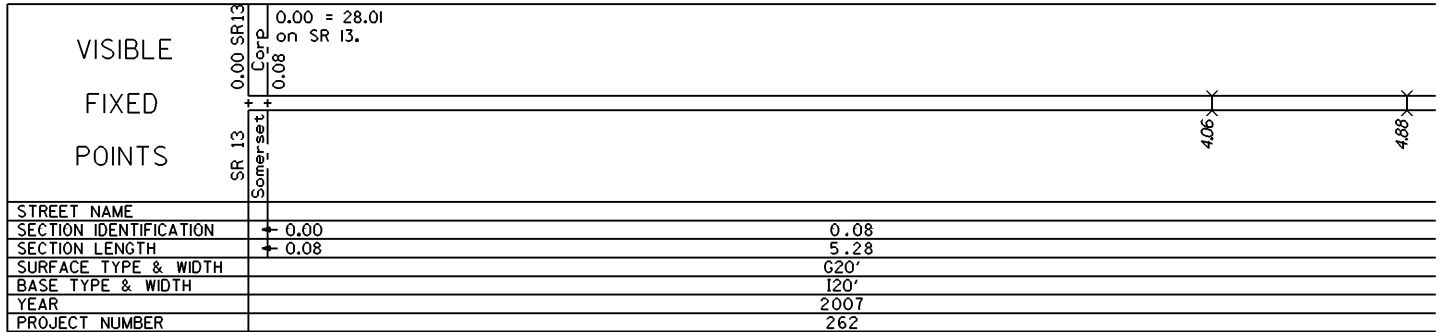
STATE OF OHIO - DEPARTMENT OF TRANSPORTATION

STATE ROUTE SECTIONS ON CONTINUOUS MILEAGE STATIONING

DISTRICT 5  
 COUNTY PERRY  
 ROUTE SR 757

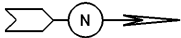


PERPETUATION



STATE OF OHIO - DEPARTMENT OF TRANSPORTATION  
STATE ROUTE SECTIONS ON CONTINUOUS MILEAGE STATIONING

DISTRICT 5  
COUNTY PERRY  
ROUTE SR 757

	MILES	5.00	5.20	5.40	5.60	5.80	6.00
VISIBLE FIXED POINTS  DIRECTION OF SURVEY 			+ 5.36 Corp		+ 5.65 Corp		5.68 = 9.42 on SR 204
			+ Glenford		+ Glenford		+ 5.68 SR 204
STREET NAME				Mill St.			
SECTION IDENTIFICATION		0.08		5.36		5.65	
SECTION LENGTH		5.28		0.29		0.03	
SURFACE TYPE & WIDTH			G20'				
BASE TYPE & WIDTH			120'				
YEAR			1999				
PROJECT NUMBER			252				

PERPETUATION

VISIBLE FIXED POINTS			+ 5.36 Corp		+ 5.65 Corp		5.68 = 9.42 on SR 204
			+ Glenford		+ Glenford		+ 5.68 SR 204
STREET NAME				Mill St.			
SECTION IDENTIFICATION		0.08		5.36		5.65	
SECTION LENGTH		5.28		0.29		0.03	
SURFACE TYPE & WIDTH			G20'				
BASE TYPE & WIDTH			120'				
YEAR			2007				
PROJECT NUMBER			262				

VISIBLE FIXED POINTS							
STREET NAME							
SECTION IDENTIFICATION							
SECTION LENGTH							
SURFACE TYPE & WIDTH							
BASE TYPE & WIDTH							
YEAR							
PROJECT NUMBER							