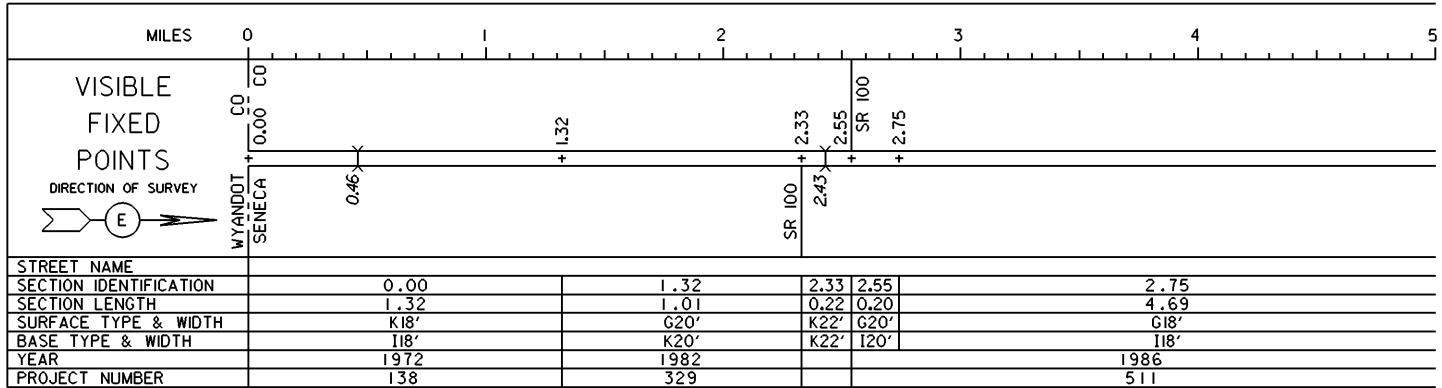


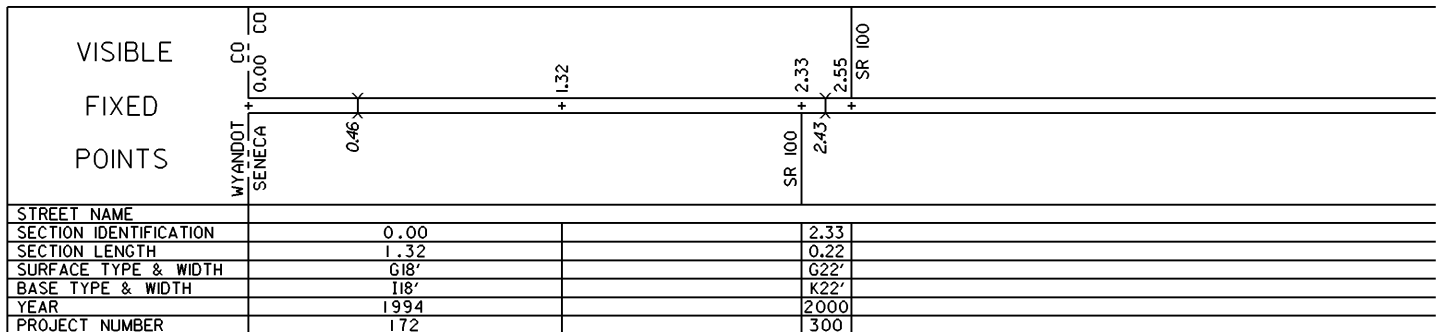
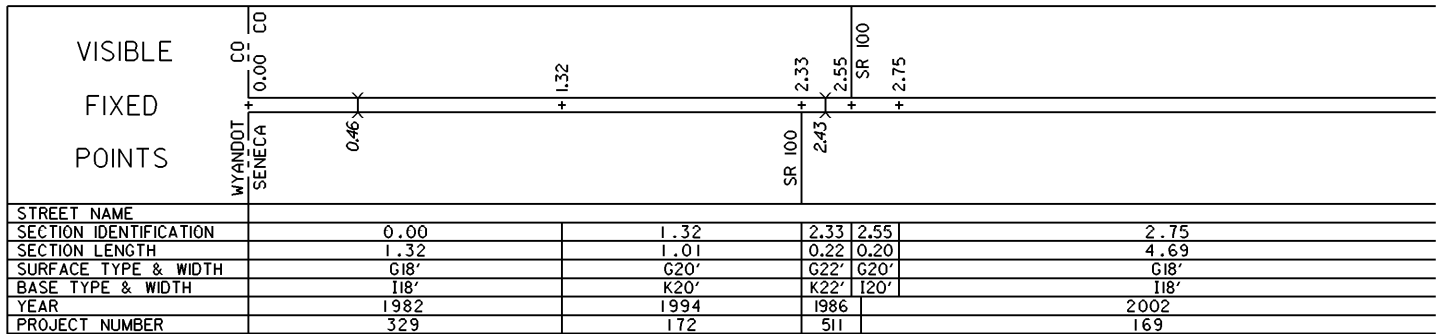
# STATE OF OHIO - DEPARTMENT OF TRANSPORTATION

STATE ROUTE SECTIONS ON CONTINUOUS MILEAGE STATIONING

DISTRICT	2
COUNTY	SENECA
ROUTE	SR 67

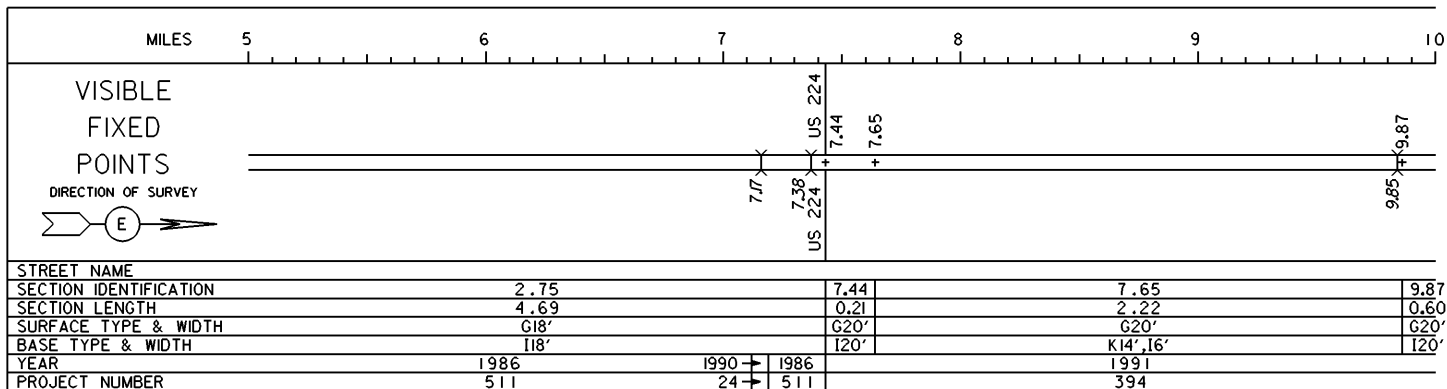


### PERPETUATION

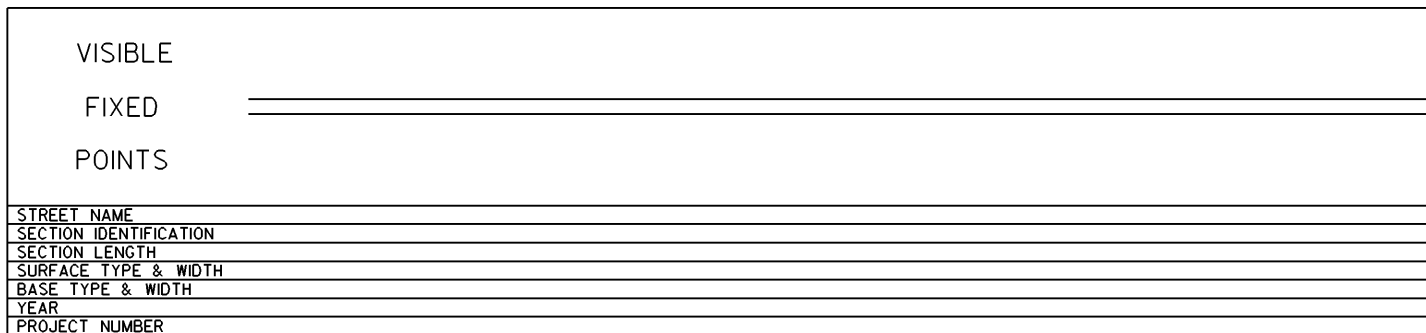
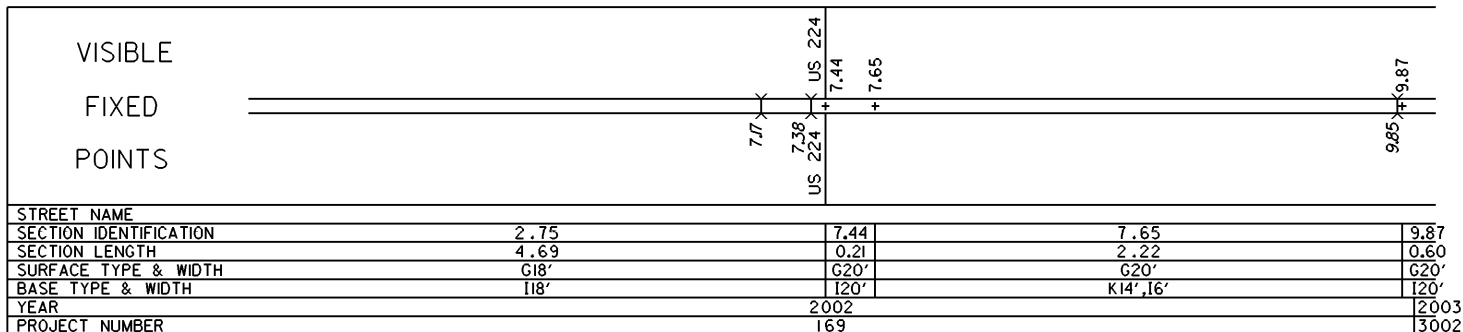


STATE OF OHIO - DEPARTMENT OF TRANSPORTATION  
STATE ROUTE SECTIONS ON CONTINUOUS MILEAGE STATIONING

DISTRICT 2  
COUNTY SENECA  
ROUTE SR 67



PERPETUATION



STATE OF OHIO - DEPARTMENT OF TRANSPORTATION

STATE ROUTE SECTIONS ON CONTINUOUS MILEAGE STATIONING

DISTRICT 2  
 COUNTY SENECA  
 ROUTE SR 67

MILES	10.00	10.50	11.00	11.50	12.00	12.50
VISIBLE FIXED POINTS	10.47 Corp		Overlap: See 22.96 to 23.08 on SR 18.	SR 18 11.08	SR 19 11.20	
	Republic	10.62 B&O				SR 162 Begins
DIRECTION OF SURVEY						
STREET NAME Kilbourne St.						
SECTION IDENTIFICATION	9.87	10.47				
SECTION LENGTH	0.60	0.61				
SURFACE TYPE & WIDTH	G20'	G20'				
BASE TYPE & WIDTH	120'	K18', 12'				
YEAR	1991					
PROJECT NUMBER	794					

PERPETUATION

VISIBLE FIXED POINTS	10.47 Corp		Overlap: See 22.94 to 23.06 on SR 18.	SR 18 11.08	SR 19 11.20	
	Republic	10.62 CSX				SR 162 Begins
STREET NAME Kilbourne St.						
SECTION IDENTIFICATION	9.87	10.47				
SECTION LENGTH	0.60	0.61				
SURFACE TYPE & WIDTH	G20'	G20'				
BASE TYPE & WIDTH	120'	K18', 12'				
YEAR	2003					
PROJECT NUMBER	3002					

VISIBLE FIXED POINTS						
STREET NAME						
SECTION IDENTIFICATION						
SECTION LENGTH						
SURFACE TYPE & WIDTH						
BASE TYPE & WIDTH						
YEAR						
PROJECT NUMBER						