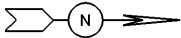


STATE OF OHIO - DEPARTMENT OF TRANSPORTATION

STATE ROUTE SECTIONS ON CONTINUOUS MILEAGE STATIONING

DISTRICT 4
 COUNTY STARK
 ROUTE IR 77

STATE LOG MILES	94.92	95	96	97	98	99	5
COUNTY LOG MILES	0.00			2	3	4	
<p>VISIBLE FIXED POINTS</p> <p>DIRECTION OF SURVEY</p>  <p>TUSCARAWAS CO Tuscarawas River STARK CO C-275 0.29 Gracemont St. C-276 2.20 Downing St. T-297 3.69 Brinker St. Fohl 4.73 C-252</p> <p>FOR DETAIL SEE REVERSE SIDE</p>							
STREET NAME							
SECTION IDENTIFICATION	0.00						
SECTION LENGTH	5.86						
SURFACE TYPE & WIDTH	G24'△G24'						
BASE TYPE & WIDTH	P24'△P24'						
YEAR	+ 1997	2002			2001 +		1986
PROJECT NUMBER	+ 695	3003			8 +		167

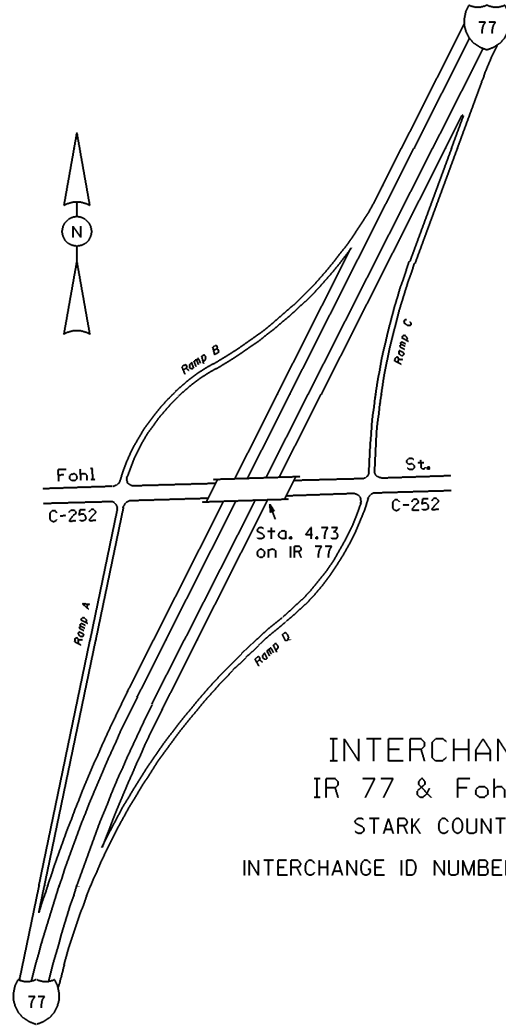
PERPETUATION

VISIBLE
 FIXED
 POINTS

STREET NAME							
SECTION IDENTIFICATION							
SECTION LENGTH							
SURFACE TYPE & WIDTH							
BASE TYPE & WIDTH							
YEAR							
PROJECT NUMBER							

VISIBLE
 FIXED
 POINTS

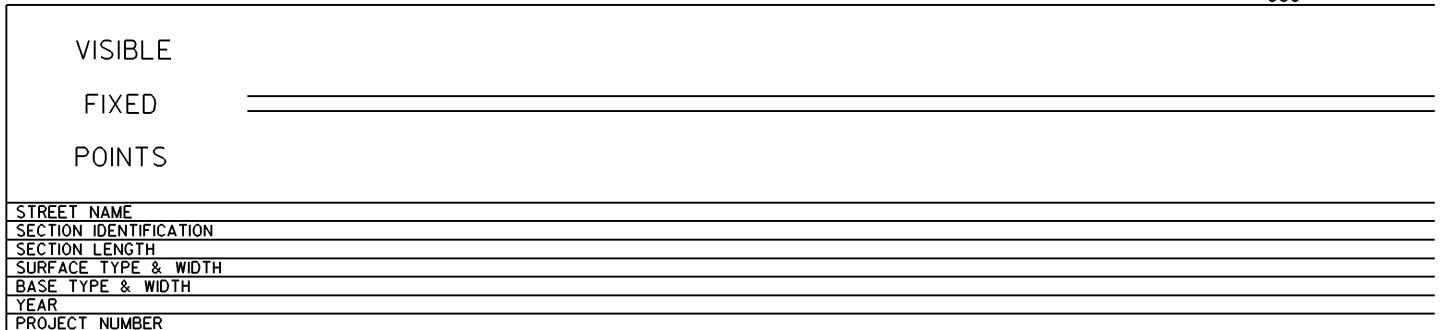
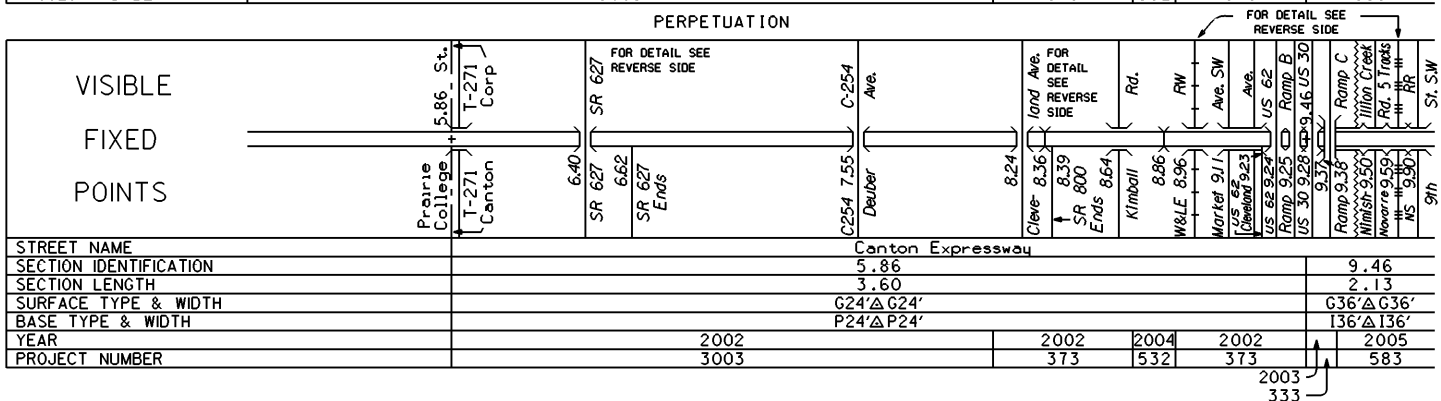
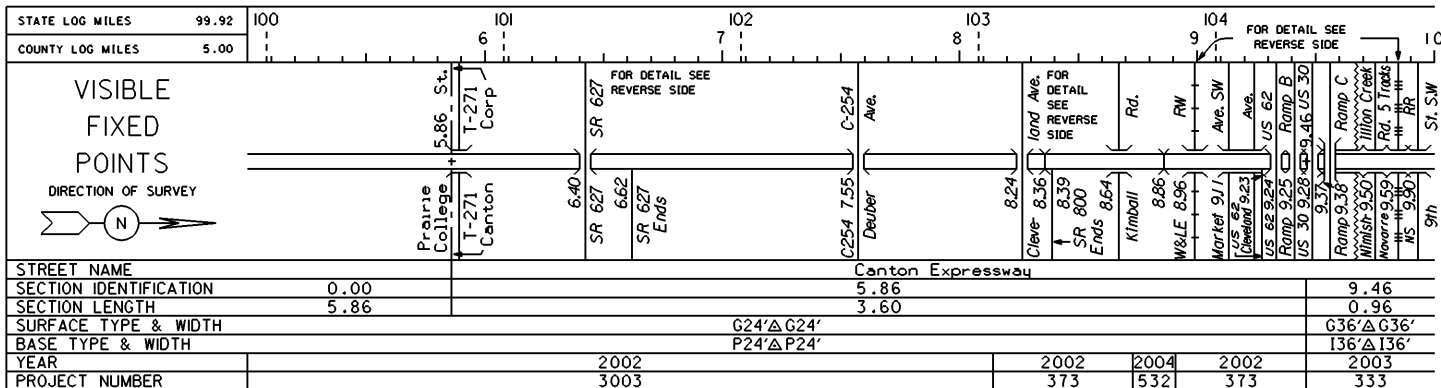
STREET NAME							
SECTION IDENTIFICATION							
SECTION LENGTH							
SURFACE TYPE & WIDTH							
BASE TYPE & WIDTH							
YEAR							
PROJECT NUMBER							

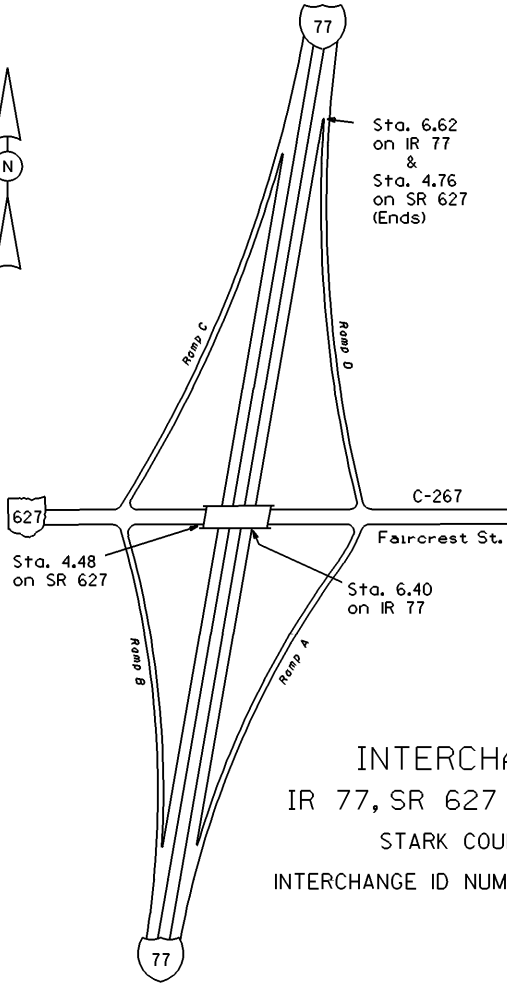


INTERCHANGE
IR 77 & Fohl St.
STARK COUNTY
INTERCHANGE ID NUMBER = 081000

STATE OF OHIO - DEPARTMENT OF TRANSPORTATION
STATE ROUTE SECTIONS ON CONTINUOUS MILEAGE STATIONING

DISTRICT 4
COUNTY STARK
ROUTE IR 77





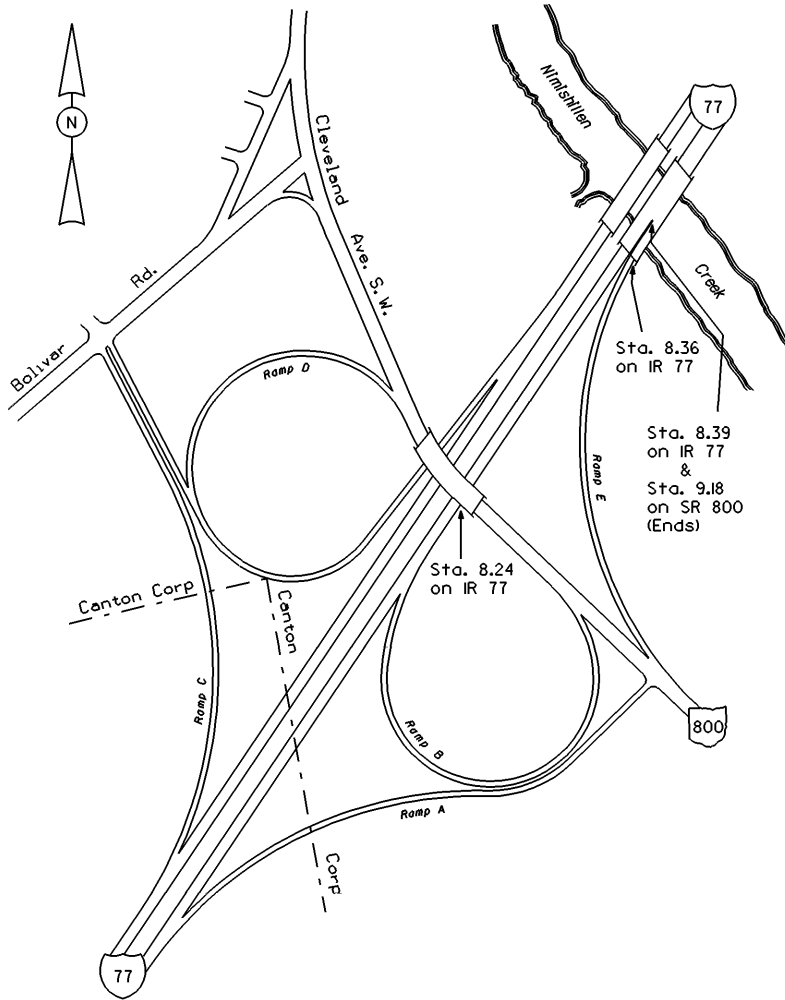
Sta. 6.62
on IR 77
&
Sta. 4.76
on SR 627
(Ends)

Sta. 4.48
on SR 627

Sta. 6.40
on IR 77

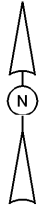
INTERCHANGE
IR 77, SR 627 & C-267
STARK COUNTY
INTERCHANGE ID NUMBER = 081100

IR77 SHEET 2 OF 4
SR627 SHEET 1 OF 1

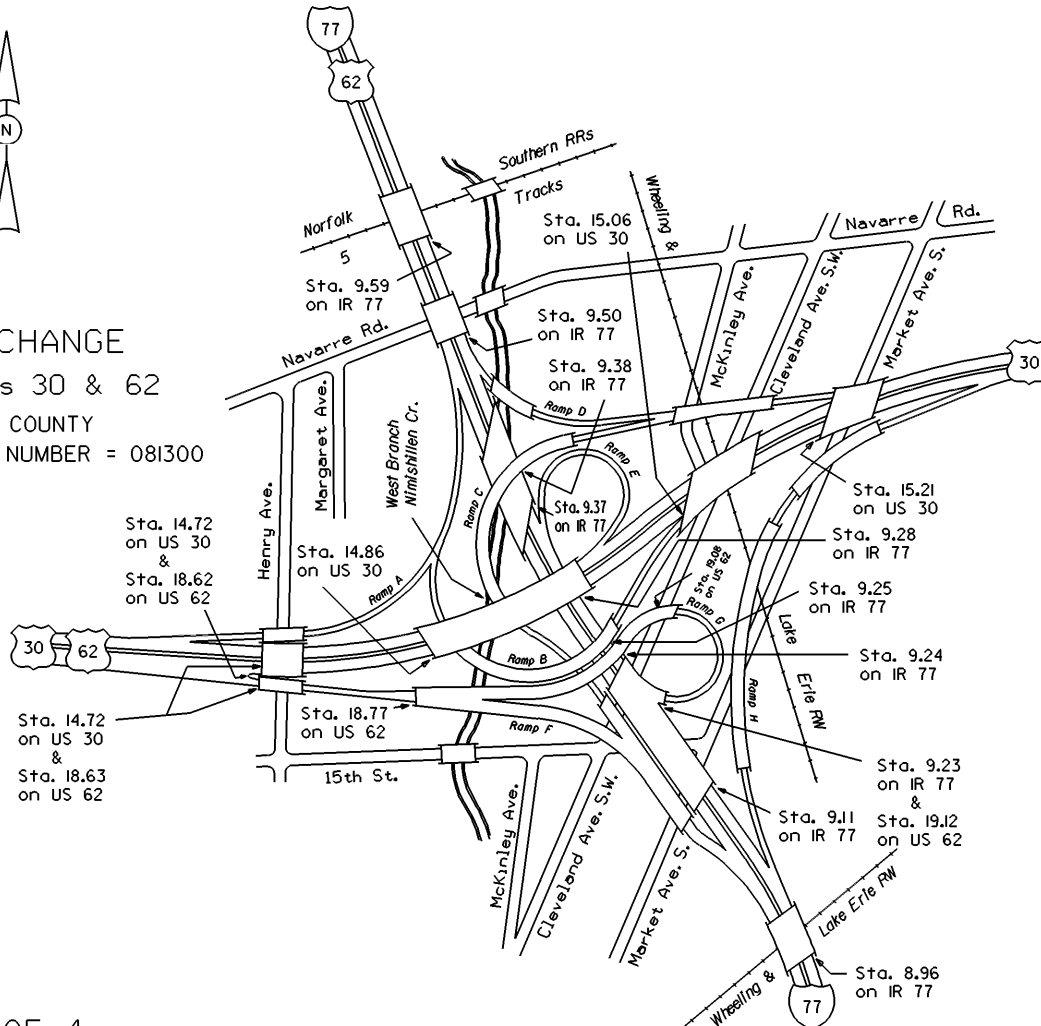


INTERCHANGE
 IR 77, SR 800 &
 Cleveland Ave. S.W.
 STARK COUNTY

INTERCHANGE ID NUMBER = 081200



INTERCHANGE
IR 77, USs 30 & 62
STARK COUNTY
INTERCHANGE ID NUMBER = 081300

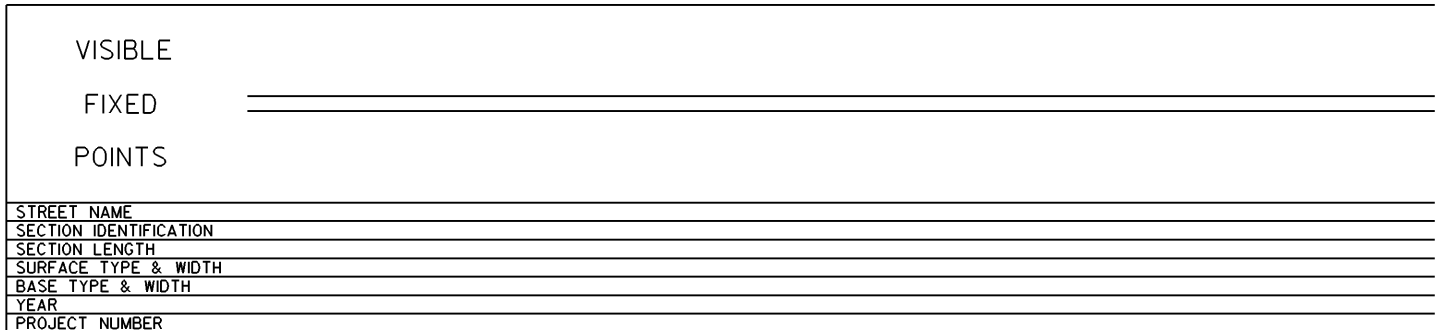
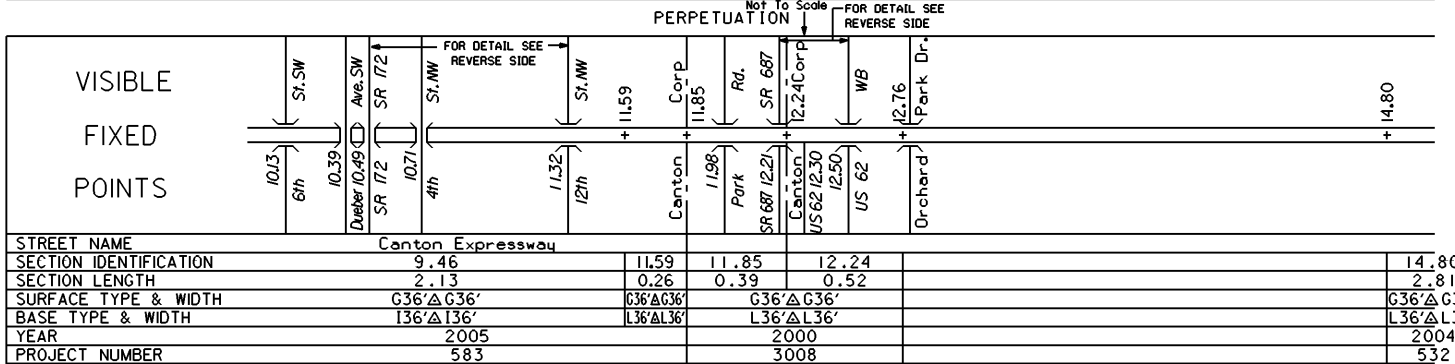
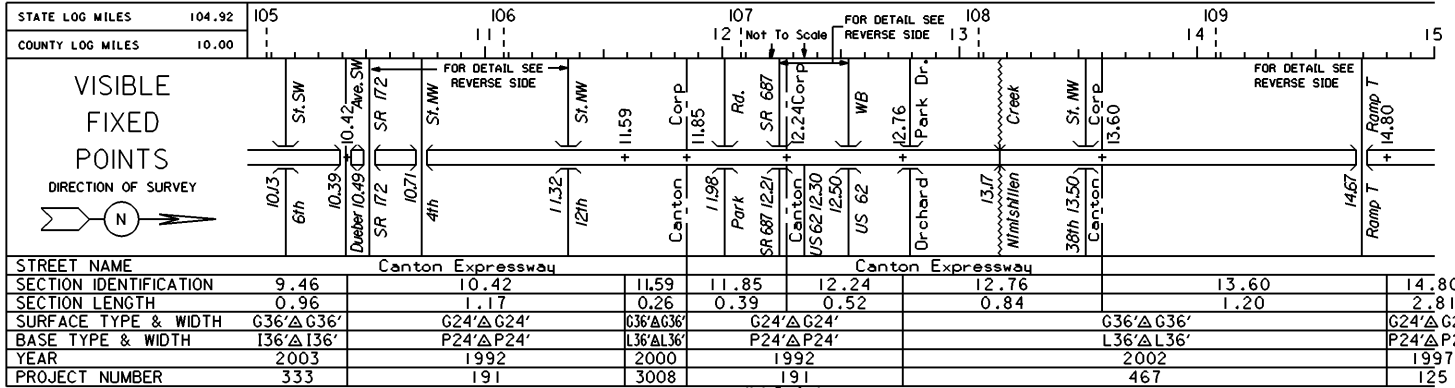


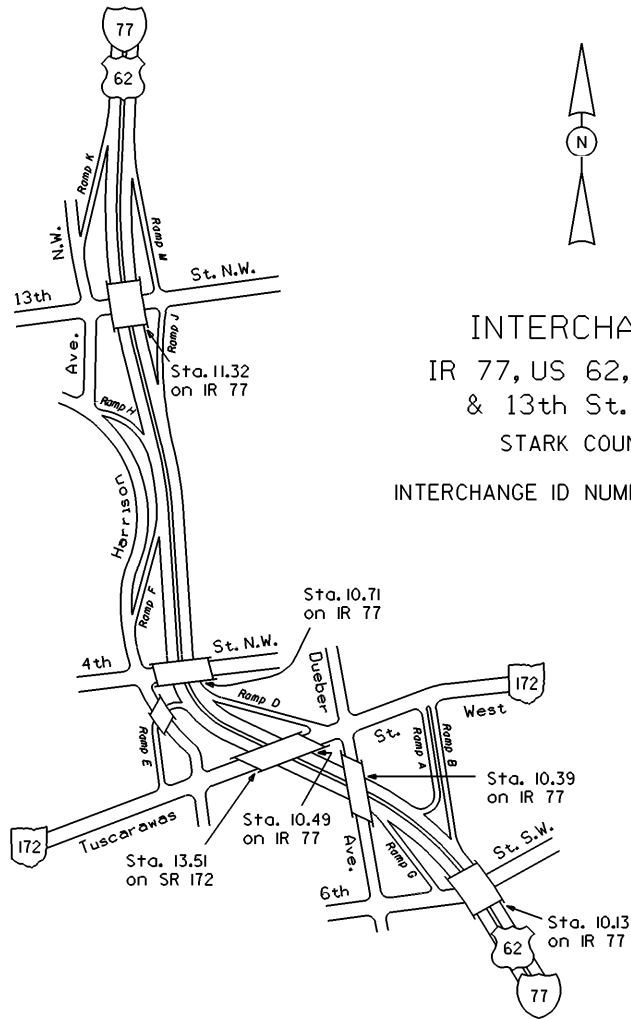
IR77 SHEET 2 OF 4
US30 SHEET 3 OF 7
US30 SHEET 4 OF 7
US62 SHEET 4 OF 8

STATE OF OHIO - DEPARTMENT OF TRANSPORTATION

STATE ROUTE SECTIONS ON CONTINUOUS MILEAGE STATIONING

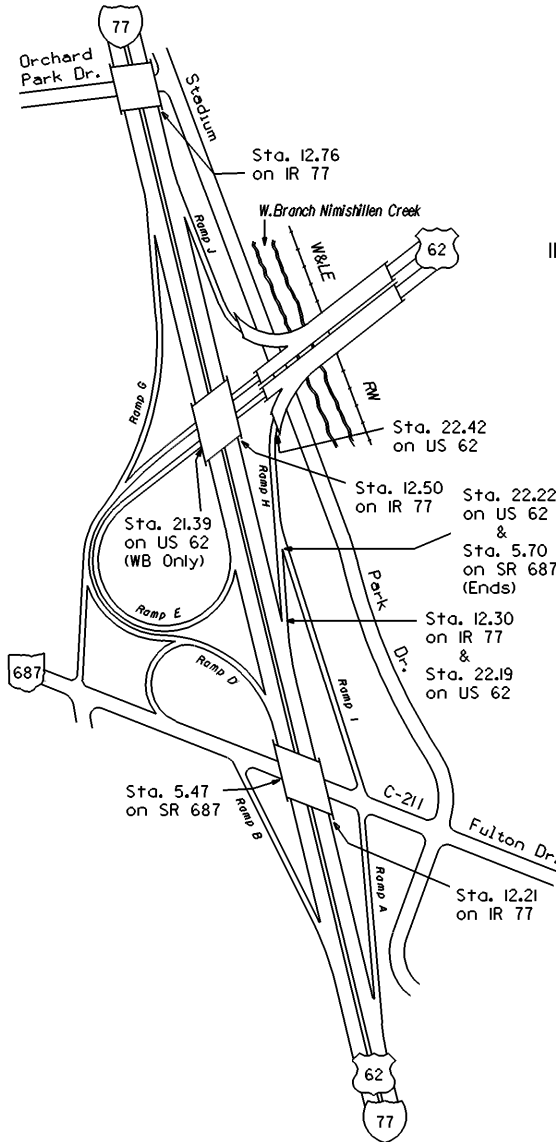
DISTRICT 4
 COUNTY STARK
 ROUTE IR 77



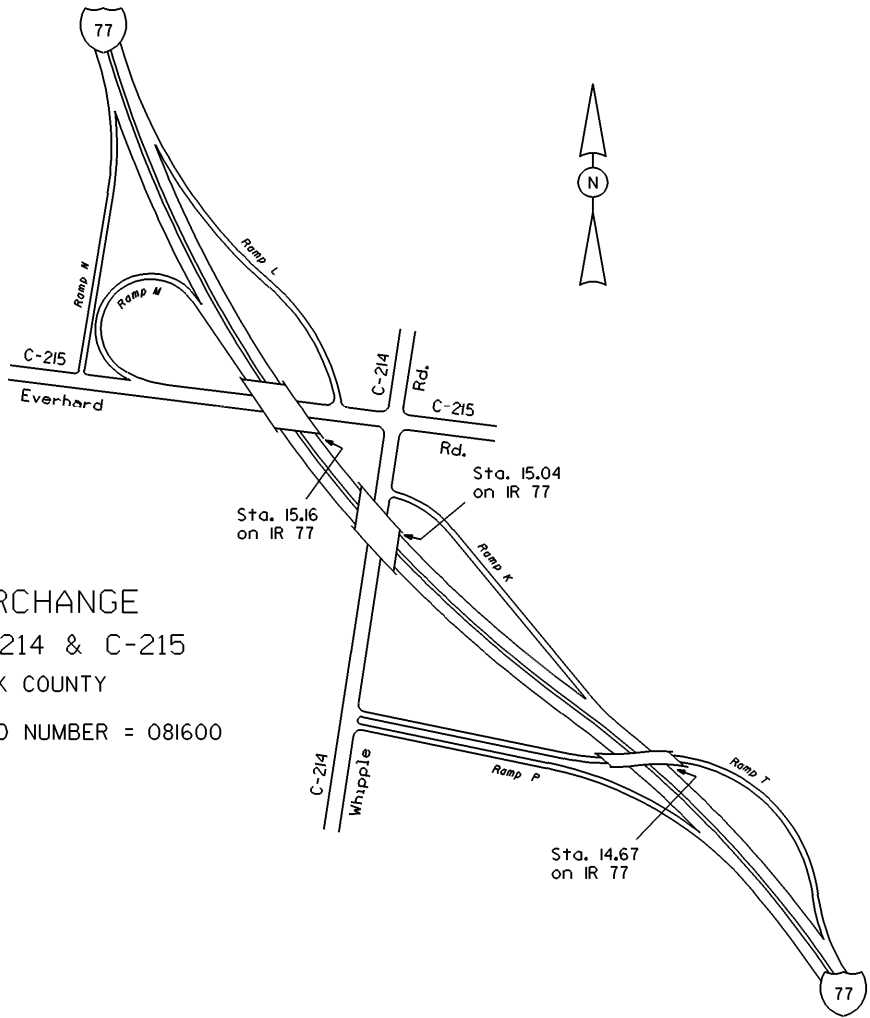


INTERCHANGE
 IR 77, US 62, SR 172
 & 13th St. N.W.
 STARK COUNTY

INTERCHANGE ID NUMBER = 081400



INTERCHANGE
IR 77, US 62, SR 687
& Fulton Dr. (C-211)
STARK COUNTY
INTERCHANGE ID NUMBER = 081500



INTERCHANGE
 IR 77, C-214 & C-215
 STARK COUNTY
 INTERCHANGE ID NUMBER = 081600

STATE OF OHIO - DEPARTMENT OF TRANSPORTATION

STATE ROUTE SECTIONS ON CONTINUOUS MILEAGE STATIONING

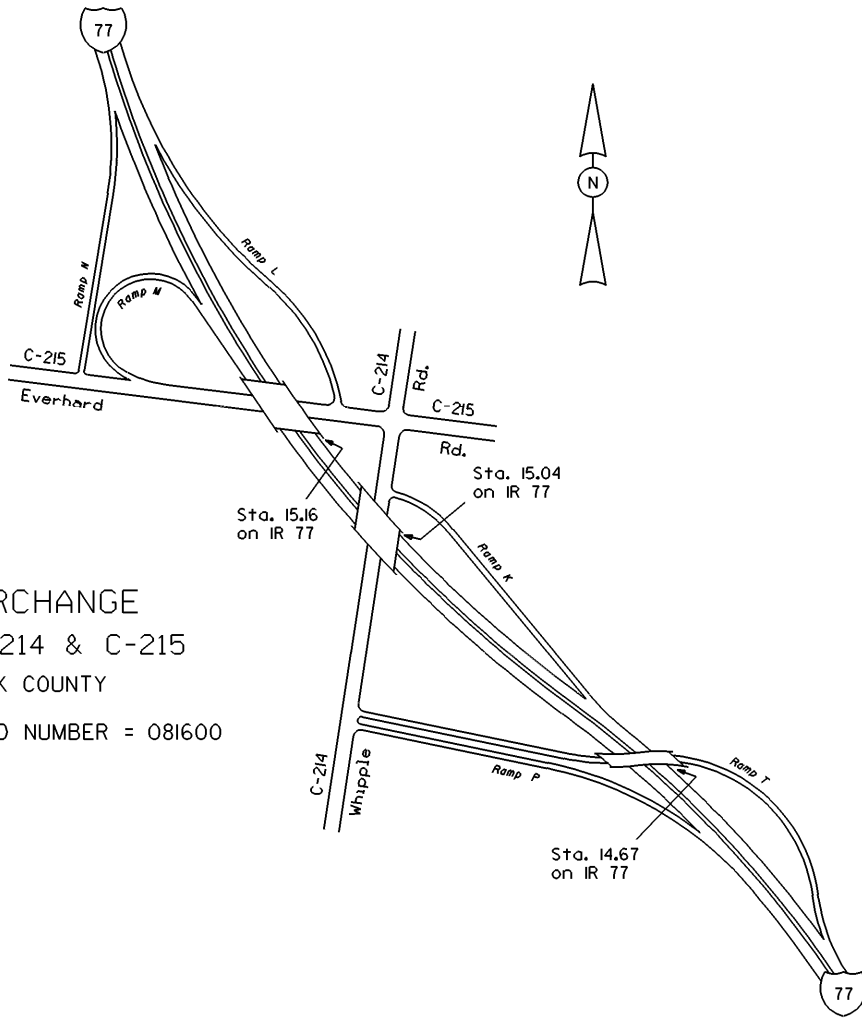
DISTRICT	4
COUNTY	STARK
ROUTE	1R 77

STATE LOG MILES	109.92	110	111	112	113	18	19	20
COUNTY LOG MILES	15.00							
VISIBLE FIXED POINTS DIRECTION OF SURVEY 	Rd. C-214 Whipple C214 15.04 15.16 C-215 Everhard C-98 15.74 Dressler Rd.	FOR DETAIL SEE REVERSE SIDE C-228 St. Portage C-190 17.25 Applegate St.	FOR DETAIL SEE REVERSE SIDE C-230 Rd. Shuffel Mt.Pleasant STA 18.53 SUMMIT C-7 18.54 CO C-7	+ 17.61	+ 17.61	+ 17.61	+ 17.61	+ 17.61
STREET NAME								
SECTION IDENTIFICATION		14.80				17.61		
SECTION LENGTH		2.81				0.93		
SURFACE TYPE & WIDTH		G24' Δ G24'				G24' Δ G24'		
BASE TYPE & WIDTH		P24' Δ P24'				P24' Δ P24'		
YEAR		1997				1991		
PROJECT NUMBER		125				771		

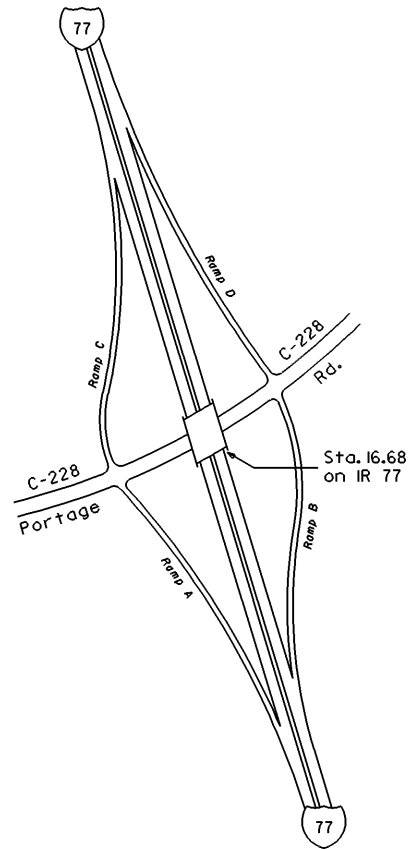
PERPETUATION

VISIBLE FIXED POINTS	Rd. C-214 Whipple C214 15.04 15.16 C-215 Everhard C-567 15.96 Relocated Dressler Rd.	FOR DETAIL SEE REVERSE SIDE C-228 St. Portage C-190 17.25 Applegate St.	FOR DETAIL SEE REVERSE SIDE C-230 Rd. Shuffel Mt.Pleasant STA 18.53 SUMMIT C-7 18.54 CO C-7	+ 17.61	+ 17.61	+ 17.61	+ 17.61	+ 17.61
STREET NAME								
SECTION IDENTIFICATION		14.80				17.61		
SECTION LENGTH		2.81				0.93		
SURFACE TYPE & WIDTH		G36' Δ G36'				G24' Δ G24'		
BASE TYPE & WIDTH		L36' Δ L36'				P24' Δ P24'		
YEAR		2004				1997		
PROJECT NUMBER		532				125		

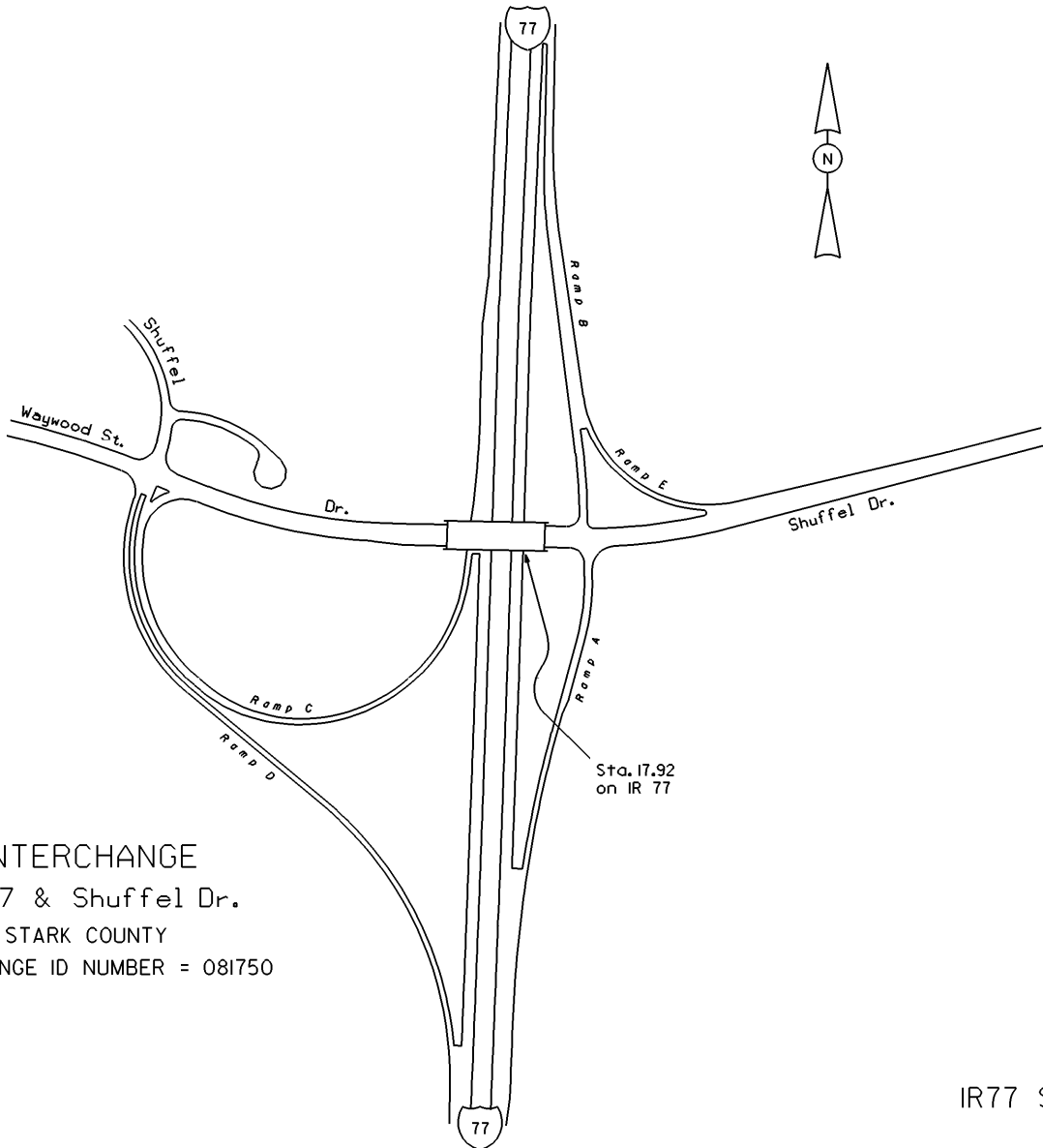
VISIBLE FIXED POINTS	+ 17.61	FOR DETAIL SEE REVERSE SIDE C-230 Rd. Shuffel Mt.Pleasant STA 18.53 SUMMIT C-7 18.54 CO C-7
STREET NAME		
SECTION IDENTIFICATION		17.61
SECTION LENGTH		0.93
SURFACE TYPE & WIDTH		G36' Δ G36'
BASE TYPE & WIDTH		L36' Δ L36'
YEAR		2001
PROJECT NUMBER		454



INTERCHANGE
 IR 77, C-214 & C-215
 STARK COUNTY
 INTERCHANGE ID NUMBER = 081600



INTERCHANGE
IR 77 & C-228
STARK COUNTY
INTERCHANGE ID NUMBER = 081700



INTERCHANGE
IR 77 & Shuffel Dr.
STARK COUNTY
INTERCHANGE ID NUMBER = 081750