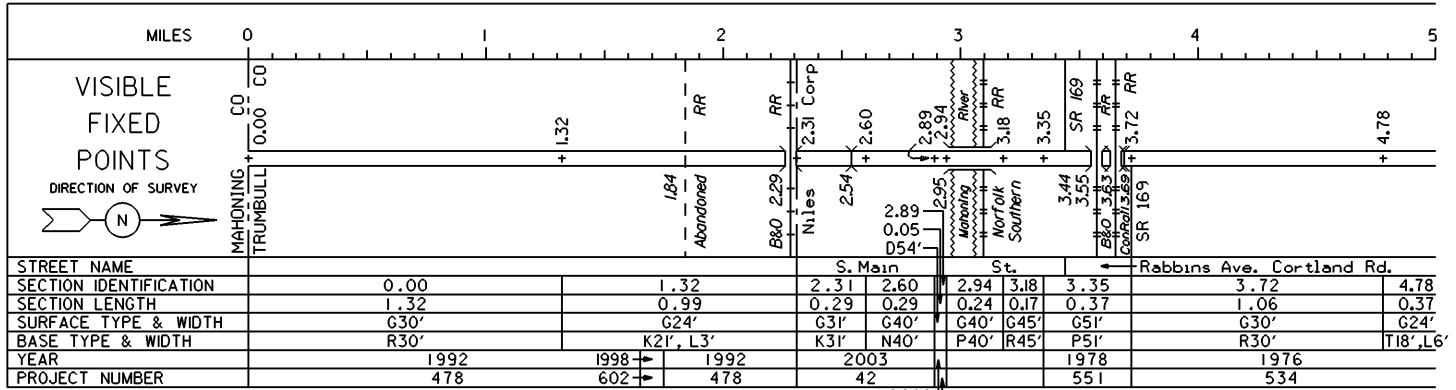


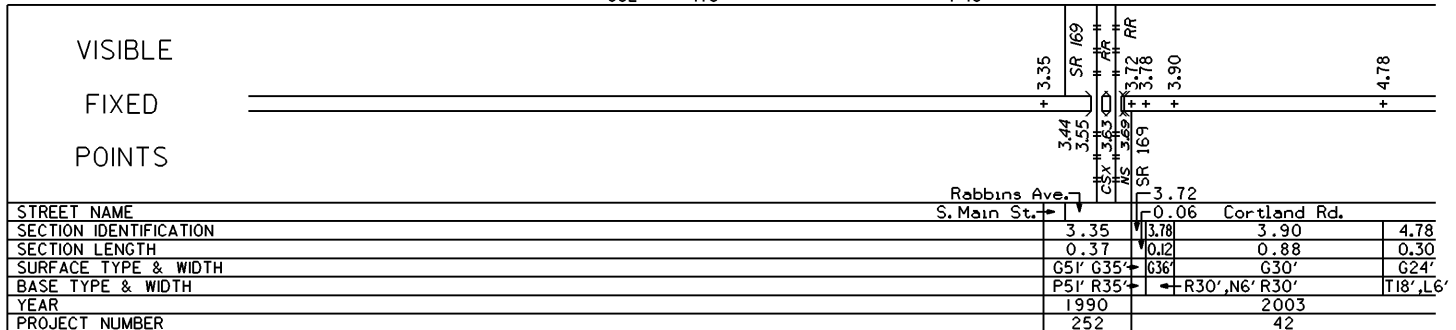
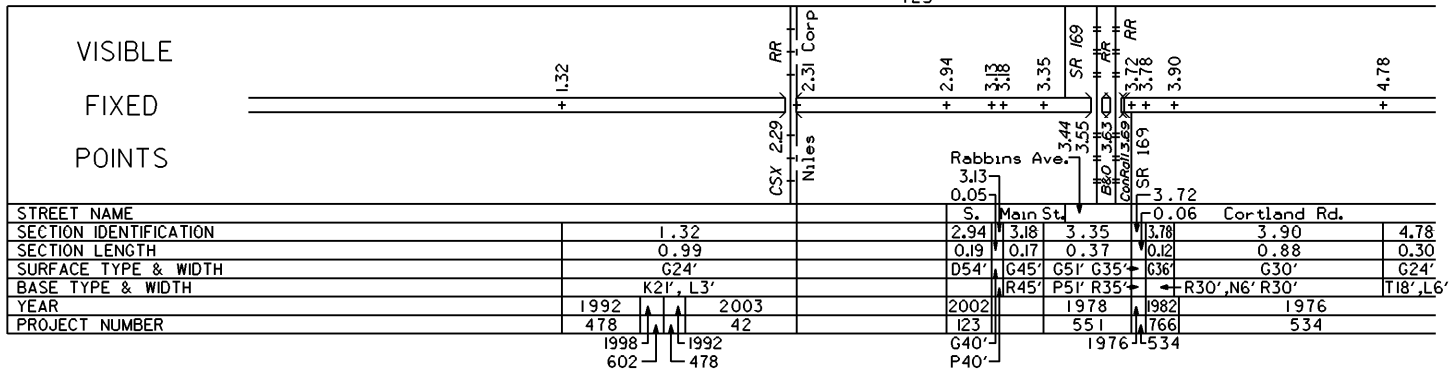
# STATE OF OHIO - DEPARTMENT OF TRANSPORTATION

STATE ROUTE SECTIONS ON CONTINUOUS MILEAGE STATIONING

DISTRICT	4
COUNTY	TRUMBULL
ROUTE	SR 46



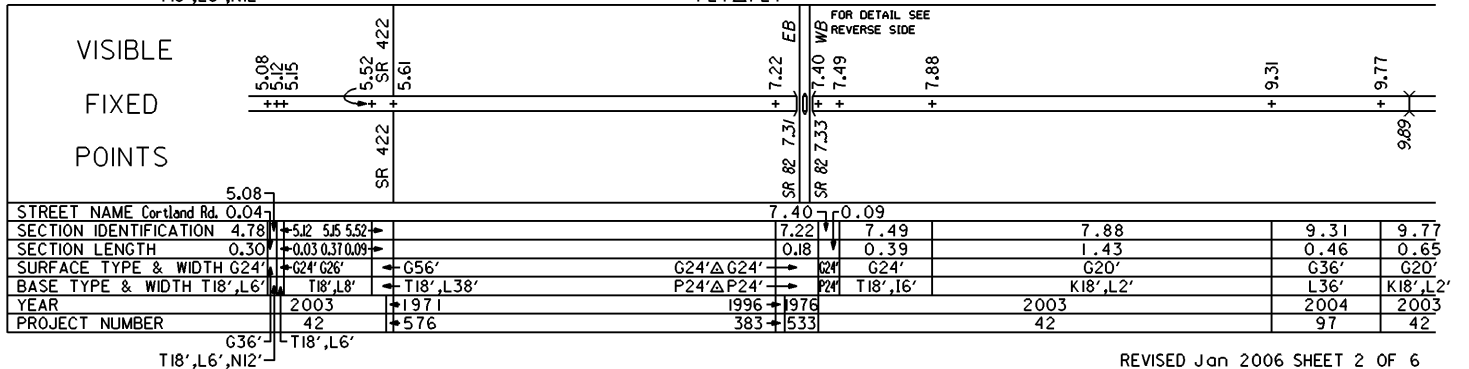
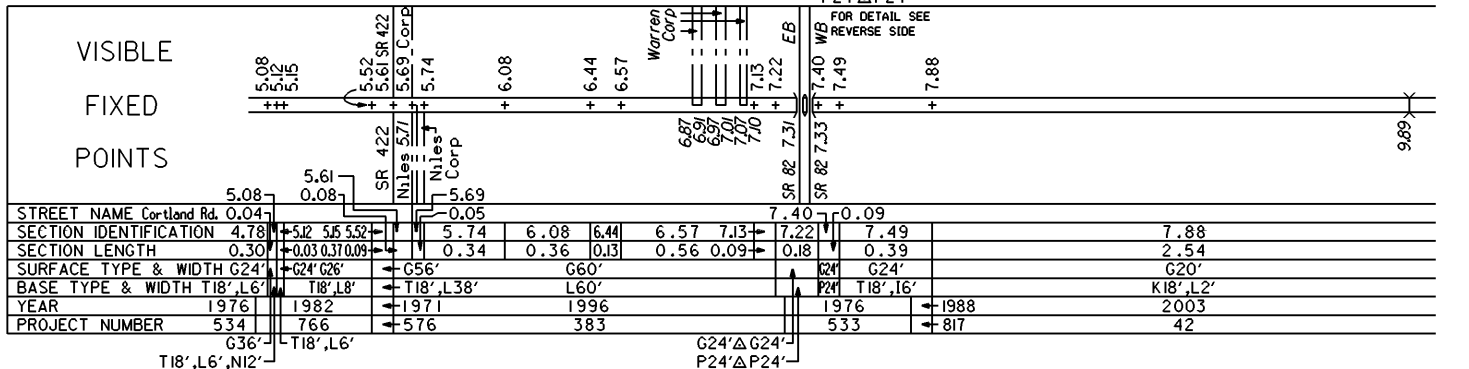
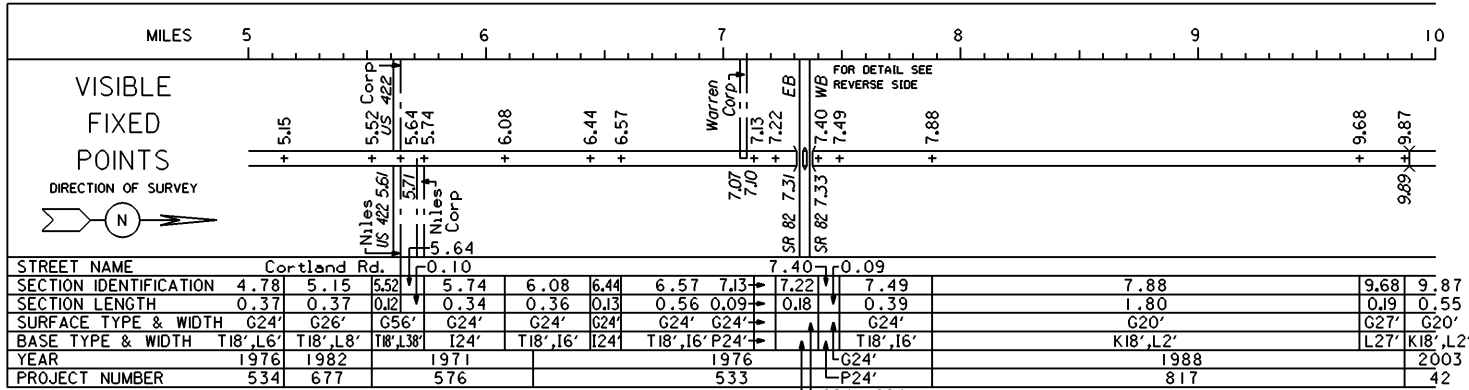
PERPETUATION

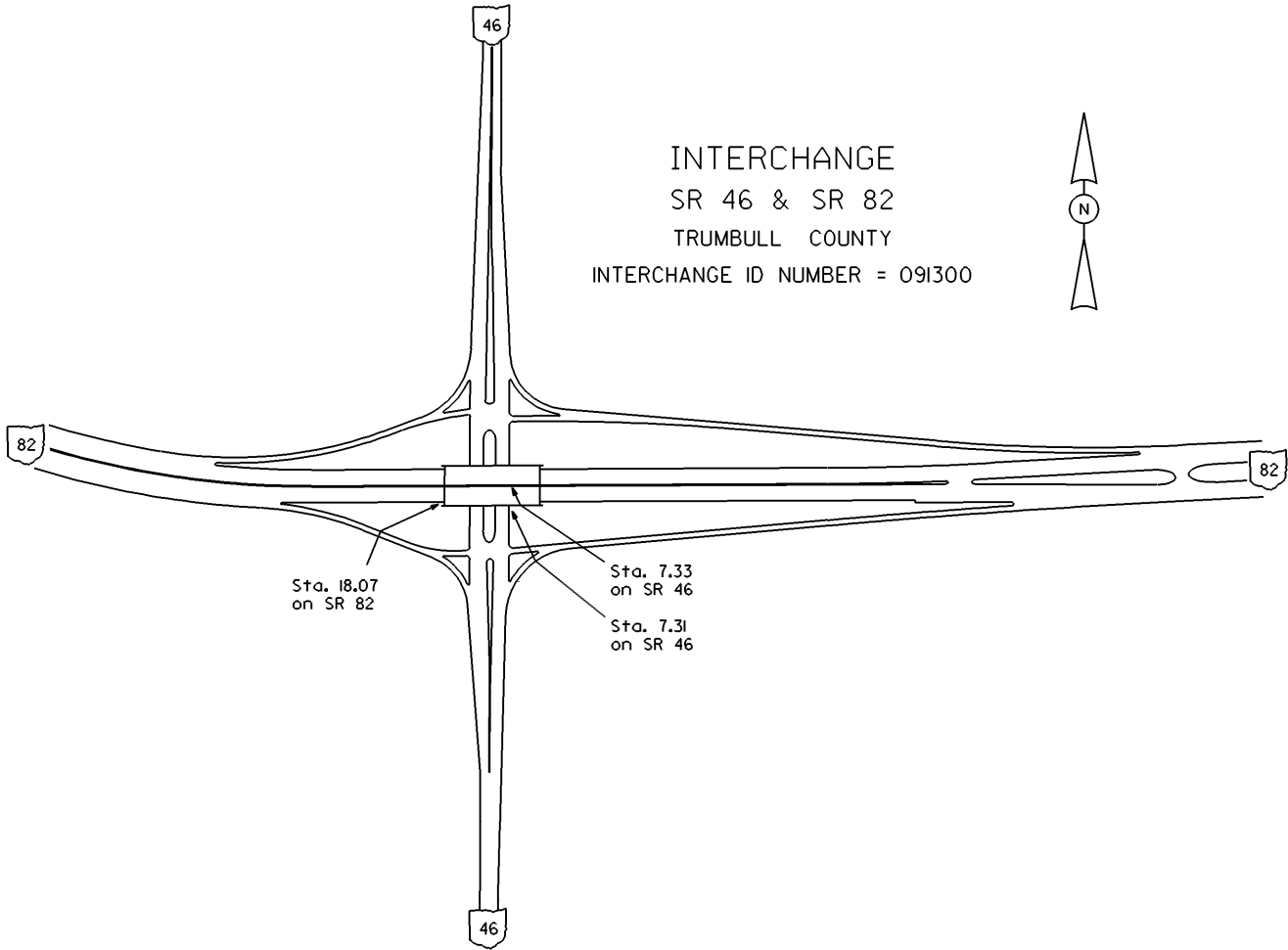


# STATE OF OHIO - DEPARTMENT OF TRANSPORTATION

STATE ROUTE SECTIONS ON CONTINUOUS MILEAGE STATIONING

DISTRICT  
COUNTY TRUMBULL  
ROUTE SR 46





INTERCHANGE  
SR 46 & SR 82  
TRUMBULL COUNTY  
INTERCHANGE ID NUMBER = 091300



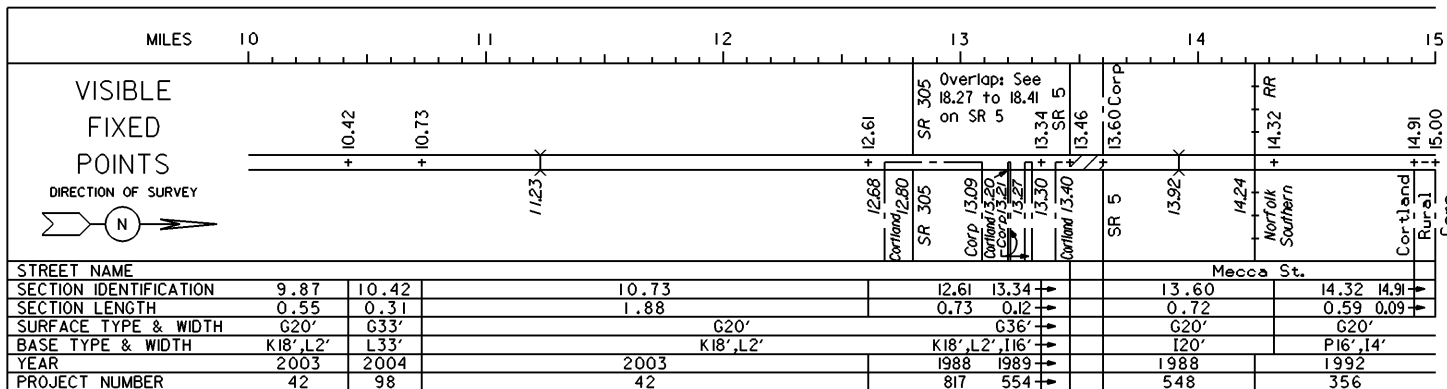
Sta. 18.07  
on SR 82

Sta. 7.33  
on SR 46

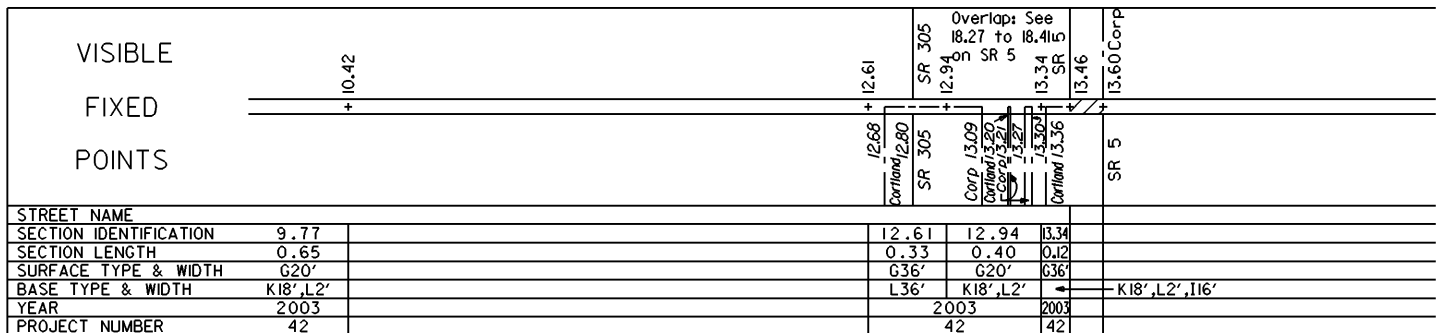
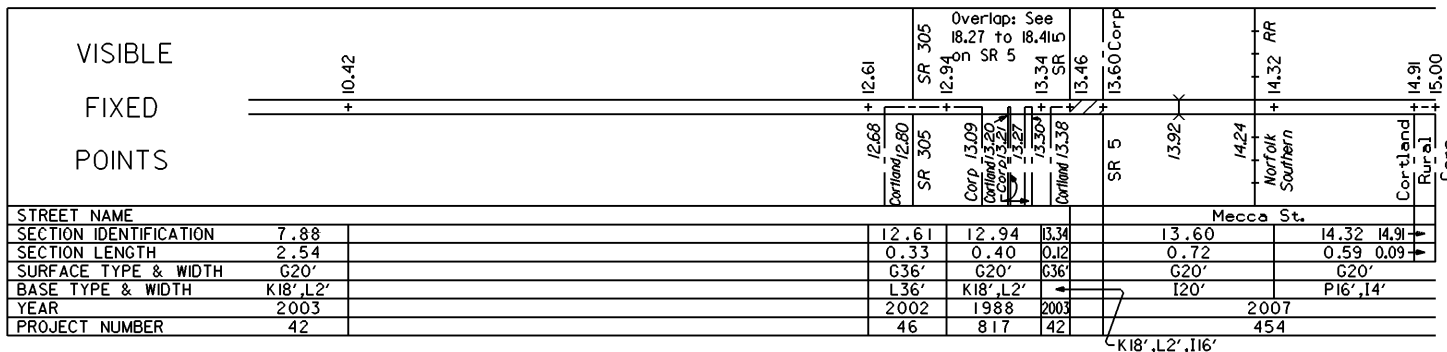
Sta. 7.31  
on SR 46

STATE OF OHIO - DEPARTMENT OF TRANSPORTATION  
STATE ROUTE SECTIONS ON CONTINUOUS MILEAGE STATIONING

DISTRICT 4  
COUNTY TRUMBULL  
ROUTE SR 46



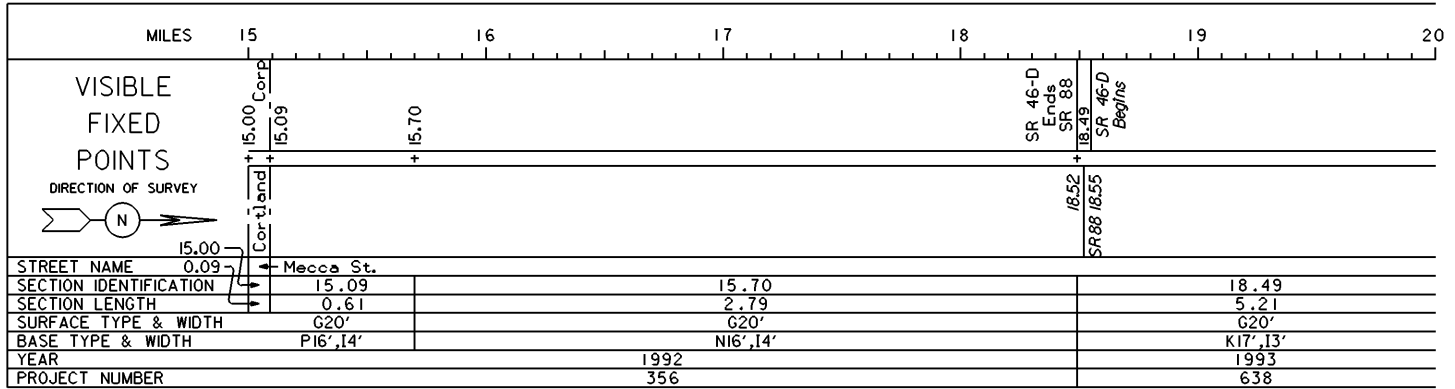
PERPETUATION



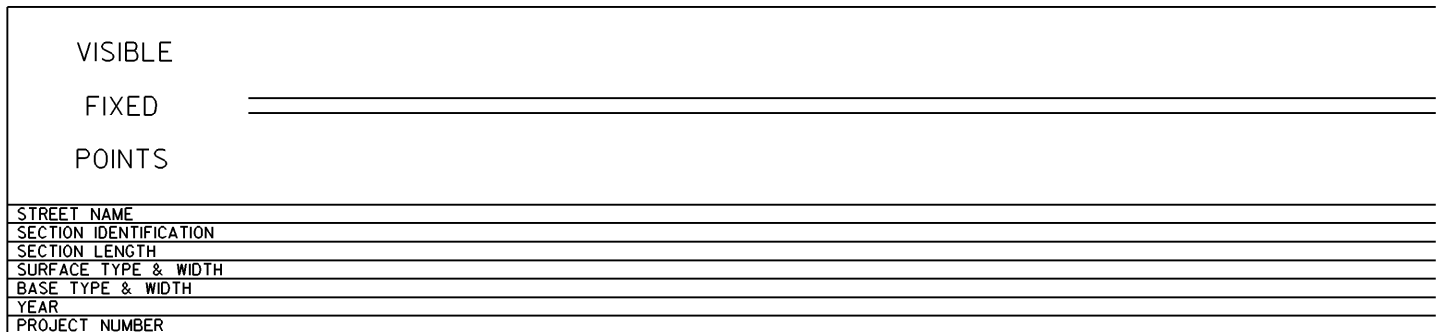
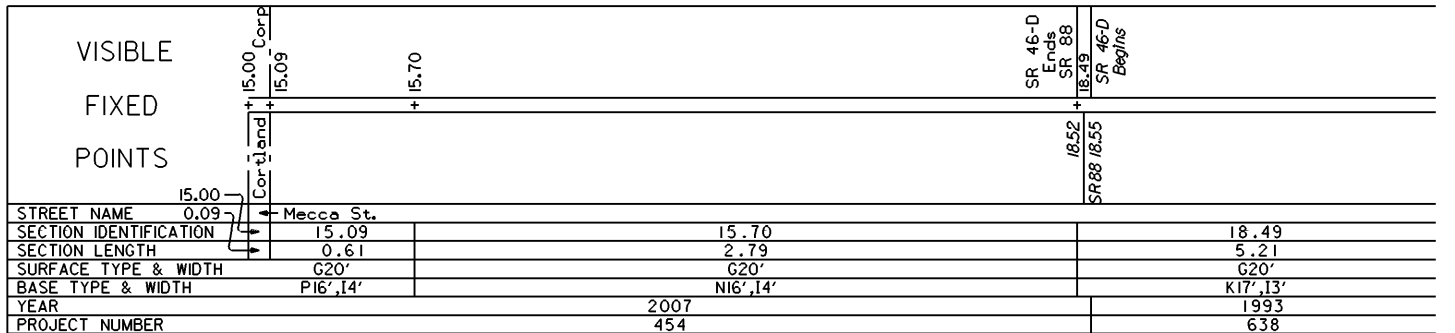
STATE OF OHIO - DEPARTMENT OF TRANSPORTATION

STATE ROUTE SECTIONS ON CONTINUOUS MILEAGE STATIONING

DISTRICT 4  
 COUNTY TRUMBULL  
 ROUTE SR 46

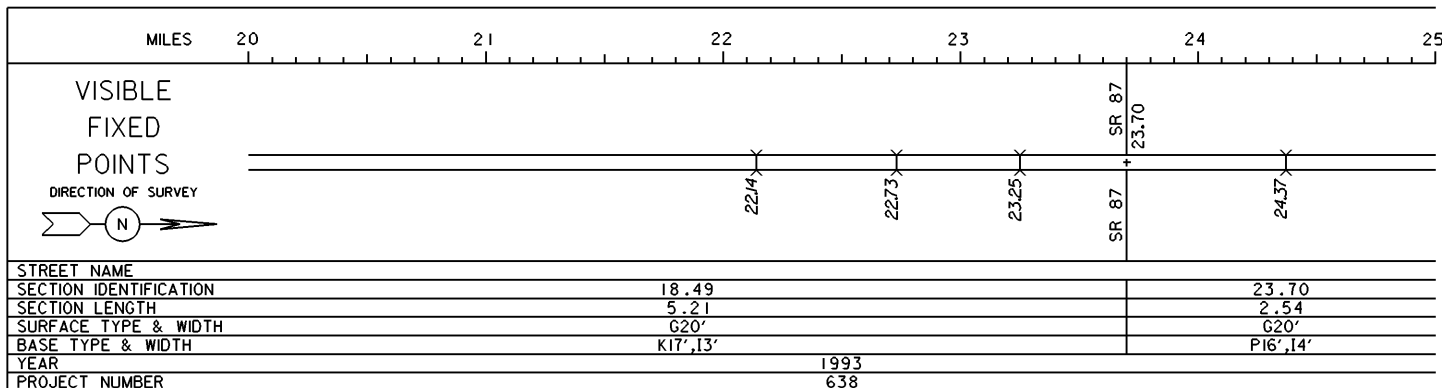


PERPETUATION

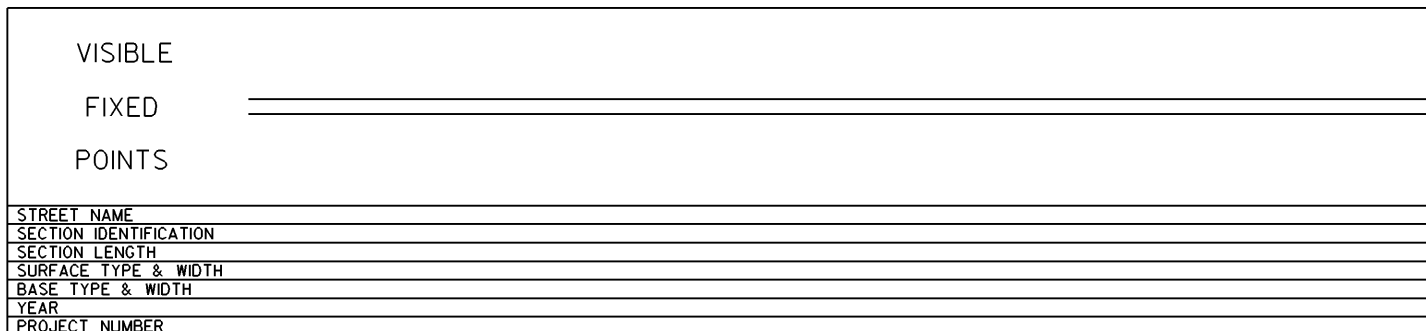
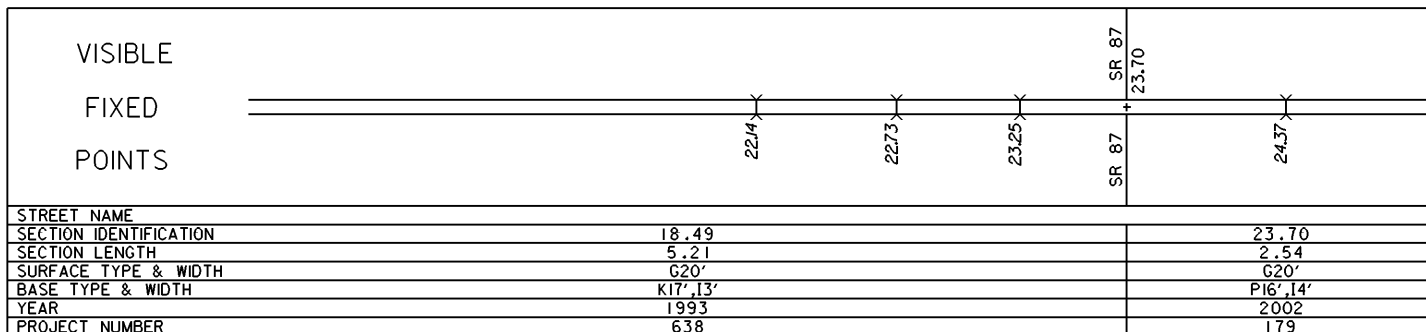


STATE OF OHIO - DEPARTMENT OF TRANSPORTATION  
STATE ROUTE SECTIONS ON CONTINUOUS MILEAGE STATIONING

DISTRICT 4  
COUNTY TRUMBULL  
ROUTE SR 46



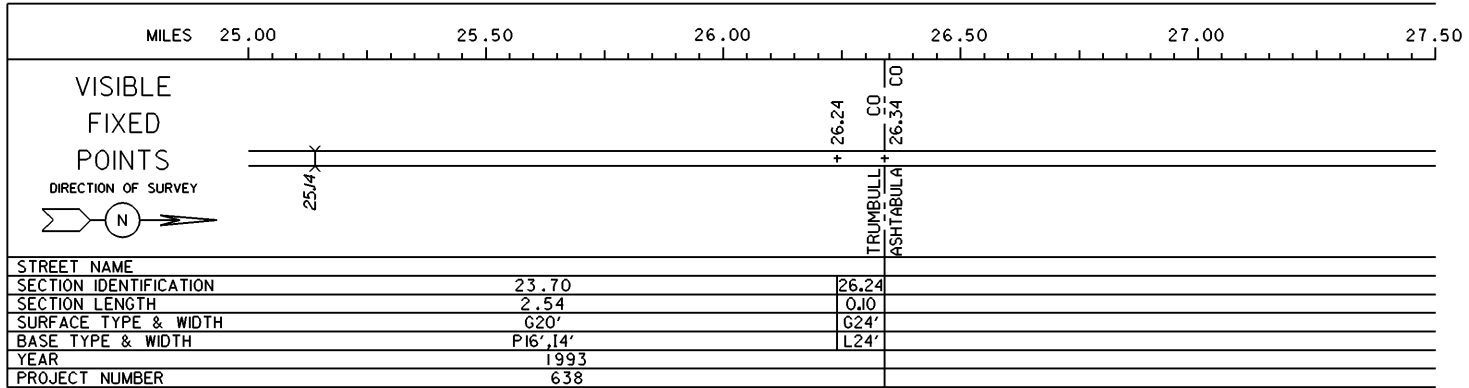
PERPETUATION



STATE OF OHIO - DEPARTMENT OF TRANSPORTATION

STATE ROUTE SECTIONS ON CONTINUOUS MILEAGE STATIONING

DISTRICT 4  
 COUNTY TRUMBULL  
 ROUTE SR 46



PERPETUATION

