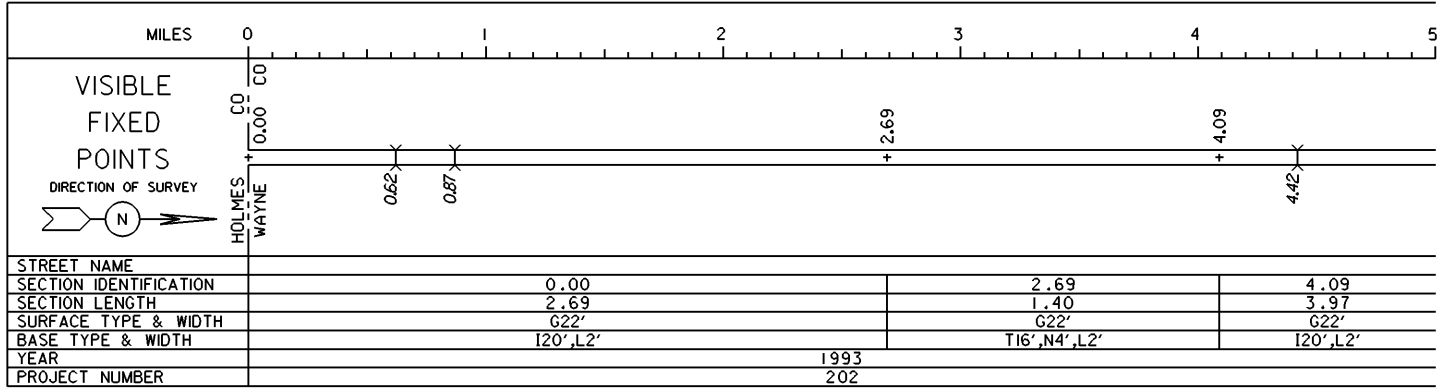


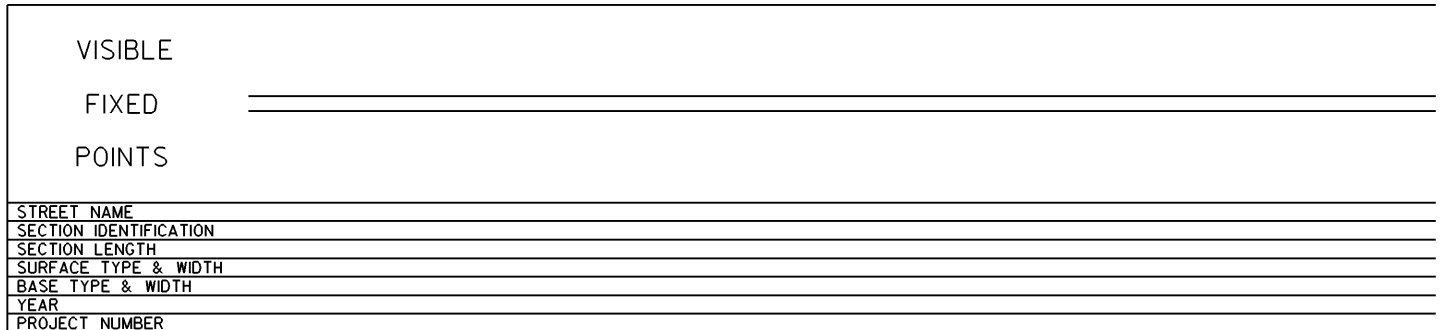
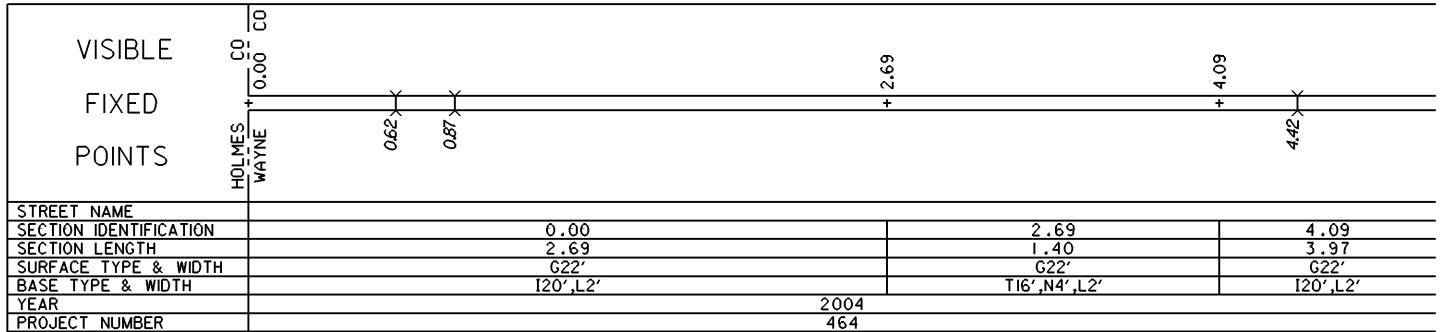
STATE OF OHIO - DEPARTMENT OF TRANSPORTATION

STATE ROUTE SECTIONS ON CONTINUOUS MILEAGE STATIONING

DISTRICT	3
COUNTY	WAYNE
ROUTE	SR 83

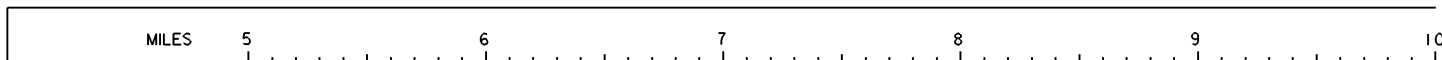


PERPETUATION

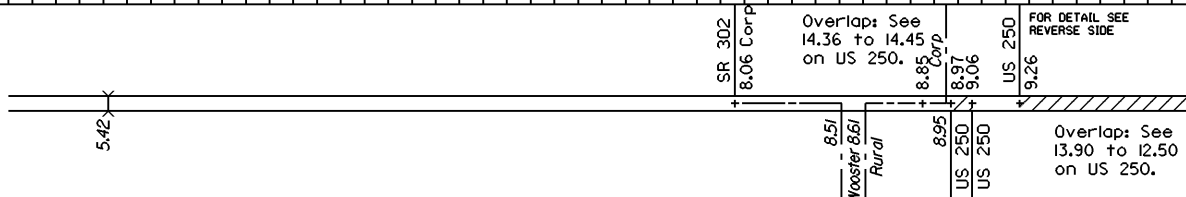
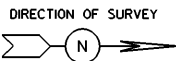


STATE OF OHIO - DEPARTMENT OF TRANSPORTATION
STATE ROUTE SECTIONS ON CONTINUOUS MILEAGE STATIONING

DISTRICT 3
COUNTY WAYNE
ROUTE SR 83



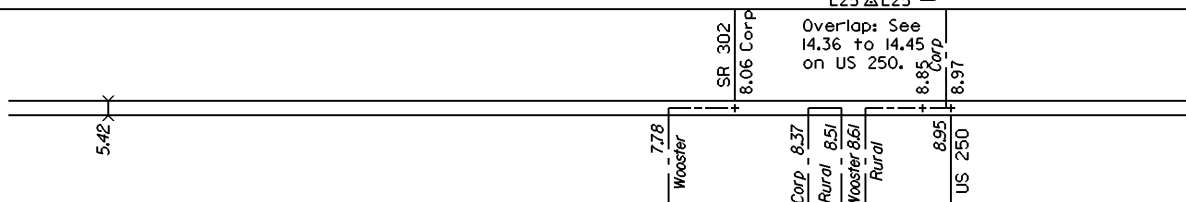
VISIBLE
FIXED
POINTS



STREET NAME				
SECTION IDENTIFICATION	4.09	8.06	8.85	9.06
SECTION LENGTH	3.97	0.79	0.12	0.20
SURFACE TYPE & WIDTH	G22'	G35'		G16' Δ G16'
BASE TYPE & WIDTH	I20', L2'	T21', L14'		L16' Δ L16'
YEAR	1993			1978
PROJECT NUMBER	202			369

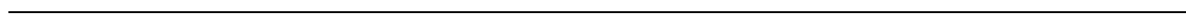
PERPETUATION

VISIBLE
FIXED
POINTS

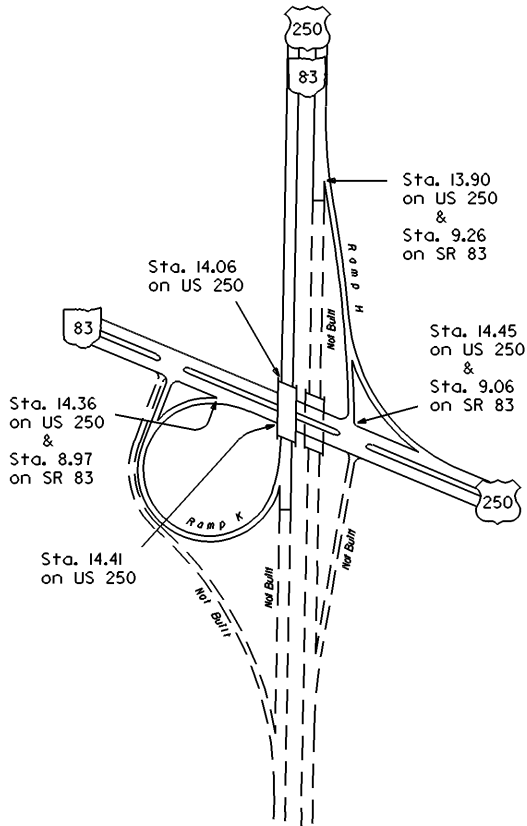


STREET NAME				
SECTION IDENTIFICATION	4.09	8.06	8.85	
SECTION LENGTH	3.97	0.79	0.12	
SURFACE TYPE & WIDTH	G22'	G35'		
BASE TYPE & WIDTH	I20', L2'	T21', L14'		
YEAR	2004			
PROJECT NUMBER	464			

VISIBLE
FIXED
POINTS



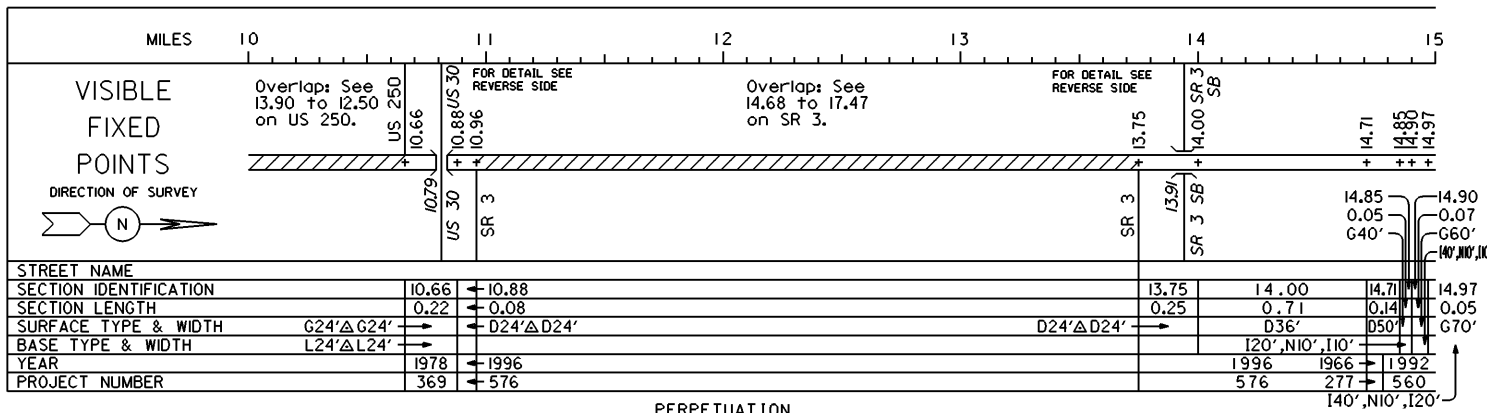
STREET NAME	
SECTION IDENTIFICATION	
SECTION LENGTH	
SURFACE TYPE & WIDTH	
BASE TYPE & WIDTH	
YEAR	
PROJECT NUMBER	



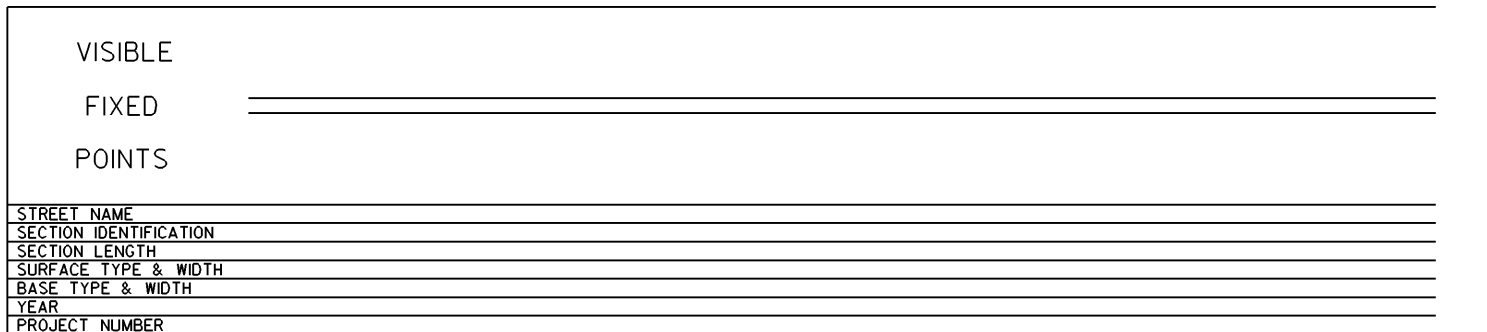
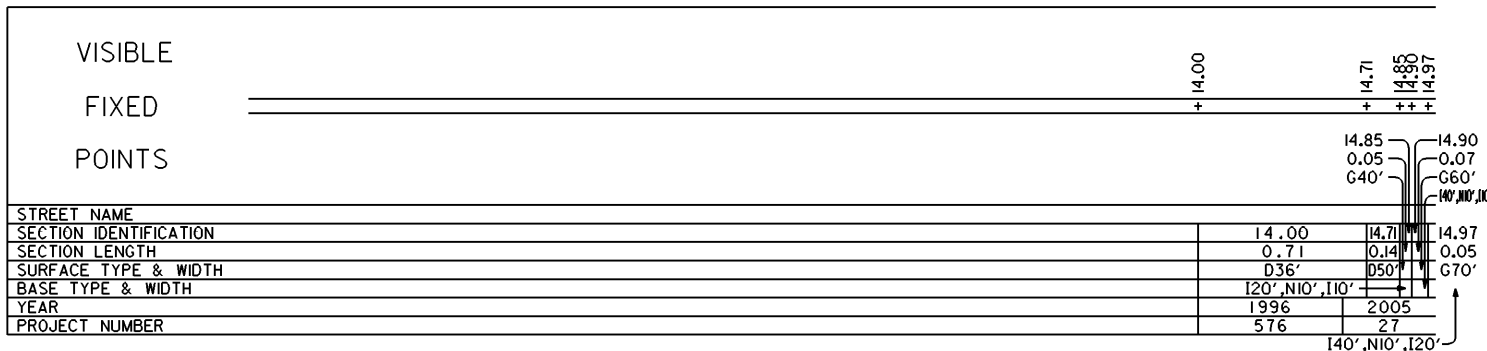
INTERCHANGE
 US 250 & SR 83
 WAYNE COUNTY
 INTERCHANGE ID NUMBER = 097100

STATE OF OHIO - DEPARTMENT OF TRANSPORTATION
STATE ROUTE SECTIONS ON CONTINUOUS MILEAGE STATIONING

DISTRICT 3
COUNTY WAYNE
ROUTE SR 83



PERPETUATION

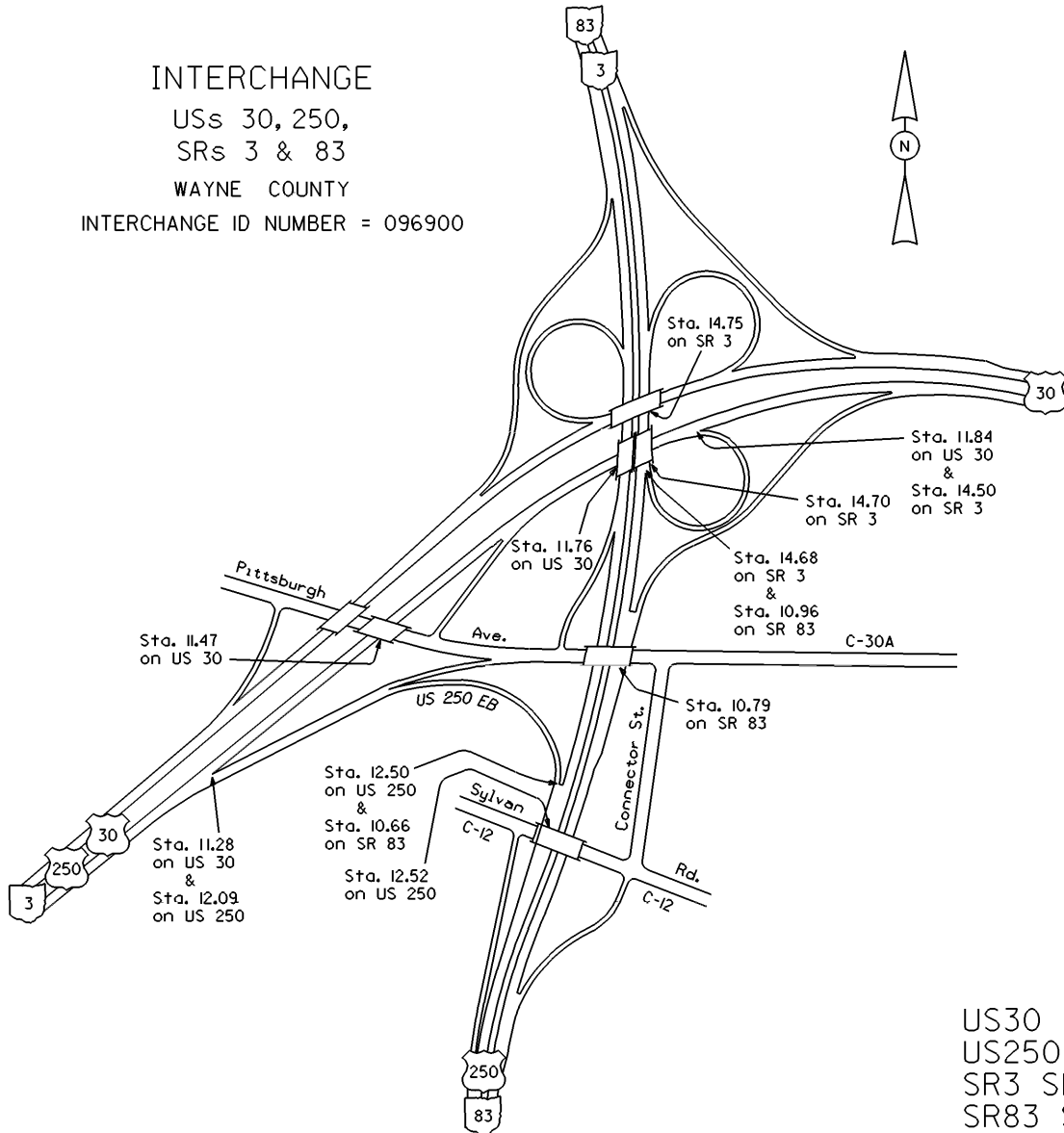


INTERCHANGE

USs 30, 250,
SRs 3 & 83

WAYNE COUNTY

INTERCHANGE ID NUMBER = 096900



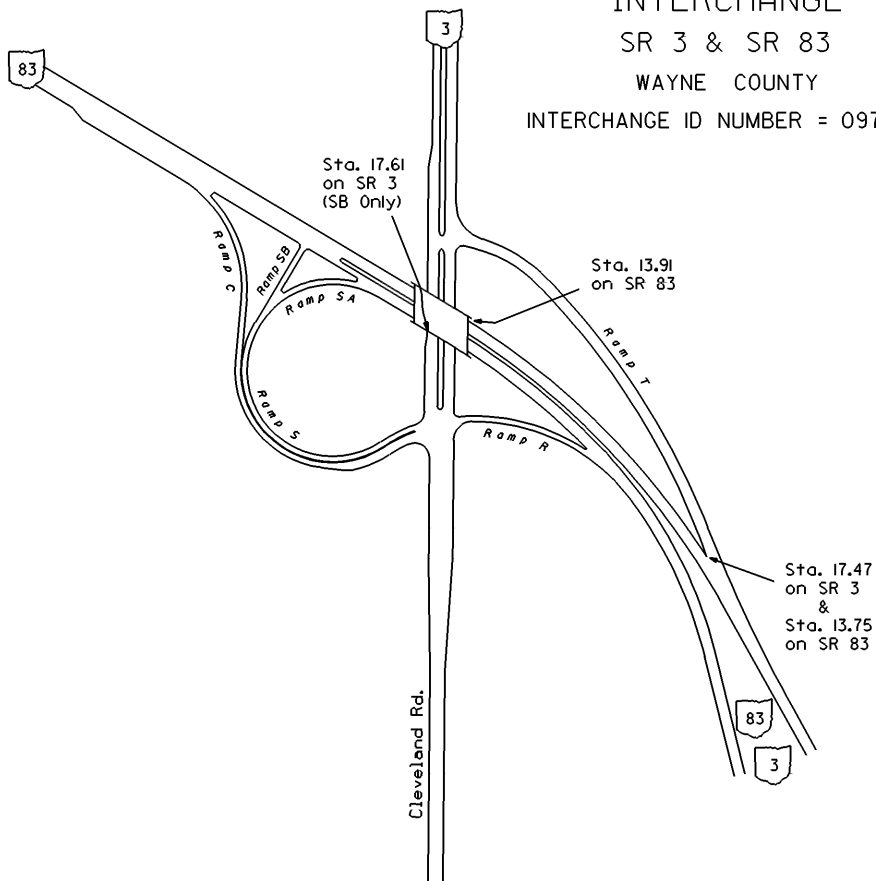
US30 SHEET 3 OF 6
US250 SHEET 3 OF 7
SR3 SHEET 3 OF 6
SR83 SHEET 3 OF 6

INTERCHANGE

SR 3 & SR 83

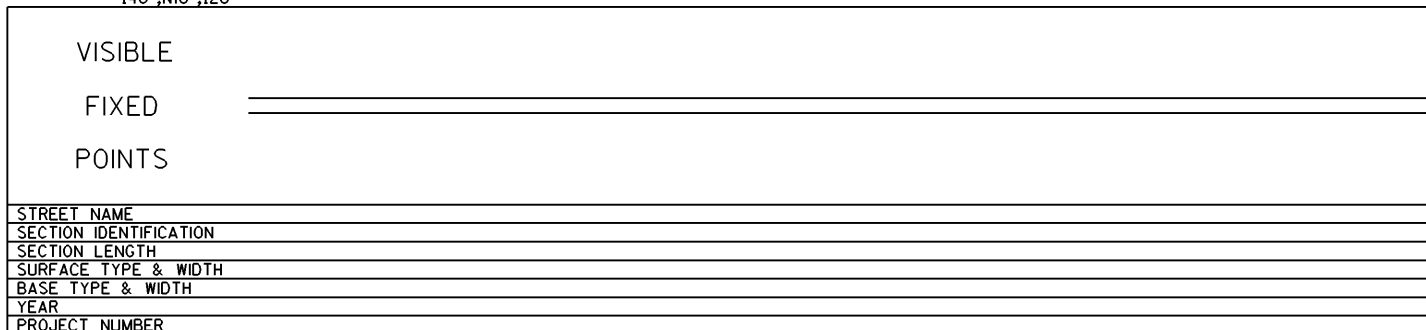
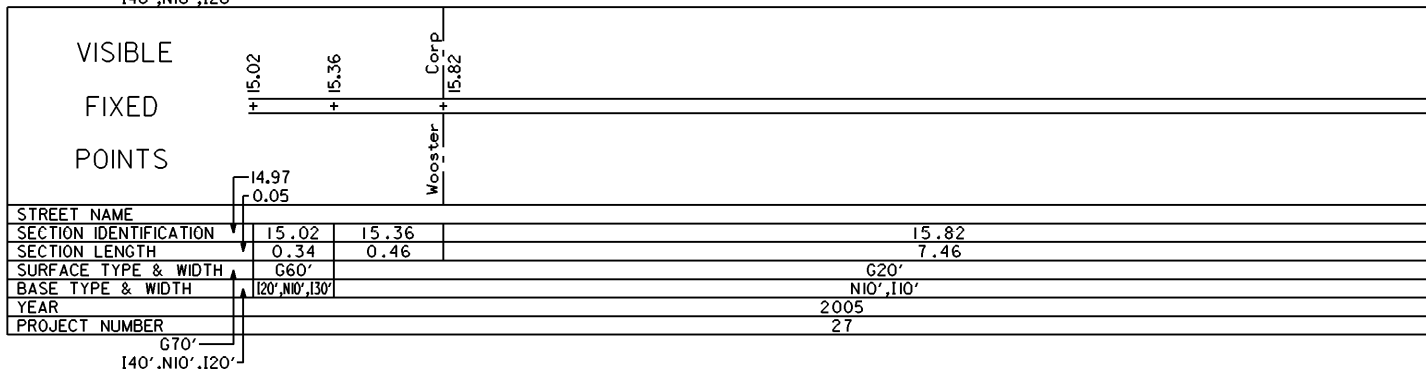
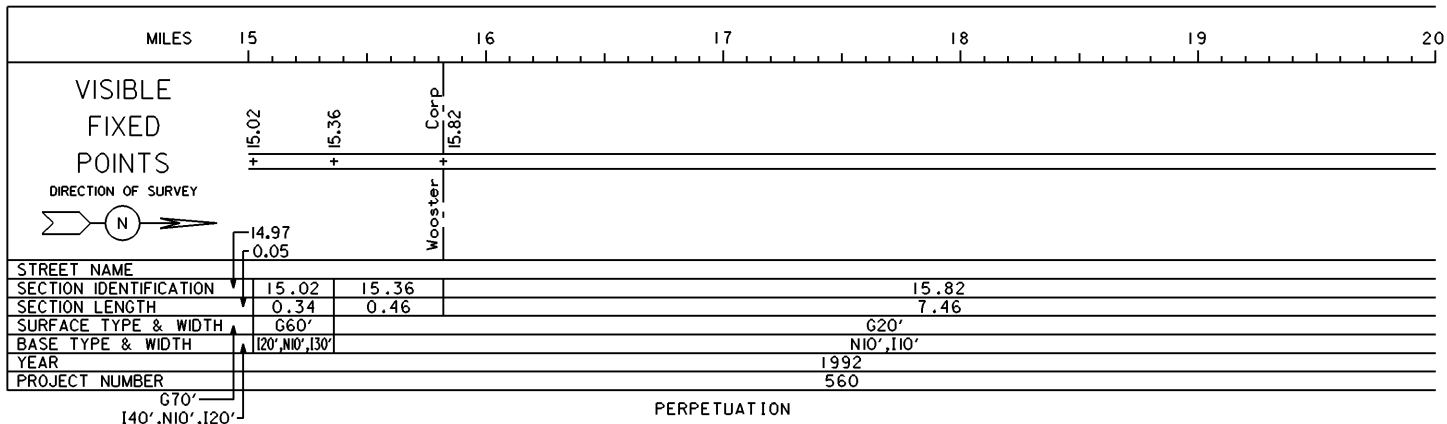
WAYNE COUNTY

INTERCHANGE ID NUMBER = 097300



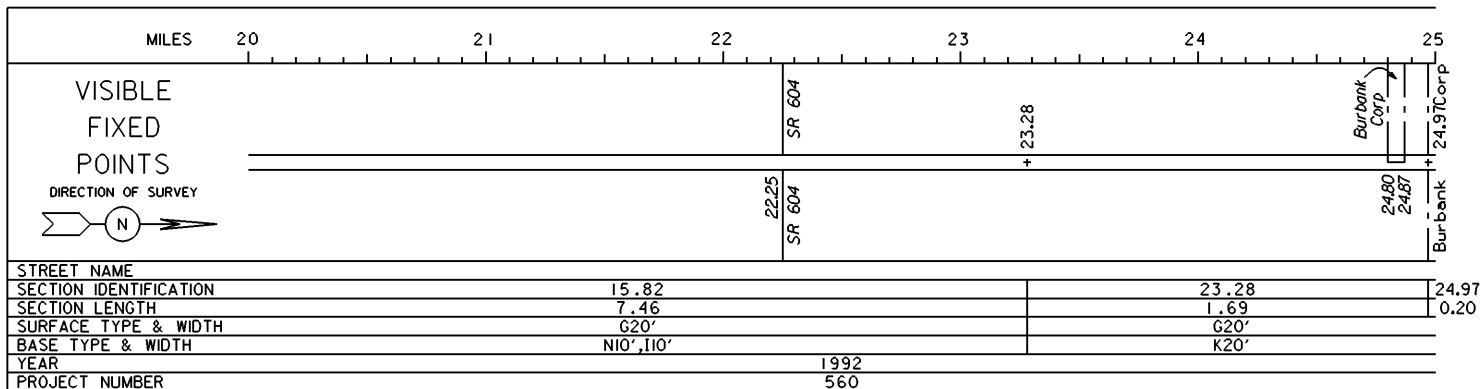
STATE OF OHIO - DEPARTMENT OF TRANSPORTATION
STATE ROUTE SECTIONS ON CONTINUOUS MILEAGE STATIONING

DISTRICT 3
COUNTY WAYNE
ROUTE SR 83

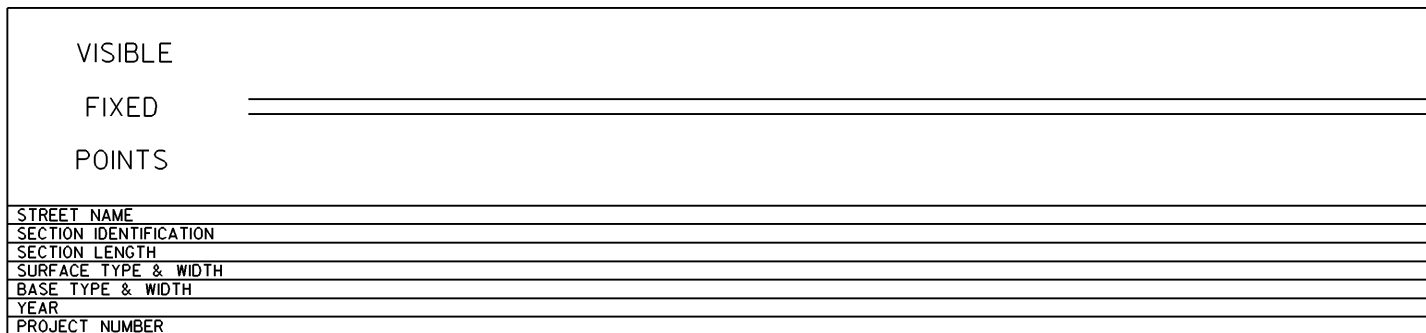
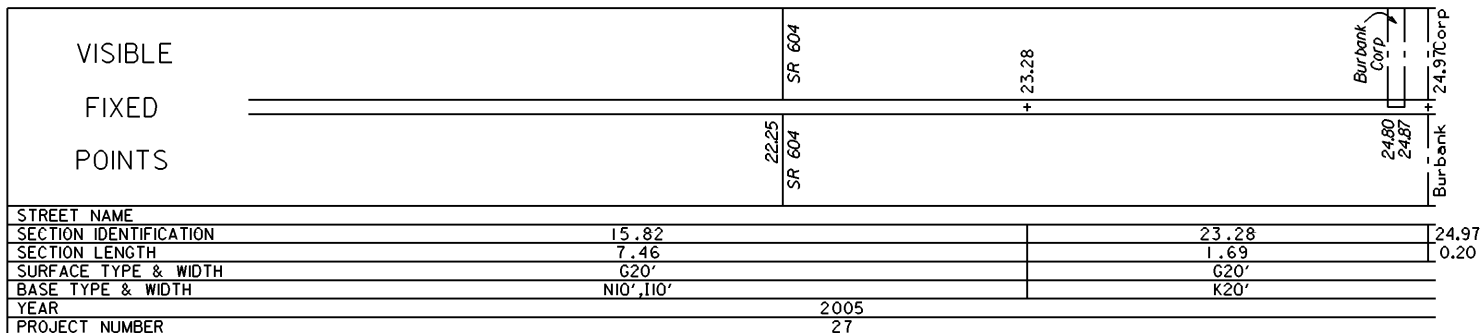


STATE OF OHIO - DEPARTMENT OF TRANSPORTATION
STATE ROUTE SECTIONS ON CONTINUOUS MILEAGE STATIONING

DISTRICT 3
COUNTY WAYNE
ROUTE SR 83



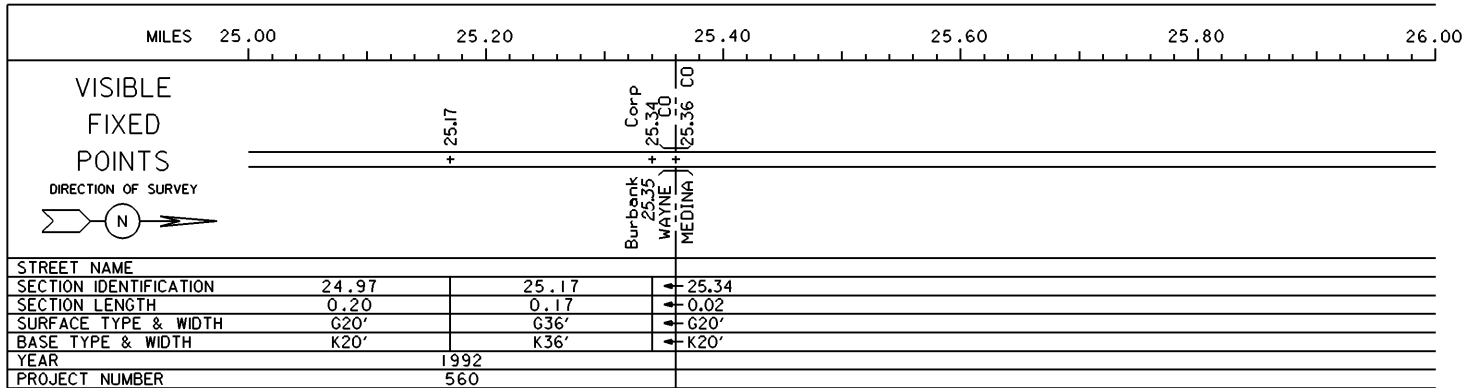
PERPETUATION



STATE OF OHIO - DEPARTMENT OF TRANSPORTATION

STATE ROUTE SECTIONS ON CONTINUOUS MILEAGE STATIONING

DISTRICT 3
 COUNTY WAYNE
 ROUTE SR 83



PERPETUATION

