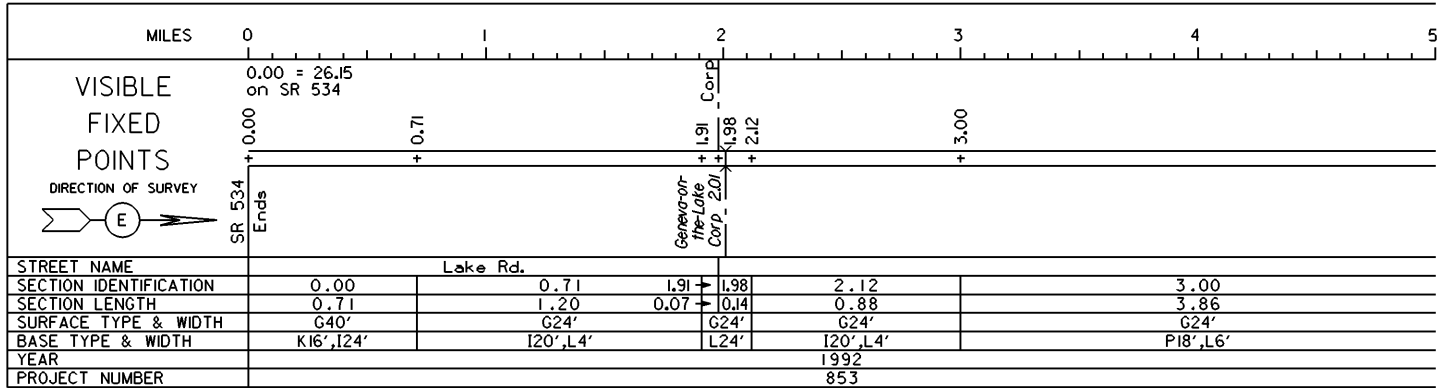


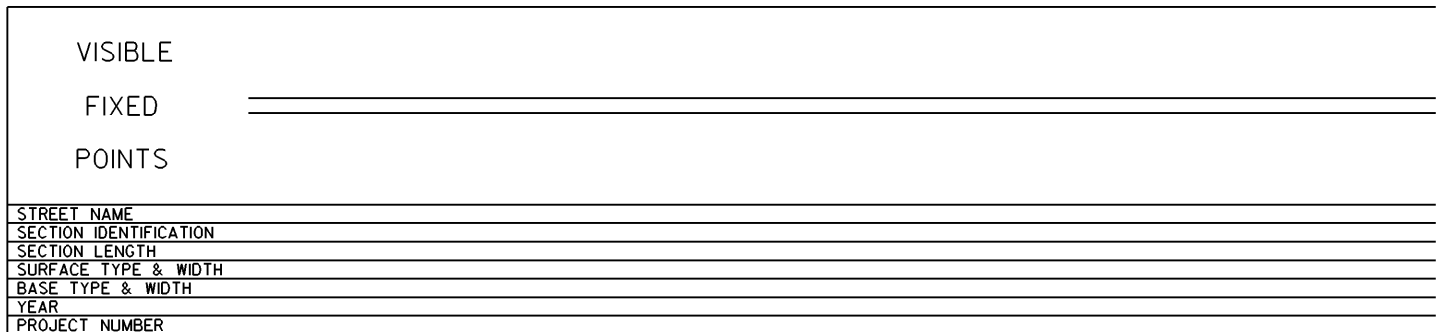
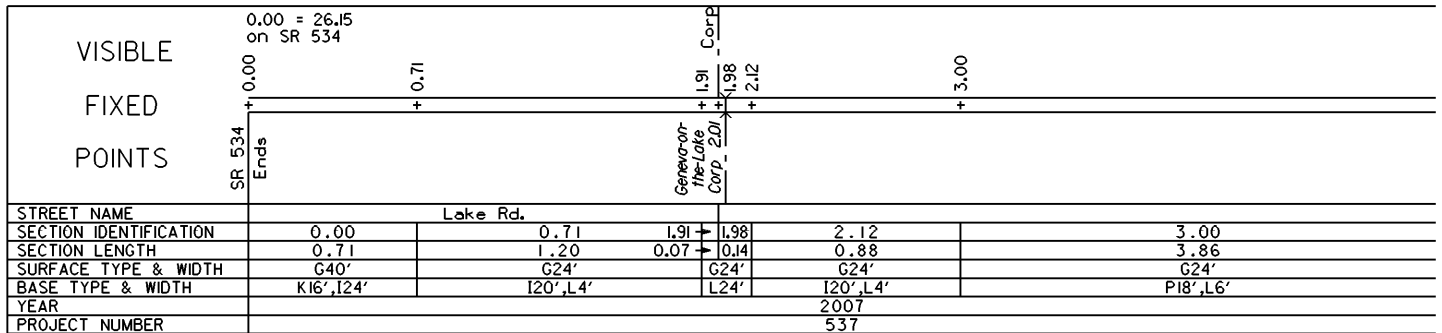
STATE OF OHIO - DEPARTMENT OF TRANSPORTATION

STATE ROUTE SECTIONS ON CONTINUOUS MILEAGE STATIONING

DISTRICT 4
 COUNTY ASHTABULA
 ROUTE SR 531



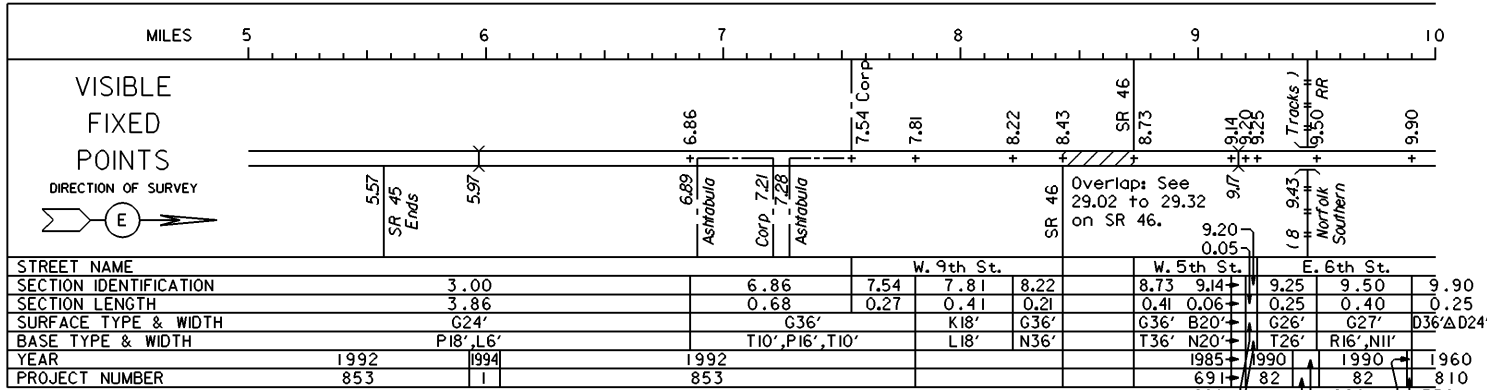
PERPETUATION



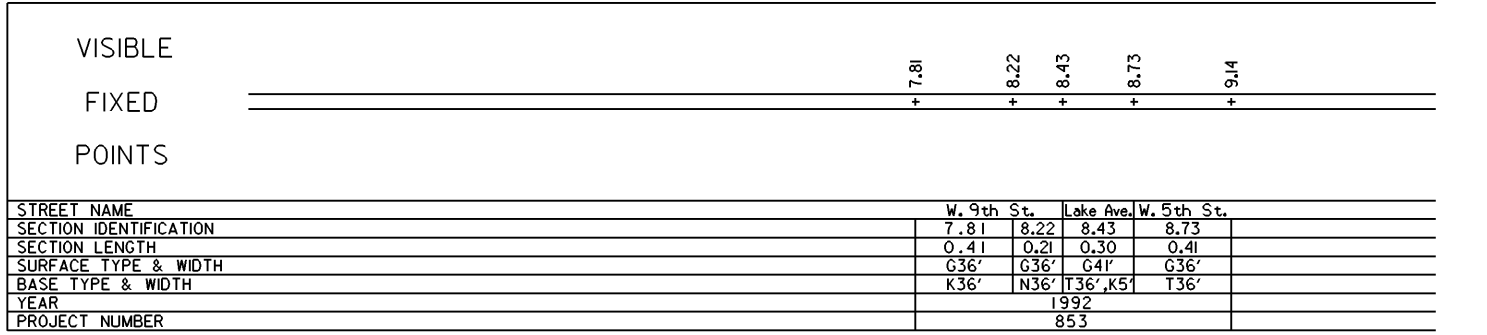
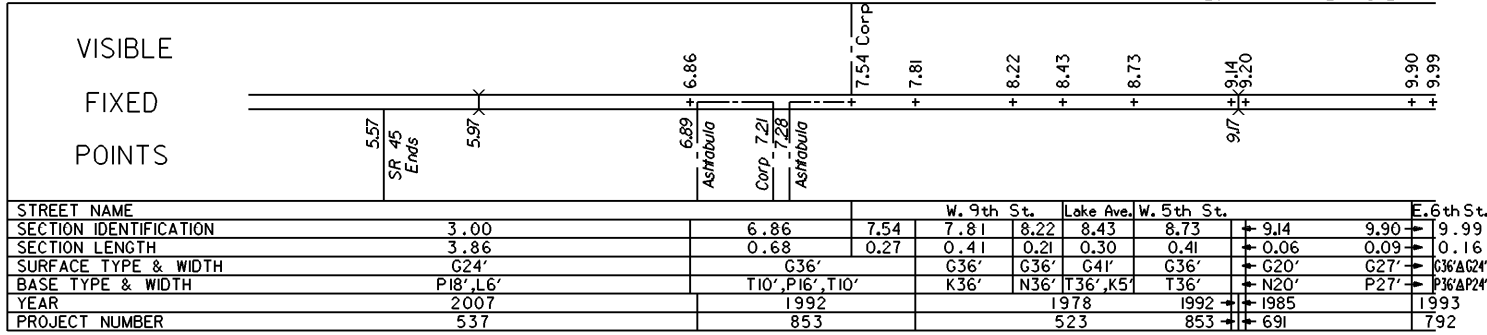
STATE OF OHIO - DEPARTMENT OF TRANSPORTATION

STATE ROUTE SECTIONS ON CONTINUOUS MILEAGE STATIONING

DISTRICT 4
 COUNTY ASHTABULA
 ROUTE SR 531



PERPETUATION



STATE OF OHIO - DEPARTMENT OF TRANSPORTATION
STATE ROUTE SECTIONS ON CONTINUOUS MILEAGE STATIONING

DISTRICT 4
COUNTY ASHTABULA
ROUTE SR 531

MILES	10	11	12	13	14	15		
VISIBLE FIXED POINTS	10.15 Corp	10.27	10.64	10.96 Spur RR	11.48 RR	13.73	14.20 (13.95 Corp)	14.75 Ends
	10.02 SR 1146 Ends Ashtabula			1100 Penn Cen	1144 Private		N. Kingsville	
DIRECTION OF SURVEY								
STREET NAME	E. 6th St.	Lake Rd.					Lake Rd.	Lake Rd.
SECTION IDENTIFICATION	9.90 10.15	10.27	10.64	10.96	11.48	13.73	13.95	14.20
SECTION LENGTH	0.25 0.12	0.37	0.32	0.52	2.25	0.22	0.25	4.50
SURFACE TYPE & WIDTH	G26'	G26'	G26'	G24'	G24'	G24'	G24'	G20'
BASE TYPE & WIDTH	P26'	T16',L10'	P22',L4'	L24'	L20',L4'	K24'	K24'	I20'
YEAR	D36'ΔD24'	1960			1965		2003	2003
PROJECT NUMBER	810				231		160	160


PERPETUATION

VISIBLE FIXED POINTS	10.15 Corp	10.27	10.64	10.96 Spur RR	11.48 RR	13.73	14.20 (13.95 Corp)
	10.02 SR 1146 Ends Ashtabula			1100 CSX	1144 Abandoned		N. Kingsville
STREET NAME	E. 6th St.	Lake Rd.					Lake Rd.
SECTION IDENTIFICATION	9.99 10.15	10.27	10.64	10.96	11.48	13.73	
SECTION LENGTH	0.16 0.12	0.37	0.32	0.52	2.25	0.22	
SURFACE TYPE & WIDTH	G26'	G26'	G26'	G24'	G24'	G24'	
BASE TYPE & WIDTH	P26'	T16',L10'	P22',L4'	L24'	L20',L4'	K24'	
YEAR	G36'ΔG24'	1993			1987		
PROJECT NUMBER	792				594		

VISIBLE FIXED POINTS	10.27 Corp	10.64	10.96 Spur RR	11.48 RR	13.73	14.20 (13.95 Corp)
	Ashtabula		1100 CSX	1144		N. Kingsville
STREET NAME						
SECTION IDENTIFICATION		10.27	10.64	10.96	11.48	13.73
SECTION LENGTH		0.37	0.32	0.52	2.25	0.22
SURFACE TYPE & WIDTH		G26'	G26'	G24'	G24'	G24'
BASE TYPE & WIDTH		T16',L10'	P22',L4'	L24'	L20',L4'	K24'
YEAR					2003	
PROJECT NUMBER					160	

STATE OF OHIO - DEPARTMENT OF TRANSPORTATION
STATE ROUTE SECTIONS ON CONTINUOUS MILEAGE STATIONING

DISTRICT 4
COUNTY ASHTABULA
ROUTE SR 531

MILES	15	16	17	18	19	20
VISIBLE FIXED POINTS						18.70
DIRECTION OF SURVEY						
						
STREET NAME	Lake Road					
SECTION IDENTIFICATION	14.20				18.70	
SECTION LENGTH	4.50				2.51	
SURFACE TYPE & WIDTH	G20'				G24'	
BASE TYPE & WIDTH	I20'				P16', I8'	
YEAR	2003					
PROJECT NUMBER	160					

M.Kingsville Corp
+
Conneaut 18.70 Corp

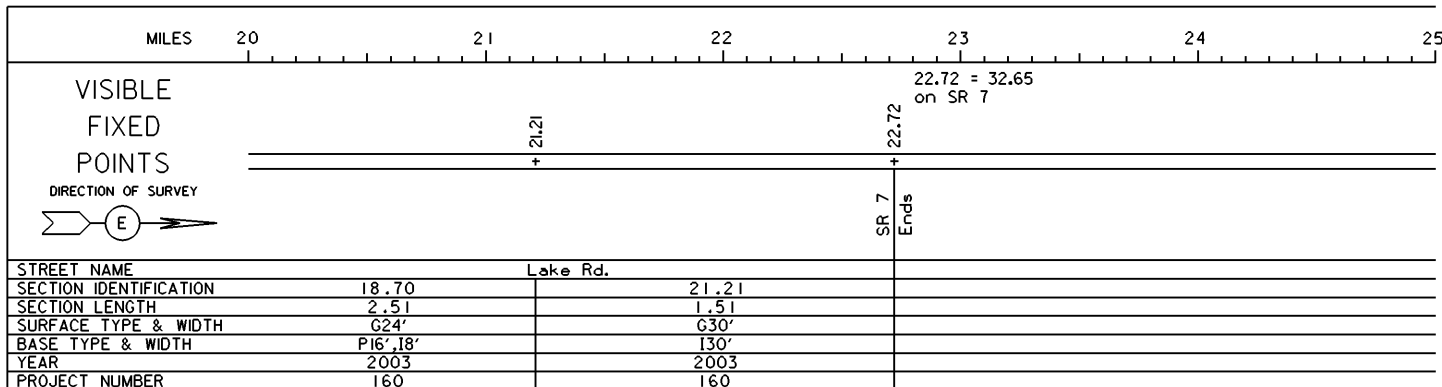
PERPETUATION

VISIBLE FIXED POINTS						
STREET NAME						
SECTION IDENTIFICATION						
SECTION LENGTH						
SURFACE TYPE & WIDTH						
BASE TYPE & WIDTH						
YEAR						
PROJECT NUMBER						

VISIBLE FIXED POINTS						
STREET NAME						
SECTION IDENTIFICATION						
SECTION LENGTH						
SURFACE TYPE & WIDTH						
BASE TYPE & WIDTH						
YEAR						
PROJECT NUMBER						

STATE OF OHIO - DEPARTMENT OF TRANSPORTATION
STATE ROUTE SECTIONS ON CONTINUOUS MILEAGE STATIONING

DISTRICT 4
COUNTY ASHTABULA
ROUTE SR 531



PERPETUATION

VISIBLE
FIXED
POINTS

STREET NAME
SECTION IDENTIFICATION
SECTION LENGTH
SURFACE TYPE & WIDTH
BASE TYPE & WIDTH
YEAR
PROJECT NUMBER

VISIBLE
FIXED
POINTS

STREET NAME
SECTION IDENTIFICATION
SECTION LENGTH
SURFACE TYPE & WIDTH
BASE TYPE & WIDTH
YEAR
PROJECT NUMBER