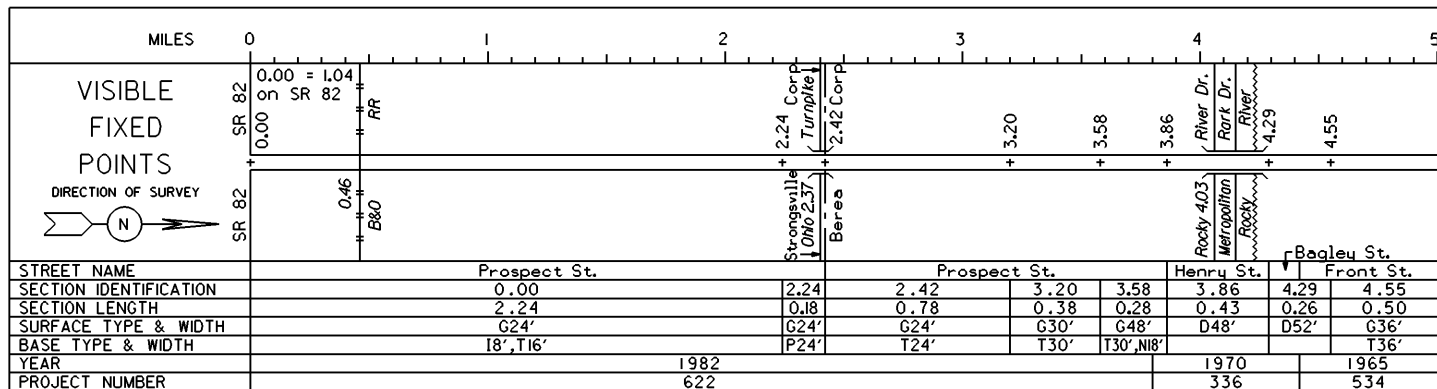
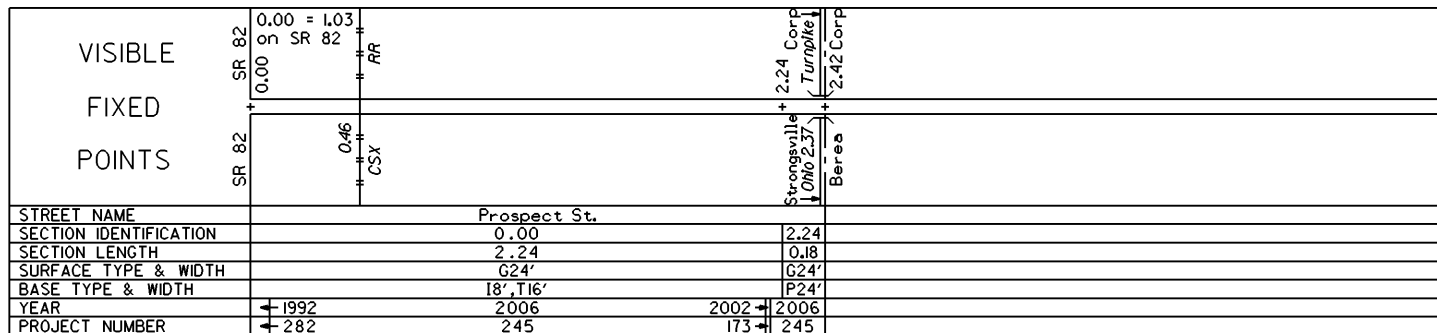
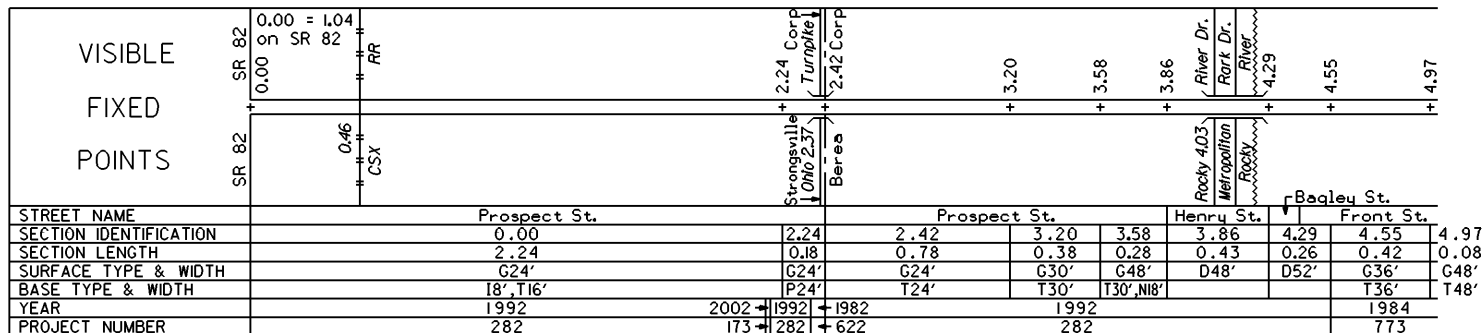


STATE OF OHIO - DEPARTMENT OF TRANSPORTATION
STATE ROUTE SECTIONS ON CONTINUOUS MILEAGE STATIONING

DISTRICT 12
COUNTY CUYAHOGA
ROUTE SR 237

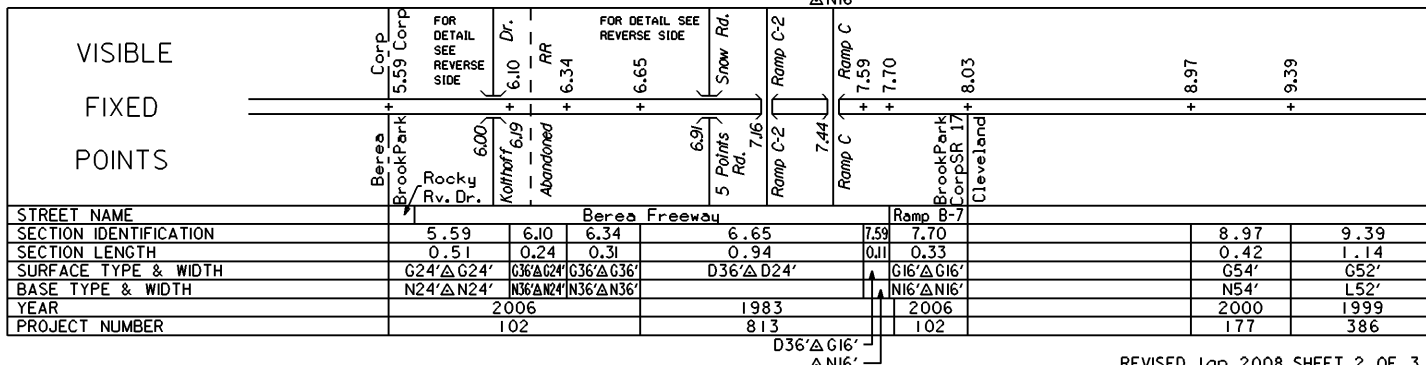
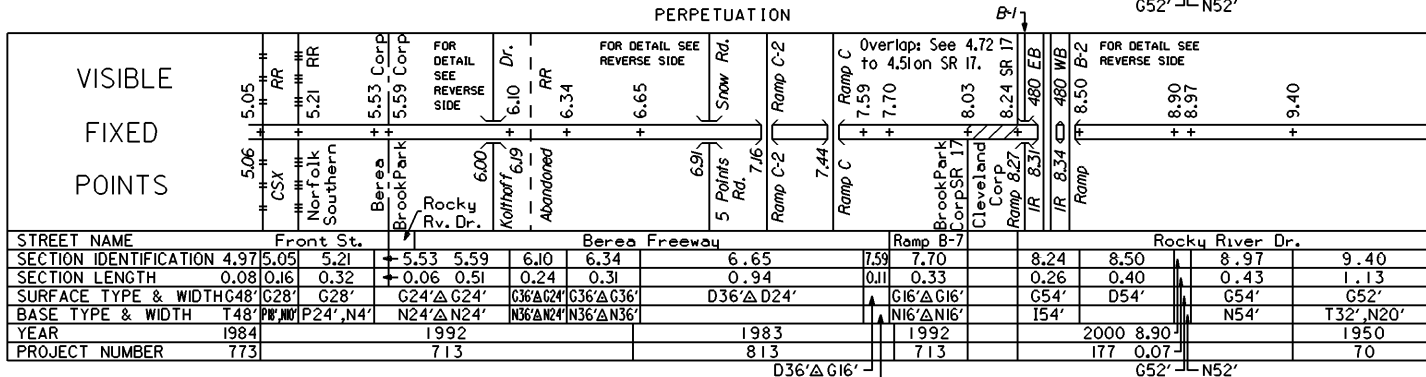
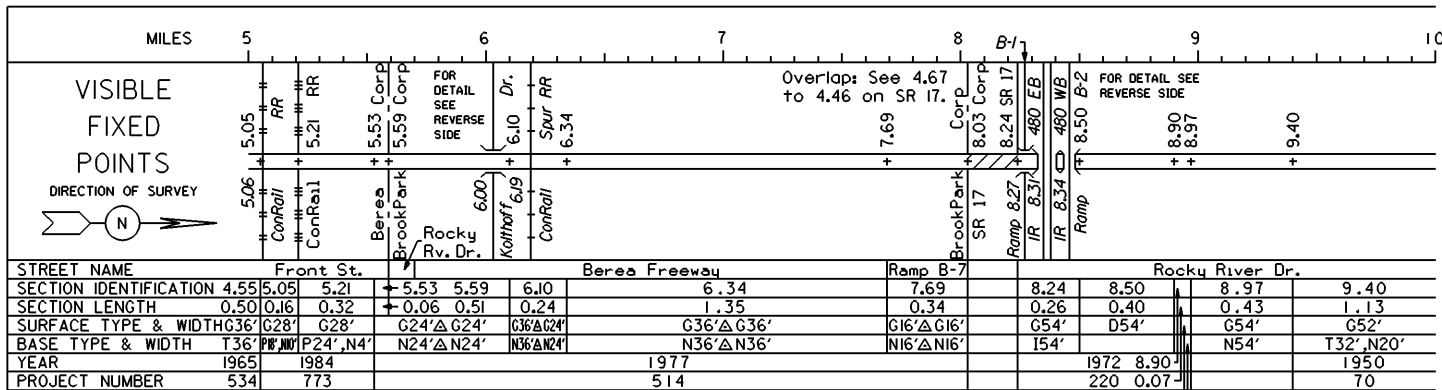


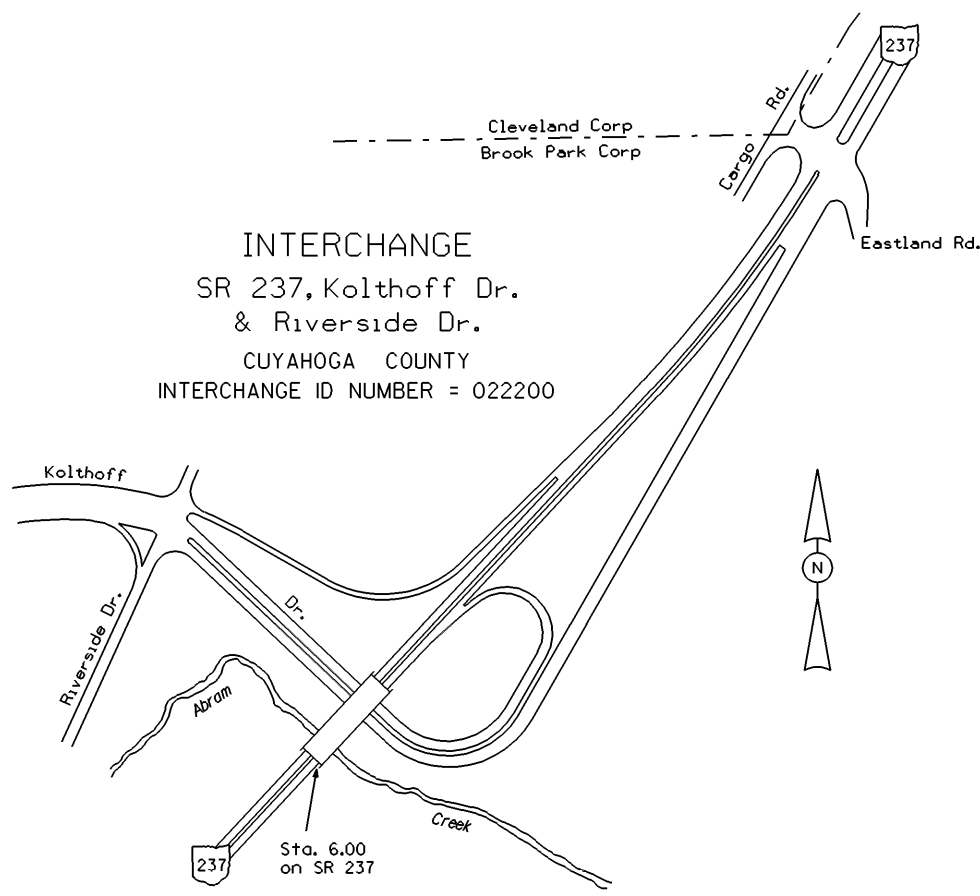
PERPETUATION



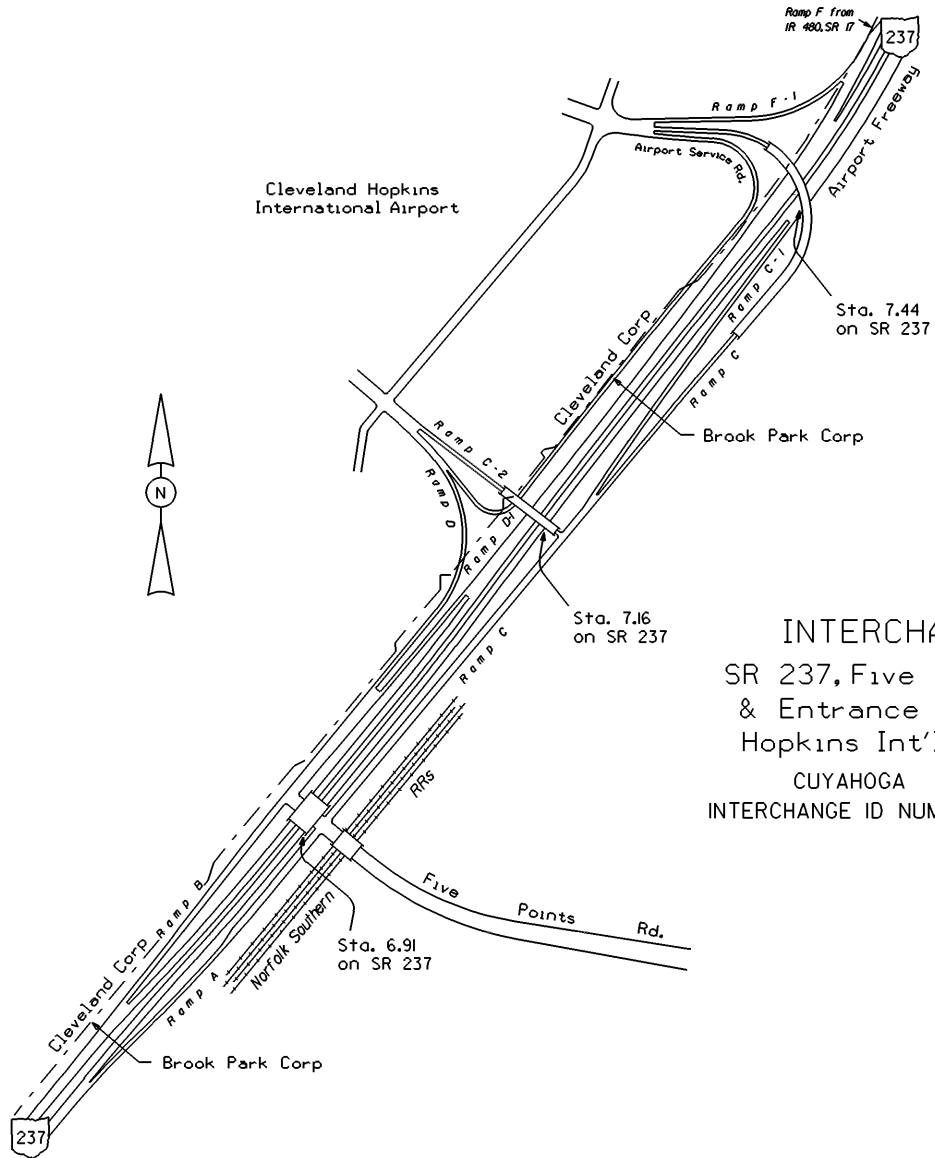
STATE OF OHIO - DEPARTMENT OF TRANSPORTATION
STATE ROUTE SECTIONS ON CONTINUOUS MILEAGE STATIONING

DISTRICT 12
COUNTY CUYAHOGA
ROUTE SR 237



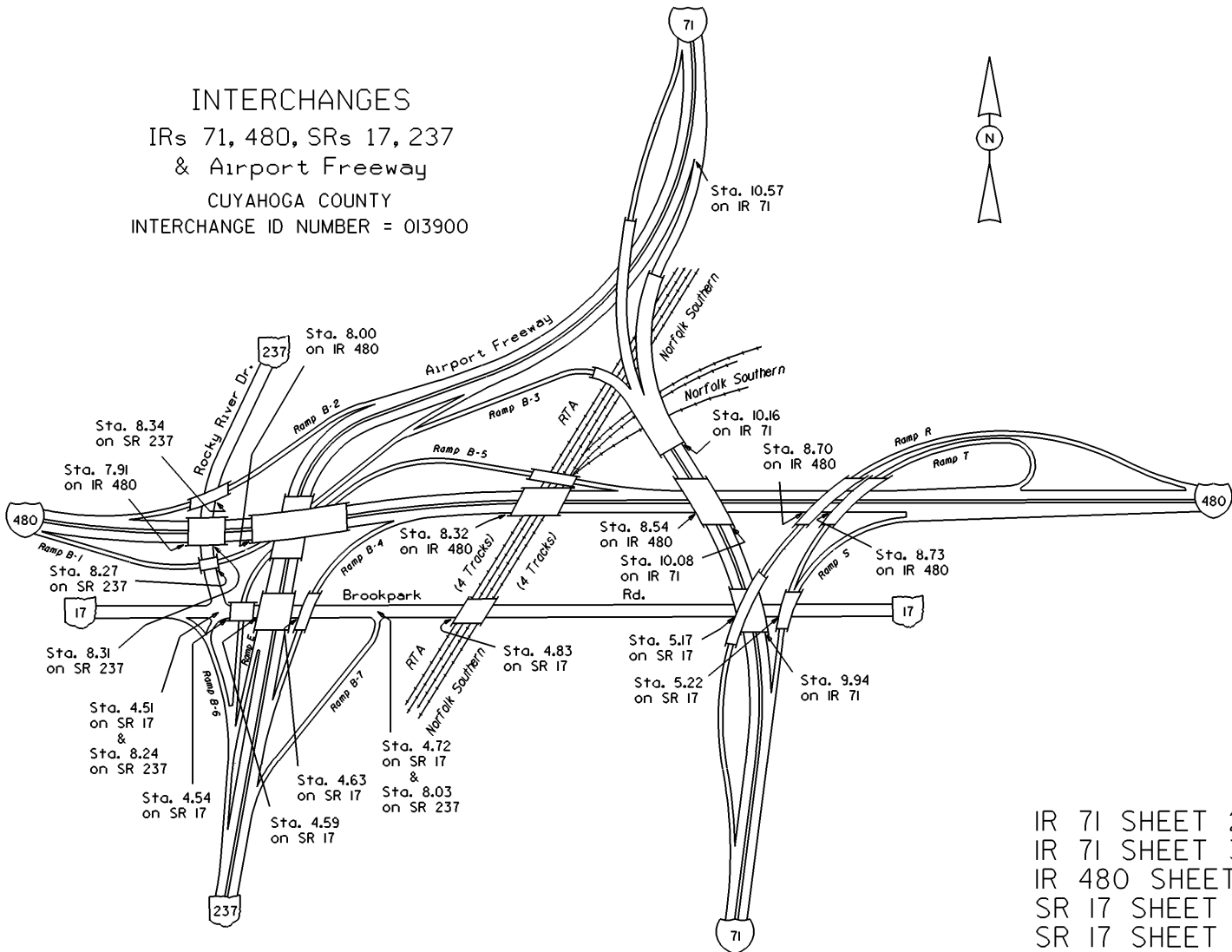


INTERCHANGE
SR 237, Kolthoff Dr.
& Riverside Dr.
CUYAHOGA COUNTY
INTERCHANGE ID NUMBER = 022200



INTERCHANGES
 SR 237, Five Points Rd.
 & Entrance Ramps to
 Hopkins Int'l Airport
 CUYAHOGA COUNTY
 INTERCHANGE ID NUMBER = 022300

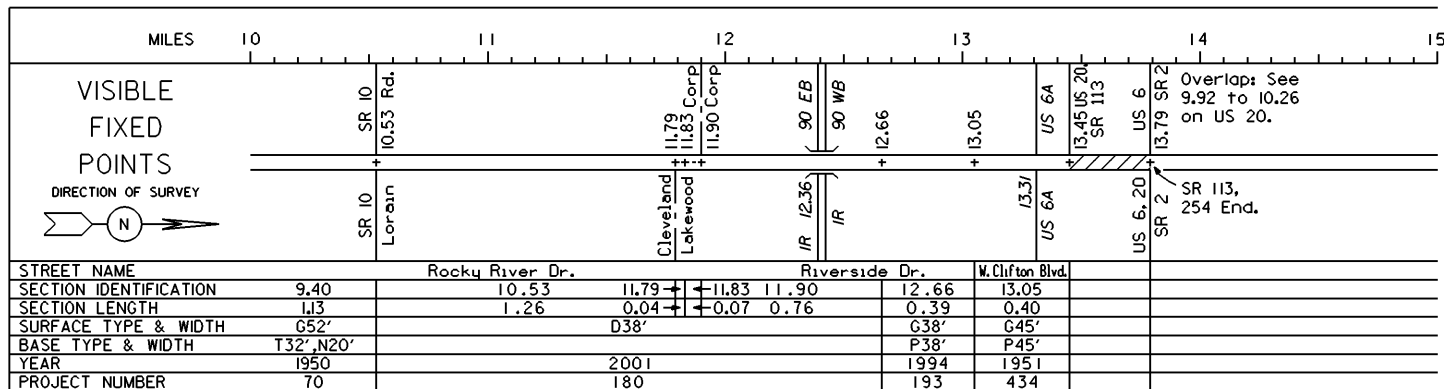
INTERCHANGES
 IRs 71, 480, SRs 17, 237
 & Airport Freeway
 CUYAHOGA COUNTY
 INTERCHANGE ID NUMBER = 013900



IR 71 SHEET 2 OF 8
 IR 71 SHEET 3 OF 8
 IR 480 SHEET 2 OF 6
 SR 17 SHEET 1 OF 7
 SR 17 SHEET 2 OF 7
 SR 237 SHEET 2 OF 3

STATE OF OHIO - DEPARTMENT OF TRANSPORTATION
STATE ROUTE SECTIONS ON CONTINUOUS MILEAGE STATIONING

DISTRICT 12
COUNTY CUYAHOGA
ROUTE SR 237



PERPETUATION

