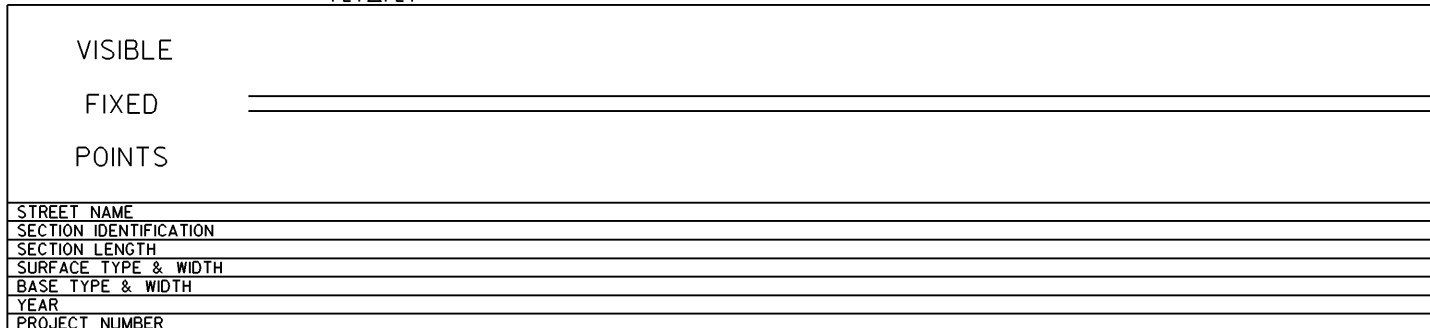
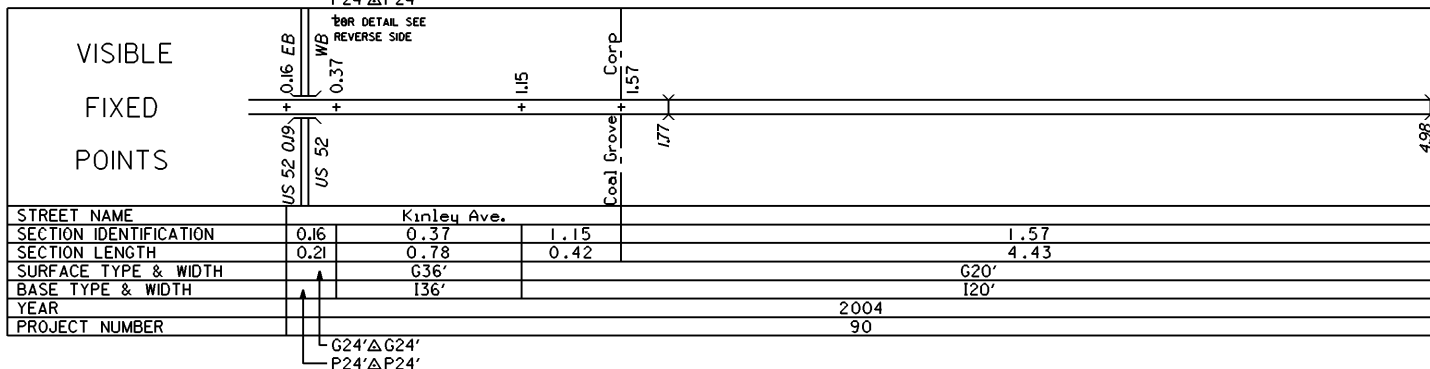
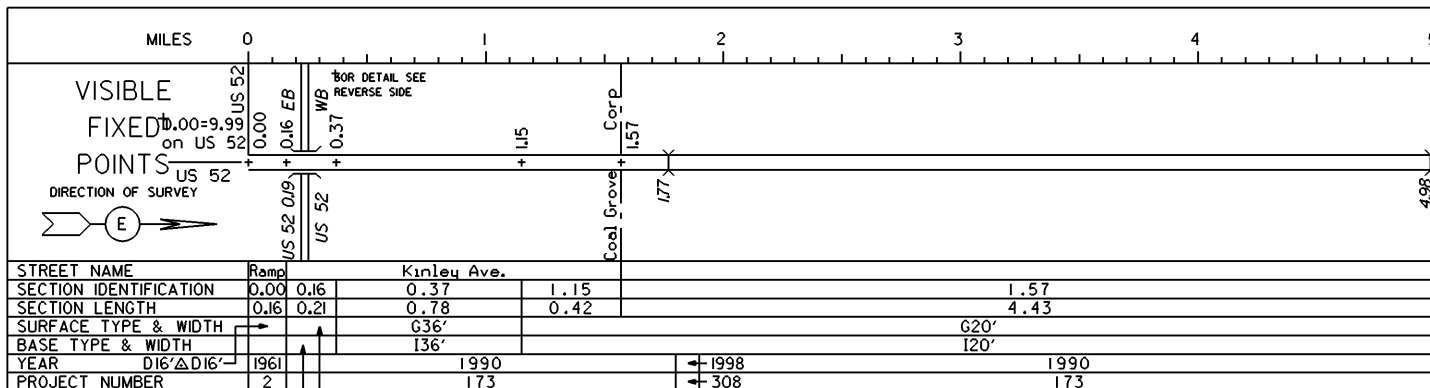
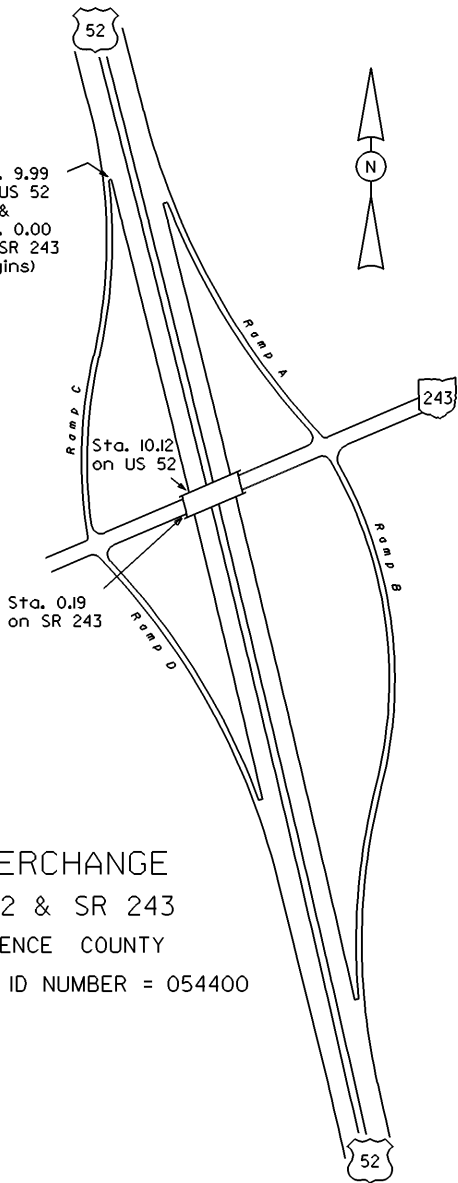


STATE OF OHIO - DEPARTMENT OF TRANSPORTATION  
STATE ROUTE SECTIONS ON CONTINUOUS MILEAGE STATIONING

DISTRICT 9  
COUNTY LAWRENCE  
ROUTE SR 243



Sta. 9.99  
on US 52  
&  
Sta. 0.00  
on SR 243  
(Begins)



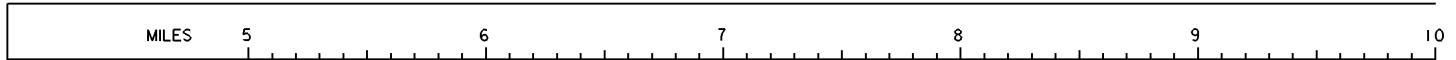
INTERCHANGE  
US 52 & SR 243  
LAWRENCE COUNTY

INTERCHANGE ID NUMBER = 054400

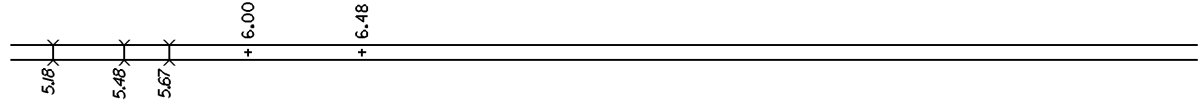
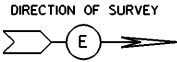
STATE OF OHIO - DEPARTMENT OF TRANSPORTATION

STATE ROUTE SECTIONS ON CONTINUOUS MILEAGE STATIONING

DISTRICT 9  
 COUNTY LAWRENCE  
 ROUTE SR 243



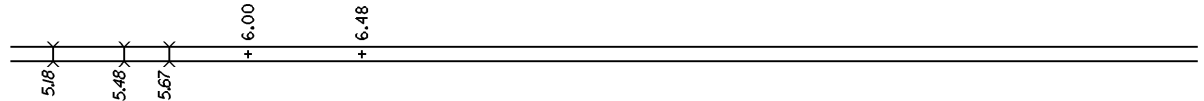
VISIBLE  
 FIXED  
 POINTS



STREET NAME			
SECTION IDENTIFICATION	1.57	6.00	6.48
SECTION LENGTH	4.43	0.48	4.91
SURFACE TYPE & WIDTH	G20'	G24'	G19'
BASE TYPE & WIDTH	I20'	I24'	I19'
YEAR	1990		
PROJECT NUMBER	173		

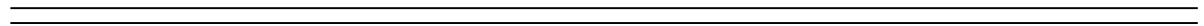
PERPETUATION

VISIBLE  
 FIXED  
 POINTS



STREET NAME			
SECTION IDENTIFICATION	1.57	6.00	6.48
SECTION LENGTH	4.43	0.48	4.91
SURFACE TYPE & WIDTH	G20'	G24'	G19'
BASE TYPE & WIDTH	I20'	I24'	I19'
YEAR	2004		2007
PROJECT NUMBER	90		395

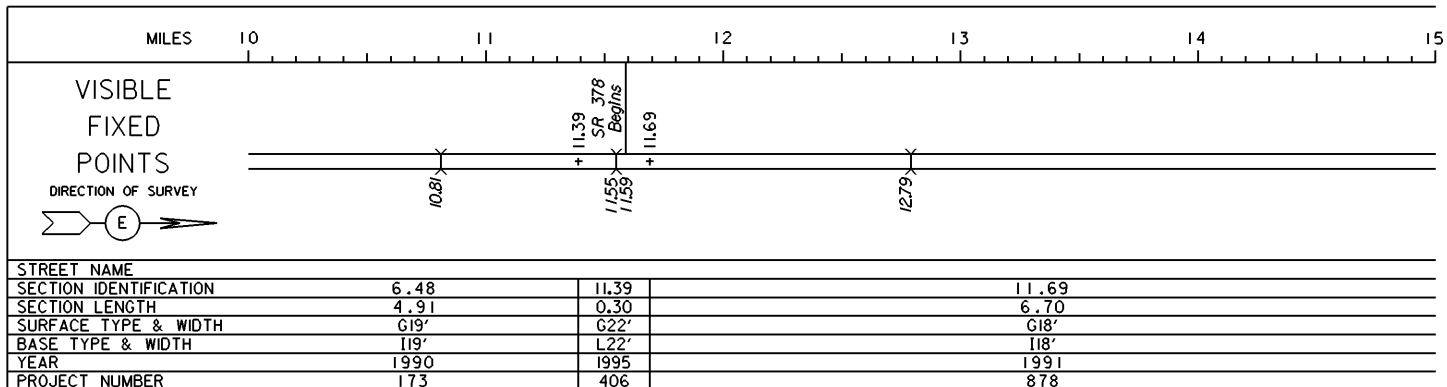
VISIBLE  
 FIXED  
 POINTS



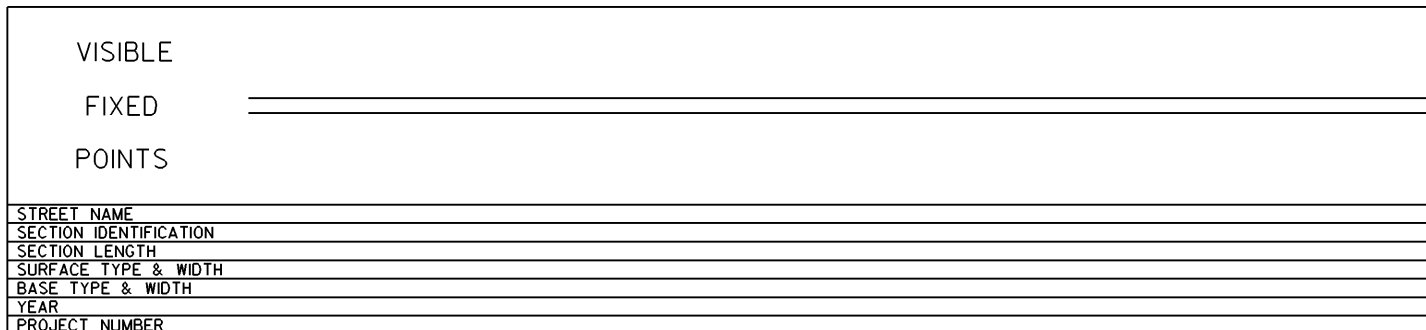
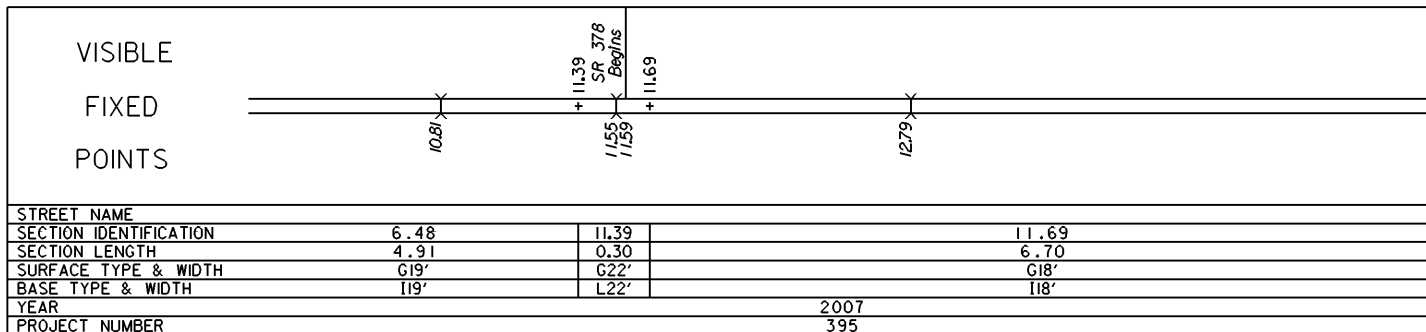
STREET NAME			
SECTION IDENTIFICATION			
SECTION LENGTH			
SURFACE TYPE & WIDTH			
BASE TYPE & WIDTH			
YEAR			
PROJECT NUMBER			

STATE OF OHIO - DEPARTMENT OF TRANSPORTATION  
STATE ROUTE SECTIONS ON CONTINUOUS MILEAGE STATIONING

DISTRICT 9  
COUNTY LAWRENCE  
ROUTE SR 243




PERPETUATION



STATE OF OHIO - DEPARTMENT OF TRANSPORTATION  
STATE ROUTE SECTIONS ON CONTINUOUS MILEAGE STATIONING

DISTRICT 9  
COUNTY LAWRENCE  
ROUTE SR 243

MILES	15	16	17	18	19	20	
VISIBLE FIXED POINTS  DIRECTION OF SURVEY 					SR 7	18.39 = 5.08 on SR 7	
						+	
						SR 7	
STREET NAME							
SECTION IDENTIFICATION		11.69					
SECTION LENGTH		6.70					
SURFACE TYPE & WIDTH		G18'					
BASE TYPE & WIDTH		118'					
YEAR		1991					
PROJECT NUMBER		878					

PERPETUATION

VISIBLE FIXED POINTS  					SR 7	18.39 = 5.08 on SR 7	
						+	
						SR 7	
STREET NAME							
SECTION IDENTIFICATION		11.69					
SECTION LENGTH		6.70					
SURFACE TYPE & WIDTH		G18'					
BASE TYPE & WIDTH		118'					
YEAR		2007					
PROJECT NUMBER		395					

VISIBLE FIXED POINTS  						
STREET NAME						
SECTION IDENTIFICATION						
SECTION LENGTH						
SURFACE TYPE & WIDTH						
BASE TYPE & WIDTH						
YEAR						
PROJECT NUMBER						