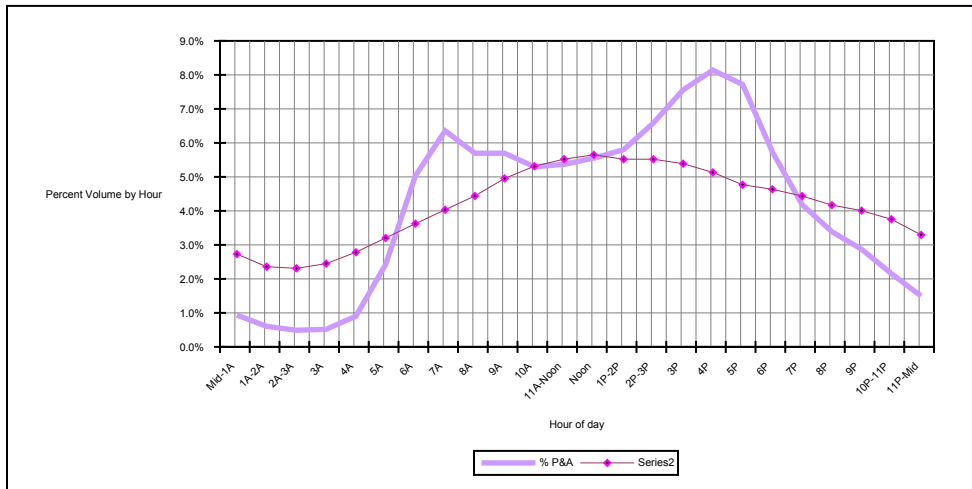


# Hourly Percent by Vehicle Type Rural Interstate

Sample=22 Counts

Sample of Permanent ATR's and Portable Counts Taken in 2003

Hour	Hour of Day	FC	P& A (Cars)	% P&A (Cars)	B&C (Trucks)	% B&C (Trucks)	Total	% Total
0	Mid-1A	1	18858	0.9%	25260	2.7%	44118	1.5%
1	1A-2A	1	12163	0.6%	21829	2.4%	33992	1.2%
2	2A-3A	1	9858	0.5%	21380	2.3%	31238	1.1%
3	3A	1	10393	0.5%	22654	2.4%	33047	1.1%
4	4A	1	18162	0.9%	25757	2.8%	43919	1.5%
5	5A	1	48728	2.4%	29657	3.2%	78385	2.7%
6	6A	1	101170	5.0%	33535	3.6%	134705	4.6%
7	7A	1	127834	6.4%	37319	4.0%	165153	5.6%
8	8A	1	114584	5.7%	41083	4.4%	155667	5.3%
9	9A	1	106546	5.7%	45845	5.0%	152391	5.2%
10	10A	1	104487	5.3%	49177	5.3%	153664	5.2%
11	11A-Noon	1	108023	5.4%	51105	5.5%	159128	5.4%
12	Noon	1	111669	5.6%	52269	5.6%	163938	5.6%
13	1P-2P	1	116682	5.8%	51089	5.5%	167771	5.7%
14	2P-3P	1	132439	6.6%	51081	5.5%	183520	6.2%
15	3P	1	152092	7.6%	49870	5.4%	201962	6.9%
16	4P	1	163725	8.1%	47484	5.1%	211209	7.2%
17	5P	1	155264	7.7%	44127	4.8%	199391	6.8%
18	6P	1	115367	5.7%	42896	4.6%	158263	5.4%
19	7P	1	84194	4.2%	41057	4.4%	125251	4.3%
20	8P	1	68137	3.4%	38600	4.2%	106737	3.6%
21	9P	1	57758	2.9%	37081	4.0%	94839	3.2%
22	10P-11P	1	43363	2.2%	34737	3.8%	78100	2.7%
23	11P-Mid	1	30047	1.5%	30490	3.3%	60537	2.1%
			2011543	1	925382	1	2936925	1

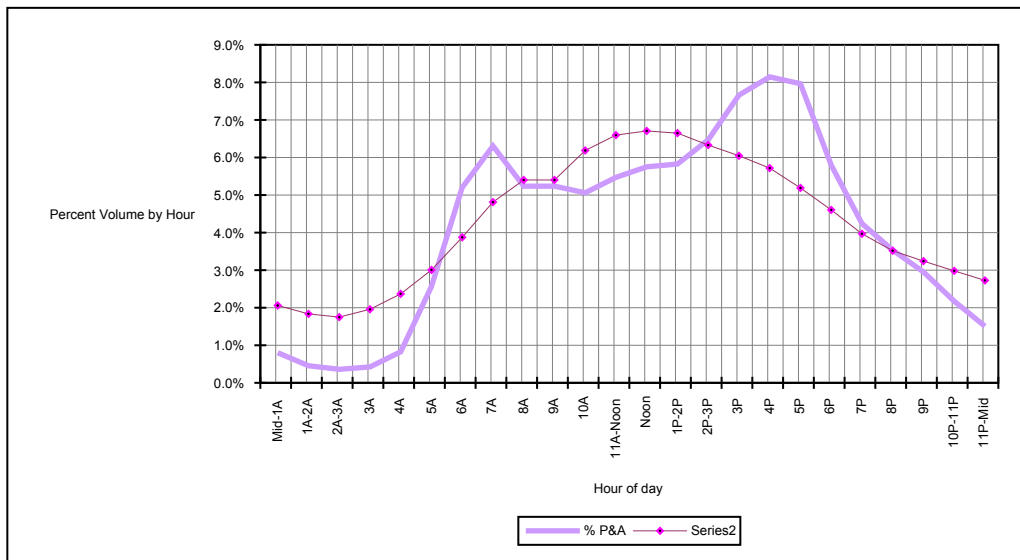


# Hourly Percent by Vehicle Type Rural Principal Arterial

Sample = 256 Counts

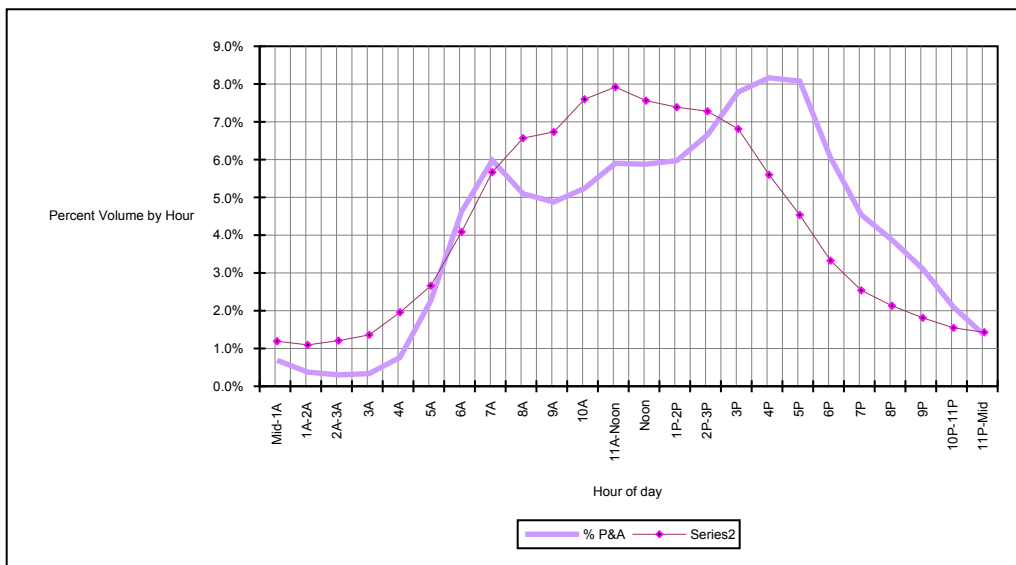
24 and 48 Hour Portable Counts Taken in 2003

Hour	Hour of Day	FC	P & A (Cars)	% P&A (Cars)	B&C (Trucks)	% B&C (Trucks)	Total	% Total
0	Mid-1A	2	28749	0.8%	14957	2.1%	43706	1.0%
1	1A-2A	2	16328	0.5%	13328	1.8%	29656	0.7%
2	2A-3A	2	12908	0.4%	12705	1.8%	25613	0.6%
3	3A	2	15180	0.4%	14219	2.0%	29399	0.7%
4	4A	2	29640	0.8%	17194	2.4%	46834	1.1%
5	5A	2	92049	2.6%	21820	3.0%	113869	2.6%
6	6A	2	186521	5.2%	28127	3.9%	214648	5.0%
7	7A	2	226152	6.3%	34933	4.8%	261085	6.1%
8	8A	2	187770	5.2%	39209	5.4%	226979	5.3%
9	9A	2	181466	5.2%	44913	5.4%	226379	5.3%
10	10A	2	188658	5.1%	47883	6.2%	236541	5.5%
11	11A-Noon	2	196162	5.5%	48683	6.6%	244845	5.7%
12	Noon	2	206231	5.8%	48266	6.7%	254497	5.9%
13	1P-2P	2	208904	5.8%	45959	6.6%	254863	5.9%
14	2P-3P	2	232017	6.5%	43887	6.3%	275904	6.4%
15	3P	2	274687	7.7%	41507	6.0%	316194	7.3%
16	4P	2	292111	8.1%	37663	5.7%	329774	7.6%
17	5P	2	285569	8.0%	33423	5.2%	318992	7.4%
18	6P	2	207878	5.8%	28806	4.6%	236684	5.5%
19	7P	2	152058	4.2%	25532	4.0%	177590	4.1%
20	8P	2	126670	3.5%	23526	3.5%	150196	3.5%
21	9P	2	105869	3.0%	21643	3.2%	127512	3.0%
22	10P-11P	2	77943	2.2%	19798	3.0%	97741	2.3%
23	11P-Mid	2	54040	1.5%	17908	2.7%	71948	1.7%
			3585560	1	725889	1	4311449	1



**Hourly Percent by Vehicle Type**  
 Rural Minor Arterial  
 Sample=233 Counts  
 24 and 48 Hour Portable Counts Taken in 2003

Hour	Hour of Day	FC	P& A (Cars)	% P&A (Cars)	B&C (Trucks)	% B&C (Trucks)	Total	% Total
0	Mid-1A	6	11765	0.7%	1721	1.2%	13486	0.7%
1	1A-2A	6	6418	0.4%	1580	1.1%	7998	0.4%
2	2A-3A	6	5173	0.3%	1743	1.2%	6916	0.4%
3	3A	6	5759	0.3%	1964	1.4%	7723	0.4%
4	4A	6	13116	0.8%	2825	2.0%	15941	0.9%
5	5A	6	38788	2.3%	3840	2.7%	42628	2.3%
6	6A	6	79116	4.6%	5896	4.1%	85012	4.6%
7	7A	6	102425	6.0%	8180	5.7%	110605	6.0%
8	8A	6	87290	5.1%	9479	6.6%	96769	5.2%
9	9A	6	83544	4.9%	9716	6.7%	93260	5.0%
10	10A	6	89761	5.2%	10963	7.6%	100724	5.4%
11	11A-Noon	6	101049	5.9%	11429	7.9%	112478	6.1%
12	Noon	6	100656	5.9%	10911	7.6%	111567	6.0%
13	1P-2P	6	102304	6.0%	10662	7.4%	112966	6.1%
14	2P-3P	6	113952	6.7%	10505	7.3%	124457	6.7%
15	3P	6	133437	7.8%	9828	6.8%	143265	7.7%
16	4P	6	139852	8.2%	8080	5.6%	147932	8.0%
17	5P	6	138317	8.1%	6544	4.5%	144861	7.8%
18	6P	6	103621	6.1%	4800	3.3%	108421	5.8%
19	7P	6	77731	4.5%	3663	2.5%	81394	4.4%
20	8P	6	66310	3.9%	3075	2.1%	69385	3.7%
21	9P	6	53165	3.1%	2613	1.8%	55778	3.0%
22	10P-11P	6	35853	2.1%	2232	1.5%	38085	2.1%
23	11P-Mid	6	23167	1.4%	2062	1.4%	25229	1.4%
			1712569	1	144311	1	1856880	1



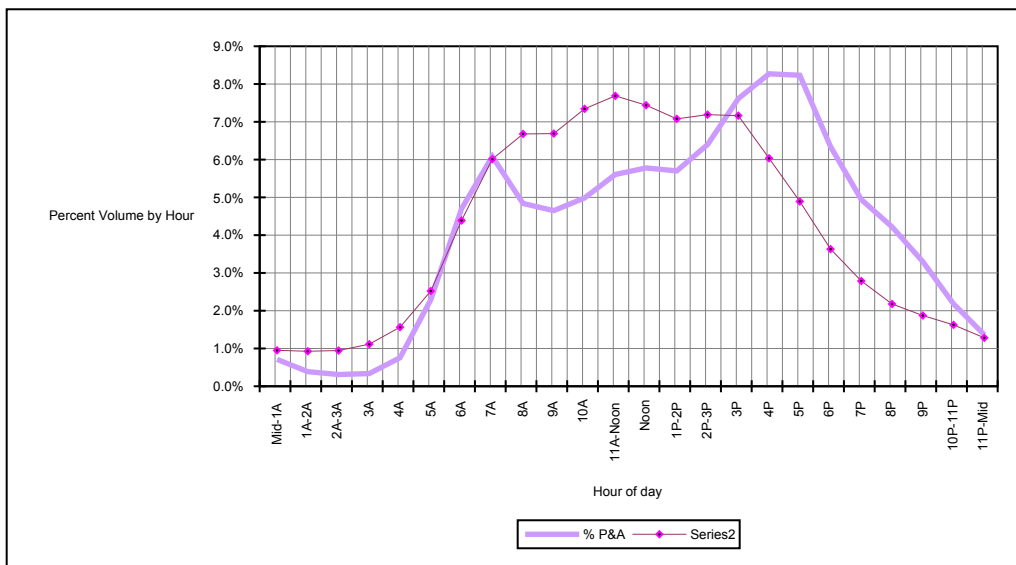
## Hourly Percent by Vehicle Type

Rural Major Collector

Sample= 506 Counts

24 and 48 Hour Portable Counts Taken in 2003

Hour	Hour of Day	FC	P& A (Cars)	% P&A (Cars)	B&C (Trucks)	% B&C (Trucks)	Total	% Total
0	Mid-1A	7	16674	0.7%	1522	1.0%	18196	0.7%
1	1A-2A	7	9062	0.4%	1483	0.9%	10545	0.4%
2	2A-3A	7	7281	0.3%	1514	0.9%	8795	0.4%
3	3A	7	7891	0.3%	1784	1.1%	9675	0.4%
4	4A	7	17709	0.8%	2503	1.6%	20212	0.8%
5	5A	7	53721	2.3%	4035	2.5%	57756	2.3%
6	6A	7	110068	4.7%	7022	4.4%	117090	4.7%
7	7A	7	142473	6.1%	9621	6.0%	152094	6.1%
8	8A	7	113316	4.8%	10687	6.7%	124003	5.0%
9	9A	7	108881	4.6%	10703	6.7%	119584	4.8%
10	10A	7	116744	5.0%	11751	7.3%	128495	5.1%
11	11A-Noon	7	131293	5.6%	12301	7.7%	143594	5.7%
12	Noon	7	135340	5.8%	11905	7.4%	147245	5.9%
13	1P-2P	7	133509	5.7%	11327	7.1%	144836	5.8%
14	2P-3P	7	149812	6.4%	11505	7.2%	161317	6.4%
15	3P	7	178291	7.6%	11463	7.2%	189754	7.6%
16	4P	7	193700	8.3%	9658	6.0%	203358	8.1%
17	5P	7	192804	8.2%	7828	4.9%	200632	8.0%
18	6P	7	148531	6.3%	5810	3.6%	154341	6.2%
19	7P	7	115762	4.9%	4460	2.8%	120222	4.8%
20	8P	7	98784	4.2%	3485	2.2%	102269	4.1%
21	9P	7	77249	3.3%	2997	1.9%	80246	3.2%
22	10P-11P	7	51083	2.2%	2600	1.6%	53683	2.1%
23	11P-Mid	7	31910	1.4%	2052	1.3%	33962	1.4%
			2341888	1	160016	1	2501904	1



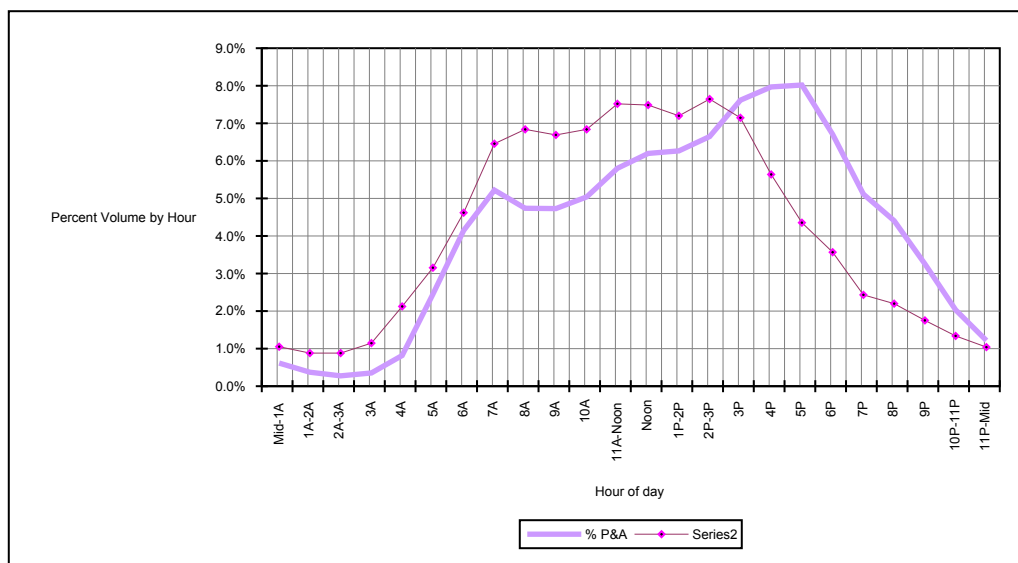
## Hourly Percent by Vehicle Type

Rual Minor Collector

Sample = 42 Counts

24 and 48 Hour Portable Counts Taken in 2003

Hour	Hour of Day	FC	P& A (Cars)	% P&A (Cars)	B&C (Trucks)	% B&C (Trucks)	Total	% Total
0	Mid-1A	8	1268	0.6%	99	1.1%	1367	0.6%
1	1A-2A	8	767	0.4%	83	0.9%	850	0.4%
2	2A-3A	8	568	0.3%	83	0.9%	651	0.3%
3	3A	8	726	0.4%	108	1.1%	834	0.4%
4	4A	8	1683	0.8%	200	2.1%	1883	0.9%
5	5A	8	5048	2.5%	297	3.2%	5345	2.5%
6	6A	8	8542	4.1%	435	4.6%	8977	4.2%
7	7A	8	10755	5.2%	608	6.5%	11363	5.3%
8	8A	8	9760	4.7%	644	6.8%	10404	4.8%
9	9A	8	9743	4.7%	630	6.7%	10373	4.8%
10	10A	8	10383	5.0%	644	6.8%	11027	5.1%
11	11A-Noon	8	11952	5.8%	708	7.5%	12660	5.9%
12	Noon	8	12769	6.2%	705	7.5%	13474	6.3%
13	1P-2P	8	12908	6.3%	678	7.2%	13586	6.3%
14	2P-3P	8	13696	6.6%	720	7.6%	14416	6.7%
15	3P	8	15690	7.6%	673	7.1%	16363	7.6%
16	4P	8	16417	8.0%	531	5.6%	16948	7.9%
17	5P	8	16521	8.0%	410	4.4%	16931	7.9%
18	6P	8	13814	6.7%	336	3.6%	14150	6.6%
19	7P	8	10534	5.1%	229	2.4%	10763	5.0%
20	8P	8	9076	4.4%	207	2.2%	9283	4.3%
21	9P	8	6706	3.3%	165	1.8%	6871	3.2%
22	10P-11P	8	4184	2.0%	126	1.3%	4310	2.0%
23	11P-Mid	8	2506	1.2%	98	1.0%	2604	1.2%
			206016	1	9417	1	215433	1



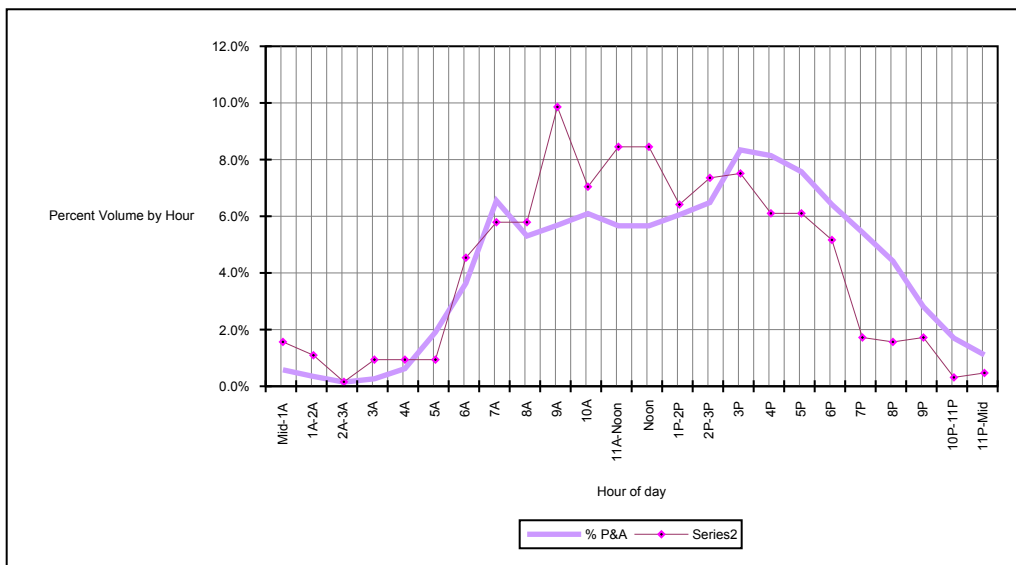
# Hourly Percent by Vehicle Type

Rual Local

Sample = 3 Counts

24 and 48 Hour Portable Counts Taken in 2003

Hour	Hour of Day	FC	P& A (Cars)	% P&A (Cars)	B&C (Trucks)	% B&C (Trucks)	Total	% Total
0	Mid-1A	9	55	0.6%	10	1.6%	65	0.6%
1	1A-2A	9	33	0.3%	7	1.1%	40	0.4%
2	2A-3A	9	14	0.1%	1	0.2%	15	0.1%
3	3A	9	25	0.3%	6	0.9%	31	0.3%
4	4A	9	59	0.6%	6	0.9%	65	0.6%
5	5A	9	181	1.9%	6	0.9%	187	1.8%
6	6A	9	345	3.6%	29	4.5%	374	3.7%
7	7A	9	621	6.5%	37	5.8%	658	6.4%
8	8A	9	503	5.3%	37	5.8%	540	5.3%
9	9A	9	539	5.7%	63	9.9%	602	5.9%
10	10A	9	578	6.1%	45	7.0%	623	6.1%
11	11A-Noon	9	537	5.7%	54	8.5%	591	5.8%
12	Noon	9	537	5.7%	54	8.5%	591	5.8%
13	1P-2P	9	574	6.1%	41	6.4%	615	6.0%
14	2P-3P	9	615	6.5%	47	7.4%	662	6.5%
15	3P	9	791	8.3%	48	7.5%	839	8.2%
16	4P	9	772	8.1%	39	6.1%	811	7.9%
17	5P	9	718	7.6%	39	6.1%	757	7.4%
18	6P	9	608	6.4%	33	5.2%	641	6.3%
19	7P	9	515	5.4%	11	1.7%	526	5.2%
20	8P	9	419	4.4%	10	1.6%	429	4.2%
21	9P	9	266	2.8%	11	1.7%	277	2.7%
22	10P-11P	9	161	1.7%	2	0.3%	163	1.6%
23	11P-Mid	9	105	1.1%	3	0.5%	108	1.1%
			9483	1	639	1	10210	1



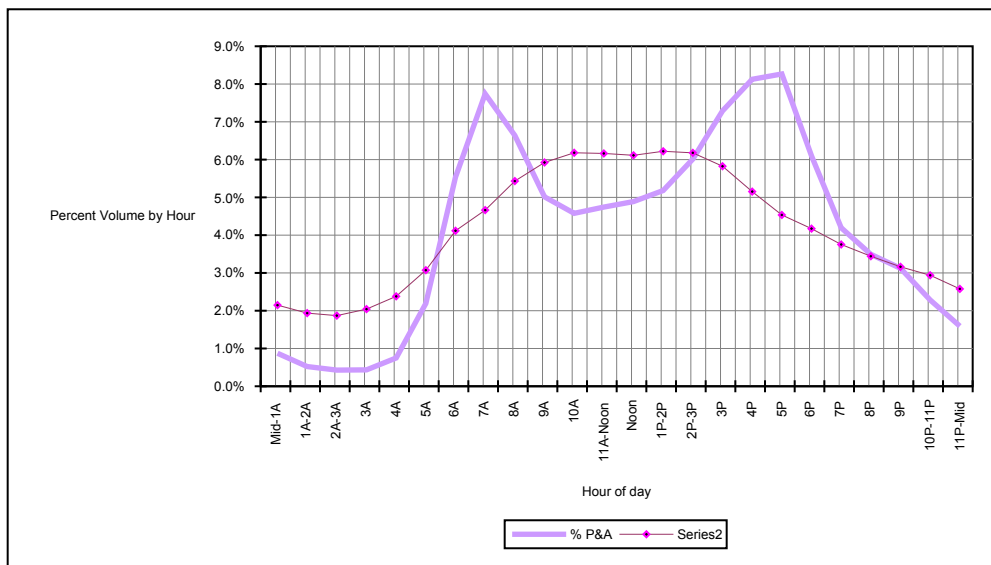
# Hourly Percent by Vehicle Type

Urban Interstate

Sample= 82 Counts

Permanent ATR's and Portable Counts Taken in 2003

Hour	Hour of Day	FC	P& A (Cars)	% P&A (Cars)	B&C (Trucks)	% B&C (Trucks)	Total	% Total
0	Mid-1A	11	185715	0.9%	68262	2.1%	253977	1.0%
1	1A-2A	11	110983	0.5%	61537	1.9%	172520	0.7%
2	2A-3A	11	90978	0.4%	59435	1.9%	150413	0.6%
3	3A	11	92303	0.4%	64911	2.0%	157214	0.6%
4	4A	11	159352	0.7%	75658	2.4%	235010	1.0%
5	5A	11	466158	2.2%	97659	3.1%	563817	2.3%
6	6A	11	1177172	5.5%	130807	4.1%	1307979	5.4%
7	7A	11	1645546	7.7%	148207	4.7%	1793753	7.3%
8	8A	11	1411274	6.6%	172628	5.4%	1583902	6.5%
9	9A	11	1066056	5.0%	188275	5.9%	1254331	5.1%
10	10A	11	973256	4.6%	196437	6.2%	1169693	4.8%
11	11A-Noon	11	1008479	4.7%	195873	6.2%	1204352	4.9%
12	Noon	11	1039380	4.9%	194312	6.1%	1233692	5.0%
13	1P-2P	11	1101625	5.2%	197691	6.2%	1299316	5.3%
14	2P-3P	11	1278530	6.0%	196371	6.2%	1474901	6.0%
15	3P	11	1549616	7.3%	185126	5.8%	1734742	7.1%
16	4P	11	1727616	8.1%	163772	5.2%	1891388	7.7%
17	5P	11	1757523	8.3%	144117	4.5%	1901640	7.8%
18	6P	11	1296760	6.1%	132602	4.2%	1429362	5.8%
19	7P	11	891916	4.2%	119287	3.8%	1011203	4.1%
20	8P	11	742448	3.5%	109408	3.4%	851856	3.5%
21	9P	11	663808	3.1%	100498	3.2%	764306	3.1%
22	10P-11P	11	485548	2.3%	93384	2.9%	578932	2.4%
23	11P-Mid	11	338398	1.6%	81912	2.6%	420310	1.7%
			21260440	1	3178169	1	24438609	1



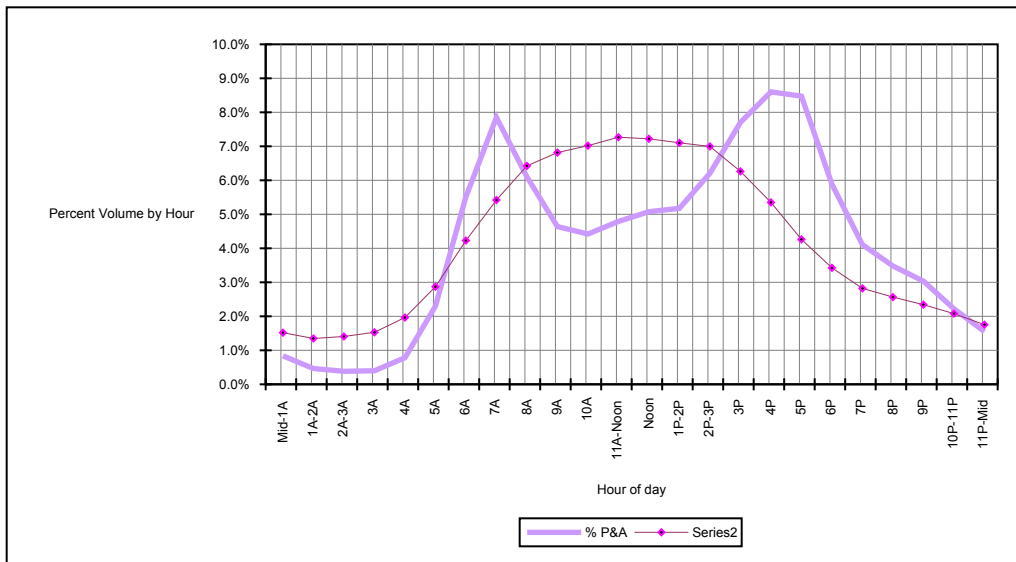
# Hourly Percent by Vehicle Type

Urban Freeway and X-Way

Sample = 81 Counts

Permanent ATR's and Portable Counts Taken in 2003

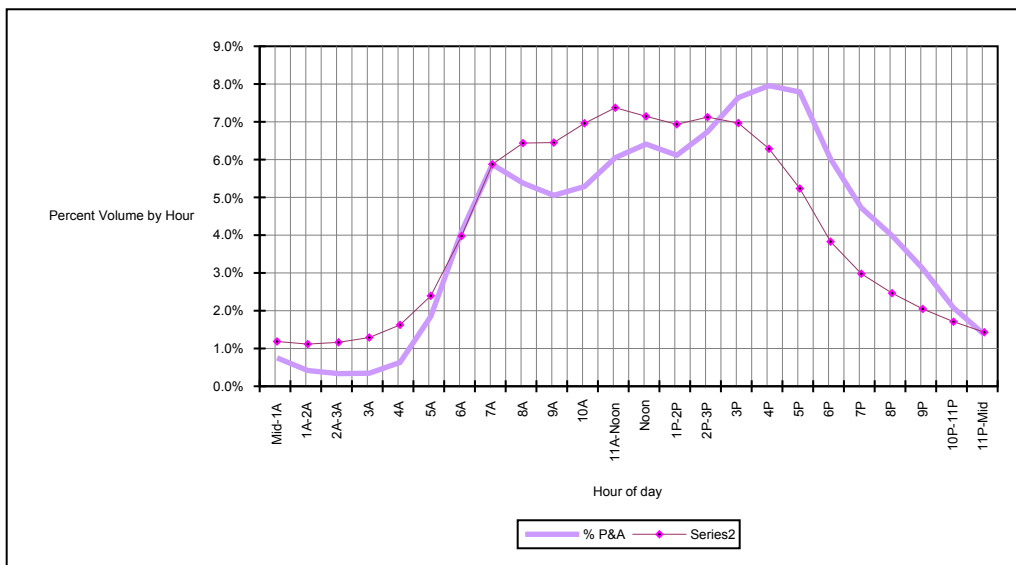
Hour	Hour of Day	FC	P&A (Cars)	% P&A (Cars)	B&C (Trucks)	% B&C (Trucks)	Total	% Total
0	Mid-1A	12	46562	0.8%	7882	1.5%	54444	0.9%
1	1A-2A	12	25816	0.5%	7000	1.3%	32816	0.5%
2	2A-3A	12	21319	0.4%	7304	1.4%	28623	0.5%
3	3A	12	22181	0.4%	7940	1.5%	30121	0.5%
4	4A	12	43444	0.8%	10199	2.0%	53643	0.9%
5	5A	12	127701	2.3%	14900	2.9%	142601	2.3%
6	6A	12	306832	5.5%	21955	4.2%	328787	5.4%
7	7A	12	436363	7.8%	28137	5.4%	464500	7.6%
8	8A	12	339173	6.1%	33349	6.4%	372522	6.1%
9	9A	12	257884	4.6%	35384	6.8%	293268	4.8%
10	10A	12	245723	4.4%	36434	7.0%	282157	4.6%
11	11A-Noon	12	266287	4.8%	37726	7.3%	304013	5.0%
12	Noon	12	282262	5.1%	37484	7.2%	319746	5.3%
13	1P-2P	12	287730	5.2%	36871	7.1%	324601	5.3%
14	2P-3P	12	345091	6.2%	36321	7.0%	381412	6.3%
15	3P	12	428199	7.7%	32516	6.3%	460715	7.6%
16	4P	12	478137	8.6%	27778	5.4%	505915	8.3%
17	5P	12	471192	8.5%	22128	4.3%	493320	8.1%
18	6P	12	327195	5.9%	17780	3.4%	344975	5.7%
19	7P	12	228284	4.1%	14646	2.8%	242930	4.0%
20	8P	12	193478	3.5%	13316	2.6%	206794	3.4%
21	9P	12	168709	3.0%	12162	2.3%	180871	3.0%
22	10P-11P	12	123473	2.2%	10788	2.1%	134261	2.2%
23	11P-Mid	12	86249	1.6%	9104	1.8%	95353	1.6%
			5559284	1	519104	1	6078388	1





**Hourly Percent by Vehicle Type**  
 Urban Principal Arterial  
 Sample=205 Counts  
 24 and 48 Hour Portable Counts Taken in 2003

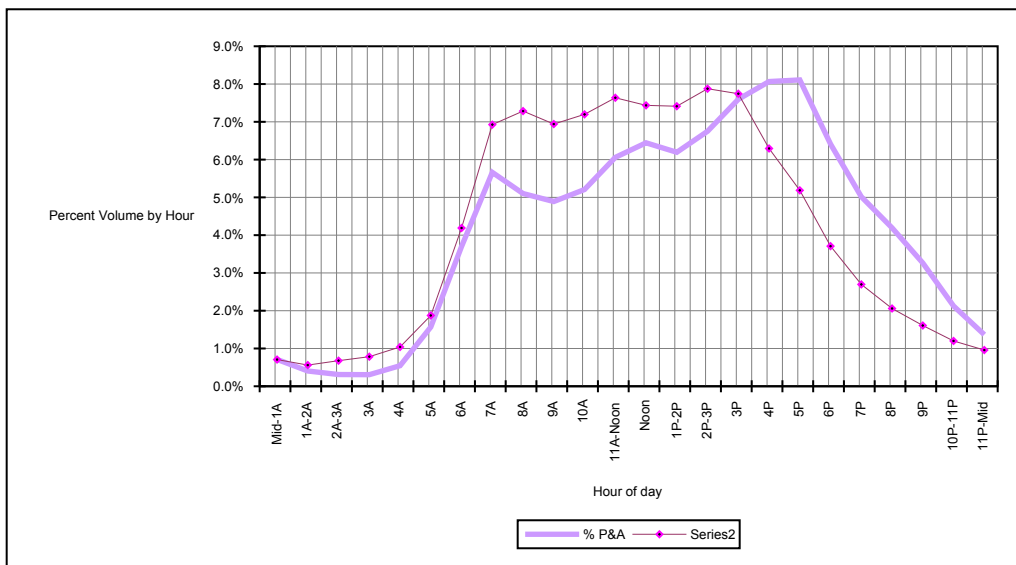
Hour	Hour of Day	FC	P& A (Cars)	% P&A (Cars)	B&C (Trucks)	% B&C (Trucks)	Total	% Total
0	Mid-1A	14	30428	0.8%	3691	1.2%	34119	0.8%
1	1A-2A	14	16898	0.4%	3477	1.1%	20375	0.5%
2	2A-3A	14	13570	0.3%	3620	1.2%	17190	0.4%
3	3A	14	14004	0.3%	4017	1.3%	18021	0.4%
4	4A	14	25596	0.6%	5058	1.6%	30654	0.7%
5	5A	14	74974	1.8%	7454	2.4%	82428	1.9%
6	6A	14	166029	4.1%	12382	4.0%	178411	4.1%
7	7A	14	238023	5.9%	18296	5.9%	256319	5.9%
8	8A	14	217923	5.4%	20044	6.4%	237967	5.5%
9	9A	14	204839	5.1%	20083	6.5%	224922	5.2%
10	10A	14	214338	5.3%	21675	7.0%	236013	5.4%
11	11A-Noon	14	245298	6.1%	22955	7.4%	268253	6.1%
12	Noon	14	259818	6.4%	22246	7.1%	282064	6.5%
13	1P-2P	14	247907	6.1%	21587	6.9%	269494	6.2%
14	2P-3P	14	273026	6.7%	22180	7.1%	295206	6.8%
15	3P	14	309738	7.6%	21694	7.0%	331432	7.6%
16	4P	14	322527	8.0%	19572	6.3%	342099	7.8%
17	5P	14	315739	7.8%	16299	5.2%	332038	7.6%
18	6P	14	243870	6.0%	11921	3.8%	255791	5.9%
19	7P	14	191464	4.7%	9274	3.0%	200738	4.6%
20	8P	14	161581	4.0%	7672	2.5%	169253	3.9%
21	9P	14	126157	3.1%	6372	2.0%	132529	3.0%
22	10P-11P	14	84116	2.1%	5319	1.7%	89435	2.0%
23	11P-Mid	14	55509	1.4%	4453	1.4%	59962	1.4%
			4053372	1	311341	1	4364713	1



## Hourly Percent by Vehicle Type

Urban Minor Arterial  
Sample = 261 Counts  
24 and 48 Hour Portable Counts Taken in 2003

Hour	Hour of Day	FC	P& A (Cars)	% P&A (Cars)	B&C (Trucks)	% B&C (Trucks)	Total	% Total
0	Mid-1A	16	26461	0.7%	1093	0.7%	27554	0.7%
1	1A-2A	16	15049	0.4%	867	0.6%	15916	0.4%
2	2A-3A	16	11569	0.3%	1047	0.7%	12616	0.3%
3	3A	16	11429	0.3%	1210	0.8%	12639	0.3%
4	4A	16	20274	0.5%	1608	1.0%	21882	0.6%
5	5A	16	58418	1.6%	2897	1.9%	61315	1.6%
6	6A	16	137789	3.7%	6475	4.2%	144264	3.7%
7	7A	16	210860	5.7%	10705	6.9%	221565	5.7%
8	8A	16	189986	5.1%	11259	7.3%	201245	5.2%
9	9A	16	182120	4.9%	10728	6.9%	192848	5.0%
10	10A	16	193975	5.2%	11125	7.2%	205100	5.3%
11	11A-Noon	16	225638	6.1%	11803	7.6%	237441	6.1%
12	Noon	16	240009	6.4%	11493	7.4%	251502	6.5%
13	1P-2P	16	230680	6.2%	11457	7.4%	242137	6.2%
14	2P-3P	16	251389	6.7%	12174	7.9%	263563	6.8%
15	3P	16	282896	7.6%	11969	7.7%	294865	7.6%
16	4P	16	300407	8.1%	9729	6.3%	310136	8.0%
17	5P	16	302019	8.1%	8016	5.2%	310035	8.0%
18	6P	16	238755	6.4%	5733	3.7%	244488	6.3%
19	7P	16	186855	5.0%	4168	2.7%	191023	4.9%
20	8P	16	156179	4.2%	3182	2.1%	159361	4.1%
21	9P	16	121524	3.3%	2486	1.6%	124010	3.2%
22	10P-11P	16	79126	2.1%	1854	1.2%	80980	2.1%
23	11P-Mid	16	50883	1.4%	1482	1.0%	52365	1.4%
			3724290	1	154560	1	3878850	1



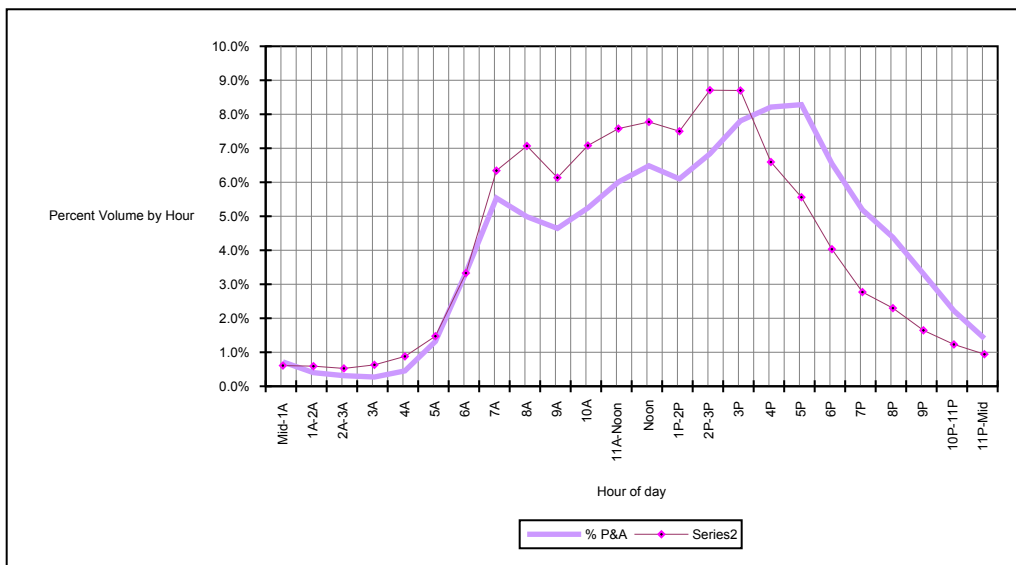
# Hourly Percent by Vehicle Type

Urban Collector

Sample= 153 Counts

24 and 48 Hour Portable Counts Taken in 2003

Hour	Hour of Day	FC	P& A (Cars)	% P&A (Cars)	B&C (Trucks)	% B&C (Trucks)	Total	% Total
0	Mid-1A	17	9624	0.7%	303	0.6%	9927	0.7%
1	1A-2A	17	5385	0.4%	294	0.6%	5679	0.4%
2	2A-3A	17	4193	0.3%	261	0.5%	4454	0.3%
3	3A	17	3653	0.3%	313	0.6%	3966	0.3%
4	4A	17	6082	0.5%	437	0.9%	6519	0.5%
5	5A	17	17730	1.3%	733	1.5%	18463	1.3%
6	6A	17	44877	3.3%	1656	3.3%	46533	3.3%
7	7A	17	74386	5.5%	3154	6.3%	77540	5.6%
8	8A	17	67015	5.0%	3515	7.1%	70530	5.1%
9	9A	17	62401	4.6%	3051	6.1%	65452	4.7%
10	10A	17	70486	5.2%	3521	7.1%	74007	5.3%
11	11A-Noon	17	80721	6.0%	3769	7.6%	84490	6.1%
12	Noon	17	87152	6.5%	3866	7.8%	91018	6.5%
13	1P-2P	17	81976	6.1%	3730	7.5%	85706	6.1%
14	2P-3P	17	91878	6.8%	4331	8.7%	96209	6.9%
15	3P	17	104900	7.8%	4326	8.7%	109226	7.8%
16	4P	17	110357	8.2%	3280	6.6%	113637	8.2%
17	5P	17	111305	8.3%	2765	5.6%	114070	8.2%
18	6P	17	87986	6.5%	2005	4.0%	89991	6.5%
19	7P	17	69733	5.2%	1378	2.8%	71111	5.1%
20	8P	17	58857	4.4%	1143	2.3%	60000	4.3%
21	9P	17	44452	3.3%	818	1.6%	45270	3.2%
22	10P-11P	17	29813	2.2%	612	1.2%	30425	2.2%
23	11P-Mid	17	18904	1.4%	469	0.9%	19373	1.4%
			1343866	1	49730	1	1393596	1



# Hourly Percent by Vehicle Type

Urban Local

Sample = 2 Counts

24 and 48 Hour Portable Counts Taken in 2003

Hour	Hour of Day	FC	P& A (Cars)	% P&A (Cars)	B&C (Trucks)	% B&C (Trucks)	Total	% Total
0	Mid-1A	19	76	0.6%	2	0.4%	78	0.6%
1	1A-2A	19	56	0.4%	2	0.4%	58	0.4%
2	2A-3A	19	35	0.3%	2	0.4%	37	0.3%
3	3A	19	67	0.5%	2	0.4%	69	0.5%
4	4A	19	93	0.7%	7	1.4%	100	0.8%
5	5A	19	266	2.1%	9	1.8%	275	2.1%
6	6A	19	477	3.8%	19	3.7%	496	3.8%
7	7A	19	640	5.1%	39	7.6%	679	5.2%
8	8A	19	365	2.9%	22	4.3%	387	3.0%
9	9A	19	375	3.0%	26	5.1%	401	3.1%
10	10A	19	423	3.4%	22	4.3%	445	3.4%
11	11A-Noon	19	408	3.3%	26	5.1%	434	3.3%
12	Noon	19	766	6.1%	44	8.6%	810	6.2%
13	1P-2P	19	856	6.9%	53	10.4%	909	7.0%
14	2P-3P	19	909	7.3%	49	9.6%	958	7.4%
15	3P	19	1103	8.8%	58	11.4%	1161	8.9%
16	4P	19	1231	9.9%	41	8.0%	1272	9.8%
17	5P	19	1258	10.1%	32	6.3%	1290	9.9%
18	6P	19	1033	8.3%	20	3.9%	1053	8.1%
19	7P	19	712	5.7%	12	2.4%	724	5.6%
20	8P	19	559	4.5%	11	2.2%	570	4.4%
21	9P	19	379	3.0%	4	0.8%	383	2.9%
22	10P-11P	19	263	2.1%	6	1.2%	269	2.1%
23	11P-Mid	19	144	1.2%	2	0.4%	146	1.1%
			12494	1	510	1	13004	1

