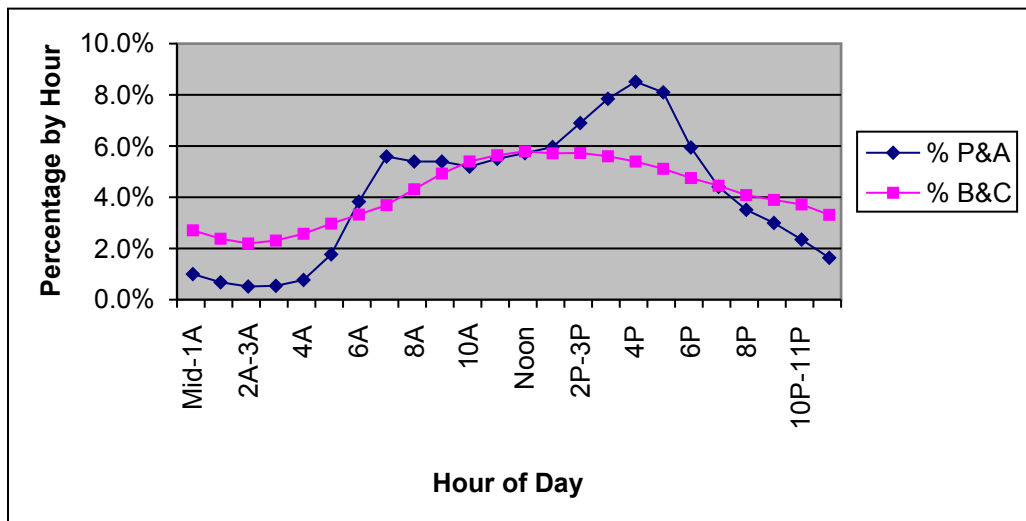


Hourly Percent by Vehicle Type Rural Interstate

Sample=22 Counts

Sample of Permanent ATR's and Portable Counts Taken in 2004

Hour	Hour of Day	FC	P& A (Cars)	% P&A (Cars)	B&C (Trucks)	% B&C (Trucks)	Total	% Total
0	Mid-1A	1	19877	1.0%	27242	2.7%	47119	1.6%
1	1A-2A	1	13483	0.7%	23947	2.4%	37430	1.3%
2	2A-3A	1	10239	0.5%	22083	2.2%	32322	1.1%
3	3A	1	10759	0.5%	23220	2.3%	33979	1.1%
4	4A	1	15321	0.8%	25887	2.6%	41208	1.4%
5	5A	1	35179	1.8%	29851	3.0%	65030	2.2%
6	6A	1	76119	3.8%	33433	3.3%	109552	3.7%
7	7A	1	111153	5.6%	37149	3.7%	148302	5.0%
8	8A	1	107258	5.4%	43356	4.3%	150614	5.0%
9	9A	1	103309	5.4%	49539	4.9%	152848	5.1%
10	10A	1	106064	5.2%	54294	5.4%	160358	5.4%
11	11A-Noon	1	109389	5.5%	56747	5.6%	166136	5.5%
12	Noon	1	113789	5.7%	58250	5.8%	172039	5.7%
13	1P-2P	1	118529	6.0%	57471	5.7%	176000	5.9%
14	2P-3P	1	137156	6.9%	57631	5.7%	194787	6.5%
15	3P	1	155959	7.8%	56329	5.6%	212288	7.1%
16	4P	1	169219	8.5%	54250	5.4%	223469	7.5%
17	5P	1	160986	8.1%	51404	5.1%	212390	7.1%
18	6P	1	118180	5.9%	47781	4.8%	165961	5.5%
19	7P	1	87619	4.4%	44760	4.5%	132379	4.4%
20	8P	1	69788	3.5%	41095	4.1%	110883	3.7%
21	9P	1	59582	3.0%	39185	3.9%	98767	3.3%
22	10P-11P	1	46663	2.3%	37401	3.7%	84064	2.8%
23	11P-Mid	1	32504	1.6%	33335	3.3%	65839	2.2%
			1988124	1	1005640	1	2993764	1



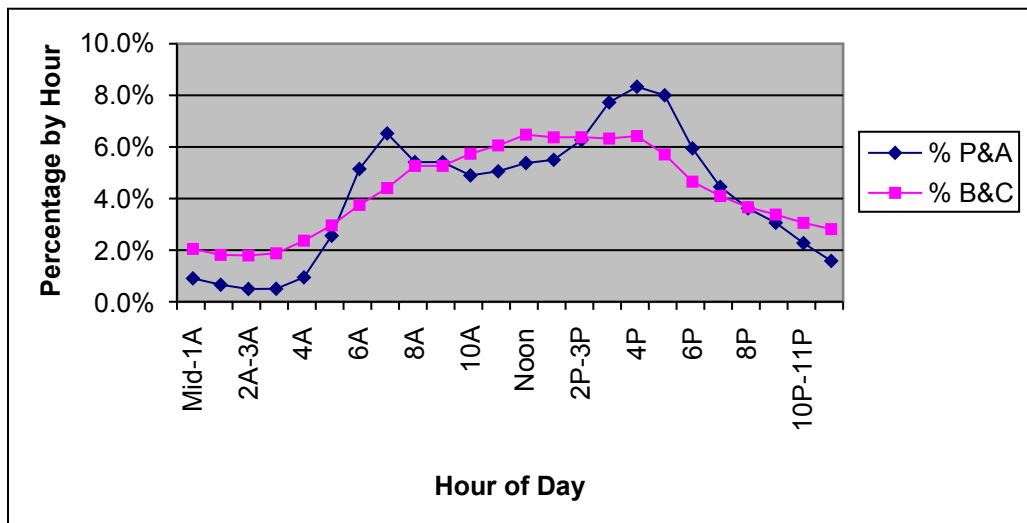
Hourly Percent by Vehicle Type

Rural Principal Arterial

Sample = 167 Counts

24 and 48 Hour Portable Counts Taken in 2004

Hour	Hour of Day	FC	P& A (Cars)	% P&A (Cars)	B&C (Trucks)	% B&C (Trucks)	Total	% Total
0	Mid-1A	2	31587	0.9%	20668	2.0%	52255	1.2%
1	1A-2A	2	23016	0.7%	18362	1.8%	41378	0.9%
2	2A-3A	2	17257	0.5%	18116	1.8%	35373	0.8%
3	3A	2	17533	0.5%	18971	1.9%	36504	0.8%
4	4A	2	32951	0.9%	23911	2.4%	56862	1.3%
5	5A	2	89113	2.6%	29899	3.0%	119012	2.6%
6	6A	2	179198	5.1%	37883	3.8%	217081	4.8%
7	7A	2	227130	6.5%	44503	4.4%	271633	6.0%
8	8A	2	188455	5.4%	53170	5.3%	241625	5.4%
9	9A	2	170508	5.4%	57933	5.3%	228441	5.1%
10	10A	2	165123	4.9%	61174	5.7%	226297	5.0%
11	11A-Noon	2	176103	5.1%	65395	6.1%	241498	5.4%
12	Noon	2	187179	5.4%	64350	6.5%	251529	5.6%
13	1P-2P	2	191529	5.5%	64396	6.4%	255925	5.7%
14	2P-3P	2	218223	6.3%	63882	6.4%	282105	6.3%
15	3P	2	269065	7.7%	64848	6.3%	333913	7.4%
16	4P	2	290141	8.3%	57665	6.4%	347806	7.7%
17	5P	2	278622	8.0%	47002	5.7%	325624	7.2%
18	6P	2	206998	5.9%	41383	4.7%	248381	5.5%
19	7P	2	155052	4.5%	36987	4.1%	192039	4.3%
20	8P	2	126129	3.6%	34140	3.7%	160269	3.6%
21	9P	2	106586	3.1%	30883	3.4%	137469	3.1%
22	10P-11P	2	79206	2.3%	28434	3.1%	107640	2.4%
23	11P-Mid	2	55145	1.6%	25783	2.8%	80928	1.8%
			3481849	1	1009738	1	4491587	1



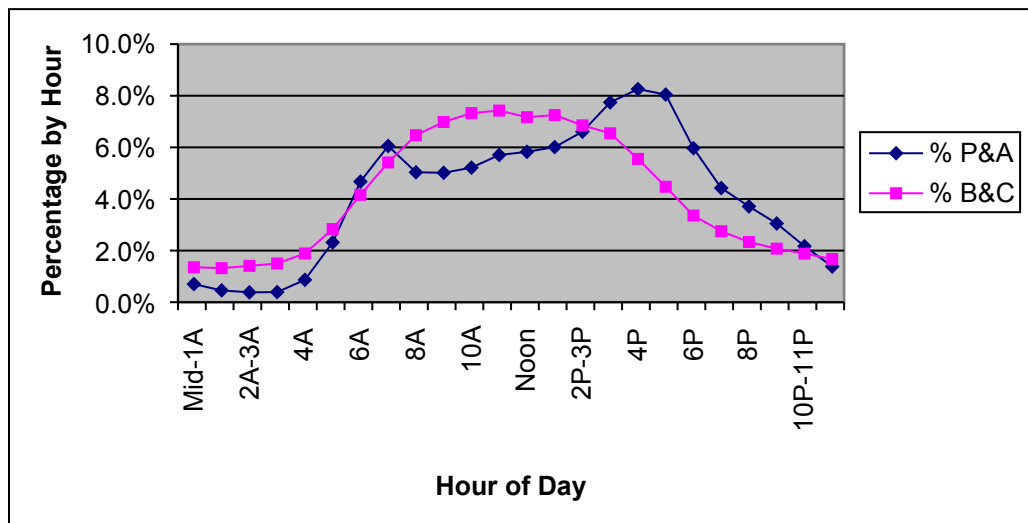
Hourly Percent by Vehicle Type

Rural Minor Arterial

Sample=295 Counts

24 and 48 Hour Portable Counts Taken in 2004

Hour	Hour of Day	FC	P& A (Cars)	% P&A (Cars)	B&C (Trucks)	% B&C (Trucks)	Total	% Total
0	Mid-1A	6	15983	0.7%	3537	1.4%	19520	0.8%
1	1A-2A	6	10424	0.5%	3443	1.3%	13867	0.5%
2	2A-3A	6	8717	0.4%	3677	1.4%	12394	0.5%
3	3A	6	8919	0.4%	3912	1.5%	12831	0.5%
4	4A	6	19778	0.9%	4932	1.9%	24710	1.0%
5	5A	6	52852	2.3%	7402	2.8%	60254	2.4%
6	6A	6	106659	4.7%	10862	4.2%	117521	4.6%
7	7A	6	138166	6.1%	14138	5.4%	152304	6.0%
8	8A	6	114883	5.0%	16896	6.5%	131779	5.2%
9	9A	6	114458	5.0%	18232	7.0%	132690	5.2%
10	10A	6	118977	5.2%	19133	7.3%	138110	5.4%
11	11A-Noon	6	130176	5.7%	19386	7.4%	149562	5.9%
12	Noon	6	132963	5.8%	18720	7.2%	151683	6.0%
13	1P-2P	6	137160	6.0%	18932	7.3%	156092	6.1%
14	2P-3P	6	150787	6.6%	17894	6.9%	168681	6.6%
15	3P	6	176685	7.7%	17090	6.5%	193775	7.6%
16	4P	6	188475	8.3%	14499	5.6%	202974	8.0%
17	5P	6	183634	8.0%	11680	4.5%	195314	7.7%
18	6P	6	136190	6.0%	8765	3.4%	144955	5.7%
19	7P	6	100962	4.4%	7181	2.8%	108143	4.3%
20	8P	6	84680	3.7%	6089	2.3%	90769	3.6%
21	9P	6	69591	3.0%	5417	2.1%	75008	2.9%
22	10P-11P	6	49542	2.2%	4912	1.9%	54454	2.1%
23	11P-Mid	6	31514	1.4%	4371	1.7%	35885	1.4%
			2282175	1	261100	1	2543275	1



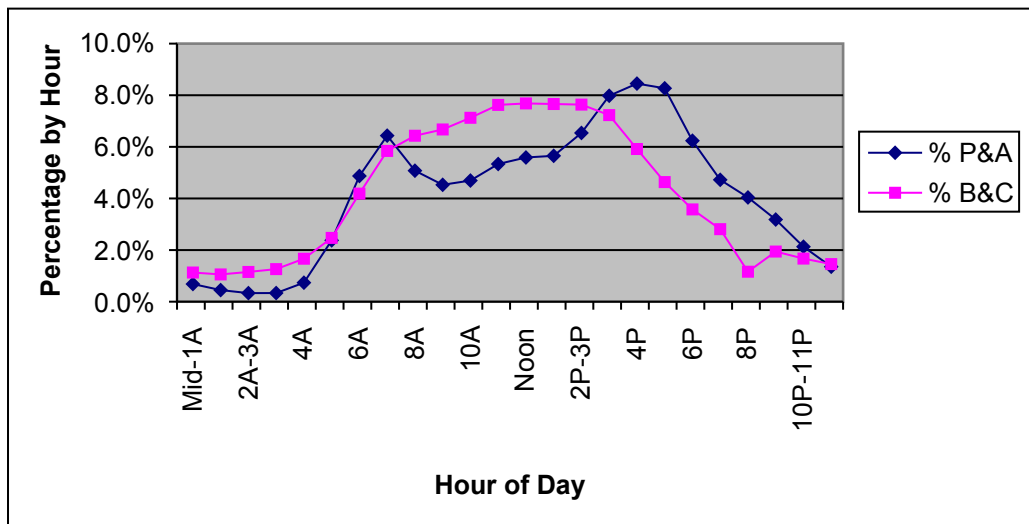
Hourly Percent by Vehicle Type

Rural Major Collector

Sample= 641 Counts

24 and 48 Hour Portable Counts Taken in 2004

Hour	Hour of Day	FC	P& A (Cars)	% P&A (Cars)	B&C (Trucks)	% B&C (Trucks)	Total	% Total
0	Mid-1A	7	19379	0.7%	2929	1.1%	22308	0.7%
1	1A-2A	7	12744	0.4%	2737	1.1%	15481	0.5%
2	2A-3A	7	9404	0.3%	2987	1.2%	12391	0.4%
3	3A	7	9475	0.3%	3271	1.3%	12746	0.4%
4	4A	7	20858	0.7%	4315	1.7%	25173	0.8%
5	5A	7	67332	2.4%	6405	2.5%	73737	2.4%
6	6A	7	137952	4.9%	10853	4.2%	148805	4.8%
7	7A	7	182261	6.4%	15139	5.8%	197400	6.4%
8	8A	7	143779	5.1%	16666	6.4%	160445	5.2%
9	9A	7	128281	4.5%	17296	6.7%	145577	4.7%
10	10A	7	132965	4.7%	18468	7.1%	151433	4.9%
11	11A-Noon	7	151092	5.3%	19762	7.6%	170854	5.5%
12	Noon	7	158274	5.6%	19911	7.7%	178185	5.8%
13	1P-2P	7	160095	5.7%	19851	7.7%	179946	5.8%
14	2P-3P	7	185198	6.5%	19792	7.6%	204990	6.6%
15	3P	7	226011	8.0%	18738	7.2%	244749	7.9%
16	4P	7	239367	8.5%	15333	5.9%	254700	8.2%
17	5P	7	234227	8.3%	12012	4.6%	246239	8.0%
18	6P	7	176667	6.2%	9267	3.6%	185934	6.0%
19	7P	7	133772	4.7%	7283	2.8%	141055	4.6%
20	8P	7	114410	4.0%	3010	1.2%	117420	3.8%
21	9P	7	90158	3.2%	5035	1.9%	95193	3.1%
22	10P-11P	7	60330	2.1%	4329	1.7%	64659	2.1%
23	11P-Mid	7	38358	1.4%	3776	1.5%	42134	1.4%
			2832389	1	259165	1	3091554	1



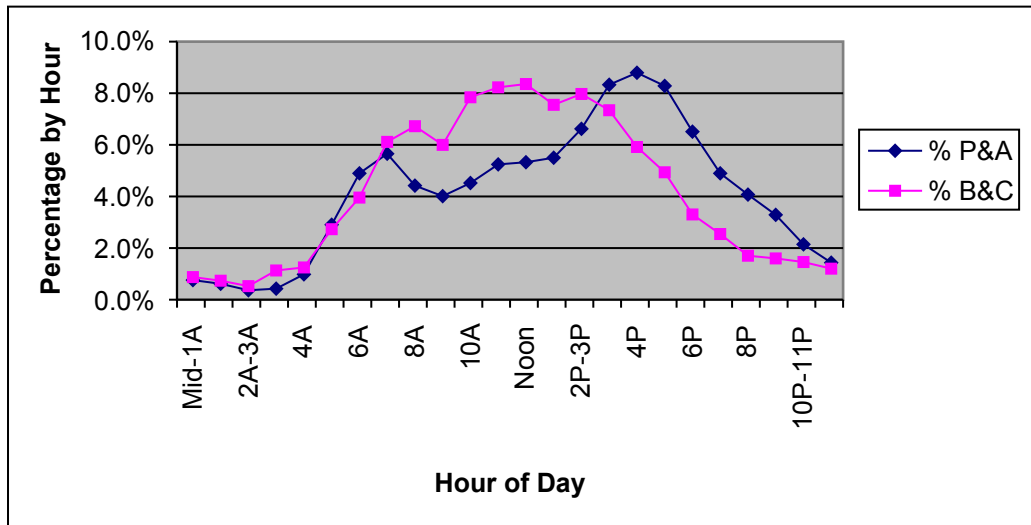
Hourly Percent by Vehicle Type

Rual Minor Collector

Sample = 49 Counts

24 and 48 Hour Portable Counts Taken in 2004

Hour	Hour of Day	FC	P& A (Cars)	% P&A (Cars)	B&C (Trucks)	% B&C (Trucks)	Total	% Total
0	Mid-1A	8	727	0.8%	75	0.9%	802	0.8%
1	1A-2A	8	590	0.6%	63	0.7%	653	0.6%
2	2A-3A	8	350	0.4%	45	0.5%	395	0.4%
3	3A	8	409	0.4%	97	1.1%	506	0.5%
4	4A	8	940	1.0%	107	1.2%	1047	1.0%
5	5A	8	2782	2.9%	234	2.7%	3016	2.9%
6	6A	8	4690	4.9%	339	4.0%	5029	4.8%
7	7A	8	5417	5.7%	524	6.1%	5941	5.7%
8	8A	8	4234	4.4%	576	6.7%	4810	4.6%
9	9A	8	3843	4.0%	514	6.0%	4357	4.2%
10	10A	8	4331	4.5%	672	7.8%	5003	4.8%
11	11A-Noon	8	5022	5.2%	705	8.2%	5727	5.5%
12	Noon	8	5102	5.3%	716	8.4%	5818	5.6%
13	1P-2P	8	5269	5.5%	647	7.6%	5916	5.7%
14	2P-3P	8	6342	6.6%	683	8.0%	7025	6.7%
15	3P	8	7979	8.3%	629	7.3%	8608	8.2%
16	4P	8	8424	8.8%	507	5.9%	8931	8.6%
17	5P	8	7935	8.3%	423	4.9%	8358	8.0%
18	6P	8	6237	6.5%	283	3.3%	6520	6.2%
19	7P	8	4690	4.9%	218	2.5%	4908	4.7%
20	8P	8	3901	4.1%	146	1.7%	4047	3.9%
21	9P	8	3149	3.3%	137	1.6%	3286	3.1%
22	10P-11P	8	2054	2.1%	125	1.5%	2179	2.1%
23	11P-Mid	8	1374	1.4%	103	1.2%	1477	1.4%
			95791	1	8568	1	104359	1



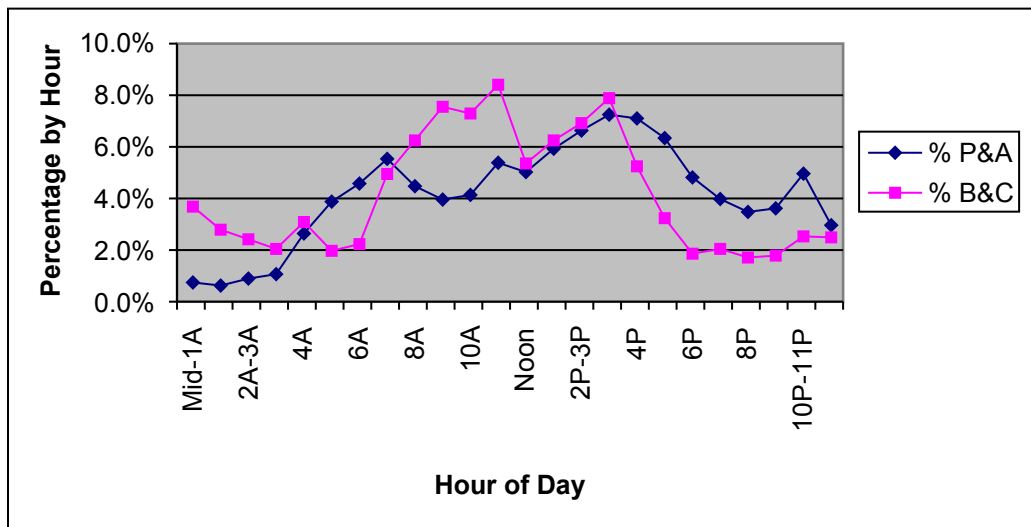
Hourly Percent by Vehicle Type

Rual Local

Sample = 5 Counts

24 and 48 Hour Portable Counts Taken in 2004

Hour	Hour of Day	FC	P& A (Cars)	% P&A (Cars)	B&C (Trucks)	% B&C (Trucks)	Total	% Total
0	Mid-1A	9	317	0.7%	99	3.7%	416	0.9%
1	1A-2A	9	266	0.6%	75	2.8%	341	0.8%
2	2A-3A	9	381	0.9%	65	2.4%	446	1.0%
3	3A	9	454	1.1%	55	2.0%	509	1.1%
4	4A	9	1124	2.6%	83	3.1%	1207	2.7%
5	5A	9	1650	3.9%	53	2.0%	1703	3.8%
6	6A	9	1948	4.6%	60	2.2%	2008	4.4%
7	7A	9	2355	5.5%	133	4.9%	2488	5.5%
8	8A	9	1904	4.5%	168	6.3%	2072	4.6%
9	9A	9	1684	4.0%	203	7.6%	1887	4.2%
10	10A	9	1761	4.1%	196	7.3%	1957	4.3%
11	11A-Noon	9	2291	5.4%	226	8.4%	2517	5.6%
12	Noon	9	2137	5.0%	144	5.4%	2281	5.0%
13	1P-2P	9	2522	5.9%	168	6.3%	2690	5.9%
14	2P-3P	9	2822	6.6%	186	6.9%	3008	6.6%
15	3P	9	3084	7.2%	212	7.9%	3296	7.3%
16	4P	9	3022	7.1%	141	5.2%	3163	7.0%
17	5P	9	2698	6.3%	87	3.2%	2785	6.2%
18	6P	9	2049	4.8%	50	1.9%	2099	4.6%
19	7P	9	1693	4.0%	55	2.0%	1748	3.9%
20	8P	9	1480	3.5%	46	1.7%	1526	3.4%
21	9P	9	1539	3.6%	48	1.8%	1587	3.5%
22	10P-11P	9	2111	5.0%	68	2.5%	2179	4.8%
23	11P-Mid	9	1261	3.0%	67	2.5%	1328	2.9%
			42553	1	2688	1	45241	1



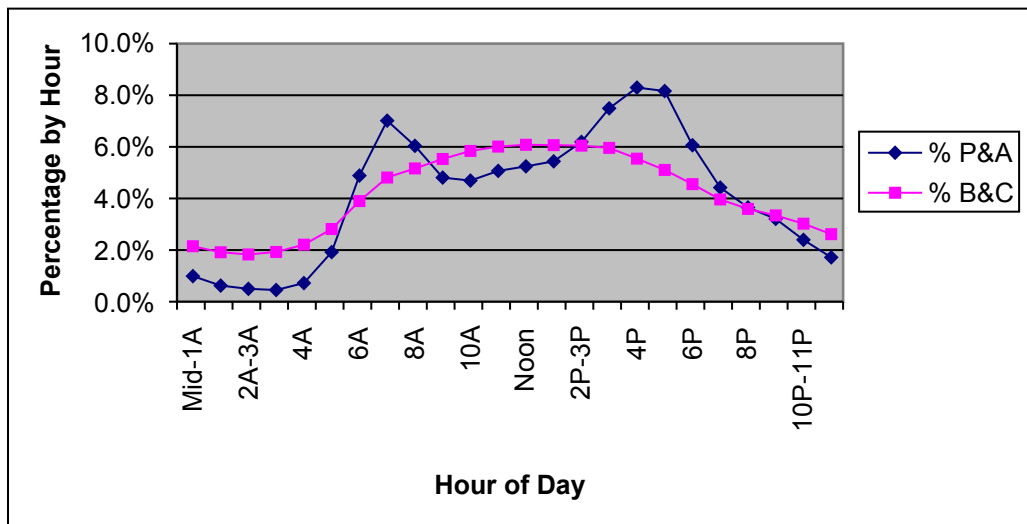
Hourly Percent by Vehicle Type

Urban Interstate

Sample= 61 Counts

Permanent ATR's and Portable Counts Taken in 2004

Hour	Hour of Day	FC	P& A (Cars)	% P&A (Cars)	B&C (Trucks)	% B&C (Trucks)	Total	% Total
0	Mid-1A	11	147868	1.0%	66826	2.1%	214694	1.2%
1	1A-2A	11	93137	0.6%	59595	1.9%	152732	0.8%
2	2A-3A	11	74399	0.5%	56932	1.8%	131331	0.7%
3	3A	11	67632	0.5%	59940	1.9%	127572	0.7%
4	4A	11	107770	0.7%	68703	2.2%	176473	1.0%
5	5A	11	286935	1.9%	87589	2.8%	374524	2.1%
6	6A	11	729945	4.9%	121251	3.9%	851196	4.7%
7	7A	11	1047924	7.0%	149673	4.8%	1197597	6.6%
8	8A	11	902134	6.0%	160622	5.2%	1062756	5.9%
9	9A	11	718254	4.8%	171997	5.5%	890251	4.9%
10	10A	11	700929	4.7%	181705	5.8%	882634	4.9%
11	11A-Noon	11	757062	5.1%	186931	6.0%	943993	5.2%
12	Noon	11	783356	5.2%	189108	6.1%	972464	5.4%
13	1P-2P	11	812365	5.4%	188693	6.1%	1001058	5.5%
14	2P-3P	11	924680	6.2%	188083	6.0%	1112763	6.2%
15	3P	11	1119140	7.5%	185366	6.0%	1304506	7.2%
16	4P	11	1239488	8.3%	172400	5.5%	1411888	7.8%
17	5P	11	1219419	8.2%	158795	5.1%	1378214	7.6%
18	6P	11	905623	6.1%	141696	4.6%	1047319	5.8%
19	7P	11	660487	4.4%	123204	4.0%	783691	4.3%
20	8P	11	545508	3.7%	111833	3.6%	657341	3.6%
21	9P	11	479269	3.2%	104011	3.3%	583280	3.2%
22	10P-11P	11	358016	2.4%	94011	3.0%	452027	2.5%
23	11P-Mid	11	256531	1.7%	81393	2.6%	337924	1.9%
			14937871	1	3110357	1	18048228	1



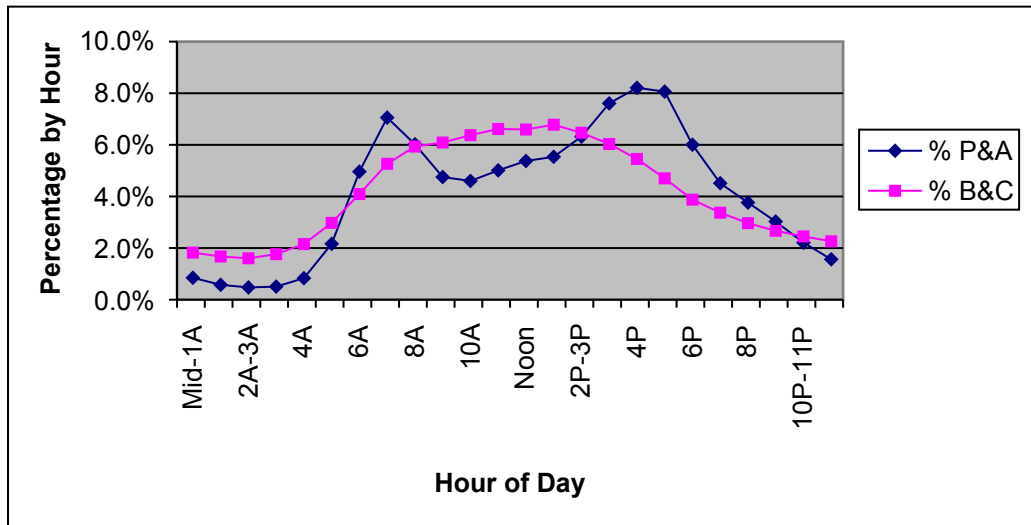
Hourly Percent by Vehicle Type

Urban Freeway and X-Way

Sample = 51 Counts

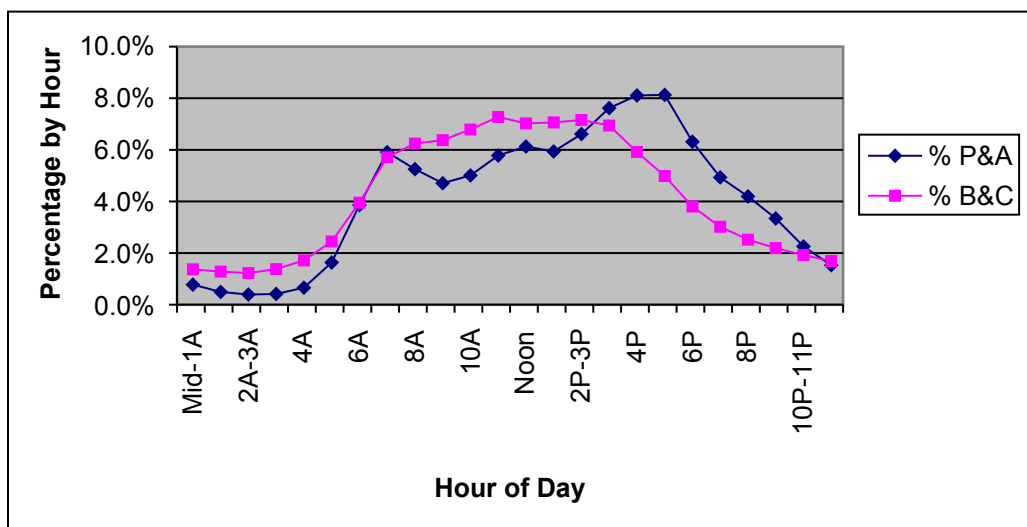
Permanent ATR's and Portable Counts Taken in 2004

Hour	Hour of Day	FC	P& A (Cars)	% P&A (Cars)	B&C (Trucks)	% B&C (Trucks)	Total	% Total
0	Mid-1A	12	26696	0.8%	7479	1.8%	34175	1.0%
1	1A-2A	12	18140	0.6%	6857	1.7%	24997	0.7%
2	2A-3A	12	14934	0.5%	6576	1.6%	21510	0.6%
3	3A	12	15927	0.5%	7228	1.8%	23155	0.7%
4	4A	12	26219	0.8%	8835	2.2%	35054	1.0%
5	5A	12	68090	2.2%	12204	3.0%	80294	2.3%
6	6A	12	156108	5.0%	16787	4.1%	172895	4.9%
7	7A	12	221997	7.1%	21584	5.3%	243581	6.8%
8	8A	12	189511	6.0%	24319	5.9%	213830	6.0%
9	9A	12	149541	4.8%	24959	6.1%	174500	4.9%
10	10A	12	144757	4.6%	26136	6.4%	170893	4.8%
11	11A-Noon	12	157662	5.0%	27118	6.6%	184780	5.2%
12	Noon	12	169146	5.4%	27032	6.6%	196178	5.5%
13	1P-2P	12	174152	5.5%	27788	6.8%	201940	5.7%
14	2P-3P	12	198823	6.3%	26515	6.5%	225338	6.3%
15	3P	12	239356	7.6%	24731	6.0%	264087	7.4%
16	4P	12	258329	8.2%	22356	5.5%	280685	7.9%
17	5P	12	253712	8.1%	19273	4.7%	272985	7.7%
18	6P	12	188918	6.0%	15888	3.9%	204806	5.8%
19	7P	12	142020	4.5%	13820	3.4%	155840	4.4%
20	8P	12	118375	3.8%	12156	3.0%	130531	3.7%
21	9P	12	95259	3.0%	10932	2.7%	106191	3.0%
22	10P-11P	12	69563	2.2%	10055	2.5%	79618	2.2%
23	11P-Mid	12	49226	1.6%	9276	2.3%	58502	1.6%
			3146461	1	409904	1	3556365	1



Hourly Percent by Vehicle Type
 Urban Principal Arterial
 Sample = 221 Counts
 24 and 48 Hour Portable Counts Taken in 2004

Hour	Hour of Day	FC	P& A (Cars)	% P&A (Cars)	B&C (Trucks)	% B&C (Trucks)	Total	% Total
0	Mid-1A	14	39611	0.8%	5410	1.4%	45021	0.8%
1	1A-2A	14	25194	0.5%	5065	1.3%	30259	0.6%
2	2A-3A	14	20038	0.4%	4840	1.2%	24878	0.5%
3	3A	14	21126	0.4%	5448	1.4%	26574	0.5%
4	4A	14	33593	0.7%	6782	1.7%	40375	0.7%
5	5A	14	83266	1.6%	9678	2.4%	92944	1.7%
6	6A	14	196553	3.9%	15619	4.0%	212172	3.9%
7	7A	14	301103	5.9%	22569	5.7%	323672	5.9%
8	8A	14	267589	5.3%	24671	6.2%	292260	5.3%
9	9A	14	239819	4.7%	25199	6.4%	265018	4.8%
10	10A	14	255227	5.0%	26826	6.8%	282053	5.1%
11	11A-Noon	14	294463	5.8%	28752	7.3%	323215	5.9%
12	Noon	14	312310	6.1%	27762	7.0%	340072	6.2%
13	1P-2P	14	302490	5.9%	27913	7.1%	330403	6.0%
14	2P-3P	14	336845	6.6%	28282	7.2%	365127	6.7%
15	3P	14	388127	7.6%	27439	6.9%	415566	7.6%
16	4P	14	413104	8.1%	23392	5.9%	436496	8.0%
17	5P	14	414169	8.1%	19708	5.0%	433877	7.9%
18	6P	14	321647	6.3%	15029	3.8%	336676	6.1%
19	7P	14	251297	4.9%	11934	3.0%	263231	4.8%
20	8P	14	213783	4.2%	9958	2.5%	223741	4.1%
21	9P	14	170296	3.3%	8675	2.2%	178971	3.3%
22	10P-11P	14	115105	2.3%	7585	1.9%	122690	2.2%
23	11P-Mid	14	77898	1.5%	6687	1.7%	84585	1.5%
			5094653	1	395223	1	5489876	1



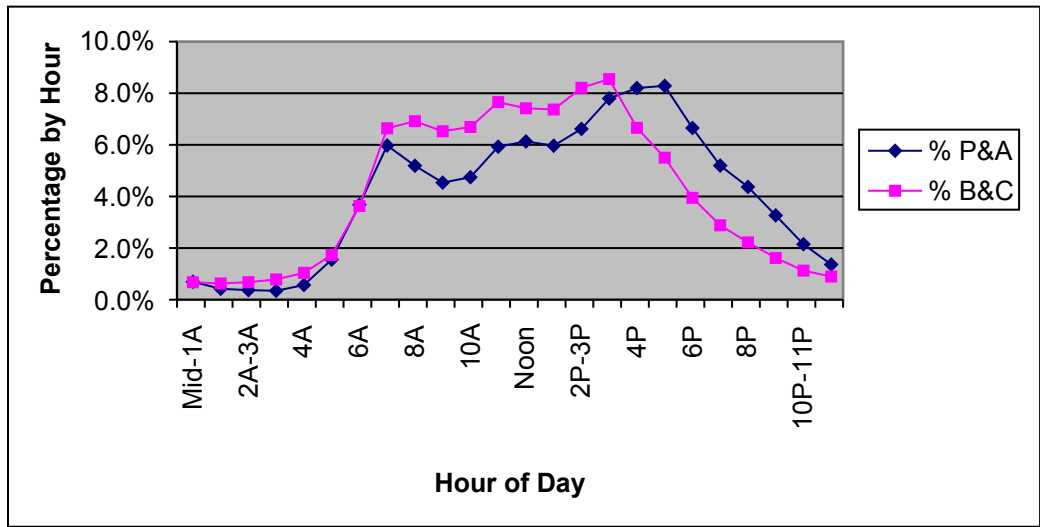
Hourly Percent by Vehicle Type

Urban Minor Arterial

Sample = 288 Counts

24 and 48 Hour Portable Counts Taken in 2004

Hour	Hour of Day	FC	P& A (Cars)	% P&A (Cars)	B&C (Trucks)	% B&C (Trucks)	Total	% Total
0	Mid-1A	16	24378	0.7%	1058	0.7%	25436	0.7%
1	1A-2A	16	14794	0.4%	983	0.6%	15777	0.4%
2	2A-3A	16	13044	0.4%	1060	0.7%	14104	0.4%
3	3A	16	12084	0.3%	1229	0.8%	13313	0.4%
4	4A	16	19987	0.6%	1629	1.0%	21616	0.6%
5	5A	16	54546	1.6%	2716	1.7%	57262	1.6%
6	6A	16	129263	3.7%	5680	3.6%	134943	3.7%
7	7A	16	209966	6.0%	10394	6.6%	220360	6.0%
8	8A	16	182390	5.2%	10822	6.9%	193212	5.3%
9	9A	16	159438	4.5%	10213	6.5%	169651	4.6%
10	10A	16	166786	4.7%	10475	6.7%	177261	4.8%
11	11A-Noon	16	208339	5.9%	11981	7.7%	220320	6.0%
12	Noon	16	215476	6.1%	11608	7.4%	227084	6.2%
13	1P-2P	16	209686	6.0%	11534	7.4%	221220	6.0%
14	2P-3P	16	232532	6.6%	12849	8.2%	245381	6.7%
15	3P	16	273983	7.8%	13378	8.5%	287361	7.8%
16	4P	16	288231	8.2%	10422	6.7%	298653	8.1%
17	5P	16	291200	8.3%	8612	5.5%	299812	8.2%
18	6P	16	233805	6.7%	6175	3.9%	239980	6.5%
19	7P	16	182599	5.2%	4511	2.9%	187110	5.1%
20	8P	16	153560	4.4%	3476	2.2%	157036	4.3%
21	9P	16	114777	3.3%	2531	1.6%	117308	3.2%
22	10P-11P	16	75526	2.1%	1765	1.1%	77291	2.1%
23	11P-Mid	16	47852	1.4%	1404	0.9%	49256	1.3%
			3514242	1	156505	1	3670747	1



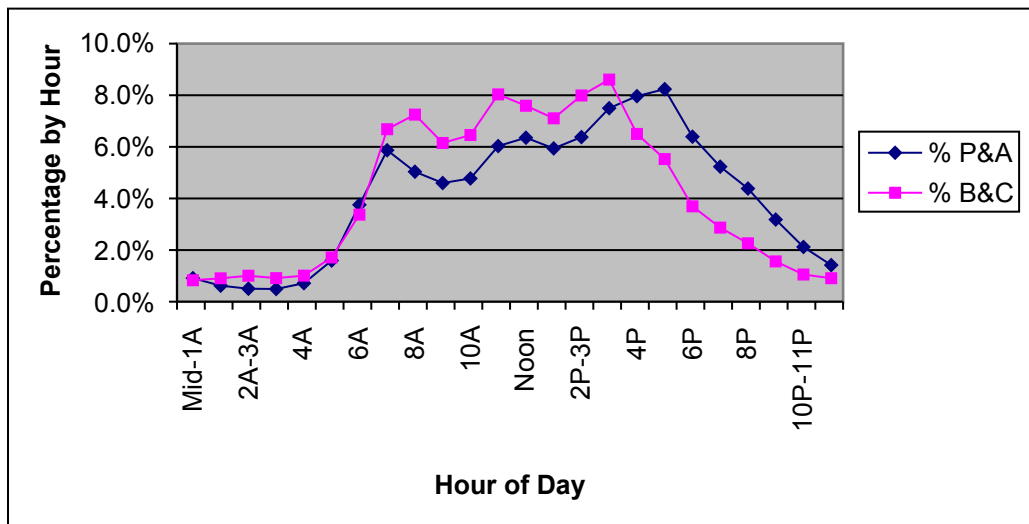
Hourly Percent by Vehicle Type

Urban Collector

Sample= 103 Counts

24 and 48 Hour Portable Counts Taken in 2004

Hour	Hour of Day	FC	P& A (Cars)	% P&A (Cars)	B&C (Trucks)	% B&C (Trucks)	Total	% Total
0	Mid-1A	17	7441	0.9%	232	0.8%	7673	0.9%
1	1A-2A	17	5058	0.6%	253	0.9%	5311	0.6%
2	2A-3A	17	4099	0.5%	281	1.0%	4380	0.5%
3	3A	17	4011	0.5%	255	0.9%	4266	0.5%
4	4A	17	5838	0.7%	282	1.0%	6120	0.7%
5	5A	17	13006	1.6%	479	1.7%	13485	1.6%
6	6A	17	30625	3.8%	942	3.4%	31567	3.7%
7	7A	17	47871	5.9%	1867	6.7%	49738	5.9%
8	8A	17	41086	5.0%	2025	7.2%	43111	5.1%
9	9A	17	37515	4.6%	1718	6.2%	39233	4.6%
10	10A	17	38956	4.8%	1804	6.5%	40760	4.8%
11	11A-Noon	17	49197	6.0%	2244	8.0%	51441	6.1%
12	Noon	17	51838	6.4%	2121	7.6%	53959	6.4%
13	1P-2P	17	48456	5.9%	1985	7.1%	50441	6.0%
14	2P-3P	17	52033	6.4%	2232	8.0%	54265	6.4%
15	3P	17	61170	7.5%	2404	8.6%	63574	7.5%
16	4P	17	64967	8.0%	1816	6.5%	66783	7.9%
17	5P	17	67199	8.2%	1544	5.5%	68743	8.1%
18	6P	17	52160	6.4%	1032	3.7%	53192	6.3%
19	7P	17	42680	5.2%	802	2.9%	43482	5.2%
20	8P	17	35769	4.4%	632	2.3%	36401	4.3%
21	9P	17	25958	3.2%	436	1.6%	26394	3.1%
22	10P-11P	17	17294	2.1%	294	1.1%	17588	2.1%
23	11P-Mid	17	11567	1.4%	254	0.9%	11821	1.4%
			815794	1	27934	1	843728	1



Hourly Percent by Vehicle Type

Urban Local

Sample = 3 Counts

24 and 48 Hour Portable Counts Taken in 2004

Hour	Hour of Day	FC	P& A (Cars)	% P&A (Cars)	B&C (Trucks)	% B&C (Trucks)	Total	% Total
0	Mid-1A	19	21	0.7%	1	0.8%	22	0.7%
1	1A-2A	19	10	0.3%	0	0.0%	10	0.3%
2	2A-3A	19	87	2.8%	4	3.3%	91	2.8%
3	3A	19	36	1.2%	0	0.0%	36	1.1%
4	4A	19	50	1.6%	0	0.0%	50	1.5%
5	5A	19	64	2.0%	0	0.0%	64	2.0%
6	6A	19	303	9.7%	10	8.1%	313	9.6%
7	7A	19	102	3.3%	2	1.6%	104	3.2%
8	8A	19	110	3.5%	13	10.6%	123	3.8%
9	9A	19	96	3.1%	2	1.6%	98	3.0%
10	10A	19	119	3.8%	9	7.3%	128	3.9%
11	11A-Noon	19	183	5.9%	9	7.3%	192	5.9%
12	Noon	19	188	6.0%	12	9.8%	200	6.2%
13	1P-2P	19	156	5.0%	5	4.1%	161	5.0%
14	2P-3P	19	432	13.8%	12	9.8%	444	13.7%
15	3P	19	204	6.5%	9	7.3%	213	6.6%
16	4P	19	172	5.5%	4	3.3%	176	5.4%
17	5P	19	172	5.5%	8	6.5%	180	5.5%
18	6P	19	121	3.9%	5	4.1%	126	3.9%
19	7P	19	93	3.0%	5	4.1%	98	3.0%
20	8P	19	93	3.0%	4	3.3%	97	3.0%
21	9P	19	69	2.2%	3	2.4%	72	2.2%
22	10P-11P	19	184	5.9%	3	2.4%	187	5.8%
23	11P-Mid	19	61	2.0%	3	2.4%	64	2.0%
			3126	1	123	1	3249	1

