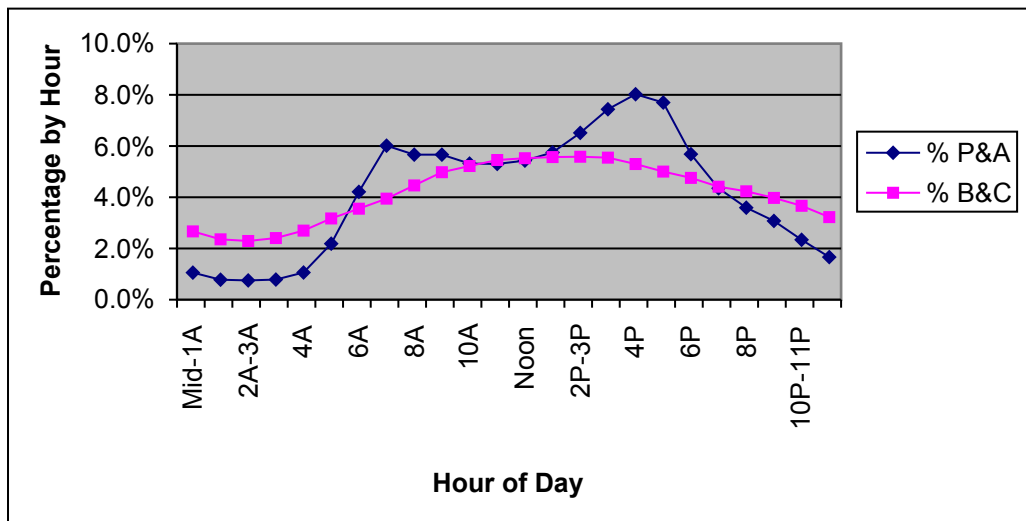


Hourly Percent by Vehicle Type Rural Interstate

Sample= 30 Counts

Sample of Permanent ATR's and Portable Counts Taken in 2005

Hour	Hour of Day	FC	P& A (Cars)	% P&A (Cars)	B&C (Trucks)	% B&C (Trucks)	Total	% Total
0	Mid-1A	1	21005	1.1%	26340	2.7%	47345	1.6%
1	1A-2A	1	15505	0.8%	23276	2.4%	38781	1.3%
2	2A-3A	1	14945	0.8%	22636	2.3%	37581	1.3%
3	3A	1	15621	0.8%	23770	2.4%	39391	1.3%
4	4A	1	21090	1.1%	26644	2.7%	47734	1.6%
5	5A	1	43468	2.2%	31327	3.2%	74795	2.5%
6	6A	1	83707	4.2%	35094	3.6%	118801	4.0%
7	7A	1	119555	6.0%	38973	3.9%	158528	5.3%
8	8A	1	112579	5.7%	44068	4.5%	156647	5.3%
9	9A	1	105651	5.7%	49164	5.0%	154815	5.2%
10	10A	1	105555	5.3%	51551	5.2%	157106	5.3%
11	11A-Noon	1	105381	5.3%	53869	5.5%	159250	5.4%
12	Noon	1	107943	5.4%	54562	5.5%	162505	5.5%
13	1P-2P	1	114309	5.8%	55004	5.6%	169313	5.7%
14	2P-3P	1	129476	6.5%	55134	5.6%	184610	6.2%
15	3P	1	147806	7.4%	54784	5.5%	202590	6.8%
16	4P	1	159482	8.0%	52320	5.3%	211802	7.1%
17	5P	1	153028	7.7%	49406	5.0%	202434	6.8%
18	6P	1	112966	5.7%	46978	4.8%	159944	5.4%
19	7P	1	86489	4.4%	43570	4.4%	130059	4.4%
20	8P	1	71408	3.6%	41798	4.2%	113206	3.8%
21	9P	1	61139	3.1%	39259	4.0%	100398	3.4%
22	10P-11P	1	46497	2.3%	36213	3.7%	82710	2.8%
23	11P-Mid	1	33058	1.7%	31845	3.2%	64903	2.2%
			1987663	100%	987585	100%	2975248	100%



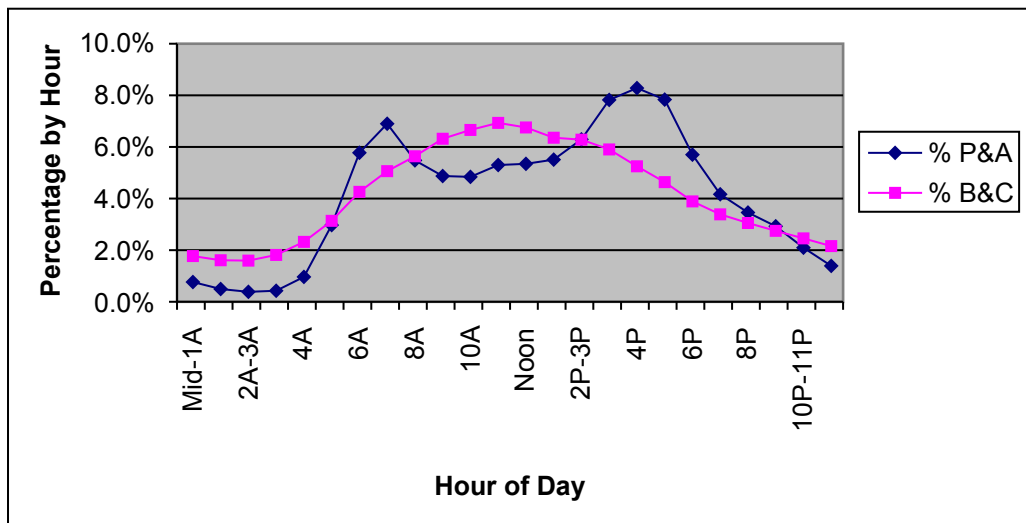
Hourly Percent by Vehicle Type

Rural Principal Arterial

Sample = 251 Counts

24 and 48 Hour Portable Counts Taken in 2005

Hour	Hour of Day	FC	P& A (Cars)	% P&A (Cars)	B&C (Trucks)	% B&C (Trucks)	Total	% Total
0	Mid-1A	2	26099	0.8%	12131	1.8%	38230	0.9%
1	1A-2A	2	16869	0.5%	11020	1.6%	27889	0.7%
2	2A-3A	2	13143	0.4%	10923	1.6%	24066	0.6%
3	3A	2	14581	0.4%	12428	1.8%	27009	0.7%
4	4A	2	32868	1.0%	15900	2.3%	48768	1.2%
5	5A	2	101342	3.0%	21478	3.1%	122820	3.0%
6	6A	2	196922	5.8%	29169	4.3%	226091	5.5%
7	7A	2	235272	6.9%	34660	5.1%	269932	6.6%
8	8A	2	186865	5.5%	38608	5.6%	225473	5.5%
9	9A	2	166188	4.9%	43257	6.3%	209445	5.1%
10	10A	2	165076	4.8%	45592	6.7%	210668	5.1%
11	11A-Noon	2	180727	5.3%	47466	6.9%	228193	5.6%
12	Noon	2	182305	5.3%	46252	6.8%	228557	5.6%
13	1P-2P	2	187858	5.5%	43529	6.4%	231387	5.7%
14	2P-3P	2	214661	6.3%	43012	6.3%	257673	6.3%
15	3P	2	266766	7.8%	40420	5.9%	307186	7.5%
16	4P	2	282435	8.3%	35944	5.2%	318379	7.8%
17	5P	2	267208	7.8%	31745	4.6%	298953	7.3%
18	6P	2	194414	5.7%	26635	3.9%	221049	5.4%
19	7P	2	142068	4.2%	23198	3.4%	165266	4.0%
20	8P	2	117954	3.5%	20902	3.1%	138856	3.4%
21	9P	2	99798	2.9%	18823	2.7%	118621	2.9%
22	10P-11P	2	71462	2.1%	16823	2.5%	88285	2.2%
23	11P-Mid	2	47432	1.4%	14774	2.2%	62206	1.5%
			3410313	100%	684689	100%	4095002	100%



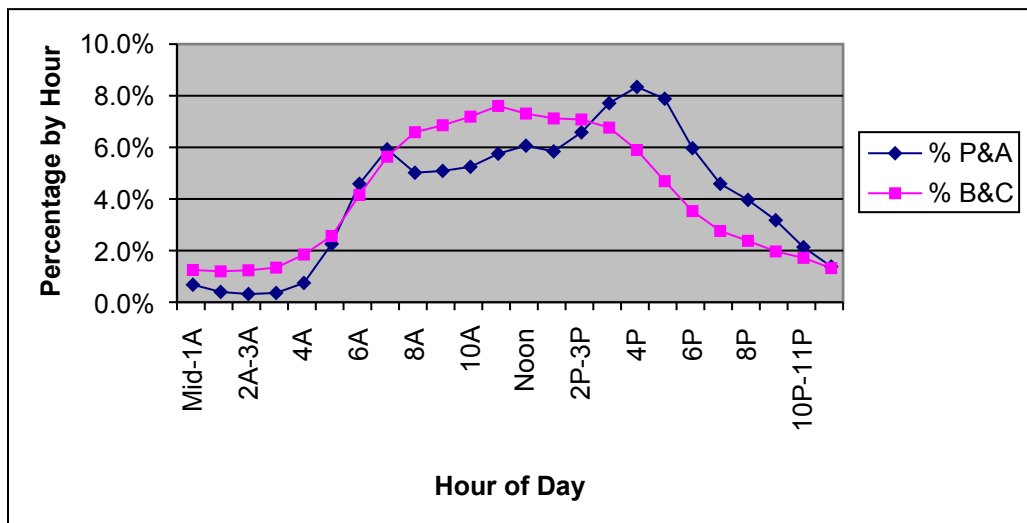
Hourly Percent by Vehicle Type

Rural Minor Arterial

Sample = 229 Counts

24 and 48 Hour Portable Counts Taken in 2005

Hour	Hour of Day	FC	P& A (Cars)	% P&A (Cars)	B&C (Trucks)	% B&C (Trucks)	Total	% Total
0	Mid-1A	6	9822	0.7%	2014	1.2%	11836	0.7%
1	1A-2A	6	5774	0.4%	1928	1.2%	7702	0.5%
2	2A-3A	6	4568	0.3%	1994	1.2%	6562	0.4%
3	3A	6	5196	0.4%	2160	1.3%	7356	0.5%
4	4A	6	10813	0.7%	2975	1.8%	13788	0.9%
5	5A	6	32727	2.3%	4136	2.6%	36863	2.3%
6	6A	6	66522	4.6%	6696	4.2%	73218	4.5%
7	7A	6	85927	5.9%	9085	5.6%	95012	5.9%
8	8A	6	72765	5.0%	10618	6.6%	83383	5.2%
9	9A	6	73798	5.1%	11053	6.9%	84851	5.3%
10	10A	6	76083	5.2%	11590	7.2%	87673	5.4%
11	11A-Noon	6	83453	5.8%	12256	7.6%	95709	5.9%
12	Noon	6	87968	6.1%	11782	7.3%	99750	6.2%
13	1P-2P	6	84736	5.8%	11480	7.1%	96216	6.0%
14	2P-3P	6	95470	6.6%	11413	7.1%	106883	6.6%
15	3P	6	111872	7.7%	10906	6.8%	122778	7.6%
16	4P	6	120997	8.3%	9504	5.9%	130501	8.1%
17	5P	6	114339	7.9%	7561	4.7%	121900	7.6%
18	6P	6	86573	6.0%	5689	3.5%	92262	5.7%
19	7P	6	66545	4.6%	4449	2.8%	70994	4.4%
20	8P	6	57492	4.0%	3834	2.4%	61326	3.8%
21	9P	6	46084	3.2%	3171	2.0%	49255	3.1%
22	10P-11P	6	30932	2.1%	2769	1.7%	33701	2.1%
23	11P-Mid	6	20029	1.4%	2130	1.3%	22159	1.4%
			1450485	100%	161193	100%	1611678	100%



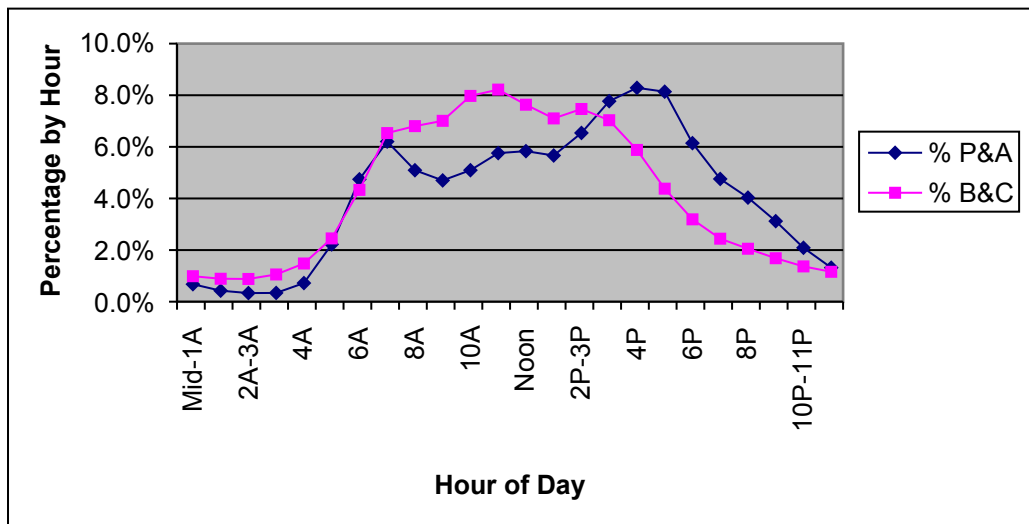
Hourly Percent by Vehicle Type

Rural Major Collector

Sample = 584 Counts

24 and 48 Hour Portable Counts Taken in 2005

Hour	Hour of Day	FC	P& A (Cars)	% P&A (Cars)	B&C (Trucks)	% B&C (Trucks)	Total	% Total
0	Mid-1A	7	17392	0.7%	2177	1.0%	19569	0.7%
1	1A-2A	7	10961	0.4%	1960	0.9%	12921	0.5%
2	2A-3A	7	8566	0.3%	1942	0.9%	10508	0.4%
3	3A	7	8712	0.3%	2326	1.1%	11038	0.4%
4	4A	7	18538	0.7%	3263	1.5%	21801	0.8%
5	5A	7	57040	2.2%	5405	2.5%	62445	2.2%
6	6A	7	121849	4.7%	9552	4.3%	131401	4.7%
7	7A	7	159408	6.2%	14406	6.5%	173814	6.2%
8	8A	7	130870	5.1%	15001	6.8%	145871	5.2%
9	9A	7	120737	4.7%	15454	7.0%	136191	4.9%
10	10A	7	130912	5.1%	17582	8.0%	148494	5.3%
11	11A-Noon	7	147914	5.8%	18122	8.2%	166036	6.0%
12	Noon	7	149870	5.8%	16831	7.6%	166701	6.0%
13	1P-2P	7	145531	5.7%	15659	7.1%	161190	5.8%
14	2P-3P	7	168003	6.5%	16465	7.5%	184468	6.6%
15	3P	7	199612	7.8%	15505	7.0%	215117	7.7%
16	4P	7	212915	8.3%	12968	5.9%	225883	8.1%
17	5P	7	209065	8.1%	9657	4.4%	218722	7.8%
18	6P	7	157849	6.1%	7036	3.2%	164885	5.9%
19	7P	7	122192	4.8%	5383	2.4%	127575	4.6%
20	8P	7	103611	4.0%	4525	2.1%	108136	3.9%
21	9P	7	80180	3.1%	3713	1.7%	83893	3.0%
22	10P-11P	7	53674	2.1%	3014	1.4%	56688	2.0%
23	11P-Mid	7	33860	1.3%	2554	1.2%	36414	1.3%
			2569261	100%	220500	100%	2789761	100%



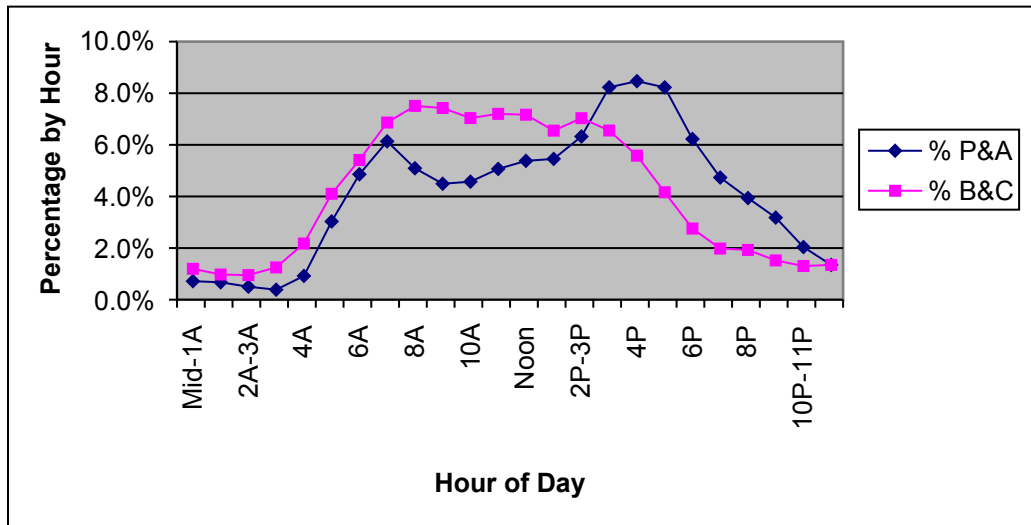
Hourly Percent by Vehicle Type

Rual Minor Collector

Sample = 53 Counts

24 and 48 Hour Portable Counts Taken in 2005

Hour	Hour of Day	FC	P& A (Cars)	% P&A (Cars)	B&C (Trucks)	% B&C (Trucks)	Total	% Total
0	Mid-1A	8	1047	0.7%	221	1.2%	1268	0.8%
1	1A-2A	8	984	0.7%	180	1.0%	1164	0.7%
2	2A-3A	8	733	0.5%	176	1.0%	909	0.6%
3	3A	8	565	0.4%	231	1.3%	796	0.5%
4	4A	8	1344	0.9%	402	2.2%	1746	1.1%
5	5A	8	4428	3.0%	758	4.1%	5186	3.2%
6	6A	8	7092	4.9%	1000	5.4%	8092	4.9%
7	7A	8	8956	6.1%	1268	6.9%	10224	6.2%
8	8A	8	7435	5.1%	1387	7.5%	8822	5.4%
9	9A	8	6559	4.5%	1372	7.4%	7931	4.8%
10	10A	8	6676	4.6%	1300	7.0%	7976	4.8%
11	11A-Noon	8	7397	5.1%	1330	7.2%	8727	5.3%
12	Noon	8	7853	5.4%	1324	7.2%	9177	5.6%
13	1P-2P	8	7964	5.5%	1210	6.6%	9174	5.6%
14	2P-3P	8	9231	6.3%	1299	7.0%	10530	6.4%
15	3P	8	12014	8.2%	1211	6.6%	13225	8.0%
16	4P	8	12362	8.5%	1031	5.6%	13393	8.1%
17	5P	8	12011	8.2%	769	4.2%	12780	7.8%
18	6P	8	9090	6.2%	509	2.8%	9599	5.8%
19	7P	8	6910	4.7%	366	2.0%	7276	4.4%
20	8P	8	5750	3.9%	356	1.9%	6106	3.7%
21	9P	8	4644	3.2%	281	1.5%	4925	3.0%
22	10P-11P	8	2976	2.0%	241	1.3%	3217	2.0%
23	11P-Mid	8	1968	1.3%	249	1.3%	2217	1.3%
			145989	100%	18471	100%	164460	100%



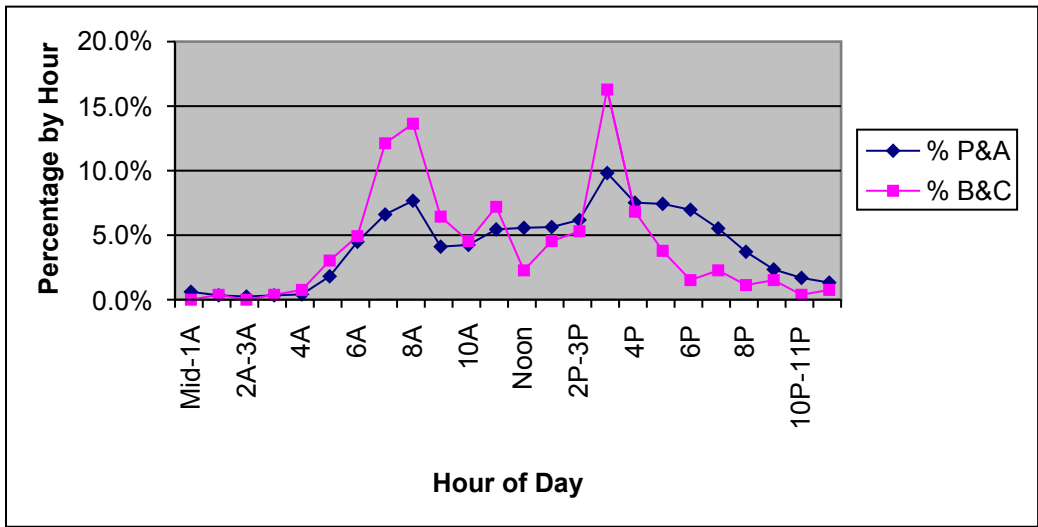
Hourly Percent by Vehicle Type

Rual Local

Sample = 4 Counts

24 and 48 Hour Portable Counts Taken in 2005

Hour	Hour of Day	FC	P& A (Cars)	% P&A (Cars)	B&C (Trucks)	% B&C (Trucks)	Total	% Total
0	Mid-1A	9	40	0.6%	0	0.0%	40	0.6%
1	1A-2A	9	22	0.3%	1	0.4%	23	0.3%
2	2A-3A	9	16	0.2%	0	0.0%	16	0.2%
3	3A	9	22	0.3%	1	0.4%	23	0.3%
4	4A	9	27	0.4%	2	0.8%	29	0.4%
5	5A	9	119	1.8%	8	3.0%	127	1.9%
6	6A	9	295	4.5%	13	4.9%	308	4.5%
7	7A	9	434	6.6%	32	12.1%	466	6.8%
8	8A	9	504	7.7%	36	13.6%	540	7.9%
9	9A	9	270	4.1%	17	6.4%	287	4.2%
10	10A	9	279	4.2%	12	4.5%	291	4.3%
11	11A-Noon	9	358	5.4%	19	7.2%	377	5.5%
12	Noon	9	366	5.6%	6	2.3%	372	5.4%
13	1P-2P	9	370	5.6%	12	4.5%	382	5.6%
14	2P-3P	9	406	6.2%	14	5.3%	420	6.1%
15	3P	9	645	9.8%	43	16.3%	688	10.1%
16	4P	9	494	7.5%	18	6.8%	512	7.5%
17	5P	9	488	7.4%	10	3.8%	498	7.3%
18	6P	9	458	7.0%	4	1.5%	462	6.8%
19	7P	9	363	5.5%	6	2.3%	369	5.4%
20	8P	9	244	3.7%	3	1.1%	247	3.6%
21	9P	9	154	2.3%	4	1.5%	158	2.3%
22	10P-11P	9	111	1.7%	1	0.4%	112	1.6%
23	11P-Mid	9	87	1.3%	2	0.8%	89	1.3%
			6572	100%	264	100%	6836	100%



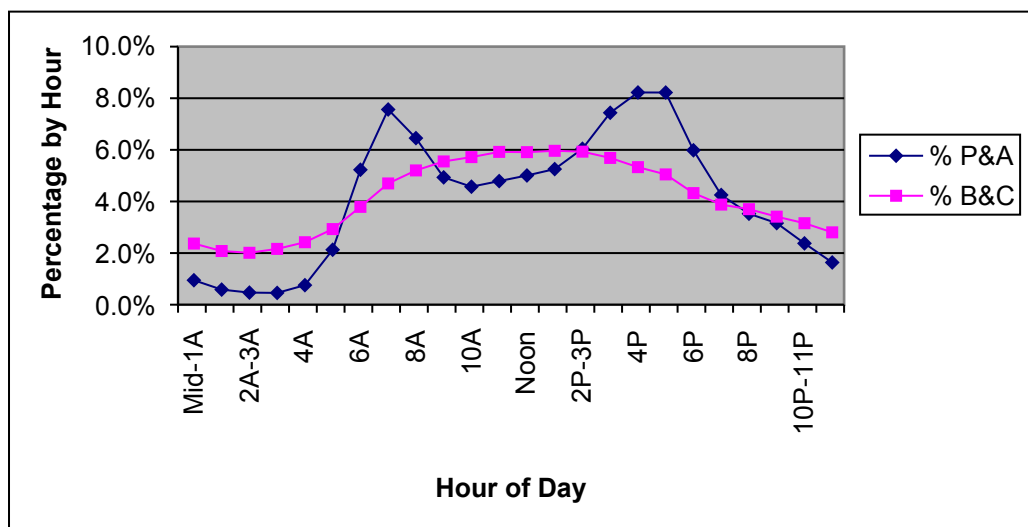
Hourly Percent by Vehicle Type

Urban Interstate

Sample= 45 Counts

Permanent ATR's and Portable Counts Taken in 2005

Hour	Hour of Day	FC	P& A (Cars)	% P&A (Cars)	B&C (Trucks)	% B&C (Trucks)	Total	% Total
0	Mid-1A	11	79513	0.9%	39435	2.4%	118948	1.2%
1	1A-2A	11	49034	0.6%	34620	2.1%	83654	0.8%
2	2A-3A	11	39299	0.5%	33480	2.0%	72779	0.7%
3	3A	11	38294	0.5%	35988	2.2%	74282	0.7%
4	4A	11	63465	0.8%	40289	2.4%	103754	1.0%
5	5A	11	178650	2.1%	48764	2.9%	227414	2.3%
6	6A	11	438780	5.2%	63101	3.8%	501881	5.0%
7	7A	11	634732	7.6%	78203	4.7%	712935	7.1%
8	8A	11	541655	6.5%	86609	5.2%	628264	6.2%
9	9A	11	413986	4.9%	92404	5.6%	506390	5.0%
10	10A	11	383653	4.6%	95191	5.7%	478844	4.8%
11	11A-Noon	11	401915	4.8%	98562	5.9%	500477	5.0%
12	Noon	11	420161	5.0%	98394	5.9%	518555	5.2%
13	1P-2P	11	440904	5.3%	99258	6.0%	540162	5.4%
14	2P-3P	11	507079	6.0%	98712	5.9%	605791	6.0%
15	3P	11	624061	7.4%	94666	5.7%	718727	7.1%
16	4P	11	690115	8.2%	88716	5.3%	778831	7.7%
17	5P	11	689910	8.2%	84030	5.0%	773940	7.7%
18	6P	11	502080	6.0%	71979	4.3%	574059	5.7%
19	7P	11	356758	4.3%	64566	3.9%	421324	4.2%
20	8P	11	295768	3.5%	61597	3.7%	357365	3.6%
21	9P	11	265189	3.2%	56785	3.4%	321974	3.2%
22	10P-11P	11	199429	2.4%	52552	3.2%	251981	2.5%
23	11P-Mid	11	137287	1.6%	46664	2.8%	183951	1.8%
			8391717	100%	1664565	100%	10056282	100%



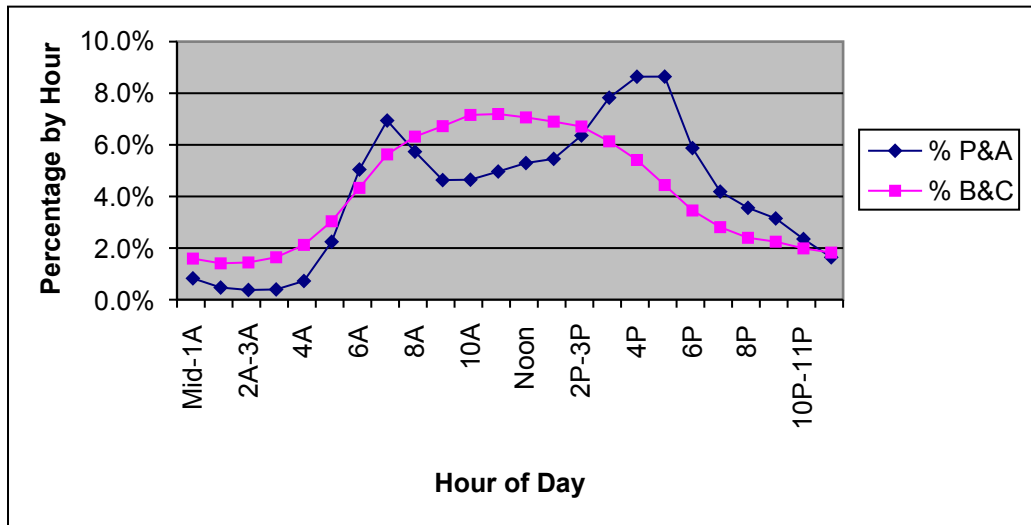
Hourly Percent by Vehicle Type

Urban Freeway and X-Way

Sample = 75 Counts

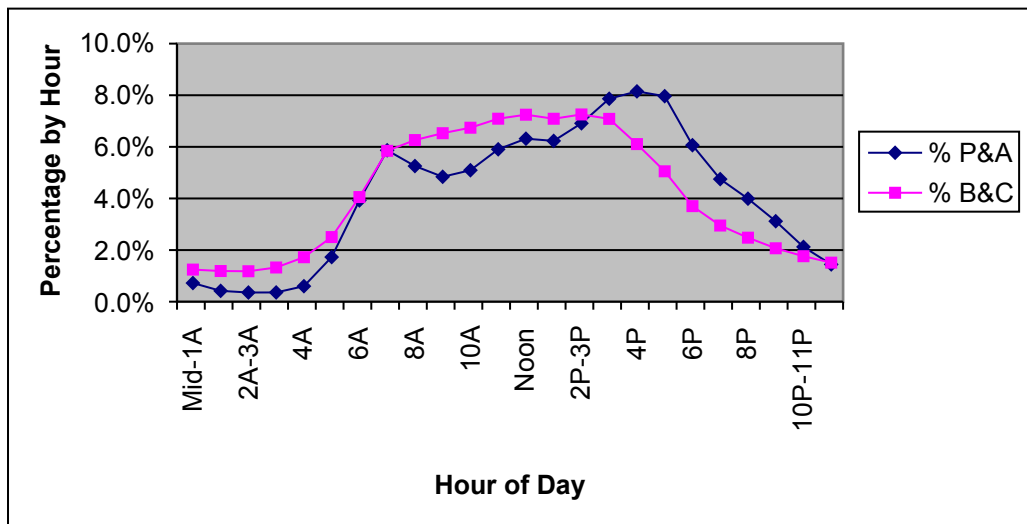
Permanent ATR's and Portable Counts Taken in 2005

Hour	Hour of Day	FC	P& A (Cars)	% P&A (Cars)	B&C (Trucks)	% B&C (Trucks)	Total	% Total
0	Mid-1A	12	24388	0.8%	5024	1.6%	29412	0.9%
1	1A-2A	12	13874	0.5%	4441	1.4%	18315	0.6%
2	2A-3A	12	11087	0.4%	4550	1.4%	15637	0.5%
3	3A	12	11701	0.4%	5183	1.6%	16884	0.5%
4	4A	12	21356	0.7%	6698	2.1%	28054	0.9%
5	5A	12	66186	2.2%	9584	3.0%	75770	2.3%
6	6A	12	148731	5.0%	13666	4.3%	162397	5.0%
7	7A	12	204693	6.9%	17758	5.6%	222451	6.8%
8	8A	12	169138	5.7%	19933	6.3%	189071	5.8%
9	9A	12	136650	4.6%	21210	6.7%	157860	4.8%
10	10A	12	137085	4.6%	22582	7.2%	159667	4.9%
11	11A-Noon	12	146432	5.0%	22695	7.2%	169127	5.2%
12	Noon	12	156122	5.3%	22279	7.1%	178401	5.5%
13	1P-2P	12	160912	5.5%	21764	6.9%	182676	5.6%
14	2P-3P	12	187625	6.4%	21168	6.7%	208793	6.4%
15	3P	12	230789	7.8%	19353	6.1%	250142	7.7%
16	4P	12	254791	8.6%	17076	5.4%	271867	8.3%
17	5P	12	254892	8.6%	14015	4.4%	268907	8.2%
18	6P	12	173229	5.9%	10903	3.5%	184132	5.6%
19	7P	12	123461	4.2%	8865	2.8%	132326	4.1%
20	8P	12	104947	3.6%	7565	2.4%	112512	3.4%
21	9P	12	92830	3.1%	7089	2.2%	99919	3.1%
22	10P-11P	12	69313	2.4%	6268	2.0%	75581	2.3%
23	11P-Mid	12	48412	1.6%	5757	1.8%	54169	1.7%
			2948644	100%	315426	100%	3264070	100%



Hourly Percent by Vehicle Type
 Urban Principal Arterial
 Sample = 250 Counts
 24 and 48 Hour Portable Counts Taken in 2005

Hour	Hour of Day	FC	P& A (Cars)	% P&A (Cars)	B&C (Trucks)	% B&C (Trucks)	Total	% Total
0	Mid-1A	14	34469	0.7%	4959	1.2%	39428	0.8%
1	1A-2A	14	20026	0.4%	4737	1.2%	24763	0.5%
2	2A-3A	14	16952	0.4%	4703	1.2%	21655	0.4%
3	3A	14	17095	0.4%	5283	1.3%	22378	0.4%
4	4A	14	28653	0.6%	6868	1.7%	35521	0.7%
5	5A	14	82471	1.7%	9981	2.5%	92452	1.8%
6	6A	14	187204	3.9%	16164	4.1%	203368	3.9%
7	7A	14	279939	5.9%	23307	5.8%	303246	5.9%
8	8A	14	250742	5.3%	24968	6.3%	275710	5.3%
9	9A	14	230891	4.8%	26030	6.5%	256921	5.0%
10	10A	14	243021	5.1%	26879	6.7%	269900	5.2%
11	11A-Noon	14	281695	5.9%	28270	7.1%	309965	6.0%
12	Noon	14	301320	6.3%	28889	7.2%	330209	6.4%
13	1P-2P	14	297263	6.2%	28263	7.1%	325526	6.3%
14	2P-3P	14	329769	6.9%	28926	7.3%	358695	6.9%
15	3P	14	375181	7.9%	28245	7.1%	403426	7.8%
16	4P	14	388768	8.1%	24348	6.1%	413116	8.0%
17	5P	14	379935	8.0%	20143	5.1%	400078	7.7%
18	6P	14	289307	6.1%	14762	3.7%	304069	5.9%
19	7P	14	226586	4.7%	11766	3.0%	238352	4.6%
20	8P	14	190447	4.0%	9890	2.5%	200337	3.9%
21	9P	14	148763	3.1%	8251	2.1%	157014	3.0%
22	10P-11P	14	101270	2.1%	7025	1.8%	108295	2.1%
23	11P-Mid	14	68895	1.4%	6032	1.5%	74927	1.4%
			4770662	100%	398689	100%	5169351	100%



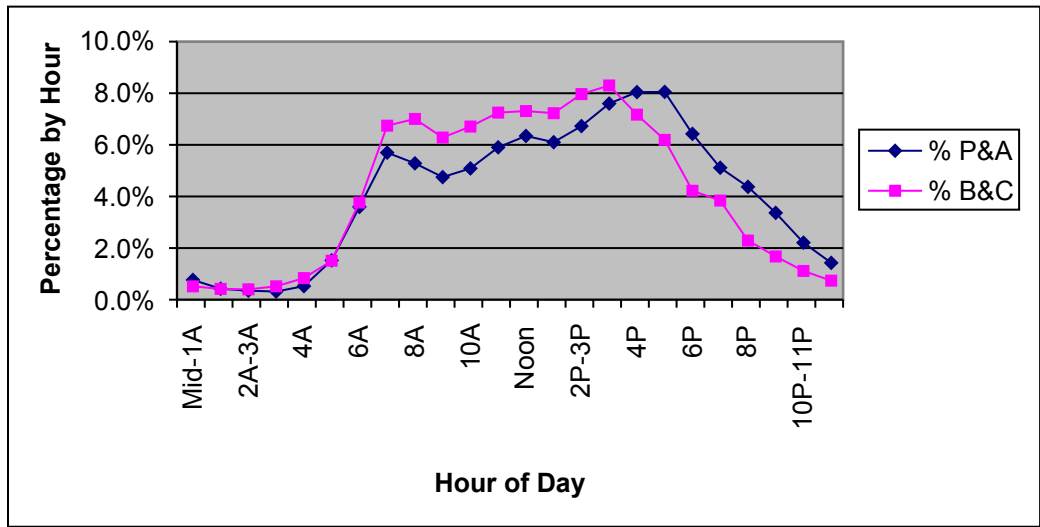
Hourly Percent by Vehicle Type

Urban Minor Arterial

Sample = 328 Counts

24 and 48 Hour Portable Counts Taken in 2005

Hour	Hour of Day	FC	P& A (Cars)	% P&A (Cars)	B&C (Trucks)	% B&C (Trucks)	Total	% Total
0	Mid-1A	16	35536	0.8%	1239	0.5%	36775	0.8%
1	1A-2A	16	19627	0.4%	1006	0.4%	20633	0.4%
2	2A-3A	16	16148	0.3%	962	0.4%	17110	0.4%
3	3A	16	14654	0.3%	1243	0.5%	15897	0.3%
4	4A	16	24352	0.5%	2008	0.8%	26360	0.5%
5	5A	16	70668	1.5%	3625	1.5%	74293	1.5%
6	6A	16	166681	3.6%	9036	3.8%	175717	3.6%
7	7A	16	264235	5.7%	16191	6.7%	280426	5.7%
8	8A	16	244984	5.3%	16820	7.0%	261804	5.4%
9	9A	16	220289	4.8%	15087	6.3%	235376	4.8%
10	10A	16	235875	5.1%	16110	6.7%	251985	5.2%
11	11A-Noon	16	273773	5.9%	17407	7.2%	291180	6.0%
12	Noon	16	294235	6.3%	17553	7.3%	311788	6.4%
13	1P-2P	16	283006	6.1%	17351	7.2%	300357	6.2%
14	2P-3P	16	311935	6.7%	19129	8.0%	331064	6.8%
15	3P	16	352394	7.6%	19933	8.3%	372327	7.6%
16	4P	16	372998	8.0%	17217	7.2%	390215	8.0%
17	5P	16	373363	8.1%	14872	6.2%	388235	8.0%
18	6P	16	297948	6.4%	10139	4.2%	308087	6.3%
19	7P	16	237078	5.1%	9221	3.8%	246299	5.0%
20	8P	16	202782	4.4%	5503	2.3%	208285	4.3%
21	9P	16	156028	3.4%	4022	1.7%	160050	3.3%
22	10P-11P	16	102476	2.2%	2674	1.1%	105150	2.2%
23	11P-Mid	16	66171	1.4%	1771	0.7%	67942	1.4%
			4637236	100%	240119	100%	4877355	100%



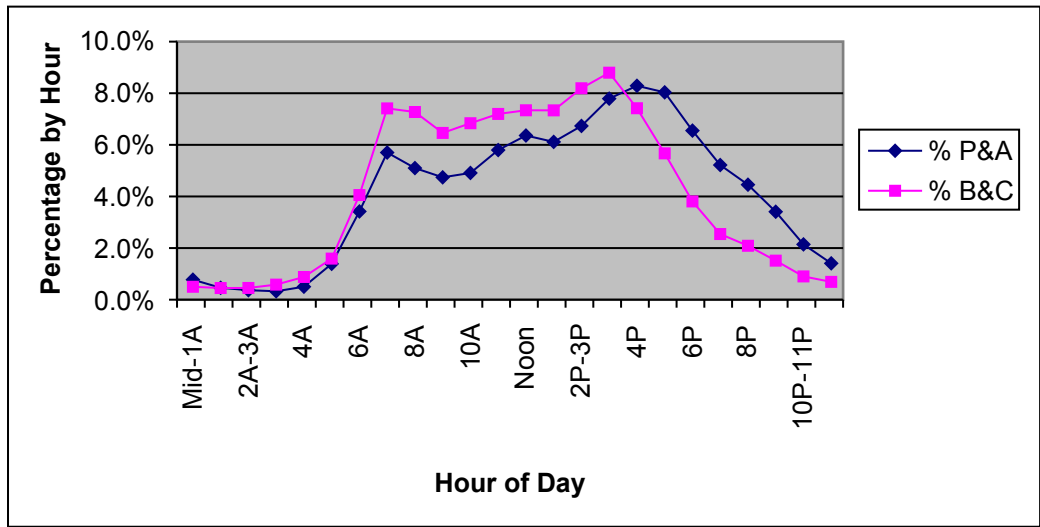
Hourly Percent by Vehicle Type

Urban Collector

Sample = 191 Counts

24 and 48 Hour Portable Counts Taken in 2005

Hour	Hour of Day	FC	P& A (Cars)	% P&A (Cars)	B&C (Trucks)	% B&C (Trucks)	Total	% Total
0	Mid-1A	17	11875	0.8%	329	0.5%	12204	0.8%
1	1A-2A	17	7051	0.5%	297	0.5%	7348	0.5%
2	2A-3A	17	5626	0.4%	299	0.5%	5925	0.4%
3	3A	17	4987	0.3%	384	0.6%	5371	0.3%
4	4A	17	7694	0.5%	579	0.9%	8273	0.5%
5	5A	17	21253	1.4%	1047	1.6%	22300	1.4%
6	6A	17	52356	3.4%	2667	4.1%	55023	3.4%
7	7A	17	87287	5.7%	4875	7.4%	92162	5.8%
8	8A	17	78084	5.1%	4783	7.3%	82867	5.2%
9	9A	17	72581	4.7%	4250	6.5%	76831	4.8%
10	10A	17	75186	4.9%	4497	6.8%	79683	5.0%
11	11A-Noon	17	88766	5.8%	4734	7.2%	93500	5.9%
12	Noon	17	97398	6.4%	4827	7.3%	102225	6.4%
13	1P-2P	17	93606	6.1%	4825	7.3%	98431	6.2%
14	2P-3P	17	103075	6.7%	5388	8.2%	108463	6.8%
15	3P	17	119266	7.8%	5785	8.8%	125051	7.8%
16	4P	17	126902	8.3%	4879	7.4%	131781	8.3%
17	5P	17	123002	8.0%	3729	5.7%	126731	7.9%
18	6P	17	100303	6.6%	2504	3.8%	102807	6.4%
19	7P	17	79888	5.2%	1673	2.5%	81561	5.1%
20	8P	17	68226	4.5%	1374	2.1%	69600	4.4%
21	9P	17	52176	3.4%	995	1.5%	53171	3.3%
22	10P-11P	17	32804	2.1%	593	0.9%	33397	2.1%
23	11P-Mid	17	21563	1.4%	454	0.7%	22017	1.4%
			1530955	100%	65767	100%	1596722	100%



Hourly Percent by Vehicle Type

Urban Local

Sample = 6 Counts

24 and 48 Hour Portable Counts Taken in 2005

Hour	Hour of Day	FC	P& A (Cars)	% P&A (Cars)	B&C (Trucks)	% B&C (Trucks)	Total	% Total
0	Mid-1A	19	267	0.7%	9	0.6%	276	0.7%
1	1A-2A	19	155	0.4%	14	0.9%	169	0.4%
2	2A-3A	19	150	0.4%	15	0.9%	165	0.4%
3	3A	19	173	0.5%	12	0.7%	185	0.5%
4	4A	19	288	0.8%	12	0.7%	300	0.8%
5	5A	19	745	1.9%	21	1.3%	766	1.9%
6	6A	19	1886	4.9%	46	2.9%	1932	4.8%
7	7A	19	3011	7.9%	154	9.6%	3165	7.9%
8	8A	19	2126	5.5%	138	8.6%	2264	5.7%
9	9A	19	2054	5.4%	111	6.9%	2165	5.4%
10	10A	19	2264	5.9%	115	7.1%	2379	6.0%
11	11A-Noon	19	2577	6.7%	142	8.8%	2719	6.8%
12	Noon	19	2004	5.2%	78	4.8%	2082	5.2%
13	1P-2P	19	2018	5.3%	84	5.2%	2102	5.3%
14	2P-3P	19	2251	5.9%	128	7.9%	2379	6.0%
15	3P	19	2609	6.8%	124	7.7%	2733	6.8%
16	4P	19	2536	6.6%	133	8.3%	2669	6.7%
17	5P	19	2738	7.1%	92	5.7%	2830	7.1%
18	6P	19	2235	5.8%	34	2.1%	2269	5.7%
19	7P	19	1886	4.9%	33	2.0%	1919	4.8%
20	8P	19	1596	4.2%	44	2.7%	1640	4.1%
21	9P	19	1293	3.4%	30	1.9%	1323	3.3%
22	10P-11P	19	892	2.3%	27	1.7%	919	2.3%
23	11P-Mid	19	561	1.5%	15	0.9%	576	1.4%
			38315	100%	1611	100%	39926	100%

