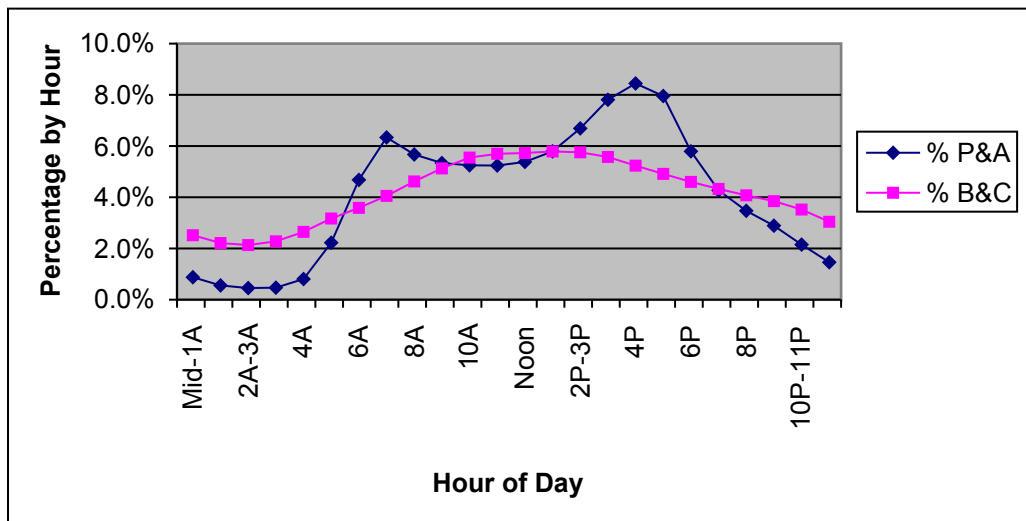


Hourly Percent by Vehicle Type Rural Interstate

Sample= 24 Counts

Sample of Permanent ATR's and Portable Counts Taken in 2006

Hour	Hour of Day	FC	P& A (Cars)	% P&A (Cars)	B&C (Trucks)	% B&C (Trucks)	Total	% Total
0	Mid-1A	1	25254	0.9%	34710	2.5%	59964	1.4%
1	1A-2A	1	16046	0.6%	30504	2.2%	46550	1.1%
2	2A-3A	1	13084	0.5%	29410	2.1%	42494	1.0%
3	3A	1	13513	0.5%	31420	2.3%	44933	1.1%
4	4A	1	23236	0.8%	36513	2.6%	59749	1.4%
5	5A	1	64095	2.2%	43711	3.2%	107806	2.5%
6	6A	1	134799	4.7%	49442	3.6%	184241	4.3%
7	7A	1	182565	6.3%	55885	4.1%	238450	5.6%
8	8A	1	163404	5.7%	63673	4.6%	227077	5.3%
9	9A	1	153792	5.3%	70706	5.1%	224498	5.3%
10	10A	1	151197	5.2%	76517	5.5%	227714	5.3%
11	11A-Noon	1	150947	5.2%	78557	5.7%	229504	5.4%
12	Noon	1	154999	5.4%	78980	5.7%	233979	5.5%
13	1P-2P	1	166887	5.8%	79819	5.8%	246706	5.8%
14	2P-3P	1	192747	6.7%	79354	5.8%	272101	6.4%
15	3P	1	224959	7.8%	76852	5.6%	301811	7.1%
16	4P	1	243307	8.4%	72183	5.2%	315490	7.4%
17	5P	1	229192	8.0%	67753	4.9%	296945	7.0%
18	6P	1	166929	5.8%	63426	4.6%	230355	5.4%
19	7P	1	123022	4.3%	59647	4.3%	182669	4.3%
20	8P	1	100012	3.5%	56198	4.1%	156210	3.7%
21	9P	1	83261	2.9%	53063	3.8%	136324	3.2%
22	10P-11P	1	61976	2.2%	48545	3.5%	110521	2.6%
23	11P-Mid	1	42118	1.5%	41963	3.0%	84081	2.0%
			2881341	100%	1378831	100%	4260172	100%



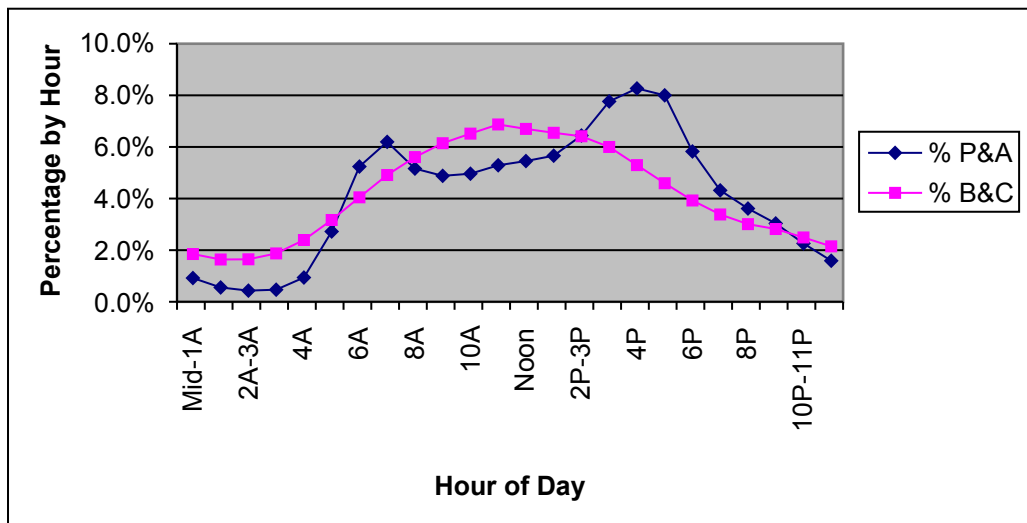
Hourly Percent by Vehicle Type

Rural Principal Arterial

Sample = 253 Counts

24 and 48 Hour Portable Counts Taken in 2006

Hour	Hour of Day	FC	P& A (Cars)	% P&A (Cars)	B&C (Trucks)	% B&C (Trucks)	Total	% Total
0	Mid-1A	2	39635	0.9%	18749	1.9%	58384	1.1%
1	1A-2A	2	23901	0.6%	16599	1.6%	40500	0.8%
2	2A-3A	2	18612	0.4%	16675	1.6%	35287	0.7%
3	3A	2	20172	0.5%	18979	1.9%	39151	0.7%
4	4A	2	40454	0.9%	24249	2.4%	64703	1.2%
5	5A	2	117265	2.7%	32104	3.2%	149369	2.8%
6	6A	2	225658	5.2%	40999	4.0%	266657	5.0%
7	7A	2	266850	6.2%	49755	4.9%	316605	6.0%
8	8A	2	222243	5.2%	56792	5.6%	279035	5.2%
9	9A	2	210183	4.9%	62242	6.1%	272425	5.1%
10	10A	2	213715	5.0%	66005	6.5%	279720	5.3%
11	11A-Noon	2	227795	5.3%	69601	6.9%	297396	5.6%
12	Noon	2	234863	5.5%	67855	6.7%	302718	5.7%
13	1P-2P	2	243784	5.7%	66331	6.5%	310115	5.8%
14	2P-3P	2	277495	6.4%	64961	6.4%	342456	6.4%
15	3P	2	334335	7.8%	60767	6.0%	395102	7.4%
16	4P	2	356039	8.3%	53645	5.3%	409684	7.7%
17	5P	2	344554	8.0%	46532	4.6%	391086	7.4%
18	6P	2	250856	5.8%	39764	3.9%	290620	5.5%
19	7P	2	185935	4.3%	34271	3.4%	220206	4.1%
20	8P	2	155609	3.6%	30477	3.0%	186086	3.5%
21	9P	2	130774	3.0%	28558	2.8%	159332	3.0%
22	10P-11P	2	97403	2.3%	25250	2.5%	122653	2.3%
23	11P-Mid	2	68465	1.6%	21755	2.1%	90220	1.7%
			4306595	100%	1012915	100%	5319510	100%



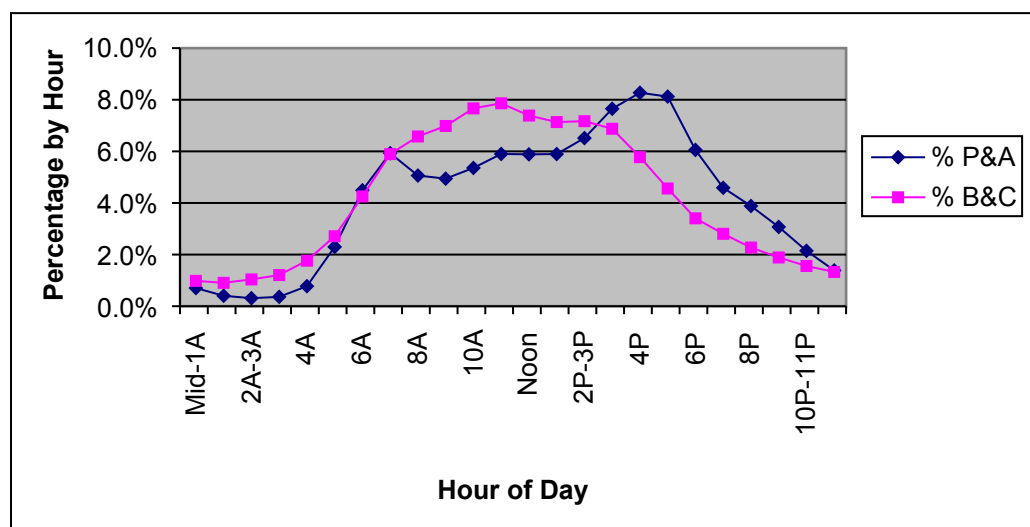
Hourly Percent by Vehicle Type

Rural Minor Arterial

Sample = 255 Counts

24 and 48 Hour Portable Counts Taken in 2006

Hour	Hour of Day	FC	P& A (Cars)	% P&A (Cars)	B&C (Trucks)	% B&C (Trucks)	Total	% Total
0	Mid-1A	6	14093	0.7%	1845	1.0%	15938	0.7%
1	1A-2A	6	8087	0.4%	1703	0.9%	9790	0.4%
2	2A-3A	6	6215	0.3%	1952	1.0%	8167	0.4%
3	3A	6	7247	0.4%	2268	1.2%	9515	0.4%
4	4A	6	15552	0.8%	3317	1.8%	18869	0.9%
5	5A	6	46082	2.3%	5098	2.7%	51180	2.3%
6	6A	6	90090	4.5%	7998	4.3%	98088	4.5%
7	7A	6	118882	5.9%	11084	5.9%	129966	5.9%
8	8A	6	101534	5.1%	12369	6.6%	113903	5.2%
9	9A	6	99121	4.9%	13133	7.0%	112254	5.1%
10	10A	6	107453	5.4%	14417	7.7%	121870	5.6%
11	11A-Noon	6	118312	5.9%	14786	7.9%	133098	6.1%
12	Noon	6	118016	5.9%	13892	7.4%	131908	6.0%
13	1P-2P	6	118233	5.9%	13418	7.1%	131651	6.0%
14	2P-3P	6	130636	6.5%	13483	7.2%	144119	6.6%
15	3P	6	153440	7.7%	12930	6.9%	166370	7.6%
16	4P	6	165877	8.3%	10863	5.8%	176740	8.1%
17	5P	6	162906	8.1%	8578	4.6%	171484	7.8%
18	6P	6	121444	6.1%	6402	3.4%	127846	5.8%
19	7P	6	92002	4.6%	5275	2.8%	97277	4.4%
20	8P	6	77877	3.9%	4273	2.3%	82150	3.7%
21	9P	6	61596	3.1%	3551	1.9%	65147	3.0%
22	10P-11P	6	43041	2.1%	2930	1.6%	45971	2.1%
23	11P-Mid	6	27818	1.4%	2497	1.3%	30315	1.4%
			2005554	100%	188062	100%	2193616	100%



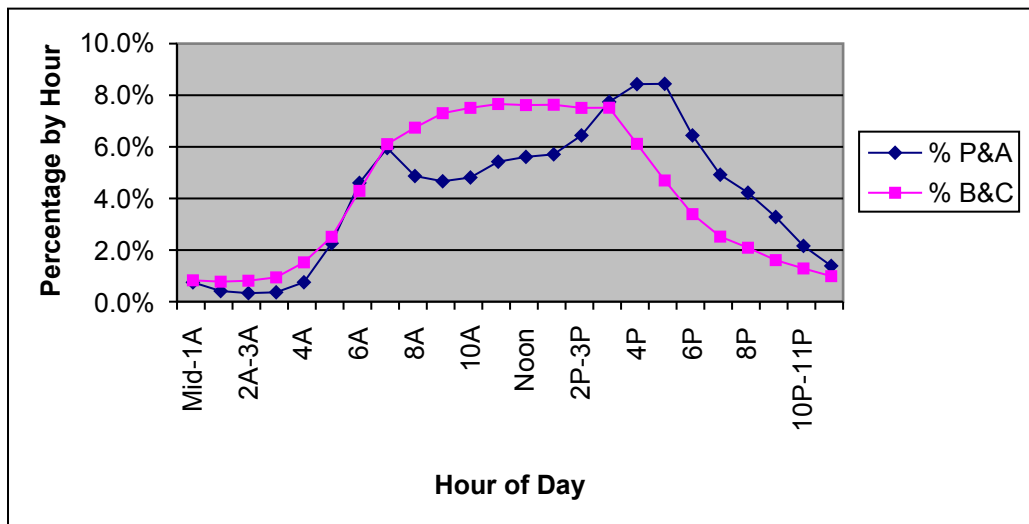
Hourly Percent by Vehicle Type

Rural Major Collector

Sample = 636 Counts

24 and 48 Hour Portable Counts Taken in 2006

Hour	Hour of Day	FC	P& A (Cars)	% P&A (Cars)	B&C (Trucks)	% B&C (Trucks)	Total	% Total
0	Mid-1A	7	22188	0.7%	1692	0.8%	23880	0.8%
1	1A-2A	7	12209	0.4%	1585	0.8%	13794	0.4%
2	2A-3A	7	9774	0.3%	1661	0.8%	11435	0.4%
3	3A	7	10763	0.4%	1924	0.9%	12687	0.4%
4	4A	7	22271	0.8%	3114	1.5%	25385	0.8%
5	5A	7	66986	2.3%	5139	2.5%	72125	2.3%
6	6A	7	136211	4.6%	8778	4.3%	144989	4.6%
7	7A	7	176235	6.0%	12476	6.1%	188711	6.0%
8	8A	7	144111	4.9%	13781	6.7%	157892	5.0%
9	9A	7	138101	4.7%	14926	7.3%	153027	4.8%
10	10A	7	142435	4.8%	15348	7.5%	157783	5.0%
11	11A-Noon	7	160549	5.4%	15651	7.7%	176200	5.6%
12	Noon	7	166079	5.6%	15568	7.6%	181647	5.7%
13	1P-2P	7	168977	5.7%	15593	7.6%	184570	5.8%
14	2P-3P	7	190721	6.4%	15346	7.5%	206067	6.5%
15	3P	7	229151	7.7%	15359	7.5%	244510	7.7%
16	4P	7	249482	8.4%	12500	6.1%	261982	8.3%
17	5P	7	249842	8.4%	9598	4.7%	259440	8.2%
18	6P	7	190694	6.4%	6933	3.4%	197627	6.2%
19	7P	7	145627	4.9%	5153	2.5%	150780	4.8%
20	8P	7	125026	4.2%	4274	2.1%	129300	4.1%
21	9P	7	97174	3.3%	3291	1.6%	100465	3.2%
22	10P-11P	7	63969	2.2%	2631	1.3%	66600	2.1%
23	11P-Mid	7	41042	1.4%	2020	1.0%	43062	1.4%
			2959617	100%	204341	100%	3163958	100%



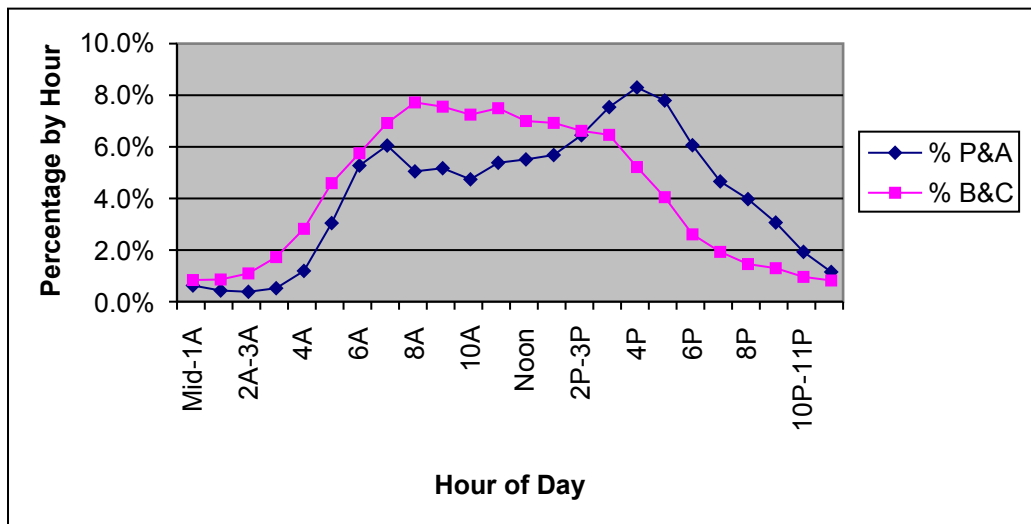
Hourly Percent by Vehicle Type

Rual Minor Collector

Sample = 51 Counts

24 and 48 Hour Portable Counts Taken in 2006

Hour	Hour of Day	FC	P& A (Cars)	% P&A (Cars)	B&C (Trucks)	% B&C (Trucks)	Total	% Total
0	Mid-1A	8	1448	0.6%	199	0.8%	1647	0.6%
1	1A-2A	8	1000	0.4%	204	0.9%	1204	0.5%
2	2A-3A	8	885	0.4%	260	1.1%	1145	0.4%
3	3A	8	1208	0.5%	410	1.7%	1618	0.6%
4	4A	8	2757	1.2%	670	2.8%	3427	1.3%
5	5A	8	7043	3.0%	1090	4.6%	8133	3.2%
6	6A	8	12198	5.3%	1365	5.8%	13563	5.3%
7	7A	8	13993	6.1%	1643	6.9%	15636	6.1%
8	8A	8	11677	5.0%	1832	7.7%	13509	5.3%
9	9A	8	11961	5.2%	1793	7.6%	13754	5.4%
10	10A	8	10965	4.7%	1720	7.2%	12685	5.0%
11	11A-Noon	8	12448	5.4%	1779	7.5%	14227	5.6%
12	Noon	8	12750	5.5%	1661	7.0%	14411	5.7%
13	1P-2P	8	13143	5.7%	1644	6.9%	14787	5.8%
14	2P-3P	8	14918	6.5%	1571	6.6%	16489	6.5%
15	3P	8	17437	7.5%	1534	6.5%	18971	7.4%
16	4P	8	19195	8.3%	1238	5.2%	20433	8.0%
17	5P	8	18027	7.8%	961	4.1%	18988	7.4%
18	6P	8	14022	6.1%	619	2.6%	14641	5.7%
19	7P	8	10776	4.7%	458	1.9%	11234	4.4%
20	8P	8	9193	4.0%	346	1.5%	9539	3.7%
21	9P	8	7093	3.1%	308	1.3%	7401	2.9%
22	10P-11P	8	4465	1.9%	228	1.0%	4693	1.8%
23	11P-Mid	8	2663	1.2%	195	0.8%	2858	1.1%
			231265	100%	23728	100%	254993	100%



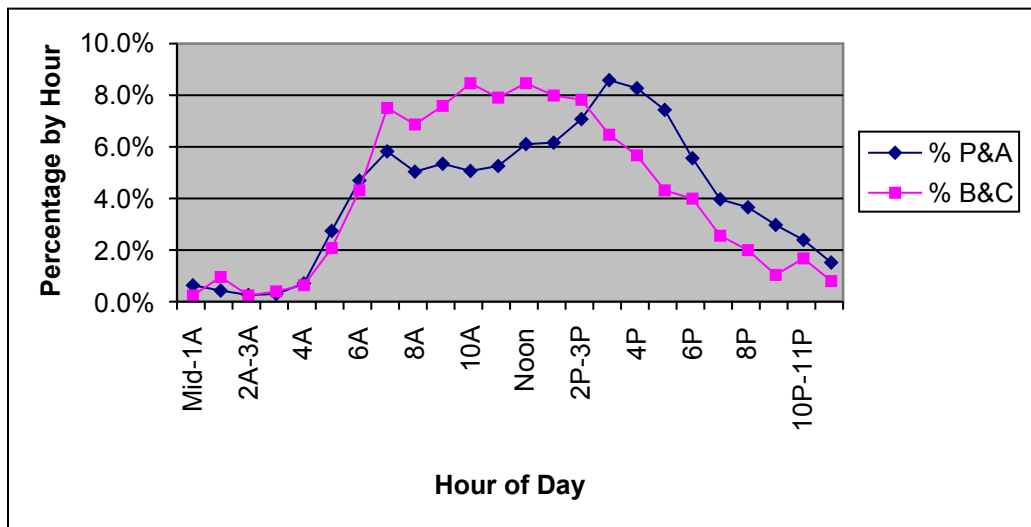
Hourly Percent by Vehicle Type

Rual Local

Sample = 5 Counts

24 and 48 Hour Portable Counts Taken in 2006

Hour	Hour of Day	FC	P& A (Cars)	% P&A (Cars)	B&C (Trucks)	% B&C (Trucks)	Total	% Total
0	Mid-1A	9	140	0.6%	3	0.2%	143	0.6%
1	1A-2A	9	95	0.4%	12	1.0%	107	0.5%
2	2A-3A	9	57	0.3%	3	0.2%	60	0.3%
3	3A	9	66	0.3%	5	0.4%	71	0.3%
4	4A	9	156	0.7%	8	0.6%	164	0.7%
5	5A	9	605	2.7%	26	2.1%	631	2.7%
6	6A	9	1036	4.7%	54	4.3%	1090	4.7%
7	7A	9	1285	5.8%	94	7.5%	1379	5.9%
8	8A	9	1112	5.0%	86	6.9%	1198	5.1%
9	9A	9	1179	5.3%	95	7.6%	1274	5.5%
10	10A	9	1118	5.1%	106	8.5%	1224	5.2%
11	11A-Noon	9	1160	5.3%	99	7.9%	1259	5.4%
12	Noon	9	1347	6.1%	106	8.5%	1453	6.2%
13	1P-2P	9	1360	6.2%	100	8.0%	1460	6.3%
14	2P-3P	9	1561	7.1%	98	7.8%	1659	7.1%
15	3P	9	1894	8.6%	81	6.5%	1975	8.5%
16	4P	9	1825	8.3%	71	5.7%	1896	8.1%
17	5P	9	1640	7.4%	54	4.3%	1694	7.3%
18	6P	9	1227	5.6%	50	4.0%	1277	5.5%
19	7P	9	875	4.0%	32	2.6%	907	3.9%
20	8P	9	807	3.7%	25	2.0%	832	3.6%
21	9P	9	656	3.0%	13	1.0%	669	2.9%
22	10P-11P	9	528	2.4%	21	1.7%	549	2.4%
23	11P-Mid	9	335	1.5%	10	0.8%	345	1.5%
			22064	100%	1252	100%	23316	100%



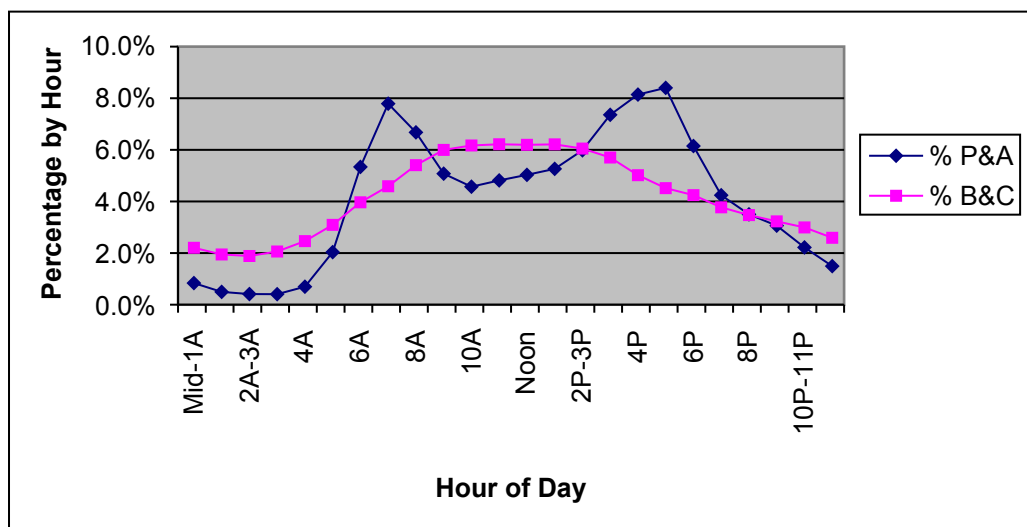
Hourly Percent by Vehicle Type

Urban Interstate

Sample= 41 Counts

Permanent ATR's and Portable Counts Taken in 2006

Hour	Hour of Day	FC	P& A (Cars)	% P&A (Cars)	B&C (Trucks)	% B&C (Trucks)	Total	% Total
0	Mid-1A	11	136605	0.8%	60174	2.2%	196779	1.0%
1	1A-2A	11	80933	0.5%	53106	1.9%	134039	0.7%
2	2A-3A	11	67185	0.4%	51497	1.9%	118682	0.6%
3	3A	11	66388	0.4%	56244	2.1%	122632	0.6%
4	4A	11	113716	0.7%	67229	2.5%	180945	0.9%
5	5A	11	332335	2.0%	84411	3.1%	416746	2.2%
6	6A	11	871199	5.3%	108270	4.0%	979469	5.1%
7	7A	11	1271008	7.8%	125254	4.6%	1396262	7.3%
8	8A	11	1089689	6.7%	147558	5.4%	1237247	6.5%
9	9A	11	828454	5.1%	163703	6.0%	992157	5.2%
10	10A	11	746043	4.6%	168382	6.2%	914425	4.8%
11	11A-Noon	11	785843	4.8%	169655	6.2%	955498	5.0%
12	Noon	11	821024	5.0%	169070	6.2%	990094	5.2%
13	1P-2P	11	858843	5.3%	169556	6.2%	1028399	5.4%
14	2P-3P	11	976159	6.0%	165095	6.0%	1141254	6.0%
15	3P	11	1200658	7.4%	155646	5.7%	1356304	7.1%
16	4P	11	1328646	8.1%	136948	5.0%	1465594	7.7%
17	5P	11	1371034	8.4%	123245	4.5%	1494279	7.8%
18	6P	11	1003305	6.1%	115852	4.2%	1119157	5.9%
19	7P	11	692259	4.2%	102966	3.8%	795225	4.2%
20	8P	11	571320	3.5%	94753	3.5%	666073	3.5%
21	9P	11	499732	3.1%	88114	3.2%	587846	3.1%
22	10P-11P	11	362146	2.2%	81711	3.0%	443857	2.3%
23	11P-Mid	11	243768	1.5%	70748	2.6%	314516	1.7%
			16318292	100%	2729187	100%	19047479	100%



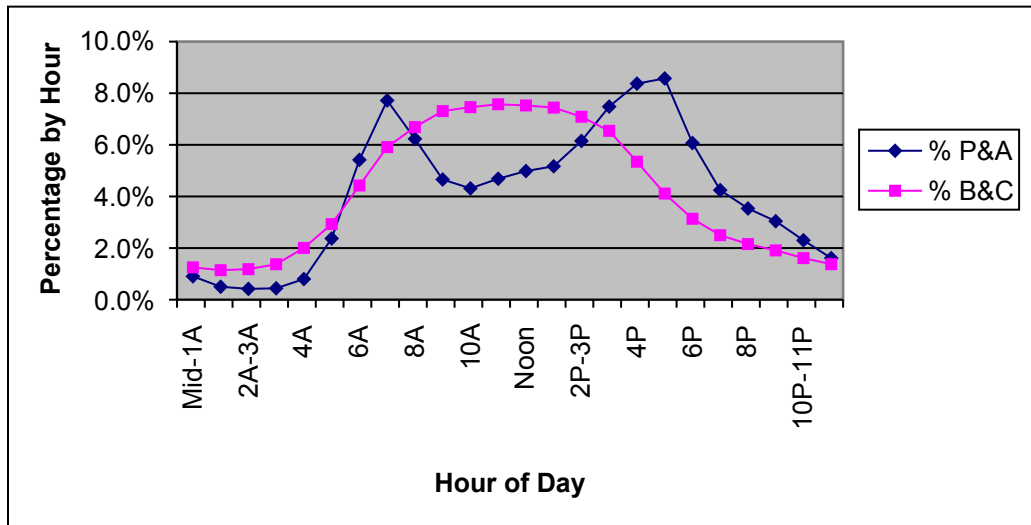
Hourly Percent by Vehicle Type

Urban Freeway and X-Way

Sample = 45 Counts

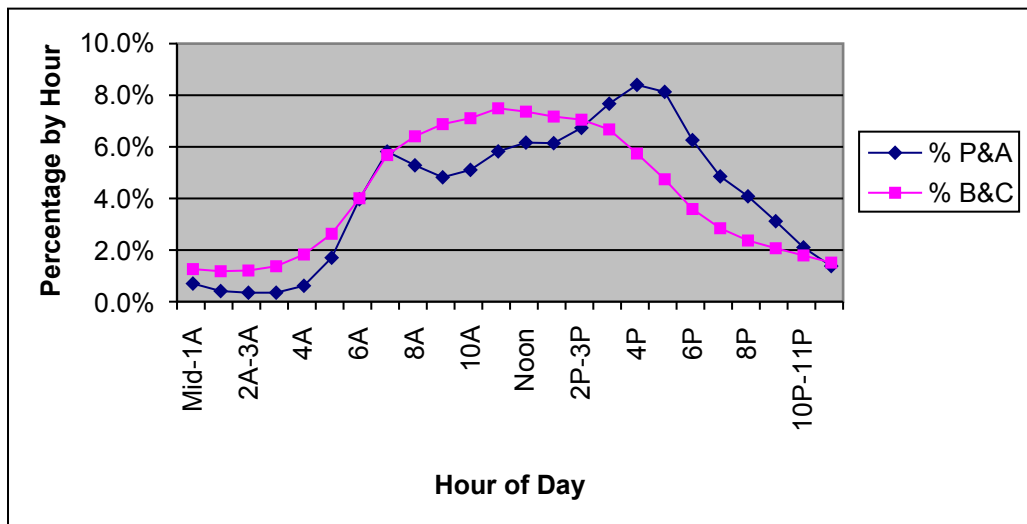
Permanent ATR's and Portable Counts Taken in 2006

Hour	Hour of Day	FC	P& A (Cars)	% P&A (Cars)	B&C (Trucks)	% B&C (Trucks)	Total	% Total
0	Mid-1A	12	37616	0.9%	3833	1.3%	41449	0.9%
1	1A-2A	12	20829	0.5%	3496	1.1%	24325	0.5%
2	2A-3A	12	17424	0.4%	3619	1.2%	21043	0.5%
3	3A	12	18355	0.4%	4201	1.4%	22556	0.5%
4	4A	12	33265	0.8%	6133	2.0%	39398	0.9%
5	5A	12	98637	2.4%	8965	2.9%	107602	2.4%
6	6A	12	225307	5.4%	13533	4.4%	238840	5.3%
7	7A	12	321102	7.7%	18088	5.9%	339190	7.6%
8	8A	12	259176	6.2%	20465	6.7%	279641	6.3%
9	9A	12	193686	4.7%	22358	7.3%	216044	4.8%
10	10A	12	179361	4.3%	22824	7.5%	202185	4.5%
11	11A-Noon	12	194907	4.7%	23164	7.6%	218071	4.9%
12	Noon	12	207323	5.0%	23025	7.5%	230348	5.2%
13	1P-2P	12	215001	5.2%	22769	7.4%	237770	5.3%
14	2P-3P	12	255822	6.2%	21685	7.1%	277507	6.2%
15	3P	12	311139	7.5%	20017	6.5%	331156	7.4%
16	4P	12	348188	8.4%	16356	5.3%	364544	8.2%
17	5P	12	356545	8.6%	12578	4.1%	369123	8.3%
18	6P	12	252484	6.1%	9592	3.1%	262076	5.9%
19	7P	12	176540	4.2%	7650	2.5%	184190	4.1%
20	8P	12	147034	3.5%	6593	2.2%	153627	3.4%
21	9P	12	126485	3.0%	5844	1.9%	132329	3.0%
22	10P-11P	12	95721	2.3%	4929	1.6%	100650	2.3%
23	11P-Mid	12	66986	1.6%	4205	1.4%	71191	1.6%
			4158933	100%	305922	100%	4464855	100%



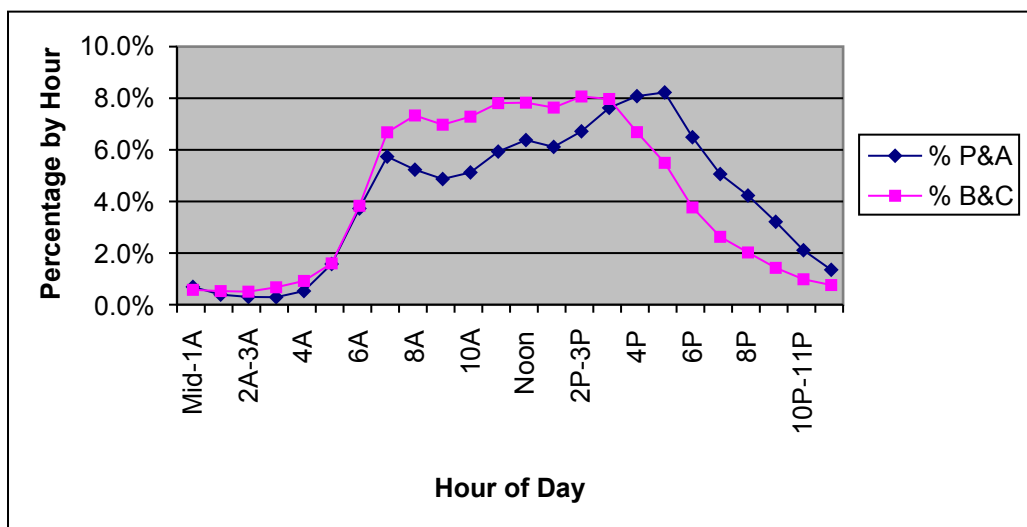
Hourly Percent by Vehicle Type
 Urban Principal Arterial
 Sample = 238 Counts
 24 and 48 Hour Portable Counts Taken in 2006

Hour	Hour of Day	FC	P& A (Cars)	% P&A (Cars)	B&C (Trucks)	% B&C (Trucks)	Total	% Total
0	Mid-1A	14	39734	0.7%	5120	1.3%	44854	0.7%
1	1A-2A	14	23310	0.4%	4785	1.2%	28095	0.5%
2	2A-3A	14	19662	0.3%	4899	1.2%	24561	0.4%
3	3A	14	19755	0.3%	5568	1.4%	25323	0.4%
4	4A	14	34911	0.6%	7414	1.8%	42325	0.7%
5	5A	14	96462	1.7%	10669	2.6%	107131	1.8%
6	6A	14	224684	4.0%	16249	4.0%	240933	4.0%
7	7A	14	329249	5.8%	23034	5.7%	352283	5.8%
8	8A	14	299083	5.3%	25987	6.4%	325070	5.4%
9	9A	14	272813	4.8%	27899	6.9%	300712	5.0%
10	10A	14	289039	5.1%	28826	7.1%	317865	5.2%
11	11A-Noon	14	329609	5.8%	30385	7.5%	359994	5.9%
12	Noon	14	348903	6.2%	29862	7.4%	378765	6.2%
13	1P-2P	14	347655	6.1%	29087	7.2%	376742	6.2%
14	2P-3P	14	381180	6.7%	28598	7.1%	409778	6.8%
15	3P	14	434207	7.7%	27066	6.7%	461273	7.6%
16	4P	14	475524	8.4%	23283	5.7%	498807	8.2%
17	5P	14	460142	8.1%	19234	4.7%	479376	7.9%
18	6P	14	354356	6.3%	14559	3.6%	368915	6.1%
19	7P	14	274763	4.9%	11538	2.8%	286301	4.7%
20	8P	14	231068	4.1%	9612	2.4%	240680	4.0%
21	9P	14	176498	3.1%	8396	2.1%	184894	3.0%
22	10P-11P	14	119041	2.1%	7266	1.8%	126307	2.1%
23	11P-Mid	14	78114	1.4%	6140	1.5%	84254	1.4%
			5659762	100%	405476	100%	6065238	100%



Hourly Percent by Vehicle Type
 Urban Minor Arterial
 Sample = 301 Counts
 24 and 48 Hour Portable Counts Taken in 2006

Hour	Hour of Day	FC	P& A (Cars)	% P&A (Cars)	B&C (Trucks)	% B&C (Trucks)	Total	% Total
0	Mid-1A	16	25730	0.7%	886	0.6%	26616	0.7%
1	1A-2A	16	14524	0.4%	811	0.5%	15335	0.4%
2	2A-3A	16	11182	0.3%	777	0.5%	11959	0.3%
3	3A	16	10819	0.3%	1037	0.7%	11856	0.3%
4	4A	16	19714	0.5%	1418	0.9%	21132	0.5%
5	5A	16	58803	1.6%	2464	1.6%	61267	1.6%
6	6A	16	139053	3.7%	5899	3.8%	144952	3.7%
7	7A	16	214022	5.7%	10284	6.7%	224306	5.8%
8	8A	16	195136	5.2%	11288	7.3%	206424	5.3%
9	9A	16	181633	4.9%	10737	7.0%	192370	5.0%
10	10A	16	191149	5.1%	11217	7.3%	202366	5.2%
11	11A-Noon	16	221301	5.9%	12023	7.8%	233324	6.0%
12	Noon	16	237976	6.4%	12052	7.8%	250028	6.4%
13	1P-2P	16	228052	6.1%	11758	7.6%	239810	6.2%
14	2P-3P	16	250579	6.7%	12420	8.1%	262999	6.8%
15	3P	16	284477	7.6%	12271	8.0%	296748	7.6%
16	4P	16	301432	8.1%	10293	6.7%	311725	8.0%
17	5P	16	306800	8.2%	8463	5.5%	315263	8.1%
18	6P	16	242067	6.5%	5802	3.8%	247869	6.4%
19	7P	16	188793	5.1%	4049	2.6%	192842	5.0%
20	8P	16	157825	4.2%	3115	2.0%	160940	4.1%
21	9P	16	119851	3.2%	2198	1.4%	122049	3.1%
22	10P-11P	16	78707	2.1%	1516	1.0%	80223	2.1%
23	11P-Mid	16	50400	1.4%	1171	0.8%	51571	1.3%
			3730025	100%	153949	100%	3883974	100%



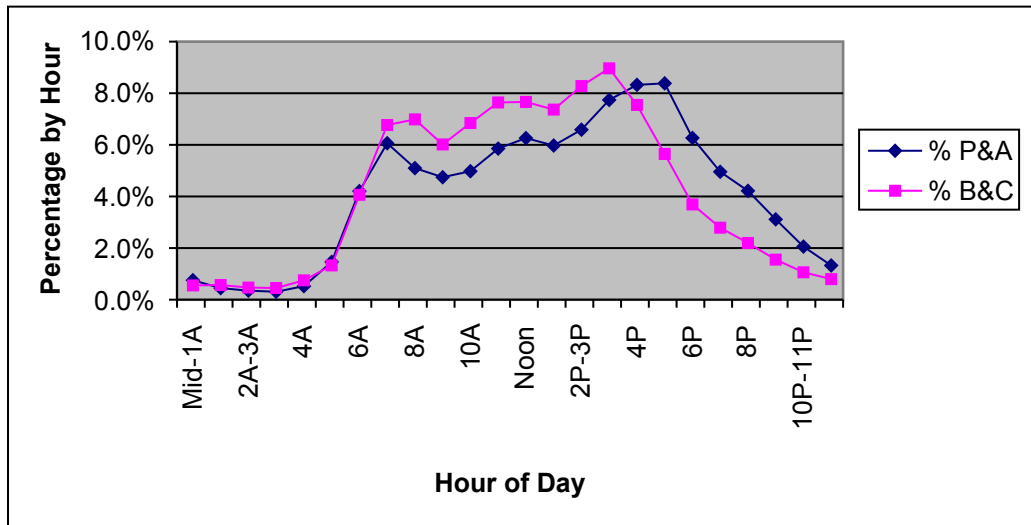
Hourly Percent by Vehicle Type

Urban Collector

Sample = 179 Counts

24 and 48 Hour Portable Counts Taken in 2006

Hour	Hour of Day	FC	P& A (Cars)	% P&A (Cars)	B&C (Trucks)	% B&C (Trucks)	Total	% Total
0	Mid-1A	17	9975	0.8%	264	0.6%	10239	0.7%
1	1A-2A	17	5927	0.4%	271	0.6%	6198	0.5%
2	2A-3A	17	4630	0.4%	224	0.5%	4854	0.4%
3	3A	17	4068	0.3%	216	0.5%	4284	0.3%
4	4A	17	6936	0.5%	358	0.7%	7294	0.5%
5	5A	17	19339	1.5%	634	1.3%	19973	1.5%
6	6A	17	55624	4.2%	1941	4.1%	57565	4.2%
7	7A	17	80163	6.1%	3232	6.8%	83395	6.1%
8	8A	17	67410	5.1%	3336	7.0%	70746	5.2%
9	9A	17	62745	4.7%	2872	6.0%	65617	4.8%
10	10A	17	65828	5.0%	3268	6.8%	69096	5.0%
11	11A-Noon	17	77416	5.9%	3649	7.6%	81065	5.9%
12	Noon	17	82810	6.3%	3659	7.7%	86469	6.3%
13	1P-2P	17	78983	6.0%	3517	7.4%	82500	6.0%
14	2P-3P	17	87104	6.6%	3952	8.3%	91056	6.6%
15	3P	17	102338	7.7%	4280	9.0%	106618	7.8%
16	4P	17	110072	8.3%	3603	7.5%	113675	8.3%
17	5P	17	110852	8.4%	2696	5.6%	113548	8.3%
18	6P	17	82869	6.3%	1762	3.7%	84631	6.2%
19	7P	17	65525	5.0%	1332	2.8%	66857	4.9%
20	8P	17	55770	4.2%	1049	2.2%	56819	4.1%
21	9P	17	41159	3.1%	741	1.6%	41900	3.1%
22	10P-11P	17	27206	2.1%	507	1.1%	27713	2.0%
23	11P-Mid	17	17543	1.3%	381	0.8%	17924	1.3%
			1322292	100%	47744	100%	1370036	100%



Hourly Percent by Vehicle Type

Urban Local

Sample = 5 Counts

24 and 48 Hour Portable Counts Taken in 2006

Hour	Hour of Day	FC	P& A (Cars)	% P&A (Cars)	B&C (Trucks)	% B&C (Trucks)	Total	% Total
0	Mid-1A	19	193	0.6%	3	0.3%	196	0.6%
1	1A-2A	19	105	0.3%	4	0.4%	109	0.3%
2	2A-3A	19	95	0.3%	4	0.4%	99	0.3%
3	3A	19	104	0.3%	8	0.8%	112	0.3%
4	4A	19	226	0.7%	13	1.4%	239	0.7%
5	5A	19	590	1.8%	15	1.6%	605	1.8%
6	6A	19	1322	4.1%	57	6.0%	1379	4.2%
7	7A	19	2003	6.2%	89	9.4%	2092	6.3%
8	8A	19	1564	4.9%	84	8.8%	1648	5.0%
9	9A	19	1401	4.4%	68	7.2%	1469	4.4%
10	10A	19	1561	4.9%	68	7.2%	1629	4.9%
11	11A-Noon	19	1767	5.5%	69	7.3%	1836	5.6%
12	Noon	19	1851	5.8%	54	5.7%	1905	5.8%
13	1P-2P	19	1759	5.5%	73	7.7%	1832	5.5%
14	2P-3P	19	2169	6.8%	84	8.8%	2253	6.8%
15	3P	19	2635	8.2%	73	7.7%	2708	8.2%
16	4P	19	2850	8.9%	59	6.2%	2909	8.8%
17	5P	19	2851	8.9%	39	4.1%	2890	8.7%
18	6P	19	2163	6.7%	31	3.3%	2194	6.6%
19	7P	19	1581	4.9%	23	2.4%	1604	4.9%
20	8P	19	1388	4.3%	13	1.4%	1401	4.2%
21	9P	19	979	3.0%	6	0.6%	985	3.0%
22	10P-11P	19	543	1.7%	8	0.8%	551	1.7%
23	11P-Mid	19	406	1.3%	6	0.6%	412	1.2%
			32106	100%	951	100%	33057	100%

