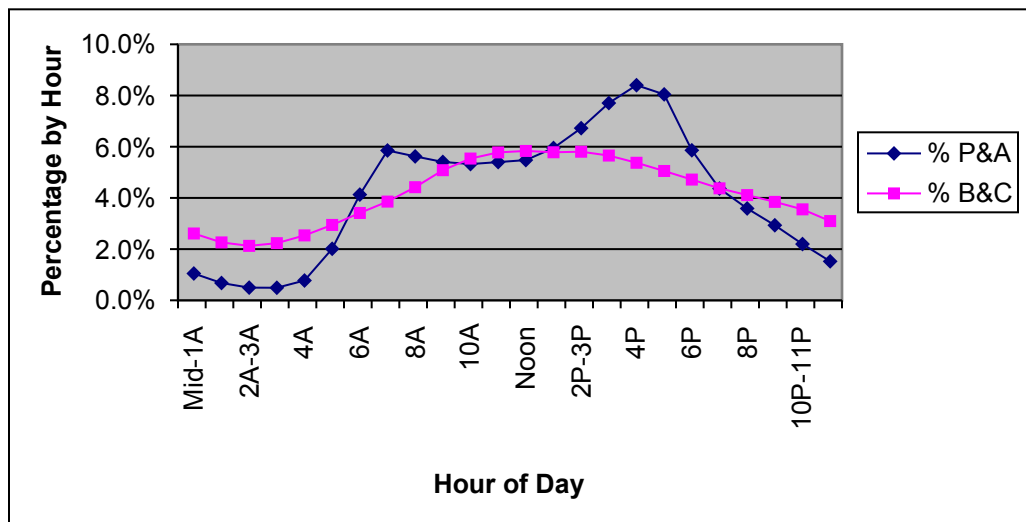


Hourly Percent by Vehicle Type Rural Interstate

Sample= 16 Counts

Sample of Permanent ATR's and Portable Counts Taken in 2007

Hour	Hour of Day	FC	P&A (Cars)	% P&A (Cars)	B&C (Trucks)	% B&C (Trucks)	Total	% Total
0	Mid-1A	1	27542	1.0%	36515	2.6%	64057	1.6%
1	1A-2A	1	17781	0.7%	31639	2.3%	49420	1.2%
2	2A-3A	1	13028	0.5%	29752	2.1%	42780	1.1%
3	3A	1	12904	0.5%	31223	2.2%	44127	1.1%
4	4A	1	20327	0.8%	35469	2.5%	55796	1.4%
5	5A	1	52913	2.0%	41186	2.9%	94099	2.3%
6	6A	1	108546	4.1%	47732	3.4%	156278	3.9%
7	7A	1	153858	5.9%	53939	3.9%	207797	5.2%
8	8A	1	147768	5.6%	61806	4.4%	209574	5.2%
9	9A	1	142085	5.4%	71097	5.1%	213182	5.3%
10	10A	1	139889	5.3%	77452	5.5%	217341	5.4%
11	11A-Noon	1	141928	5.4%	80813	5.8%	222741	5.5%
12	Noon	1	143974	5.5%	81615	5.8%	225589	5.6%
13	1P-2P	1	156402	6.0%	80892	5.8%	237294	5.9%
14	2P-3P	1	176757	6.7%	81195	5.8%	257952	6.4%
15	3P	1	202551	7.7%	79098	5.7%	281649	7.0%
16	4P	1	220895	8.4%	75153	5.4%	296048	7.4%
17	5P	1	211455	8.0%	70664	5.1%	282119	7.0%
18	6P	1	154041	5.9%	65970	4.7%	220011	5.5%
19	7P	1	114741	4.4%	61186	4.4%	175927	4.4%
20	8P	1	94314	3.6%	57499	4.1%	151813	3.8%
21	9P	1	77065	2.9%	53789	3.8%	130854	3.2%
22	10P-11P	1	57766	2.2%	49699	3.6%	107465	2.7%
23	11P-Mid	1	40027	1.5%	43297	3.1%	83324	2.1%
			2628557	100%	1398680	100%	4027237	100%



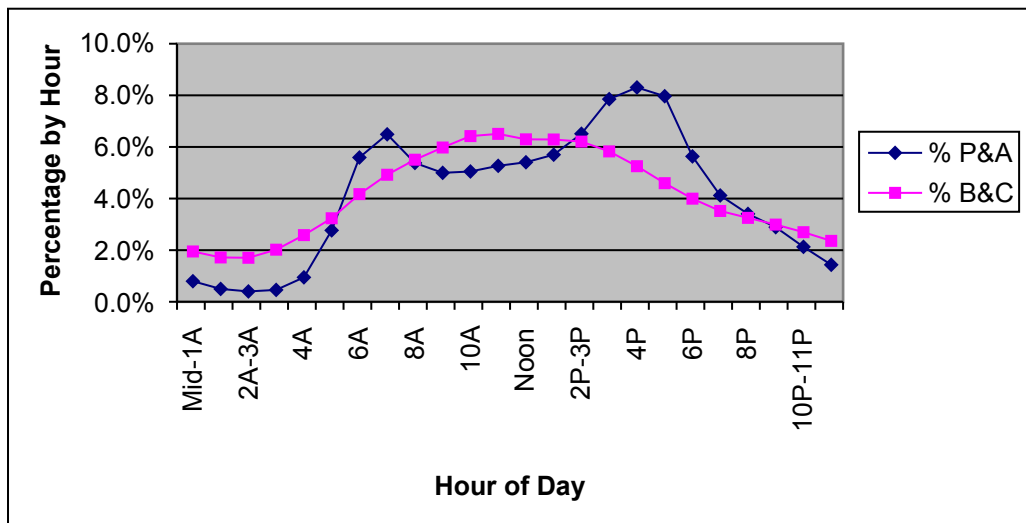
Hourly Percent by Vehicle Type

Rural Principal Arterial

Sample = 178 Counts

24 and 48 Hour Portable Counts Taken in 2007

Hour	Hour of Day	FC	P& A (Cars)	% P&A (Cars)	B&C (Trucks)	% B&C (Trucks)	Total	% Total
0	Mid-1A	2	25045	0.8%	16262	1.9%	41307	1.0%
1	1A-2A	2	15640	0.5%	14330	1.7%	29970	0.8%
2	2A-3A	2	12611	0.4%	14223	1.7%	26834	0.7%
3	3A	2	14465	0.5%	16841	2.0%	31306	0.8%
4	4A	2	29754	0.9%	21549	2.6%	51303	1.3%
5	5A	2	86985	2.8%	26989	3.2%	113974	2.9%
6	6A	2	175707	5.6%	34791	4.2%	210498	5.3%
7	7A	2	203936	6.5%	41059	4.9%	244995	6.2%
8	8A	2	169071	5.4%	45922	5.5%	214993	5.4%
9	9A	2	157026	5.0%	49860	6.0%	206886	5.2%
10	10A	2	158673	5.0%	53547	6.4%	212220	5.3%
11	11A-Noon	2	165571	5.3%	54267	6.5%	219838	5.5%
12	Noon	2	169904	5.4%	52501	6.3%	222405	5.6%
13	1P-2P	2	179122	5.7%	52452	6.3%	231574	5.8%
14	2P-3P	2	204616	6.5%	51762	6.2%	256378	6.4%
15	3P	2	246784	7.9%	48601	5.8%	295385	7.4%
16	4P	2	261019	8.3%	43816	5.3%	304835	7.7%
17	5P	2	250352	8.0%	38331	4.6%	288683	7.3%
18	6P	2	177039	5.6%	33327	4.0%	210366	5.3%
19	7P	2	129482	4.1%	29354	3.5%	158836	4.0%
20	8P	2	107060	3.4%	27120	3.3%	134180	3.4%
21	9P	2	90837	2.9%	24948	3.0%	115785	2.9%
22	10P-11P	2	66887	2.1%	22496	2.7%	89383	2.2%
23	11P-Mid	2	45046	1.4%	19685	2.4%	64731	1.6%
			3142632	100%	834033	100%	3976665	100%



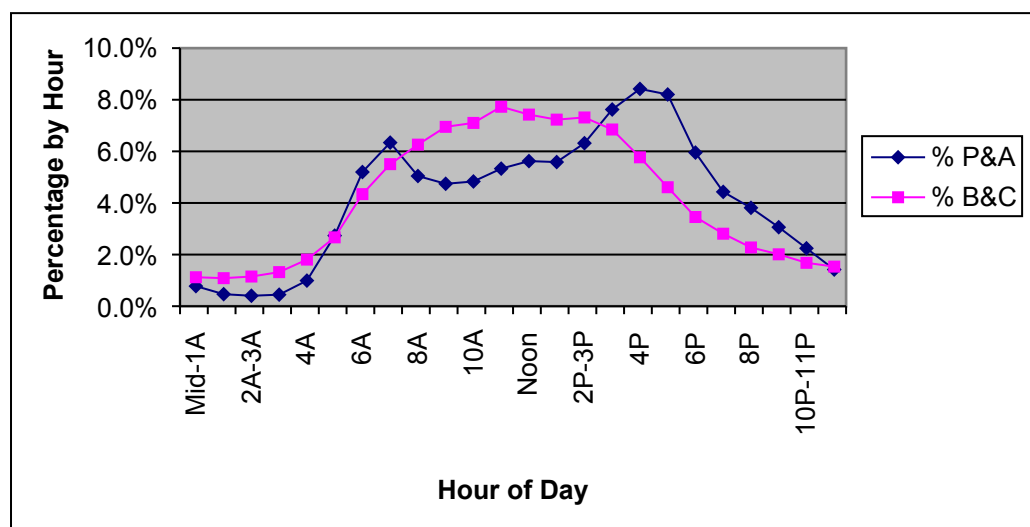
Hourly Percent by Vehicle Type

Rural Minor Arterial

Sample = 226 Counts

24 and 48 Hour Portable Counts Taken in 2007

Hour	Hour of Day	FC	P& A (Cars)	% P&A (Cars)	B&C (Trucks)	% B&C (Trucks)	Total	% Total
0	Mid-1A	6	12485	0.8%	2066	1.1%	14551	0.8%
1	1A-2A	6	7484	0.5%	2000	1.1%	9484	0.5%
2	2A-3A	6	6491	0.4%	2116	1.1%	8607	0.5%
3	3A	6	7174	0.4%	2431	1.3%	9605	0.5%
4	4A	6	15931	1.0%	3325	1.8%	19256	1.1%
5	5A	6	43922	2.7%	4912	2.7%	48834	2.7%
6	6A	6	83515	5.2%	7996	4.3%	91511	5.1%
7	7A	6	101826	6.3%	10135	5.5%	111961	6.3%
8	8A	6	81032	5.0%	11527	6.3%	92559	5.2%
9	9A	6	76193	4.7%	12797	7.0%	88990	5.0%
10	10A	6	77637	4.8%	13077	7.1%	90714	5.1%
11	11A-Noon	6	85629	5.3%	14231	7.7%	99860	5.6%
12	Noon	6	90324	5.6%	13671	7.4%	103995	5.8%
13	1P-2P	6	89721	5.6%	13312	7.2%	103033	5.8%
14	2P-3P	6	101472	6.3%	13466	7.3%	114938	6.4%
15	3P	6	122440	7.6%	12607	6.8%	135047	7.5%
16	4P	6	135251	8.4%	10624	5.8%	145875	8.1%
17	5P	6	131798	8.2%	8488	4.6%	140286	7.8%
18	6P	6	95617	6.0%	6363	3.5%	101980	5.7%
19	7P	6	71165	4.4%	5173	2.8%	76338	4.3%
20	8P	6	61248	3.8%	4190	2.3%	65438	3.7%
21	9P	6	49170	3.1%	3701	2.0%	52871	3.0%
22	10P-11P	6	36040	2.2%	3095	1.7%	39135	2.2%
23	11P-Mid	6	22806	1.4%	2823	1.5%	25629	1.4%
			1606371	100%	184126	100%	1790497	100%



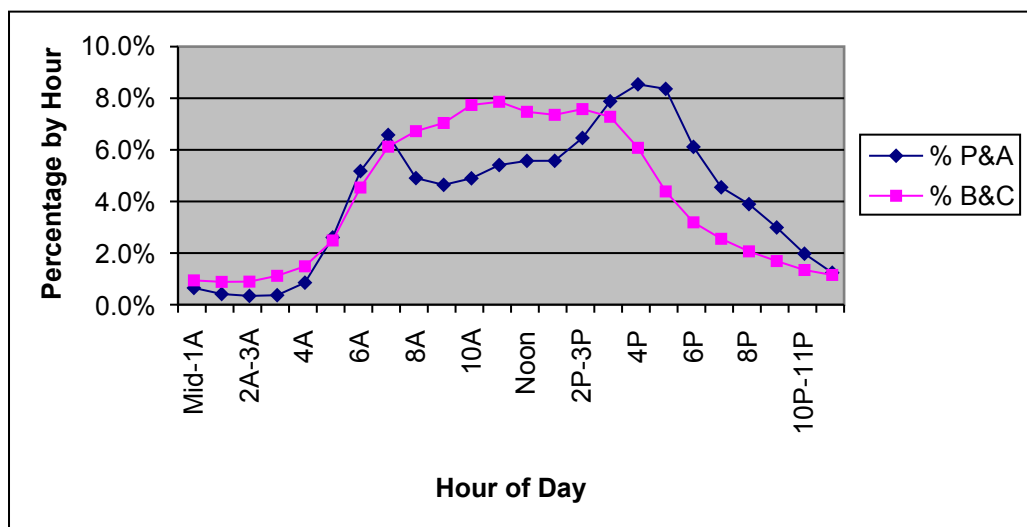
Hourly Percent by Vehicle Type

Rural Major Collector

Sample = 739 Counts

24 and 48 Hour Portable Counts Taken in 2007

Hour	Hour of Day	FC	P& A (Cars)	% P&A (Cars)	B&C (Trucks)	% B&C (Trucks)	Total	% Total
0	Mid-1A	7	17930	0.6%	2173	0.9%	20103	0.7%
1	1A-2A	7	11429	0.4%	2041	0.9%	13470	0.5%
2	2A-3A	7	9381	0.3%	2063	0.9%	11444	0.4%
3	3A	7	10148	0.4%	2582	1.1%	12730	0.4%
4	4A	7	23574	0.9%	3433	1.5%	27007	0.9%
5	5A	7	71932	2.6%	5743	2.5%	77675	2.6%
6	6A	7	142941	5.2%	10477	4.5%	153418	5.1%
7	7A	7	181633	6.6%	14130	6.1%	195763	6.5%
8	8A	7	135442	4.9%	15518	6.7%	150960	5.0%
9	9A	7	128222	4.6%	16250	7.0%	144472	4.8%
10	10A	7	135220	4.9%	17860	7.7%	153080	5.1%
11	11A-Noon	7	149421	5.4%	18146	7.9%	167567	5.6%
12	Noon	7	153901	5.6%	17250	7.5%	171151	5.7%
13	1P-2P	7	153974	5.6%	16979	7.4%	170953	5.7%
14	2P-3P	7	178441	6.5%	17491	7.6%	195932	6.5%
15	3P	7	217638	7.9%	16805	7.3%	234443	7.8%
16	4P	7	235779	8.5%	14029	6.1%	249808	8.3%
17	5P	7	230929	8.4%	10128	4.4%	241057	8.1%
18	6P	7	168858	6.1%	7364	3.2%	176222	5.9%
19	7P	7	125616	4.5%	5893	2.6%	131509	4.4%
20	8P	7	107596	3.9%	4769	2.1%	112365	3.8%
21	9P	7	82635	3.0%	3901	1.7%	86536	2.9%
22	10P-11P	7	54555	2.0%	3101	1.3%	57656	1.9%
23	11P-Mid	7	34193	1.2%	2659	1.2%	36852	1.2%
			2761388	100%	230785	100%	2992173	100%



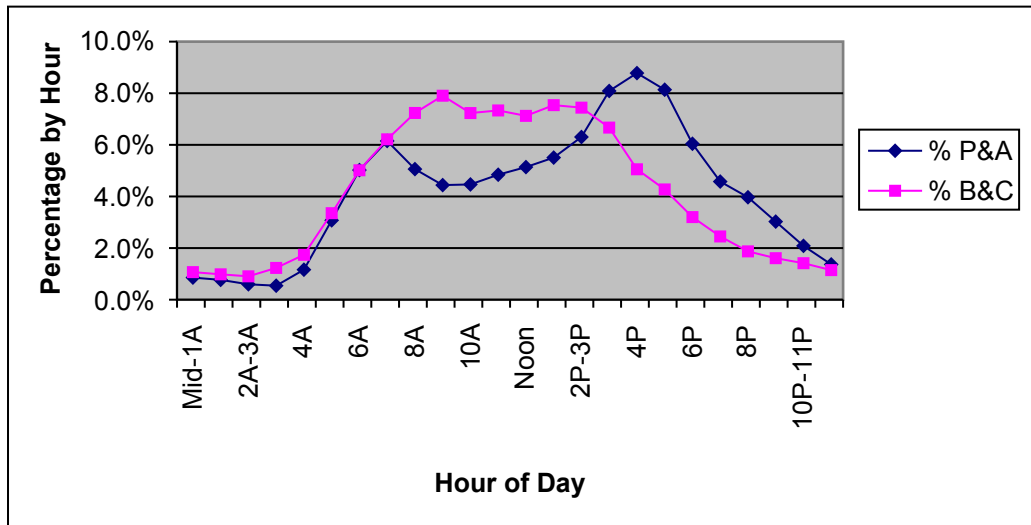
Hourly Percent by Vehicle Type

Rual Minor Collector

Sample = 89 Counts

24 and 48 Hour Portable Counts Taken in 2007

Hour	Hour of Day	FC	P& A (Cars)	% P&A (Cars)	B&C (Trucks)	% B&C (Trucks)	Total	% Total
0	Mid-1A	8	1634	0.9%	275	1.1%	1909	0.9%
1	1A-2A	8	1466	0.8%	253	1.0%	1719	0.8%
2	2A-3A	8	1139	0.6%	233	0.9%	1372	0.6%
3	3A	8	1034	0.5%	317	1.2%	1351	0.6%
4	4A	8	2218	1.2%	448	1.7%	2666	1.2%
5	5A	8	5870	3.1%	863	3.4%	6733	3.1%
6	6A	8	9588	5.0%	1291	5.0%	10879	5.0%
7	7A	8	11740	6.2%	1600	6.2%	13340	6.2%
8	8A	8	9659	5.1%	1863	7.2%	11522	5.3%
9	9A	8	8476	4.4%	2035	7.9%	10511	4.9%
10	10A	8	8525	4.5%	1862	7.2%	10387	4.8%
11	11A-Noon	8	9245	4.8%	1888	7.3%	11133	5.1%
12	Noon	8	9808	5.1%	1834	7.1%	11642	5.4%
13	1P-2P	8	10510	5.5%	1941	7.5%	12451	5.7%
14	2P-3P	8	12034	6.3%	1916	7.4%	13950	6.4%
15	3P	8	15438	8.1%	1717	6.7%	17155	7.9%
16	4P	8	16761	8.8%	1301	5.1%	18062	8.3%
17	5P	8	15532	8.1%	1100	4.3%	16632	7.7%
18	6P	8	11533	6.0%	824	3.2%	12357	5.7%
19	7P	8	8738	4.6%	631	2.5%	9369	4.3%
20	8P	8	7576	4.0%	482	1.9%	8058	3.7%
21	9P	8	5776	3.0%	414	1.6%	6190	2.9%
22	10P-11P	8	3982	2.1%	364	1.4%	4346	2.0%
23	11P-Mid	8	2609	1.4%	295	1.1%	2904	1.3%
			190891	100%	25747	100%	216638	100%



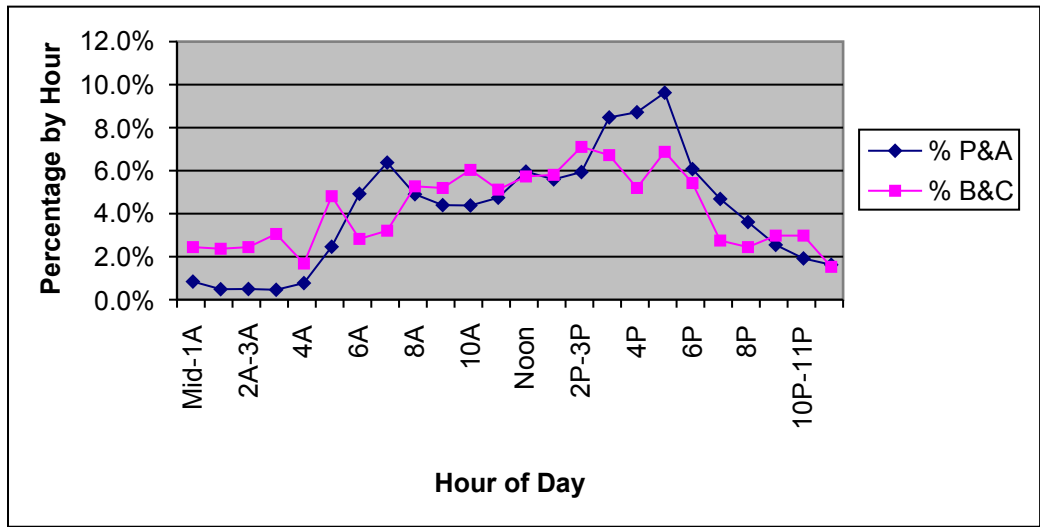
Hourly Percent by Vehicle Type

Rual Local

Sample = 4 Counts

24 and 48 Hour Portable Counts Taken in 2007

Hour	Hour of Day	FC	P& A (Cars)	% P&A (Cars)	B&C (Trucks)	% B&C (Trucks)	Total	% Total
0	Mid-1A	9	254	0.8%	32	2.4%	286	0.9%
1	1A-2A	9	147	0.5%	31	2.4%	178	0.6%
2	2A-3A	9	150	0.5%	32	2.4%	182	0.6%
3	3A	9	139	0.5%	40	3.1%	179	0.6%
4	4A	9	233	0.8%	22	1.7%	255	0.8%
5	5A	9	743	2.5%	63	4.8%	806	2.6%
6	6A	9	1486	4.9%	37	2.8%	1523	4.8%
7	7A	9	1924	6.4%	42	3.2%	1966	6.2%
8	8A	9	1480	4.9%	69	5.3%	1549	4.9%
9	9A	9	1327	4.4%	68	5.2%	1395	4.4%
10	10A	9	1322	4.4%	79	6.0%	1401	4.4%
11	11A-Noon	9	1431	4.7%	67	5.1%	1498	4.8%
12	Noon	9	1798	6.0%	75	5.7%	1873	5.9%
13	1P-2P	9	1688	5.6%	76	5.8%	1764	5.6%
14	2P-3P	9	1791	5.9%	93	7.1%	1884	6.0%
15	3P	9	2558	8.5%	88	6.7%	2646	8.4%
16	4P	9	2631	8.7%	68	5.2%	2699	8.6%
17	5P	9	2905	9.6%	90	6.9%	2995	9.5%
18	6P	9	1833	6.1%	71	5.4%	1904	6.0%
19	7P	9	1414	4.7%	36	2.8%	1450	4.6%
20	8P	9	1090	3.6%	32	2.4%	1122	3.6%
21	9P	9	769	2.5%	39	3.0%	808	2.6%
22	10P-11P	9	579	1.9%	39	3.0%	618	2.0%
23	11P-Mid	9	490	1.6%	20	1.5%	510	1.6%
			30182	100%	1309	100%	31491	100%



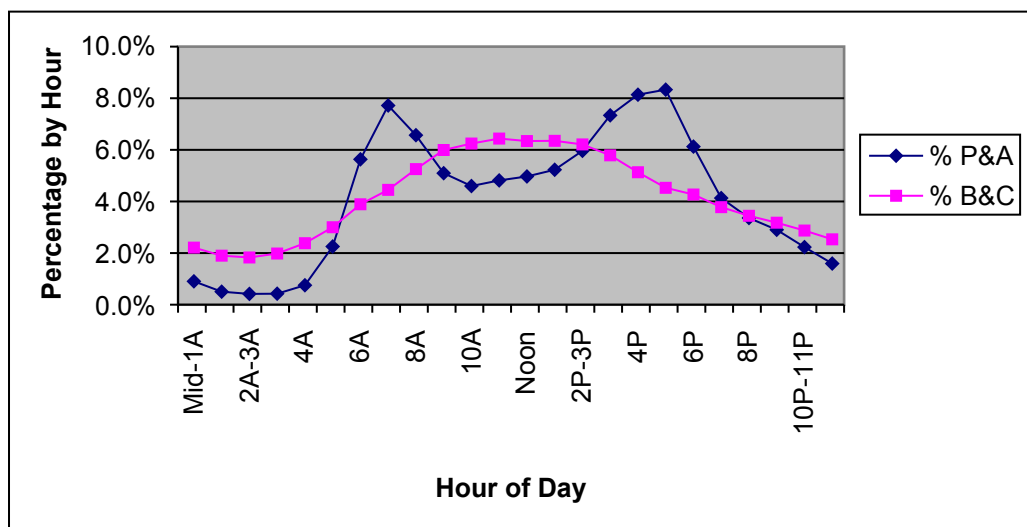
Hourly Percent by Vehicle Type

Urban Interstate

Sample= 49 Counts

Permanent ATR's and Portable Counts Taken in 2007

Hour	Hour of Day	FC	P& A (Cars)	% P&A (Cars)	B&C (Trucks)	% B&C (Trucks)	Total	% Total
0	Mid-1A	11	158497	0.9%	67259	2.2%	225756	1.1%
1	1A-2A	11	88276	0.5%	57776	1.9%	146052	0.7%
2	2A-3A	11	73161	0.4%	55649	1.8%	128810	0.6%
3	3A	11	74579	0.4%	60296	2.0%	134875	0.7%
4	4A	11	131952	0.8%	72463	2.4%	204415	1.0%
5	5A	11	394963	2.3%	91278	3.0%	486241	2.4%
6	6A	11	986814	5.6%	118334	3.9%	1105148	5.4%
7	7A	11	1352120	7.7%	135335	4.4%	1487455	7.2%
8	8A	11	1150606	6.6%	159788	5.3%	1310394	6.4%
9	9A	11	892621	5.1%	182317	6.0%	1074938	5.2%
10	10A	11	805491	4.6%	189921	6.2%	995412	4.8%
11	11A-Noon	11	843608	4.8%	195778	6.4%	1039386	5.1%
12	Noon	11	870465	5.0%	192857	6.3%	1063322	5.2%
13	1P-2P	11	915960	5.2%	193128	6.3%	1109088	5.4%
14	2P-3P	11	1044493	6.0%	188882	6.2%	1233375	6.0%
15	3P	11	1285344	7.3%	176034	5.8%	1461378	7.1%
16	4P	11	1425547	8.1%	156091	5.1%	1581638	7.7%
17	5P	11	1459806	8.3%	137750	4.5%	1597556	7.8%
18	6P	11	1073180	6.1%	129839	4.3%	1203019	5.9%
19	7P	11	723734	4.1%	114939	3.8%	838673	4.1%
20	8P	11	588583	3.4%	104765	3.4%	693348	3.4%
21	9P	11	508370	2.9%	96632	3.2%	605002	2.9%
22	10P-11P	11	390791	2.2%	87388	2.9%	478179	2.3%
23	11P-Mid	11	279191	1.6%	77030	2.5%	356221	1.7%
			17518152	100%	3041529	100%	20559681	100%



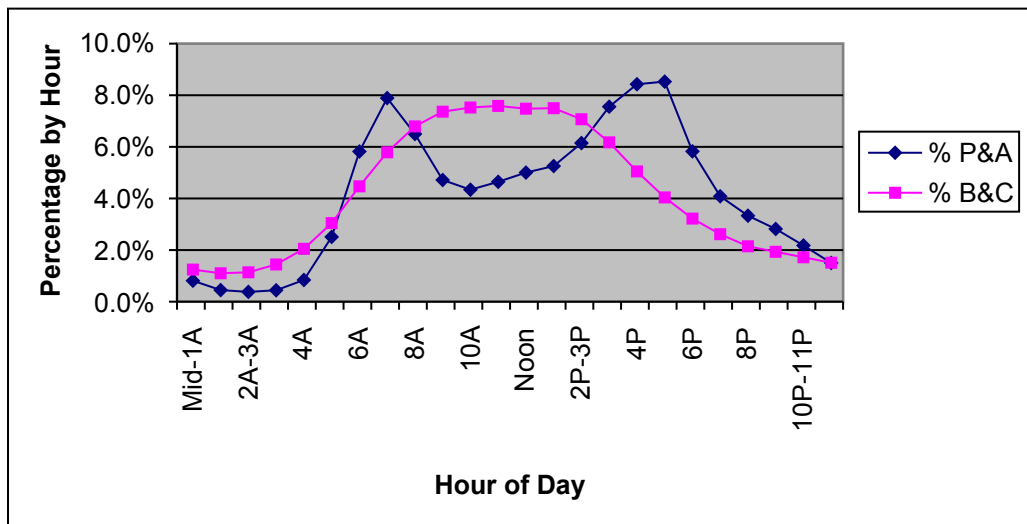
Hourly Percent by Vehicle Type

Urban Freeway and X-Way

Sample = 72 Counts

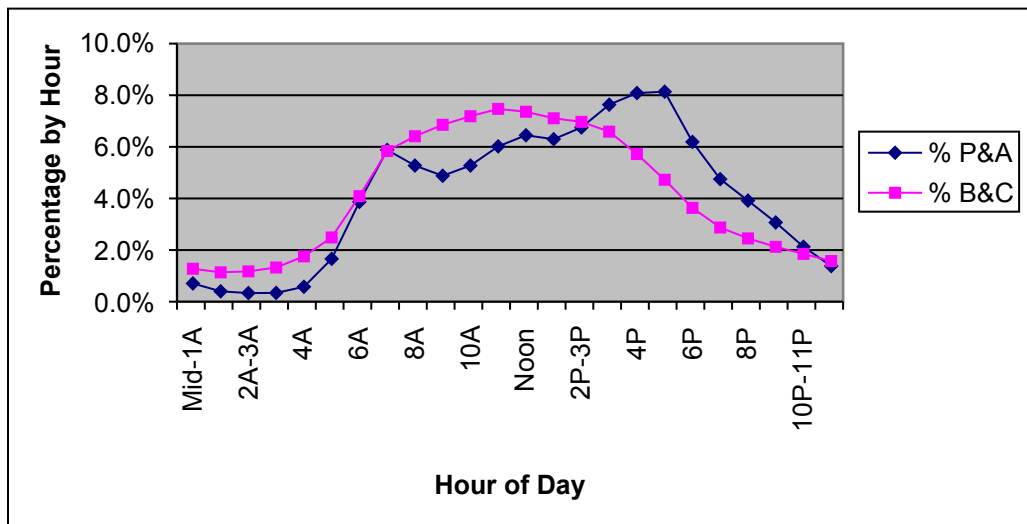
Permanent ATR's and Portable Counts Taken in 2007

Hour	Hour of Day	FC	P& A (Cars)	% P&A (Cars)	B&C (Trucks)	% B&C (Trucks)	Total	% Total
0	Mid-1A	12	42234	0.8%	5943	1.2%	48177	0.8%
1	1A-2A	12	23353	0.4%	5260	1.1%	28613	0.5%
2	2A-3A	12	19732	0.4%	5444	1.1%	25176	0.4%
3	3A	12	23015	0.4%	6893	1.4%	29908	0.5%
4	4A	12	43706	0.8%	9793	2.0%	53499	0.9%
5	5A	12	130411	2.5%	14553	3.0%	144964	2.6%
6	6A	12	302414	5.8%	21360	4.5%	323774	5.7%
7	7A	12	409951	7.9%	27661	5.8%	437612	7.7%
8	8A	12	337609	6.5%	32463	6.8%	370072	6.5%
9	9A	12	245034	4.7%	35185	7.4%	280219	4.9%
10	10A	12	225474	4.3%	35959	7.5%	261433	4.6%
11	11A-Noon	12	241345	4.6%	36252	7.6%	277597	4.9%
12	Noon	12	259956	5.0%	35741	7.5%	295697	5.2%
13	1P-2P	12	273100	5.3%	35834	7.5%	308934	5.4%
14	2P-3P	12	319348	6.1%	33785	7.1%	353133	6.2%
15	3P	12	392602	7.6%	29506	6.2%	422108	7.4%
16	4P	12	437847	8.4%	24123	5.0%	461970	8.1%
17	5P	12	443070	8.5%	19310	4.0%	462380	8.1%
18	6P	12	302675	5.8%	15386	3.2%	318061	5.6%
19	7P	12	212215	4.1%	12500	2.6%	224715	4.0%
20	8P	12	173151	3.3%	10257	2.1%	183408	3.2%
21	9P	12	146438	2.8%	9236	1.9%	155674	2.7%
22	10P-11P	12	113180	2.2%	8224	1.7%	121404	2.1%
23	11P-Mid	12	77985	1.5%	7216	1.5%	85201	1.5%
			5195845	100%	477884	100%	5673729	100%



Hourly Percent by Vehicle Type
 Urban Principal Arterial
 Sample = 221 Counts
 24 and 48 Hour Portable Counts Taken in 2007

Hour	Hour of Day	FC	P& A (Cars)	% P&A (Cars)	B&C (Trucks)	% B&C (Trucks)	Total	% Total
0	Mid-1A	14	36578	0.7%	4771	1.3%	41349	0.7%
1	1A-2A	14	20741	0.4%	4250	1.1%	24991	0.5%
2	2A-3A	14	17235	0.3%	4390	1.2%	21625	0.4%
3	3A	14	17601	0.3%	4952	1.3%	22553	0.4%
4	4A	14	29847	0.6%	6562	1.8%	36409	0.7%
5	5A	14	85792	1.7%	9306	2.5%	95098	1.7%
6	6A	14	200064	3.9%	15292	4.1%	215356	3.9%
7	7A	14	304159	5.9%	21823	5.8%	325982	5.9%
8	8A	14	272810	5.3%	23964	6.4%	296774	5.4%
9	9A	14	252348	4.9%	25618	6.9%	277966	5.0%
10	10A	14	272875	5.3%	26862	7.2%	299737	5.4%
11	11A-Noon	14	311277	6.0%	27921	7.5%	339198	6.1%
12	Noon	14	333525	6.4%	27509	7.4%	361034	6.5%
13	1P-2P	14	325706	6.3%	26562	7.1%	352268	6.4%
14	2P-3P	14	349161	6.8%	26044	7.0%	375205	6.8%
15	3P	14	394863	7.6%	24633	6.6%	419496	7.6%
16	4P	14	418163	8.1%	21380	5.7%	439543	7.9%
17	5P	14	420851	8.1%	17660	4.7%	438511	7.9%
18	6P	14	320203	6.2%	13585	3.6%	333788	6.0%
19	7P	14	245584	4.7%	10743	2.9%	256327	4.6%
20	8P	14	202603	3.9%	9169	2.5%	211772	3.8%
21	9P	14	158797	3.1%	7946	2.1%	166743	3.0%
22	10P-11P	14	110086	2.1%	6924	1.9%	117010	2.1%
23	11P-Mid	14	71344	1.4%	5892	1.6%	77236	1.4%
			5172213	100%	373758	100%	5545971	100%



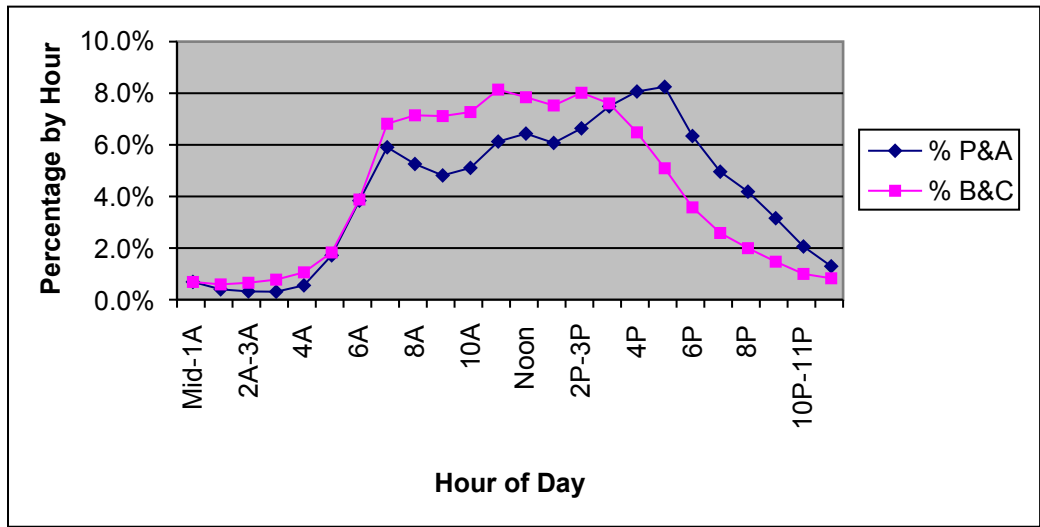
Hourly Percent by Vehicle Type

Urban Minor Arterial

Sample = 308 Counts

24 and 48 Hour Portable Counts Taken in 2007

Hour	Hour of Day	FC	P& A (Cars)	% P&A (Cars)	B&C (Trucks)	% B&C (Trucks)	Total	% Total
0	Mid-1A	16	22623	0.7%	931	0.7%	23554	0.7%
1	1A-2A	16	13165	0.4%	802	0.6%	13967	0.4%
2	2A-3A	16	10511	0.3%	889	0.7%	11400	0.3%
3	3A	16	10129	0.3%	1053	0.8%	11182	0.3%
4	4A	16	18203	0.6%	1435	1.1%	19638	0.6%
5	5A	16	56447	1.7%	2478	1.8%	58925	1.7%
6	6A	16	126070	3.8%	5258	3.9%	131328	3.8%
7	7A	16	193978	5.9%	9237	6.8%	203215	5.9%
8	8A	16	172722	5.3%	9679	7.1%	182401	5.3%
9	9A	16	158156	4.8%	9639	7.1%	167795	4.9%
10	10A	16	167770	5.1%	9850	7.3%	177620	5.2%
11	11A-Noon	16	201263	6.1%	11029	8.1%	212292	6.2%
12	Noon	16	211425	6.4%	10628	7.8%	222053	6.5%
13	1P-2P	16	199504	6.1%	10196	7.5%	209700	6.1%
14	2P-3P	16	218078	6.6%	10864	8.0%	228942	6.7%
15	3P	16	246073	7.5%	10303	7.6%	256376	7.5%
16	4P	16	264984	8.1%	8785	6.5%	273769	8.0%
17	5P	16	270976	8.2%	6899	5.1%	277875	8.1%
18	6P	16	208315	6.3%	4846	3.6%	213161	6.2%
19	7P	16	162918	5.0%	3502	2.6%	166420	4.9%
20	8P	16	137515	4.2%	2704	2.0%	140219	4.1%
21	9P	16	103710	3.2%	1995	1.5%	105705	3.1%
22	10P-11P	16	67703	2.1%	1353	1.0%	69056	2.0%
23	11P-Mid	16	42523	1.3%	1123	0.8%	43646	1.3%
			3284761	100%	135478	100%	3420239	100%



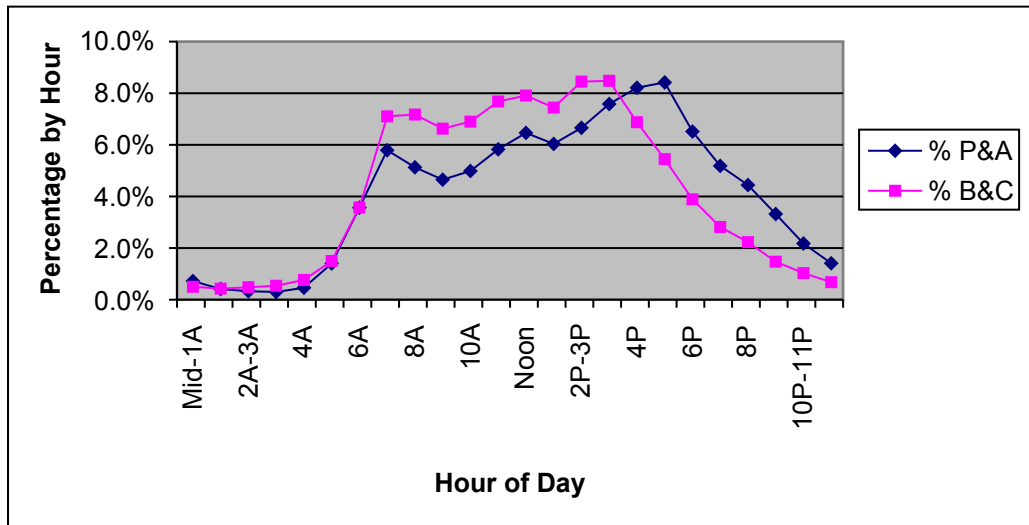
Hourly Percent by Vehicle Type

Urban Collector

Sample = 173 Counts

24 and 48 Hour Portable Counts Taken in 2007

Hour	Hour of Day	FC	P& A (Cars)	% P&A (Cars)	B&C (Trucks)	% B&C (Trucks)	Total	% Total
0	Mid-1A	17	9579	0.7%	222	0.5%	9801	0.7%
1	1A-2A	17	5492	0.4%	191	0.4%	5683	0.4%
2	2A-3A	17	4341	0.3%	214	0.5%	4555	0.3%
3	3A	17	3975	0.3%	240	0.5%	4215	0.3%
4	4A	17	6140	0.5%	340	0.8%	6480	0.5%
5	5A	17	18641	1.4%	666	1.5%	19307	1.4%
6	6A	17	47359	3.6%	1587	3.6%	48946	3.6%
7	7A	17	76928	5.8%	3157	7.1%	80085	5.8%
8	8A	17	68134	5.1%	3188	7.2%	71322	5.2%
9	9A	17	61769	4.6%	2946	6.6%	64715	4.7%
10	10A	17	66255	5.0%	3066	6.9%	69321	5.0%
11	11A-Noon	17	77388	5.8%	3413	7.7%	80801	5.9%
12	Noon	17	85856	6.5%	3515	7.9%	89371	6.5%
13	1P-2P	17	80186	6.0%	3308	7.4%	83494	6.1%
14	2P-3P	17	88461	6.7%	3755	8.4%	92216	6.7%
15	3P	17	100720	7.6%	3769	8.5%	104489	7.6%
16	4P	17	109113	8.2%	3056	6.9%	112169	8.2%
17	5P	17	111831	8.4%	2420	5.4%	114251	8.3%
18	6P	17	86577	6.5%	1729	3.9%	88306	6.4%
19	7P	17	68886	5.2%	1252	2.8%	70138	5.1%
20	8P	17	59011	4.4%	991	2.2%	60002	4.4%
21	9P	17	44094	3.3%	654	1.5%	44748	3.3%
22	10P-11P	17	28920	2.2%	458	1.0%	29378	2.1%
23	11P-Mid	17	18741	1.4%	301	0.7%	19042	1.4%
			1328397	100%	44438	100%	1372835	100%



Hourly Percent by Vehicle Type

Urban Local

Sample = 4 Counts

24 and 48 Hour Portable Counts Taken in 2007

Hour	Hour of Day	FC	P& A (Cars)	% P&A (Cars)	B&C (Trucks)	% B&C (Trucks)	Total	% Total
0	Mid-1A	19	153	0.6%	10	0.4%	163	0.5%
1	1A-2A	19	124	0.5%	9	0.4%	133	0.4%
2	2A-3A	19	132	0.5%	6	0.2%	138	0.5%
3	3A	19	91	0.3%	8	0.3%	99	0.3%
4	4A	19	119	0.4%	21	0.9%	140	0.5%
5	5A	19	277	1.0%	45	1.8%	322	1.1%
6	6A	19	1017	3.7%	145	5.9%	1162	3.9%
7	7A	19	1837	6.7%	191	7.7%	2028	6.8%
8	8A	19	1491	5.5%	194	7.9%	1685	5.7%
9	9A	19	1164	4.3%	223	9.0%	1387	4.7%
10	10A	19	1250	4.6%	200	8.1%	1450	4.9%
11	11A-Noon	19	1435	5.2%	202	8.2%	1637	5.5%
12	Noon	19	1636	6.0%	167	6.8%	1803	6.0%
13	1P-2P	19	1600	5.9%	243	9.9%	1843	6.2%
14	2P-3P	19	1969	7.2%	187	7.6%	2156	7.2%
15	3P	19	2080	7.6%	140	5.7%	2220	7.4%
16	4P	19	2439	8.9%	126	5.1%	2565	8.6%
17	5P	19	3087	11.3%	91	3.7%	3178	10.7%
18	6P	19	1785	6.5%	76	3.1%	1861	6.2%
19	7P	19	1243	4.5%	64	2.6%	1307	4.4%
20	8P	19	990	3.6%	46	1.9%	1036	3.5%
21	9P	19	744	2.7%	37	1.5%	781	2.6%
22	10P-11P	19	447	1.6%	20	0.8%	467	1.6%
23	11P-Mid	19	233	0.9%	16	0.6%	249	0.8%
			27343	100%	2467	100%	29810	100%

