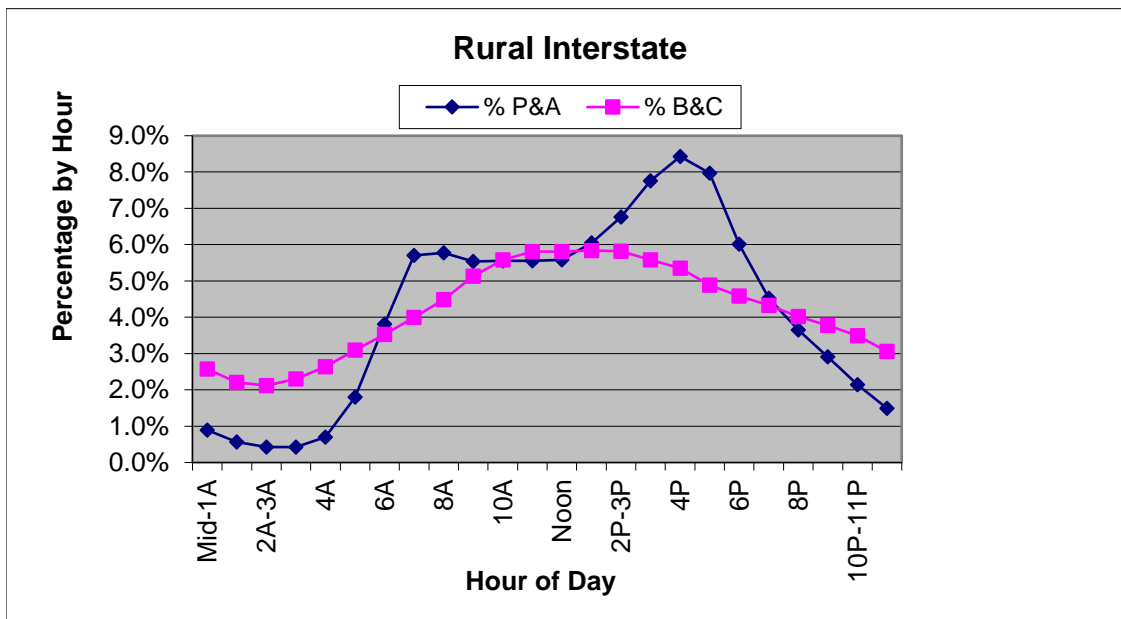


Hourly Percent by Vehicle Type
Rural Interstate
 Sample= 27 Counts
 Sample of Permanent ATR's and Portable Counts Taken in 2009

Hour	Hour of Day	FC	P& A (Cars)	% P&A (Cars)	B&C (Trucks)	% B&C (Trucks)	Total	% Total
0	Mid-1A	1	30776	0.9%	37825	2.6%	68601	1.4%
1	1A-2A	1	19491	0.6%	32407	2.2%	51898	1.1%
2	2A-3A	1	14660	0.4%	31134	2.1%	45794	0.9%
3	3A	1	14750	0.4%	33801	2.3%	48551	1.0%
4	4A	1	24023	0.7%	38796	2.6%	62819	1.3%
5	5A	1	62156	1.8%	45500	3.1%	107656	2.2%
6	6A	1	131556	3.8%	51883	3.5%	183439	3.7%
7	7A	1	197019	5.7%	58705	4.0%	255724	5.2%
8	8A	1	199530	5.8%	65895	4.5%	265425	5.4%
9	9A	1	191423	5.5%	75408	5.1%	266831	5.4%
10	10A	1	191990	5.6%	82039	5.6%	274029	5.6%
11	11A-Noon	1	192100	5.6%	85361	5.8%	277461	5.6%
12	Noon	1	193019	5.6%	85361	5.8%	278380	5.7%
13	1P-2P	1	209139	6.1%	85810	5.8%	294949	6.0%
14	2P-3P	1	233837	6.8%	85491	5.8%	319328	6.5%
15	3P	1	268056	7.8%	82051	5.6%	350107	7.1%
16	4P	1	291323	8.4%	78597	5.3%	369920	7.5%
17	5P	1	275467	8.0%	71810	4.9%	347277	7.0%
18	6P	1	207821	6.0%	67372	4.6%	275193	5.6%
19	7P	1	156295	4.5%	63552	4.3%	219847	4.5%
20	8P	1	126029	3.6%	59130	4.0%	185159	3.8%
21	9P	1	100665	2.9%	55470	3.8%	156135	3.2%
22	10P-11P	1	74024	2.1%	51243	3.5%	125267	2.5%
23	11P-Mid	1	51364	1.5%	44983	3.1%	96347	2.0%
			3456513	100%	1469624	100%	4926137	100%



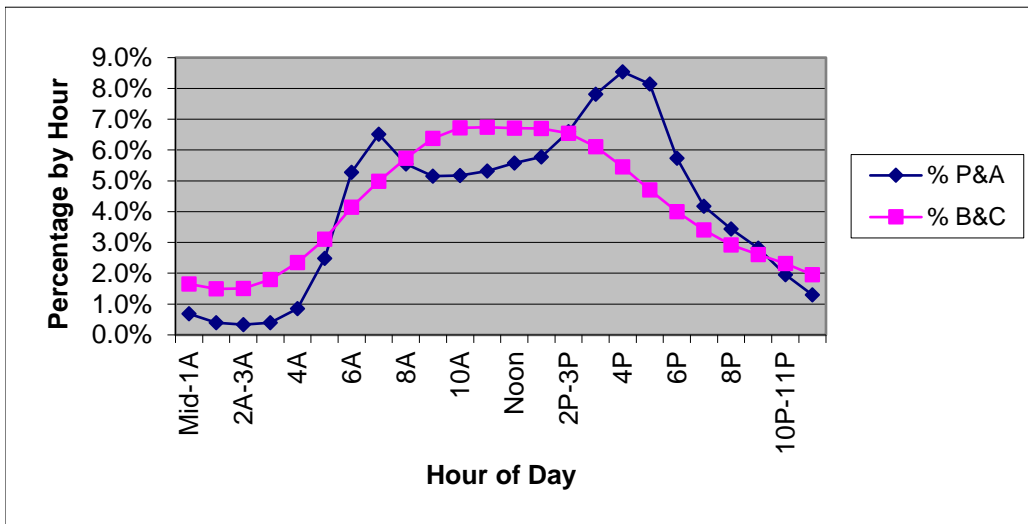
Hourly Percent by Vehicle Type

Rural Principal Arterial

Sample = 194 Counts

24 and 48 Hour Portable Counts Taken in 2009

Hour	Hour of Day	FC	P& A (Cars)	% P&A (Cars)	B&C (Trucks)	% B&C (Trucks)	Total	% Total
0	Mid-1A	2	30311	0.7%	14304	1.7%	44615	0.8%
1	1A-2A	2	17582	0.4%	12927	1.5%	30509	0.6%
2	2A-3A	2	14627	0.3%	13048	1.5%	27675	0.5%
3	3A	2	17417	0.4%	15539	1.8%	32956	0.6%
4	4A	2	37339	0.8%	20341	2.3%	57680	1.1%
5	5A	2	109393	2.5%	26944	3.1%	136337	2.6%
6	6A	2	232145	5.3%	35874	4.1%	268019	5.1%
7	7A	2	286634	6.5%	43190	5.0%	329824	6.3%
8	8A	2	243906	5.5%	49720	5.7%	293626	5.6%
9	9A	2	226826	5.2%	55310	6.4%	282136	5.4%
10	10A	2	227596	5.2%	58200	6.7%	285796	5.4%
11	11A-Noon	2	233833	5.3%	58404	6.7%	292237	5.6%
12	Noon	2	245548	5.6%	58180	6.7%	303728	5.8%
13	1P-2P	2	254149	5.8%	58047	6.7%	312196	5.9%
14	2P-3P	2	290211	6.6%	56671	6.5%	346882	6.6%
15	3P	2	343508	7.8%	52886	6.1%	396394	7.5%
16	4P	2	375655	8.5%	47223	5.4%	422878	8.0%
17	5P	2	358297	8.1%	40752	4.7%	399049	7.6%
18	6P	2	252149	5.7%	34640	4.0%	286789	5.4%
19	7P	2	183619	4.2%	29514	3.4%	213133	4.0%
20	8P	2	151280	3.4%	25281	2.9%	176561	3.4%
21	9P	2	123882	2.8%	22605	2.6%	146487	2.8%
22	10P-11P	2	85825	2.0%	20080	2.3%	105905	2.0%
23	11P-Mid	2	57136	1.3%	16884	1.9%	74020	1.4%
			4398868	100%	866564	100%	5265432	100%



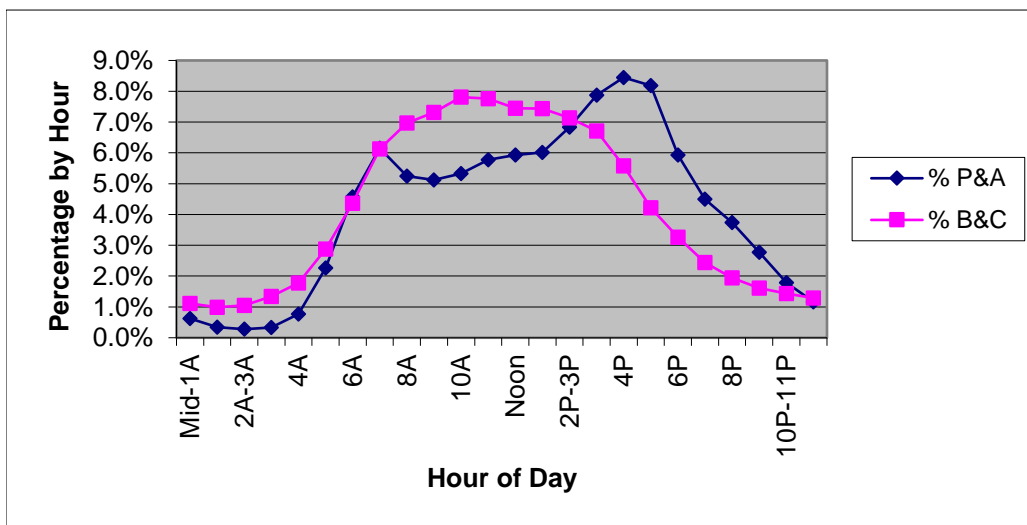
Hourly Percent by Vehicle Type

Rural Minor Arterial

Sample = 194 Counts

24 and 48 Hour Portable Counts Taken in 2009

Hour	Hour of Day	FC	P& A (Cars)	% P&A (Cars)	B&C (Trucks)	% B&C (Trucks)	Total	% Total
0	Mid-1A	6	10202	0.6%	1764	1.1%	11966	0.7%
1	1A-2A	6	5648	0.3%	1564	1.0%	7212	0.4%
2	2A-3A	6	4494	0.3%	1658	1.0%	6152	0.3%
3	3A	6	5415	0.3%	2121	1.3%	7536	0.4%
4	4A	6	12421	0.8%	2802	1.8%	15223	0.9%
5	5A	6	36751	2.3%	4550	2.9%	41301	2.3%
6	6A	6	74278	4.6%	6889	4.4%	81167	4.6%
7	7A	6	100011	6.2%	9681	6.1%	109692	6.1%
8	8A	6	85340	5.2%	11017	7.0%	96357	5.4%
9	9A	6	83329	5.1%	11558	7.3%	94887	5.3%
10	10A	6	86653	5.3%	12348	7.8%	99001	5.6%
11	11A-Noon	6	93890	5.8%	12261	7.8%	106151	6.0%
12	Noon	6	96485	5.9%	11780	7.5%	108265	6.1%
13	1P-2P	6	97849	6.0%	11763	7.4%	109612	6.1%
14	2P-3P	6	111112	6.8%	11286	7.1%	122398	6.9%
15	3P	6	127968	7.9%	10610	6.7%	138578	7.8%
16	4P	6	137311	8.4%	8821	5.6%	146132	8.2%
17	5P	6	133049	8.2%	6660	4.2%	139709	7.8%
18	6P	6	96430	5.9%	5156	3.3%	101586	5.7%
19	7P	6	73079	4.5%	3860	2.4%	76939	4.3%
20	8P	6	60748	3.7%	3072	1.9%	63820	3.6%
21	9P	6	45046	2.8%	2552	1.6%	47598	2.7%
22	10P-11P	6	29106	1.8%	2271	1.4%	31377	1.8%
23	11P-Mid	6	18932	1.2%	2038	1.3%	20970	1.2%
			1625547	100%	158082	100%	1783629	100%

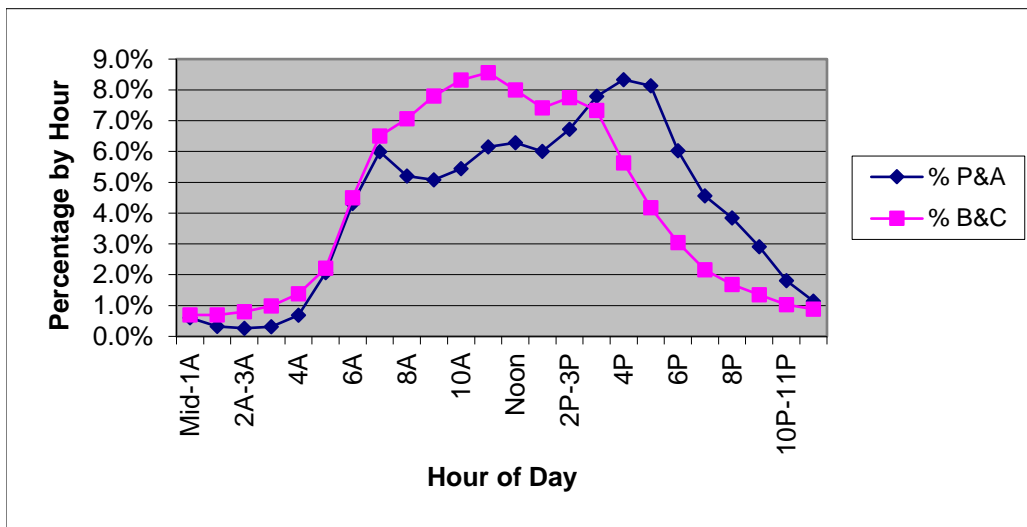


Hourly Percent by Vehicle Type

Rural Major Collector
Sample = 420 Counts

24 and 48 Hour Portable Counts Taken in 2009

Hour	Hour of Day	FC	P& A (Cars)	% P&A (Cars)	B&C (Trucks)	% B&C (Trucks)	Total	% Total
0	Mid-1A	7	10807	0.6%	841	0.7%	11648	0.6%
1	1A-2A	7	5756	0.3%	832	0.7%	6588	0.3%
2	2A-3A	7	4715	0.3%	962	0.8%	5677	0.3%
3	3A	7	5633	0.3%	1189	1.0%	6822	0.4%
4	4A	7	12344	0.7%	1661	1.4%	14005	0.7%
5	5A	7	37019	2.1%	2656	2.2%	39675	2.1%
6	6A	7	76932	4.3%	5398	4.5%	82330	4.3%
7	7A	7	106978	6.0%	7812	6.5%	114790	6.0%
8	8A	7	93001	5.2%	8483	7.1%	101484	5.3%
9	9A	7	90806	5.1%	9363	7.8%	100169	5.3%
10	10A	7	97201	5.4%	9989	8.3%	107190	5.6%
11	11A-Noon	7	109833	6.1%	10277	8.6%	120110	6.3%
12	Noon	7	112341	6.3%	9599	8.0%	121940	6.4%
13	1P-2P	7	107252	6.0%	8907	7.4%	116159	6.1%
14	2P-3P	7	119969	6.7%	9302	7.7%	129271	6.8%
15	3P	7	139081	7.8%	8802	7.3%	147883	7.8%
16	4P	7	148890	8.3%	6762	5.6%	155652	8.2%
17	5P	7	145373	8.1%	5013	4.2%	150386	7.9%
18	6P	7	107672	6.0%	3660	3.0%	111332	5.8%
19	7P	7	81512	4.6%	2600	2.2%	84112	4.4%
20	8P	7	68594	3.8%	2019	1.7%	70613	3.7%
21	9P	7	51905	2.9%	1624	1.4%	53529	2.8%
22	10P-11P	7	32264	1.8%	1231	1.0%	33495	1.8%
23	11P-Mid	7	20466	1.1%	1064	0.9%	21530	1.1%
			1786344	100%	120046	100%	1906390	100%



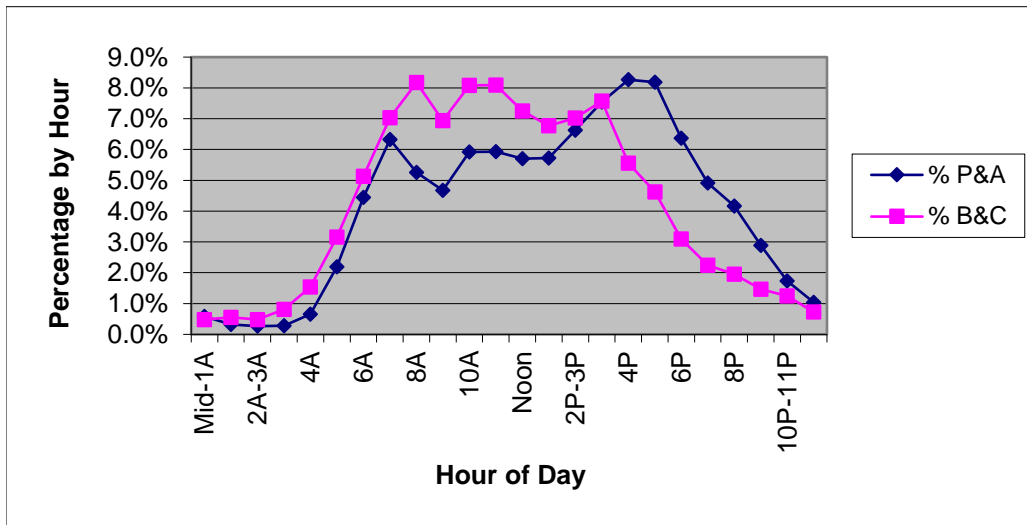
Hourly Percent by Vehicle Type

Rural Minor Collector

Sample = 37 Counts

24 and 48 Hour Portable Counts Taken in 2009

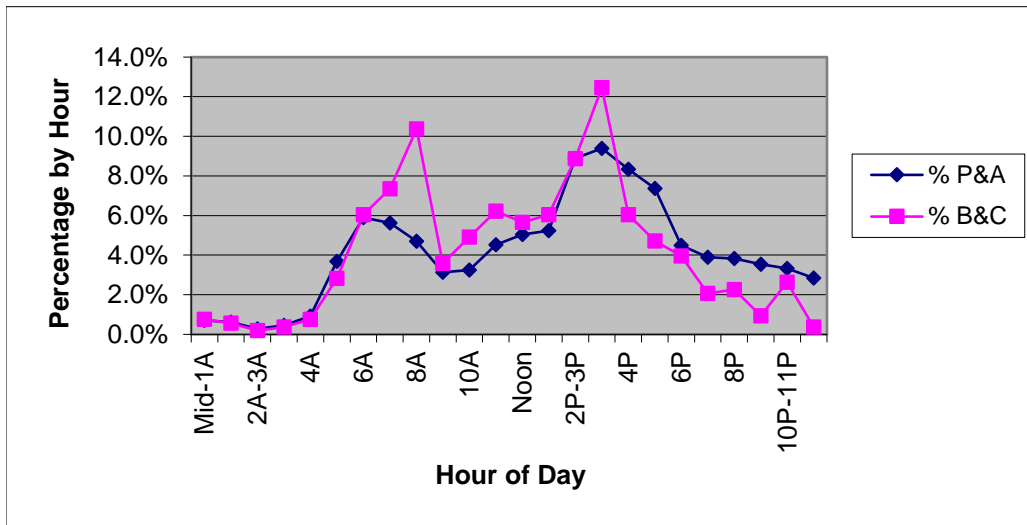
Hour	Hour of Day	FC	P& A (Cars)	% P&A (Cars)	B&C (Trucks)	% B&C (Trucks)	Total	% Total
0	Mid-1A	8	1067	0.6%	42	0.5%	1109	0.6%
1	1A-2A	8	580	0.3%	48	0.6%	628	0.3%
2	2A-3A	8	485	0.3%	42	0.5%	527	0.3%
3	3A	8	515	0.3%	70	0.8%	585	0.3%
4	4A	8	1186	0.7%	134	1.5%	1320	0.7%
5	5A	8	3992	2.2%	274	3.2%	4266	2.2%
6	6A	8	8105	4.4%	446	5.1%	8551	4.5%
7	7A	8	11531	6.3%	611	7.0%	12142	6.4%
8	8A	8	9579	5.3%	710	8.2%	10289	5.4%
9	9A	8	8515	4.7%	603	6.9%	9118	4.8%
10	10A	8	10799	5.9%	702	8.1%	11501	6.0%
11	11A-Noon	8	10810	5.9%	703	8.1%	11513	6.0%
12	Noon	8	10392	5.7%	630	7.3%	11022	5.8%
13	1P-2P	8	10431	5.7%	588	6.8%	11019	5.8%
14	2P-3P	8	12080	6.6%	610	7.0%	12690	6.6%
15	3P	8	13746	7.5%	658	7.6%	14404	7.5%
16	4P	8	15067	8.3%	483	5.6%	15550	8.1%
17	5P	8	14926	8.2%	402	4.6%	15328	8.0%
18	6P	8	11615	6.4%	269	3.1%	11884	6.2%
19	7P	8	8960	4.9%	195	2.2%	9155	4.8%
20	8P	8	7589	4.2%	170	2.0%	7759	4.1%
21	9P	8	5260	2.9%	127	1.5%	5387	2.8%
22	10P-11P	8	3166	1.7%	108	1.2%	3274	1.7%
23	11P-Mid	8	1889	1.0%	63	0.7%	1952	1.0%
			182285	100%	8688	100%	190973	100%



Hourly Percent by Vehicle Type

Rual Local
Sample = 3 Counts
24 and 48 Hour Portable Counts Taken in 2009

Hour	Hour of Day	FC	P& A (Cars)	% P&A (Cars)	B&C (Trucks)	% B&C (Trucks)	Total	% Total
0	Mid-1A	9	65	0.7%	4	0.8%	69	0.7%
1	1A-2A	9	56	0.6%	3	0.6%	59	0.6%
2	2A-3A	9	26	0.3%	1	0.2%	27	0.3%
3	3A	9	42	0.5%	2	0.4%	44	0.5%
4	4A	9	85	0.9%	4	0.8%	89	0.9%
5	5A	9	339	3.7%	15	2.8%	354	3.6%
6	6A	9	543	5.9%	32	6.0%	575	5.9%
7	7A	9	517	5.6%	39	7.4%	556	5.7%
8	8A	9	433	4.7%	55	10.4%	488	5.0%
9	9A	9	289	3.1%	19	3.6%	308	3.2%
10	10A	9	299	3.2%	26	4.9%	325	3.3%
11	11A-Noon	9	417	4.5%	33	6.2%	450	4.6%
12	Noon	9	464	5.0%	30	5.7%	494	5.1%
13	1P-2P	9	481	5.2%	32	6.0%	513	5.3%
14	2P-3P	9	818	8.9%	47	8.9%	865	8.9%
15	3P	9	864	9.4%	66	12.5%	930	9.6%
16	4P	9	767	8.3%	32	6.0%	799	8.2%
17	5P	9	678	7.4%	25	4.7%	703	7.2%
18	6P	9	413	4.5%	21	4.0%	434	4.5%
19	7P	9	359	3.9%	11	2.1%	370	3.8%
20	8P	9	352	3.8%	12	2.3%	364	3.7%
21	9P	9	326	3.5%	5	0.9%	331	3.4%
22	10P-11P	9	306	3.3%	14	2.6%	320	3.3%
23	11P-Mid	9	262	2.8%	2	0.4%	264	2.7%
			9201	100%	530	100%	9731	100%



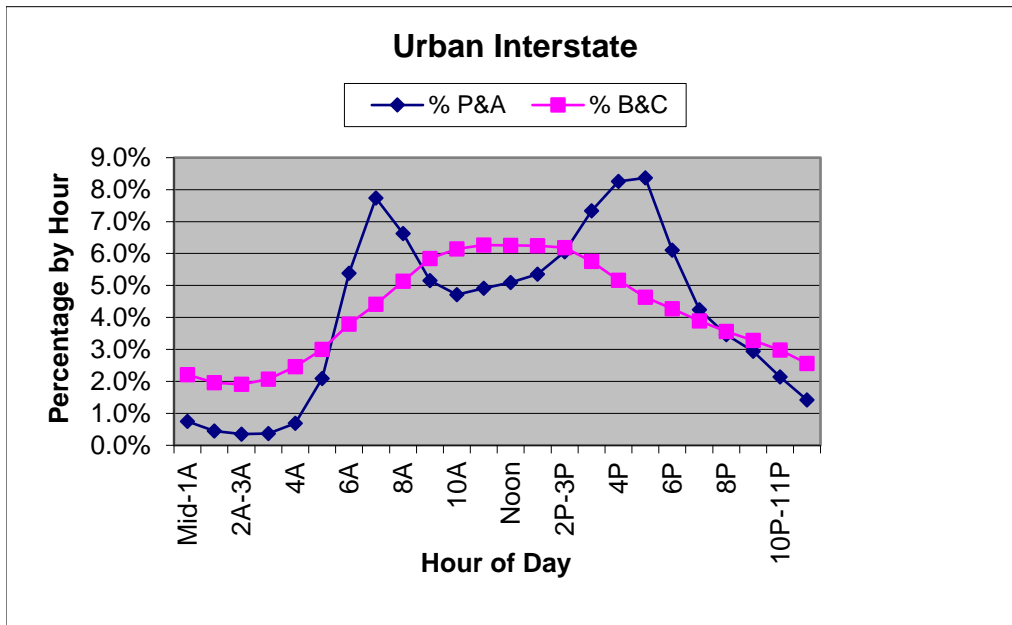
Hourly Percent by Vehicle Type

Urban Interstate

Sample= 38 Counts

Permanent ATR's and Portable Counts Taken in 2009

Hour	Hour of Day	FC	P& A (Cars)	% P&A (Cars)	B&C (Trucks)	% B&C (Trucks)	Total	% Total
0	Mid-1A	11	131579	0.7%	57084	2.2%	188663	0.9%
1	1A-2A	11	77975	0.4%	50638	2.0%	128613	0.6%
2	2A-3A	11	61796	0.4%	49123	1.9%	110919	0.6%
3	3A	11	64748	0.4%	53281	2.1%	118029	0.6%
4	4A	11	121082	0.7%	63403	2.5%	184485	0.9%
5	5A	11	366853	2.1%	77424	3.0%	444277	2.2%
6	6A	11	945033	5.4%	97809	3.8%	1042842	5.2%
7	7A	11	1357326	7.7%	113842	4.4%	1471168	7.3%
8	8A	11	1163482	6.6%	132281	5.1%	1295763	6.4%
9	9A	11	903596	5.1%	150774	5.8%	1054370	5.2%
10	10A	11	827809	4.7%	158409	6.1%	986218	4.9%
11	11A-Noon	11	863068	4.9%	161557	6.3%	1024625	5.1%
12	Noon	11	894712	5.1%	161233	6.3%	1055945	5.2%
13	1P-2P	11	938801	5.3%	161129	6.2%	1099930	5.5%
14	2P-3P	11	1061937	6.1%	159413	6.2%	1221350	6.1%
15	3P	11	1286715	7.3%	148346	5.8%	1435061	7.1%
16	4P	11	1449533	8.3%	133112	5.2%	1582645	7.9%
17	5P	11	1468153	8.4%	119578	4.6%	1587731	7.9%
18	6P	11	1071973	6.1%	110226	4.3%	1182199	5.9%
19	7P	11	744759	4.2%	100293	3.9%	845052	4.2%
20	8P	11	606749	3.5%	91967	3.6%	698716	3.5%
21	9P	11	515856	2.9%	84488	3.3%	600344	3.0%
22	10P-11P	11	375526	2.1%	76965	3.0%	452491	2.2%
23	11P-Mid	11	249946	1.4%	66075	2.6%	316021	1.6%
			17549007	100%	2578450	100%	20127457	100%



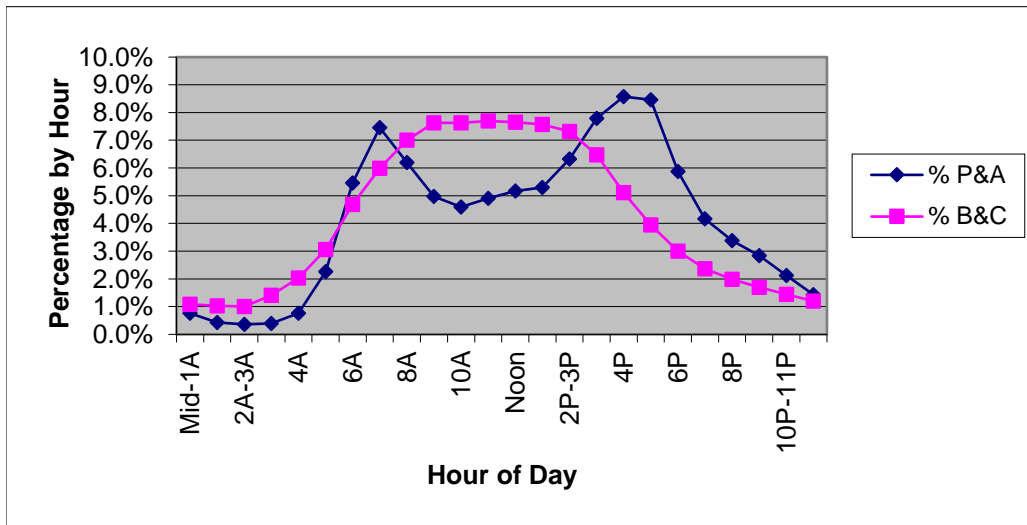
Hourly Percent by Vehicle Type

Urban Freeway and X-Way

Sample = 37 Counts

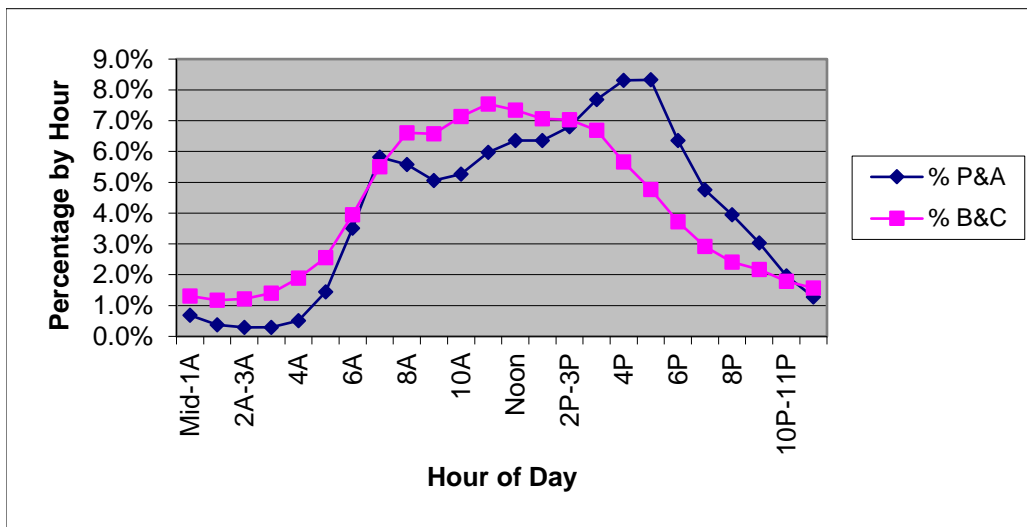
Permanent ATR's and Portable Counts Taken in 2009

Hour	Hour of Day	FC	P& A (Cars)	% P&A (Cars)	B&C (Trucks)	% B&C (Trucks)	Total	% Total
0	Mid-1A	12	32494	0.8%	3083	1.1%	35577	0.8%
1	1A-2A	12	18070	0.4%	2909	1.0%	20979	0.5%
2	2A-3A	12	15477	0.4%	2867	1.0%	18344	0.4%
3	3A	12	16910	0.4%	4020	1.4%	20930	0.5%
4	4A	12	32677	0.8%	5775	2.0%	38452	0.8%
5	5A	12	96258	2.3%	8696	3.1%	104954	2.3%
6	6A	12	232779	5.5%	13338	4.7%	246117	5.4%
7	7A	12	317745	7.5%	17060	6.0%	334805	7.4%
8	8A	12	264057	6.2%	19933	7.0%	283990	6.2%
9	9A	12	211758	5.0%	21696	7.6%	233454	5.1%
10	10A	12	195498	4.6%	21716	7.6%	217214	4.8%
11	11A-Noon	12	209119	4.9%	21897	7.7%	231016	5.1%
12	Noon	12	220160	5.2%	21775	7.7%	241935	5.3%
13	1P-2P	12	225940	5.3%	21531	7.6%	247471	5.4%
14	2P-3P	12	269539	6.3%	20822	7.3%	290361	6.4%
15	3P	12	331774	7.8%	18415	6.5%	350189	7.7%
16	4P	12	365360	8.6%	14552	5.1%	379912	8.4%
17	5P	12	360671	8.5%	11227	3.9%	371898	8.2%
18	6P	12	250106	5.9%	8527	3.0%	258633	5.7%
19	7P	12	177645	4.2%	6728	2.4%	184373	4.1%
20	8P	12	143902	3.4%	5666	2.0%	149568	3.3%
21	9P	12	121081	2.8%	4825	1.7%	125906	2.8%
22	10P-11P	12	90645	2.1%	4112	1.4%	94757	2.1%
23	11P-Mid	12	61208	1.4%	3409	1.2%	64617	1.4%
			4260873	100%	284579	100%	4545452	100%



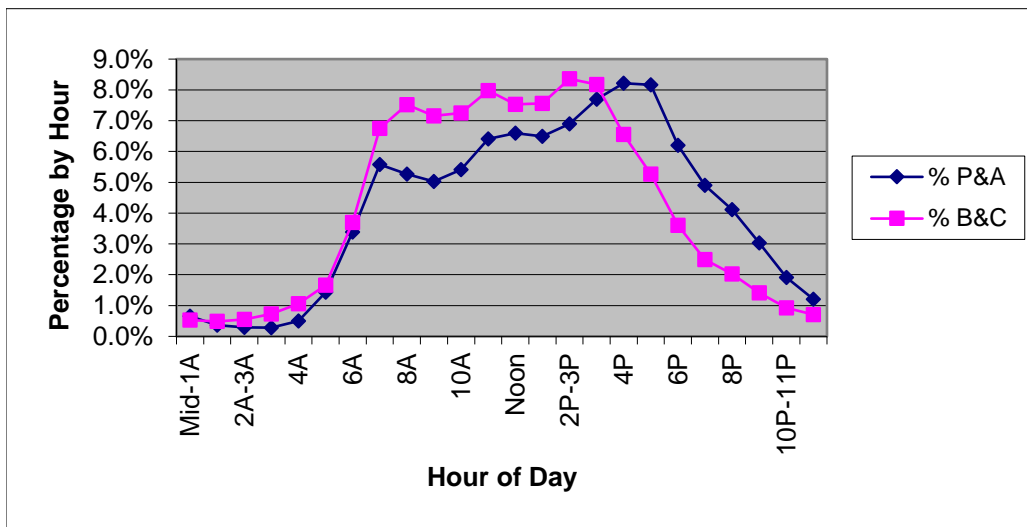
Hourly Percent by Vehicle Type
 Urban Principal Arterial
 Sample = 163 Counts
 24 and 48 Hour Portable Counts Taken in 2009

Hour	Hour of Day	FC	P& A (Cars)	% P&A (Cars)	B&C (Trucks)	% B&C (Trucks)	Total	% Total
0	Mid-1A	14	33065	0.7%	4180	1.3%	37245	0.7%
1	1A-2A	14	18205	0.4%	3742	1.2%	21947	0.4%
2	2A-3A	14	14323	0.3%	3875	1.2%	18198	0.4%
3	3A	14	14231	0.3%	4477	1.4%	18708	0.4%
4	4A	14	24599	0.5%	6026	1.9%	30625	0.6%
5	5A	14	69639	1.4%	8133	2.6%	77772	1.5%
6	6A	14	169603	3.5%	12599	4.0%	182202	3.5%
7	7A	14	280731	5.8%	17555	5.5%	298286	5.8%
8	8A	14	269660	5.6%	21071	6.6%	290731	5.6%
9	9A	14	244472	5.1%	20969	6.6%	265441	5.2%
10	10A	14	254477	5.3%	22736	7.1%	277213	5.4%
11	11A-Noon	14	288562	6.0%	24044	7.5%	312606	6.1%
12	Noon	14	307132	6.4%	23414	7.3%	330546	6.4%
13	1P-2P	14	307175	6.4%	22507	7.1%	329682	6.4%
14	2P-3P	14	328874	6.8%	22411	7.0%	351285	6.8%
15	3P	14	371057	7.7%	21339	6.7%	392396	7.6%
16	4P	14	401586	8.3%	18053	5.7%	419639	8.1%
17	5P	14	402131	8.3%	15195	4.8%	417326	8.1%
18	6P	14	306952	6.4%	11851	3.7%	318803	6.2%
19	7P	14	229943	4.8%	9308	2.9%	239251	4.6%
20	8P	14	190611	3.9%	7694	2.4%	198305	3.9%
21	9P	14	146346	3.0%	6932	2.2%	153278	3.0%
22	10P-11P	14	95055	2.0%	5700	1.8%	100755	2.0%
23	11P-Mid	14	61734	1.3%	4989	1.6%	66723	1.3%
			4830163	100%	318800	100%	5148963	100%



Hourly Percent by Vehicle Type
 Urban Minor Arterial
 Sample = 247 Counts
 24 and 48 Hour Portable Counts Taken in 2009

Hour	Hour of Day	FC	P& A (Cars)	% P&A (Cars)	B&C (Trucks)	% B&C (Trucks)	Total	% Total
0	Mid-1A	16	21041	0.7%	613	0.5%	21654	0.6%
1	1A-2A	16	11698	0.4%	560	0.5%	12258	0.4%
2	2A-3A	16	9324	0.3%	636	0.5%	9960	0.3%
3	3A	16	9158	0.3%	841	0.7%	9999	0.3%
4	4A	16	16117	0.5%	1231	1.1%	17348	0.5%
5	5A	16	46129	1.4%	1929	1.7%	48058	1.4%
6	6A	16	109154	3.4%	4284	3.7%	113438	3.4%
7	7A	16	179838	5.6%	7817	6.8%	187655	5.6%
8	8A	16	169793	5.3%	8704	7.5%	178497	5.3%
9	9A	16	162208	5.0%	8288	7.2%	170496	5.1%
10	10A	16	174533	5.4%	8389	7.2%	182922	5.5%
11	11A-Noon	16	206620	6.4%	9233	8.0%	215853	6.5%
12	Noon	16	212699	6.6%	8721	7.5%	221420	6.6%
13	1P-2P	16	209439	6.5%	8753	7.6%	218192	6.5%
14	2P-3P	16	222537	6.9%	9675	8.4%	232212	6.9%
15	3P	16	248275	7.7%	9459	8.2%	257734	7.7%
16	4P	16	265032	8.2%	7591	6.6%	272623	8.2%
17	5P	16	263308	8.2%	6098	5.3%	269406	8.1%
18	6P	16	199878	6.2%	4167	3.6%	204045	6.1%
19	7P	16	158028	4.9%	2887	2.5%	160915	4.8%
20	8P	16	132581	4.1%	2343	2.0%	134924	4.0%
21	9P	16	97771	3.0%	1635	1.4%	99406	3.0%
22	10P-11P	16	61514	1.9%	1071	0.9%	62585	1.9%
23	11P-Mid	16	38938	1.2%	818	0.7%	39756	1.2%
			3225613	100%	115743	100%	3341356	100%



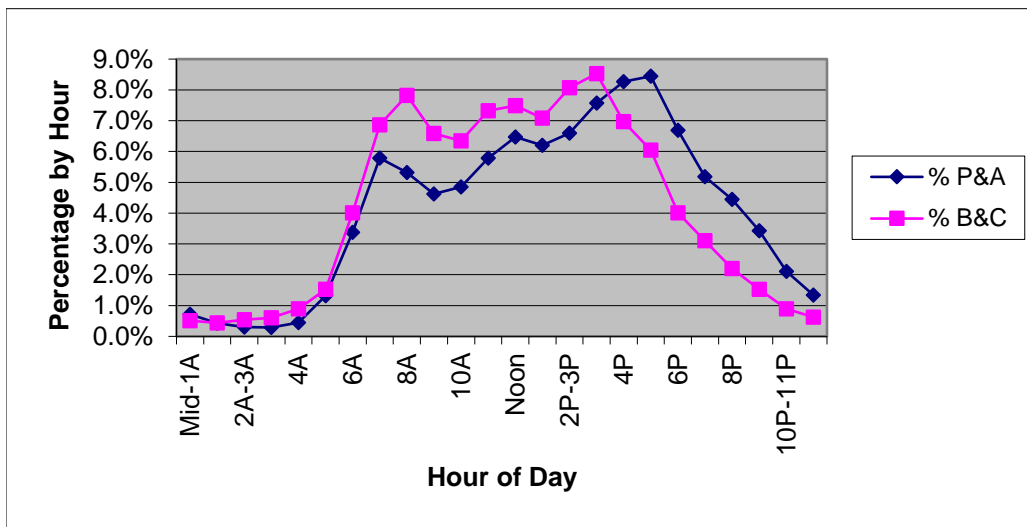
Hourly Percent by Vehicle Type

Urban Collector

Sample = 137 Counts

24 and 48 Hour Portable Counts Taken in 2009

Hour	Hour of Day	FC	P& A (Cars)	% P&A (Cars)	B&C (Trucks)	% B&C (Trucks)	Total	% Total
0	Mid-1A	17	8841	0.7%	186	0.5%	9027	0.7%
1	1A-2A	17	5233	0.4%	160	0.4%	5393	0.4%
2	2A-3A	17	3730	0.3%	196	0.5%	3926	0.3%
3	3A	17	3569	0.3%	222	0.6%	3791	0.3%
4	4A	17	5523	0.4%	328	0.9%	5851	0.5%
5	5A	17	16234	1.3%	556	1.5%	16790	1.3%
6	6A	17	41559	3.4%	1465	4.0%	43024	3.4%
7	7A	17	71360	5.8%	2507	6.9%	73867	5.8%
8	8A	17	65484	5.3%	2855	7.8%	68339	5.4%
9	9A	17	57028	4.6%	2404	6.6%	59432	4.7%
10	10A	17	59792	4.9%	2316	6.3%	62108	4.9%
11	11A-Noon	17	71310	5.8%	2673	7.3%	73983	5.8%
12	Noon	17	79698	6.5%	2733	7.5%	82431	6.5%
13	1P-2P	17	76433	6.2%	2586	7.1%	79019	6.2%
14	2P-3P	17	81316	6.6%	2947	8.1%	84263	6.6%
15	3P	17	93297	7.6%	3114	8.5%	96411	7.6%
16	4P	17	101882	8.3%	2546	7.0%	104428	8.2%
17	5P	17	104036	8.4%	2206	6.0%	106242	8.4%
18	6P	17	82423	6.7%	1464	4.0%	83887	6.6%
19	7P	17	63919	5.2%	1133	3.1%	65052	5.1%
20	8P	17	54804	4.4%	804	2.2%	55608	4.4%
21	9P	17	42272	3.4%	559	1.5%	42831	3.4%
22	10P-11P	17	26049	2.1%	325	0.9%	26374	2.1%
23	11P-Mid	17	16520	1.3%	226	0.6%	16746	1.3%
			1232312	100%	36511	100%	1268823	100%



Hourly Percent by Vehicle Type

Urban Local
 Sample = 2 Counts
 24 and 48 Hour Portable Counts Taken in 2009

Hour	Hour of Day	FC	P& A (Cars)	% P&A (Cars)	B&C (Trucks)	% B&C (Trucks)	Total	% Total
0	Mid-1A	19	112	0.8%	3	0.5%	115	0.8%
1	1A-2A	19	42	0.3%	3	0.5%	45	0.3%
2	2A-3A	19	35	0.3%	3	0.5%	38	0.3%
3	3A	19	41	0.3%	1	0.2%	42	0.3%
4	4A	19	112	0.8%	5	0.9%	117	0.8%
5	5A	19	241	1.8%	16	2.8%	257	1.8%
6	6A	19	521	3.8%	11	1.9%	532	3.8%
7	7A	19	853	6.3%	44	7.7%	897	6.4%
8	8A	19	580	4.3%	38	6.6%	618	4.4%
9	9A	19	542	4.0%	32	5.6%	574	4.1%
10	10A	19	556	4.1%	59	10.3%	615	4.4%
11	11A-Noon	19	734	5.4%	43	7.5%	777	5.5%
12	Noon	19	1072	7.9%	63	11.0%	1135	8.0%
13	1P-2P	19	1015	7.5%	65	11.3%	1080	7.7%
14	2P-3P	19	944	7.0%	46	8.0%	990	7.0%
15	3P	19	972	7.2%	36	6.3%	1008	7.1%
16	4P	19	1110	8.2%	30	5.2%	1140	8.1%
17	5P	19	1047	7.7%	27	4.7%	1074	7.6%
18	6P	19	888	6.6%	15	2.6%	903	6.4%
19	7P	19	699	5.2%	11	1.9%	710	5.0%
20	8P	19	559	4.1%	7	1.2%	566	4.0%
21	9P	19	386	2.9%	4	0.7%	390	2.8%
22	10P-11P	19	254	1.9%	5	0.9%	259	1.8%
23	11P-Mid	19	218	1.6%	7	1.2%	225	1.6%
			13533	100%	574	100%	14107	100%

