

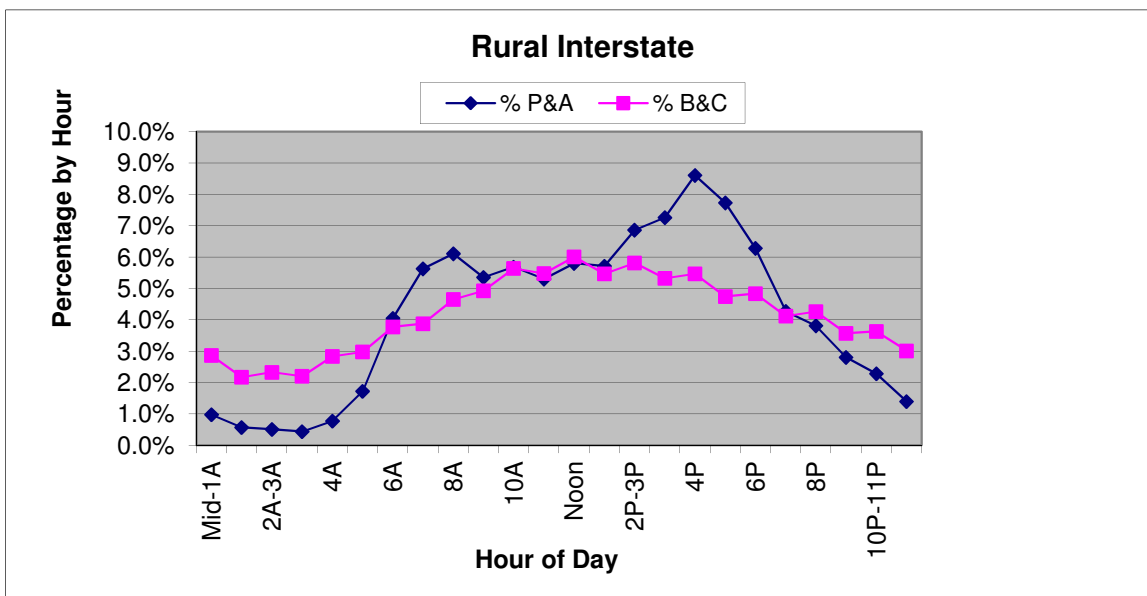
Hourly Percent by Vehicle Type

Rural Interstate

Sample = 36 Counts

Sample of Permanent ATR's and Portable Counts Taken in 2010

Hour	Hour of Day	FC	P& A (Cars)	% P&A (Cars)	B&C (Trucks)	% B&C (Trucks)	Total	% Total
0	Mid-1A	1	28535	1.0%	41074	2.9%	69609	1.6%
1	1A-2A	1	16543	0.6%	31059	2.2%	47602	1.1%
2	2A-3A	1	14918	0.5%	33366	2.3%	48284	1.1%
3	3A	1	12633	0.4%	31501	2.2%	44134	1.0%
4	4A	1	22638	0.8%	40570	2.8%	63208	1.5%
5	5A	1	50056	1.7%	42697	3.0%	92753	2.1%
6	6A	1	117565	4.0%	53997	3.8%	171562	4.0%
7	7A	1	163722	5.6%	55491	3.9%	219213	5.1%
8	8A	1	177545	6.1%	66649	4.7%	244194	5.6%
9	9A	1	155660	5.4%	70474	4.9%	226134	5.2%
10	10A	1	165242	5.7%	80703	5.6%	245945	5.7%
11	11A-Noon	1	154005	5.3%	78369	5.5%	232374	5.4%
12	Noon	1	168727	5.8%	86072	6.0%	254799	5.9%
13	1P-2P	1	165997	5.7%	78288	5.5%	244285	5.6%
14	2P-3P	1	199600	6.9%	83287	5.8%	282887	6.5%
15	3P	1	211165	7.3%	76155	5.3%	287320	6.6%
16	4P	1	250290	8.6%	78245	5.5%	328535	7.6%
17	5P	1	224585	7.7%	67928	4.7%	292513	6.7%
18	6P	1	182484	6.3%	69207	4.8%	251691	5.8%
19	7P	1	124102	4.3%	58992	4.1%	183094	4.2%
20	8P	1	110874	3.8%	60975	4.3%	171849	4.0%
21	9P	1	81613	2.8%	51140	3.6%	132753	3.1%
22	10P-11P	1	66297	2.3%	52049	3.6%	118346	2.7%
23	11P-Mid	1	40731	1.4%	43152	3.0%	83883	1.9%
			2905527	100%	1431440	100%	4336967	100%



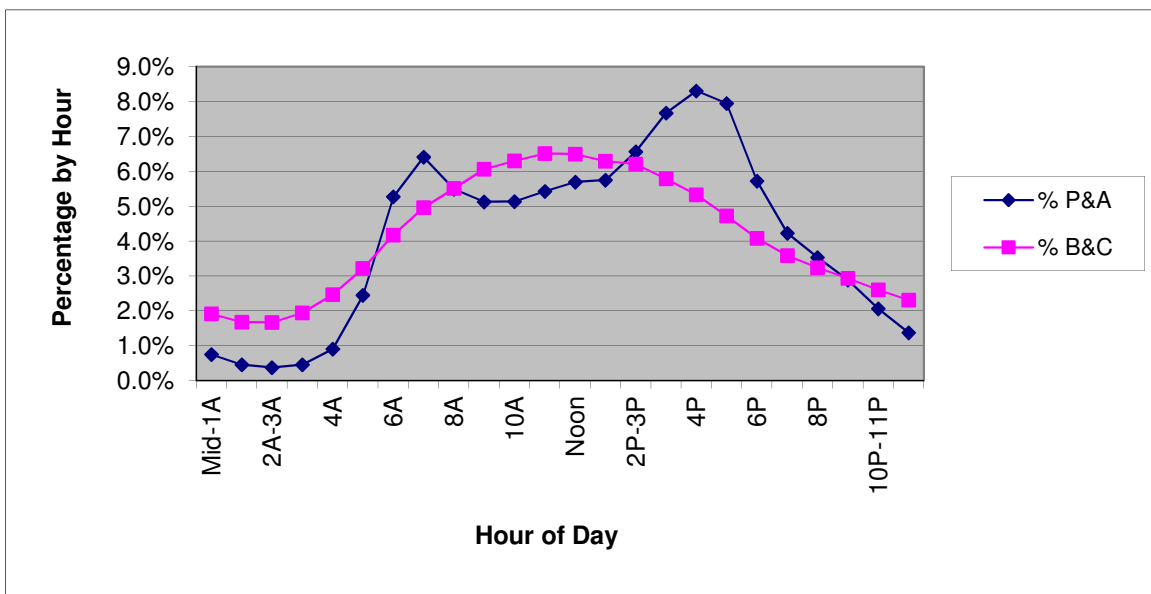
Hourly Percent by Vehicle Type

Rural Principal Arterial

Sample = 151 Counts

Sample of Permanent ATR's and Portable Counts Taken in 2010

Hour	Hour of Day	FC	P& A (Cars)	% P&A (Cars)	B&C (Trucks)	% B&C (Trucks)	Total	% Total
0	Mid-1A	2	23360	0.8%	13770	1.9%	37130	1.0%
1	1A-2A	2	14081	0.5%	12055	1.7%	26136	0.7%
2	2A-3A	2	11644	0.4%	11969	1.7%	23613	0.6%
3	3A	2	14220	0.5%	13937	1.9%	28157	0.7%
4	4A	2	28153	0.9%	17732	2.5%	45885	1.2%
5	5A	2	76019	2.4%	23128	3.2%	99147	2.6%
6	6A	2	163777	5.3%	30019	4.2%	193796	5.1%
7	7A	2	199096	6.4%	35672	5.0%	234768	6.1%
8	8A	2	170687	5.5%	39616	5.5%	210303	5.5%
9	9A	2	159101	5.1%	43572	6.1%	202673	5.3%
10	10A	2	159421	5.1%	45288	6.3%	204709	5.4%
11	11A-Noon	2	168649	5.4%	46814	6.5%	215463	5.6%
12	Noon	2	176787	5.7%	46684	6.5%	223471	5.8%
13	1P-2P	2	178473	5.7%	45244	6.3%	223717	5.8%
14	2P-3P	2	204082	6.6%	44614	6.2%	248696	6.5%
15	3P	2	238508	7.7%	41596	5.8%	280104	7.3%
16	4P	2	258024	8.3%	38322	5.3%	296346	7.7%
17	5P	2	246916	8.0%	33944	4.7%	280860	7.3%
18	6P	2	177640	5.7%	29300	4.1%	206940	5.4%
19	7P	2	131329	4.2%	25763	3.6%	157092	4.1%
20	8P	2	109696	3.5%	23234	3.2%	132930	3.5%
21	9P	2	89576	2.9%	21111	2.9%	110687	2.9%
22	10P-11P	2	63935	2.1%	18707	2.6%	82642	2.2%
23	11P-Mid	2	42612	1.4%	16573	2.3%	59185	1.5%
			3105786	100%	718664	100%	3824450	100%



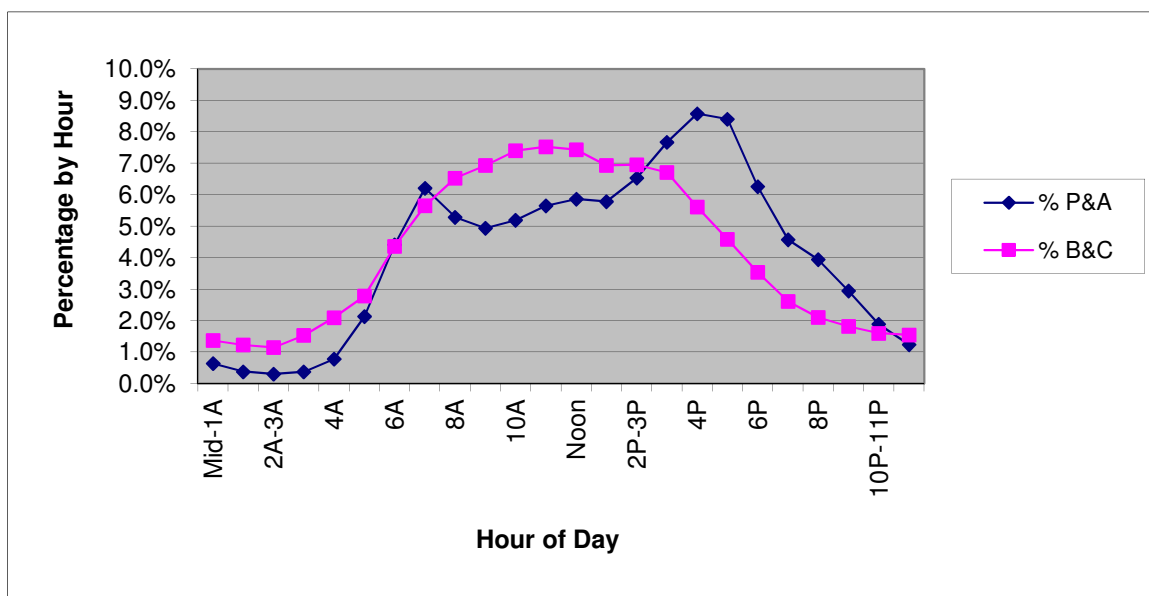
Hourly Percent by Vehicle Type

Rural Minor Arterial

Sample = 178 Counts

Sample of Permanent ATR's and Portable Counts Taken in 2010

Hour	Hour of Day	FC	P& A (Cars)	% P&A (Cars)	B&C (Trucks)	% B&C (Trucks)	Total	% Total
0	Mid-1A	6	9260	0.6%	2118	1.4%	11378	0.7%
1	1A-2A	6	5516	0.4%	1903	1.2%	7419	0.5%
2	2A-3A	6	4385	0.3%	1780	1.1%	6165	0.4%
3	3A	6	5383	0.4%	2379	1.5%	7762	0.5%
4	4A	6	11377	0.8%	3249	2.1%	14626	0.9%
5	5A	6	30997	2.1%	4311	2.8%	35308	2.2%
6	6A	6	64078	4.4%	6758	4.4%	70836	4.4%
7	7A	6	90154	6.2%	8748	5.6%	98902	6.2%
8	8A	6	76732	5.3%	10113	6.5%	86845	5.4%
9	9A	6	71642	4.9%	10740	6.9%	82382	5.1%
10	10A	6	75397	5.2%	11457	7.4%	86854	5.4%
11	11A-Noon	6	82063	5.7%	11654	7.5%	93717	5.8%
12	Noon	6	85101	5.9%	11500	7.4%	96601	6.0%
13	1P-2P	6	83932	5.8%	10728	6.9%	94660	5.9%
14	2P-3P	6	94856	6.5%	10766	7.0%	105622	6.6%
15	3P	6	111397	7.7%	10382	6.7%	121779	7.6%
16	4P	6	124503	8.6%	8685	5.6%	133188	8.3%
17	5P	6	121989	8.4%	7101	4.6%	129090	8.0%
18	6P	6	90884	6.3%	5471	3.5%	96355	6.0%
19	7P	6	66454	4.6%	4051	2.6%	70505	4.4%
20	8P	6	57278	3.9%	3261	2.1%	60539	3.8%
21	9P	6	42771	2.9%	2810	1.8%	45581	2.8%
22	10P-11P	6	27466	1.9%	2478	1.6%	29944	1.9%
23	11P-Mid	6	17947	1.2%	2394	1.5%	20341	1.3%
			1451562	100%	154837	100%	1606399	100%



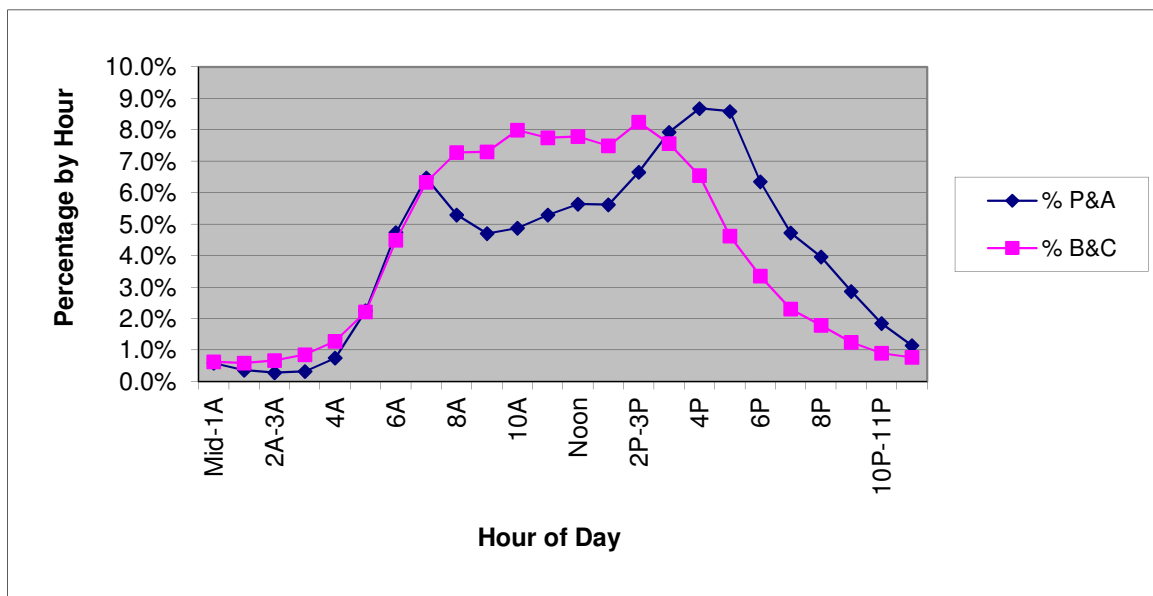
Hourly Percent by Vehicle Type

Rural Major Collector

Sample = 593 Counts

Sample of Permanent ATR's and Portable Counts Taken in 2010

Hour	Hour of Day	FC	P& A (Cars)	% P&A (Cars)	B&C (Trucks)	% B&C (Trucks)	Total	% Total
0	Mid-1A	7	13814	0.6%	988	0.6%	14802	0.6%
1	1A-2A	7	8587	0.4%	920	0.6%	9507	0.4%
2	2A-3A	7	6757	0.3%	1049	0.7%	7806	0.3%
3	3A	7	7601	0.3%	1346	0.9%	8947	0.4%
4	4A	7	17680	0.8%	2015	1.3%	19695	0.8%
5	5A	7	53195	2.3%	3470	2.2%	56665	2.3%
6	6A	7	111633	4.7%	7053	4.5%	118686	4.7%
7	7A	7	152604	6.5%	9927	6.3%	162531	6.5%
8	8A	7	124925	5.3%	11424	7.3%	136349	5.4%
9	9A	7	111000	4.7%	11442	7.3%	122442	4.9%
10	10A	7	114972	4.9%	12535	8.0%	127507	5.1%
11	11A-Noon	7	124814	5.3%	12153	7.7%	136967	5.4%
12	Noon	7	132892	5.6%	12220	7.8%	145112	5.8%
13	1P-2P	7	132387	5.6%	11752	7.5%	144139	5.7%
14	2P-3P	7	157011	6.7%	12931	8.2%	169942	6.8%
15	3P	7	186813	7.9%	11865	7.6%	198678	7.9%
16	4P	7	204581	8.7%	10268	6.5%	214849	8.5%
17	5P	7	202557	8.6%	7256	4.6%	209813	8.3%
18	6P	7	149747	6.4%	5260	3.4%	155007	6.2%
19	7P	7	111450	4.7%	3612	2.3%	115062	4.6%
20	8P	7	93489	4.0%	2807	1.8%	96296	3.8%
21	9P	7	67439	2.9%	1956	1.2%	69395	2.8%
22	10P-11P	7	43664	1.9%	1414	0.9%	45078	1.8%
23	11P-Mid	7	27082	1.1%	1205	0.8%	28287	1.1%
			2356694	100%	156868	100%	2513562	100%



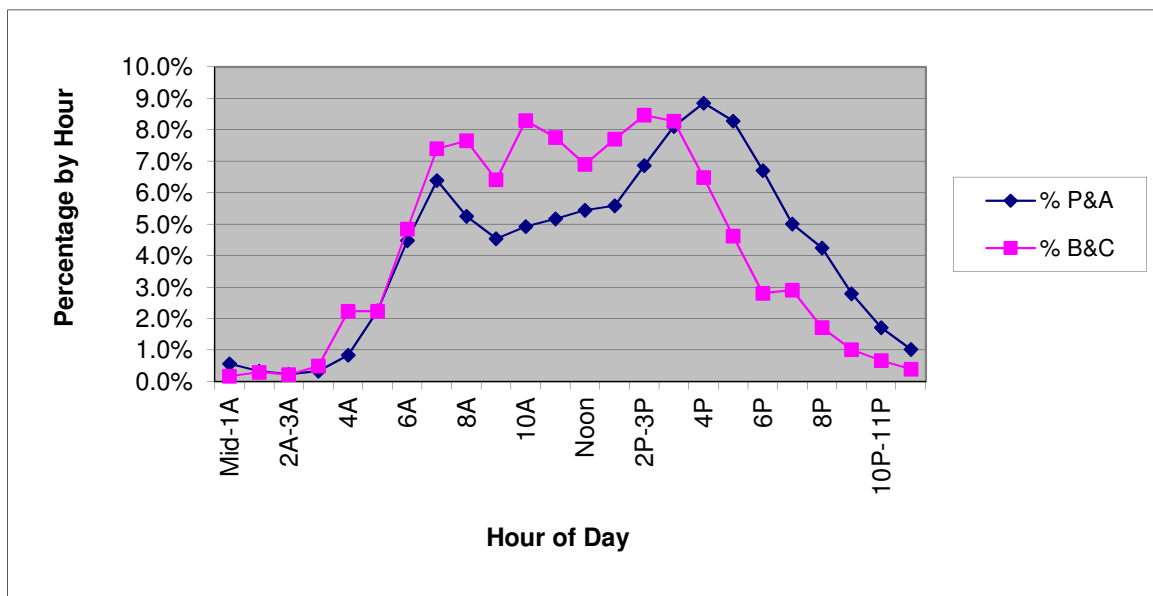
Hourly Percent by Vehicle Type

Rural Minor Collector

Sample = 55 Counts

Sample of Permanent ATR's and Portable Counts Taken in 2010

Hour	Hour of Day	FC	P& A (Cars)	% P&A (Cars)	B&C (Trucks)	% B&C (Trucks)	Total	% Total
0	Mid-1A	8	433	0.6%	7	0.2%	440	0.5%
1	1A-2A	8	256	0.3%	12	0.3%	268	0.3%
2	2A-3A	8	176	0.2%	9	0.2%	185	0.2%
3	3A	8	258	0.3%	20	0.5%	278	0.3%
4	4A	8	642	0.8%	90	2.2%	732	0.9%
5	5A	8	1722	2.3%	90	2.2%	1812	2.3%
6	6A	8	3429	4.5%	195	4.8%	3624	4.5%
7	7A	8	4891	6.4%	298	7.4%	5189	6.4%
8	8A	8	4020	5.3%	308	7.7%	4328	5.4%
9	9A	8	3471	4.5%	258	6.4%	3729	4.6%
10	10A	8	3766	4.9%	334	8.3%	4100	5.1%
11	11A-Noon	8	3953	5.2%	312	7.8%	4265	5.3%
12	Noon	8	4163	5.4%	278	6.9%	4441	5.5%
13	1P-2P	8	4272	5.6%	310	7.7%	4582	5.7%
14	2P-3P	8	5254	6.9%	341	8.5%	5595	7.0%
15	3P	8	6198	8.1%	333	8.3%	6531	8.1%
16	4P	8	6766	8.9%	261	6.5%	7027	8.7%
17	5P	8	6335	8.3%	186	4.6%	6521	8.1%
18	6P	8	5126	6.7%	113	2.8%	5239	6.5%
19	7P	8	3832	5.0%	117	2.9%	3949	4.9%
20	8P	8	3248	4.2%	69	1.7%	3317	4.1%
21	9P	8	2138	2.8%	41	1.0%	2179	2.7%
22	10P-11P	8	1311	1.7%	27	0.7%	1338	1.7%
23	11P-Mid	8	782	1.0%	16	0.4%	798	1.0%
			76442	100%	4025	100%	80467	100%



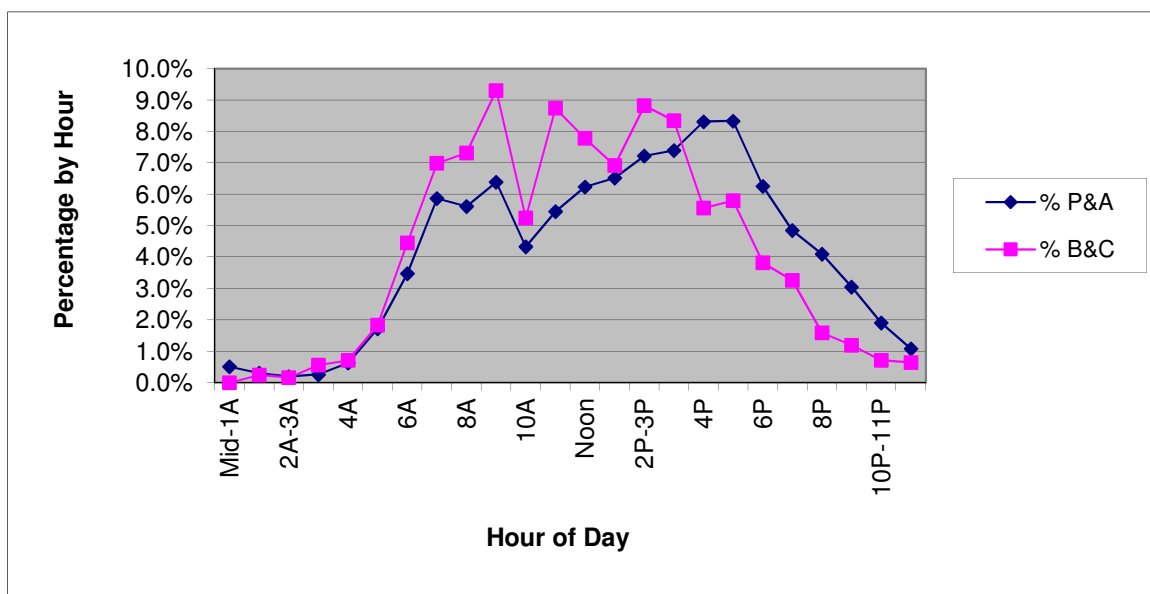
Hourly Percent by Vehicle Type

Rural Local

Sample = 5 Counts

Sample of Permanent ATR's and Portable Counts Taken in 2010

Hour	Hour of Day	FC	P& A (Cars)	% P&A (Cars)	B&C (Trucks)	% B&C (Trucks)	Total	% Total
0	Mid-1A	9	230	0.5%	0	0.0%	230	0.5%
1	1A-2A	9	136	0.3%	3	0.2%	139	0.3%
2	2A-3A	9	87	0.2%	2	0.2%	89	0.2%
3	3A	9	116	0.3%	7	0.6%	123	0.3%
4	4A	9	283	0.6%	9	0.7%	292	0.6%
5	5A	9	774	1.7%	23	1.8%	797	1.7%
6	6A	9	1564	3.5%	56	4.5%	1620	3.5%
7	7A	9	2645	5.9%	88	7.0%	2733	5.9%
8	8A	9	2531	5.6%	92	7.3%	2623	5.7%
9	9A	9	2879	6.4%	117	9.3%	2996	6.5%
10	10A	9	1950	4.3%	66	5.2%	2016	4.4%
11	11A-Noon	9	2458	5.5%	110	8.7%	2568	5.5%
12	Noon	9	2810	6.2%	98	7.8%	2908	6.3%
13	1P-2P	9	2941	6.5%	87	6.9%	3028	6.5%
14	2P-3P	9	3256	7.2%	111	8.8%	3367	7.3%
15	3P	9	3334	7.4%	105	8.3%	3439	7.4%
16	4P	9	3749	8.3%	70	5.6%	3819	8.2%
17	5P	9	3756	8.3%	73	5.8%	3829	8.3%
18	6P	9	2822	6.3%	48	3.8%	2870	6.2%
19	7P	9	2188	4.9%	41	3.3%	2229	4.8%
20	8P	9	1847	4.1%	20	1.6%	1867	4.0%
21	9P	9	1372	3.0%	15	1.2%	1387	3.0%
22	10P-11P	9	858	1.9%	9	0.7%	867	1.9%
23	11P-Mid	9	485	1.1%	8	0.6%	493	1.1%
			45071	100%	1258	100%	46329	100%



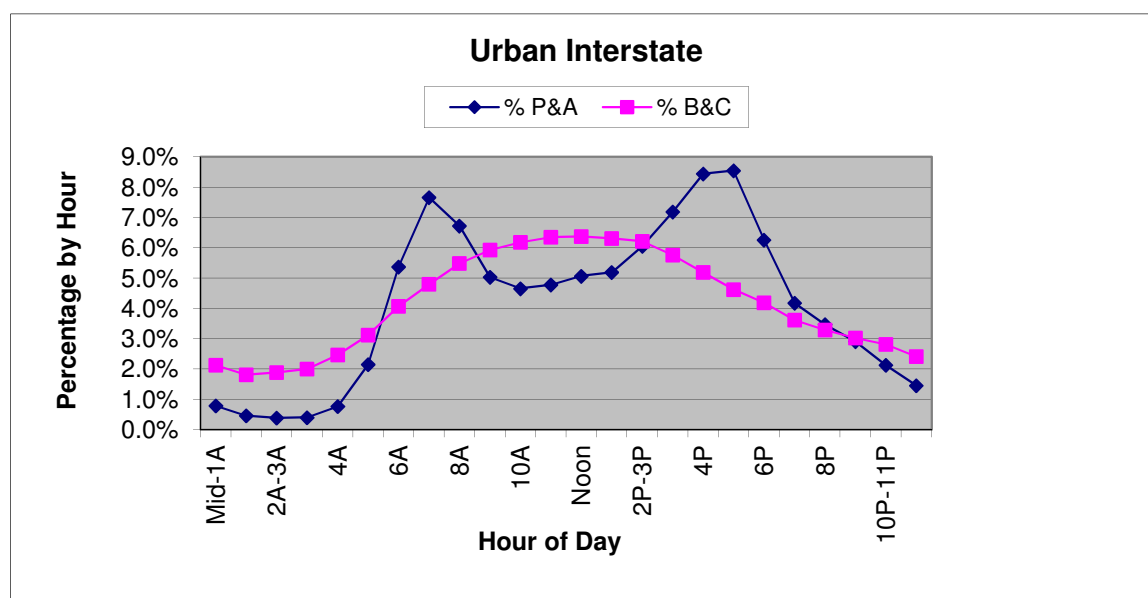
Hourly Percent by Vehicle Type

Urban Interstate

Sample = 61 Counts

Sample of Permanent ATR's and Portable Counts Taken in 2010

Hour	Hour of Day	FC	P& A (Cars)	% P&A (Cars)	B&C (Trucks)	% B&C (Trucks)	Total	% Total
0	Mid-1A	11	83590	0.8%	33348	2.1%	116938	1.0%
1	1A-2A	11	48935	0.5%	28440	1.8%	77375	0.6%
2	2A-3A	11	40947	0.4%	29478	1.9%	70425	0.6%
3	3A	11	42817	0.4%	31313	2.0%	74130	0.6%
4	4A	11	82138	0.8%	38716	2.5%	120854	1.0%
5	5A	11	229334	2.1%	48930	3.1%	278264	2.3%
6	6A	11	573985	5.4%	63847	4.1%	637832	5.2%
7	7A	11	818506	7.7%	75223	4.8%	893729	7.3%
8	8A	11	717455	6.7%	85930	5.5%	803385	6.6%
9	9A	11	536976	5.0%	92898	5.9%	629874	5.1%
10	10A	11	497362	4.7%	96966	6.2%	594328	4.9%
11	11A-Noon	11	510486	4.8%	99557	6.3%	610043	5.0%
12	Noon	11	541396	5.1%	99975	6.4%	641371	5.2%
13	1P-2P	11	553832	5.2%	98922	6.3%	652754	5.3%
14	2P-3P	11	646957	6.1%	97387	6.2%	744344	6.1%
15	3P	11	767924	7.2%	90320	5.8%	858244	7.0%
16	4P	11	901482	8.4%	81330	5.2%	982812	8.0%
17	5P	11	912659	8.5%	72500	4.6%	985159	8.0%
18	6P	11	667939	6.3%	65565	4.2%	733504	6.0%
19	7P	11	446211	4.2%	56709	3.6%	502920	4.1%
20	8P	11	370416	3.5%	51547	3.3%	421963	3.4%
21	9P	11	310282	2.9%	47392	3.0%	357674	2.9%
22	10P-11P	11	227719	2.1%	44157	2.8%	271876	2.2%
23	11P-Mid	11	155625	1.5%	37761	2.4%	193386	1.6%
			10684973	100%	1568211	100%	12253184	100%



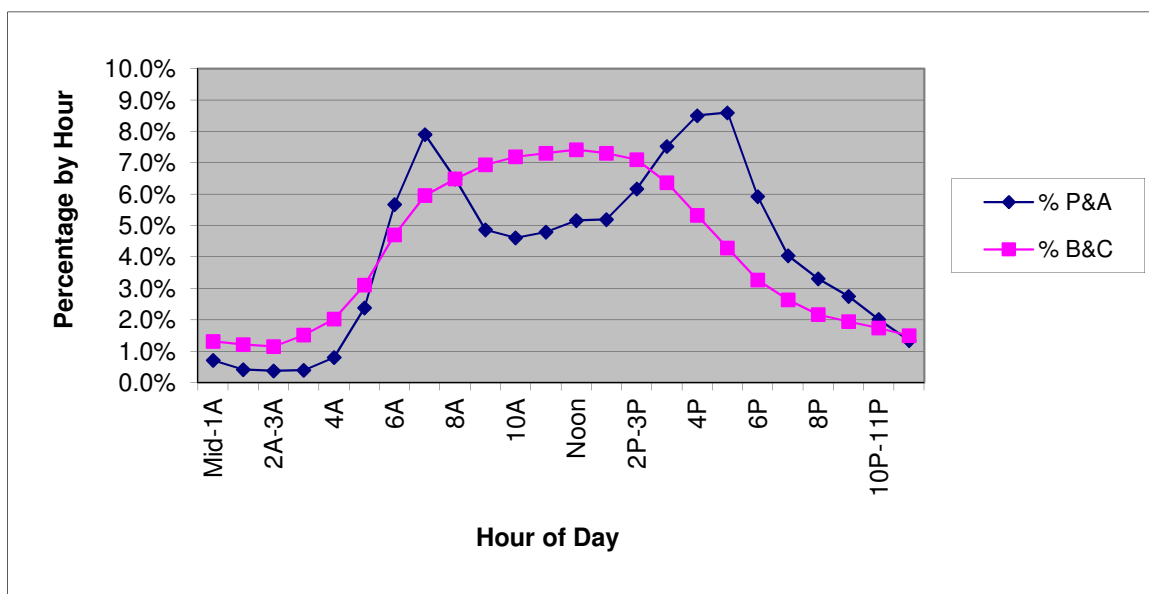
Hourly Percent by Vehicle Type

Urban Freeway and X-Way

Sample = 77 Counts

Sample of Permanent ATR's and Portable Counts Taken in 2010

Hour	Hour of Day	FC	P& A (Cars)	% P&A (Cars)	B&C (Trucks)	% B&C (Trucks)	Total	% Total
0	Mid-1A	12	26323	0.7%	3960	1.3%	30283	0.8%
1	1A-2A	12	15428	0.4%	3659	1.2%	19087	0.5%
2	2A-3A	12	13702	0.4%	3489	1.2%	17191	0.4%
3	3A	12	14420	0.4%	4595	1.5%	19015	0.5%
4	4A	12	29466	0.8%	6118	2.0%	35584	0.9%
5	5A	12	87743	2.4%	9410	3.1%	97153	2.4%
6	6A	12	209263	5.7%	14238	4.7%	223501	5.6%
7	7A	12	291576	7.9%	18044	6.0%	309620	7.8%
8	8A	12	239323	6.5%	19628	6.5%	258951	6.5%
9	9A	12	179672	4.9%	20990	6.9%	200662	5.0%
10	10A	12	170299	4.6%	21772	7.2%	192071	4.8%
11	11A-Noon	12	176916	4.8%	22108	7.3%	199024	5.0%
12	Noon	12	190381	5.2%	22452	7.4%	212833	5.3%
13	1P-2P	12	191547	5.2%	22089	7.3%	213636	5.4%
14	2P-3P	12	227727	6.2%	21470	7.1%	249197	6.2%
15	3P	12	277892	7.5%	19275	6.4%	297167	7.4%
16	4P	12	313935	8.5%	16104	5.3%	330039	8.3%
17	5P	12	317227	8.6%	12959	4.3%	330186	8.3%
18	6P	12	218736	5.9%	9877	3.3%	228613	5.7%
19	7P	12	149189	4.0%	7984	2.6%	157173	3.9%
20	8P	12	122232	3.3%	6552	2.2%	128784	3.2%
21	9P	12	101587	2.8%	5884	1.9%	107471	2.7%
22	10P-11P	12	74372	2.0%	5265	1.7%	79637	2.0%
23	11P-Mid	12	49609	1.3%	4512	1.5%	54121	1.4%
			3688565	100%	302434	100%	3990999	100%



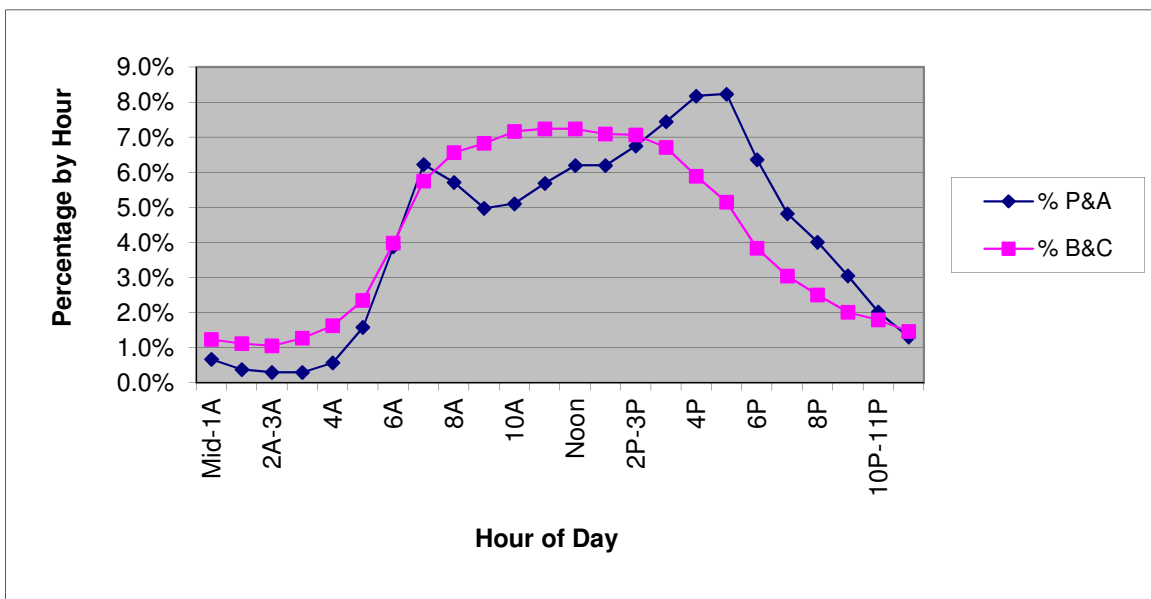
Hourly Percent by Vehicle Type

Urban Principal Arterial

Sample = 236 Counts

Sample of Permanent ATR's and Portable Counts Taken in 2010

Hour	Hour of Day	FC	P& A (Cars)	% P&A (Cars)	B&C (Trucks)	% B&C (Trucks)	Total	% Total
0	Mid-1A	14	37955	0.7%	4429	1.2%	42384	0.7%
1	1A-2A	14	21412	0.4%	4003	1.1%	25415	0.4%
2	2A-3A	14	16930	0.3%	3754	1.1%	20684	0.3%
3	3A	14	16856	0.3%	4550	1.3%	21406	0.4%
4	4A	14	32058	0.6%	5818	1.6%	37876	0.6%
5	5A	14	88981	1.6%	8411	2.4%	97392	1.6%
6	6A	14	218771	3.9%	14238	4.0%	233009	3.9%
7	7A	14	350464	6.2%	20549	5.8%	371013	6.2%
8	8A	14	321665	5.7%	23461	6.6%	345126	5.8%
9	9A	14	280497	5.0%	24406	6.8%	304903	5.1%
10	10A	14	287735	5.1%	25591	7.2%	313326	5.2%
11	11A-Noon	14	320144	5.7%	25853	7.2%	345997	5.8%
12	Noon	14	349184	6.2%	25864	7.2%	375048	6.3%
13	1P-2P	14	349306	6.2%	25352	7.1%	374658	6.3%
14	2P-3P	14	380322	6.8%	25228	7.1%	405550	6.8%
15	3P	14	419660	7.5%	23978	6.7%	443638	7.4%
16	4P	14	460670	8.2%	21043	5.9%	481713	8.0%
17	5P	14	463488	8.2%	18400	5.2%	481888	8.0%
18	6P	14	358366	6.4%	13720	3.8%	372086	6.2%
19	7P	14	271311	4.8%	10862	3.0%	282173	4.7%
20	8P	14	225902	4.0%	8944	2.5%	234846	3.9%
21	9P	14	172052	3.1%	7180	2.0%	179232	3.0%
22	10P-11P	14	113967	2.0%	6400	1.8%	120367	2.0%
23	11P-Mid	14	73975	1.3%	5220	1.5%	79195	1.3%
			5631671	100%	357254	100%	5988925	100%



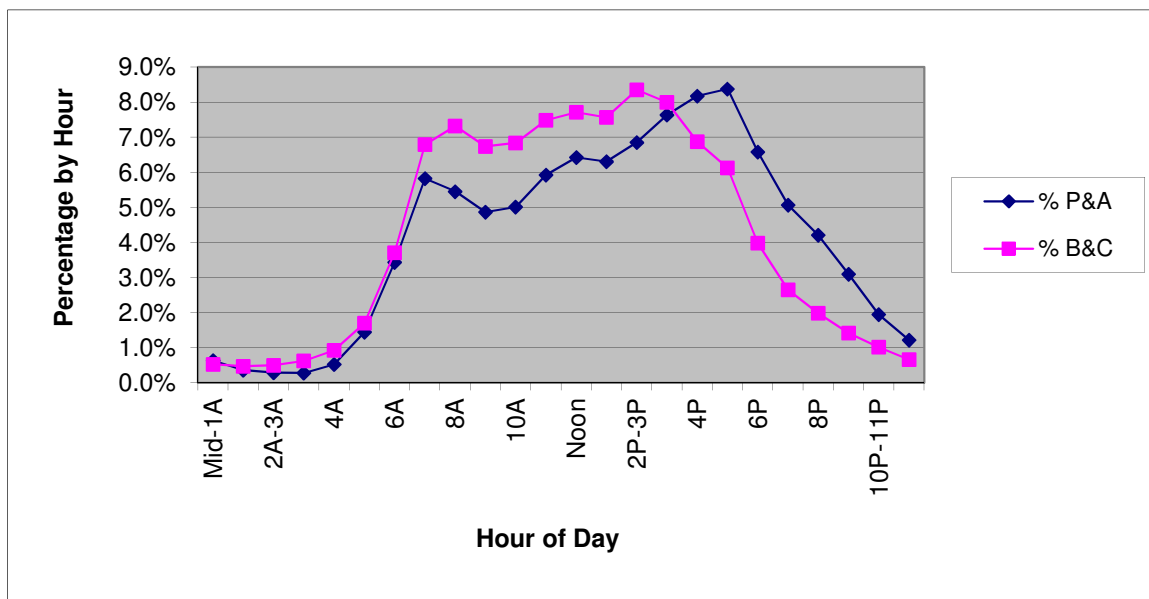
Hourly Percent by Vehicle Type

Urban Minor Arterial

Sample = 341 Counts

Sample of Permanent ATR's and Portable Counts Taken in 2010

Hour	Hour of Day	FC	P& A (Cars)	% P&A (Cars)	B&C (Trucks)	% B&C (Trucks)	Total	% Total
0	Mid-1A	16	25709	0.6%	858	0.5%	26567	0.6%
1	1A-2A	16	14827	0.4%	767	0.5%	15594	0.4%
2	2A-3A	16	11828	0.3%	806	0.5%	12634	0.3%
3	3A	16	11344	0.3%	1018	0.6%	12362	0.3%
4	4A	16	21200	0.5%	1508	0.9%	22708	0.5%
5	5A	16	58846	1.5%	2755	1.7%	61601	1.5%
6	6A	16	139564	3.4%	6023	3.7%	145587	3.5%
7	7A	16	236243	5.8%	11017	6.8%	247260	5.9%
8	8A	16	221373	5.5%	11881	7.3%	233254	5.5%
9	9A	16	197524	4.9%	10935	6.7%	208459	4.9%
10	10A	16	203326	5.0%	11097	6.8%	214423	5.1%
11	11A-Noon	16	240572	5.9%	12144	7.5%	252716	6.0%
12	Noon	16	260959	6.4%	12507	7.7%	273466	6.5%
13	1P-2P	16	255978	6.3%	12270	7.6%	268248	6.4%
14	2P-3P	16	278333	6.9%	13554	8.4%	291887	6.9%
15	3P	16	310129	7.6%	12976	8.0%	323105	7.7%
16	4P	16	331794	8.2%	11145	6.9%	342939	8.1%
17	5P	16	339879	8.4%	9936	6.1%	349815	8.3%
18	6P	16	266978	6.6%	6455	4.0%	273433	6.5%
19	7P	16	205707	5.1%	4298	2.6%	210005	5.0%
20	8P	16	171020	4.2%	3224	2.0%	174244	4.1%
21	9P	16	125698	3.1%	2299	1.4%	127997	3.0%
22	10P-11P	16	79170	2.0%	1656	1.0%	80826	1.9%
23	11P-Mid	16	49627	1.2%	1074	0.7%	50701	1.2%
			4057628	100%	162203	100%	4219831	100%



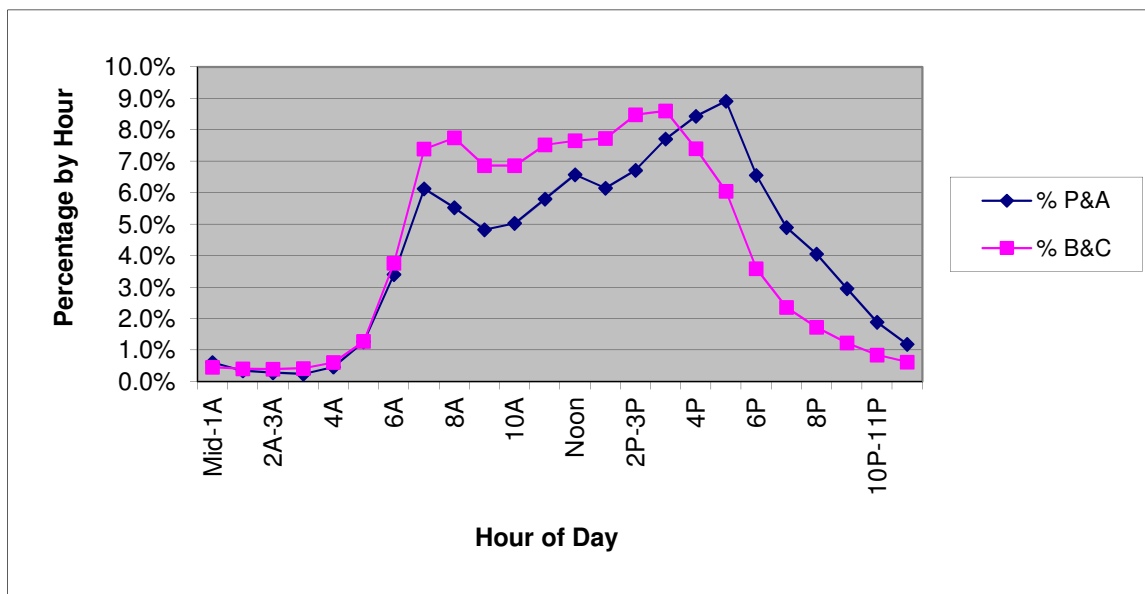
Hourly Percent by Vehicle Type

Urban Collector

Sample = 175 Counts

Sample of Permanent ATR's and Portable Counts Taken in 2010

Hour	Hour of Day	FC	P& A (Cars)	% P&A (Cars)	B&C (Trucks)	% B&C (Trucks)	Total	% Total
0	Mid-1A	17	8350	0.6%	225	0.5%	8575	0.6%
1	1A-2A	17	4767	0.3%	198	0.4%	4965	0.4%
2	2A-3A	17	3885	0.3%	196	0.4%	4081	0.3%
3	3A	17	3347	0.2%	207	0.4%	3554	0.3%
4	4A	17	6394	0.5%	299	0.6%	6693	0.5%
5	5A	17	17315	1.3%	630	1.3%	17945	1.3%
6	6A	17	46588	3.4%	1850	3.8%	48438	3.4%
7	7A	17	83859	6.1%	3639	7.4%	87498	6.2%
8	8A	17	75673	5.5%	3815	7.8%	79488	5.6%
9	9A	17	66040	4.8%	3378	6.9%	69418	4.9%
10	10A	17	68795	5.0%	3377	6.9%	72172	5.1%
11	11A-Noon	17	79417	5.8%	3702	7.5%	83119	5.9%
12	Noon	17	90033	6.6%	3769	7.7%	93802	6.6%
13	1P-2P	17	84139	6.1%	3804	7.7%	87943	6.2%
14	2P-3P	17	91895	6.7%	4173	8.5%	96068	6.8%
15	3P	17	105575	7.7%	4234	8.6%	109809	7.7%
16	4P	17	115466	8.4%	3641	7.4%	119107	8.4%
17	5P	17	121993	8.9%	2977	6.0%	124970	8.8%
18	6P	17	89693	6.6%	1766	3.6%	91459	6.5%
19	7P	17	66981	4.9%	1161	2.4%	68142	4.8%
20	8P	17	55462	4.1%	849	1.7%	56311	4.0%
21	9P	17	40509	3.0%	605	1.2%	41114	2.9%
22	10P-11P	17	25902	1.9%	417	0.8%	26319	1.9%
23	11P-Mid	17	16308	1.2%	307	0.6%	16615	1.2%
			1368386	100%	49219	100%	1417605	100%



Hourly Percent by Vehicle Type

Urban Local

Sample = 4 Counts

Sample of Permanent ATR's and Portable Counts Taken in 2010

Hour	Hour of Day	FC	P& A (Cars)	% P&A (Cars)	B&C (Trucks)	% B&C (Trucks)	Total	% Total
0	Mid-1A	19	67	0.4%	2	0.2%	69	0.4%
1	1A-2A	19	52	0.3%	5	0.4%	57	0.3%
2	2A-3A	19	48	0.3%	2	0.2%	50	0.3%
3	3A	19	42	0.2%	4	0.3%	46	0.3%
4	4A	19	116	0.7%	4	0.3%	120	0.7%
5	5A	19	307	1.8%	10	0.8%	317	1.7%
6	6A	19	658	3.8%	50	3.8%	708	3.8%
7	7A	19	903	5.3%	102	7.8%	1005	5.5%
8	8A	19	915	5.4%	119	9.1%	1034	5.6%
9	9A	19	1050	6.1%	160	12.3%	1210	6.6%
10	10A	19	1239	7.2%	132	10.1%	1371	7.5%
11	11A-Noon	19	1067	6.2%	142	10.9%	1209	6.6%
12	Noon	19	987	5.8%	133	10.2%	1120	6.1%
13	1P-2P	19	976	5.7%	149	11.4%	1125	6.1%
14	2P-3P	19	1128	6.6%	122	9.4%	1250	6.8%
15	3P	19	1282	7.5%	82	6.3%	1364	7.4%
16	4P	19	1412	8.3%	30	2.3%	1442	7.8%
17	5P	19	1449	8.5%	17	1.3%	1466	8.0%
18	6P	19	1003	5.9%	8	0.6%	1011	5.5%
19	7P	19	802	4.7%	12	0.9%	814	4.4%
20	8P	19	732	4.3%	4	0.3%	736	4.0%
21	9P	19	412	2.4%	4	0.3%	416	2.3%
22	10P-11P	19	269	1.6%	4	0.3%	273	1.5%
23	11P-Mid	19	180	1.1%	5	0.4%	185	1.0%
			17096	100%	1302	100%	18398	100%

