

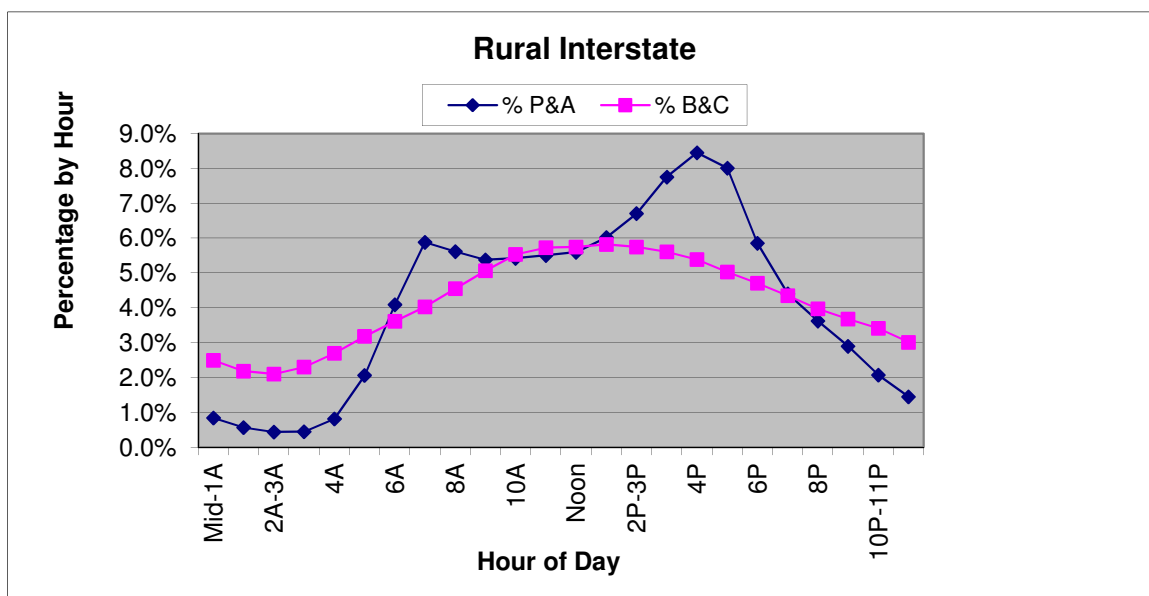
Hourly Percent by Vehicle Type

Rural Interstate

Sample = 20 Counts

Sample of Permanent ATR's and Portable Counts Taken in 2011

Hour	Hour of Day	FC	P& A (Cars)	% P&A (Cars)	B&C (Trucks)	% B&C (Trucks)	Total	% Total
0	Mid-1A	1	27402	0.8%	37884	2.5%	65286	1.4%
1	1A-2A	1	18585	0.6%	33079	2.2%	51664	1.1%
2	2A-3A	1	14213	0.4%	31915	2.1%	46128	1.0%
3	3A	1	14547	0.4%	34873	2.3%	49420	1.0%
4	4A	1	26517	0.8%	40916	2.7%	67433	1.4%
5	5A	1	67041	2.1%	48280	3.2%	115321	2.4%
6	6A	1	133003	4.1%	54769	3.6%	187772	3.9%
7	7A	1	191175	5.9%	61058	4.0%	252233	5.3%
8	8A	1	182447	5.6%	69012	4.6%	251459	5.3%
9	9A	1	174848	5.4%	76734	5.1%	251582	5.3%
10	10A	1	176295	5.4%	83852	5.5%	260147	5.5%
11	11A-Noon	1	178934	5.5%	86764	5.7%	265698	5.6%
12	Noon	1	181959	5.6%	87143	5.8%	269102	5.7%
13	1P-2P	1	195636	6.0%	88198	5.8%	283834	6.0%
14	2P-3P	1	218020	6.7%	87082	5.7%	305102	6.4%
15	3P	1	252085	7.8%	85032	5.6%	337117	7.1%
16	4P	1	274709	8.5%	81671	5.4%	356380	7.5%
17	5P	1	260265	8.0%	76280	5.0%	336545	7.1%
18	6P	1	190179	5.9%	71359	4.7%	261538	5.5%
19	7P	1	143134	4.4%	65962	4.4%	209096	4.4%
20	8P	1	117652	3.6%	60259	4.0%	177911	3.7%
21	9P	1	94344	2.9%	55804	3.7%	150148	3.2%
22	10P-11P	1	67361	2.1%	51733	3.4%	119094	2.5%
23	11P-Mid	1	47132	1.5%	45704	3.0%	92836	1.9%
			3247483	100%	1515363	100%	4762846	100%



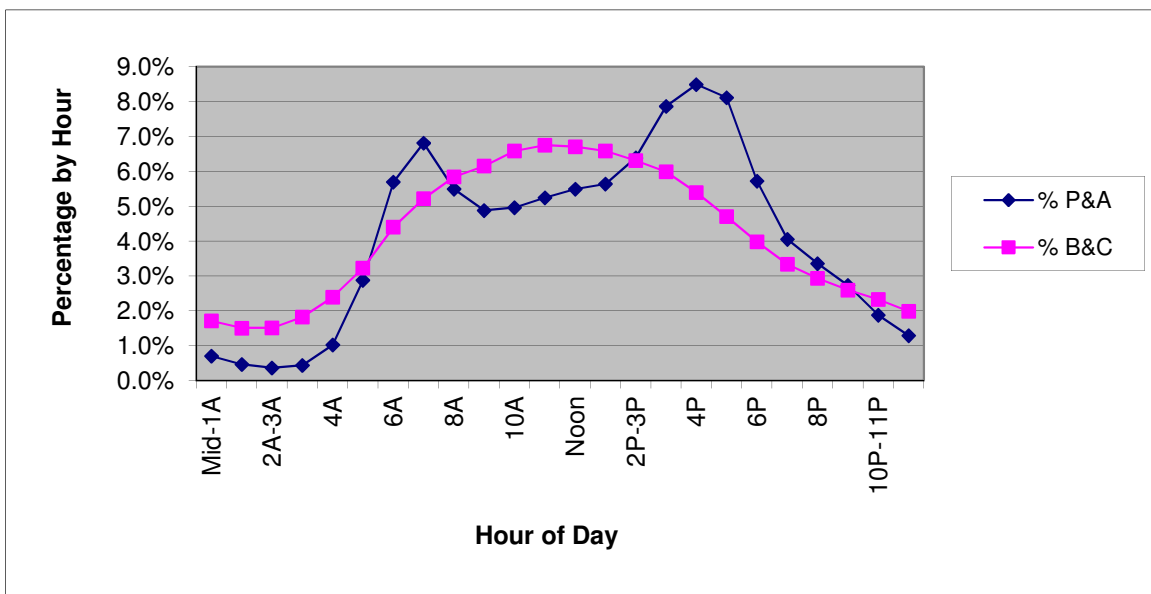
Hourly Percent by Vehicle Type

Rural Principal Arterial

Sample = 211 Counts

Sample of Permanent ATR's and Portable Counts Taken in 2011

Hour	Hour of Day	FC	P& A (Cars)	% P&A (Cars)	B&C (Trucks)	% B&C (Trucks)	Total	% Total
0	Mid-1A	2	27387	0.7%	13590	1.7%	40977	0.9%
1	1A-2A	2	18006	0.5%	11936	1.5%	29942	0.6%
2	2A-3A	2	14194	0.4%	11993	1.5%	26187	0.6%
3	3A	2	16878	0.4%	14458	1.8%	31336	0.7%
4	4A	2	39670	1.0%	18920	2.4%	58590	1.3%
5	5A	2	111561	2.9%	25547	3.2%	137108	2.9%
6	6A	2	220625	5.7%	34856	4.4%	255481	5.5%
7	7A	2	263936	6.8%	41313	5.2%	305249	6.5%
8	8A	2	212838	5.5%	46258	5.8%	259096	5.6%
9	9A	2	188943	4.9%	48764	6.2%	237707	5.1%
10	10A	2	192267	5.0%	52180	6.6%	244447	5.2%
11	11A-Noon	2	203106	5.2%	53447	6.7%	256553	5.5%
12	Noon	2	212928	5.5%	53120	6.7%	266048	5.7%
13	1P-2P	2	218481	5.6%	52169	6.6%	270650	5.8%
14	2P-3P	2	247560	6.4%	49965	6.3%	297525	6.4%
15	3P	2	305058	7.9%	47441	6.0%	352499	7.6%
16	4P	2	329097	8.5%	42731	5.4%	371828	8.0%
17	5P	2	314309	8.1%	37289	4.7%	351598	7.5%
18	6P	2	221587	5.7%	31513	4.0%	253100	5.4%
19	7P	2	157044	4.1%	26454	3.3%	183498	3.9%
20	8P	2	130090	3.4%	23239	2.9%	153329	3.3%
21	9P	2	105752	2.7%	20583	2.6%	126335	2.7%
22	10P-11P	2	72768	1.9%	18450	2.3%	91218	2.0%
23	11P-Mid	2	49868	1.3%	15728	2.0%	65596	1.4%
			3873953	100%	791944	100%	4665897	100%



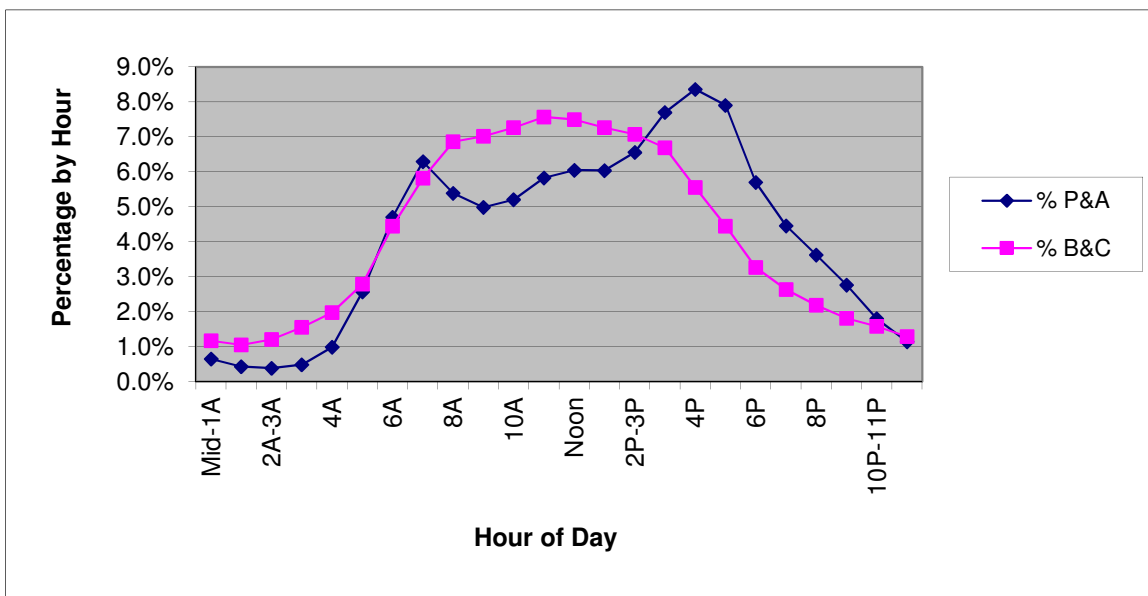
Hourly Percent by Vehicle Type

Rural Minor Arterial

Sample = 321 Counts

Sample of Permanent ATR's and Portable Counts Taken in 2011

Hour	Hour of Day	FC	P& A (Cars)	% P&A (Cars)	B&C (Trucks)	% B&C (Trucks)	Total	% Total
0	Mid-1A	6	11817	0.6%	2229	1.2%	14046	0.7%
1	1A-2A	6	7761	0.4%	2010	1.1%	9771	0.5%
2	2A-3A	6	7031	0.4%	2301	1.2%	9332	0.5%
3	3A	6	8782	0.5%	2968	1.6%	11750	0.6%
4	4A	6	17909	1.0%	3770	2.0%	21679	1.1%
5	5A	6	46719	2.6%	5327	2.8%	52046	2.6%
6	6A	6	85632	4.7%	8487	4.4%	94119	4.7%
7	7A	6	114484	6.3%	11112	5.8%	125596	6.2%
8	8A	6	98016	5.4%	13098	6.9%	111114	5.5%
9	9A	6	90789	5.0%	13395	7.0%	104184	5.2%
10	10A	6	94686	5.2%	13880	7.3%	108566	5.4%
11	11A-Noon	6	105980	5.8%	14454	7.6%	120434	6.0%
12	Noon	6	110108	6.1%	14304	7.5%	124412	6.2%
13	1P-2P	6	109832	6.0%	13865	7.3%	123697	6.2%
14	2P-3P	6	119432	6.6%	13503	7.1%	132935	6.6%
15	3P	6	140165	7.7%	12770	6.7%	152935	7.6%
16	4P	6	152090	8.4%	10612	5.6%	162702	8.1%
17	5P	6	143833	7.9%	8499	4.5%	152332	7.6%
18	6P	6	103779	5.7%	6231	3.3%	110010	5.5%
19	7P	6	81017	4.5%	5026	2.6%	86043	4.3%
20	8P	6	65891	3.6%	4181	2.2%	70072	3.5%
21	9P	6	50250	2.8%	3459	1.8%	53709	2.7%
22	10P-11P	6	32790	1.8%	3028	1.6%	35818	1.8%
23	11P-Mid	6	20853	1.1%	2457	1.3%	23310	1.2%
			1819646	100%	190966	100%	2010612	100%



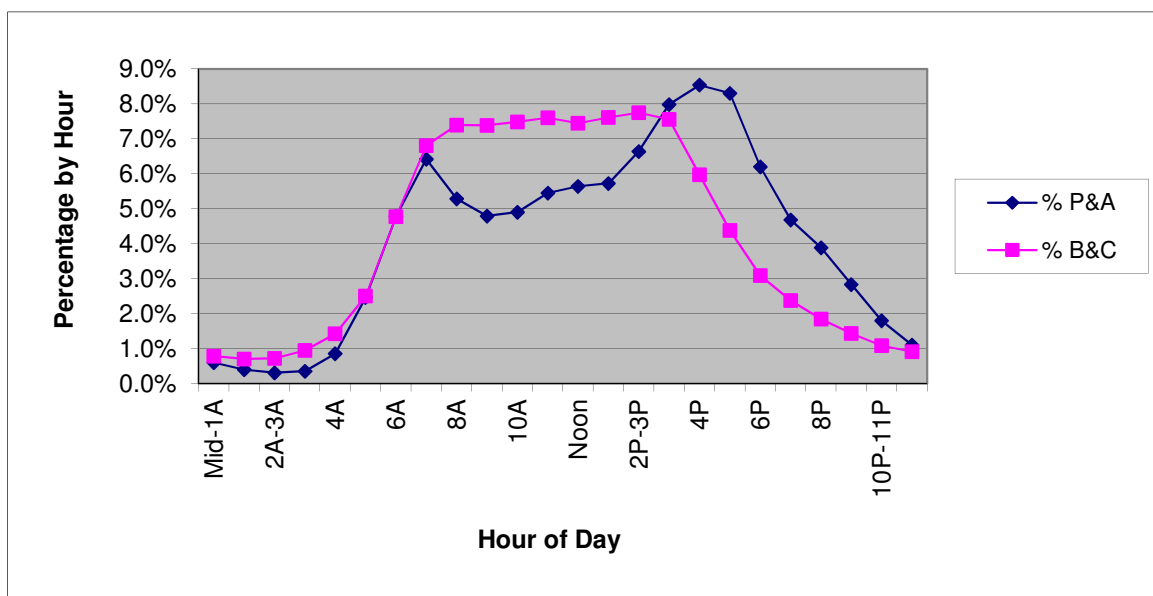
Hourly Percent by Vehicle Type

Rural Major Collector

Sample = 838 Counts

Sample of Permanent ATR's and Portable Counts Taken in 2011

Hour	Hour of Day	FC	P& A (Cars)	% P&A (Cars)	B&C (Trucks)	% B&C (Trucks)	Total	% Total
0	Mid-1A	7	16230	0.6%	1545	0.8%	17775	0.6%
1	1A-2A	7	10699	0.4%	1382	0.7%	12081	0.4%
2	2A-3A	7	8340	0.3%	1418	0.7%	9758	0.3%
3	3A	7	9595	0.4%	1858	0.9%	11453	0.4%
4	4A	7	23069	0.9%	2784	1.4%	25853	0.9%
5	5A	7	66263	2.5%	4895	2.5%	71158	2.5%
6	6A	7	128458	4.8%	9344	4.8%	137802	4.8%
7	7A	7	172588	6.4%	13321	6.8%	185909	6.4%
8	8A	7	142142	5.3%	14455	7.4%	156597	5.4%
9	9A	7	128800	4.8%	14443	7.4%	143243	5.0%
10	10A	7	131695	4.9%	14646	7.5%	146341	5.1%
11	11A-Noon	7	146565	5.5%	14883	7.6%	161448	5.6%
12	Noon	7	151641	5.6%	14567	7.4%	166208	5.8%
13	1P-2P	7	153841	5.7%	14893	7.6%	168734	5.9%
14	2P-3P	7	178367	6.6%	15156	7.7%	193523	6.7%
15	3P	7	214624	8.0%	14795	7.6%	229419	8.0%
16	4P	7	229502	8.5%	11681	6.0%	241183	8.4%
17	5P	7	223196	8.3%	8576	4.4%	231772	8.0%
18	6P	7	166619	6.2%	6044	3.1%	172663	6.0%
19	7P	7	125927	4.7%	4645	2.4%	130572	4.5%
20	8P	7	104547	3.9%	3609	1.8%	108156	3.8%
21	9P	7	76221	2.8%	2801	1.4%	79022	2.7%
22	10P-11P	7	48341	1.8%	2126	1.1%	50467	1.8%
23	11P-Mid	7	29801	1.1%	1786	0.9%	31587	1.1%
			2687071	100%	195653	100%	2882724	100%



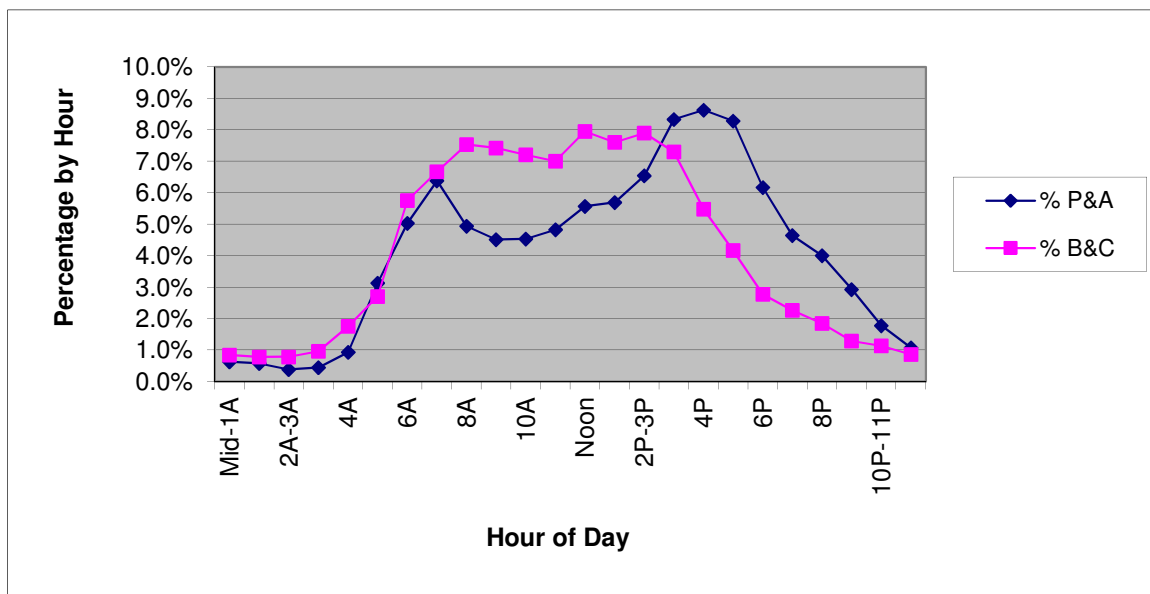
Hourly Percent by Vehicle Type

Rural Minor Collector

Sample = 101 Counts

Sample of Permanent ATR's and Portable Counts Taken in 2011

Hour	Hour of Day	FC	P& A (Cars)	% P&A (Cars)	B&C (Trucks)	% B&C (Trucks)	Total	% Total
0	Mid-1A	8	1255	0.6%	145	0.8%	1400	0.6%
1	1A-2A	8	1149	0.6%	135	0.8%	1284	0.6%
2	2A-3A	8	767	0.4%	136	0.8%	903	0.4%
3	3A	8	887	0.4%	166	1.0%	1053	0.5%
4	4A	8	1861	0.9%	304	1.8%	2165	1.0%
5	5A	8	6264	3.1%	468	2.7%	6732	3.1%
6	6A	8	10052	5.0%	994	5.8%	11046	5.1%
7	7A	8	12757	6.4%	1153	6.7%	13910	6.4%
8	8A	8	9871	4.9%	1302	7.5%	11173	5.1%
9	9A	8	9013	4.5%	1283	7.4%	10296	4.7%
10	10A	8	9062	4.5%	1246	7.2%	10308	4.7%
11	11A-Noon	8	9651	4.8%	1211	7.0%	10862	5.0%
12	Noon	8	11131	5.6%	1375	8.0%	12506	5.8%
13	1P-2P	8	11367	5.7%	1315	7.6%	12682	5.8%
14	2P-3P	8	13075	6.5%	1366	7.9%	14441	6.7%
15	3P	8	16662	8.3%	1262	7.3%	17924	8.3%
16	4P	8	17247	8.6%	947	5.5%	18194	8.4%
17	5P	8	16566	8.3%	720	4.2%	17286	8.0%
18	6P	8	12332	6.2%	479	2.8%	12811	5.9%
19	7P	8	9289	4.6%	391	2.3%	9680	4.5%
20	8P	8	8005	4.0%	319	1.8%	8324	3.8%
21	9P	8	5859	2.9%	223	1.3%	6082	2.8%
22	10P-11P	8	3563	1.8%	197	1.1%	3760	1.7%
23	11P-Mid	8	2159	1.1%	149	0.9%	2308	1.1%
			199844	100%	17286	100%	217130	100%



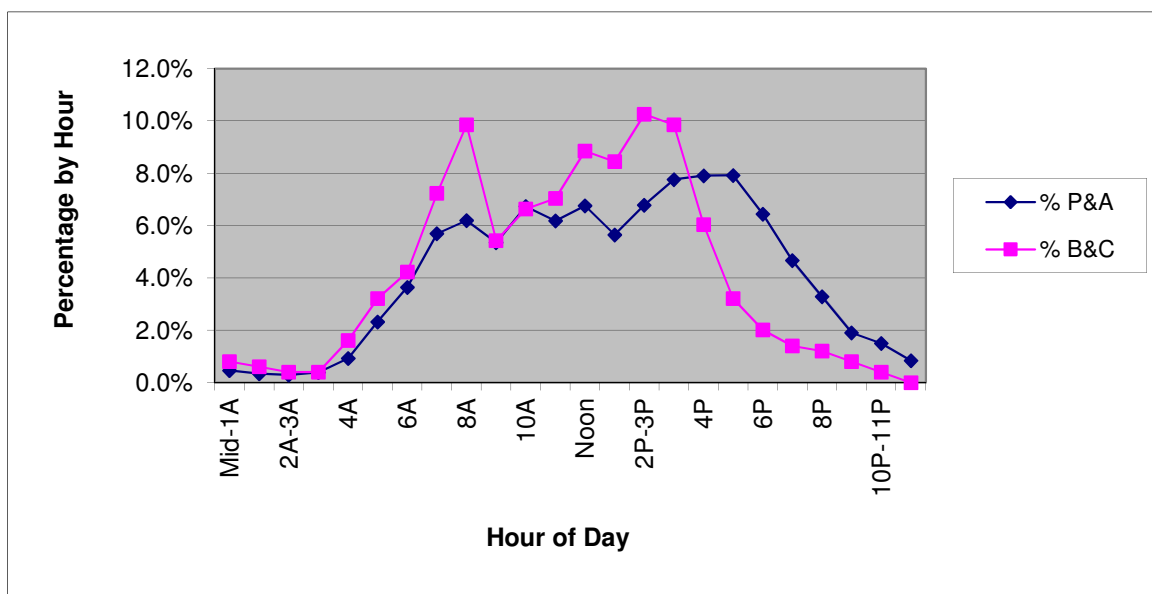
Hourly Percent by Vehicle Type

Rural Local

Sample = 5 Counts

Sample of Permanent ATR's and Portable Counts Taken in 2011

Hour	Hour of Day	FC	P& A (Cars)	% P&A (Cars)	B&C (Trucks)	% B&C (Trucks)	Total	% Total
0	Mid-1A	9	41	0.5%	4	0.8%	45	0.5%
1	1A-2A	9	30	0.3%	3	0.6%	33	0.4%
2	2A-3A	9	26	0.3%	2	0.4%	28	0.3%
3	3A	9	34	0.4%	2	0.4%	36	0.4%
4	4A	9	82	0.9%	8	1.6%	90	1.0%
5	5A	9	206	2.3%	16	3.2%	222	2.4%
6	6A	9	323	3.6%	21	4.2%	344	3.7%
7	7A	9	504	5.7%	36	7.2%	540	5.8%
8	8A	9	549	6.2%	49	9.9%	598	6.4%
9	9A	9	474	5.4%	27	5.4%	501	5.4%
10	10A	9	597	6.7%	33	6.6%	630	6.7%
11	11A-Noon	9	548	6.2%	35	7.0%	583	6.2%
12	Noon	9	599	6.8%	44	8.9%	643	6.9%
13	1P-2P	9	500	5.6%	42	8.5%	542	5.8%
14	2P-3P	9	601	6.8%	51	10.3%	652	7.0%
15	3P	9	687	7.8%	49	9.9%	736	7.9%
16	4P	9	700	7.9%	30	6.0%	730	7.8%
17	5P	9	702	7.9%	16	3.2%	718	7.7%
18	6P	9	570	6.4%	10	2.0%	580	6.2%
19	7P	9	413	4.7%	7	1.4%	420	4.5%
20	8P	9	291	3.3%	6	1.2%	297	3.2%
21	9P	9	169	1.9%	4	0.8%	173	1.9%
22	10P-11P	9	133	1.5%	2	0.4%	135	1.4%
23	11P-Mid	9	74	0.8%	0	0.0%	74	0.8%
			8853	100%	497	100%	9350	100%



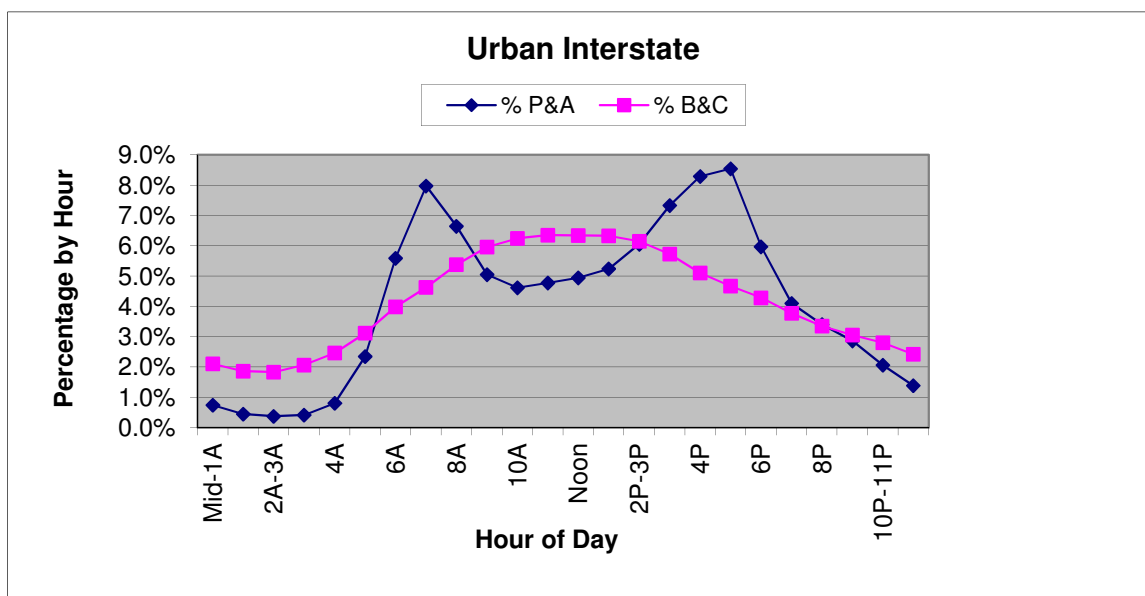
Hourly Percent by Vehicle Type

Urban Interstate

Sample = 31 Counts

Sample of Permanent ATR's and Portable Counts Taken in 2011

Hour	Hour of Day	FC	P& A (Cars)	% P&A (Cars)	B&C (Trucks)	% B&C (Trucks)	Total	% Total
0	Mid-1A	11	108347	0.7%	44766	2.1%	153113	0.9%
1	1A-2A	11	64860	0.4%	39772	1.9%	104632	0.6%
2	2A-3A	11	54550	0.4%	39009	1.8%	93559	0.6%
3	3A	11	60779	0.4%	44049	2.1%	104828	0.6%
4	4A	11	117019	0.8%	52464	2.5%	169483	1.0%
5	5A	11	340288	2.3%	66339	3.1%	406627	2.4%
6	6A	11	811271	5.6%	84929	4.0%	896200	5.4%
7	7A	11	1158335	8.0%	98540	4.6%	1256875	7.5%
8	8A	11	965018	6.6%	114637	5.4%	1079655	6.5%
9	9A	11	733210	5.0%	127001	6.0%	860211	5.2%
10	10A	11	669824	4.6%	132993	6.2%	802817	4.8%
11	11A-Noon	11	693175	4.8%	135163	6.3%	828338	5.0%
12	Noon	11	718430	4.9%	134994	6.3%	853424	5.1%
13	1P-2P	11	760380	5.2%	134703	6.3%	895083	5.4%
14	2P-3P	11	879731	6.1%	131038	6.2%	1010769	6.1%
15	3P	11	1064858	7.3%	122045	5.7%	1186903	7.1%
16	4P	11	1204354	8.3%	108626	5.1%	1312980	7.9%
17	5P	11	1241434	8.6%	99561	4.7%	1340995	8.1%
18	6P	11	867315	6.0%	91283	4.3%	958598	5.8%
19	7P	11	594798	4.1%	80309	3.8%	675107	4.1%
20	8P	11	493538	3.4%	71287	3.3%	564825	3.4%
21	9P	11	416060	2.9%	65096	3.1%	481156	2.9%
22	10P-11P	11	300062	2.1%	59730	2.8%	359792	2.2%
23	11P-Mid	11	201431	1.4%	51634	2.4%	253065	1.5%
			14519067	100%	2129968	100%	16649035	100%



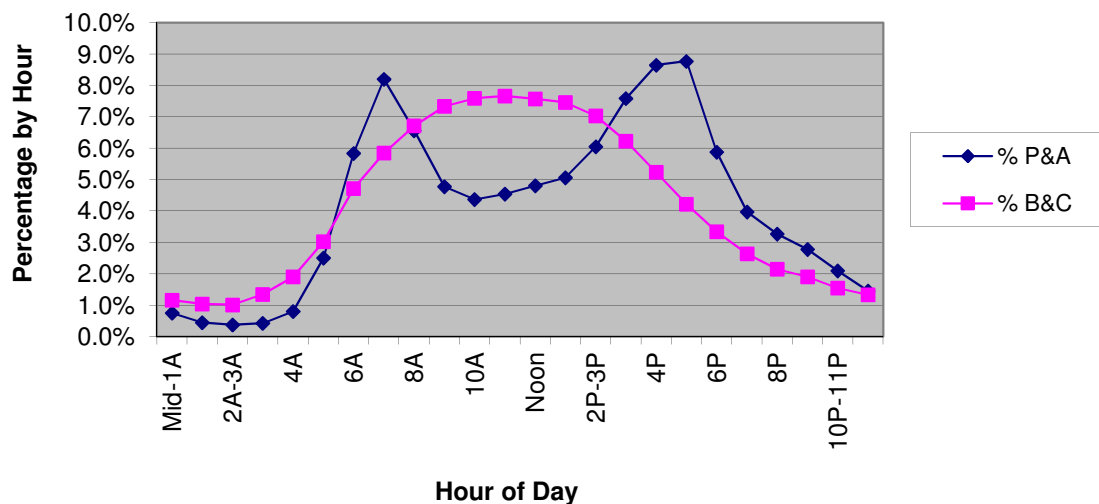
Hourly Percent by Vehicle Type

Urban Freeway and X-Way

Sample = 49 Counts

Sample of Permanent ATR's and Portable Counts Taken in 2011

Hour	Hour of Day	FC	P& A (Cars)	% P&A (Cars)	B&C (Trucks)	% B&C (Trucks)	Total	% Total
0	Mid-1A	12	40123	0.7%	4320	1.2%	44443	0.8%
1	1A-2A	12	23979	0.4%	3858	1.0%	27837	0.5%
2	2A-3A	12	20213	0.4%	3774	1.0%	23987	0.4%
3	3A	12	22620	0.4%	5027	1.3%	27647	0.5%
4	4A	12	42782	0.8%	7091	1.9%	49873	0.9%
5	5A	12	134524	2.5%	11277	3.0%	145801	2.5%
6	6A	12	313074	5.8%	17611	4.7%	330685	5.8%
7	7A	12	439580	8.2%	21822	5.9%	461402	8.0%
8	8A	12	351721	6.6%	25048	6.7%	376769	6.6%
9	9A	12	255941	4.8%	27377	7.3%	283318	4.9%
10	10A	12	234470	4.4%	28314	7.6%	262784	4.6%
11	11A-Noon	12	243818	4.5%	28582	7.7%	272400	4.8%
12	Noon	12	257824	4.8%	28260	7.6%	286084	5.0%
13	1P-2P	12	271526	5.1%	27812	7.5%	299338	5.2%
14	2P-3P	12	324582	6.1%	26237	7.0%	350819	6.1%
15	3P	12	406793	7.6%	23205	6.2%	429998	7.5%
16	4P	12	463964	8.7%	19521	5.2%	483485	8.4%
17	5P	12	470382	8.8%	15719	4.2%	486101	8.5%
18	6P	12	315113	5.9%	12453	3.3%	327566	5.7%
19	7P	12	213244	4.0%	9824	2.6%	223068	3.9%
20	8P	12	175374	3.3%	8004	2.1%	183378	3.2%
21	9P	12	149007	2.8%	7108	1.9%	156115	2.7%
22	10P-11P	12	112620	2.1%	5768	1.5%	118388	2.1%
23	11P-Mid	12	77763	1.5%	4967	1.3%	82730	1.4%
			5361037	100%	372979	100%	5734016	100%



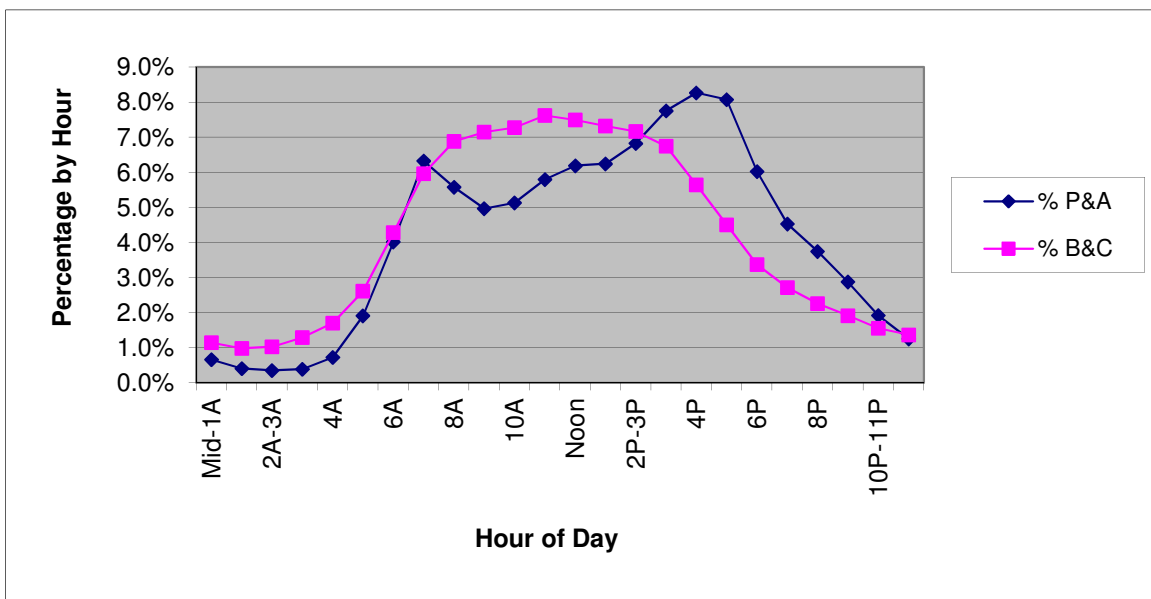
Hourly Percent by Vehicle Type

Urban Principal Arterial

Sample = 186 Counts

Sample of Permanent ATR's and Portable Counts Taken in 2011

Hour	Hour of Day	FC	P& A (Cars)	% P&A (Cars)	B&C (Trucks)	% B&C (Trucks)	Total	% Total
0	Mid-1A	14	31141	0.7%	3557	1.1%	34698	0.7%
1	1A-2A	14	19023	0.4%	3046	1.0%	22069	0.4%
2	2A-3A	14	16500	0.4%	3197	1.0%	19697	0.4%
3	3A	14	18150	0.4%	4011	1.3%	22161	0.4%
4	4A	14	33946	0.7%	5297	1.7%	39243	0.8%
5	5A	14	89450	1.9%	8145	2.6%	97595	2.0%
6	6A	14	188244	4.0%	13346	4.3%	201590	4.0%
7	7A	14	296397	6.3%	18554	6.0%	314951	6.3%
8	8A	14	261405	5.6%	21434	6.9%	282839	5.7%
9	9A	14	232566	5.0%	22264	7.2%	254830	5.1%
10	10A	14	240166	5.1%	22657	7.3%	262823	5.3%
11	11A-Noon	14	271425	5.8%	23720	7.6%	295145	5.9%
12	Noon	14	290073	6.2%	23332	7.5%	313405	6.3%
13	1P-2P	14	292616	6.2%	22801	7.3%	315417	6.3%
14	2P-3P	14	319598	6.8%	22320	7.2%	341918	6.8%
15	3P	14	363279	7.8%	20990	6.7%	384269	7.7%
16	4P	14	387359	8.3%	17569	5.6%	404928	8.1%
17	5P	14	378207	8.1%	14032	4.5%	392239	7.9%
18	6P	14	282109	6.0%	10489	3.4%	292598	5.9%
19	7P	14	212318	4.5%	8457	2.7%	220775	4.4%
20	8P	14	175541	3.7%	7026	2.3%	182567	3.7%
21	9P	14	134751	2.9%	5968	1.9%	140719	2.8%
22	10P-11P	14	89913	1.9%	4858	1.6%	94771	1.9%
23	11P-Mid	14	58773	1.3%	4264	1.4%	63037	1.3%
			4682950	100%	311334	100%	4994284	100%



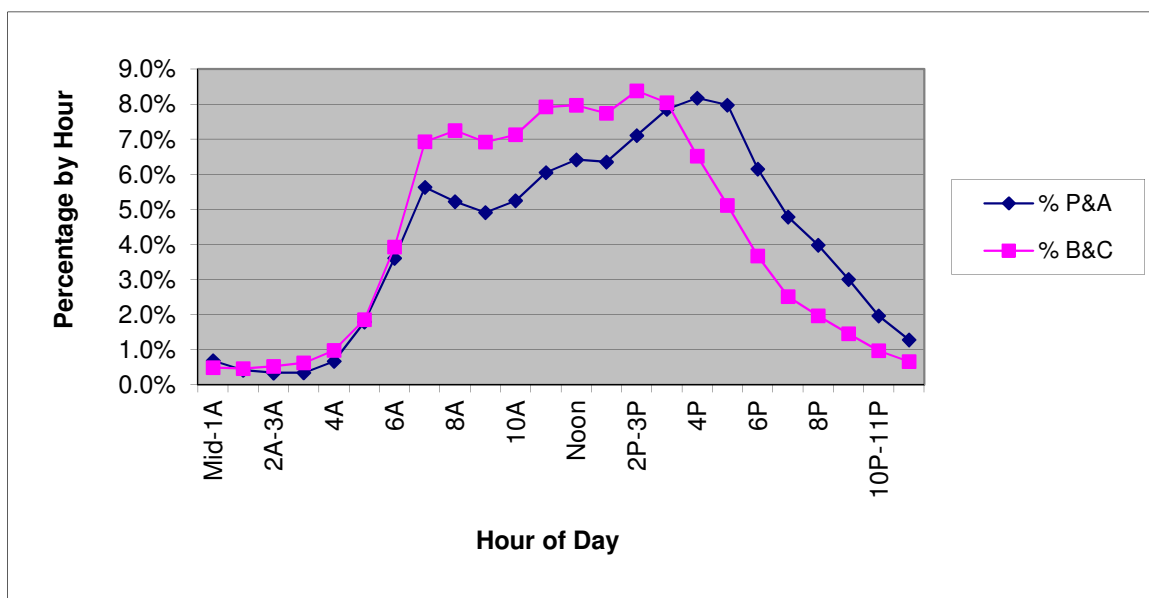
Hourly Percent by Vehicle Type

Urban Minor Arterial

Sample = 270 Counts

Sample of Permanent ATR's and Portable Counts Taken in 2011

Hour	Hour of Day	FC	P& A (Cars)	% P&A (Cars)	B&C (Trucks)	% B&C (Trucks)	Total	% Total
0	Mid-1A	16	21228	0.7%	652	0.5%	21880	0.7%
1	1A-2A	16	12734	0.4%	615	0.5%	13349	0.4%
2	2A-3A	16	10442	0.3%	701	0.5%	11143	0.3%
3	3A	16	10468	0.3%	825	0.6%	11293	0.4%
4	4A	16	20794	0.7%	1297	1.0%	22091	0.7%
5	5A	16	55405	1.8%	2465	1.9%	57870	1.8%
6	6A	16	111180	3.6%	5208	3.9%	116388	3.6%
7	7A	16	173675	5.6%	9185	6.9%	182860	5.7%
8	8A	16	161156	5.2%	9609	7.2%	170765	5.3%
9	9A	16	151488	4.9%	9171	6.9%	160659	5.0%
10	10A	16	161989	5.3%	9448	7.1%	171437	5.3%
11	11A-Noon	16	186630	6.1%	10499	7.9%	197129	6.1%
12	Noon	16	197902	6.4%	10561	8.0%	208463	6.5%
13	1P-2P	16	195865	6.4%	10262	7.7%	206127	6.4%
14	2P-3P	16	219412	7.1%	11108	8.4%	230520	7.2%
15	3P	16	242311	7.9%	10660	8.0%	252971	7.9%
16	4P	16	252278	8.2%	8644	6.5%	260922	8.1%
17	5P	16	246025	8.0%	6785	5.1%	252810	7.9%
18	6P	16	189709	6.2%	4866	3.7%	194575	6.0%
19	7P	16	147553	4.8%	3331	2.5%	150884	4.7%
20	8P	16	122721	4.0%	2603	2.0%	125324	3.9%
21	9P	16	92854	3.0%	1932	1.5%	94786	2.9%
22	10P-11P	16	60600	2.0%	1286	1.0%	61886	1.9%
23	11P-Mid	16	39477	1.3%	875	0.7%	40352	1.3%
			3083896	100%	132588	100%	3216484	100%



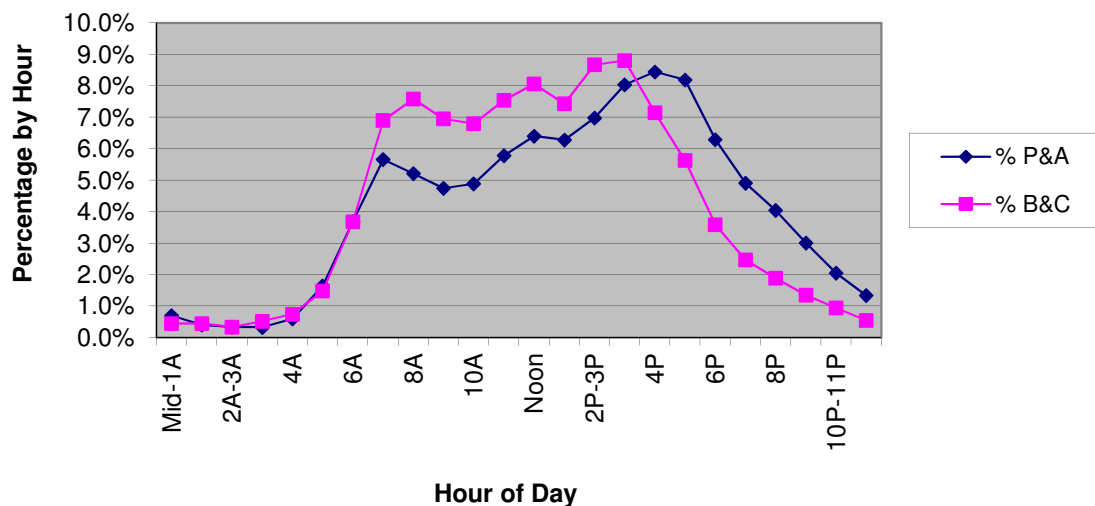
Hourly Percent by Vehicle Type

Urban Collector

Sample = 144 Counts

Sample of Permanent ATR's and Portable Counts Taken in 2011

Hour	Hour of Day	FC	P& A (Cars)	% P&A (Cars)	B&C (Trucks)	% B&C (Trucks)	Total	% Total
0	Mid-1A	17	6483	0.7%	155	0.4%	6638	0.7%
1	1A-2A	17	3806	0.4%	157	0.5%	3963	0.4%
2	2A-3A	17	3067	0.3%	116	0.3%	3183	0.3%
3	3A	17	3058	0.3%	182	0.5%	3240	0.3%
4	4A	17	5583	0.6%	260	0.7%	5843	0.6%
5	5A	17	15244	1.6%	518	1.5%	15762	1.6%
6	6A	17	34304	3.7%	1284	3.7%	35588	3.7%
7	7A	17	52622	5.7%	2406	6.9%	55028	5.7%
8	8A	17	48413	5.2%	2642	7.6%	51055	5.3%
9	9A	17	44121	4.8%	2422	6.9%	46543	4.8%
10	10A	17	45396	4.9%	2370	6.8%	47766	5.0%
11	11A-Noon	17	53746	5.8%	2630	7.5%	56376	5.9%
12	Noon	17	59435	6.4%	2809	8.1%	62244	6.5%
13	1P-2P	17	58321	6.3%	2591	7.4%	60912	6.3%
14	2P-3P	17	64812	7.0%	3022	8.7%	67834	7.0%
15	3P	17	74718	8.0%	3068	8.8%	77786	8.1%
16	4P	17	78472	8.5%	2492	7.2%	80964	8.4%
17	5P	17	76131	8.2%	1964	5.6%	78095	8.1%
18	6P	17	58420	6.3%	1249	3.6%	59669	6.2%
19	7P	17	45553	4.9%	862	2.5%	46415	4.8%
20	8P	17	37580	4.0%	657	1.9%	38237	4.0%
21	9P	17	27917	3.0%	471	1.4%	28388	2.9%
22	10P-11P	17	19019	2.0%	330	0.9%	19349	2.0%
23	11P-Mid	17	12436	1.3%	192	0.6%	12628	1.3%
			928657	100%	34849	100%	963506	100%



Hourly Percent by Vehicle Type

Urban Local

Sample = 4 Counts

Sample of Permanent ATR's and Portable Counts Taken in 2011

Hour	Hour of Day	FC	P& A (Cars)	% P&A (Cars)	B&C (Trucks)	% B&C (Trucks)	Total	% Total
0	Mid-1A	19	94	0.6%	3	0.3%	97	0.6%
1	1A-2A	19	51	0.3%	1	0.1%	52	0.3%
2	2A-3A	19	44	0.3%	3	0.3%	47	0.3%
3	3A	19	42	0.3%	3	0.3%	45	0.3%
4	4A	19	90	0.6%	11	1.0%	101	0.6%
5	5A	19	222	1.4%	14	1.2%	236	1.4%
6	6A	19	482	3.1%	44	3.9%	526	3.2%
7	7A	19	849	5.5%	88	7.8%	937	5.7%
8	8A	19	770	5.0%	76	6.7%	846	5.1%
9	9A	19	764	5.0%	75	6.6%	839	5.1%
10	10A	19	704	4.6%	58	5.1%	762	4.6%
11	11A-Noon	19	771	5.0%	84	7.4%	855	5.2%
12	Noon	19	929	6.0%	81	7.2%	1010	6.1%
13	1P-2P	19	974	6.3%	80	7.1%	1054	6.4%
14	2P-3P	19	1183	7.7%	106	9.4%	1289	7.8%
15	3P	19	1329	8.6%	101	8.9%	1430	8.7%
16	4P	19	1467	9.5%	86	7.6%	1553	9.4%
17	5P	19	1166	7.6%	65	5.7%	1231	7.5%
18	6P	19	960	6.2%	49	4.3%	1009	6.1%
19	7P	19	738	4.8%	40	3.5%	778	4.7%
20	8P	19	740	4.8%	32	2.8%	772	4.7%
21	9P	19	410	2.7%	22	1.9%	432	2.6%
22	10P-11P	19	344	2.2%	6	0.5%	350	2.1%
23	11P-Mid	19	257	1.7%	4	0.4%	261	1.6%
			15380	100%	1132	100%	16512	100%

