

9.0 Passenger Rail Service in Ohio

9.1 Existing Intercity Passenger Rail System Routes

Intercity passenger rail travel is provided by the National Railroad Passenger Corporation, also known as Amtrak, to a limited number of cities across Ohio’s northern and southern regions. Amtrak passenger services in Ohio are discussed below.

Cardinal

The Cardinal operates between New York and Chicago. The service consists of one round-trip three days a week. The Hoosier State route joins the Cardinal route in Indianapolis, providing a daily route to Chicago. The Cardinal only makes one station stop in Ohio at Union Terminal in Cincinnati. Other stops on the route include Philadelphia, Baltimore, Washington DC, and Charleston, WV. Westbound the Cardinal leaves New York’s Penn Station between 6:45 and 6:55 AM (depending on the day) and arrives in Chicago at 10:35 AM the following day. Eastbound, the train leaves Chicago at 5:45 PM and reaches New York at 9:45 PM the next day. Station stops in Cincinnati are made at 1:03 AM (westbound) and 3:17 AM (eastbound). Following are the distances between some of the stops:

Exhibit 9-1 Cardinal Service Segments and Mileage Between Stations

New York – Cincinnati	828 miles
Cincinnati – Indianapolis	123 miles
Indianapolis – Chicago (Cardinal & Hoosier Lines)	196 miles
Total:	1147 miles (45 miles within Ohio)

Capitol Limited

The Capitol Limited operates between Washington DC to Chicago. The service consists of one round-trip daily, stopping at Alliance, Cleveland, Elyria, Sandusky, and Toledo inside Ohio. Intermediate stops outside of Ohio include Pittsburgh and South Bend, IN. Westbound the train leaves Washington DC 4:05 PM and arrives in Chicago at 8:40 AM the following day. Eastbound route train leaves Chicago at 6:50 PM and reaches Washington DC at 1:15 PM the following day. Stops are made in Ohio from 1:34 AM to 5:17 AM (westbound) and 11:49 PM to 3:15 AM (eastbound). The distances between some of the stops along this route are as follows:

Exhibit 9-2 Capitol Limited Service Segments and Mileage Between Stations

Washington DC – Cleveland	439 miles
Cleveland – Toledo	107 miles
Toledo – Chicago	234 miles
Total:	780 miles (260 miles within Ohio)

Lake Shore Limited

The Lake Shore Limited operates between Boston and New York City (the two sections connecting in Albany, NY) and Chicago. The service consists of one round-trip per day and makes the same Ohio stops as the Capitol Limited. Intermediate stops outside of Ohio include Syracuse, NY, Erie, PA, and South Bend, IN. Westbound trains leave New York at 3:45 PM and Boston at 11:55 AM and arrive in Chicago at 9:45 AM the next day. West of Cleveland, the Lake Shore Limited travels the same route as the Capitol Limited. Ohio stops occur between 3:27 AM and 7:05 AM. Eastbound, the train leaves Chicago at 9:00 PM and arrives in Boston at 9:19 PM and New York at 6:25 PM the next day. Ohio stops occur between 1:10 AM and 5:20 AM. The distances between some of the route’s stops are as follows:

Exhibit 9-3 Lake Shore Limited Segments and Mileage Between Stations

New York City – Cleveland	618 miles
Boston – Cleveland	676 miles
Cleveland –Toledo	107 miles
Toledo– Chicago	234 miles
Total:	959 (New York line) 1017 (Boston line) miles (245 miles within Ohio)

Thruway Motorcoach Connections

The Capitol Limited and Lake Shore Limited intercity rail services are supplemented by daily Amtrak Thruway Motorcoach service in Toledo. A Thruway bus departs Toledo for East Lansing (Detroit) at 6:30 AM and arrives at Toledo from East Lansing at 11 PM, with sufficient time for riders to make connections to and from the trains. The following map shows the three routes as they pass through Ohio.

Exhibit 9-4 Current Amtrak Service Routes in Ohio



Source: Amtrak

- Capitol Limited
- Lake Shore Limited
- Cardinal
- Capitol Limited and Lake Shore Limited (west of Cleveland)

9.2 Existing Intercity Passenger Rail System Stations

As noted in the table below, there are seven Amtrak stations in use in Ohio. Of these, two are simply platforms, and one is a platform with a shelter house-type waiting area. The other four are depot buildings with seating areas.

Union Terminal in Cincinnati, OH: This station is an enclosed building generally open from 11:00 PM through 6:30 AM. A ticketing office is also open during these hours. No baggage services are provided. The Route 1 bus on Cincinnati's Metro system also stops outside the terminal.

Cleveland Lakefront Station in Cleveland, OH: This station is an enclosed building located just north of downtown Cleveland on Lake Erie. The station is open from 9:30 PM through 1:00 PM and offers ticketing and baggage services during these hours. The station provides connections to the Blue and Green Lines of Cleveland's RTA system.

Martin Luther King, Jr. Plaza in Toledo, OH: This station, originally called Central Union Terminal, has an enclosed building that is open from 9:00 PM through 12:30 PM. A ticketing office and baggage services are also available during these hours.

Sandusky, OH: This station is an uncovered platform with a small shelter and waiting room. There are no fixed hours for this location, no ticketing office, and no baggage services. The city of Sandusky also offers an on-demand transit system, Sandusky Transit System, so passengers can call to schedule service to/from the station.

Elyria, OH: This station was originally the Amtrak Cleveland Lakefront Station, which was moved to Elyria upon completion of the new station in Cleveland. The station is open from 2:00 AM to 6:00 AM and does not have a ticketing office or baggage services.

Bryan, OH: This station is an enclosed building that is open the limited hours of 1:30 AM to 2:30 AM and 6:30 AM to 8:00 AM. There are no ticketing office or baggage services available at this location.

Alliance, OH: This station is an uncovered platform with a bus stop-style shelter. There are no fixed hours for this location, no ticketing office, and no baggage services.

Exhibit 9-5 shows the current stations in Ohio, identifying their ownership, routes that serve them, and any current intermodal connections they offer.

Exhibit 9-5 Amtrak-Served Stations in Ohio

Station	Owner	Route(s)	Intermodal Connections
Cincinnati	City of Cincinnati	<i>Cardinal / Hoosier State</i>	Metro
Cleveland	Amtrak	<i>Capitol Limited; Lake Shore Limited</i>	RTA Rapid Transit
Toledo	Toledo-Lucas County Port Authority	<i>Capitol Limited; Lake Shore Limited</i>	Amtrak Thruway Motorcoach
Sandusky	City of Sandusky	<i>Capitol Limited; Lake Shore Limited</i>	
Elyria	Amtrak	<i>Capitol Limited; Lake Shore Limited</i>	
Bryan	City of Bryan	<i>Lake Shore Limited</i>	
Alliance	Amtrak	<i>Capitol Limited</i>	

9.3 Intercity Passenger Rail System Performance

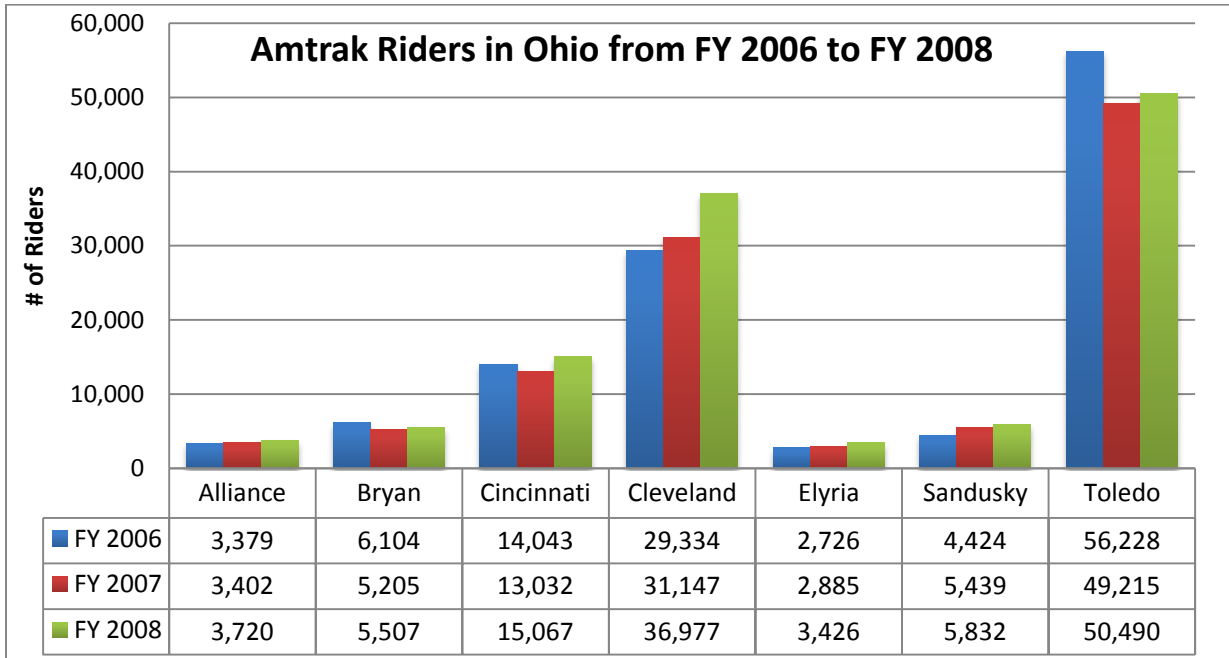
9.3.1 Ridership

National intercity rail passenger ridership and revenues reached their highest levels in Amtrak history in FY 2008 with 28.7 million passengers carried and \$1.73 billion in ticket revenues. In Ohio, ridership on the Amtrak system exceeded 120,000 passengers in FY 2008.

Annual Trends

The total Ohio Amtrak ridership for FY 2008 increased 11 percent from FY 2007, and ticket revenues increased 14 percent. Ridership had also increased by almost 11,000, or roughly nine percent, from FY 2007 to FY 2008. While there was an increase seen at all locations across the state, the largest increase was in Cleveland, where almost 6,000 more boardings were reported. Toledo had the highest passenger volume in Ohio with just under 50,500 reported boardings in FY 2008, which was an increase of approximately 1,000 from the previous year. The following chart shows the average number of boardings and alightings at each station in Ohio for FY 2006 through FY 2008.

Exhibit 9-6: Amtrak Riders in Ohio from FY 2006 to FY 2008



Source: Amtrak

9.3.2 On-Time Performance

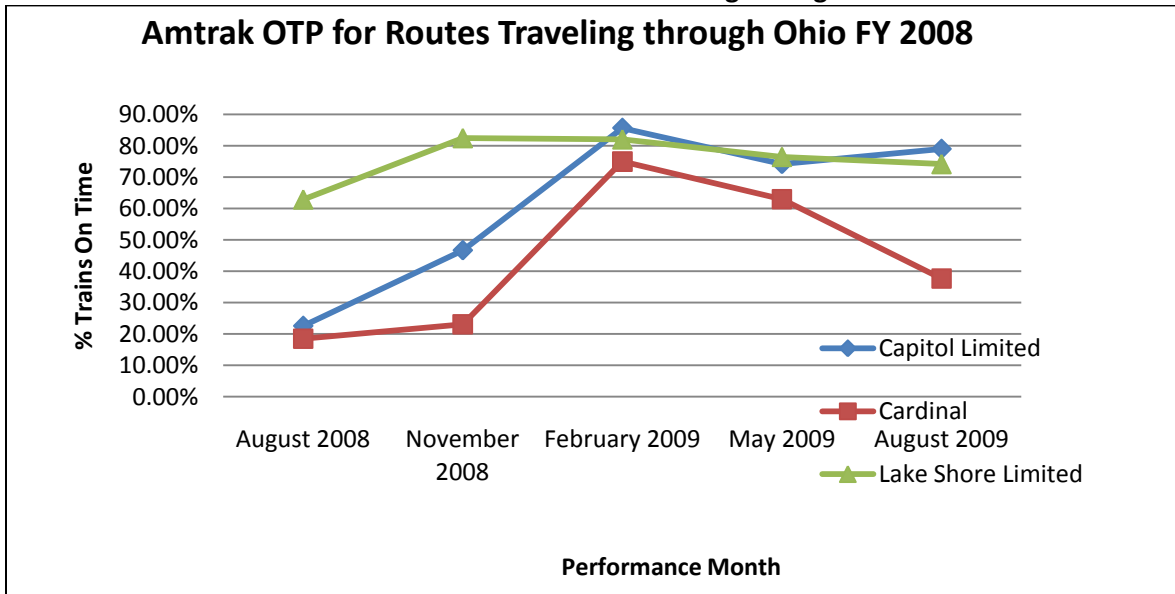
Amtrak defines On-Time Performance as the total number of trains arriving on-time at a station divided by the total number of trains operated on that route. A train is considered on-time if it arrives at the final destination within an allowed number of minutes, or tolerance, of its scheduled arrival time. Trains are allowed a certain tolerance based on how far they travel.¹⁰

OTP Annual Trend

The overall OTP for all Amtrak routes in FY 2008 was 71 percent. The Capitol Limited has averaged 76.3 percent OTP over the past year while the Lake Shore Limited has averaged 76.9 percent OTP. The Cardinal has an average OTP of 56.1 percent over the past year. The chart below shows the changes in OTP over the past year for each of the three routes that travel through Ohio.

¹⁰www.Amtrak.com

Exhibit 9-7: Amtrak OTP for Routes Travelling through Ohio FY 2008



Source: Amtrak

Causes of OTP Delays

Causes for Amtrak train delays can be attributed to a number of reasons including the host railroad, Amtrak itself, or other delays such as border crossings and customs. The chart below shows the major causes of delay on the routes that run through Ohio in July 2009.

Exhibit 9-8 Major Causes of OTP Delay in July 2009

Route	Source of Delay	Share Of Responsibility	Major Causes Of Delay
Cardinal	Host	70.1%	Slow orders, signals
	Amtrak	23.6%	Passenger-related
	Other	6.3%	
Capitol Limited	Host	53.1%	Slow orders, operational
	Amtrak	30.2%	Passenger-related, crew-related
	Other	16.7%	
Lake Shore Limited	Host	65.7%	Slow orders, train interference, track & signal problems
	Amtrak	23.0%	Passenger-related
	Other	11.3%	

Source: Amtrak

Host Railroad-Caused Delays: The host railroads in Ohio are CSX Transportation and Norfolk Southern Railway. The majority of the delays experienced on the routes that serve Ohio were attributed to the host railroads. Specific causes vary by the segment of the route examined.

Amtrak-Caused Delays: Amtrak delays only accounted for about one-quarter of the delays experienced on the routes serving Ohio. Most of these delays were passengers-related. However, the Capitol Limited also experienced a large amount of crew-related delays.

Other Causes of OTP Delays: Other causes of delay were relatively minimal as Ohio routes do not cross international borders or have to go through customs inspections. The Capitol Limited and Lake Shore Limited trains did experience more delays in this category than the Cardinal trains, a result which may be attributable to inclement weather conditions along the northern route adjacent to Lake Erie.

9.4 Intercity Passenger and Local Transit Connections

Currently, multimodal passenger transportation connections in Ohio exist at the Amtrak stations in Cleveland and Toledo.

Cleveland Lakefront Station provides connection to the Blue and Green Lines of the city's RTA Rapid Transit system, if the service is requested. These light rail systems provide service from Lakefront Station to the University Heights/Beechwood area (Green Line) and to Shaker Heights (Blue Line).

Martin Luther King, Jr. Plaza in Toledo offers a connection to the Amtrak Thruway Motorcoach system.

9.5 Existing High Speed Rail Systems

There are currently no high speed rail services in operation in Ohio. Planning for new high speed rail systems is described in **Chapter 10**.

9.6 Existing Commuter Rail Systems

There are currently no commuter rail services in operation in Ohio. Planning for new commuter rail systems is described in **Chapter 10**.

9.7 Existing Tourist Railroads

Ohio also hosts a number of tourist and museum trains. A typical operation consists of a short train ride through scenic or historic part of the country. Tourist trains operate on tracks of different gauges sometimes using rolling stock dating from the early 20th Century. Rolling stock can include steam locomotives, diesel engines, coaches, gang cars, or other types of rolling stock. Tourist railroads typically are either a for-profit business or are operated as non-profit organizations for historical preservation purposes. In some cases, tourist trains operate on track shared with freight trains.

The tourist railroads operating in Ohio are:

- Ashtabula, Carson & Jefferson Railroad
- Byesville Scenic Railroad
- Cuyahoga Valley Scenic Railroad
- Dennison Depot
- Hocking Valley Scenic Railway
- Lebanon, Mason & Monroe Railroad
- Ohio Railway Museum
- Orrville Railroad
- Toledo, Lake Erie & Western Railway and Museum