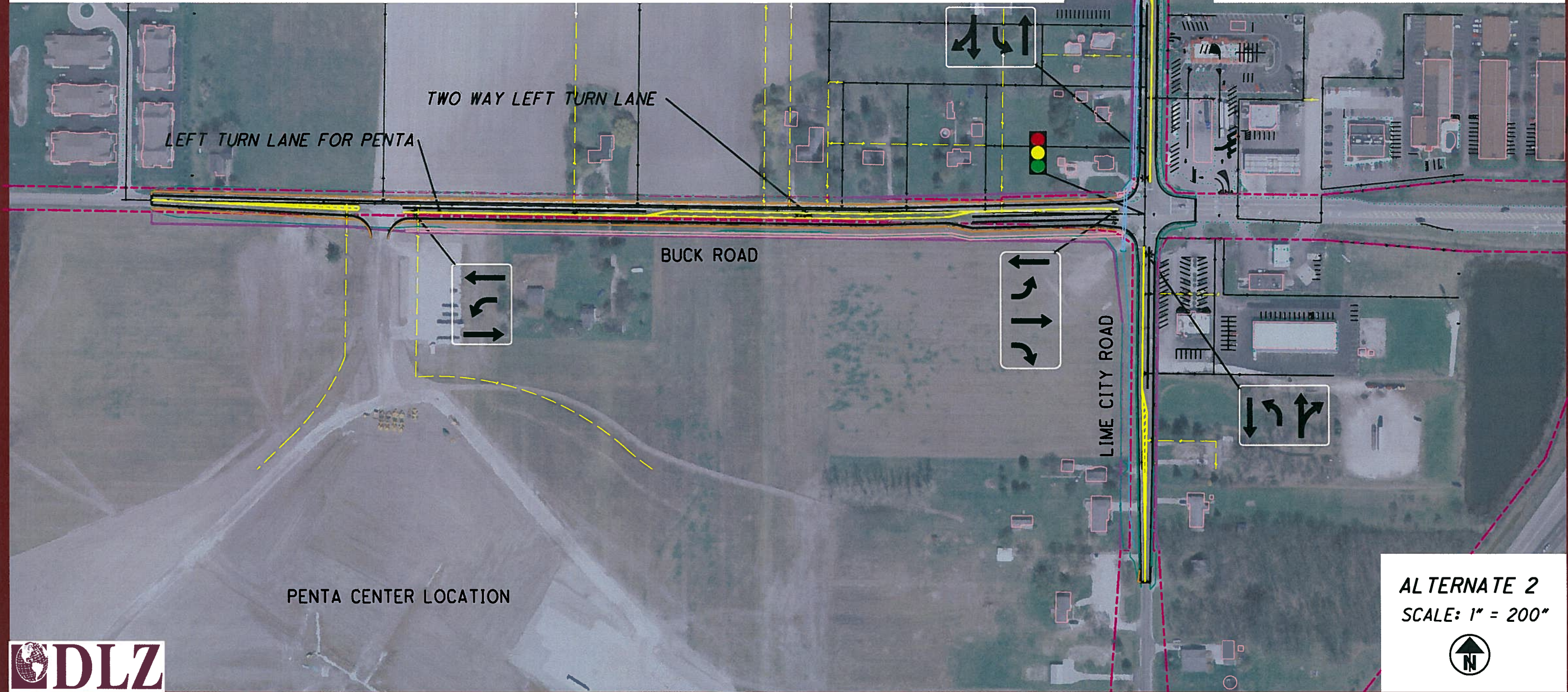









ALTERNATE NO 2 - SIGNAL AT LIME CITY ROAD/BUCK ROAD AND A LEFT TURN LANE AT PENTA - THIS ALTERNATE WILL PROVIDE LANE WIDENING AND THE ADDITION OF LEFT AND RIGHT EXCLUSIVE TURN LANES ON BOTH LIME CITY ROAD AND BUCK ROAD AND WOULD INCLUDE THE INSTALLATION OF A TRAFFIC SIGNAL AT THE LIME CITY ROAD/BUCK ROAD INTERSECTION. THE ENTRANCE TO THE PENTA CENTER WOULD INCLUDE A DEDICATED WESTBOUND LEFT TURN LANE, BUT NOT INCLUDE A SIGNAL. IT ALSO REQUIRES THE ENCLOSURE AND RELOCATION OF THE ELMER HAHN DITCH RUNNING ALONG THE WEST SIDE OF LIME CITY ROAD. THIS ALTERNATE REQUIRES BOTH PERMANENT AND TEMPORARY RIGHT-OF-WAY TO PROPERTIES FOR THE ENTIRE PROJECT LENGTH. THE LIME CITY ROAD/BUCK ROAD INTERSECTION WILL OPERATE AT A LOS C IN THE MORNING AND LOS B IN THE AFTERNOON AFTER CONSTRUCTION IS COMPLETE. THE PENTA CENTER ENTRANCE WILL OPERATE AT A LOS F BOTH IN THE MORNING AND AFTERNOON WHEN THE CONSTRUCTION IS COMPLETE. THE TOTAL ESTIMATED CONSTRUCTION AND RIGHT-OF-WAY COST FOR THIS ALTERNATE IS \$2,787,800.

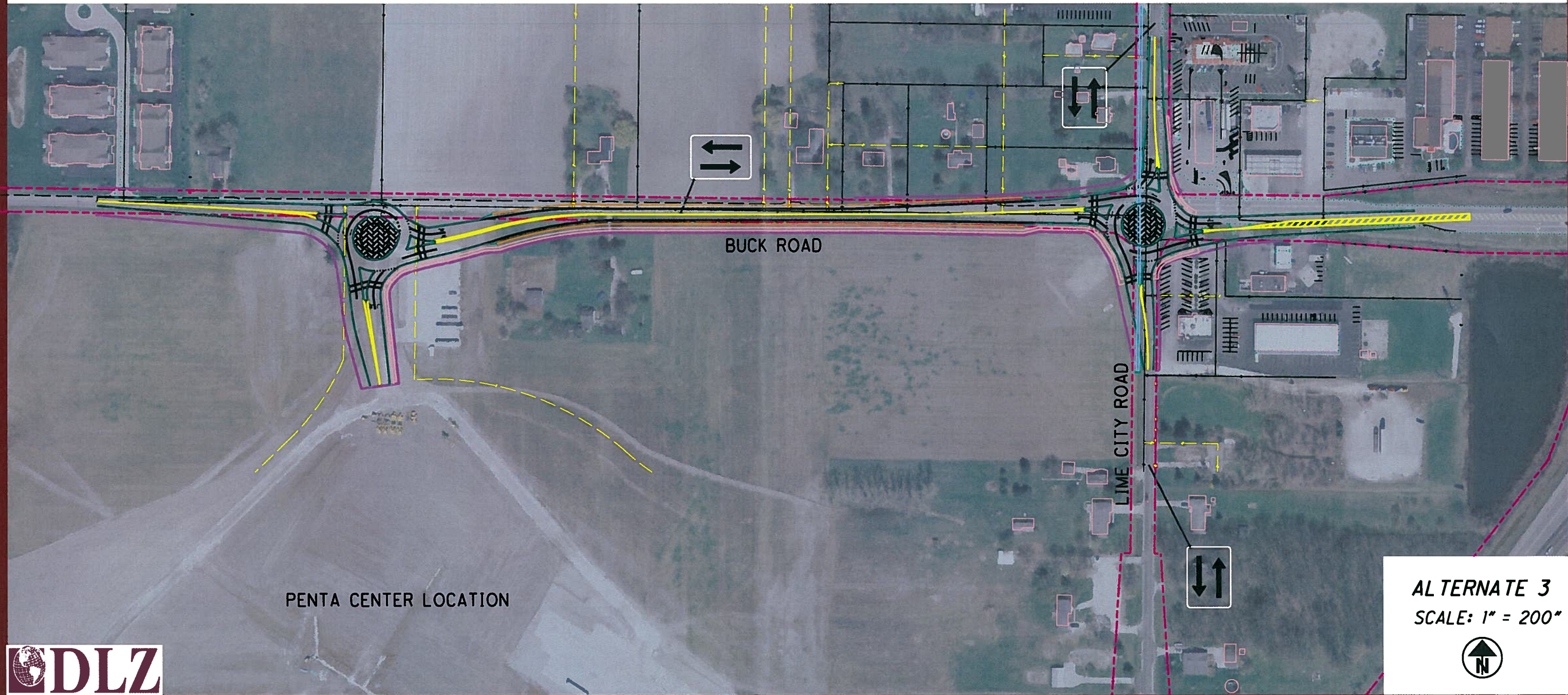
LEGEND	
EXISTING R/W	
PROPOSED R/W	
STORM SEWER	
CURB	
SHOULDER	
PROPERTY LINE	
PROPERTY LINE	



ALTERNATE 2
 SCALE: 1" = 200"








ALTERNATE NO 3 - ROUNDABOUTS AT BOTH INTERSECTIONS OF LIME CITY ROAD/BUCK ROAD AND THE PENTA CENTER - THIS OPTION WILL PROVIDE A ROUNDABOUT AT BOTH OF THE PROJECT INTERSECTIONS. THE ROADWAYS WILL APPROACH THE ROUNDABOUTS WITH ONE LANE AND THEN WIDEN TO TWO LANES AS IT TRAVELS THROUGH THE ROUNDABOUT. THE ROUNDABOUT AT THE PENTA CENTER WILL REQUIRE PERMANENT RIGHT-OF-WAY FROM THE PENTA CENTER ITSELF AND POSSIBLY TEMPORARY RIGHT-OF-WAY FROM THE PROPERTIES ON THE NORTH SIDE OF THE ROADWAY. THE ROUNDABOUT AT LIME CITY ROAD AND BUCK ROAD WILL REQUIRE PERMANENT RIGHT-OF-WAY FROM THE PROPERTIES NEAR THE FOUR CORNERS OF THE INTERSECTION AND POSSIBLY SOME TEMPORARY RIGHT-OF-WAY FOR GRADING PURPOSES. THIS ALTERNATE WILL REQUIRE THE ENCLOSURE AND RELOCATION OF A PORTION OF THE ELMER HAHN DITCH ON THE WEST SIDE OF LIME CITY ROAD. BOTH THE LIME CITY ROAD/BUCK ROAD INTERSECTION AND THE PENTA CENTER ENTRANCE WILL OPERATE AT A LOS A IN THE MORNING AND IN THE AFTERNOON AFTER CONSTRUCTION IS COMPLETE. THE TOTAL ESTIMATED CONSTRUCTION AND RIGHT-OF-WAY COST FOR THIS ALTERNATE IS \$3,941,000.

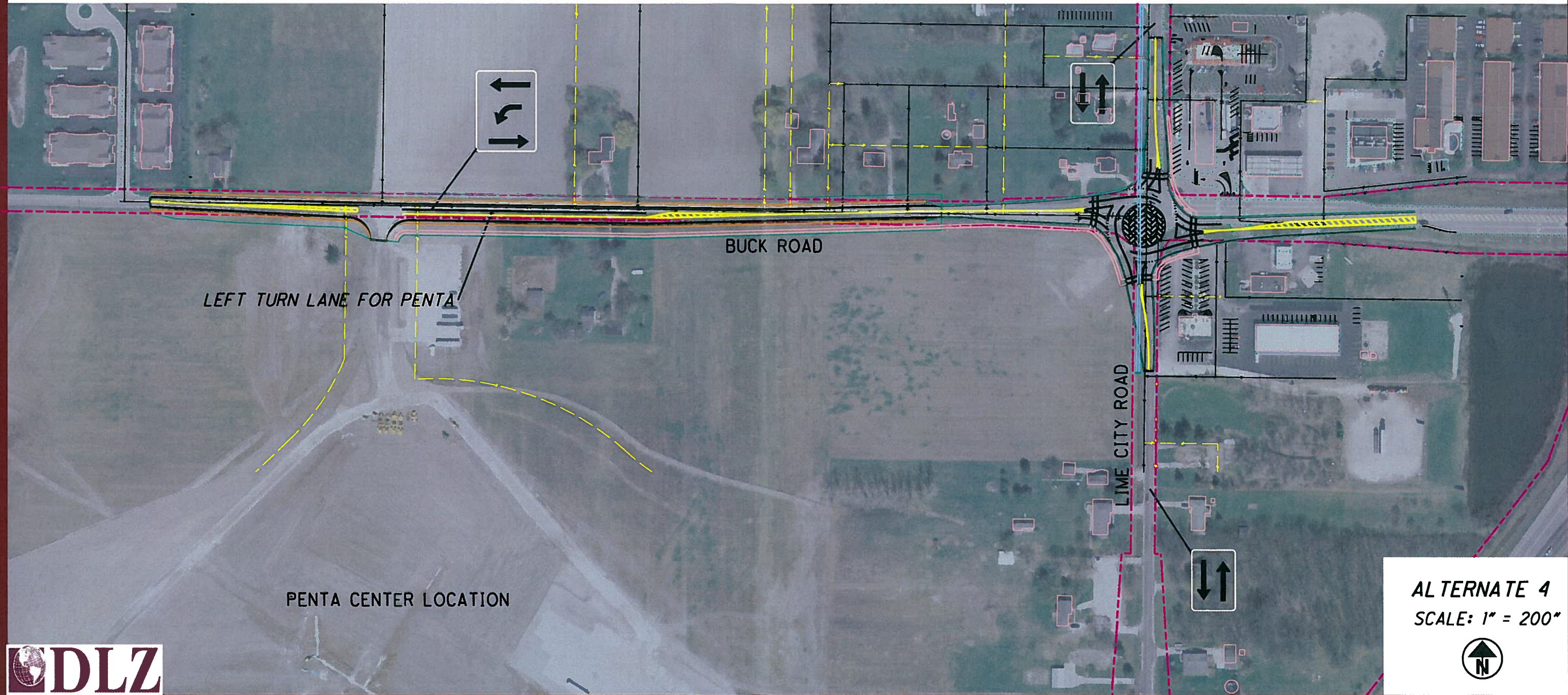
LEGEND	
EXISTING R/W	
PROPOSED R/W	
STORM SEWER	
CURB	
SHOULDER	
PROPERTY LINE	
PROPERTY LINE	



ALTERNATE 3
 SCALE: 1" = 200'


ALTERNATE NO 4 - ROUNDABOUT AT LIME CITY ROAD/BUCK ROAD AND A LEFT TURN LANE AT PENTA - THIS ALTERNATE IS ONE COMBINATION OF ALTERNATES 2 AND 3 AND WILL PLACE A ROUNDABOUT AT THE LIME CITY/BUCK INTERSECTION AND PROVIDE A DEDICATED LEFT TURN LANE AT THE PENTA CENTER ENTRANCE. IT WILL REQUIRE BOTH PERMANENT AND TEMPORARY RIGHT-OF-WAY FROM ADJACENT PROPERTY OWNERS AND WILL REQUIRE THE ENCLOSURE AND RELOCATION OF A PORTION OF THE ELMER HAHN DITCH. THE LIME CITY ROAD/BUCK ROAD INTERSECTION WILL OPERATE AT A LOS A BOTH IN THE MORNING AND AFTERNOON AND THE PENTA CENTER ENTRANCE WILL OPERATE AT A LOS F BOTH IN THE MORNING AND AFTERNOON WHEN THE CONSTRUCTION IS COMPLETE. THE TOTAL ESTIMATED CONSTRUCTION AND RIGHT-OF-WAY COST FOR THIS ALTERNATE IS \$2,874,850.

LEGEND	
EXISTING R/W	
PROPOSED R/W	
STORM SEWER	
CURB	
SHOULDER	
PROPERTY LINE	
PROPERTY LINE	

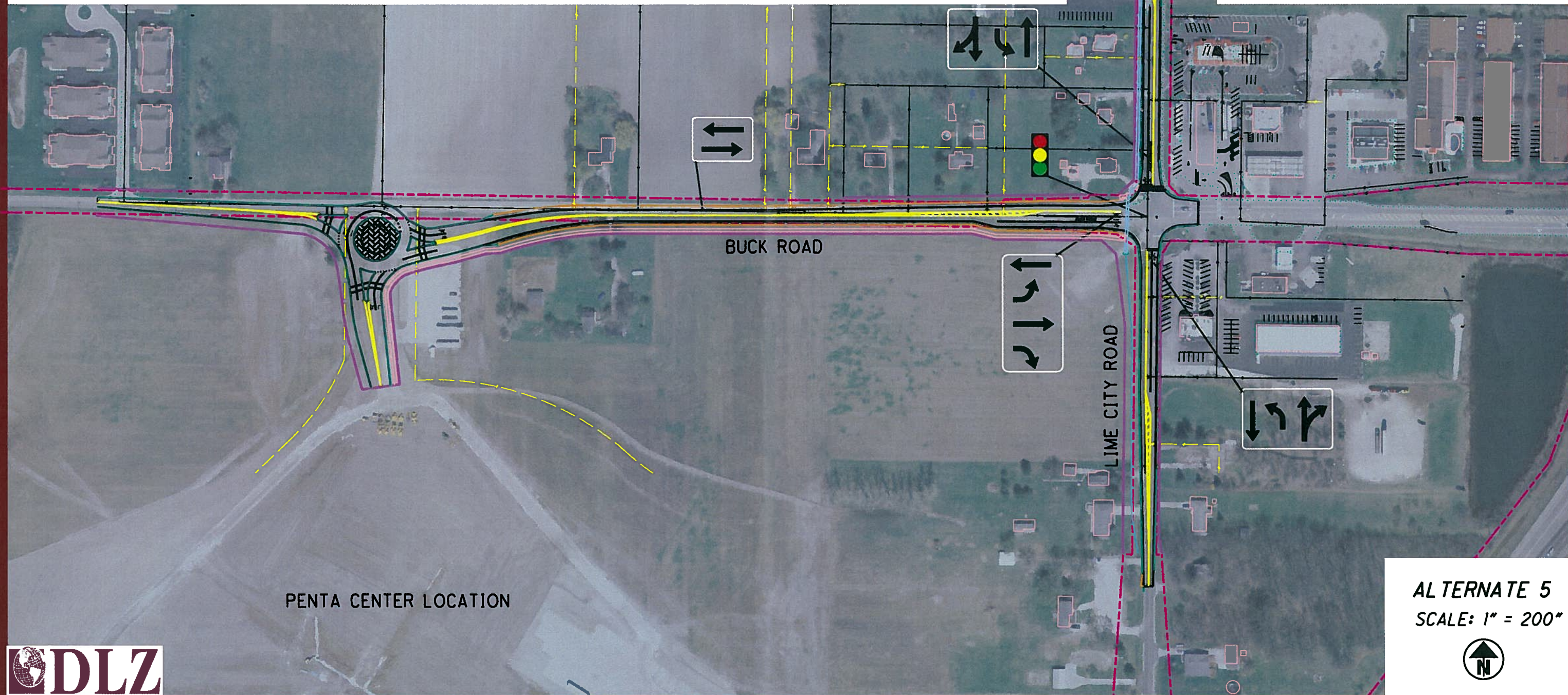


ALTERNATE 4
 SCALE: 1" = 200"




ALTERNATE NO 5 - SIGNAL AT LIME CITY ROAD/BUCK ROAD AND A ROUNDABOUT AT PENTA - THIS ALTERNATE IS A SECOND COMBINATION OF ALTERNATES 2 AND 3 AND WILL PLACE A SIGNAL AT THE LIME CITY/BUCK INTERSECTION AND PROVIDE A ROUNDABOUT AT THE PENTA CENTER ENTRANCE. IT WILL ALSO REQUIRE BOTH PERMANENT AND TEMPORARY RIGHT-OF-WAY FROM ADJACENT PROPERTY OWNERS AND AGAIN REQUIRE THE ENCLOSURE AND RELOCATION OF A PORTION OF THE ELMER HAHN DITCH. THE LIME CITY ROAD/BUCK ROAD INTERSECTION WILL OPERATE AT A LOS C IN THE MORNING AND LOS B IN THE AFTERNOON AFTER CONSTRUCTION IS COMPLETE. THE PENTA CENTER ENTRANCE WILL OPERATE AT A LOS A BOTH IN THE MORNING AND AFTERNOON WHEN THE CONSTRUCTION IS COMPLETE. THE TOTAL ESTIMATED CONSTRUCTION AND RIGHT-OF-WAY COST FOR THIS ALTERNATE IS \$3,713,500.

LEGEND	
EXISTING R/W	
PROPOSED R/W	
STORM SEWER	
CURB	
SHOULDER	
PROPERTY LINE	
PROPERTY LINE	



ALTERNATE 5
SCALE: 1" = 200"

