



# OHIO DEPARTMENT OF TRANSPORTATION DISTRICT THREE



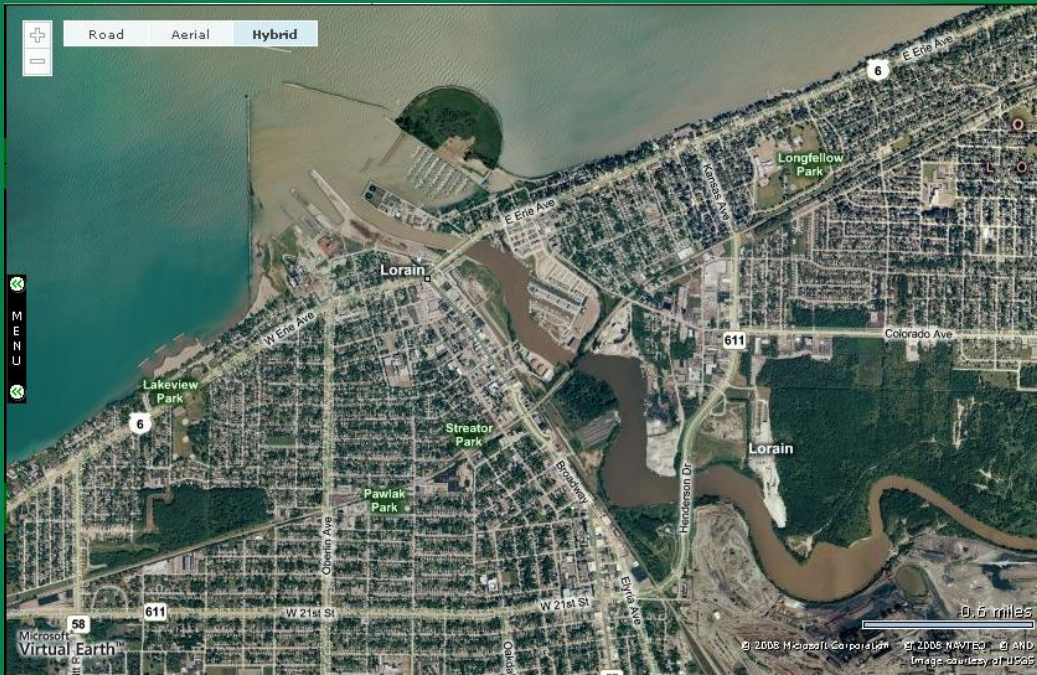
## Charles Berry Bascule Bridge Facts

PID 77464, LOR-6-9.67, ODOT PROJECT 113(08)



TED STRICKLAND, OHIO GOVERNOR • JAMES G. BEASLEY, P.E., P.S., ODOT DIRECTOR  
JOHN HART, P.E., DISTRICT DEPUTY DIRECTOR

# History



The Charles Berry Memorial Bridge carries four lanes of U.S. Route 6/ Erie Avenue over the Black River at the City of Lorain's port to Lake Erie.



# History

- Built and opened to traffic in 1940.
- Bascule span is 333 feet long
- Overall structure length is 1,052 feet.
- The roadway carries an average of 14,720 vehicles per day (2005).



# History

- According to the U.S. Code of Federal Regulations Part 117.850, the Erie Avenue (Charles Berry Memorial) Bridge shall be able to be open at all times necessary, with advanced notice given for the Black River waterway traffic.



- It cannot remain closed to restrict waterway traffic.



# History

- The Black River waterway is maintained by the U.S. Coast Guard and is a resource for both pleasure watercraft and commercial vessels, including those shipping materials to industries in the City of Lorain along the Black River.



# History

- Five bridges of this type currently operate in Ohio.
- ODOT is responsible for construction, reconstruction, major maintenance and repair, and operation of the Bridge;
- However, it is operated by the Lorain County Board of Commissioners (ODOT reimburses the County) through the Lorain Port Authority.



# History

- Approximately every ten years, the bridge has maintenance and/or major repair work done to various items to upgrade the bridge and its control towers.
  - A major renovation was completed in 1988 and involved moving most of the operations to the west control tower. In 1998, a minor renovation was performed.



# History

- By Ohio law, all bridges are required to receive an annual inspection.
- Due to the complexity involved with inspecting this particular bridge, ODOT contracts this work to a firm on a three-year basis.





# History

- The firm awarded the contract for 2004-2006 was Barr & Prevest of Columbus, Ohio.



- It was the 2004 annual inspection that serves as the starting point for construction plans for this project.



# Background

## (Award to Construction)

- Project 113(08), for bridge maintenance & repairs, was awarded to Great Lakes Construction Company of Hinckley, Ohio on February 27, 2008 for \$1,741,499.60.
- The project involves technology upgrades, bridge deck and substructure repairs, maintenance to the control towers and machine room, spot painting, pavement repairs on the sidewalks and bridge approach, and various repairs.



# Background

## (Award to Construction)

- Pre-construction Meeting on April 15
  - Preliminary schedule presented by the contractor and modifications discussed with ODOT, the Lorain Port Authority, Great Lakes, Barr & Prevest, and the City of Lorain.
  - The estimated start date was April 21, 2008 and estimated completion date is May 31, 2009.



# Background

## (Award to Construction)

- An original plan note for an 80-day closure was discussed to ensure all in attendance were on the same page.
- Included opening the bridge for three City of Lorain/Lorain Port Authority events:
  - The Lorain International Festival, June 26-29;
  - Independence Day Festivities, July 2-6; &
  - The Port Festival, July 17-20.
- It was noted that these brief openings could extend the closure beyond the 80-day note.



# Background

## (Award to Construction)

- At the discretion of the contractor (Great Lakes):
  - Work began in April and lane closures began in May per the guidelines of the contract (9:00 a.m. to 3:00 p.m.).
  - The Bridge closure was originally scheduled for 6/5, with an 8/28 OR LATER opening.
  - On 6/4, the closure was delayed until Monday, 6/9 and the opening was delayed until 9/2 OR LATER.
- In both public announcements, it was made clear that the scheduled opening date was not something that could be confirmed based on the complexities involved with the project.



# Current Situation

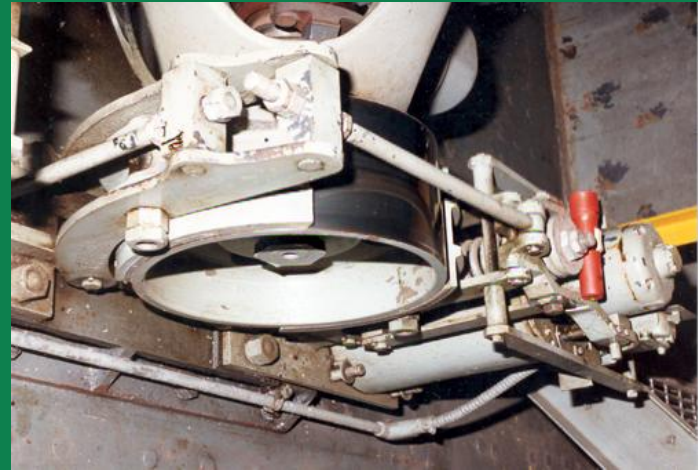
- The Charles Berry Memorial Bridge/U.S. 6 is closed between Broadway Avenue (State Route 57) and Arkansas Avenue. Traffic is being detoured along State Route 611 and State Route 301.
  - The added length for local traffic to drive between the east and west points of the bridge closure – along Broadway Avenue, Henderson Drive, and Colorado Avenue – is approximately 3.6 miles and 9 minutes driving.
- No definitive date for re-opening the bridge is yet available, but ODOT has dedicated resources to doing whatever is possible to get it open as soon as possible.



# Current Situation

## (Strategies for Opening the Bridge)

- During the maintenance work this summer, additional components needed for the Braking System were identified.



- Parts ordered Sept. 8 from a company in Wisconsin; with an estimated 5 week delivery
- It is estimated they will be installed within two weeks after arrival.



# Current Situation

## (Strategies for Opening the Bridge)

- In August, it was discovered that the newly-installed Drive Controllers were not communicating properly with the existing gauges in the bridge's Consoles.





# Current Situation

## (Strategies for Opening the Bridge)

- The solution was to order Signal Conditioners to help communicate information in a format that would allow the new Drive Controllers to work with the existing Consoles.
  - Components ordered on Oct. 9; expected to be shipped within 4 weeks.
  - Upon installation of the Conditioners, the Bridge will be tested to determine its operational status.
  - The Bridge will be opened when the Contractor approves the operational status and safety for the traveling public.



# Current Situation

## (Strategies for Opening the Bridge)

- ODOT held its next Project Progress Meeting later today, and will have additional information following that meeting.

