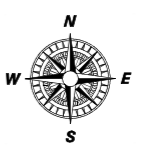
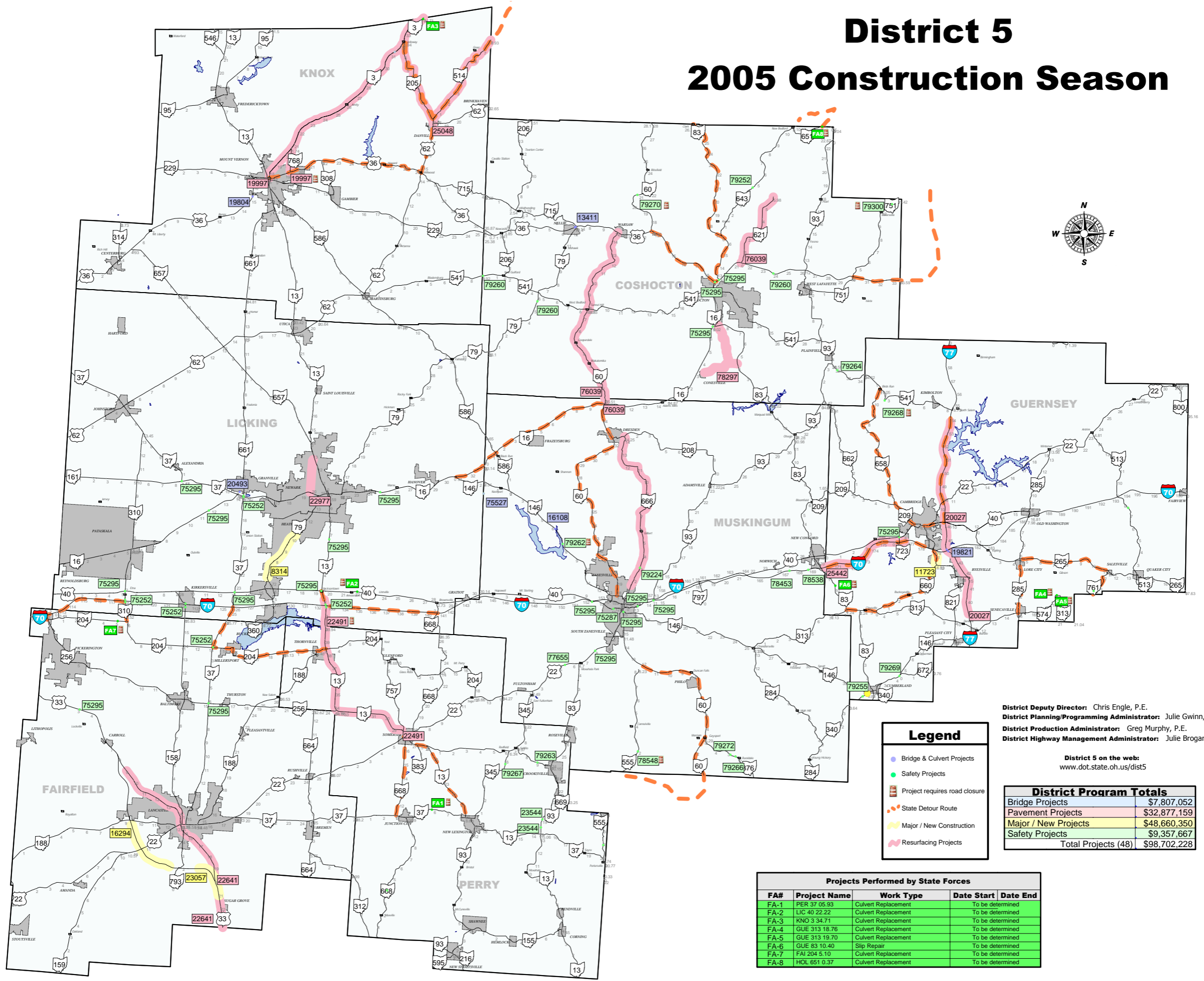


# District 5 2005 Construction Season



District Deputy Director: Chris Engle, P.E.  
 District Planning/Programming Administrator: Julie Gwinn, P.E.  
 District Production Administrator: Greg Murphy, P.E.  
 District Highway Management Administrator: Julie Brogan

District 5 on the web:  
[www.dot.state.oh.us/dist5](http://www.dot.state.oh.us/dist5)

Legend	
	Bridge & Culvert Projects
	Safety Projects
	Project requires road closure
	State Detour Route
	Major / New Construction
	Resurfacing Projects

District Program Totals	
Bridge Projects	\$7,807,052
Pavement Projects	\$32,877,159
Major / New Projects	\$48,660,350
Safety Projects	\$9,357,667
<b>Total Projects (48)</b>	<b>\$98,702,228</b>

Projects Performed by State Forces				
FA#	Project Name	Work Type	Date Start	Date End
FA-1	PER 37 05 93	Culvert Replacement	To be determined	
FA-2	LIC 40 22 22	Culvert Replacement	To be determined	
FA-3	KNO 3 34 71	Culvert Replacement	To be determined	
FA-4	GUE 313 18 76	Culvert Replacement	To be determined	
FA-5	GUE 313 19 70	Culvert Replacement	To be determined	
FA-6	GUE 83 10 40	Slip Repair	To be determined	
FA-7	FAI 204 5 10	Culvert Replacement	To be determined	
FA-8	HOL 651 0 37	Culvert Replacement	To be determined	

PID	Project Name	Work Category	Estimated Award Date	Estimated Construction Cost	Project Description	Innovative Contracting	Traffic Control
8314	LIC SR 79 06 76	Major Reconstruction	01/28/03	\$16,026,395	Add 2 & 3 lanes, resurface, provide guard rail, pavement marking, and traffic signal at industrial park.	Partnership	Traffic maintained - One lane each direction
11723	GUE SR 209 11 50	Major Reconstruction	06/01/03	\$6,139,550	Revise existing roadway from 2 to 5 lanes. Projected completion in May 2005.		One lane closure w/arrow board
13411	COS US 36 07 01	Bridge Repair	06/14/04	\$2,533,660	Rehabilitate deficient steel bridge over the Walhonding River, provide earth work. Relocate SR79 to improve sight distance.		One lane closure w/signals
16108	MUS SR 146 06 52	Bridge Repair	09/30/04	\$792,110	Replace and widen existing deck of existing steel beam bridge over Big Run.	A+B Bid	One lane closure w/signals
16294	FAI US 33 13 25 (Bypass Phase 2)	New Construction	03/14/02	\$20,555,700	Lancaster Bypass-Section 2	Partnership	Various closures
19804	KNO US 36 15 19	Bridge Repair	09/16/04	\$561,050	Deck replacement, patch abutments and paint.	A+B Bid	One lane closure w/signals
19821	GUE IR 77 07 68	Bridge Repair	12/20/02	\$2,120,800	Deck replacement and painting two bridges / design build landscaping.	A+B Bid	One lane closure w/arrow board
19997	KNO SR 3 17 82	Resurfacing, Undivided System	06/30/05	\$3,457,710	Resurface with related work. Culvert replacement at KNO SR3 31.35		30 day closure for SR768 Intersection realignment. 3 day closure to replace culvert at mm 31.3
20027	GUE IR 77 02 50	Resurfacing, Divided System	12/22/04	\$6,115,800	Resurface with related work.		Traffic maintained
20493	LIC CR 539B 00 15	Bridge Repair	03/31/05	\$1,117,632	Rehabilitation of bridge over bike path.		60 - day closure
21540	D05-PM-FY2004(A)	Pavement Marking	04/19/04	\$138,480	District wide fast dry paint project.		Traffic maintained w/lfange
21547	D05-MOW-FY2004/FY2005	Mowing	10/30/03	\$275,000	District wide interstate mowing two (2) year contract FY2004 & FY2005.		Traffic maintained
22491	PER/LIC SR 13 28 73/00.00	Resurfacing, Undivided System	05/19/05	\$4,397,493	Resurfacing with related work. Turn lanes will be added at SR 204; Zion Rd; and Boundaries Rd. The signals at SR 204 and the Zion Rd will be upgraded. Replace a pipe arch over a tributary of Little Rush Creek.	A+B Bid	Traffic maintained w/lfange - weekend closure
22641	FAI US 33 9 11 (Memorial Drive)	Resurfacing, Divided System	03/03/05	\$10,639,445	Resurfacing with 2" overlay. Work is contingent on the completion of US33 Bypass.	Incentive/Disincentive	Traffic maintained
22644	D05-RPM-FY2005	Raised Pavement Markers	03/03/05	\$216,882	Raised pavement marking replacement project.		Traffic maintained w/lfange
22645	D05-PM-FY2005(A) - Fast Dry	Pavement Marking	03/03/05	\$109,212	Fast dry paint project.		Traffic maintained
22646	D05-PM-FY2005(B) - Poly	Pavement Marking	03/03/05	\$451,375	Poly paint project.		Traffic maintained
22654	D05-GR-FY2005/FY2006	Guardrail Rebuilding	02/10/05	\$524,230	District wide guardrail ding & dent 2 year repair contract for FY 2005 & FY 2006.		Traffic maintained
22977	LIC CR 125 01 91 (21st Street)	Resurfacing, Divided System	05/19/05	\$935,464	Resurface N 21st Street from SR 16 to M. Vernon Road. Remove and replace asphalt, repair curbs & ramps, & stripe. Modified asphalt for high traffic volumes.		One lane closure w/lfange
23057	FAI US 33 19 79 (Bypass Phase 4)	New Construction	01/27/03	\$21,965,100	Lancaster Bypass-Section 4.	Incentive/Disincentive	Various closures
23544	PER SR 93 18 39	Spot Safety	05/19/05	\$2,163,700	Reconstruct 0.83 miles of two lane rural highway on SR93 to eliminate four deficient curves. Replace deficient structures at SLM 19.05 and 18.44.	A+B Bid	One lane closure w/lfange
25044	D05-SIGN-FY2005	Signs	12/09/04	\$948,610	Interstate sign replacement program on IR70.		Traffic maintained
25048	KNO SR 205 00 00	Resurfacing, Undivided System	06/30/05	\$1,504,015	Resurfacing with related work. Buggy lanes removed.		Traffic maintained
25442	GUE IR 70 00 00	Resurfacing, Divided System	03/31/05	\$3,383,228	Resurfacing with related work.		Traffic maintained
75252	D05-TSG-FY2004/FY2005	Signals	03/23/04	\$855,360	Installation of signals at the intersection of SR37 & SR204, and IR70 & SR310 (EB & WB) and IR70 & SR158 (EB & WB), and IR70 & SR13 (EB & WB) and SR661 at SR16 and SR161 at SR 37		Traffic maintained w/lfange
75287	MUS Signal Project	Signals	06/04/04	\$419,160	Remove existing outdated signals, controls and poles. Replace with current technology. Signal locations: 6th & South St. / 6th & Market / 6th & Shinnick.		Traffic maintained
75295	D05-TSG-FY2005	Signals	11/03/04	\$327,560	Rapid signal installation in Coshocton County at 1) SR 16/SR 83; 2) US 36/SR 83/CR1a, and 3) US 36/SR 16/83; in Fairfield County at 4) US 33/Pickerington Rd, 5) SR 37/SR 256 and 6) US 22/SR 723; in Licking County 13) US 40/SR 13; in Muskingum County 14) SR 60/old SR 16, 15) US 22/Pinkerton Rd, 16) US 22/Richards Rd, 17) US 22 / US40 / SR 93, 18) US 40/Rehl Rd.		Traffic maintained w/lfange
75420	D05-PM-FY2004(C) - Thermoplastic	Pavement Marking	06/14/04	\$78,640	District wide thermoplastic striping project.		Traffic maintained
75527	MUS CR 408 08 25	Bridge Replacement	08/04/05	\$681,800	Replace Pleasant Valley bridge over Licking River		Traffic maintained
76039	MUS/COS SR 60 35.34/0.000	Resurfacing, Undivided System	10/06/04	750,000	Resurfacing with related work. Ohio stip FY 2004 to FY 2007 page 78, 2nd project		Traffic maintained
78286	GUE-FY 05 Salt Fork Wildlife	Aggregate	09/01/05	\$209,000	Aggregate for shoulders and ditch clean out for drainage improvement.		Traffic maintained
78297	COS CR 271 1 37 (Ethanol Plant)	Resurfacing, Undivided System	06/30/05	\$644,415	Resurfacing and add 2' paved shoulders in various areas.		One lane closure w/lfange
78453	MUS IR 70 25 19 (167.5) EB	Slip repair	04/15/05	\$1,000,000	Emergency slip repair on IR70 in Muskingum County	Emergency	60 - day shoulder closure
78538	MUS IR 70 25 81 (168.6) WB	Slip repair	04/15/05	\$250,000	Emergency slip repair	Emergency	60 - day shoulder closure
78548	MUS SR 555 1 90 (FEMA)	Slip repair	01/30/05	\$75,000	Emergency slip repair	Emergency	30 - day closure
78811	MUS Dillon Wetland Access Road	Reactive Maintenance	07/21/05	\$55,000	Repairs to the access road at the Dillon wetland		Traffic maintained
79255	GUE SR 340 0 45 (FEMA)	Slip repair	02/16/05	\$66,000	Emergency slip repair for a 200 foot slip of the embankment onto the shoulder and roadway.	Emergency	Traffic maintained
79262	MUS SR 146 7 60	Slip repair	03/16/05	\$165,000	Emergency slip repair	Emergency	30 - day closure
79263	PER SR 669 9 10	Slip repair	04/06/05	\$137,500	Emergency slip repair	Emergency	Traffic maintained
79264	COS SR 541 32 50	Slip repair	03/18/05	\$55,000	Emergency culvert replacement and slip repair	Emergency	Traffic maintained
79266	MUS SR 376 2 30 (FEMA)	Slip repair	03/18/05	\$220,000	Emergency slip repair	Emergency	One lane closure w/signals
79267	PER SR 345 5 60	Slip repair	03/18/05	\$55,000	Emergency slip repair	Emergency	Traffic maintained w/lfange
79268	GUE SR 541 2 70	Slip repair	04/15/05	\$500,000	Emergency slip repair	Emergency	45 - day closure
79269	GUE SR 146 4 33	Slip repair	05/04/05	\$232,119	Emergency slip repair	Emergency	45 - day closure
79270	COS SR 60 21 05	Slip repair	03/18/05	\$468,928	Emergency slip repair	Emergency	30 - day closure
79272	MUS SR 376 2 70 (FEMA)	Slip repair	04/15/05	\$82,500	Emergency slip repair	Emergency	One lane closure w/signals
79292	COS LAKE PARK SLIP	Slip repair	03/17/05	\$253,000	Repair of embankment slip	Emergency	Traffic maintained
79300	COS SR 751 10 90	Slip repair	03/18/05	\$75,000	Emergency slip repair	Emergency	20 - day closure