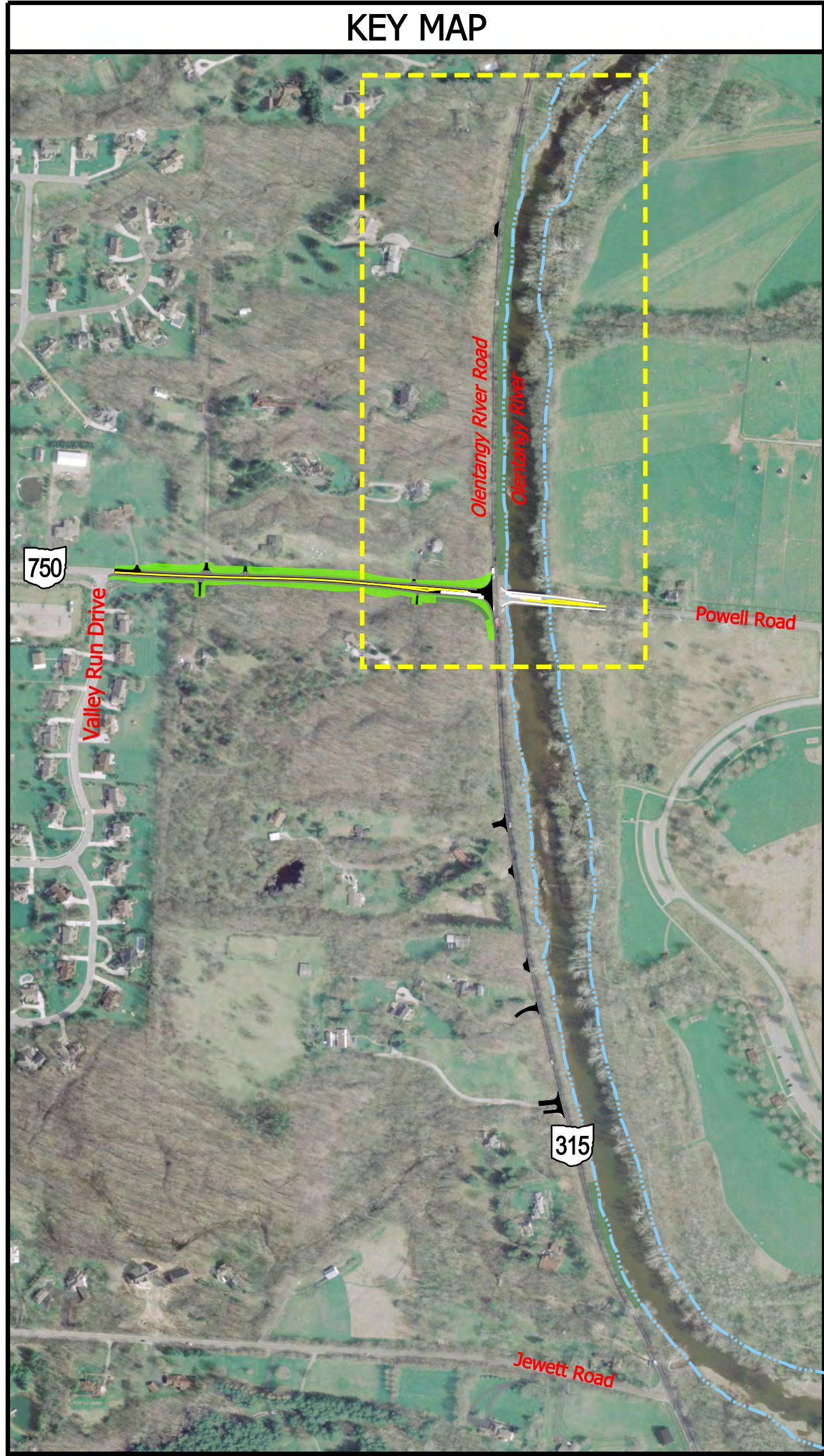


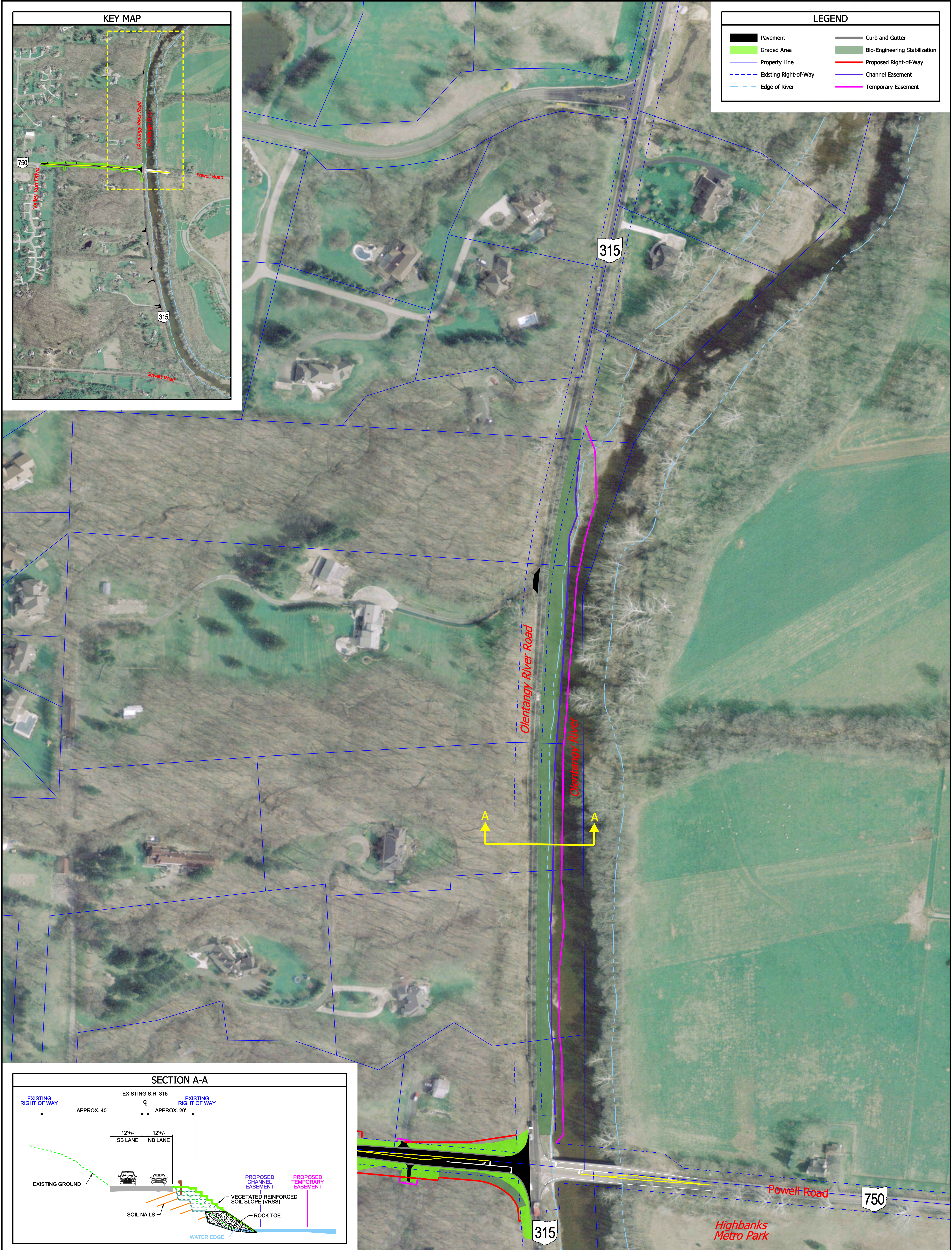
Preferred Alternative SR-315 Improvements (North)



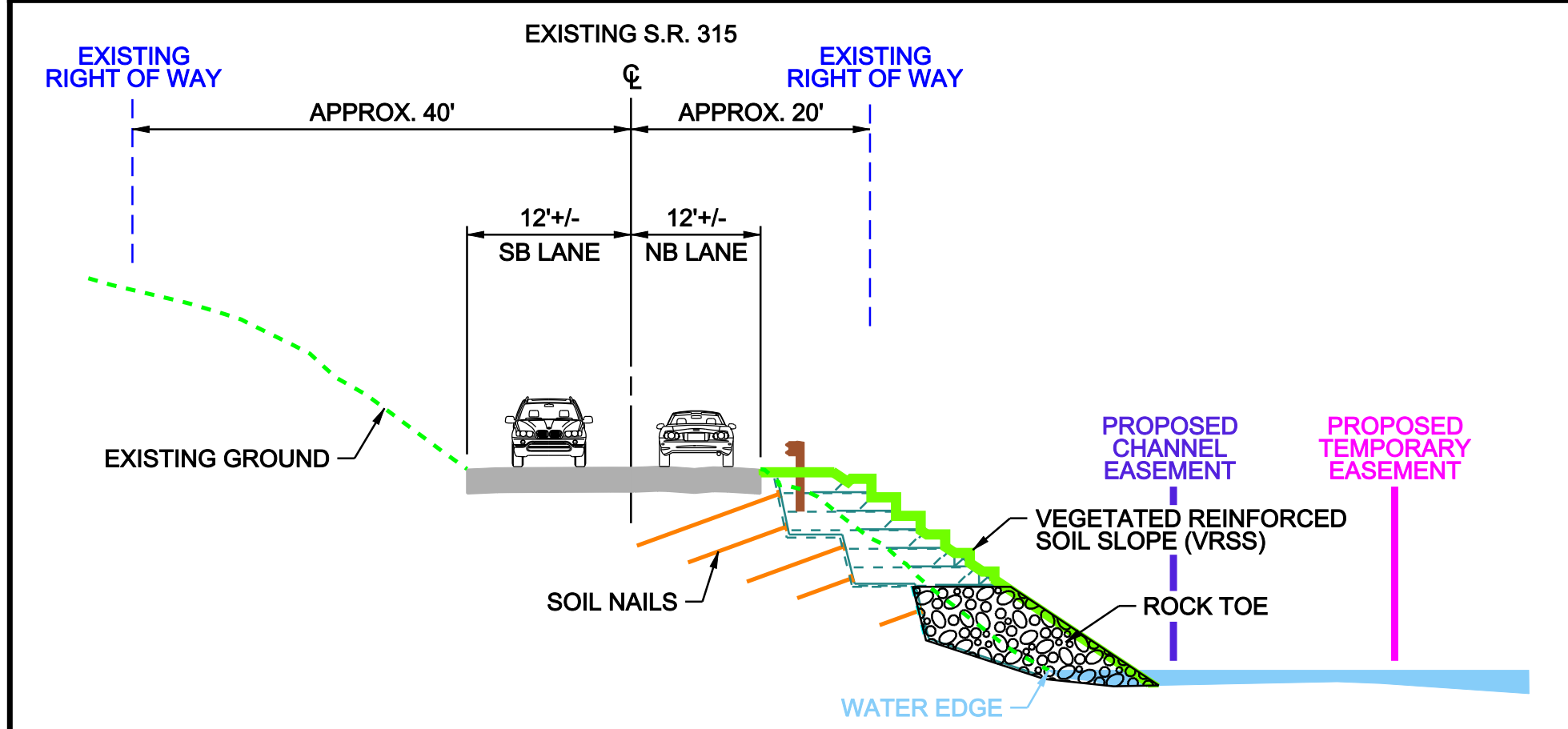
KEY MAP



LEGEND	
Pavement	Curb and Gutter
Graded Area	Bio-Engineering Stabilization
Property Line	Proposed Right-of-Way
Existing Right-of-Way	Channel Easement
Edge of River	Temporary Easement



SECTION A-A



Powell Road 750
Highbanks
Metro Park